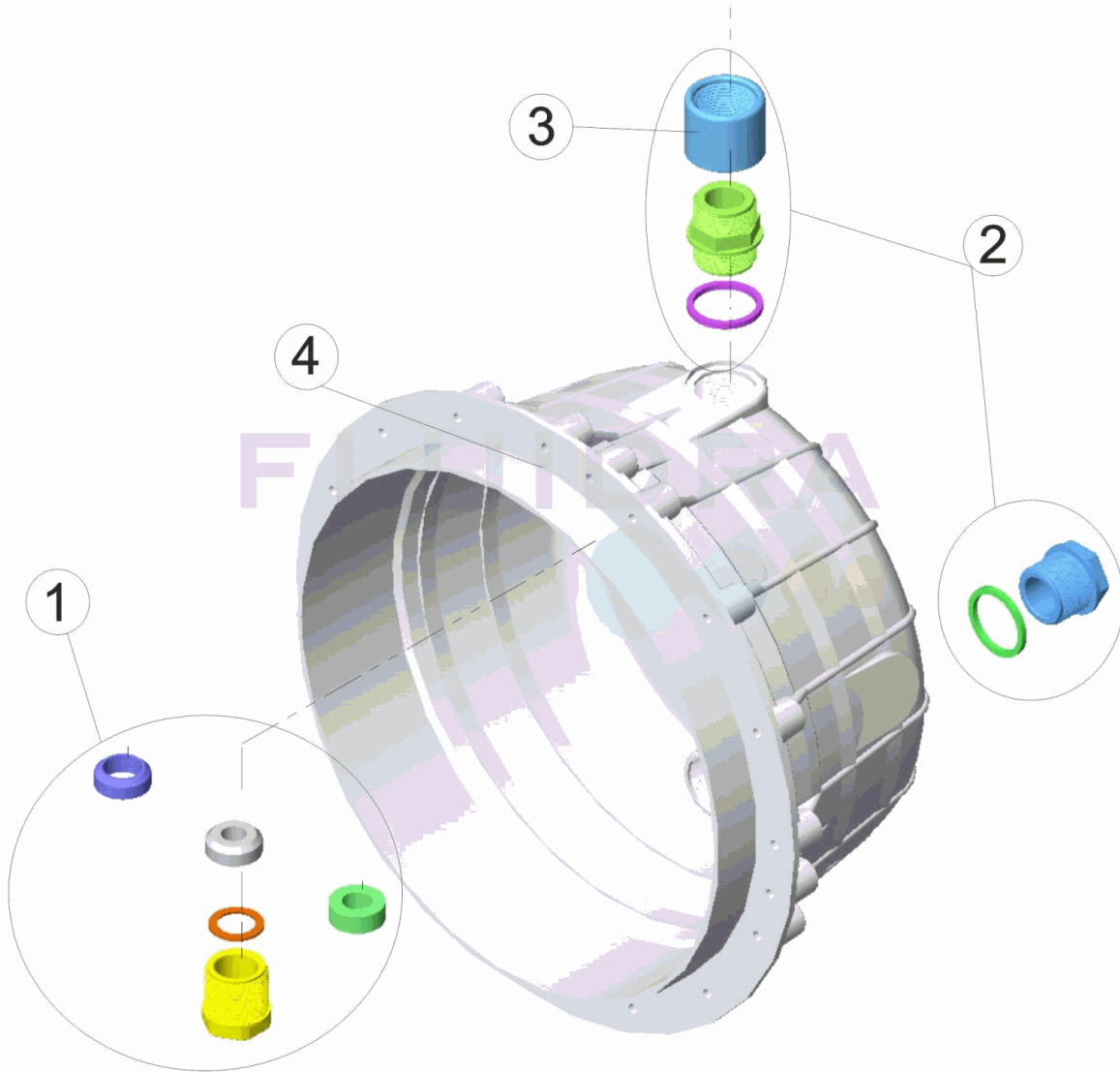


CODIGO **00349, 37175**

DESCRIPCION: **NICHO PROYECTOR PISCINA HORMIGON STANDARD Y NF**



ESPAÑOL

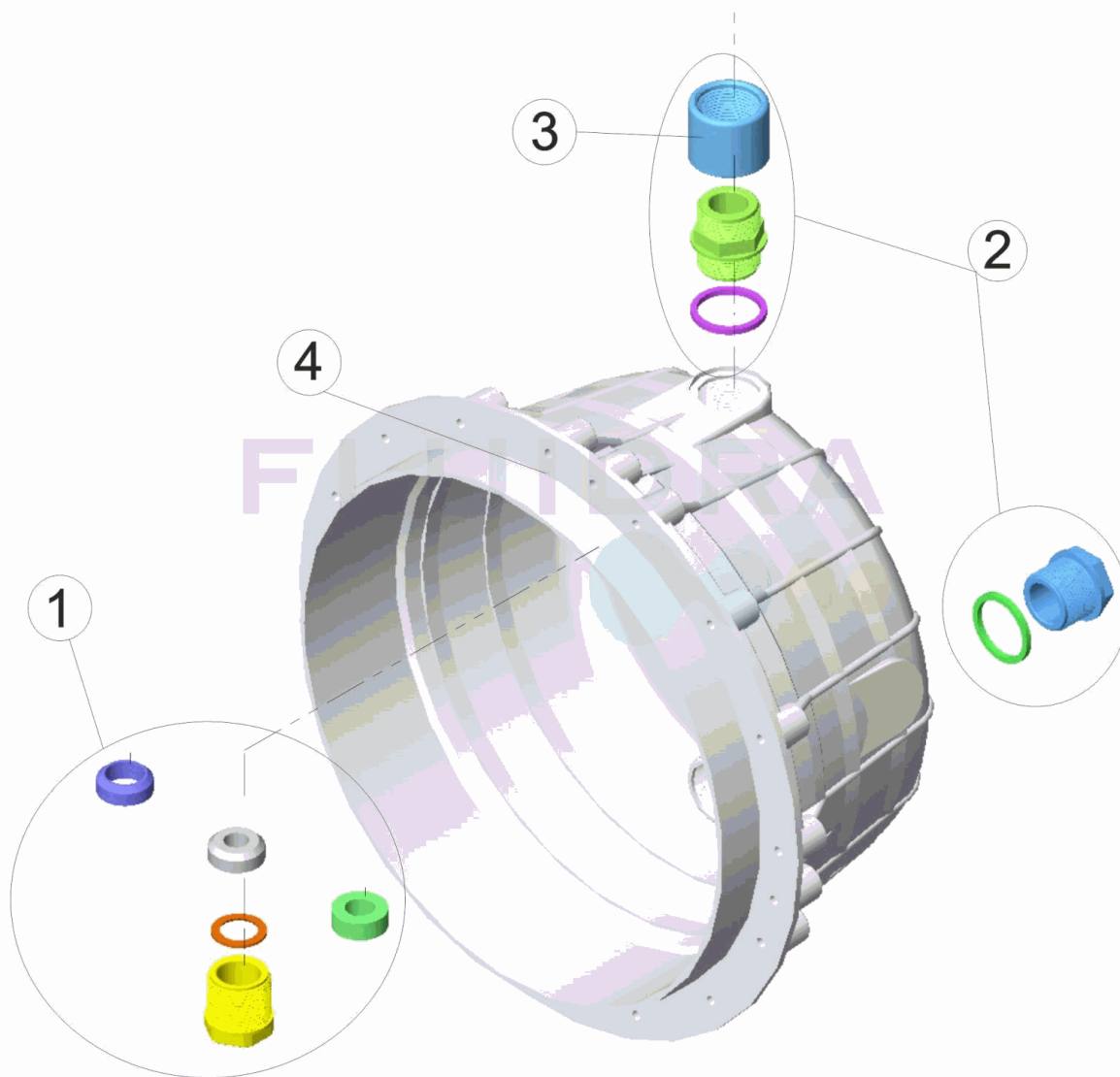
POS	CODIGO	DESCRIPCION	POS	CODIGO	DESCRIPCION
1	4403010801	CJTO. PRENSAESTOPAS	4	* 07838R0006	NICHO PROYECTOR
2	4403010313	PRENSAESTOPAS CUERPO PROYECTOR M-25	4	* 33975R0001	NICHO PROYECTOR NF. P. HORMIG
3	4403010802	MANGUITO M-25			

CODIGO **00349, 37175**DESCRIPCION: **NICHO PROYECTOR PISCINA HORMIGON STANDARD Y NF****OBSERVACIONES**

POS	CODIGO	OBSERVACIONES
4	07838R0006	PARA: 00349
4	33975R0001	PARA: 37175

CODE **00349, 37175**

DESCRIPTION: **NICHE PROJECTEUR PISCINE BÉTON STANDARD ET NF**



FRANCAIS

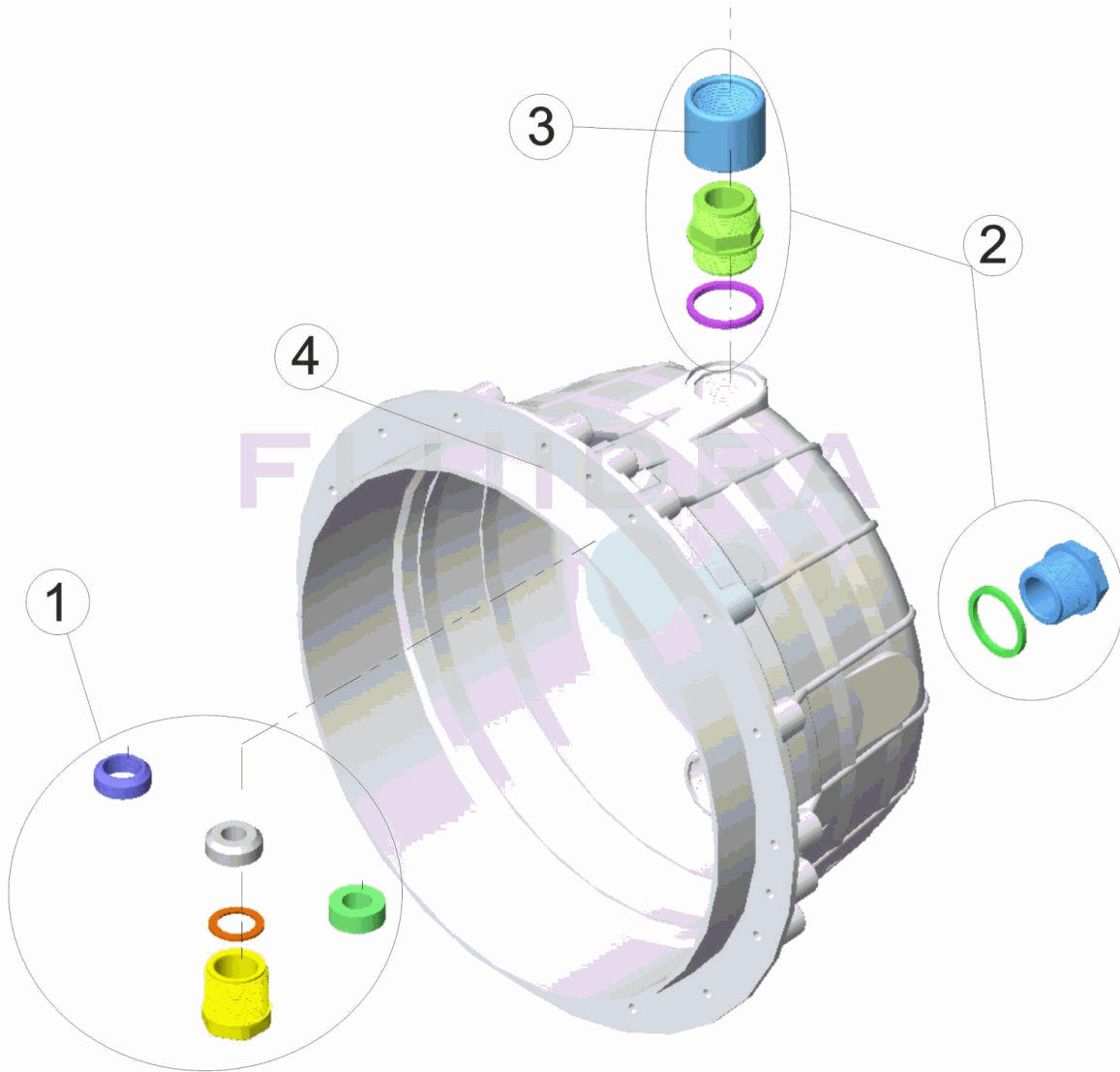
POS	CODE	DESCRIPTION	POS	CODE	DESCRIPTION
1	4403010801	ENS. PRESSE ETOUPE	4	* 07838R0006	NICHE PROJECTEUR
2	4403010313	CORPS PRESSE ETOUPE M-25	4	* 33975R0001	NICHE PROJECTEUR NF
3	4403010802	MANCHON M-25			

CODE **00349, 37175**DESCRIPTION: **NICHE PROJECTEUR PISCINE BÉTON STANDARD ET NF****OBSERVATIONS**

POS	CODE	OBSERVATIONS
4	07838R0006	POUR: 00349
4	33975R0001	POUR: 37175

CODE **00349, 37175**

DESCRIPTION: **LIGHT NICHE CONCRETE POOL STANDARD AND NF**



ENGLISH

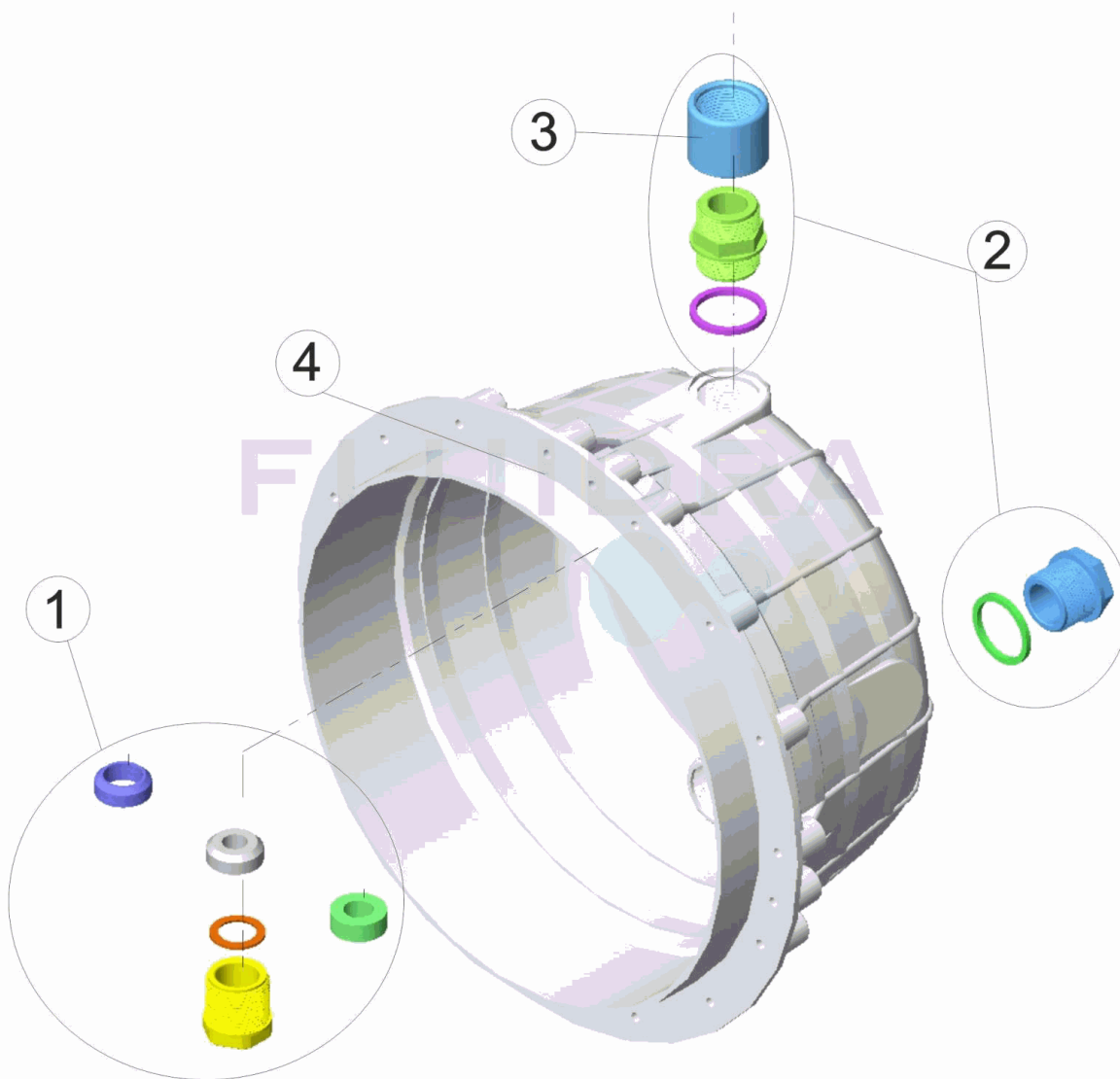
POS	CODE	DESCRIPTION	POS	CODE	DESCRIPTION
1	4403010801	GLAND SEAL ASSY.	4	* 07838R0006	FLOODLAMP HOUSING
2	4403010313	BODY PACKING GLAND M-25	4	* 33975R0001	FLOODLAMP HOUSING
3	4403010802	MUFF M-25			

CODE **00349, 37175**DESCRIPTION: **LIGHT NICHE CONCRETE POOL STANDARD AND NF****OBSERVATIONS**

POS	CODE	OBSERVATIONS
4	07838R0006	FOR: 00349
4	33975R0001	FOR: 37175

CODICE **00349, 37175**

DESCRIZIONE: **NICCHIA PROIETTORE PISCINA CEMENTO STANDARD E NF**



ITALIANO

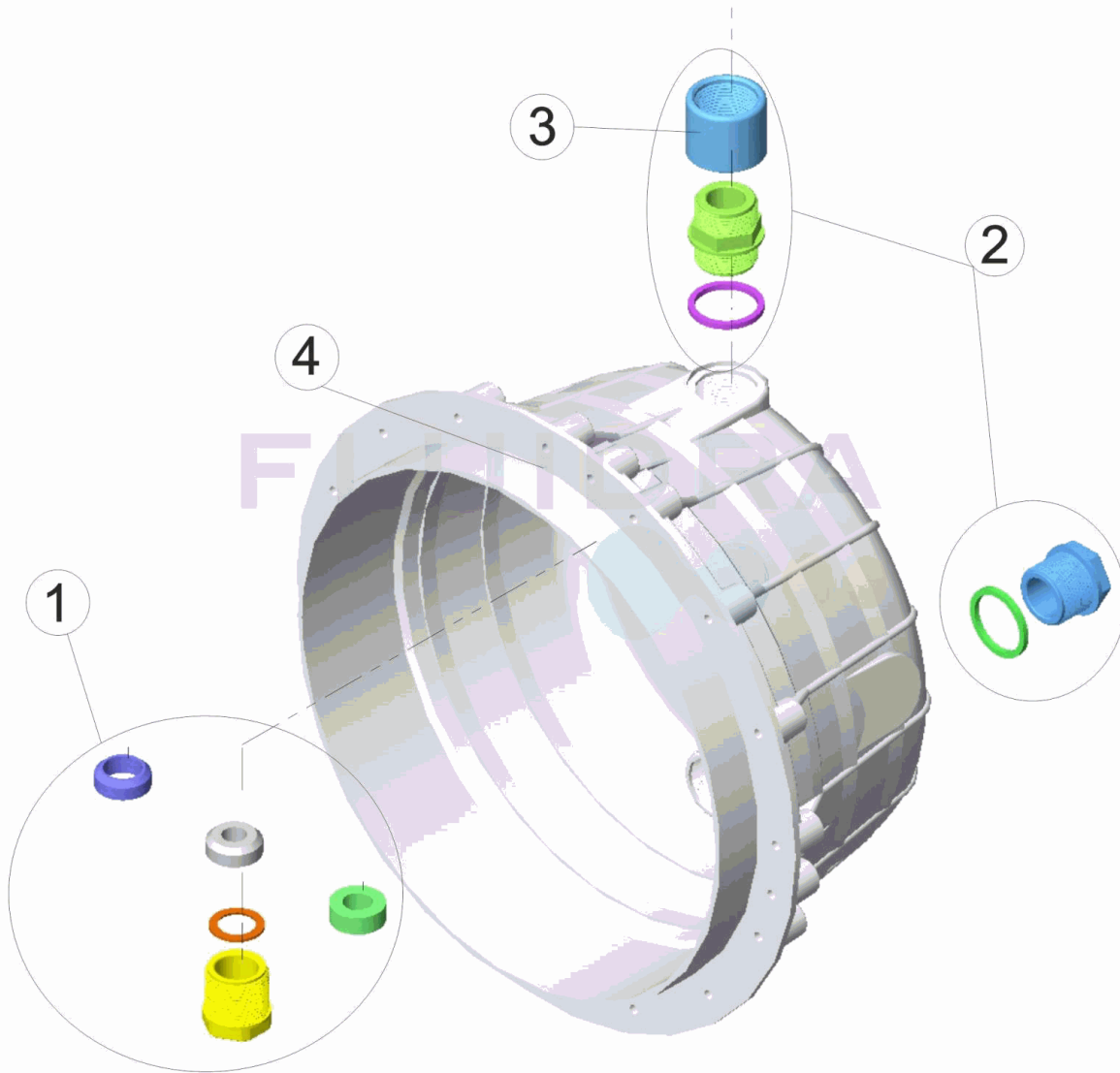
POS	CODICE	DESCRIZIONE	POS	CODICE	DESCRIZIONE
1	4403010801	KIT PRESSACAVI	4	* 07838R0006	NICCHIA PROIETTORE
2	4403010313	PRESSACAVI CORPO M-25	4	* 33975R0001	NICCHIA PROIETTORE
3	4403010802	MANICOTTO M-25			

CODICE **00349, 37175**DESCRIZIONE: **NICCHIA PROIETTORE PISCINA CEMENTO STANDARD E NF****OSSERVAZIONI**

POS	CODICE	OSSERVAZIONI
4	07838R0006	PER: 00349
4	33975R0001	PER: 37175

CODE **00349, 37175**

BESCHREIBUNG: **EINBAUTOPF UWS BETONBECKEN STANDARD UND NF**



DEUTSCH

POS	CODE	BESCHREIBUNG	POS	CODE	BESCHREIBUNG
1	4403010801	SET QUETSCHVERSCHAUBUNG	4	* 07838R0006	EINBAUTOPF
2	4403010313	WANDDURCHFÜHRUNG UWS M-25	4	* 33975R0001	EINBAUTOPF
3	4403010802	MUFFE M-25			

CODE **00349, 37175**

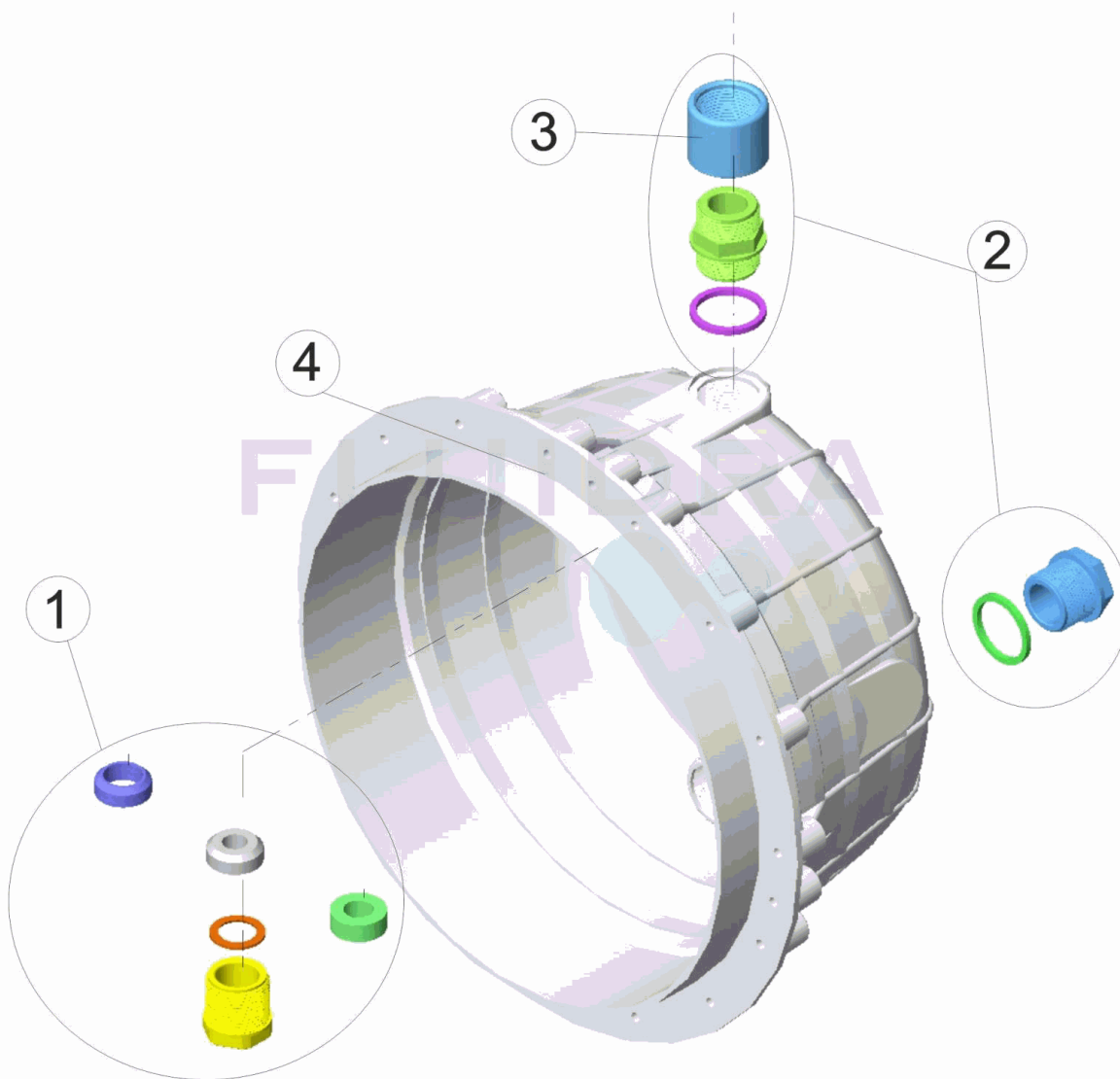
BESCHREIBUNG: **EINBAUTOPF UWS BETONBECKEN STANDARD UND NF**

HINWEISE

POS	CODE	HINWEISE
4	07838R0006	FÜR: 00349
4	33975R0001	FÜR: 37175

CODIGO **00349, 37175**

DESCRIÇÃO: **NICHO PROJECTOR PISCINA BETÃO STANDARD E NF**



PORTUGUES

POS	CODIGO	DESCRIÇÃO	POS	CODIGO	DESCRIÇÃO
1	4403010801	CONJ.CAIXA DE VEDAÇÃO	4	* 07838R0006	NICHO PROJECTOR
2	4403010313	BUCIN CORPO M-25	4	* 33975R0001	NICHO PROJECTOR
3	4403010802	MANGUITO M-25			

CODIGO **00349, 37175**DESCRIÇÃO: **NICHO PROJECTOR PISCINA BETÃO STANDARD E NF****OBSERVAÇÕES**

POS	CODIGO	OBSERVAÇÕES
4	07838R0006	PARA: 00349
4	33975R0001	PARA: 37175