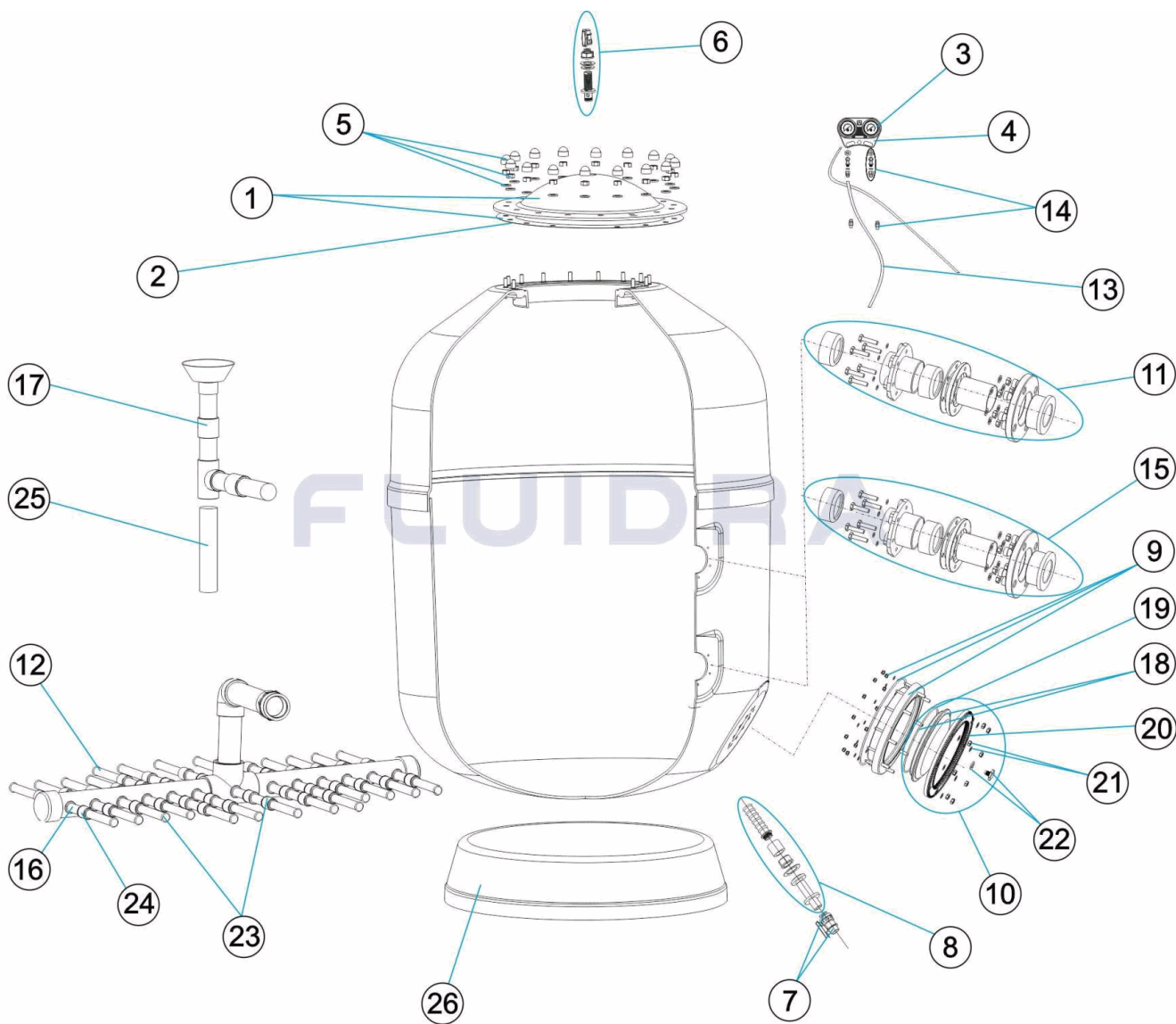


CODIGO 20068 1", 20069 1", 20070 1", 20071 1", 20072 1", 21497 1", 21498 1", 21499 1", 21500 1", 21501 1", 21502 1", 21503 1", 21504 1", 21505 1", 21506 1", 21507 1", 21508 1", 21509 1", 21510 1"

DESCRIPCION: FILTRO EUROPA (MODELO ANTIGUO - BRAZOS 1") 1M. 2,5 KG. D.1050-1200-140


ESPAÑOL

POS	CODIGO	DESCRIPCION	POS	CODIGO	DESCRIPCION
1	4404160102	TAPA FILTRO + JUNTA	11	* 4404160813	CJTO. ENTRADA EUROPE D.90 PARA 1050
2	4404160101	JUNTA TORICA TAPA	11	* 4404160830	CJTO. ENTRADA EUROPE D. 75 PARA 1200 - 1400
3	4404170102	MANOMETRO 3 ATM.	11	* 4404160831	CJTO. ENTRADA EUROPE D.90 PARA 1200 - 1400 -
4	4404170105	CUERPO PANEL MANOMETROS	11	* 4404160814	CJTO. ENTRADA EUROPE D.110 PARA 1400 - 1600
5	4404260211	TORNILLERIA TAPA FILTRO	11	* 4404160815	CJTO. ENTRADA EUROPE D.125 PARA 1600
6	4404260210	FIJACION MANOMETRO	11	* 4404160832	CJTO. ENTRADA EUROPE D.90 PARA 1800
6	4404160806	PURGA AIRE 3/4"	11	* 4404160833	CJTO. ENTRADA EUROPE D.110 PARA 1800 - 2000
7	4404160807	VALVULA BOLA 3/4"	11	* 4404160834	CJTO. ENTRADA EUROPE D.125 PARA 1800 - 2000
8	4404160808	PURGA AGUA 3/4"	11	* 4404160816	CJTO. ENTRADA EUROPE D.140 PARA 1800 - 2000
9	4404160809	ARO CUELLO 20 TORNILLOS	11	* 4404160817	CJTO. ENTRADA EUROPE D.160 PARA 2000
10	4404160810	TAPA VACIADO ARENA	12	* 4404300916	BRAZO COLECTOR 1" 225 M "

CODIGO **20068 1", 20069 1", 20070 1", 20071 1", 20072 1", 21497 1", 21498 1", 21499 1", 21500 1", 21501 1", 21502 1", 21503 1", 21504 1", 21505 1", 21506 1", 21507 1", 21508 1", 21509 1", 21510 1"**

DESCRIPCION: FILTRO EUROPA (MODELO ANTIGUO - BRAZOS 1") 1M. 2,5 KG. D.1050-1200-140

11	* 4404160811	CJTO. ENTRADA EUROPE D.63 PARA 1050	12	* 4404300915	BRAZO COLECTOR 1" 175 M "
11	* 4404160812	CJTO. ENTRADA EUROPE D.75 PARA 1050	12	* 4404300917	BRAZO COLECTOR 1" 110 M "
13	4404170104	RACORD PANEL + TUBO	17	* 4404160059	CJTO. DIFUSOR D. 160 - 2000
14	4404170103	PURGA PANEL MANOMETROS	18	4404160847	TAPA FILTRO D. 220 NEGRA
15	* 4404160835	CJTO. SALIDA EUROPE D.63 PARA 1050	19	4404260106	JUNTA ARO FIJACION VALVULA
15	* 4404160836	CJTO. SALIDA EUROPE D.75 PARA 1050	20	4404160849	ARO FIJACION TAPA
15	* 4404160837	CJTO. SALIDA EUROPE D.90 PARA 1050	21	4404160850	TORNILLERIA FIJACION TAPA M8
15	* 4404160838	CJTO. SALIDA EUROPE D.75 PARA 1200 - 1400	22	4404040113	TAPON PURGA Y JUNTA
15	* 4404160839	CJTO. SALIDA EUROPE D.90 PARA 1200 - 1400 - 160	23	* 4404301303	CJTO. BRAZOS COLECTOR 1" D. 1050 EUROP "
15	* 4404160840	CJTO. SALIDA EUROPE D.110 PARA 1400 - 1600	23	* 4404200102	CJTO. BRAZOS COLECTOR 1" D. 1200 EUROP "
15	* 4404160841	CJTO. SALIDA EUROPE D.125 PARA 1600	23	* 4404200103	CJTO. BRAZOS COLECTOR 1" D. 1400 EUROP "
15	* 4404160842	CJTO. SALIDA EUROPE D.90 PARA 1800	23	* 4404210308	CJTO. BRAZOS COLECTOR 1" D. 1600 EUROP "
15	* 4404160843	CJTO. SALIDA EUROPE D.110 PARA 1800 - 2000	23	* 4404230106	CJTO. BRAZOS COLECTOR 1" D. 1800 EUROP "
15	* 4404160844	CJTO. SALIDA EUROPE D.125 PARA 1800 - 2000	23	* 4404230108	CJTO. BRAZOS COLECTOR 1" D. 2000 EUROP "
15	* 4404160845	CJTO. SALIDA EUROPE D.140 PARA 1800 - 2000	24	* 4404260418	MANGUITO ENLACE UNION 1"
15	* 4404160846	CJTO. SALIDA EUROPE D.160 PARA 2000	25	* 21512R0423	SOPORTE DIFUSOR D.90 PARA 1400
16	* 4404260419	BRAZO COLECTOR 1" 100 M "	25	* 21513R0423	SOPORTE DIFUSOR D.110 PARA 1400
17	* 4404160041	CJTO. DIFUSOR D. 63 - 1050	25	* 21500R0423	SOPORTE DIFUSOR D.90 PARA 1600
17	* 4404160042	CJTO. DIFUSOR D. 75 - 1050	25	* 21515R0423	CJTO. SOPORTE DIFUSOR D.1600-110
17	* 4404160043	CJTO. DIFUSOR D. 90 - 1050	25	* 21502R0423	SOPORTE DIFUSOR D.125 PARA 1600
17	* 4404160044	CJTO. DIFUSOR D. 75 - 1200	25	* 21503R0423	SOPORTE DIFUSOR D.90 PARA 1800
17	* 4404160045	CJTO. DIFUSOR D. 90 - 1200	25	* 21504R0423	SOPORTE DIFUSOR D.110 PARA 1800
17	* 4404160046	CJTO. DIFUSOR D. 75 - 1400	25	* 21519R0423	SOPORTE DIFUSOR D.125 PARA 1800
17	* 4404160047	CJTO. DIFUSOR D. 90 - 1400	25	* 21506R0423	SOPORTE DIFUSOR D.140 PARA 1800
17	* 4404160048	CJTO. DIFUSOR D. 110 - 1400	25	* 21507R0423	SOPORTE DIFUSOR D.110 PARA 2000
17	* 4404160049	CJTO. DIFUSOR D. 90 - 1600	25	* 21508R0423	SOPORTE DIFUSOR D.125 PARA 2000
17	* 4404160050	CJTO. DIFUSOR D. 110 - 1600	25	* 21523R0423	SOPORTE DIFUSOR D.140 PARA 2000
17	* 4404160051	CJTO. DIFUSOR D. 125 - 1600	25	* 21510R0423	SOPORTE DIFUSOR D.160 PARA 2000
17	* 4404160052	CJTO. DIFUSOR D. 90 - 1800	26	* 20070R0150	PIE FILTRO 1050 EUROPE
17	* 4404160053	CJTO. DIFUSOR D. 110 - 1800	26	* 20068R0150	PIE FILTRO 1200 EUROPE
17	* 4404160054	CJTO. DIFUSOR D. 125 - 1800	26	* 21511R0150	PIE D. 1400
17	* 4404160055	CJTO. DIFUSOR D. 140 - 1800	26	* 21514R0150	PIE FILTRO 1600 EUROPE
17	* 4404160056	CJTO. DIFUSOR D. 110 - 2000	26	* 21517R0150	PIE FILTRO 1800 EUROPE
17	* 4404160057	CJTO. DIFUSOR D. 125 - 2000	26	* 21521R0150	PIE FILTRO 2000 EUROPE
17	* 4404160058	CJTO. DIFUSOR D. 140 - 2000			

CODIGO **20068 1", 20069 1", 20070 1", 20071 1", 20072 1", 21497 1", 21498 1", 21499 1", 21500 1", 21501 1", 21502 1", 21503 1", 21504 1", 21505 1", 21506 1", 21507 1", 21508 1", 21509 1", 21510 1"**

DESCRIPCION: FILTRO EUROPA (MODELO ANTIGUO - BRAZOS 1") 1M. 2,5 KG. D.1050-1200-140

OBSERVACIONES

POS	CODIGO	OBSERVACIONES
11	4404160811	PARA: 20070 1"
11	4404160812	PARA: 20071 1"
11	4404160813	PARA: 20072 1"
11	4404160830	PARA: 20068 1", 21497 1"
11	4404160831	PARA: 20069 1", 21498 1", 21500 1"
11	4404160814	PARA: 21499 1", 21500 1"
11	4404160815	PARA: 21502 1"
11	4404160832	PARA: 21503 1"
11	4404160833	PARA: 21504 1", 21507 1"
11	4404160834	PARA: 21505 1", 21508 1"
11	4404160816	PARA: 21506 1", 21509 1"
11	4404160817	PARA: 21510 1"
12	4404300916	PARA: 20068 1" [7UT], 20069 1" [7UT], 20070 1" [2UT], 20071 1" [2UT], 20072 1" [2UT], 21497 1" [7UT], 21498 1" [7UT], 21499 1" [7UT], 21500 1" [4UT], 21501 1" [4UT], 21502 1" [4UT], 21503 1" [23UT], 21504 1" [23UT], 21505 1" [23UT], 21506 1" [23UT], 21507 1" [18UT], 21508 1" [18UT], 21509 1" [18UT], 21510 1" [18UT]
12	4404300915	PARA: 20068 1" [8UT], 20069 1" [8UT], 20070 1" [13UT], 20071 1" [13UT], 20072 1" [13UT], 21497 1" [18UT], 21498 1" [18UT], 21499 1" [18UT], 21500 1" [25UT], 21501 1" [25UT], 21502 1" [25UT], 21503 1" [10UT], 21504 1" [10UT], 21505 1" [10UT], 21506 1" [10UT], 21507 1" [15UT], 21508 1" [15UT], 21509 1" [15UT], 21510 1" [15UT]
12	4404300917	PARA: 21497 1" [2UT], 21498 1" [2UT], 21499 1" [2UT], 21500 1" [2UT], 21501 1" [2UT], 21502 1" [2UT], 21503 1" [2UT], 21504 1" [2UT], 21505 1" [2UT], 21506 1" [2UT], 21507 1" [2UT], 21508 1" [2UT], 21509 1" [2UT], 21510 1" [2UT]
15	4404160835	PARA: 20070 1"
15	4404160836	PARA: 20071 1"
15	4404160837	PARA: 20072 1"
15	4404160838	PARA: 20068 1", 21497 1"
15	4404160839	PARA: 20069 1", 21498 1", 21500 1"
15	4404160840	PARA: 21499 1", 21500 1"
15	4404160841	PARA: 21502 1"
15	4404160842	PARA: 21503 1"
15	4404160843	PARA: 21504 1", 21507 1"
15	4404160844	PARA: 21505 1", 21508 1"
15	4404160845	PARA: 21506 1", 21509 1"
15	4404160846	PARA: 21510 1"
16	4404260419	PARA: 20068 1" [6UT], 20069 1" [6UT], 20070 1" [5UT], 20071 1" [5UT], 20072 1" [5UT], 21497 1" [4UT], 21498 1" [4UT], 21499 1" [4UT], 21500 1" [7UT], 21501 1" [7UT], 21502 1" [7UT], 21503 1" [9UT], 21504 1" [9UT], 21505 1" [9UT], 21506 1" [9UT], 21507 1" [16UT], 21508 1" [16UT], 21509 1" [16UT], 21510 1" [16UT]
17	4404160041	PARA: 20070 1"
17	4404160042	PARA: 20071 1"
17	4404160043	PARA: 20072 1"
17	4404160044	PARA: 20068 1"
17	4404160045	PARA: 20069 1"
17	4404160046	PARA: 21497 1"
17	4404160047	PARA: 21498 1"
17	4404160048	PARA: 21499 1"
17	4404160049	PARA: 21500 1"

CODIGO **20068 1", 20069 1", 20070 1", 20071 1", 20072 1", 21497 1", 21498 1", 21499 1", 21500 1", 21501 1", 21502 1", 21503 1", 21504 1", 21505 1", 21506 1", 21507 1", 21508 1", 21509 1", 21510 1"**

DESCRIPCION: FILTRO EUROPA (MODELO ANTIGUO - BRAZOS 1") 1M. 2,5 KG. D.1050-1200-140

17	4404160050	PARA: 21501 1"
17	4404160051	PARA: 21502 1"
17	4404160052	PARA: 21503 1"
17	4404160053	PARA: 21504 1"
17	4404160054	PARA: 21505 1"
17	4404160055	PARA: 21506 1"
17	4404160056	PARA: 21507 1"
17	4404160057	PARA: 21508 1"
17	4404160058	PARA: 21509 1"
17	4404160059	PARA: 21510 1"
23	4404301303	PARA: 20070 1", 20071 1", 20072 1"
23	4404200102	PARA: 20068 1", 20069 1"
23	4404200103	PARA: 21497 1", 21498 1", 21499 1"
23	4404210308	PARA: 21500 1", 21501 1", 21502 1"
23	4404230106	PARA: 21503 1", 21504 1", 21505 1", 21506 1"
23	4404230108	PARA: 21507 1", 21508 1", 21509 1", 21510 1"
24	4404260418	PARA: 20068 1" [6UT], 20069 1" [6UT], 20070 1" [5UT], 20071 1" [5UT], 20072 1" [5UT], 21497 1" [4UT], 21498 1" [4UT], 21499 1" [4UT], 21500 1" [7UT], 21501 1" [7UT], 21502 1" [7UT], 21503 1" [9UT], 21504 1" [9UT], 21505 1" [9UT], 21506 1" [9UT], 21507 1" [16UT], 21508 1" [16UT], 21509 1" [16UT], 21510 1" [16UT]
25	21512R0423	PARA: 21498 1"
25	21513R0423	PARA: 21499 1"
25	21500R0423	PARA: 21500 1"
25	21515R0423	PARA: 21501 1"
25	21502R0423	PARA: 21502 1"
25	21503R0423	PARA: 21503 1"
25	21504R0423	PARA: 21504 1"
25	21519R0423	PARA: 21505 1"
25	21506R0423	PARA: 21506 1"
25	21507R0423	PARA: 21507 1"
25	21508R0423	PARA: 21508 1"
25	21523R0423	PARA: 21509 1"
25	21510R0423	PARA: 21510 1"
26	20070R0150	PARA: 20070 1", 20071 1", 20072 1"
26	20068R0150	PARA: 20068 1", 20069 1"
26	21511R0150	PARA: 21497 1", 21498 1", 21499 1"
26	21514R0150	PARA: 21500 1", 21501 1", 21502 1"
26	21517R0150	PARA: 21503 1", 21504 1", 21505 1", 21506 1"
26	21521R0150	PARA: 21508 1", 21509 1"

*** -> VOIR FICHE D'OBSERVATIONS**

CODE **20068 1", 20069 1", 20070 1", 20071 1", 20072 1", 21497 1", 21498 1", 21499 1", 21500 1", 21501 1", 21502 1", 21503 1", 21504 1", 21505 1", 21506 1", 21507 1", 21508 1", 21509 1", 21510 1"**

DESCRIPTION: **FILTRE EUROPA (ANCIEN MODÈLE - BRAS DE RÉPARTITEUR 1") 1M. 2,5 KG. D.**

11	* 4404160811	ENSEMBLE ENTREE 63 1050	12	* 4404300915	BRAS DE REPARTITEUR 1" 175 M "
11	* 4404160812	ENSEMBLE ENTREE 75 1050	12	* 4404300917	BRAS DE REPARTITEUR 1" 110 M "
13	4404170104	RACCORD FACADE + TUBE	17	* 4404160059	ENSEMBLE DIFFUSEUR D. 160 - 2000
14	4404170103	PURGE D'AIR	18	4404160847	COUVERCLE FILTRE D. 220 NOIR
15	* 4404160835	ENSEMBLE SORTIE EUROPE D.63 POUR 1050	19	4404260106	JOINT BRIDE FIXATION VANNE TOP
15	* 4404160836	ENSEMBLE SORTIE EUROPE D.75 POUR 1050	20	4404160849	BRIDE DE FIXATION COUVERCLE
15	* 4404160837	ENSEMBLE SORTIE EUROPE D.90 POUR 1050	21	4404160850	VISSERIE FIXATION COUVERCLE M8
15	* 4404160838	ENSEMBLE SORTIE EUROPE D.75 POUR 1200-1400	22	4404040113	BOUCHON PURGE ET JOINT
15	* 4404160839	ENSEMBLE SORTIE EUROPE D.90 POUR 1200-1400	23	* 4404301303	ENSEMBLE BRAS DE REPARTITEUR 1" D. 1050 EU
15	* 4404160840	ENSEMBLE SORTIE EUROPE D.110 PARA 1400-1600	23	* 4404200102	ENSEMBLE BRAS DE REPARTITEUR 1" D. 1200 EU
15	* 4404160841	ENSEMBLE SORTIE EUROPE D.125 POUR 1600	23	* 4404200103	ENSEMBLE BRAS DE REPARTITEUR 1" D. 1400 EU
15	* 4404160842	ENSEMBLE SORTIE EUROPE D.90 POUR 1800	23	* 4404210308	ENSEMBLE BRAS DE REPARTITEUR 1" D. 1600 EU
15	* 4404160843	ENSEMBLE SORTIE EUROPE D.110 POUR 1800-2000	23	* 4404230106	ENSEMBLE BRAS DE REPARTITEUR 1" D. 1800 EU
15	* 4404160844	ENSEMBLE SORTIE EUROPE D.125 POUR 1800-2000	23	* 4404230108	ENSEMBLE BRAS DE REPARTITEUR 1" D. 2000 EU
15	* 4404160845	ENSEMBLE SORTIE EUROPE D.140 POUR 1800-2000	24	* 4404260418	MANCHON UNION 1"
15	* 4404160846	ENSEMBLE SORTIE EUROPE D.160 POUR 2000	25	* 21512R0423	TUBE SUPPORT DIFFUSEUR D.90 POUR 1400
16	* 4404260419	BRAS DE REPARTITEUR 1" 100M "	25	* 21513R0423	TUBE SUPPORT DIFFUSEUR D.110 POUR 1400
17	* 4404160041	ENSEMBLE DIFFUSEUR D. 63 - 1050	25	* 21500R0423	TUBE SUPPORT DIFFUSEUR D.90 POUR 1600
17	* 4404160042	ENSEMBLE DIFFUSEUR D. 75 - 1050	25	* 21515R0423	TUBE SUPPORT DIFFUSEUR D.110 POUR 1600
17	* 4404160043	ENSEMBLE DIFFUSEUR D. 90 - 1050	25	* 21502R0423	TUBE SUPPORT DIFFUSEUR D.125 POUR 1600
17	* 4404160044	ENSEMBLE DIFFUSEUR D. 75 - 1200	25	* 21503R0423	TUBE SUPPORT DIFFUSEUR D.90 POUR 1800
17	* 4404160045	ENSEMBLE DIFFUSEUR D. 90 - 1200	25	* 21504R0423	TUBE SUPPORT DIFFUSEUR D.110 POUR 1800
17	* 4404160046	ENSEMBLE DIFFUSEUR D. 75 - 1400	25	* 21519R0423	TUBE SUPPORT DIFFUSEUR D.125 POUR 1800
17	* 4404160047	ENSEMBLE DIFFUSEUR D. 90 - 1400	25	* 21506R0423	TUBE SUPPORT DIFFUSEUR D.140 POUR 1800
17	* 4404160048	ENSEMBLE DIFFUSEUR D. 110 - 1400	25	* 21507R0423	TUBE SUPPORT DIFFUSEUR D.110 POUR 2000
17	* 4404160049	ENSEMBLE DIFFUSEUR D. 90 - 1600	25	* 21508R0423	TUBE SUPPORT DIFFUSEUR D.125 POUR 2000
17	* 4404160050	ENSEMBLE DIFFUSEUR D. 110 - 1600	25	* 21523R0423	TUBE SUPPORT DIFFUSEUR D.140 POUR 2000
17	* 4404160051	ENSEMBLE DIFFUSEUR D. 125 - 1600	25	* 21510R0423	TUBE SUPPORT DIFFUSEUR D.160 POUR 2000
17	* 4404160052	ENSEMBLE DIFFUSEUR D. 90 - 1800	26	* 20070R0150	SOCLE FILTRE 1050 EUROPE
17	* 4404160053	ENSEMBLE DIFFUSEUR D. 110 - 1800	26	* 20068R0150	SOCLE FILTRE 1200 EUROPE
17	* 4404160054	ENSEMBLE DIFFUSEUR D. 125 - 1800	26	* 21511R0150	SOCLE FILTRE 1400 EUROPE
17	* 4404160055	ENSEMBLE DIFFUSEUR D. 140 - 1800	26	* 21514R0150	SOCLE FILTRE 1600 EUROPE
17	* 4404160056	ENSEMBLE DIFFUSEUR D. 110 - 2000	26	* 21517R0150	SOCLE FILTRE 1800 EUROPE
17	* 4404160057	ENSEMBLE DIFFUSEUR D. 125 - 2000	26	* 21521R0150	SOCLE FILTRE 2000 EUROPE
17	* 4404160058	ENSEMBLE DIFFUSEUR D. 140 - 2000			

CODE **20068 1", 20069 1", 20070 1", 20071 1", 20072 1", 21497 1", 21498 1", 21499 1", 21500 1", 21501 1", 21502 1", 21503 1", 21504 1", 21505 1", 21506 1", 21507 1", 21508 1", 21509 1", 21510 1"**

DESCRIPTION: **FILTRE EUROPA (ANCIEN MODÈLE - BRAS DE RÉPARTITEUR 1") 1M. 2,5 KG. D.**

OBSERVATIONS

POS	CODE	OBSERVATIONS
11	4404160811	POUR: 20070 1"
11	4404160812	POUR: 20071 1"
11	4404160813	POUR: 20072 1"
11	4404160830	POUR: 20068 1", 21497 1"
11	4404160831	POUR: 20069 1", 21498 1", 21500 1"
11	4404160814	POUR: 21499 1", 21500 1"
11	4404160815	POUR: 21502 1"
11	4404160832	POUR: 21503 1"
11	4404160833	POUR: 21504 1", 21507 1"
11	4404160834	POUR: 21505 1", 21508 1"
11	4404160816	POUR: 21506 1", 21509 1"
11	4404160817	POUR: 21510 1"
12	4404300916	POUR: 20068 1" [7UT], 20069 1" [7UT], 20070 1" [2UT], 20071 1" [2UT], 20072 1" [2UT], 21497 1" [7UT], 21498 1" [7UT], 21499 1" [7UT], 21500 1" [4UT], 21501 1" [4UT], 21502 1" [4UT], 21503 1" [23UT], 21504 1" [23UT], 21505 1" [23UT], 21506 1" [23UT], 21507 1" [18UT], 21508 1" [18UT], 21509 1" [18UT], 21510 1" [18UT]
12	4404300915	POUR: 20068 1" [8UT], 20069 1" [8UT], 20070 1" [13UT], 20071 1" [13UT], 20072 1" [13UT], 21497 1" [18UT], 21498 1" [18UT], 21499 1" [18UT], 21500 1" [25UT], 21501 1" [25UT], 21502 1" [25UT], 21503 1" [10UT], 21504 1" [10UT], 21505 1" [10UT], 21506 1" [10UT], 21507 1" [15UT], 21508 1" [15UT], 21509 1" [15UT], 21510 1" [15UT]
12	4404300917	POUR: 21497 1" [2UT], 21498 1" [2UT], 21499 1" [2UT], 21500 1" [2UT], 21501 1" [2UT], 21502 1" [2UT], 21503 1" [2UT], 21504 1" [2UT], 21505 1" [2UT], 21506 1" [2UT], 21507 1" [2UT], 21508 1" [2UT], 21509 1" [2UT], 21510 1" [2UT]
15	4404160835	POUR: 20070 1"
15	4404160836	POUR: 20071 1"
15	4404160837	POUR: 20072 1"
15	4404160838	POUR: 20068 1", 21497 1"
15	4404160839	POUR: 20069 1", 21498 1", 21500 1"
15	4404160840	POUR: 21499 1", 21500 1"
15	4404160841	POUR: 21502 1"
15	4404160842	POUR: 21503 1"
15	4404160843	POUR: 21504 1", 21507 1"
15	4404160844	POUR: 21505 1", 21508 1"
15	4404160845	POUR: 21506 1", 21509 1"
15	4404160846	POUR: 21510 1"
16	4404260419	POUR: 20068 1" [6UT], 20069 1" [6UT], 20070 1" [5UT], 20071 1" [5UT], 20072 1" [5UT], 21497 1" [4UT], 21498 1" [4UT], 21499 1" [4UT], 21500 1" [7UT], 21501 1" [7UT], 21502 1" [7UT], 21503 1" [9UT], 21504 1" [9UT], 21505 1" [9UT], 21506 1" [9UT], 21507 1" [16UT], 21508 1" [16UT], 21509 1" [16UT], 21510 1" [16UT]
17	4404160041	POUR: 20070 1"
17	4404160042	POUR: 20071 1"
17	4404160043	POUR: 20072 1"
17	4404160044	POUR: 20068 1"
17	4404160045	POUR: 20069 1"
17	4404160046	POUR: 21497 1"
17	4404160047	POUR: 21498 1"
17	4404160048	POUR: 21499 1"
17	4404160049	POUR: 21500 1"

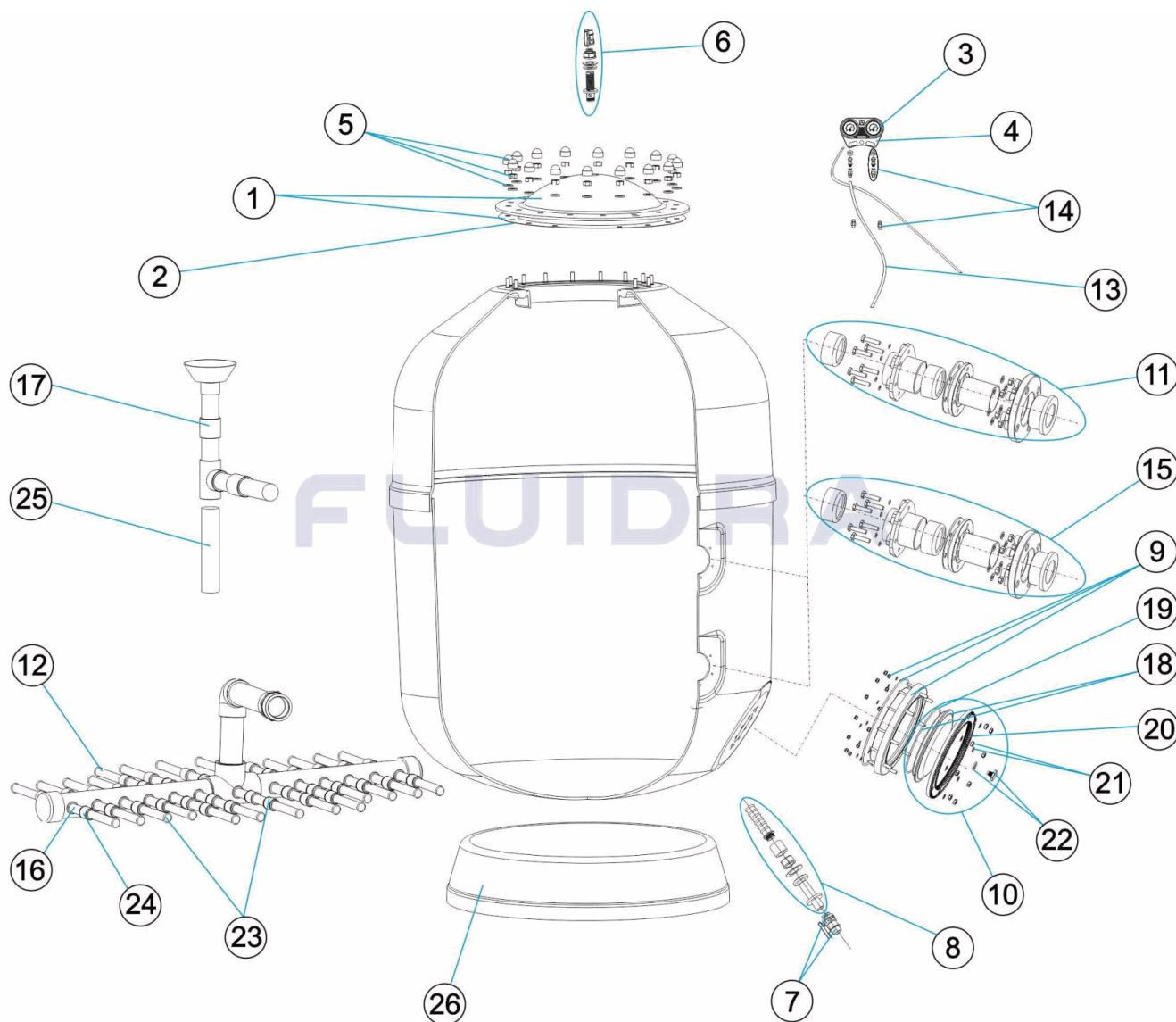
CODE **20068 1", 20069 1", 20070 1", 20071 1", 20072 1", 21497 1", 21498 1", 21499 1", 21500 1", 21501 1", 21502 1", 21503 1", 21504 1", 21505 1", 21506 1", 21507 1", 21508 1", 21509 1", 21510 1"**

DESCRIPTION: **FILTRE EUROPA (ANCIEN MODÈLE - BRAS DE RÉPARTITEUR 1") 1M. 2,5 KG. D.**

17	4404160050	POUR: 21501 1"
17	4404160051	POUR: 21502 1"
17	4404160052	POUR: 21503 1"
17	4404160053	POUR: 21504 1"
17	4404160054	POUR: 21505 1"
17	4404160055	POUR: 21506 1"
17	4404160056	POUR: 21507 1"
17	4404160057	POUR: 21508 1"
17	4404160058	POUR: 21509 1"
17	4404160059	POUR: 21510 1"
23	4404301303	POUR: 20070 1", 20071 1", 20072 1"
23	4404200102	POUR: 20068 1", 20069 1"
23	4404200103	POUR: 21497 1", 21498 1", 21499 1"
23	4404210308	POUR: 21500 1", 21501 1", 21502 1"
23	4404230106	POUR: 21503 1", 21504 1", 21505 1", 21506 1"
23	4404230108	POUR: 21507 1", 21508 1", 21509 1", 21510 1"
24	4404260418	POUR: 20068 1" [6UT], 20069 1" [6UT], 20070 1" [5UT], 20071 1" [5UT], 20072 1" [5UT], 21497 1" [4UT], 21498 1" [4UT], 21499 1" [4UT], 21500 1" [7UT], 21501 1" [7UT], 21502 1" [7UT], 21503 1" [9UT], 21504 1" [9UT], 21505 1" [9UT], 21506 1" [9UT], 21507 1" [16UT], 21508 1" [16UT], 21509 1" [16UT], 21510 1" [16UT]
25	21512R0423	POUR: 21498 1"
25	21513R0423	POUR: 21499 1"
25	21500R0423	POUR: 21500 1"
25	21515R0423	POUR: 21501 1"
25	21502R0423	POUR: 21502 1"
25	21503R0423	POUR: 21503 1"
25	21504R0423	POUR: 21504 1"
25	21519R0423	POUR: 21505 1"
25	21506R0423	POUR: 21506 1"
25	21507R0423	POUR: 21507 1"
25	21508R0423	POUR: 21508 1"
25	21523R0423	POUR: 21509 1"
25	21510R0423	POUR: 21510 1"
26	20070R0150	POUR: 20070 1", 20071 1", 20072 1"
26	20068R0150	POUR: 20068 1", 20069 1"
26	21511R0150	POUR: 21497 1", 21498 1", 21499 1"
26	21514R0150	POUR: 21500 1", 21501 1", 21502 1"
26	21517R0150	POUR: 21503 1", 21504 1", 21505 1", 21506 1"
26	21521R0150	POUR: 21508 1", 21509 1"

CODE 20068 1", 20069 1", 20070 1", 20071 1", 20072 1", 21497 1", 21498 1", 21499 1", 21500 1", 21501 1", 21502 1", 21503 1", 21504 1", 21505 1", 21506 1", 21507 1", 21508 1", 21509 1", 21510 1"

DESCRIPTION: EUROPA FILTER (PREVIOUS MODEL - 1" ARMS) 1M. 2,5 KG. D.1050-1200-1400-1



ENGLISH

POS	CODE	DESCRIPTION	POS	CODE	DESCRIPTION
1	4404160102	FILTER LID + GASKET	11	* 4404160813	INLET ASSEMBLY 90 1050
2	4404160101	LID 'O' RING	11	* 4404160830	INLET ASSEMBLY 75 1200-1400
3	4404170102	PRESSURE GAUGE 3 BAR	11	* 4404160831	INLET ASSEMBLY 90 1200-1400-1600
4	4404170105	PRESSURE GAUGE PANEL BODY	11	* 4404160814	INLET ASSEMBLY 110 1400-1600
5	4404260211	FILTER LID BOLTS	11	* 4404160815	INLET ASSEMBLY 125 1600
6	4404260210	PRESSURE GAUGE ANCHOR	11	* 4404160832	INLET ASSEMBLY 90 1800
6	4404160806	AIR PURGE 3/4"	11	* 4404160833	INLET ASSEMBLY 110 1800-2000
7	4404160807	BALL VALVE 3/4"	11	* 4404160834	INLET ASSEMBLY 125 1800-2000
8	4404160808	WATER PURGE 3/4"	11	* 4404160816	INLET ASSEMBLY 140 1800-2000
9	4404160809	20-SCREW NECK RING	11	* 4404160817	INLET ASSEMBLY 160 2000
10	4404160810	SAND DRAINAGE COVER	12	* 4404300916	MANIFOLD ARM 1" 225 M "

* -> SEE OBSERVATIONS SHEET

CODE **20068 1", 20069 1", 20070 1", 20071 1", 20072 1", 21497 1", 21498 1", 21499 1", 21500 1", 21501 1", 21502 1", 21503 1", 21504 1", 21505 1", 21506 1", 21507 1", 21508 1", 21509 1", 21510 1"**

DESCRIPTION: **EUROPA FILTER (PREVIOUS MODEL - 1" ARMS) 1M. 2,5 KG. D.1050-1200-1400-1**

11	* 4404160811	INLET ASSEMBLY 63 1050	12	* 4404300915	MANIFOLD ARM 1" 175 M "
11	* 4404160812	INLETASSEMBLY 75 1050	12	* 4404300917	MANIFOLD ARM 1" 110 M "
13	4404170104	PRESSURE FITTINGS + TUBE	17	* 4404160059	DIFFUSER ASSEMBLY D. 160 - 2000
14	4404170103	AIR BLEED ASSEMBLY	18	4404160847	FILTER LID D. 220 BLACK
15	* 4404160835	OUTLET ASSEMBLY EUROPE D.63 FOR 1050	19	4404260106	VALVE TOP RING FIXING GASKET
15	* 4404160836	OUTLET ASSEMBLY EUROPE D.75 FOR 1050	20	4404160849	LID FIXING RING
15	* 4404160837	OUTLET ASSEMBLY EUROPE D.90 FOR 1050	21	4404160850	LID ANCHOR BOLTS M8
15	* 4404160838	OUTLET ASSEMBLY EUROPE D.75 FOR 1200 - 1400	22	4404040113	DRAIN PLUG AND GASKET
15	* 4404160839	OUTLET ASSEMBLY EUROPE D.90 FOR 1200 - 1400	23	* 4404301303	MANIFOLD ARM ASSEMBLY 1" D. 1050 EUROP "
15	* 4404160840	OUTLET ASSEMBLY EUROPE D.110 FOR 1400 - 1600	23	* 4404200102	MANIFOLD ARM ASSEMBLY 1" D. 1200 EUROP "
15	* 4404160841	OUTLET ASSEMBLY EUROPE D.125 FOR 1600	23	* 4404200103	MANIFOLD ARM ASSEMBLY 1" D. 1400 EUROP "
15	* 4404160842	OUTLET ASSEMBLY EUROPE D.90 FOR 1800	23	* 4404210308	MANIFOLD ARM ASSEMBLY 1" D. 1600 EUROP "
15	* 4404160843	OUTLET ASSEMBLY EUROPE D.110 FOR 1800 - 2000	23	* 4404230106	MANIFOLD ARM ASSEMBLY 1" D. 1800 EUROP "
15	* 4404160844	OUTLET ASSEMBLY EUROPE D.125 FOR 1800 - 2000	23	* 4404230108	MANIFOLD ARM ASSEMBLY 1" D. 2000 EUROP "
15	* 4404160845	OUTLET ASSEMBLY EUROPE D.140 FOR 1800 - 2000	24	* 4404260418	UNION 1"
15	* 4404160846	OUTLET ASSEMBLY EUROPE D.160 FOR 2000	25	* 21512R0423	DIFFUSOR SUPPORT TUBE D 90 FOR 1400
16	* 4404260419	MANIFOLD ARM 1" 100 M "	25	* 21513R0423	DIFFUSOR SUPPORT TUBE D 110 FOR 1400
17	* 4404160041	DIFFUSER ASSEMBLY D. 63 - 1050	25	* 21500R0423	DIFFUSOR SUPPORT TUBE D 90 FOR 1600
17	* 4404160042	DIFFUSER ASSEMBLY D. 75 - 1050	25	* 21515R0423	DIFFUSOR SUPPORT TUBE D 110 FOR 1600
17	* 4404160043	DIFFUSER ASSEMBLY D. 90 - 1050	25	* 21502R0423	DIFFUSOR SUPPORT TUBE D 125 FOR 1600
17	* 4404160044	DIFFUSER ASSEMBLY D. 75 - 1200	25	* 21503R0423	DIFFUSOR SUPPORT TUBE D 90 FOR 1800
17	* 4404160045	DIFFUSER ASSEMBLY D. 90 - 1200	25	* 21504R0423	DIFFUSOR SUPPORT TUBE D 110 FOR 1800
17	* 4404160046	DIFFUSER ASSEMBLY D. 75 - 1400	25	* 21519R0423	DIFFUSOR SUPPORT TUBE D 125 FOR 1800
17	* 4404160047	DIFFUSER ASSEMBLY D. 90 - 1400	25	* 21506R0423	DIFFUSOR SUPPORT TUBE D 140 FOR 1800
17	* 4404160048	DIFFUSER ASSEMBLY D. 110 - 1400	25	* 21507R0423	DIFFUSOR SUPPORT TUBE D 110 FOR 2000
17	* 4404160049	DIFFUSER ASSEMBLY D. 90 - 1600	25	* 21508R0423	DIFFUSOR SUPPORT TUBE D 125 FOR 1800
17	* 4404160050	DIFFUSER ASSEMBLY D. 110 - 1600	25	* 21523R0423	DIFFUSOR SUPPORT TUBE D 140 FOR 2000
17	* 4404160051	DIFFUSER ASSEMBLY D. 125 - 1600	25	* 21510R0423	DIFFUSOR SUPPORT TUBE D 160 FOR 2000
17	* 4404160052	DIFFUSER ASSEMBLY D. 90 - 1800	26	* 20070R0150	FILTER BASE D. 1050 EUROPE
17	* 4404160053	DIFFUSER ASSEMBLY D. 110 - 1800	26	* 20068R0150	FILTER BASE D. 1200 EUROPE
17	* 4404160054	DIFFUSER ASSEMBLY D. 125 - 1800	26	* 21511R0150	BASE D 1400
17	* 4404160055	DIFFUSER ASSEMBLY D. 140 - 1800	26	* 21514R0150	FILTER BASE D. 1600 EUROPE
17	* 4404160056	DIFFUSER ASSEMBLY D. 110 - 2000	26	* 21517R0150	FILTER BASE D. 1800 EUROPE
17	* 4404160057	DIFFUSER ASSEMBLY D. 125 - 2000	26	* 21521R0150	FILTER BASE D. 2000 EUROPE
17	* 4404160058	DIFFUSER ASSEMBLY D. 140 - 2000			

CODE **20068 1", 20069 1", 20070 1", 20071 1", 20072 1", 21497 1", 21498 1", 21499 1", 21500 1", 21501 1", 21502 1", 21503 1", 21504 1", 21505 1", 21506 1", 21507 1", 21508 1", 21509 1", 21510 1"**

DESCRIPTION: EUROPA FILTER (PREVIOUS MODEL - 1" ARMS) 1M. 2,5 KG. D.1050-1200-1400-1

OBSERVATIONS

POS	CODE	OBSERVATIONS
11	4404160811	FOR: 20070 1"
11	4404160812	FOR: 20071 1"
11	4404160813	FOR: 20072 1"
11	4404160830	FOR: 20068 1", 21497 1"
11	4404160831	FOR: 20069 1", 21498 1", 21500 1"
11	4404160814	FOR: 21499 1", 21500 1"
11	4404160815	FOR: 21502 1"
11	4404160832	FOR: 21503 1"
11	4404160833	FOR: 21504 1", 21507 1"
11	4404160834	FOR: 21505 1", 21508 1"
11	4404160816	FOR: 21506 1", 21509 1"
11	4404160817	FOR: 21510 1"
12	4404300916	FOR: 20068 1" [7UT], 20069 1" [7UT], 20070 1" [2UT], 20071 1" [2UT], 20072 1" [2UT], 21497 1" [7UT], 21498 1" [7UT], 21499 1" [7UT], 21500 1" [4UT], 21501 1" [4UT], 21502 1" [4UT], 21503 1" [23UT], 21504 1" [23UT], 21505 1" [23UT], 21506 1" [23UT], 21507 1" [18UT], 21508 1" [18UT], 21509 1" [18UT], 21510 1" [18UT]
12	4404300915	FOR: 20068 1" [8UT], 20069 1" [8UT], 20070 1" [13UT], 20071 1" [13UT], 20072 1" [13UT], 21497 1" [18UT], 21498 1" [18UT], 21499 1" [18UT], 21500 1" [25UT], 21501 1" [25UT], 21502 1" [25UT], 21503 1" [10UT], 21504 1" [10UT], 21505 1" [10UT], 21506 1" [10UT], 21507 1" [15UT], 21508 1" [15UT], 21509 1" [15UT], 21510 1" [15UT]
12	4404300917	FOR: 21497 1" [2UT], 21498 1" [2UT], 21499 1" [2UT], 21500 1" [2UT], 21501 1" [2UT], 21502 1" [2UT], 21503 1" [2UT], 21504 1" [2UT], 21505 1" [2UT], 21506 1" [2UT], 21507 1" [2UT], 21508 1" [2UT], 21509 1" [2UT], 21510 1" [2UT]
15	4404160835	FOR: 20070 1"
15	4404160836	FOR: 20071 1"
15	4404160837	FOR: 20072 1"
15	4404160838	FOR: 20068 1", 21497 1"
15	4404160839	FOR: 20069 1", 21498 1", 21500 1"
15	4404160840	FOR: 21499 1", 21500 1"
15	4404160841	FOR: 21502 1"
15	4404160842	FOR: 21503 1"
15	4404160843	FOR: 21504 1", 21507 1"
15	4404160844	FOR: 21505 1", 21508 1"
15	4404160845	FOR: 21506 1", 21509 1"
15	4404160846	FOR: 21510 1"
16	4404260419	FOR: 20068 1" [6UT], 20069 1" [6UT], 20070 1" [5UT], 20071 1" [5UT], 20072 1" [5UT], 21497 1" [4UT], 21498 1" [4UT], 21499 1" [4UT], 21500 1" [7UT], 21501 1" [7UT], 21502 1" [7UT], 21503 1" [9UT], 21504 1" [9UT], 21505 1" [9UT], 21506 1" [9UT], 21507 1" [16UT], 21508 1" [16UT], 21509 1" [16UT], 21510 1" [16UT]
17	4404160041	FOR: 20070 1"
17	4404160042	FOR: 20071 1"
17	4404160043	FOR: 20072 1"
17	4404160044	FOR: 20068 1"
17	4404160045	FOR: 20069 1"
17	4404160046	FOR: 21497 1"
17	4404160047	FOR: 21498 1"
17	4404160048	FOR: 21499 1"
17	4404160049	FOR: 21500 1"

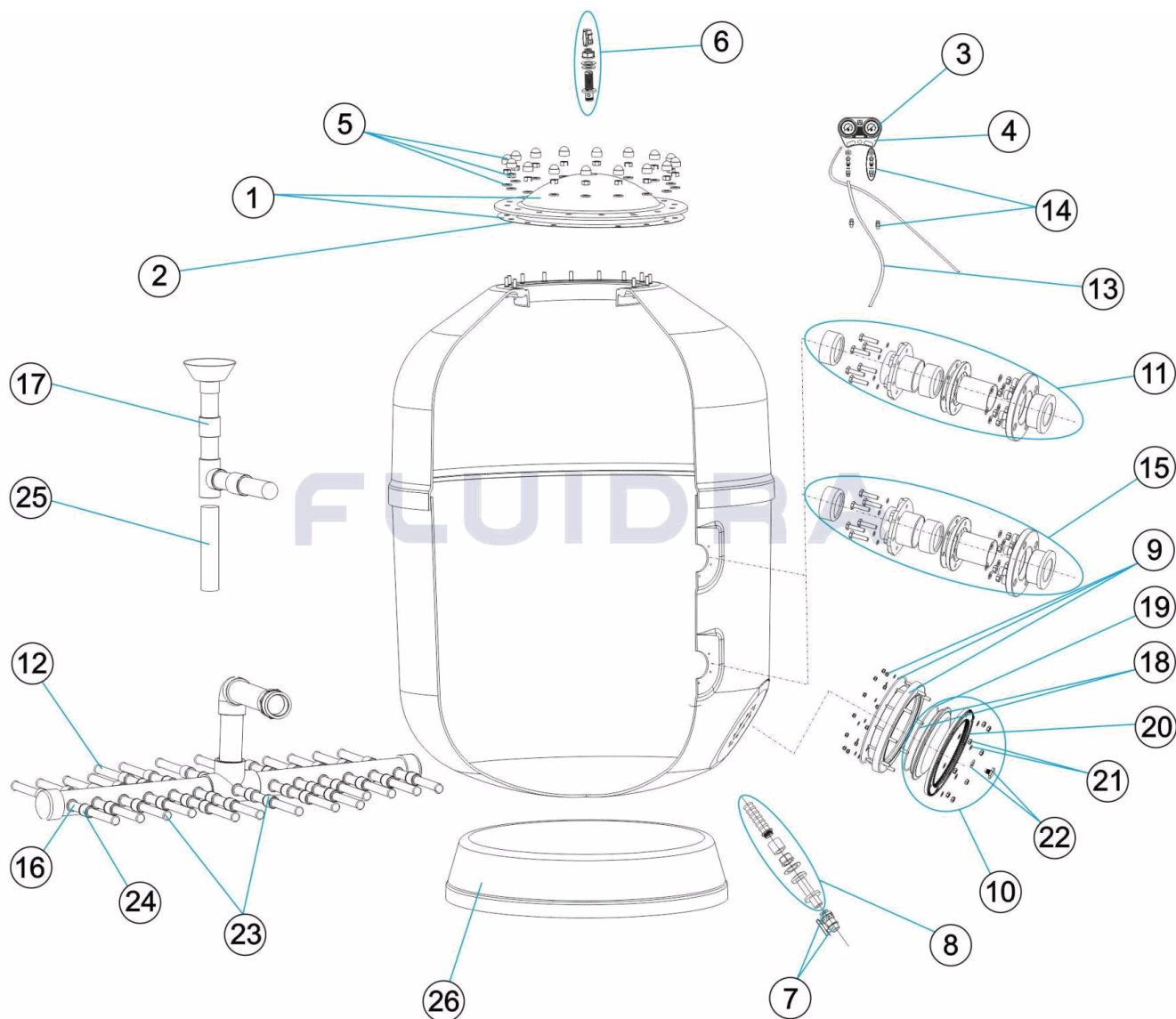
CODE **20068 1", 20069 1", 20070 1", 20071 1", 20072 1", 21497 1", 21498 1", 21499 1", 21500 1", 21501 1", 21502 1", 21503 1", 21504 1", 21505 1", 21506 1", 21507 1", 21508 1", 21509 1", 21510 1"**

DESCRIPTION: EUROPA FILTER (PREVIOUS MODEL - 1" ARMS) 1M. 2,5 KG. D.1050-1200-1400-1

17	4404160050	FOR: 21501 1"
17	4404160051	FOR: 21502 1"
17	4404160052	FOR: 21503 1"
17	4404160053	FOR: 21504 1"
17	4404160054	FOR: 21505 1"
17	4404160055	FOR: 21506 1"
17	4404160056	FOR: 21507 1"
17	4404160057	FOR: 21508 1"
17	4404160058	FOR: 21509 1"
17	4404160059	FOR: 21510 1"
23	4404301303	FOR: 20070 1", 20071 1", 20072 1"
23	4404200102	FOR: 20068 1", 20069 1"
23	4404200103	FOR: 21497 1", 21498 1", 21499 1"
23	4404210308	FOR: 21500 1", 21501 1", 21502 1"
23	4404230106	FOR: 21503 1", 21504 1", 21505 1", 21506 1"
23	4404230108	FOR: 21507 1", 21508 1", 21509 1", 21510 1"
24	4404260418	FOR: 20068 1" [6UT], 20069 1" [6UT], 20070 1" [5UT], 20071 1" [5UT], 20072 1" [5UT], 21497 1" [4UT], 21498 1" [4UT], 21499 1" [4UT], 21500 1" [7UT], 21501 1" [7UT], 21502 1" [7UT], 21503 1" [9UT], 21504 1" [9UT], 21505 1" [9UT], 21506 1" [9UT], 21507 1" [16UT], 21508 1" [16UT], 21509 1" [16UT], 21510 1" [16UT]
25	21512R0423	FOR: 21498 1"
25	21513R0423	FOR: 21499 1"
25	21500R0423	FOR: 21500 1"
25	21515R0423	FOR: 21501 1"
25	21502R0423	FOR: 21502 1"
25	21503R0423	FOR: 21503 1"
25	21504R0423	FOR: 21504 1"
25	21519R0423	FOR: 21505 1"
25	21506R0423	FOR: 21506 1"
25	21507R0423	FOR: 21507 1"
25	21508R0423	FOR: 21508 1"
25	21523R0423	FOR: 21509 1"
25	21510R0423	FOR: 21510 1"
26	20070R0150	FOR: 20070 1", 20071 1", 20072 1"
26	20068R0150	FOR: 20068 1", 20069 1"
26	21511R0150	FOR: 21497 1", 21498 1", 21499 1"
26	21514R0150	FOR: 21500 1", 21501 1", 21502 1"
26	21517R0150	FOR: 21503 1", 21504 1", 21505 1", 21506 1"
26	21521R0150	FOR: 21508 1", 21509 1"

CODICE 20068 1", 20069 1", 20070 1", 20071 1", 20072 1", 21497 1", 21498 1", 21499 1", 21500 1", 21501 1", 21502 1", 21503 1", 21504 1", 21505 1", 21506 1", 21507 1", 21508 1", 21509 1", 21510 1"

DESCRIZIONE: FILTRO EUROPA (MODELLO PRECEDENTE - CANDELOTTI 1") 1M. 2,5 KG. D.105



ITALIANO

POS	CODICE	DESCRIZIONE	POS	CODICE	DESCRIZIONE
1	4404160102	COPERCHIO FILTRO + GUARNIZIONE	11	* 4404160813	GRUPPO ENTRATA 90 1050
2	4404160101	O-RING COPERCHIO	11	* 4404160830	GRUPPO ENTRATA 75 1200-1400
3	4404170102	MANOMETRO 3 ATM	11	* 4404160831	GRUPPO ENTRATA 90 1200-1400-1600
4	4404170105	CORPO PANNELLO MANOMETRI	11	* 4404160814	GRUPPO ENTRATA 110 1400-1600
5	4404260211	BULLONERIA COPERCHIO FILTRO	11	* 4404160815	GRUPPO ENTRATA 125 1600
6	4404260210	FISSAGGIO MANOMETRO	11	* 4404160832	GRUPPO ENTRATA 90 1800
6	4404160806	SFIATO ARIA 3/4"	11	* 4404160833	GRUPPO ENTRATA 110 1800-2000
7	4404160807	VALVOLA A SFERA 3/4"	11	* 4404160834	GRUPPO ENTRATA 125 1800-2000
8	4404160808	SCARICO ACQUA 3/4"	11	* 4404160816	GRUPPO ENTRATA 140 1800-2000
9	4404160809	ANELLO COLLO 20 VITI	11	* 4404160817	GRUPPO ENTRATA 160 2000
10	4404160810	COPERCHIO SVUOTAMENTO SABBIA	12	* 4404300916	CANDELOTTO COLLECTORE 1" 225 M "

* -> SI FACCIA RIFERIMENTO AL FOGLIO DELLE OSSERVAZIONI

CODICE **20068 1", 20069 1", 20070 1", 20071 1", 20072 1", 21497 1", 21498 1", 21499 1", 21500 1", 21501 1", 21502 1", 21503 1", 21504 1", 21505 1", 21506 1", 21507 1", 21508 1", 21509 1", 21510 1"**

DESCRIZIONE: FILTRO EUROPA (MODELLO PRECEDENTE - CANDELOTTI 1") 1M. 2,5 KG. D.105

11	* 4404160811	GRUPPO ENTRATA 63 1050	12	* 4404300915	CANDELOTTO COLLECTORE 1" 175 M "
11	* 4404160812	GRUPPO ENTRATA 75 1050	12	* 4404300917	CANDELOTTO COLLECTORE 1" 110 M "
13	4404170104	RACCORDO PANNELLO + TUBO	17	* 4404160059	RACCORDO DIFFUSORE D. 160 - 2000
14	4404170103	SFIATO PANNELLO MANOMETRI	18	4404160847	COPERCHIO FILTRO D. 220 NERO
15	* 4404160835	KIT USCITE D. 63 FILTRO EUROPE D. 1050	19	4404260106	GUARNIZIONE FLANGIA FISSAGGIO VALVOLE TOP
15	* 4404160836	KIT USCITE D. 75 FILTRO EUROPE D. 1050	20	4404160849	FLANGIA FISSAGGIO COPERCHIO
15	* 4404160837	KIT USCITE D. 90 FILTRO EUROPE D. 1050	21	4404160850	BULLONERIA FISSAGGIO COPERCHIO M8
15	* 4404160838	KIT USCITE D. 75 FILTRO EUROPE D. 1200-1400	22	4404040113	TAPPO SPURGO E GUARNIZIONE
15	* 4404160839	KIT USCITE D. 90 FILTRO EUROPE D. 1200-1400	23	* 4404301303	GRUPPO CANDELOTTO COLLECTORE 1" D. 1050 E
15	* 4404160840	KIT USCITE D. 110 FILTRO EUROPE D. 1400-1600	23	* 4404200102	GRUPPO CANDELOTTO COLLECTORE 1" D. 1200 E
15	* 4404160841	KIT USCITE D. 125 FILTRO EUROPE D. 1600	23	* 4404200103	GRUPPO CANDELOTTO COLLECTORE 1" D. 1400 E
15	* 4404160842	KIT USCITE D. 90 FILTRO EUROPE D. 1800	23	* 4404210308	GRUPPO CANDELOTTO COLLECTORE 1" D. 1600 E
15	* 4404160843	KIT USCITE D. 110 FILTRO EUROPE D. 1800-2000	23	* 4404230106	GRUPPO CANDELOTTO COLLECTORE 1" D. 1800 E
15	* 4404160844	ENSEMBLE SORTIE EUROPE D.125 POUR 1800-2000	23	* 4404230108	GRUPPO CANDELOTTO COLLECTORE 1" D. 2000 E
15	* 4404160845	KIT USCITE D. 140 FILTRO EUROPE D. 1800-2000	24	* 4404260418	MANICOTTO DA 1" PER CANDELOTT "
15	* 4404160846	KIT USCITE D. 160 FILTRO EUROPE D. 2000	25	* 21512R0423	TUBO SUPPORTO DIFFUSORE D. 90 PER 1400
16	* 4404260419	CANDELOTTO COLLECTORE 1" 100M "	25	* 21513R0423	TUBO SUPPORTO DIFFUSORE D. 110 PER 1400
17	* 4404160041	RACCORDO DIFFUSORE D. 63 - 1050	25	* 21500R0423	TUBO SUPPORTO DIFFUSORE D. 90 PER 1600
17	* 4404160042	RACCORDO DIFFUSORE D. 75 - 1050	25	* 21515R0423	TUBO SUPPORTO DIFFUSORE D. 110 PER 1600
17	* 4404160043	RACCORDO DIFFUSORE D. 90 - 1050	25	* 21502R0423	TUBO SUPPORTO DIFFUSORE D. 125 PER 1600
17	* 4404160044	RACCORDO DIFFUSORE D. 75 - 1200	25	* 21503R0423	TUBO SUPPORTO DIFFUSORE D. 90 PER 1800
17	* 4404160045	RACCORDO DIFFUSORE D. 90 - 1200	25	* 21504R0423	TUBO SUPPORTO DIFFUSORE D. 110 PER 1800
17	* 4404160046	RACCORDO DIFFUSORE D. 75 - 1400	25	* 21519R0423	TUBO SUPPORTO DIFFUSORE D. 125 PER 1800
17	* 4404160047	RACCORDO DIFFUSORE D. 90 - 1400	25	* 21506R0423	TUBO SUPPORTO DIFFUSORE D. 140 PER 1800
17	* 4404160048	RACCORDO DIFFUSORE D. 110 - 1400	25	* 21507R0423	TUBO SUPPORTO DIFFUSORE D. 110 PER 2000
17	* 4404160049	RACCORDO DIFFUSORE D. 90 - 1600	25	* 21508R0423	TUBO SUPPORTO DIFFUSORE D. 125 PER 2000
17	* 4404160050	RACCORDO DIFFUSORE D. 110 - 1600	25	* 21523R0423	TUBO SUPPORTO DIFFUSORE D. 140 PER 2000
17	* 4404160051	RACCORDO DIFFUSORE D. 125 - 1600	25	* 21510R0423	TUBO SUPPORTO DIFFUSORE D. 160 PER 2000
17	* 4404160052	RACCORDO DIFFUSORE D. 90 - 1800	26	* 20070R0150	BASE FILTRO D 1050 EUROPE
17	* 4404160053	RACCORDO DIFFUSORE D. 110 - 1800	26	* 20068R0150	BASE FILTRO D 1200 EUROPE
17	* 4404160054	RACCORDO DIFFUSORE D. 125 - 1800	26	* 21511R0150	BASE D. 1400
17	* 4404160055	RACCORDO DIFFUSORE D. 140 - 1800	26	* 21514R0150	BASE FILTRO D 1600 EUROPE
17	* 4404160056	RACCORDO DIFFUSORE D. 110 - 2000	26	* 21517R0150	BASE FILTRO D 1800 EUROPE
17	* 4404160057	RACCORDO DIFFUSORE D. 125 - 2000	26	* 21521R0150	BASE FILTRO D 2000 EUROPE
17	* 4404160058	RACCORDO DIFFUSORE D. 140 - 2000			

CODICE **20068 1", 20069 1", 20070 1", 20071 1", 20072 1", 21497 1", 21498 1", 21499 1", 21500 1", 21501 1", 21502 1", 21503 1", 21504 1", 21505 1", 21506 1", 21507 1", 21508 1", 21509 1", 21510 1"**

DESCRIZIONE: FILTRO EUROPA (MODELLO PRECEDENTE - CANDELOTTI 1") 1M. 2,5 KG. D.105

OSSERVAZIONI

POS	CODICE	OSSERVAZIONI
11	4404160811	PER: 20070 1"
11	4404160812	PER: 20071 1"
11	4404160813	PER: 20072 1"
11	4404160830	PER: 20068 1", 21497 1"
11	4404160831	PER: 20069 1", 21498 1", 21500 1"
11	4404160814	PER: 21499 1", 21500 1"
11	4404160815	PER: 21502 1"
11	4404160832	PER: 21503 1"
11	4404160833	PER: 21504 1", 21507 1"
11	4404160834	PER: 21505 1", 21508 1"
11	4404160816	PER: 21506 1", 21509 1"
11	4404160817	PER: 21510 1"
12	4404300916	PER: 20068 1" [7UT], 20069 1" [7UT], 20070 1" [2UT], 20071 1" [2UT], 20072 1" [2UT], 21497 1" [7UT], 21498 1" [7UT], 21499 1" [7UT], 21500 1" [4UT], 21501 1" [4UT], 21502 1" [4UT], 21503 1" [23UT], 21504 1" [23UT], 21505 1" [23UT], 21506 1" [23UT], 21507 1" [18UT], 21508 1" [18UT], 21509 1" [18UT], 21510 1" [18UT]
12	4404300915	PER: 20068 1" [8UT], 20069 1" [8UT], 20070 1" [13UT], 20071 1" [13UT], 20072 1" [13UT], 21497 1" [18UT], 21498 1" [18UT], 21499 1" [18UT], 21500 1" [25UT], 21501 1" [25UT], 21502 1" [25UT], 21503 1" [10UT], 21504 1" [10UT], 21505 1" [10UT], 21506 1" [10UT], 21507 1" [15UT], 21508 1" [15UT], 21509 1" [15UT], 21510 1" [15UT]
12	4404300917	PER: 21497 1" [2UT], 21498 1" [2UT], 21499 1" [2UT], 21500 1" [2UT], 21501 1" [2UT], 21502 1" [2UT], 21503 1" [2UT], 21504 1" [2UT], 21505 1" [2UT], 21506 1" [2UT], 21507 1" [2UT], 21508 1" [2UT], 21509 1" [2UT], 21510 1" [2UT]
15	4404160835	PER: 20070 1"
15	4404160836	PER: 20071 1"
15	4404160837	PER: 20072 1"
15	4404160838	PER: 20068 1", 21497 1"
15	4404160839	PER: 20069 1", 21498 1", 21500 1"
15	4404160840	PER: 21499 1", 21500 1"
15	4404160841	PER: 21502 1"
15	4404160842	PER: 21503 1"
15	4404160843	PER: 21504 1", 21507 1"
15	4404160844	PER: 21505 1", 21508 1"
15	4404160845	PER: 21506 1", 21509 1"
15	4404160846	PER: 21510 1"
16	4404260419	PER: 20068 1" [6UT], 20069 1" [6UT], 20070 1" [5UT], 20071 1" [5UT], 20072 1" [5UT], 21497 1" [4UT], 21498 1" [4UT], 21499 1" [4UT], 21500 1" [7UT], 21501 1" [7UT], 21502 1" [7UT], 21503 1" [9UT], 21504 1" [9UT], 21505 1" [9UT], 21506 1" [9UT], 21507 1" [16UT], 21508 1" [16UT], 21509 1" [16UT], 21510 1" [16UT]
17	4404160041	PER: 20070 1"
17	4404160042	PER: 20071 1"
17	4404160043	PER: 20072 1"
17	4404160044	PER: 20068 1"
17	4404160045	PER: 20069 1"
17	4404160046	PER: 21497 1"
17	4404160047	PER: 21498 1"
17	4404160048	PER: 21499 1"
17	4404160049	PER: 21500 1"

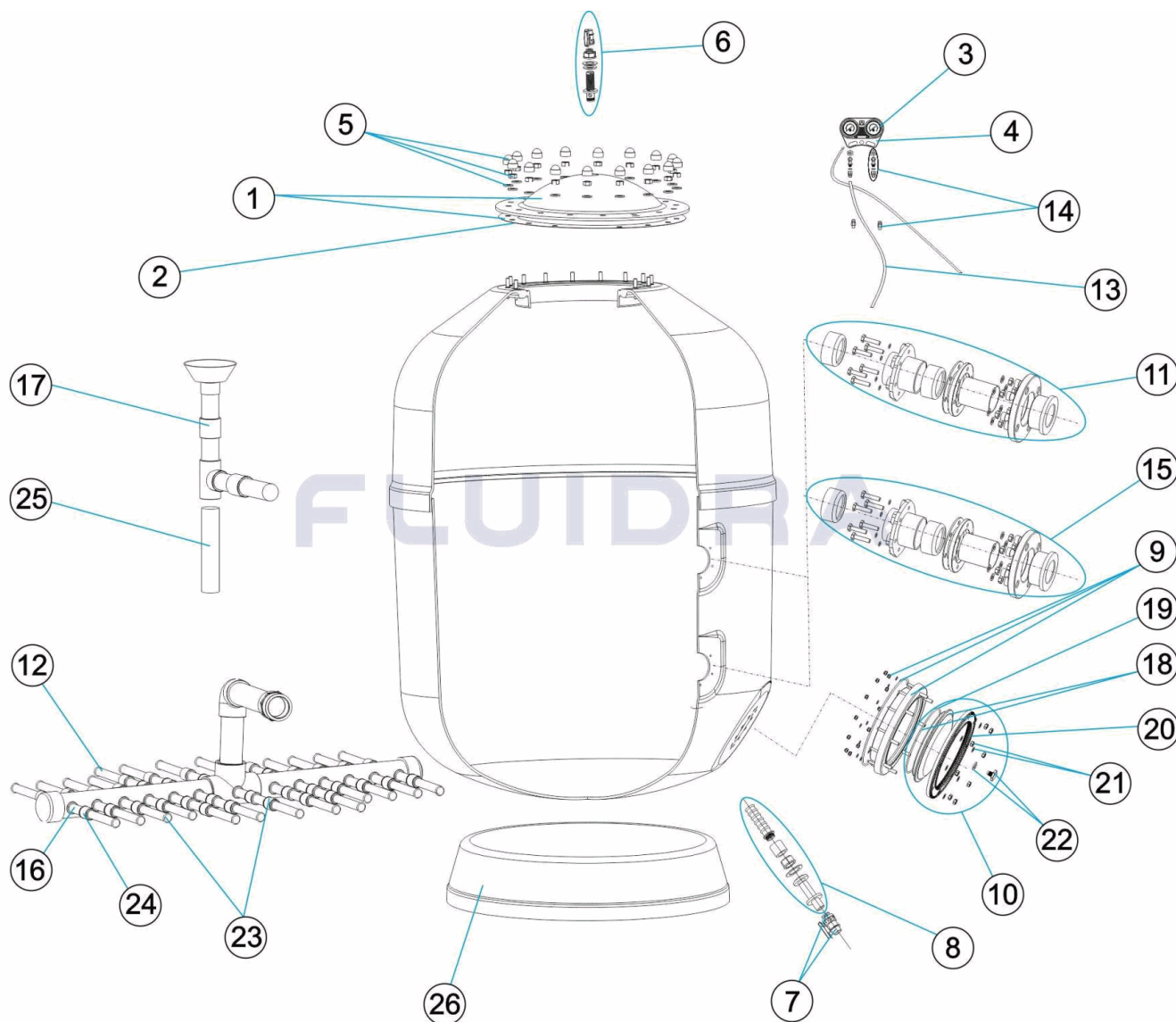
CODICE **20068 1", 20069 1", 20070 1", 20071 1", 20072 1", 21497 1", 21498 1", 21499 1", 21500 1", 21501 1", 21502 1", 21503 1", 21504 1", 21505 1", 21506 1", 21507 1", 21508 1", 21509 1", 21510 1"**

DESCRIZIONE: FILTRO EUROPA (MODELLO PRECEDENTE - CANDELOTTI 1") 1M. 2,5 KG. D.105

17	4404160050	PER: 21501 1"
17	4404160051	PER: 21502 1"
17	4404160052	PER: 21503 1"
17	4404160053	PER: 21504 1"
17	4404160054	PER: 21505 1"
17	4404160055	PER: 21506 1"
17	4404160056	PER: 21507 1"
17	4404160057	PER: 21508 1"
17	4404160058	PER: 21509 1"
17	4404160059	PER: 21510 1"
23	4404301303	PER: 20070 1", 20071 1", 20072 1"
23	4404200102	PER: 20068 1", 20069 1"
23	4404200103	PER: 21497 1", 21498 1", 21499 1"
23	4404210308	PER: 21500 1", 21501 1", 21502 1"
23	4404230106	PER: 21503 1", 21504 1", 21505 1", 21506 1"
23	4404230108	PER: 21507 1", 21508 1", 21509 1", 21510 1"
24	4404260418	PER: 20068 1" [6UT], 20069 1" [6UT], 20070 1" [5UT], 20071 1" [5UT], 20072 1" [5UT], 21497 1" [4UT], 21498 1" [4UT], 21499 1" [4UT], 21500 1" [7UT], 21501 1" [7UT], 21502 1" [7UT], 21503 1" [9UT], 21504 1" [9UT], 21505 1" [9UT], 21506 1" [9UT], 21507 1" [16UT], 21508 1" [16UT], 21509 1" [16UT], 21510 1" [16UT]
25	21512R0423	PER: 21498 1"
25	21513R0423	PER: 21499 1"
25	21500R0423	PER: 21500 1"
25	21515R0423	PER: 21501 1"
25	21502R0423	PER: 21502 1"
25	21503R0423	PER: 21503 1"
25	21504R0423	PER: 21504 1"
25	21519R0423	PER: 21505 1"
25	21506R0423	PER: 21506 1"
25	21507R0423	PER: 21507 1"
25	21508R0423	PER: 21508 1"
25	21523R0423	PER: 21509 1"
25	21510R0423	PER: 21510 1"
26	20070R0150	PER: 20070 1", 20071 1", 20072 1"
26	20068R0150	PER: 20068 1", 20069 1"
26	21511R0150	PER: 21497 1", 21498 1", 21499 1"
26	21514R0150	PER: 21500 1", 21501 1", 21502 1"
26	21517R0150	PER: 21503 1", 21504 1", 21505 1", 21506 1"
26	21521R0150	PER: 21508 1", 21509 1"

CODE 20068 1", 20069 1", 20070 1", 20071 1", 20072 1", 21497 1", 21498 1", 21499 1", 21500 1", 21501 1", 21502 1", 21503 1", 21504 1", 21505 1", 21506 1", 21507 1", 21508 1", 21509 1", 21510 1"

BESCHREIBUNG: FILTER EUROPA (VORMODELL - SCHLITZROHRE 1") 1M 2,5 KG D.1050-1200-1


DEUTSCH

POS	CODE	BESCHREIBUNG	POS	CODE	BESCHREIBUNG
1	4404160102	FILTERDECKEL UND DICHTUNG	11	* 4404160813	SET EINGANG EUROPE D. 90 FÜR 1050
2	4404160101	O-RING ABDECKUNG	11	* 4404160830	SET EINGANG EUROPE D. 75 FÜR 1200 - 1400
3	4404170102	MANOMETER 3 ATM	11	* 4404160831	SET EINGANG EUROPE D. 90 FÜR 1200 - 1400 - 1600
4	4404170105	GEHÄUSE MANOMETER	11	* 4404160814	SET EINGANG EUROPE D. 110 FÜR 1400 - 1600
5	4404260211	SCHRAUBENSATZ FILTERDECKEL	11	* 4404160815	SET EINGANG EUROPE D. 125 FÜR 1600
6	4404260210	FIXIERUNG MANOMETER	11	* 4404160832	SET EINGANG EUROPE D. 90 FÜR 1800
6	4404160806	ENTLÜFTUNG 3/4"	11	* 4404160833	SET EINGANG EUROPE D. 110 FÜR 1800 - 2000
7	4404160807	KUGELVENTIL 3/4"	11	* 4404160834	SET EINGANG EUROPE D. 125 FÜR 1800 - 2000
8	4404160808	WASSERABLAß 3/4"	11	* 4404160816	SET EINGANG EUROPE D. 140 FÜR 1800 - 2000
9	4404160809	FILTERRING 20 SCHRAUBEN	11	* 4404160817	SET EINGANG EUROPE D. 160 FÜR 2000
10	4404160810	ABDECKUNG SANDAUSLAß	12	* 4404300916	FILTERSTERN-SCHLITZROHR 1" 225 M "

CODE **20068 1", 20069 1", 20070 1", 20071 1", 20072 1", 21497 1", 21498 1", 21499 1", 21500 1", 21501 1", 21502 1", 21503 1", 21504 1", 21505 1", 21506 1", 21507 1", 21508 1", 21509 1", 21510 1"**

BESCHREIBUNG: **FILTER EUROPA (VORMODELL - SCHLITZROHRE 1") 1M 2,5 KG D.1050-1200-1**

11	* 4404160811	SET EINGANG EUROPE D. 63 FÜR 1050	12	* 4404300915	FILTERSTERN-SCHLITZROHR 1" 175 M "
11	* 4404160812	SET EINGANG EUROPE D. 75 FÜR 1050	12	* 4404300917	FILTERSTERN-SCHLITZROHR 1" 110 M "
13	4404170104	GEWINDESTÜCK MIT ROHR	17	* 4404160059	SET WASSERVERTEILER D. 160 - 2000
14	4404170103	ABLASS MANOMETER	18	4404160847	FILTERDECKEL D. 220 SCHWARZ
15	* 4404160835	SET AUSGANG EUROPE D. 63 FÜR 1050	19	4404260106	DICHTUNG FIXIERRING VENTIL
15	* 4404160836	SET AUSGANG EUROPE D. 75 FÜR 1050	20	4404160849	FIXIERRING ABDECKUNG
15	* 4404160837	SET AUSGANG EUROPE D. 90 FÜR 1050	21	4404160850	FIXIERSCHRAUBEN ABDECKUNG M8
15	* 4404160838	SET AUSGANG EUROPE D. 75 FÜR 1200 - 1400	22	4404040113	ABLASSSTOPFEN UND DICHTUNG
15	* 4404160839	SET AUSGANG EUROPE D. 90 FÜR 1200 - 1400 - 1600	23	* 4404301303	SET FILTERSTERN-SCHLITZROHR 1" D. 1050 EUROPE
15	* 4404160840	SET AUSGANG EUROPE D. 110 FÜR 1400 - 1600	23	* 4404200102	SET FILTERSTERN-SCHLITZROHR 1" D. 1200 EUROPE
15	* 4404160841	SET AUSGANG EUROPE D. 125 FÜR 1600	23	* 4404200103	SET FILTERSTERN-SCHLITZROHR 1" D. 1400 EUROPE
15	* 4404160842	SET AUSGANG EUROPE D. 90 FÜR 1800	23	* 4404210308	SET FILTERSTERN-SCHLITZROHR 1" D. 1600 EUROPE
15	* 4404160843	SET AUSGANG EUROPE D. 110 FÜR 1800 - 2000	23	* 4404230106	SET FILTERSTERN-SCHLITZROHR 1" D. 1800 EUROPE
15	* 4404160844	SET AUSGANG EUROPE D. 125 FÜR 1800 - 2000	23	* 4404230108	SET FILTERSTERN-SCHLITZROHR 1" D. 2000 EUROPE
15	* 4404160845	SET AUSGANG EUROPE D. 140 FÜR 1800 - 2000	24	* 4404260418	NIPPEL ANSCHLUSSVERBINDUNG 1"
15	* 4404160846	SET AUSGANG EUROPE D. 160 FÜR 2000	25	* 21512R0423	HALTERUNG WASSERVERTEILER D. 90 FÜR 1400
16	* 4404260419	FILTERSTERN-SCHLITZROHR 1" 100 M "	25	* 21513R0423	HALTERUNG WASSERVERTEILER D. 110 FÜR 1400
17	* 4404160041	SET WASSERVERTEILER D. 63 - 1050	25	* 21500R0423	HALTERUNG WASSERVERTEILER D. 90 FÜR 1600
17	* 4404160042	SET WASSERVERTEILER D. 75 - 1050	25	* 21515R0423	SET HALTERUNG WASSERVERTEILER D. 1600 - 1100
17	* 4404160043	SET WASSERVERTEILER D. 90 - 1050	25	* 21502R0423	HALTERUNG WASSERVERTEILER D. 125 FÜR 1600
17	* 4404160044	SET WASSERVERTEILER D. 75 - 1200	25	* 21503R0423	HALTERUNG WASSERVERTEILER D. 90 FÜR 1800
17	* 4404160045	SET WASSERVERTEILER D. 90 - 1200	25	* 21504R0423	HALTERUNG WASSERVERTEILER D. 110 FÜR 1800
17	* 4404160046	SET WASSERVERTEILER D. 75 - 1400	25	* 21519R0423	HALTERUNG WASSERVERTEILER D. 125 FÜR 1800
17	* 4404160047	SET WASSERVERTEILER D. 90 - 1400	25	* 21506R0423	HALTERUNG WASSERVERTEILER D. 140 FÜR 1800
17	* 4404160048	SET WASSERVERTEILER D. 110 - 1400	25	* 21507R0423	HALTERUNG WASSERVERTEILER D. 110 FÜR 2000
17	* 4404160049	SET WASSERVERTEILER D. 90 - 1600	25	* 21508R0423	HALTERUNG WASSERVERTEILER D. 125 FÜR 2000
17	* 4404160050	SET WASSERVERTEILER D. 110 - 1600	25	* 21523R0423	HALTERUNG WASSERVERTEILER D. 140 FÜR 2000
17	* 4404160051	SET WASSERVERTEILER D. 125 - 1600	25	* 21510R0423	HALTERUNG WASSERVERTEILER D. 160 FÜR 2000
17	* 4404160052	SET WASSERVERTEILER D. 90 - 1800	26	* 20070R0150	FILTERFUSS 1050 EUROPE
17	* 4404160053	SET WASSERVERTEILER D. 110 - 1800	26	* 20068R0150	FILTERFUSS 1200 EUROPE
17	* 4404160054	SET WASSERVERTEILER D. 125 - 1800	26	* 21511R0150	FUSS D. 1400
17	* 4404160055	SET WASSERVERTEILER D. 140 - 1800	26	* 21514R0150	FILTERFUSS 1600 EUROPE
17	* 4404160056	SET WASSERVERTEILER D. 110 - 2000	26	* 21517R0150	FILTERFUSS 1800 EUROPE
17	* 4404160057	SET WASSERVERTEILER D. 125 - 2000	26	* 21521R0150	FILTERFUSS 2000 EUROPE
17	* 4404160058	SET WASSERVERTEILER D. 140 - 2000			

CODE **20068 1", 20069 1", 20070 1", 20071 1", 20072 1", 21497 1", 21498 1", 21499 1", 21500 1", 21501 1", 21502 1", 21503 1", 21504 1", 21505 1", 21506 1", 21507 1", 21508 1", 21509 1", 21510 1"**

BESCHREIBUNG: FILTER EUROPA (VORMODELL - SCHLITZROHRE 1") 1M 2,5 KG D.1050-1200-1

HINWEISE

POS	CODE	HINWEISE
11	4404160811	FÜR: 20070 1"
11	4404160812	FÜR: 20071 1"
11	4404160813	FÜR: 20072 1"
11	4404160830	FÜR: 20068 1", 21497 1"
11	4404160831	FÜR: 20069 1", 21498 1", 21500 1"
11	4404160814	FÜR: 21499 1", 21500 1"
11	4404160815	FÜR: 21502 1"
11	4404160832	FÜR: 21503 1"
11	4404160833	FÜR: 21504 1", 21507 1"
11	4404160834	FÜR: 21505 1", 21508 1"
11	4404160816	FÜR: 21506 1", 21509 1"
11	4404160817	FÜR: 21510 1"
12	4404300916	FÜR: 20068 1" [7UT], 20069 1" [7UT], 20070 1" [2UT], 20071 1" [2UT], 20072 1" [2UT], 21497 1" [7UT], 21498 1" [7UT], 21499 1" [7UT], 21500 1" [4UT], 21501 1" [4UT], 21502 1" [4UT], 21503 1" [23UT], 21504 1" [23UT], 21505 1" [23UT], 21506 1" [23UT], 21507 1" [18UT], 21508 1" [18UT], 21509 1" [18UT], 21510 1" [18UT]
12	4404300915	FÜR: 20068 1" [8UT], 20069 1" [8UT], 20070 1" [13UT], 20071 1" [13UT], 20072 1" [13UT], 21497 1" [18UT], 21498 1" [18UT], 21499 1" [18UT], 21500 1" [25UT], 21501 1" [25UT], 21502 1" [25UT], 21503 1" [10UT], 21504 1" [10UT], 21505 1" [10UT], 21506 1" [10UT], 21507 1" [15UT], 21508 1" [15UT], 21509 1" [15UT], 21510 1" [15UT]
12	4404300917	FÜR: 21497 1" [2UT], 21498 1" [2UT], 21499 1" [2UT], 21500 1" [2UT], 21501 1" [2UT], 21502 1" [2UT], 21503 1" [2UT], 21504 1" [2UT], 21505 1" [2UT], 21506 1" [2UT], 21507 1" [2UT], 21508 1" [2UT], 21509 1" [2UT], 21510 1" [2UT]
15	4404160835	FÜR: 20070 1"
15	4404160836	FÜR: 20071 1"
15	4404160837	FÜR: 20072 1"
15	4404160838	FÜR: 20068 1", 21497 1"
15	4404160839	FÜR: 20069 1", 21498 1", 21500 1"
15	4404160840	FÜR: 21499 1", 21500 1"
15	4404160841	FÜR: 21502 1"
15	4404160842	FÜR: 21503 1"
15	4404160843	FÜR: 21504 1", 21507 1"
15	4404160844	FÜR: 21505 1", 21508 1"
15	4404160845	FÜR: 21506 1", 21509 1"
15	4404160846	FÜR: 21510 1"
16	4404260419	FÜR: 20068 1" [6UT], 20069 1" [6UT], 20070 1" [5UT], 20071 1" [5UT], 20072 1" [5UT], 21497 1" [4UT], 21498 1" [4UT], 21499 1" [4UT], 21500 1" [7UT], 21501 1" [7UT], 21502 1" [7UT], 21503 1" [9UT], 21504 1" [9UT], 21505 1" [9UT], 21506 1" [9UT], 21507 1" [16UT], 21508 1" [16UT], 21509 1" [16UT], 21510 1" [16UT]
17	4404160041	FÜR: 20070 1"
17	4404160042	FÜR: 20071 1"
17	4404160043	FÜR: 20072 1"
17	4404160044	FÜR: 20068 1"
17	4404160045	FÜR: 20069 1"
17	4404160046	FÜR: 21497 1"
17	4404160047	FÜR: 21498 1"
17	4404160048	FÜR: 21499 1"
17	4404160049	FÜR: 21500 1"

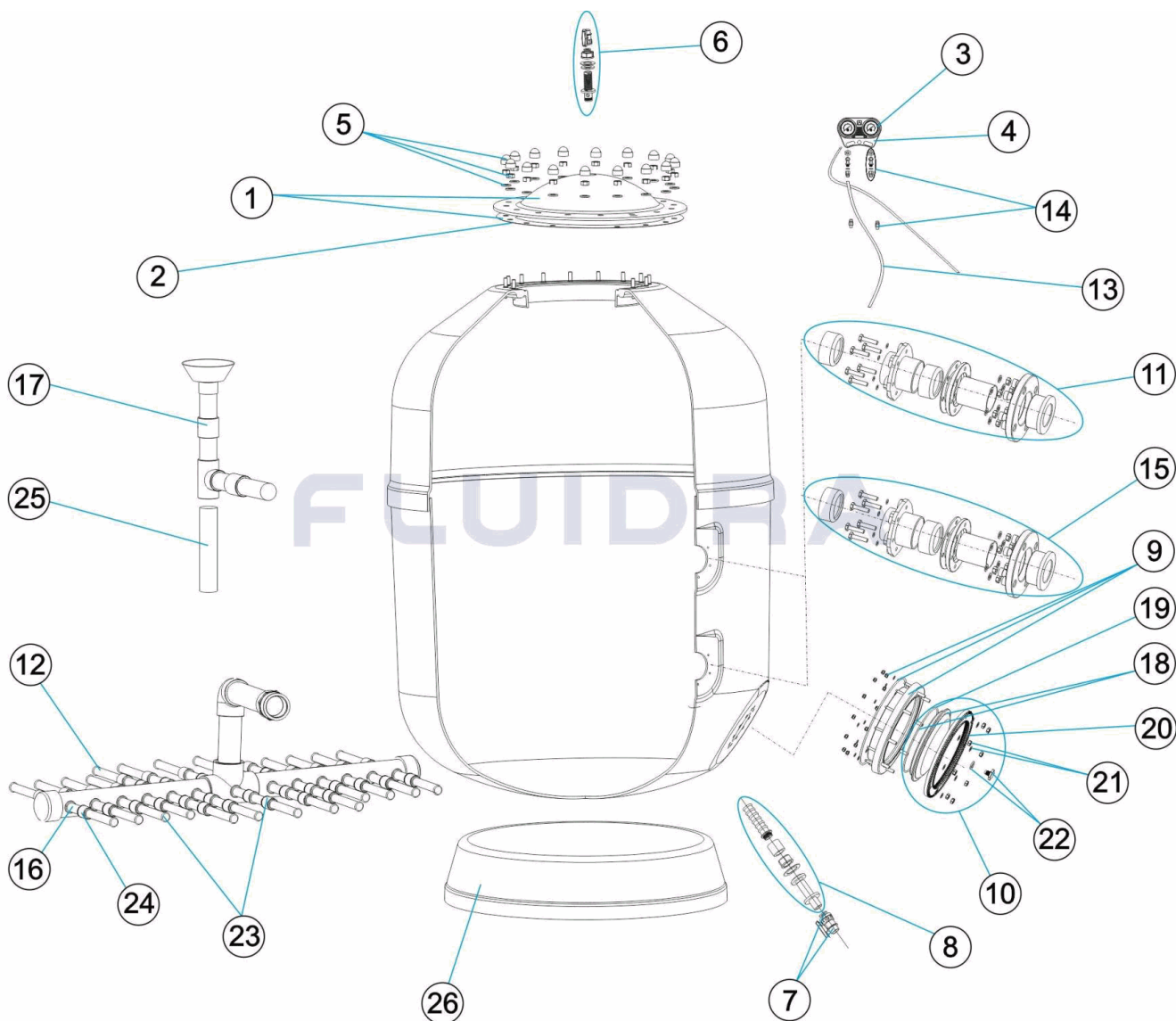
CODE **20068 1", 20069 1", 20070 1", 20071 1", 20072 1", 21497 1", 21498 1", 21499 1", 21500 1", 21501 1", 21502 1", 21503 1", 21504 1", 21505 1", 21506 1", 21507 1", 21508 1", 21509 1", 21510 1"**

BESCHREIBUNG: **FILTER EUROPA (VORMODELL - SCHLITZROHRE 1") 1M 2,5 KG D.1050-1200-1**

17	4404160050	FÜR: 21501 1"
17	4404160051	FÜR: 21502 1"
17	4404160052	FÜR: 21503 1"
17	4404160053	FÜR: 21504 1"
17	4404160054	FÜR: 21505 1"
17	4404160055	FÜR: 21506 1"
17	4404160056	FÜR: 21507 1"
17	4404160057	FÜR: 21508 1"
17	4404160058	FÜR: 21509 1"
17	4404160059	FÜR: 21510 1"
23	4404301303	FÜR: 20070 1", 20071 1", 20072 1"
23	4404200102	FÜR: 20068 1", 20069 1"
23	4404200103	FÜR: 21497 1", 21498 1", 21499 1"
23	4404210308	FÜR: 21500 1", 21501 1", 21502 1"
23	4404230106	FÜR: 21503 1", 21504 1", 21505 1", 21506 1"
23	4404230108	FÜR: 21507 1", 21508 1", 21509 1", 21510 1"
24	4404260418	FÜR: 20068 1" [6UT], 20069 1" [6UT], 20070 1" [5UT], 20071 1" [5UT], 20072 1" [5UT], 21497 1" [4UT], 21498 1" [4UT], 21499 1" [4UT], 21500 1" [7UT], 21501 1" [7UT], 21502 1" [7UT], 21503 1" [9UT], 21504 1" [9UT], 21505 1" [9UT], 21506 1" [9UT], 21507 1" [16UT], 21508 1" [16UT], 21509 1" [16UT], 21510 1" [16UT]
25	21512R0423	FÜR: 21498 1"
25	21513R0423	FÜR: 21499 1"
25	21500R0423	FÜR: 21500 1"
25	21515R0423	FÜR: 21501 1"
25	21502R0423	FÜR: 21502 1"
25	21503R0423	FÜR: 21503 1"
25	21504R0423	FÜR: 21504 1"
25	21519R0423	FÜR: 21505 1"
25	21506R0423	FÜR: 21506 1"
25	21507R0423	FÜR: 21507 1"
25	21508R0423	FÜR: 21508 1"
25	21523R0423	FÜR: 21509 1"
25	21510R0423	FÜR: 21510 1"
26	20070R0150	FÜR: 20070 1", 20071 1", 20072 1"
26	20068R0150	FÜR: 20068 1", 20069 1"
26	21511R0150	FÜR: 21497 1", 21498 1", 21499 1"
26	21514R0150	FÜR: 21500 1", 21501 1", 21502 1"
26	21517R0150	FÜR: 21503 1", 21504 1", 21505 1", 21506 1"
26	21521R0150	FÜR: 21508 1", 21509 1"

CODIGO 20068 1", 20069 1", 20070 1", 20071 1", 20072 1", 21497 1", 21498 1", 21499 1", 21500 1", 21501 1", 21502 1", 21503 1", 21504 1", 21505 1", 21506 1", 21507 1", 21508 1", 21509 1", 21510 1"

DESCRIÇÃO: FILTRO EUROPA (MODELO ANTIGO - BRAÇOS 1") 1M. 2,5 KG. D.1050-1200-1400-1



PORTUGUES

POS	CODIGO	DESCRIÇÃO	POS	CODIGO	DESCRIÇÃO
1	4404160102	TAMPA FILTRO + JUNTA	11	* 4404160813	CONJUNTO ENTRADA 90 1050
2	4404160101	JUNTA TÓRICA TAMPA	11	* 4404160830	CONJUNTO ENTRADA 75 1200-1400
3	4404170102	MANÔMETRO 3 ATM	11	* 4404160831	CONJUNTO ENTRADA 90 1200-1400-1600
4	4404170105	CORPO PAINEL MANÔMETRO	11	* 4404160814	CONJUNTO ENTRADA 110 1400-1600
5	4404260211	PARAFUSOS TAMPA FILTRO	11	* 4404160815	CONJUNTO ENTRADA 125 1600
6	4404260210	FIXAÇÃO MANOMETRO	11	* 4404160832	CONJUNTO ENTRADA 90 1800
6	4404160806	PURGA AREIA 3/4"	11	* 4404160833	CONJUNTO ENTRADA 110 1800-2000
7	4404160807	VALVULA BOLA 3/4"	11	* 4404160834	CONJUNTO ENTRADA 125 1800-2000
8	4404160808	PURGA ÁGUA 3/4"	11	* 4404160816	CONJUNTO ENTRADA 140 1800-2000
9	4404160809	ARO PESCOCOÇO 20 PARAFUSOS	11	* 4404160817	CONJUNTO ENTRADA 160 2000
10	4404160810	TAMPA ESVAZIAMENTO AREIA	12	* 4404300916	BRAÇO COLECTOR 1" 225 M "

* -> VEJA A FICHA DE OBSERVAÇÕES

CODIGO **20068 1", 20069 1", 20070 1", 20071 1", 20072 1", 21497 1", 21498 1", 21499 1", 21500 1", 21501 1", 21502 1", 21503 1", 21504 1", 21505 1", 21506 1", 21507 1", 21508 1", 21509 1", 21510 1"**

DESCRIÇÃO: FILTRO EUROPA (MODELO ANTIGO - BRAÇOS 1") 1M. 2,5 KG. D.1050-1200-1400-1

11	* 4404160811	CONJUNTO ENTRADA 63 1050	12	* 4404300915	BRAÇO COLECTOR 1" 175 M "
11	* 4404160812	CONJUNTO ENTRADA 75 1050	12	* 4404300917	BRAÇO COLECTOR 1" 110 M "
13	4404170104	RACORD PAINEL + TUBO	17	* 4404160059	CJTO. DIFUSOR D. 160 - 2000
14	4404170103	PURGA PAINEL MANÔMETROS	18	4404160847	TAMPA FILTRO D.220 NEGRA
15	* 4404160835	CONJUNTO SAIDA EUROPE D. 63 PARA 1050	19	4404260106	JUNTA ARO FIXAÇÃO VALVULA TOP
15	* 4404160836	CONJUNTO SAIDA EUROPE D. 75 PARA 1050	20	4404160849	ARO FIXAÇÃO TAMPA
15	* 4404160837	CONJUNTO SAIDA EUROPE D. 90 PARA 1050	21	4404160850	PARAFUSOS FIXAÇÃO TAMPA M8
15	* 4404160838	CONJUNTO SAIDA EUROPE D. 75 PARA 1200 - 1400	22	4404040113	TAMPÃO PURGA E JUNTA
15	* 4404160839	CONJUNTO SAIDA EUROPE D. 90 PARA 1200 - 1400	23	* 4404301303	CJTO. BRAÇO COLECTOR 1" D. 1050 EUROP "
15	* 4404160840	CONJUNTO SAIDA EUROPE D. 110 PARA 1400 - 1600	23	* 4404200102	CJTO. BRAÇO COLECTOR 1" D. 1200 EUROP "
15	* 4404160841	CONJUNTO SAIDA EUROPE D. 125 PARA 1600	23	* 4404200103	CJTO. BRAÇO COLECTOR 1" D. 1400 EUROP "
15	* 4404160842	CONJUNTO SAIDA EUROPE D. 90 PARA 1800	23	* 4404210308	CJTO. BRAÇO COLECTOR 1" D. 1600 EUROP "
15	* 4404160843	CONJUNTO SAIDA EUROPE D. 110 PARA 1800 - 2000	23	* 4404230106	CJTO. BRAÇO COLECTOR 1" D. 1800 EUROP "
15	* 4404160844	CONJUNTO SAIDA EUROPE D. 125 PARA 1800 - 2000	23	* 4404230108	CJTO. BRAÇO COLECTOR 1" D. 2000 EUROP "
15	* 4404160845	CONJUNTO SAIDA EUROPE D. 140 PARA 1800 - 2000	24	* 4404260418	RACCORD UNIÃO 1"
15	* 4404160846	CONJUNTO SAIDA EUROPE D. 160 PARA 2000	25	* 21512R0423	TUBO SUPORTE DIFUSOR D.90 PARA 1400
16	* 4404260419	BRAÇO COLECTOR 1" 100M "	25	* 21513R0423	TUBO SUPORTE DIFUSOR D.110 PARA 1400
17	* 4404160041	CJTO. DIFUSOR D. 63 - 1050	25	* 21500R0423	TUBO SUPORTE DIFUSOR D.90 PARA 1600
17	* 4404160042	CJTO. DIFUSOR D. 75 - 1050	25	* 21515R0423	TUBO SUPORTE DIFUSOR D.110 PARA 1600
17	* 4404160043	CJTO. DIFUSOR D. 90 - 1050	25	* 21502R0423	TUBO SUPORTE DIFUSOR D.125 PARA 1600
17	* 4404160044	CJTO. DIFUSOR D. 75 - 1200	25	* 21503R0423	TUBO SUPORTE DIFUSOR D.90 PARA 1800
17	* 4404160045	CJTO. DIFUSOR D. 90 - 1200	25	* 21504R0423	TUBO SUPORTE DIFUSOR D.110 PARA 1800
17	* 4404160046	CJTO. DIFUSOR D. 75 - 1400	25	* 21519R0423	TUBO SUPORTE DIFUSOR D.125 PARA 1800
17	* 4404160047	CJTO. DIFUSOR D. 90 - 1400	25	* 21506R0423	TUBO SUPORTE DIFUSOR D.140 PARA 1800
17	* 4404160048	CJTO. DIFUSOR D. 110 - 1400	25	* 21507R0423	TUBO SUPORTE DIFUSOR D.110 PARA 2000
17	* 4404160049	CJTO. DIFUSOR D. 90 - 1600	25	* 21508R0423	TUBO SUPORTE DIFUSOR D.125 PARA 2000
17	* 4404160050	CJTO. DIFUSOR D. 110 - 1600	25	* 21523R0423	TUBO SUPORTE DIFUSOR D.140 PARA 2000
17	* 4404160051	CJTO. DIFUSOR D. 125 - 1600	25	* 21510R0423	TUBO SUPORTE DIFUSOR D.160 PARA 2000
17	* 4404160052	CJTO. DIFUSOR D. 90 - 1800	26	* 20070R0150	PÉ FILTRO D 1050 EUROPE
17	* 4404160053	CJTO. DIFUSOR D. 110 - 1800	26	* 20068R0150	PÉ FILTRO D 1200 EUROPE
17	* 4404160054	CJTO. DIFUSOR D. 125 - 1800	26	* 21511R0150	PÉ D. 1400
17	* 4404160055	CJTO. DIFUSOR D. 140 - 1800	26	* 21514R0150	PÉ FILTRO D 1400 EUROPE
17	* 4404160056	CJTO. DIFUSOR D. 110 - 2000	26	* 21517R0150	PÉ FILTRO D 1800 EUROPE
17	* 4404160057	CJTO. DIFUSOR D. 125 - 2000	26	* 21521R0150	PÉ FILTRO D 2000 EUROPE
17	* 4404160058	CJTO. DIFUSOR D. 140 - 2000			

CODIGO **20068 1", 20069 1", 20070 1", 20071 1", 20072 1", 21497 1", 21498 1", 21499 1", 21500 1", 21501 1", 21502 1", 21503 1", 21504 1", 21505 1", 21506 1", 21507 1", 21508 1", 21509 1", 21510 1"**

DESCRIÇÃO: FILTRO EUROPA (MODELO ANTIGO - BRAÇOS 1") 1M. 2,5 KG. D.1050-1200-1400-1

OBSERVACÕES

POS	CODIGO	OBSERVACÕES
11	4404160811	PARA: 20070 1"
11	4404160812	PARA: 20071 1"
11	4404160813	PARA: 20072 1"
11	4404160830	PARA: 20068 1", 21497 1"
11	4404160831	PARA: 20069 1", 21498 1", 21500 1"
11	4404160814	PARA: 21499 1", 21500 1"
11	4404160815	PARA: 21502 1"
11	4404160832	PARA: 21503 1"
11	4404160833	PARA: 21504 1", 21507 1"
11	4404160834	PARA: 21505 1", 21508 1"
11	4404160816	PARA: 21506 1", 21509 1"
11	4404160817	PARA: 21510 1"
12	4404300916	PARA: 20068 1" [7UT], 20069 1" [7UT], 20070 1" [2UT], 20071 1" [2UT], 20072 1" [2UT], 21497 1" [7UT], 21498 1" [7UT], 21499 1" [7UT], 21500 1" [4UT], 21501 1" [4UT], 21502 1" [4UT], 21503 1" [23UT], 21504 1" [23UT], 21505 1" [23UT], 21506 1" [23UT], 21507 1" [18UT], 21508 1" [18UT], 21509 1" [18UT], 21510 1" [18UT]
12	4404300915	PARA: 20068 1" [8UT], 20069 1" [8UT], 20070 1" [13UT], 20071 1" [13UT], 20072 1" [13UT], 21497 1" [18UT], 21498 1" [18UT], 21499 1" [18UT], 21500 1" [25UT], 21501 1" [25UT], 21502 1" [25UT], 21503 1" [10UT], 21504 1" [10UT], 21505 1" [10UT], 21506 1" [10UT], 21507 1" [15UT], 21508 1" [15UT], 21509 1" [15UT], 21510 1" [15UT]
12	4404300917	PARA: 21497 1" [2UT], 21498 1" [2UT], 21499 1" [2UT], 21500 1" [2UT], 21501 1" [2UT], 21502 1" [2UT], 21503 1" [2UT], 21504 1" [2UT], 21505 1" [2UT], 21506 1" [2UT], 21507 1" [2UT], 21508 1" [2UT], 21509 1" [2UT], 21510 1" [2UT]
15	4404160835	PARA: 20070 1"
15	4404160836	PARA: 20071 1"
15	4404160837	PARA: 20072 1"
15	4404160838	PARA: 20068 1", 21497 1"
15	4404160839	PARA: 20069 1", 21498 1", 21500 1"
15	4404160840	PARA: 21499 1", 21500 1"
15	4404160841	PARA: 21502 1"
15	4404160842	PARA: 21503 1"
15	4404160843	PARA: 21504 1", 21507 1"
15	4404160844	PARA: 21505 1", 21508 1"
15	4404160845	PARA: 21506 1", 21509 1"
15	4404160846	PARA: 21510 1"
16	4404260419	PARA: 20068 1" [6UT], 20069 1" [6UT], 20070 1" [5UT], 20071 1" [5UT], 20072 1" [5UT], 21497 1" [4UT], 21498 1" [4UT], 21499 1" [4UT], 21500 1" [7UT], 21501 1" [7UT], 21502 1" [7UT], 21503 1" [9UT], 21504 1" [9UT], 21505 1" [9UT], 21506 1" [9UT], 21507 1" [16UT], 21508 1" [16UT], 21509 1" [16UT], 21510 1" [16UT]
17	4404160041	PARA: 20070 1"
17	4404160042	PARA: 20071 1"
17	4404160043	PARA: 20072 1"
17	4404160044	PARA: 20068 1"
17	4404160045	PARA: 20069 1"
17	4404160046	PARA: 21497 1"
17	4404160047	PARA: 21498 1"
17	4404160048	PARA: 21499 1"
17	4404160049	PARA: 21500 1"

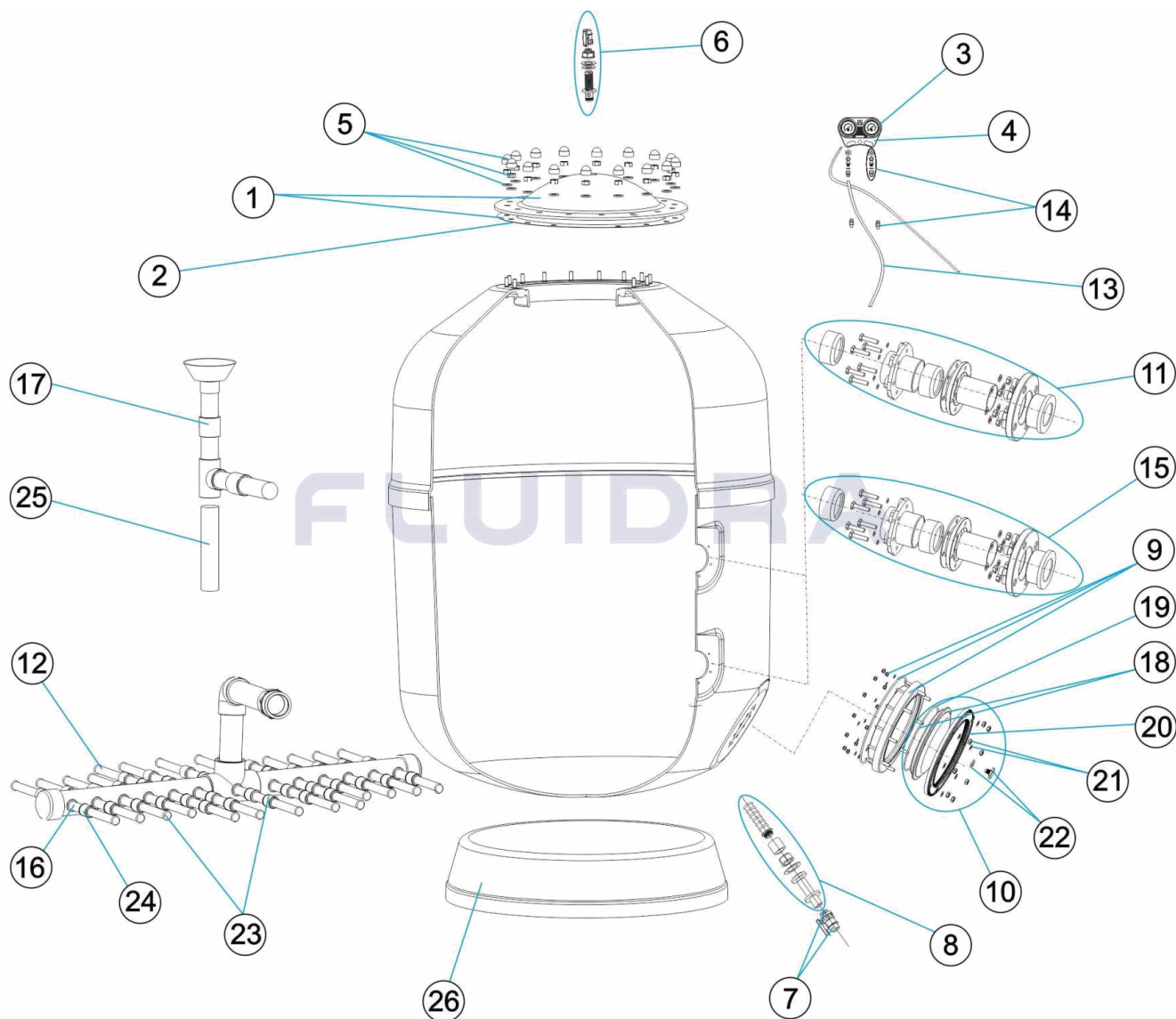
CODIGO **20068 1", 20069 1", 20070 1", 20071 1", 20072 1", 21497 1", 21498 1", 21499 1", 21500 1", 21501 1", 21502 1", 21503 1", 21504 1", 21505 1", 21506 1", 21507 1", 21508 1", 21509 1", 21510 1"**

DESCRIÇÃO: FILTRO EUROPA (MODELO ANTIGO - BRAÇOS 1") 1M. 2,5 KG. D.1050-1200-1400-1

17	4404160050	PARA: 21501 1"
17	4404160051	PARA: 21502 1"
17	4404160052	PARA: 21503 1"
17	4404160053	PARA: 21504 1"
17	4404160054	PARA: 21505 1"
17	4404160055	PARA: 21506 1"
17	4404160056	PARA: 21507 1"
17	4404160057	PARA: 21508 1"
17	4404160058	PARA: 21509 1"
17	4404160059	PARA: 21510 1"
23	4404301303	PARA: 20070 1", 20071 1", 20072 1"
23	4404200102	PARA: 20068 1", 20069 1"
23	4404200103	PARA: 21497 1", 21498 1", 21499 1"
23	4404210308	PARA: 21500 1", 21501 1", 21502 1"
23	4404230106	PARA: 21503 1", 21504 1", 21505 1", 21506 1"
23	4404230108	PARA: 21507 1", 21508 1", 21509 1", 21510 1"
24	4404260418	PARA: 20068 1" [6UT], 20069 1" [6UT], 20070 1" [5UT], 20071 1" [5UT], 20072 1" [5UT], 21497 1" [4UT], 21498 1" [4UT], 21499 1" [4UT], 21500 1" [7UT], 21501 1" [7UT], 21502 1" [7UT], 21503 1" [9UT], 21504 1" [9UT], 21505 1" [9UT], 21506 1" [9UT], 21507 1" [16UT], 21508 1" [16UT], 21509 1" [16UT], 21510 1" [16UT]
25	21512R0423	PARA: 21498 1"
25	21513R0423	PARA: 21499 1"
25	21500R0423	PARA: 21500 1"
25	21515R0423	PARA: 21501 1"
25	21502R0423	PARA: 21502 1"
25	21503R0423	PARA: 21503 1"
25	21504R0423	PARA: 21504 1"
25	21519R0423	PARA: 21505 1"
25	21506R0423	PARA: 21506 1"
25	21507R0423	PARA: 21507 1"
25	21508R0423	PARA: 21508 1"
25	21523R0423	PARA: 21509 1"
25	21510R0423	PARA: 21510 1"
26	20070R0150	PARA: 20070 1", 20071 1", 20072 1"
26	20068R0150	PARA: 20068 1", 20069 1"
26	21511R0150	PARA: 21497 1", 21498 1", 21499 1"
26	21514R0150	PARA: 21500 1", 21501 1", 21502 1"
26	21517R0150	PARA: 21503 1", 21504 1", 21505 1", 21506 1"
26	21521R0150	PARA: 21508 1", 21509 1"

CODIGO 20068 1", 20069 1", 20070 1", 20071 1", 20072 1", 21497 1", 21498 1", 21499 1", 21500 1", 21501 1", 21502 1", 21503 1", 21504 1", 21505 1", 21506 1", 21507 1", 21508 1", 21509 1", 21510 1"

DESCRIPCION: FILTRO EUROPA (MODELO ANTIGUO - BRAZOS 1") 1M. 2,5 KG. D.1050-1200-140



ESPAÑOL

POS	CODIGO	DESCRIPCION	POS	CODIGO	DESCRIPCION
1	4404160102	TAPA FILTRO + JUNTA	11	* 4404160813	CJTO. ENTRADA EUROPE D.90 PARA 1050
2	4404160101	JUNTA TORICA TAPA	11	* 4404160830	CJTO. ENTRADA EUROPE D. 75 PARA 1200 - 1400
3	4404170102	MANOMETRO 3 ATM.	11	* 4404160831	CJTO. ENTRADA EUROPE D.90 PARA 1200 - 1400 -
4	4404170105	CUERPO PANEL MANOMETROS	11	* 4404160814	CJTO. ENTRADA EUROPE D.110 PARA 1400 - 1600
5	4404260211	TORNILLERIA TAPA FILTRO	11	* 4404160815	CJTO. ENTRADA EUROPE D.125 PARA 1600
6	4404260210	FIJACION MANOMETRO	11	* 4404160832	CJTO. ENTRADA EUROPE D.90 PARA 1800
6	4404160806	PURGA AIRE 3/4"	11	* 4404160833	CJTO. ENTRADA EUROPE D.110 PARA 1800 - 2000
7	4404160807	VALVULA BOLA 3/4"	11	* 4404160834	CJTO. ENTRADA EUROPE D.125 PARA 1800 - 2000
8	4404160808	PURGA AGUA 3/4"	11	* 4404160816	CJTO. ENTRADA EUROPE D.140 PARA 1800 - 2000
9	4404160809	ARO CUELLO 20 TORNILLOS	11	* 4404160817	CJTO. ENTRADA EUROPE D.160 PARA 2000
10	4404160810	TAPA VACIADO ARENA	12	* 4404300916	BRAZO COLECTOR 1" 225 M "

CODIGO **20068 1", 20069 1", 20070 1", 20071 1", 20072 1", 21497 1", 21498 1", 21499 1", 21500 1", 21501 1", 21502 1", 21503 1", 21504 1", 21505 1", 21506 1", 21507 1", 21508 1", 21509 1", 21510 1"**

DESCRIPCION: FILTRO EUROPA (MODELO ANTIGUO - BRAZOS 1") 1M. 2,5 KG. D.1050-1200-140

11	* 4404160811	CJTO. ENTRADA EUROPE D.63 PARA 1050	12	* 4404300915	BRAZO COLECTOR 1" 175 M "
11	* 4404160812	CJTO. ENTRADA EUROPE D.75 PARA 1050	12	* 4404300917	BRAZO COLECTOR 1" 110 M "
13	4404170104	RACORD PANEL + TUBO	17	* 4404160059	CJTO. DIFUSOR D. 160 - 2000
14	4404170103	PURGA PANEL MANOMETROS	18	4404160847	TAPA FILTRO D. 220 NEGRA
15	* 4404160835	CJTO. SALIDA EUROPE D.63 PARA 1050	19	4404260106	JUNTA ARO FIJACION VALVULA
15	* 4404160836	CJTO. SALIDA EUROPE D.75 PARA 1050	20	4404160849	ARO FIJACION TAPA
15	* 4404160837	CJTO. SALIDA EUROPE D.90 PARA 1050	21	4404160850	TORNILLERIA FIJACION TAPA M8
15	* 4404160838	CJTO. SALIDA EUROPE D.75 PARA 1200 - 1400	22	4404040113	TAPON PURGA Y JUNTA
15	* 4404160839	CJTO. SALIDA EUROPE D.90 PARA 1200 - 1400 - 160	23	* 4404301303	CJTO. BRAZOS COLECTOR 1" D. 1050 EUROP "
15	* 4404160840	CJTO. SALIDA EUROPE D.110 PARA 1400 - 1600	23	* 4404200102	CJTO. BRAZOS COLECTOR 1" D. 1200 EUROP "
15	* 4404160841	CJTO. SALIDA EUROPE D.125 PARA 1600	23	* 4404200103	CJTO. BRAZOS COLECTOR 1" D. 1400 EUROP "
15	* 4404160842	CJTO. SALIDA EUROPE D.90 PARA 1800	23	* 4404210308	CJTO. BRAZOS COLECTOR 1" D. 1600 EUROP "
15	* 4404160843	CJTO. SALIDA EUROPE D.110 PARA 1800 - 2000	23	* 4404230106	CJTO. BRAZOS COLECTOR 1" D. 1800 EUROP "
15	* 4404160844	CJTO. SALIDA EUROPE D.125 PARA 1800 - 2000	23	* 4404230108	CJTO. BRAZOS COLECTOR 1" D. 2000 EUROP "
15	* 4404160845	CJTO. SALIDA EUROPE D.140 PARA 1800 - 2000	24	* 4404260418	MANGUITO ENLACE UNION 1"
15	* 4404160846	CJTO. SALIDA EUROPE D.160 PARA 2000	25	* 21512R0423	SOPORTE DIFUSOR D.90 PARA 1400
16	* 4404260419	BRAZO COLECTOR 1" 100 M "	25	* 21513R0423	SOPORTE DIFUSOR D.110 PARA 1400
17	* 4404160041	CJTO. DIFUSOR D. 63 - 1050	25	* 21500R0423	SOPORTE DIFUSOR D.90 PARA 1600
17	* 4404160042	CJTO. DIFUSOR D. 75 - 1050	25	* 21515R0423	CJTO. SOPORTE DIFUSOR D.1600-110
17	* 4404160043	CJTO. DIFUSOR D. 90 - 1050	25	* 21502R0423	SOPORTE DIFUSOR D.125 PARA 1600
17	* 4404160044	CJTO. DIFUSOR D. 75 - 1200	25	* 21503R0423	SOPORTE DIFUSOR D.90 PARA 1800
17	* 4404160045	CJTO. DIFUSOR D. 90 - 1200	25	* 21504R0423	SOPORTE DIFUSOR D.110 PARA 1800
17	* 4404160046	CJTO. DIFUSOR D. 75 - 1400	25	* 21519R0423	SOPORTE DIFUSOR D.125 PARA 1800
17	* 4404160047	CJTO. DIFUSOR D. 90 - 1400	25	* 21506R0423	SOPORTE DIFUSOR D.140 PARA 1800
17	* 4404160048	CJTO. DIFUSOR D. 110 - 1400	25	* 21507R0423	SOPORTE DIFUSOR D.110 PARA 2000
17	* 4404160049	CJTO. DIFUSOR D. 90 - 1600	25	* 21508R0423	SOPORTE DIFUSOR D.125 PARA 2000
17	* 4404160050	CJTO. DIFUSOR D. 110 - 1600	25	* 21523R0423	SOPORTE DIFUSOR D.140 PARA 2000
17	* 4404160051	CJTO. DIFUSOR D. 125 - 1600	25	* 21510R0423	SOPORTE DIFUSOR D.160 PARA 2000
17	* 4404160052	CJTO. DIFUSOR D. 90 - 1800	26	* 20070R0150	PIE FILTRO 1050 EUROPE
17	* 4404160053	CJTO. DIFUSOR D. 110 - 1800	26	* 20068R0150	PIE FILTRO 1200 EUROPE
17	* 4404160054	CJTO. DIFUSOR D. 125 - 1800	26	* 21511R0150	PIE D. 1400
17	* 4404160055	CJTO. DIFUSOR D. 140 - 1800	26	* 21514R0150	PIE FILTRO 1600 EUROPE
17	* 4404160056	CJTO. DIFUSOR D. 110 - 2000	26	* 21517R0150	PIE FILTRO 1800 EUROPE
17	* 4404160057	CJTO. DIFUSOR D. 125 - 2000	26	* 21521R0150	PIE FILTRO 2000 EUROPE
17	* 4404160058	CJTO. DIFUSOR D. 140 - 2000			

CODIGO 20068 1", 20069 1", 20070 1", 20071 1", 20072 1", 21497 1", 21498 1", 21499 1", 21500 1", 21501 1", 21502 1", 21503 1", 21504 1", 21505 1", 21506 1", 21507 1", 21508 1", 21509 1", 21510 1"

DESCRIPCION: FILTRO EUROPA (MODELO ANTIGUO - BRAZOS 1") 1M. 2,5 KG. D.1050-1200-140

OBSERVACIONES

POS	CODIGO	OBSERVACIONES
11	4404160811	PARA: 20070 1"
11	4404160812	PARA: 20071 1"
11	4404160813	PARA: 20072 1"
11	4404160830	PARA: 20068 1", 21497 1"
11	4404160831	PARA: 20069 1", 21498 1", 21500 1"
11	4404160814	PARA: 21499 1", 21500 1"
11	4404160815	PARA: 21502 1"
11	4404160832	PARA: 21503 1"
11	4404160833	PARA: 21504 1", 21507 1"
11	4404160834	PARA: 21505 1", 21508 1"
11	4404160816	PARA: 21506 1", 21509 1"
11	4404160817	PARA: 21510 1"
12	4404300916	PARA: 20068 1" [7UT], 20069 1" [7UT], 20070 1" [2UT], 20071 1" [2UT], 20072 1" [2UT], 21497 1" [7UT], 21498 1" [7UT], 21499 1" [7UT], 21500 1" [4UT], 21501 1" [4UT], 21502 1" [4UT], 21503 1" [23UT], 21504 1" [23UT], 21505 1" [23UT], 21506 1" [23UT], 21507 1" [18UT], 21508 1" [18UT], 21509 1" [18UT], 21510 1" [18UT]
12	4404300915	PARA: 20068 1" [8UT], 20069 1" [8UT], 20070 1" [13UT], 20071 1" [13UT], 20072 1" [13UT], 21497 1" [18UT], 21498 1" [18UT], 21499 1" [18UT], 21500 1" [25UT], 21501 1" [25UT], 21502 1" [25UT], 21503 1" [10UT], 21504 1" [10UT], 21505 1" [10UT], 21506 1" [10UT], 21507 1" [15UT], 21508 1" [15UT], 21509 1" [15UT], 21510 1" [15UT]
12	4404300917	PARA: 21497 1" [2UT], 21498 1" [2UT], 21499 1" [2UT], 21500 1" [2UT], 21501 1" [2UT], 21502 1" [2UT], 21503 1" [2UT], 21504 1" [2UT], 21505 1" [2UT], 21506 1" [2UT], 21507 1" [2UT], 21508 1" [2UT], 21509 1" [2UT], 21510 1" [2UT]
15	4404160835	PARA: 20070 1"
15	4404160836	PARA: 20071 1"
15	4404160837	PARA: 20072 1"
15	4404160838	PARA: 20068 1", 21497 1"
15	4404160839	PARA: 20069 1", 21498 1", 21500 1"
15	4404160840	PARA: 21499 1", 21500 1"
15	4404160841	PARA: 21502 1"
15	4404160842	PARA: 21503 1"
15	4404160843	PARA: 21504 1", 21507 1"
15	4404160844	PARA: 21505 1", 21508 1"
15	4404160845	PARA: 21506 1", 21509 1"
15	4404160846	PARA: 21510 1"
16	4404260419	PARA: 20068 1" [6UT], 20069 1" [6UT], 20070 1" [5UT], 20071 1" [5UT], 20072 1" [5UT], 21497 1" [4UT], 21498 1" [4UT], 21499 1" [4UT], 21500 1" [7UT], 21501 1" [7UT], 21502 1" [7UT], 21503 1" [9UT], 21504 1" [9UT], 21505 1" [9UT], 21506 1" [9UT], 21507 1" [16UT], 21508 1" [16UT], 21509 1" [16UT], 21510 1" [16UT]
17	4404160041	PARA: 20070 1"
17	4404160042	PARA: 20071 1"
17	4404160043	PARA: 20072 1"
17	4404160044	PARA: 20068 1"
17	4404160045	PARA: 20069 1"
17	4404160046	PARA: 21497 1"
17	4404160047	PARA: 21498 1"
17	4404160048	PARA: 21499 1"
17	4404160049	PARA: 21500 1"

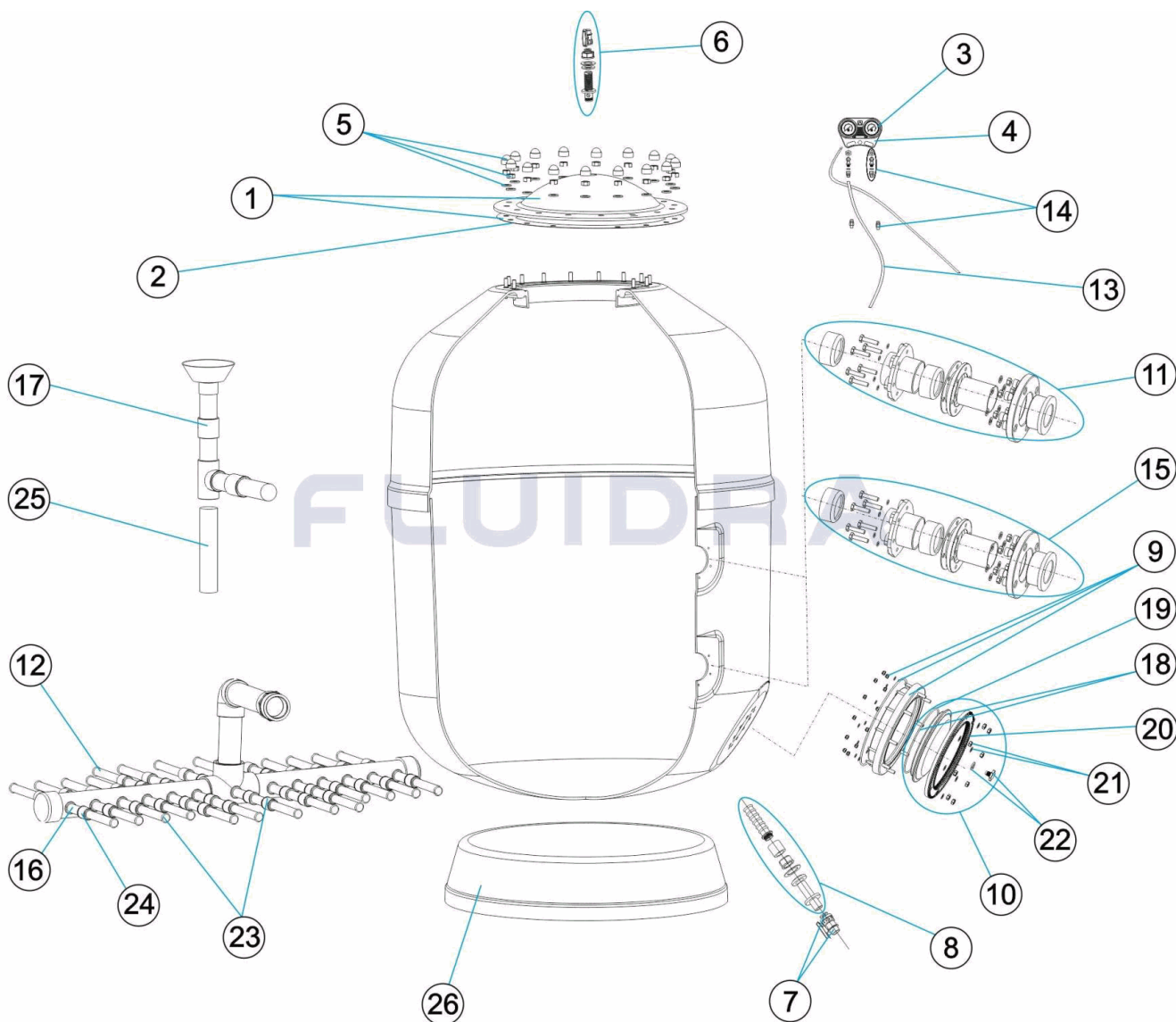
CODIGO **20068 1", 20069 1", 20070 1", 20071 1", 20072 1", 21497 1", 21498 1", 21499 1", 21500 1", 21501 1", 21502 1", 21503 1", 21504 1", 21505 1", 21506 1", 21507 1", 21508 1", 21509 1", 21510 1"**

DESCRIPCION: FILTRO EUROPA (MODELO ANTIGUO - BRAZOS 1") 1M. 2,5 KG. D.1050-1200-140

17	4404160050	PARA: 21501 1"
17	4404160051	PARA: 21502 1"
17	4404160052	PARA: 21503 1"
17	4404160053	PARA: 21504 1"
17	4404160054	PARA: 21505 1"
17	4404160055	PARA: 21506 1"
17	4404160056	PARA: 21507 1"
17	4404160057	PARA: 21508 1"
17	4404160058	PARA: 21509 1"
17	4404160059	PARA: 21510 1"
23	4404301303	PARA: 20070 1", 20071 1", 20072 1"
23	4404200102	PARA: 20068 1", 20069 1"
23	4404200103	PARA: 21497 1", 21498 1", 21499 1"
23	4404210308	PARA: 21500 1", 21501 1", 21502 1"
23	4404230106	PARA: 21503 1", 21504 1", 21505 1", 21506 1"
23	4404230108	PARA: 21507 1", 21508 1", 21509 1", 21510 1"
24	4404260418	PARA: 20068 1" [6UT], 20069 1" [6UT], 20070 1" [5UT], 20071 1" [5UT], 20072 1" [5UT], 21497 1" [4UT], 21498 1" [4UT], 21499 1" [4UT], 21500 1" [7UT], 21501 1" [7UT], 21502 1" [7UT], 21503 1" [9UT], 21504 1" [9UT], 21505 1" [9UT], 21506 1" [9UT], 21507 1" [16UT], 21508 1" [16UT], 21509 1" [16UT], 21510 1" [16UT]
25	21512R0423	PARA: 21498 1"
25	21513R0423	PARA: 21499 1"
25	21500R0423	PARA: 21500 1"
25	21515R0423	PARA: 21501 1"
25	21502R0423	PARA: 21502 1"
25	21503R0423	PARA: 21503 1"
25	21504R0423	PARA: 21504 1"
25	21519R0423	PARA: 21505 1"
25	21506R0423	PARA: 21506 1"
25	21507R0423	PARA: 21507 1"
25	21508R0423	PARA: 21508 1"
25	21523R0423	PARA: 21509 1"
25	21510R0423	PARA: 21510 1"
26	20070R0150	PARA: 20070 1", 20071 1", 20072 1"
26	20068R0150	PARA: 20068 1", 20069 1"
26	21511R0150	PARA: 21497 1", 21498 1", 21499 1"
26	21514R0150	PARA: 21500 1", 21501 1", 21502 1"
26	21517R0150	PARA: 21503 1", 21504 1", 21505 1", 21506 1"
26	21521R0150	PARA: 21508 1", 21509 1"

CODE 20068 1", 20069 1", 20070 1", 20071 1", 20072 1", 21497 1", 21498 1", 21499 1", 21500 1", 21501 1", 21502 1", 21503 1", 21504 1", 21505 1", 21506 1", 21507 1", 21508 1", 21509 1", 21510 1"

DESCRIPTION: FILTRE EUROPA (ANCIEN MODÈLE - BRAS DE RÉPARTITEUR 1") 1M. 2,5 KG. D.



FRANCAIS

POS	CODE	DESCRIPTION	POS	CODE	DESCRIPTION
1	4404160102	COUVERCLE FILTRE + JOINT	11	* 4404160813	ENSEMBLE ENTREE 90 1050
2	4404160101	JOINT TORIQUE COUVERCLE	11	* 4404160830	ENSEMBLE ENTREE 75 1200-1400
3	4404170102	MANOMETRE 3 BARS	11	* 4404160831	ENSEMBLE ENTREE 90 1200-1400-1600
4	4404170105	CORPS FACADE MANOMETRES	11	* 4404160814	ENSEMBLE ENTREE 110 1400-1600
5	4404260211	VISSERIE COUVERCLE DE FILTRE	11	* 4404160815	ENSEMBLE ENTREE 125 1600
6	4404260210	FIXATION MANOMETRE	11	* 4404160832	ENSEMBLE ENTREE 90 1800
6	4404160806	PURGE D'AIR 3/4"	11	* 4404160833	ENSEMBLE ENTREE 110 1800-2000
7	4404160807	VANNE A BOISSEAU SPHERIQUE 3/4"	11	* 4404160834	ENSEMBLE ENTREE 125 1800-2000
8	4404160808	PURGE D'EAU 3/4"	11	* 4404160816	ENSEMBLE ENTREE 140 1800-2000
9	4404160809	BRIDE GORGE 20 VIS	11	* 4404160817	ENSEMBLE ENTREE 160 2000
10	4404160810	BOUCHON PURGE SABLE	12	* 4404300916	BRAS DE REPARTITEUR 1" 225 M "

CODE 20068 1", 20069 1", 20070 1", 20071 1", 20072 1", 21497 1", 21498 1", 21499 1", 21500 1", 21501 1", 21502 1", 21503 1", 21504 1", 21505 1", 21506 1", 21507 1", 21508 1", 21509 1", 21510 1"

DESCRIPTION: FILTRE EUROPA (ANCIEN MODÈLE - BRAS DE RÉPARTITEUR 1") 1M. 2,5 KG. D.

11	* 4404160811	ENSEMBLE ENTREE 63 1050	12	* 4404300915	BRAS DE REPARTITEUR 1" 175 M "
11	* 4404160812	ENSEMBLE ENTREE 75 1050	12	* 4404300917	BRAS DE REPARTITEUR 1" 110 M "
13	4404170104	RACCORD FACADE + TUBE	17	* 4404160059	ENSEMBLE DIFFUSEUR D. 160 - 2000
14	4404170103	PURGE D'AIR	18	4404160847	COUVERCLE FILTRE D. 220 NOIR
15	* 4404160835	ENSEMBLE SORTIE EUROPE D.63 POUR 1050	19	4404260106	JOINT BRIDE FIXATION VANNE TOP
15	* 4404160836	ENSEMBLE SORTIE EUROPE D.75 POUR 1050	20	4404160849	BRIDE DE FIXATION COUVERCLE
15	* 4404160837	ENSEMBLE SORTIE EUROPE D.90 POUR 1050	21	4404160850	VISSERIE FIXATION COUVERCLE M8
15	* 4404160838	ENSEMBLE SORTIE EUROPE D.75 POUR 1200-1400	22	4404040113	BOUCHON PURGE ET JOINT
15	* 4404160839	ENSEMBLE SORTIE EUROPE D.90 POUR 1200-1400	23	* 4404301303	ENSEMBLE BRAS DE REPARTITEUR 1" D. 1050 EU
15	* 4404160840	ENSEMBLE SORTIE EUROPE D.110 PARA 1400-1600	23	* 4404200102	ENSEMBLE BRAS DE REPARTITEUR 1" D. 1200 EU
15	* 4404160841	ENSEMBLE SORTIE EUROPE D.125 POUR 1600	23	* 4404200103	ENSEMBLE BRAS DE REPARTITEUR 1" D. 1400 EU
15	* 4404160842	ENSEMBLE SORTIE EUROPE D.90 POUR 1800	23	* 4404210308	ENSEMBLE BRAS DE REPARTITEUR 1" D. 1600 EU
15	* 4404160843	ENSEMBLE SORTIE EUROPE D.110 POUR 1800-2000	23	* 4404230106	ENSEMBLE BRAS DE REPARTITEUR 1" D. 1800 EU
15	* 4404160844	ENSEMBLE SORTIE EUROPE D.125 POUR 1800-2000	23	* 4404230108	ENSEMBLE BRAS DE REPARTITEUR 1" D. 2000 EU
15	* 4404160845	ENSEMBLE SORTIE EUROPE D.140 POUR 1800-2000	24	* 4404260418	MANCHON UNION 1"
15	* 4404160846	ENSEMBLE SORTIE EUROPE D.160 POUR 2000	25	* 21512R0423	TUBE SUPPORT DIFFUSEUR D.90 POUR 1400
16	* 4404260419	BRAS DE REPARTITEUR 1" 100M "	25	* 21513R0423	TUBE SUPPORT DIFFUSEUR D.110 POUR 1400
17	* 4404160041	ENSEMBLE DIFFUSEUR D. 63 - 1050	25	* 21500R0423	TUBE SUPPORT DIFFUSEUR D.90 POUR 1600
17	* 4404160042	ENSEMBLE DIFFUSEUR D. 75 - 1050	25	* 21515R0423	TUBE SUPPORT DIFFUSEUR D.110 POUR 1600
17	* 4404160043	ENSEMBLE DIFFUSEUR D. 90 - 1050	25	* 21502R0423	TUBE SUPPORT DIFFUSEUR D.125 POUR 1600
17	* 4404160044	ENSEMBLE DIFFUSEUR D. 75 - 1200	25	* 21503R0423	TUBE SUPPORT DIFFUSEUR D.90 POUR 1800
17	* 4404160045	ENSEMBLE DIFFUSEUR D. 90 - 1200	25	* 21504R0423	TUBE SUPPORT DIFFUSEUR D.110 POUR 1800
17	* 4404160046	ENSEMBLE DIFFUSEUR D. 75 - 1400	25	* 21519R0423	TUBE SUPPORT DIFFUSEUR D.125 POUR 1800
17	* 4404160047	ENSEMBLE DIFFUSEUR D. 90 - 1400	25	* 21506R0423	TUBE SUPPORT DIFFUSEUR D.140 POUR 1800
17	* 4404160048	ENSEMBLE DIFFUSEUR D. 110 - 1400	25	* 21507R0423	TUBE SUPPORT DIFFUSEUR D.110 POUR 2000
17	* 4404160049	ENSEMBLE DIFFUSEUR D. 90 - 1600	25	* 21508R0423	TUBE SUPPORT DIFFUSEUR D.125 POUR 2000
17	* 4404160050	ENSEMBLE DIFFUSEUR D. 110 - 1600	25	* 21523R0423	TUBE SUPPORT DIFFUSEUR D.140 POUR 2000
17	* 4404160051	ENSEMBLE DIFFUSEUR D. 125 - 1600	25	* 21510R0423	TUBE SUPPORT DIFFUSEUR D.160 POUR 2000
17	* 4404160052	ENSEMBLE DIFFUSEUR D. 90 - 1800	26	* 20070R0150	SOCLE FILTRE 1050 EUROPE
17	* 4404160053	ENSEMBLE DIFFUSEUR D. 110 - 1800	26	* 20068R0150	SOCLE FILTRE 1200 EUROPE
17	* 4404160054	ENSEMBLE DIFFUSEUR D. 125 - 1800	26	* 21511R0150	SOCLE FILTRE 1400 EUROPE
17	* 4404160055	ENSEMBLE DIFFUSEUR D. 140 - 1800	26	* 21514R0150	SOCLE FILTRE 1600 EUROPE
17	* 4404160056	ENSEMBLE DIFFUSEUR D. 110 - 2000	26	* 21517R0150	SOCLE FILTRE 1800 EUROPE
17	* 4404160057	ENSEMBLE DIFFUSEUR D. 125 - 2000	26	* 21521R0150	SOCLE FILTRE 2000 EUROPE
17	* 4404160058	ENSEMBLE DIFFUSEUR D. 140 - 2000			

CODE **20068 1", 20069 1", 20070 1", 20071 1", 20072 1", 21497 1", 21498 1", 21499 1", 21500 1", 21501 1", 21502 1", 21503 1", 21504 1", 21505 1", 21506 1", 21507 1", 21508 1", 21509 1", 21510 1"**

DESCRIPTION: FILTRE EUROPA (ANCIEN MODÈLE - BRAS DE RÉPARTITEUR 1") 1M. 2,5 KG. D.

OBSERVATIONS

POS	CODE	OBSERVATIONS
11	4404160811	POUR: 20070 1"
11	4404160812	POUR: 20071 1"
11	4404160813	POUR: 20072 1"
11	4404160830	POUR: 20068 1", 21497 1"
11	4404160831	POUR: 20069 1", 21498 1", 21500 1"
11	4404160814	POUR: 21499 1", 21500 1"
11	4404160815	POUR: 21502 1"
11	4404160832	POUR: 21503 1"
11	4404160833	POUR: 21504 1", 21507 1"
11	4404160834	POUR: 21505 1", 21508 1"
11	4404160816	POUR: 21506 1", 21509 1"
11	4404160817	POUR: 21510 1"
12	4404300916	POUR: 20068 1" [7UT], 20069 1" [7UT], 20070 1" [2UT], 20071 1" [2UT], 20072 1" [2UT], 21497 1" [7UT], 21498 1" [7UT], 21499 1" [7UT], 21500 1" [4UT], 21501 1" [4UT], 21502 1" [4UT], 21503 1" [23UT], 21504 1" [23UT], 21505 1" [23UT], 21506 1" [23UT], 21507 1" [18UT], 21508 1" [18UT], 21509 1" [18UT], 21510 1" [18UT]
12	4404300915	POUR: 20068 1" [8UT], 20069 1" [8UT], 20070 1" [13UT], 20071 1" [13UT], 20072 1" [13UT], 21497 1" [18UT], 21498 1" [18UT], 21499 1" [18UT], 21500 1" [25UT], 21501 1" [25UT], 21502 1" [25UT], 21503 1" [10UT], 21504 1" [10UT], 21505 1" [10UT], 21506 1" [10UT], 21507 1" [15UT], 21508 1" [15UT], 21509 1" [15UT], 21510 1" [15UT]
12	4404300917	POUR: 21497 1" [2UT], 21498 1" [2UT], 21499 1" [2UT], 21500 1" [2UT], 21501 1" [2UT], 21502 1" [2UT], 21503 1" [2UT], 21504 1" [2UT], 21505 1" [2UT], 21506 1" [2UT], 21507 1" [2UT], 21508 1" [2UT], 21509 1" [2UT], 21510 1" [2UT]
15	4404160835	POUR: 20070 1"
15	4404160836	POUR: 20071 1"
15	4404160837	POUR: 20072 1"
15	4404160838	POUR: 20068 1", 21497 1"
15	4404160839	POUR: 20069 1", 21498 1", 21500 1"
15	4404160840	POUR: 21499 1", 21500 1"
15	4404160841	POUR: 21502 1"
15	4404160842	POUR: 21503 1"
15	4404160843	POUR: 21504 1", 21507 1"
15	4404160844	POUR: 21505 1", 21508 1"
15	4404160845	POUR: 21506 1", 21509 1"
15	4404160846	POUR: 21510 1"
16	4404260419	POUR: 20068 1" [6UT], 20069 1" [6UT], 20070 1" [5UT], 20071 1" [5UT], 20072 1" [5UT], 21497 1" [4UT], 21498 1" [4UT], 21499 1" [4UT], 21500 1" [7UT], 21501 1" [7UT], 21502 1" [7UT], 21503 1" [9UT], 21504 1" [9UT], 21505 1" [9UT], 21506 1" [9UT], 21507 1" [16UT], 21508 1" [16UT], 21509 1" [16UT], 21510 1" [16UT]
17	4404160041	POUR: 20070 1"
17	4404160042	POUR: 20071 1"
17	4404160043	POUR: 20072 1"
17	4404160044	POUR: 20068 1"
17	4404160045	POUR: 20069 1"
17	4404160046	POUR: 21497 1"
17	4404160047	POUR: 21498 1"
17	4404160048	POUR: 21499 1"
17	4404160049	POUR: 21500 1"

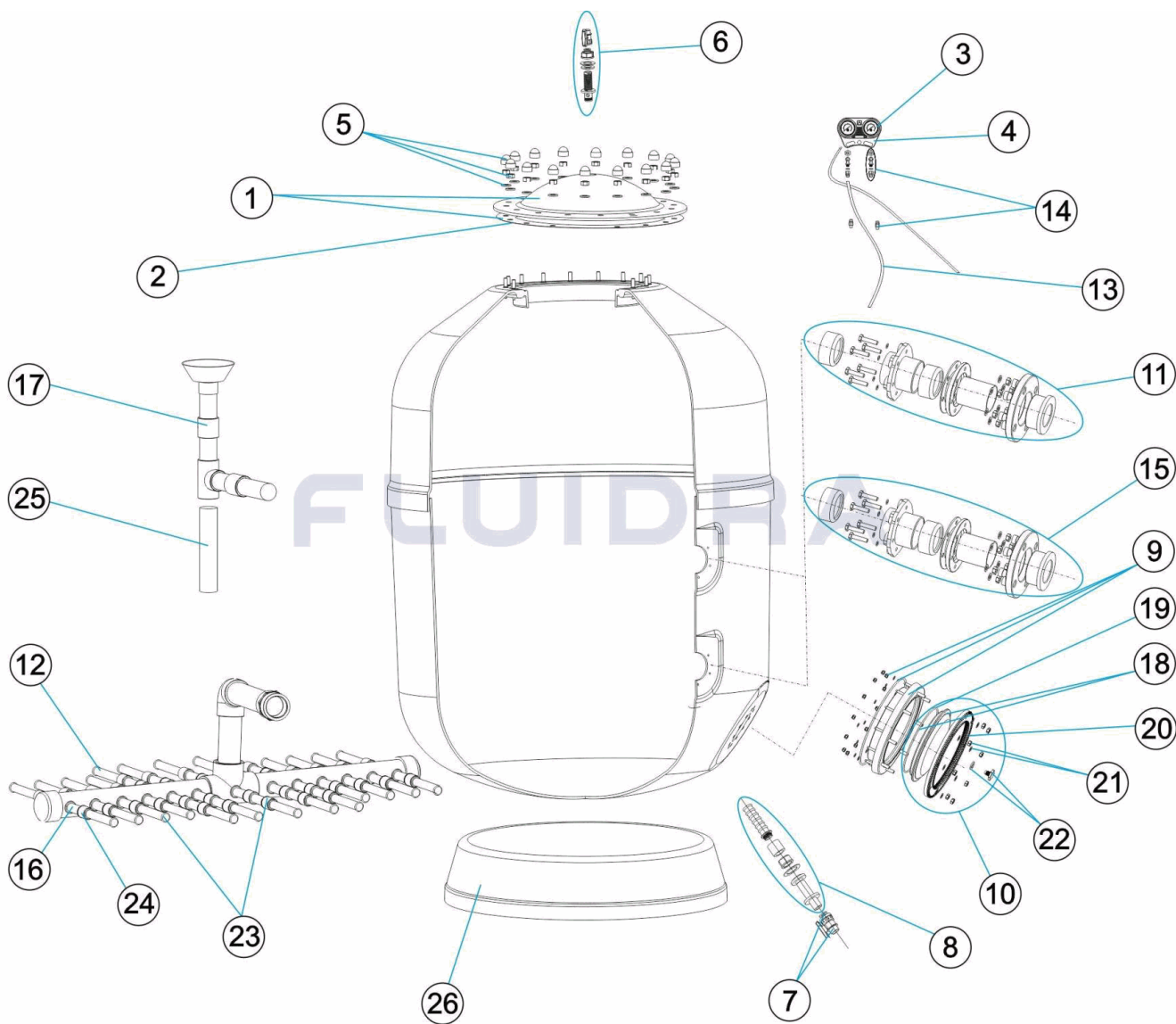
CODE **20068 1", 20069 1", 20070 1", 20071 1", 20072 1", 21497 1", 21498 1", 21499 1", 21500 1", 21501 1", 21502 1", 21503 1", 21504 1", 21505 1", 21506 1", 21507 1", 21508 1", 21509 1", 21510 1"**

DESCRIPTION: FILTRE EUROPA (ANCIEN MODÈLE - BRAS DE RÉPARTITEUR 1") 1M. 2,5 KG. D.

17	4404160050	POUR: 21501 1"
17	4404160051	POUR: 21502 1"
17	4404160052	POUR: 21503 1"
17	4404160053	POUR: 21504 1"
17	4404160054	POUR: 21505 1"
17	4404160055	POUR: 21506 1"
17	4404160056	POUR: 21507 1"
17	4404160057	POUR: 21508 1"
17	4404160058	POUR: 21509 1"
17	4404160059	POUR: 21510 1"
23	4404301303	POUR: 20070 1", 20071 1", 20072 1"
23	4404200102	POUR: 20068 1", 20069 1"
23	4404200103	POUR: 21497 1", 21498 1", 21499 1"
23	4404210308	POUR: 21500 1", 21501 1", 21502 1"
23	4404230106	POUR: 21503 1", 21504 1", 21505 1", 21506 1"
23	4404230108	POUR: 21507 1", 21508 1", 21509 1", 21510 1"
24	4404260418	POUR: 20068 1" [6UT], 20069 1" [6UT], 20070 1" [5UT], 20071 1" [5UT], 20072 1" [5UT], 21497 1" [4UT], 21498 1" [4UT], 21499 1" [4UT], 21500 1" [7UT], 21501 1" [7UT], 21502 1" [7UT], 21503 1" [9UT], 21504 1" [9UT], 21505 1" [9UT], 21506 1" [9UT], 21507 1" [16UT], 21508 1" [16UT], 21509 1" [16UT], 21510 1" [16UT]
25	21512R0423	POUR: 21498 1"
25	21513R0423	POUR: 21499 1"
25	21500R0423	POUR: 21500 1"
25	21515R0423	POUR: 21501 1"
25	21502R0423	POUR: 21502 1"
25	21503R0423	POUR: 21503 1"
25	21504R0423	POUR: 21504 1"
25	21519R0423	POUR: 21505 1"
25	21506R0423	POUR: 21506 1"
25	21507R0423	POUR: 21507 1"
25	21508R0423	POUR: 21508 1"
25	21523R0423	POUR: 21509 1"
25	21510R0423	POUR: 21510 1"
26	20070R0150	POUR: 20070 1", 20071 1", 20072 1"
26	20068R0150	POUR: 20068 1", 20069 1"
26	21511R0150	POUR: 21497 1", 21498 1", 21499 1"
26	21514R0150	POUR: 21500 1", 21501 1", 21502 1"
26	21517R0150	POUR: 21503 1", 21504 1", 21505 1", 21506 1"
26	21521R0150	POUR: 21508 1", 21509 1"

CODE 20068 1", 20069 1", 20070 1", 20071 1", 20072 1", 21497 1", 21498 1", 21499 1", 21500 1", 21501 1", 21502 1", 21503 1", 21504 1", 21505 1", 21506 1", 21507 1", 21508 1", 21509 1", 21510 1"

DESCRIPTION: EUROPA FILTER (PREVIOUS MODEL - 1" ARMS) 1M. 2,5 KG. D.1050-1200-1400-1



ENGLISH

POS	CODE	DESCRIPTION	POS	CODE	DESCRIPTION
1	4404160102	FILTER LID + GASKET	11	* 4404160813	INLET ASSEMBLY 90 1050
2	4404160101	LID 'O' RING	11	* 4404160830	INLET ASSEMBLY 75 1200-1400
3	4404170102	PRESSURE GAUGE 3 BAR	11	* 4404160831	INLET ASSEMBLY 90 1200-1400-1600
4	4404170105	PRESSURE GAUGE PANEL BODY	11	* 4404160814	INLET ASSEMBLY 110 1400-1600
5	4404260211	FILTER LID BOLTS	11	* 4404160815	INLET ASSEMBLY 125 1600
6	4404260210	PRESSURE GAUGE ANCHOR	11	* 4404160832	INLET ASSEMBLY 90 1800
6	4404160806	AIR PURGE 3/4"	11	* 4404160833	INLET ASSEMBLY 110 1800-2000
7	4404160807	BALL VALVE 3/4"	11	* 4404160834	INLET ASSEMBLY 125 1800-2000
8	4404160808	WATER PURGE 3/4"	11	* 4404160816	INLET ASSEMBLY 140 1800-2000
9	4404160809	20-SCREW NECK RING	11	* 4404160817	INLET ASSEMBLY 160 2000
10	4404160810	SAND DRAINAGE COVER	12	* 4404300916	MANIFOLD ARM 1" 225 M "

CODE **20068 1", 20069 1", 20070 1", 20071 1", 20072 1", 21497 1", 21498 1", 21499 1", 21500 1", 21501 1", 21502 1", 21503 1", 21504 1", 21505 1", 21506 1", 21507 1", 21508 1", 21509 1", 21510 1"**

DESCRIPTION: **EUROPA FILTER (PREVIOUS MODEL - 1" ARMS) 1M. 2,5 KG. D.1050-1200-1400-1**

11	* 4404160811	INLET ASSEMBLY 63 1050	12	* 4404300915	MANIFOLD ARM 1" 175 M "
11	* 4404160812	INLETASSEMBLY 75 1050	12	* 4404300917	MANIFOLD ARM 1" 110 M "
13	4404170104	PRESSURE FITTINGS + TUBE	17	* 4404160059	DIFFUSER ASSEMBLY D. 160 - 2000
14	4404170103	AIR BLEED ASSEMBLY	18	4404160847	FILTER LID D. 220 BLACK
15	* 4404160835	OUTLET ASSEMBLY EUROPE D.63 FOR 1050	19	4404260106	VALVE TOP RING FIXING GASKET
15	* 4404160836	OUTLET ASSEMBLY EUROPE D.75 FOR 1050	20	4404160849	LID FIXING RING
15	* 4404160837	OUTLET ASSEMBLY EUROPE D.90 FOR 1050	21	4404160850	LID ANCHOR BOLTS M8
15	* 4404160838	OUTLET ASSEMBLY EUROPE D.75 FOR 1200 - 1400	22	4404040113	DRAIN PLUG AND GASKET
15	* 4404160839	OUTLET ASSEMBLY EUROPE D.90 FOR 1200 - 1400	23	* 4404301303	MANIFOLD ARM ASSEMBLY 1" D. 1050 EUROP "
15	* 4404160840	OUTLET ASSEMBLY EUROPE D.110 FOR 1400 - 1600	23	* 4404200102	MANIFOLD ARM ASSEMBLY 1" D. 1200 EUROP "
15	* 4404160841	OUTLET ASSEMBLY EUROPE D.125 FOR 1600	23	* 4404200103	MANIFOLD ARM ASSEMBLY 1" D. 1400 EUROP "
15	* 4404160842	OUTLET ASSEMBLY EUROPE D.90 FOR 1800	23	* 4404210308	MANIFOLD ARM ASSEMBLY 1" D. 1600 EUROP "
15	* 4404160843	OUTLET ASSEMBLY EUROPE D.110 FOR 1800 - 2000	23	* 4404230106	MANIFOLD ARM ASSEMBLY 1" D. 1800 EUROP "
15	* 4404160844	OUTLET ASSEMBLY EUROPE D.125 FOR 1800 - 2000	23	* 4404230108	MANIFOLD ARM ASSEMBLY 1" D. 2000 EUROP "
15	* 4404160845	OUTLET ASSEMBLY EUROPE D.140 FOR 1800 - 2000	24	* 4404260418	UNION 1"
15	* 4404160846	OUTLET ASSEMBLY EUROPE D.160 FOR 2000	25	* 21512R0423	DIFFUSOR SUPPORT TUBE D 90 FOR 1400
16	* 4404260419	MANIFOLD ARM 1" 100 M "	25	* 21513R0423	DIFFUSOR SUPPORT TUBE D 110 FOR 1400
17	* 4404160041	DIFFUSER ASSEMBLY D. 63 - 1050	25	* 21500R0423	DIFFUSOR SUPPORT TUBE D 90 FOR 1600
17	* 4404160042	DIFFUSER ASSEMBLY D. 75 - 1050	25	* 21515R0423	DIFFUSOR SUPPORT TUBE D 110 FOR 1600
17	* 4404160043	DIFFUSER ASSEMBLY D. 90 - 1050	25	* 21502R0423	DIFFUSOR SUPPORT TUBE D 125 FOR 1600
17	* 4404160044	DIFFUSER ASSEMBLY D. 75 - 1200	25	* 21503R0423	DIFFUSOR SUPPORT TUBE D 90 FOR 1800
17	* 4404160045	DIFFUSER ASSEMBLY D. 90 - 1200	25	* 21504R0423	DIFFUSOR SUPPORT TUBE D 110 FOR 1800
17	* 4404160046	DIFFUSER ASSEMBLY D. 75 - 1400	25	* 21519R0423	DIFFUSOR SUPPORT TUBE D 125 FOR 1800
17	* 4404160047	DIFFUSER ASSEMBLY D. 90 - 1400	25	* 21506R0423	DIFFUSOR SUPPORT TUBE D 140 FOR 1800
17	* 4404160048	DIFFUSER ASSEMBLY D. 110 - 1400	25	* 21507R0423	DIFFUSOR SUPPORT TUBE D 110 FOR 2000
17	* 4404160049	DIFFUSER ASSEMBLY D. 90 - 1600	25	* 21508R0423	DIFFUSOR SUPPORT TUBE D 125 FOR 1800
17	* 4404160050	DIFFUSER ASSEMBLY D. 110 - 1600	25	* 21523R0423	DIFFUSOR SUPPORT TUBE D 140 FOR 2000
17	* 4404160051	DIFFUSER ASSEMBLY D. 125 - 1600	25	* 21510R0423	DIFFUSOR SUPPORT TUBE D 160 FOR 2000
17	* 4404160052	DIFFUSER ASSEMBLY D. 90 - 1800	26	* 20070R0150	FILTER BASE D. 1050 EUROPE
17	* 4404160053	DIFFUSER ASSEMBLY D. 110 - 1800	26	* 20068R0150	FILTER BASE D. 1200 EUROPE
17	* 4404160054	DIFFUSER ASSEMBLY D. 125 - 1800	26	* 21511R0150	BASE D 1400
17	* 4404160055	DIFFUSER ASSEMBLY D. 140 - 1800	26	* 21514R0150	FILTER BASE D. 1600 EUROPE
17	* 4404160056	DIFFUSER ASSEMBLY D. 110 - 2000	26	* 21517R0150	FILTER BASE D. 1800 EUROPE
17	* 4404160057	DIFFUSER ASSEMBLY D. 125 - 2000	26	* 21521R0150	FILTER BASE D. 2000 EUROPE
17	* 4404160058	DIFFUSER ASSEMBLY D. 140 - 2000			

CODE **20068 1", 20069 1", 20070 1", 20071 1", 20072 1", 21497 1", 21498 1", 21499 1", 21500 1", 21501 1", 21502 1", 21503 1", 21504 1", 21505 1", 21506 1", 21507 1", 21508 1", 21509 1", 21510 1"**

DESCRIPTION: **EUROPA FILTER (PREVIOUS MODEL - 1" ARMS) 1M. 2,5 KG. D.1050-1200-1400-1**

OBSERVATIONS

POS	CODE	OBSERVATIONS
11	4404160811	FOR: 20070 1"
11	4404160812	FOR: 20071 1"
11	4404160813	FOR: 20072 1"
11	4404160830	FOR: 20068 1", 21497 1"
11	4404160831	FOR: 20069 1", 21498 1", 21500 1"
11	4404160814	FOR: 21499 1", 21500 1"
11	4404160815	FOR: 21502 1"
11	4404160832	FOR: 21503 1"
11	4404160833	FOR: 21504 1", 21507 1"
11	4404160834	FOR: 21505 1", 21508 1"
11	4404160816	FOR: 21506 1", 21509 1"
11	4404160817	FOR: 21510 1"
12	4404300916	FOR: 20068 1" [7UT], 20069 1" [7UT], 20070 1" [2UT], 20071 1" [2UT], 20072 1" [2UT], 21497 1" [7UT], 21498 1" [7UT], 21499 1" [7UT], 21500 1" [4UT], 21501 1" [4UT], 21502 1" [4UT], 21503 1" [23UT], 21504 1" [23UT], 21505 1" [23UT], 21506 1" [23UT], 21507 1" [18UT], 21508 1" [18UT], 21509 1" [18UT], 21510 1" [18UT]
12	4404300915	FOR: 20068 1" [8UT], 20069 1" [8UT], 20070 1" [13UT], 20071 1" [13UT], 20072 1" [13UT], 21497 1" [18UT], 21498 1" [18UT], 21499 1" [18UT], 21500 1" [25UT], 21501 1" [25UT], 21502 1" [25UT], 21503 1" [10UT], 21504 1" [10UT], 21505 1" [10UT], 21506 1" [10UT], 21507 1" [15UT], 21508 1" [15UT], 21509 1" [15UT], 21510 1" [15UT]
12	4404300917	FOR: 21497 1" [2UT], 21498 1" [2UT], 21499 1" [2UT], 21500 1" [2UT], 21501 1" [2UT], 21502 1" [2UT], 21503 1" [2UT], 21504 1" [2UT], 21505 1" [2UT], 21506 1" [2UT], 21507 1" [2UT], 21508 1" [2UT], 21509 1" [2UT], 21510 1" [2UT]
15	4404160835	FOR: 20070 1"
15	4404160836	FOR: 20071 1"
15	4404160837	FOR: 20072 1"
15	4404160838	FOR: 20068 1", 21497 1"
15	4404160839	FOR: 20069 1", 21498 1", 21500 1"
15	4404160840	FOR: 21499 1", 21500 1"
15	4404160841	FOR: 21502 1"
15	4404160842	FOR: 21503 1"
15	4404160843	FOR: 21504 1", 21507 1"
15	4404160844	FOR: 21505 1", 21508 1"
15	4404160845	FOR: 21506 1", 21509 1"
15	4404160846	FOR: 21510 1"
16	4404260419	FOR: 20068 1" [6UT], 20069 1" [6UT], 20070 1" [5UT], 20071 1" [5UT], 20072 1" [5UT], 21497 1" [4UT], 21498 1" [4UT], 21499 1" [4UT], 21500 1" [7UT], 21501 1" [7UT], 21502 1" [7UT], 21503 1" [9UT], 21504 1" [9UT], 21505 1" [9UT], 21506 1" [9UT], 21507 1" [16UT], 21508 1" [16UT], 21509 1" [16UT], 21510 1" [16UT]
17	4404160041	FOR: 20070 1"
17	4404160042	FOR: 20071 1"
17	4404160043	FOR: 20072 1"
17	4404160044	FOR: 20068 1"
17	4404160045	FOR: 20069 1"
17	4404160046	FOR: 21497 1"
17	4404160047	FOR: 21498 1"
17	4404160048	FOR: 21499 1"
17	4404160049	FOR: 21500 1"

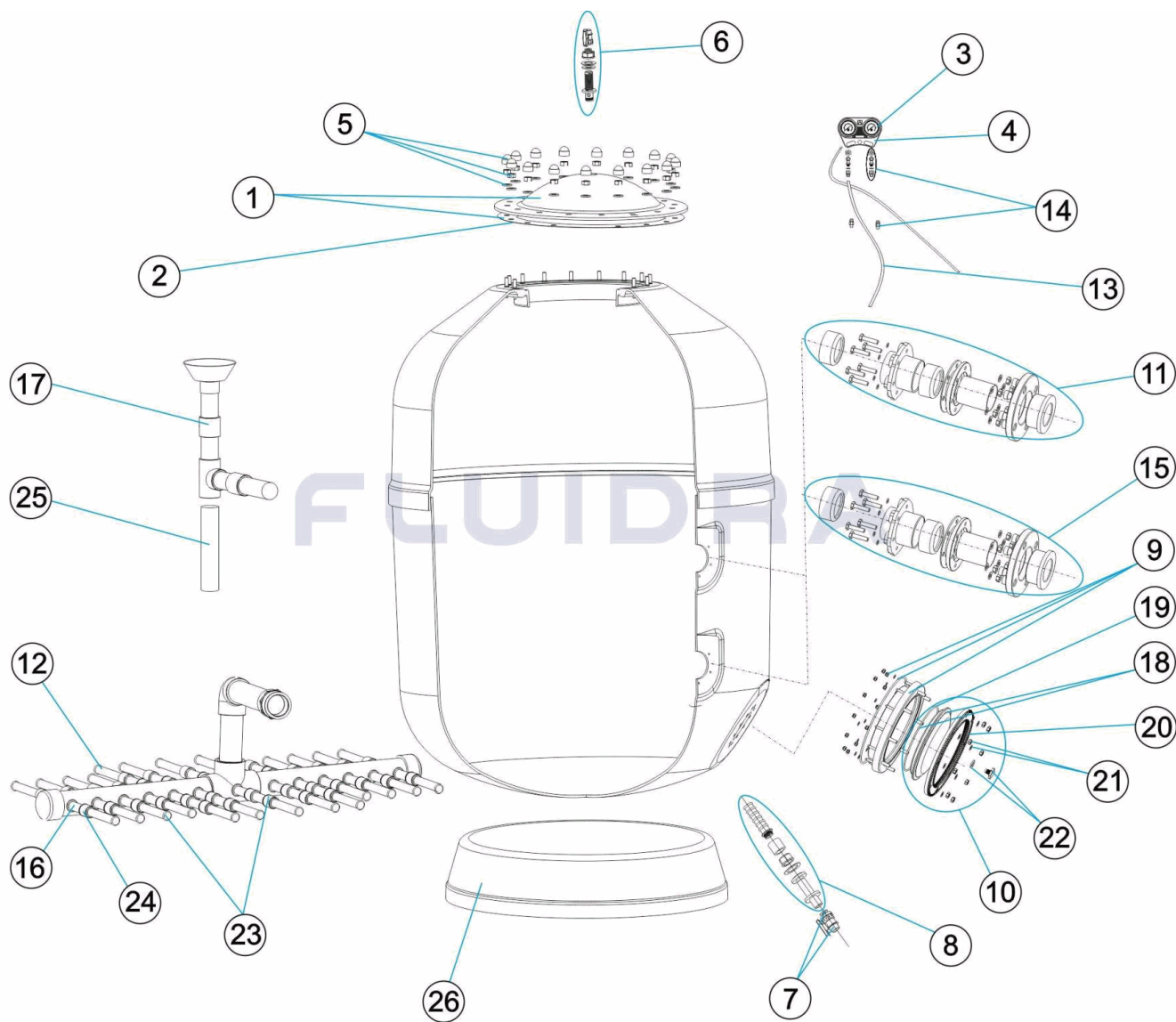
CODE **20068 1", 20069 1", 20070 1", 20071 1", 20072 1", 21497 1", 21498 1", 21499 1", 21500 1", 21501 1", 21502 1", 21503 1", 21504 1", 21505 1", 21506 1", 21507 1", 21508 1", 21509 1", 21510 1"**

DESCRIPTION: **EUROPA FILTER (PREVIOUS MODEL - 1" ARMS) 1M. 2,5 KG. D.1050-1200-1400-1**

17	4404160050	FOR: 21501 1"
17	4404160051	FOR: 21502 1"
17	4404160052	FOR: 21503 1"
17	4404160053	FOR: 21504 1"
17	4404160054	FOR: 21505 1"
17	4404160055	FOR: 21506 1"
17	4404160056	FOR: 21507 1"
17	4404160057	FOR: 21508 1"
17	4404160058	FOR: 21509 1"
17	4404160059	FOR: 21510 1"
23	4404301303	FOR: 20070 1", 20071 1", 20072 1"
23	4404200102	FOR: 20068 1", 20069 1"
23	4404200103	FOR: 21497 1", 21498 1", 21499 1"
23	4404210308	FOR: 21500 1", 21501 1", 21502 1"
23	4404230106	FOR: 21503 1", 21504 1", 21505 1", 21506 1"
23	4404230108	FOR: 21507 1", 21508 1", 21509 1", 21510 1"
24	4404260418	FOR: 20068 1" [6UT], 20069 1" [6UT], 20070 1" [5UT], 20071 1" [5UT], 20072 1" [5UT], 21497 1" [4UT], 21498 1" [4UT], 21499 1" [4UT], 21500 1" [7UT], 21501 1" [7UT], 21502 1" [7UT], 21503 1" [9UT], 21504 1" [9UT], 21505 1" [9UT], 21506 1" [9UT], 21507 1" [16UT], 21508 1" [16UT], 21509 1" [16UT], 21510 1" [16UT]
25	21512R0423	FOR: 21498 1"
25	21513R0423	FOR: 21499 1"
25	21500R0423	FOR: 21500 1"
25	21515R0423	FOR: 21501 1"
25	21502R0423	FOR: 21502 1"
25	21503R0423	FOR: 21503 1"
25	21504R0423	FOR: 21504 1"
25	21519R0423	FOR: 21505 1"
25	21506R0423	FOR: 21506 1"
25	21507R0423	FOR: 21507 1"
25	21508R0423	FOR: 21508 1"
25	21523R0423	FOR: 21509 1"
25	21510R0423	FOR: 21510 1"
26	20070R0150	FOR: 20070 1", 20071 1", 20072 1"
26	20068R0150	FOR: 20068 1", 20069 1"
26	21511R0150	FOR: 21497 1", 21498 1", 21499 1"
26	21514R0150	FOR: 21500 1", 21501 1", 21502 1"
26	21517R0150	FOR: 21503 1", 21504 1", 21505 1", 21506 1"
26	21521R0150	FOR: 21508 1", 21509 1"

CODICE 20068 1", 20069 1", 20070 1", 20071 1", 20072 1", 21497 1", 21498 1", 21499 1", 21500 1", 21501 1", 21502 1", 21503 1", 21504 1", 21505 1", 21506 1", 21507 1", 21508 1", 21509 1", 21510 1"

DESCRIZIONE: FILTRO EUROPA (MODELLO PRECEDENTE - CANDELOTTI 1") 1M. 2,5 KG. D.105



ITALIANO

POS	CODICE	DESCRIZIONE	POS	CODICE	DESCRIZIONE
1	4404160102	COPERCHIO FILTRO + GUARNIZIONE	11	* 4404160813	GRUPPO ENTRATA 90 1050
2	4404160101	O-RING COPERCHIO	11	* 4404160830	GRUPPO ENTRATA 75 1200-1400
3	4404170102	MANOMETRO 3 ATM	11	* 4404160831	GRUPPO ENTRATA 90 1200-1400-1600
4	4404170105	CORPO PANNELLO MANOMETRI	11	* 4404160814	GRUPPO ENTRATA 110 1400-1600
5	4404260211	BULLONERIA COPERCHIO FILTRO	11	* 4404160815	GRUPPO ENTRATA 125 1600
6	4404260210	FISSAGGIO MANOMETRO	11	* 4404160832	GRUPPO ENTRATA 90 1800
6	4404160806	SFIATO ARIA 3/4"	11	* 4404160833	GRUPPO ENTRATA 110 1800-2000
7	4404160807	VALVOLA A SFERA 3/4"	11	* 4404160834	GRUPPO ENTRATA 125 1800-2000
8	4404160808	SCARICO ACQUA 3/4"	11	* 4404160816	GRUPPO ENTRATA 140 1800-2000
9	4404160809	ANELLO COLLO 20 VITI	11	* 4404160817	GRUPPO ENTRATA 160 2000
10	4404160810	COPERCHIO SVUOTAMENTO SABBIA	12	* 4404300916	CANDELOTTO COLLECTORE 1" 225 M "

* -> SI FACCIARE RIFERIMENTO AL FOGLIO DELLE OSSERVAZIONI

CODICE 20068 1", 20069 1", 20070 1", 20071 1", 20072 1", 21497 1", 21498 1", 21499 1", 21500 1", 21501 1", 21502 1", 21503 1", 21504 1", 21505 1", 21506 1", 21507 1", 21508 1", 21509 1", 21510 1"

DESCRIZIONE: FILTRO EUROPA (MODELLO PRECEDENTE - CANDELOTTI 1") 1M. 2,5 KG. D.105

11	* 4404160811	GRUPPO ENTRATA 63 1050	12	* 4404300915	CANDELOTTO COLLECTORE 1" 175 M "
11	* 4404160812	GRUPPO ENTRATA 75 1050	12	* 4404300917	CANDELOTTO COLLECTORE 1" 110 M "
13	4404170104	RACCORDO PANNELLO + TUBO	17	* 4404160059	RACCORDO DIFFUSORE D. 160 - 2000
14	4404170103	SFIATO PANNELLO MANOMETRI	18	4404160847	COPERCHIO FILTRO D. 220 NERO
15	* 4404160835	KIT USCITE D. 63 FILTRO EUROPE D. 1050	19	4404260106	GUARNIZIONE FLANGIA FISSAGGIO VALVOLE TOP
15	* 4404160836	KIT USCITE D. 75 FILTRO EUROPE D. 1050	20	4404160849	FLANGIA FISSAGGIO COPERCHIO
15	* 4404160837	KIT USCITE D. 90 FILTRO EUROPE D. 1050	21	4404160850	BULLONERIA FISSAGGIO COPERCHIO M8
15	* 4404160838	KIT USCITE D. 75 FILTRO EUROPE D. 1200-1400	22	4404040113	TAPPO SPURGO E GUARNIZIONE
15	* 4404160839	KIT USCITE D. 90 FILTRO EUROPE D. 1200-1400	23	* 4404301303	GRUPPO CANDELOTTO COLLECTORE 1" D. 1050 E
15	* 4404160840	KIT USCITE D. 110 FILTRO EUROPE D. 1400-1600	23	* 4404200102	GRUPPO CANDELOTTO COLLECTORE 1" D. 1200 E
15	* 4404160841	KIT USCITE D. 125 FILTRO EUROPE D. 1600	23	* 4404200103	GRUPPO CANDELOTTO COLLECTORE 1" D. 1400 E
15	* 4404160842	KIT USCITE D. 90 FILTRO EUROPE D. 1800	23	* 4404210308	GRUPPO CANDELOTTO COLLECTORE 1" D. 1600 E
15	* 4404160843	KIT USCITE D. 110 FILTRO EUROPE D. 1800-2000	23	* 4404230106	GRUPPO CANDELOTTO COLLECTORE 1" D. 1800 E
15	* 4404160844	ENSEMBLE SORTIE EUROPE D.125 POUR 1800-2000	23	* 4404230108	GRUPPO CANDELOTTO COLLECTORE 1" D. 2000 E
15	* 4404160845	KIT USCITE D. 140 FILTRO EUROPE D. 1800-2000	24	* 4404260418	MANICOTTO DA 1" PER CANDELOTT "
15	* 4404160846	KIT USCITE D. 160 FILTRO EUROPE D. 2000	25	* 21512R0423	TUBO SUPPORTO DIFFUSORE D. 90 PER 1400
16	* 4404260419	CANDELOTTO COLLECTORE 1" 100M "	25	* 21513R0423	TUBO SUPPORTO DIFFUSORE D. 110 PER 1400
17	* 4404160041	RACCORDO DIFFUSORE D. 63 - 1050	25	* 21500R0423	TUBO SUPPORTO DIFFUSORE D. 90 PER 1600
17	* 4404160042	RACCORDO DIFFUSORE D. 75 - 1050	25	* 21515R0423	TUBO SUPPORTO DIFFUSORE D. 110 PER 1600
17	* 4404160043	RACCORDO DIFFUSORE D. 90 - 1050	25	* 21502R0423	TUBO SUPPORTO DIFFUSORE D. 125 PER 1600
17	* 4404160044	RACCORDO DIFFUSORE D. 75 - 1200	25	* 21503R0423	TUBO SUPPORTO DIFFUSORE D. 90 PER 1800
17	* 4404160045	RACCORDO DIFFUSORE D. 90 - 1200	25	* 21504R0423	TUBO SUPPORTO DIFFUSORE D. 110 PER 1800
17	* 4404160046	RACCORDO DIFFUSORE D. 75 - 1400	25	* 21519R0423	TUBO SUPPORTO DIFFUSORE D. 125 PER 1800
17	* 4404160047	RACCORDO DIFFUSORE D. 90 - 1400	25	* 21506R0423	TUBO SUPPORTO DIFFUSORE D. 140 PER 1800
17	* 4404160048	RACCORDO DIFFUSORE D. 110 - 1400	25	* 21507R0423	TUBO SUPPORTO DIFFUSORE D. 110 PER 2000
17	* 4404160049	RACCORDO DIFFUSORE D. 90 - 1600	25	* 21508R0423	TUBO SUPPORTO DIFFUSORE D. 125 PER 2000
17	* 4404160050	RACCORDO DIFFUSORE D. 110 - 1600	25	* 21523R0423	TUBO SUPPORTO DIFFUSORE D. 140 PER 2000
17	* 4404160051	RACCORDO DIFFUSORE D. 125 - 1600	25	* 21510R0423	TUBO SUPPORTO DIFFUSORE D. 160 PER 2000
17	* 4404160052	RACCORDO DIFFUSORE D. 90 - 1800	26	* 20070R0150	BASE FILTRO D 1050 EUROPE
17	* 4404160053	RACCORDO DIFFUSORE D. 110 - 1800	26	* 20068R0150	BASE FILTRO D 1200 EUROPE
17	* 4404160054	RACCORDO DIFFUSORE D. 125 - 1800	26	* 21511R0150	BASE D. 1400
17	* 4404160055	RACCORDO DIFFUSORE D. 140 - 1800	26	* 21514R0150	BASE FILTRO D 1600 EUROPE
17	* 4404160056	RACCORDO DIFFUSORE D. 110 - 2000	26	* 21517R0150	BASE FILTRO D 1800 EUROPE
17	* 4404160057	RACCORDO DIFFUSORE D. 125 - 2000	26	* 21521R0150	BASE FILTRO D 2000 EUROPE
17	* 4404160058	RACCORDO DIFFUSORE D. 140 - 2000			

CODICE **20068 1", 20069 1", 20070 1", 20071 1", 20072 1", 21497 1", 21498 1", 21499 1", 21500 1", 21501 1", 21502 1", 21503 1", 21504 1", 21505 1", 21506 1", 21507 1", 21508 1", 21509 1", 21510 1"**

DESCRIZIONE: FILTRO EUROPA (MODELLO PRECEDENTE - CANDELOTTI 1") 1M. 2,5 KG. D.105

OSSERVAZIONI

POS	CODICE	OSSERVAZIONI
11	4404160811	PER: 20070 1"
11	4404160812	PER: 20071 1"
11	4404160813	PER: 20072 1"
11	4404160830	PER: 20068 1", 21497 1"
11	4404160831	PER: 20069 1", 21498 1", 21500 1"
11	4404160814	PER: 21499 1", 21500 1"
11	4404160815	PER: 21502 1"
11	4404160832	PER: 21503 1"
11	4404160833	PER: 21504 1", 21507 1"
11	4404160834	PER: 21505 1", 21508 1"
11	4404160816	PER: 21506 1", 21509 1"
11	4404160817	PER: 21510 1"
12	4404300916	PER: 20068 1" [7UT], 20069 1" [7UT], 20070 1" [2UT], 20071 1" [2UT], 20072 1" [2UT], 21497 1" [7UT], 21498 1" [7UT], 21499 1" [7UT], 21500 1" [4UT], 21501 1" [4UT], 21502 1" [4UT], 21503 1" [23UT], 21504 1" [23UT], 21505 1" [23UT], 21506 1" [23UT], 21507 1" [18UT], 21508 1" [18UT], 21509 1" [18UT], 21510 1" [18UT]
12	4404300915	PER: 20068 1" [8UT], 20069 1" [8UT], 20070 1" [13UT], 20071 1" [13UT], 20072 1" [13UT], 21497 1" [18UT], 21498 1" [18UT], 21499 1" [18UT], 21500 1" [25UT], 21501 1" [25UT], 21502 1" [25UT], 21503 1" [10UT], 21504 1" [10UT], 21505 1" [10UT], 21506 1" [10UT], 21507 1" [15UT], 21508 1" [15UT], 21509 1" [15UT], 21510 1" [15UT]
12	4404300917	PER: 21497 1" [2UT], 21498 1" [2UT], 21499 1" [2UT], 21500 1" [2UT], 21501 1" [2UT], 21502 1" [2UT], 21503 1" [2UT], 21504 1" [2UT], 21505 1" [2UT], 21506 1" [2UT], 21507 1" [2UT], 21508 1" [2UT], 21509 1" [2UT], 21510 1" [2UT]
15	4404160835	PER: 20070 1"
15	4404160836	PER: 20071 1"
15	4404160837	PER: 20072 1"
15	4404160838	PER: 20068 1", 21497 1"
15	4404160839	PER: 20069 1", 21498 1", 21500 1"
15	4404160840	PER: 21499 1", 21500 1"
15	4404160841	PER: 21502 1"
15	4404160842	PER: 21503 1"
15	4404160843	PER: 21504 1", 21507 1"
15	4404160844	PER: 21505 1", 21508 1"
15	4404160845	PER: 21506 1", 21509 1"
15	4404160846	PER: 21510 1"
16	4404260419	PER: 20068 1" [6UT], 20069 1" [6UT], 20070 1" [5UT], 20071 1" [5UT], 20072 1" [5UT], 21497 1" [4UT], 21498 1" [4UT], 21499 1" [4UT], 21500 1" [7UT], 21501 1" [7UT], 21502 1" [7UT], 21503 1" [9UT], 21504 1" [9UT], 21505 1" [9UT], 21506 1" [9UT], 21507 1" [16UT], 21508 1" [16UT], 21509 1" [16UT], 21510 1" [16UT]
17	4404160041	PER: 20070 1"
17	4404160042	PER: 20071 1"
17	4404160043	PER: 20072 1"
17	4404160044	PER: 20068 1"
17	4404160045	PER: 20069 1"
17	4404160046	PER: 21497 1"
17	4404160047	PER: 21498 1"
17	4404160048	PER: 21499 1"
17	4404160049	PER: 21500 1"

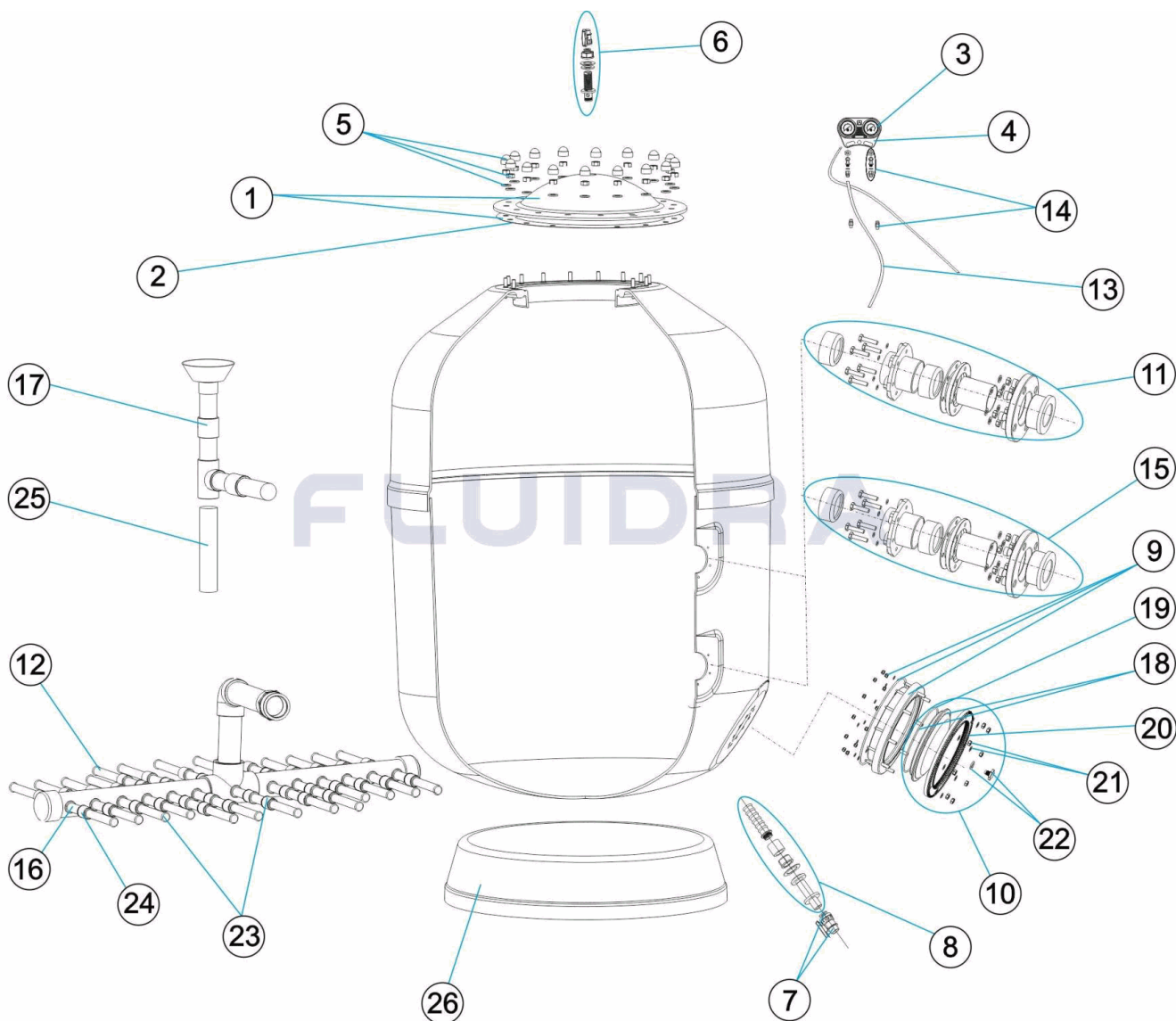
CODICE **20068 1", 20069 1", 20070 1", 20071 1", 20072 1", 21497 1", 21498 1", 21499 1", 21500 1", 21501 1", 21502 1", 21503 1", 21504 1", 21505 1", 21506 1", 21507 1", 21508 1", 21509 1", 21510 1"**

DESCRIZIONE: FILTRO EUROPA (MODELLO PRECEDENTE - CANDELOTTI 1") 1M. 2,5 KG. D.105

17	4404160050	PER: 21501 1"
17	4404160051	PER: 21502 1"
17	4404160052	PER: 21503 1"
17	4404160053	PER: 21504 1"
17	4404160054	PER: 21505 1"
17	4404160055	PER: 21506 1"
17	4404160056	PER: 21507 1"
17	4404160057	PER: 21508 1"
17	4404160058	PER: 21509 1"
17	4404160059	PER: 21510 1"
23	4404301303	PER: 20070 1", 20071 1", 20072 1"
23	4404200102	PER: 20068 1", 20069 1"
23	4404200103	PER: 21497 1", 21498 1", 21499 1"
23	4404210308	PER: 21500 1", 21501 1", 21502 1"
23	4404230106	PER: 21503 1", 21504 1", 21505 1", 21506 1"
23	4404230108	PER: 21507 1", 21508 1", 21509 1", 21510 1"
24	4404260418	PER: 20068 1" [6UT], 20069 1" [6UT], 20070 1" [5UT], 20071 1" [5UT], 20072 1" [5UT], 21497 1" [4UT], 21498 1" [4UT], 21499 1" [4UT], 21500 1" [7UT], 21501 1" [7UT], 21502 1" [7UT], 21503 1" [9UT], 21504 1" [9UT], 21505 1" [9UT], 21506 1" [9UT], 21507 1" [16UT], 21508 1" [16UT], 21509 1" [16UT], 21510 1" [16UT]
25	21512R0423	PER: 21498 1"
25	21513R0423	PER: 21499 1"
25	21500R0423	PER: 21500 1"
25	21515R0423	PER: 21501 1"
25	21502R0423	PER: 21502 1"
25	21503R0423	PER: 21503 1"
25	21504R0423	PER: 21504 1"
25	21519R0423	PER: 21505 1"
25	21506R0423	PER: 21506 1"
25	21507R0423	PER: 21507 1"
25	21508R0423	PER: 21508 1"
25	21523R0423	PER: 21509 1"
25	21510R0423	PER: 21510 1"
26	20070R0150	PER: 20070 1", 20071 1", 20072 1"
26	20068R0150	PER: 20068 1", 20069 1"
26	21511R0150	PER: 21497 1", 21498 1", 21499 1"
26	21514R0150	PER: 21500 1", 21501 1", 21502 1"
26	21517R0150	PER: 21503 1", 21504 1", 21505 1", 21506 1"
26	21521R0150	PER: 21508 1", 21509 1"

CODE 20068 1", 20069 1", 20070 1", 20071 1", 20072 1", 21497 1", 21498 1", 21499 1", 21500 1", 21501 1", 21502 1", 21503 1", 21504 1", 21505 1", 21506 1", 21507 1", 21508 1", 21509 1", 21510 1"

BESCHREIBUNG: FILTER EUROPA (VORMODELL - SCHLITZROHRE 1") 1M 2,5 KG D.1050-1200-1


DEUTSCH

POS	CODE	BESCHREIBUNG	POS	CODE	BESCHREIBUNG
1	4404160102	FILTERDECKEL UND DICHTUNG	11	* 4404160813	SET EINGANG EUROPE D. 90 FÜR 1050
2	4404160101	O-RING ABDECKUNG	11	* 4404160830	SET EINGANG EUROPE D. 75 FÜR 1200 - 1400
3	4404170102	MANOMETER 3 ATM	11	* 4404160831	SET EINGANG EUROPE D. 90 FÜR 1200 - 1400 - 1600
4	4404170105	GEHÄUSE MANOMETER	11	* 4404160814	SET EINGANG EUROPE D. 110 FÜR 1400 - 1600
5	4404260211	SCHRAUBENSATZ FILTERDECKEL	11	* 4404160815	SET EINGANG EUROPE D. 125 FÜR 1600
6	4404260210	FIXIERUNG MANOMETER	11	* 4404160832	SET EINGANG EUROPE D. 90 FÜR 1800
6	4404160806	ENTLÜFTUNG 3/4"	11	* 4404160833	SET EINGANG EUROPE D. 110 FÜR 1800 - 2000
7	4404160807	KUGELVENTIL 3/4"	11	* 4404160834	SET EINGANG EUROPE D. 125 FÜR 1800 - 2000
8	4404160808	WASSERABLAß 3/4"	11	* 4404160816	SET EINGANG EUROPE D. 140 FÜR 1800 - 2000
9	4404160809	FILTERRING 20 SCHRAUBEN	11	* 4404160817	SET EINGANG EUROPE D. 160 FÜR 2000
10	4404160810	ABDECKUNG SANDAUSLAß	12	* 4404300916	FILTERSTERN-SCHLITZROHR 1" 225 M "

* -> SIEHE ANMERKUNGSBLATT

CODE **20068 1", 20069 1", 20070 1", 20071 1", 20072 1", 21497 1", 21498 1", 21499 1", 21500 1", 21501 1", 21502 1", 21503 1", 21504 1", 21505 1", 21506 1", 21507 1", 21508 1", 21509 1", 21510 1"**

BESCHREIBUNG: **FILTER EUROPA (VORMODELL - SCHLITZROHRE 1") 1M 2,5 KG D.1050-1200-1**

11	* 4404160811	SET EINGANG EUROPE D. 63 FÜR 1050	12	* 4404300915	FILTERSTERN-SCHLITZROHR 1" 175 M "
11	* 4404160812	SET EINGANG EUROPE D. 75 FÜR 1050	12	* 4404300917	FILTERSTERN-SCHLITZROHR 1" 110 M "
13	4404170104	GEWINDESTÜCK MIT ROHR	17	* 4404160059	SET WASSERVERTEILER D. 160 - 2000
14	4404170103	ABLASS MANOMETER	18	4404160847	FILTERDECKEL D. 220 SCHWARZ
15	* 4404160835	SET AUSGANG EUROPE D. 63 FÜR 1050	19	4404260106	DICHTUNG FIXIERRING VENTIL
15	* 4404160836	SET AUSGANG EUROPE D. 75 FÜR 1050	20	4404160849	FIXIERRING ABDECKUNG
15	* 4404160837	SET AUSGANG EUROPE D. 90 FÜR 1050	21	4404160850	FIXIERSCHRAUBEN ABDECKUNG M8
15	* 4404160838	SET AUSGANG EUROPE D. 75 FÜR 1200 - 1400	22	4404040113	ABLASSSTOPFEN UND DICHTUNG
15	* 4404160839	SET AUSGANG EUROPE D. 90 FÜR 1200 - 1400 - 1600	23	* 4404301303	SET FILTERSTERN-SCHLITZROHR 1" D. 1050 EUROPE
15	* 4404160840	SET AUSGANG EUROPE D. 110 FÜR 1400 - 1600	23	* 4404200102	SET FILTERSTERN-SCHLITZROHR 1" D. 1200 EUROPE
15	* 4404160841	SET AUSGANG EUROPE D. 125 FÜR 1600	23	* 4404200103	SET FILTERSTERN-SCHLITZROHR 1" D. 1400 EUROPE
15	* 4404160842	SET AUSGANG EUROPE D. 90 FÜR 1800	23	* 4404210308	SET FILTERSTERN-SCHLITZROHR 1" D. 1600 EUROPE
15	* 4404160843	SET AUSGANG EUROPE D. 110 FÜR 1800 - 2000	23	* 4404230106	SET FILTERSTERN-SCHLITZROHR 1" D. 1800 EUROPE
15	* 4404160844	SET AUSGANG EUROPE D. 125 FÜR 1800 - 2000	23	* 4404230108	SET FILTERSTERN-SCHLITZROHR 1" D. 2000 EUROPE
15	* 4404160845	SET AUSGANG EUROPE D. 140 FÜR 1800 - 2000	24	* 4404260418	NIPPEL ANSCHLUSSVERBINDUNG 1"
15	* 4404160846	SET AUSGANG EUROPE D. 160 FÜR 2000	25	* 21512R0423	HALTERUNG WASSERVERTEILER D. 90 FÜR 1400
16	* 4404260419	FILTERSTERN-SCHLITZROHR 1" 100 M "	25	* 21513R0423	HALTERUNG WASSERVERTEILER D. 110 FÜR 1400
17	* 4404160041	SET WASSERVERTEILER D. 63 - 1050	25	* 21500R0423	HALTERUNG WASSERVERTEILER D. 90 FÜR 1600
17	* 4404160042	SET WASSERVERTEILER D. 75 - 1050	25	* 21515R0423	SET HALTERUNG WASSERVERTEILER D. 1600 - 1100
17	* 4404160043	SET WASSERVERTEILER D. 90 - 1050	25	* 21502R0423	HALTERUNG WASSERVERTEILER D. 125 FÜR 1600
17	* 4404160044	SET WASSERVERTEILER D. 75 - 1200	25	* 21503R0423	HALTERUNG WASSERVERTEILER D. 90 FÜR 1800
17	* 4404160045	SET WASSERVERTEILER D. 90 - 1200	25	* 21504R0423	HALTERUNG WASSERVERTEILER D. 110 FÜR 1800
17	* 4404160046	SET WASSERVERTEILER D. 75 - 1400	25	* 21519R0423	HALTERUNG WASSERVERTEILER D. 125 FÜR 1800
17	* 4404160047	SET WASSERVERTEILER D. 90 - 1400	25	* 21506R0423	HALTERUNG WASSERVERTEILER D. 140 FÜR 1800
17	* 4404160048	SET WASSERVERTEILER D. 110 - 1400	25	* 21507R0423	HALTERUNG WASSERVERTEILER D. 110 FÜR 2000
17	* 4404160049	SET WASSERVERTEILER D. 90 - 1600	25	* 21508R0423	HALTERUNG WASSERVERTEILER D. 125 FÜR 2000
17	* 4404160050	SET WASSERVERTEILER D. 110 - 1600	25	* 21523R0423	HALTERUNG WASSERVERTEILER D. 140 FÜR 2000
17	* 4404160051	SET WASSERVERTEILER D. 125 - 1600	25	* 21510R0423	HALTERUNG WASSERVERTEILER D. 160 FÜR 2000
17	* 4404160052	SET WASSERVERTEILER D. 90 - 1800	26	* 20070R0150	FILTERFUSS 1050 EUROPE
17	* 4404160053	SET WASSERVERTEILER D. 110 - 1800	26	* 20068R0150	FILTERFUSS 1200 EUROPE
17	* 4404160054	SET WASSERVERTEILER D. 125 - 1800	26	* 21511R0150	FUSS D. 1400
17	* 4404160055	SET WASSERVERTEILER D. 140 - 1800	26	* 21514R0150	FILTERFUSS 1600 EUROPE
17	* 4404160056	SET WASSERVERTEILER D. 110 - 2000	26	* 21517R0150	FILTERFUSS 1800 EUROPE
17	* 4404160057	SET WASSERVERTEILER D. 125 - 2000	26	* 21521R0150	FILTERFUSS 2000 EUROPE
17	* 4404160058	SET WASSERVERTEILER D. 140 - 2000			

CODE **20068 1", 20069 1", 20070 1", 20071 1", 20072 1", 21497 1", 21498 1", 21499 1", 21500 1", 21501 1", 21502 1", 21503 1", 21504 1", 21505 1", 21506 1", 21507 1", 21508 1", 21509 1", 21510 1"**

BESCHREIBUNG: **FILTER EUROPA (VORMODELL - SCHLITZROHRE 1") 1M 2,5 KG D.1050-1200-1**

HINWEISE

POS	CODE	HINWEISE
11	4404160811	FÜR: 20070 1"
11	4404160812	FÜR: 20071 1"
11	4404160813	FÜR: 20072 1"
11	4404160830	FÜR: 20068 1", 21497 1"
11	4404160831	FÜR: 20069 1", 21498 1", 21500 1"
11	4404160814	FÜR: 21499 1", 21500 1"
11	4404160815	FÜR: 21502 1"
11	4404160832	FÜR: 21503 1"
11	4404160833	FÜR: 21504 1", 21507 1"
11	4404160834	FÜR: 21505 1", 21508 1"
11	4404160816	FÜR: 21506 1", 21509 1"
11	4404160817	FÜR: 21510 1"
12	4404300916	FÜR: 20068 1" [7UT], 20069 1" [7UT], 20070 1" [2UT], 20071 1" [2UT], 20072 1" [2UT], 21497 1" [7UT], 21498 1" [7UT], 21499 1" [7UT], 21500 1" [4UT], 21501 1" [4UT], 21502 1" [4UT], 21503 1" [23UT], 21504 1" [23UT], 21505 1" [23UT], 21506 1" [23UT], 21507 1" [18UT], 21508 1" [18UT], 21509 1" [18UT], 21510 1" [18UT]
12	4404300915	FÜR: 20068 1" [8UT], 20069 1" [8UT], 20070 1" [13UT], 20071 1" [13UT], 20072 1" [13UT], 21497 1" [18UT], 21498 1" [18UT], 21499 1" [18UT], 21500 1" [25UT], 21501 1" [25UT], 21502 1" [25UT], 21503 1" [10UT], 21504 1" [10UT], 21505 1" [10UT], 21506 1" [10UT], 21507 1" [15UT], 21508 1" [15UT], 21509 1" [15UT], 21510 1" [15UT]
12	4404300917	FÜR: 21497 1" [2UT], 21498 1" [2UT], 21499 1" [2UT], 21500 1" [2UT], 21501 1" [2UT], 21502 1" [2UT], 21503 1" [2UT], 21504 1" [2UT], 21505 1" [2UT], 21506 1" [2UT], 21507 1" [2UT], 21508 1" [2UT], 21509 1" [2UT], 21510 1" [2UT]
15	4404160835	FÜR: 20070 1"
15	4404160836	FÜR: 20071 1"
15	4404160837	FÜR: 20072 1"
15	4404160838	FÜR: 20068 1", 21497 1"
15	4404160839	FÜR: 20069 1", 21498 1", 21500 1"
15	4404160840	FÜR: 21499 1", 21500 1"
15	4404160841	FÜR: 21502 1"
15	4404160842	FÜR: 21503 1"
15	4404160843	FÜR: 21504 1", 21507 1"
15	4404160844	FÜR: 21505 1", 21508 1"
15	4404160845	FÜR: 21506 1", 21509 1"
15	4404160846	FÜR: 21510 1"
16	4404260419	FÜR: 20068 1" [6UT], 20069 1" [6UT], 20070 1" [5UT], 20071 1" [5UT], 20072 1" [5UT], 21497 1" [4UT], 21498 1" [4UT], 21499 1" [4UT], 21500 1" [7UT], 21501 1" [7UT], 21502 1" [7UT], 21503 1" [9UT], 21504 1" [9UT], 21505 1" [9UT], 21506 1" [9UT], 21507 1" [16UT], 21508 1" [16UT], 21509 1" [16UT], 21510 1" [16UT]
17	4404160041	FÜR: 20070 1"
17	4404160042	FÜR: 20071 1"
17	4404160043	FÜR: 20072 1"
17	4404160044	FÜR: 20068 1"
17	4404160045	FÜR: 20069 1"
17	4404160046	FÜR: 21497 1"
17	4404160047	FÜR: 21498 1"
17	4404160048	FÜR: 21499 1"
17	4404160049	FÜR: 21500 1"

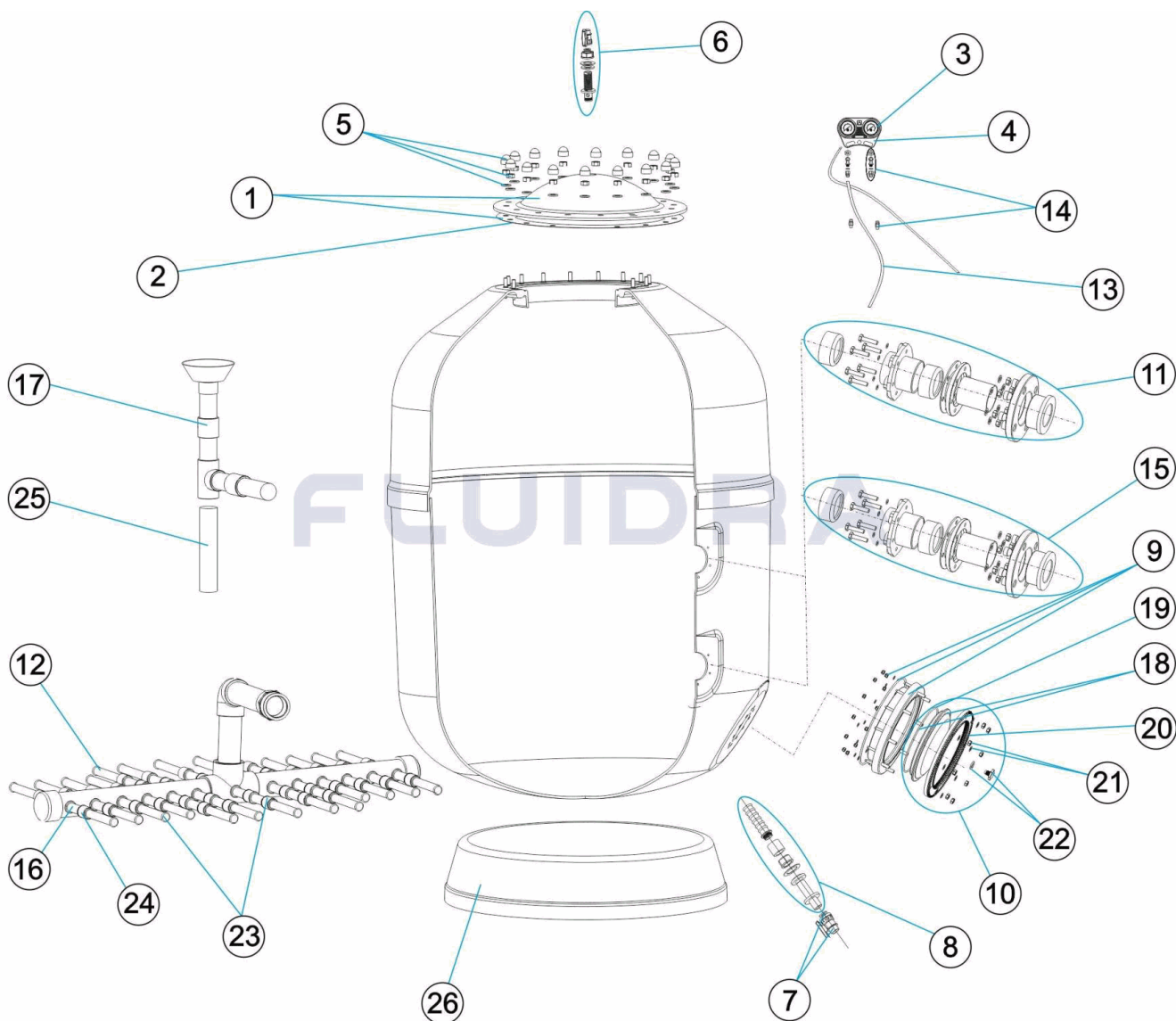
CODE **20068 1", 20069 1", 20070 1", 20071 1", 20072 1", 21497 1", 21498 1", 21499 1", 21500 1", 21501 1", 21502 1", 21503 1", 21504 1", 21505 1", 21506 1", 21507 1", 21508 1", 21509 1", 21510 1"**

BESCHREIBUNG: **FILTER EUROPA (VORMODELL - SCHLITZROHRE 1") 1M 2,5 KG D.1050-1200-1**

17	4404160050	FÜR: 21501 1"
17	4404160051	FÜR: 21502 1"
17	4404160052	FÜR: 21503 1"
17	4404160053	FÜR: 21504 1"
17	4404160054	FÜR: 21505 1"
17	4404160055	FÜR: 21506 1"
17	4404160056	FÜR: 21507 1"
17	4404160057	FÜR: 21508 1"
17	4404160058	FÜR: 21509 1"
17	4404160059	FÜR: 21510 1"
23	4404301303	FÜR: 20070 1", 20071 1", 20072 1"
23	4404200102	FÜR: 20068 1", 20069 1"
23	4404200103	FÜR: 21497 1", 21498 1", 21499 1"
23	4404210308	FÜR: 21500 1", 21501 1", 21502 1"
23	4404230106	FÜR: 21503 1", 21504 1", 21505 1", 21506 1"
23	4404230108	FÜR: 21507 1", 21508 1", 21509 1", 21510 1"
24	4404260418	FÜR: 20068 1" [6UT], 20069 1" [6UT], 20070 1" [5UT], 20071 1" [5UT], 20072 1" [5UT], 21497 1" [4UT], 21498 1" [4UT], 21499 1" [4UT], 21500 1" [7UT], 21501 1" [7UT], 21502 1" [7UT], 21503 1" [9UT], 21504 1" [9UT], 21505 1" [9UT], 21506 1" [9UT], 21507 1" [16UT], 21508 1" [16UT], 21509 1" [16UT], 21510 1" [16UT]
25	21512R0423	FÜR: 21498 1"
25	21513R0423	FÜR: 21499 1"
25	21500R0423	FÜR: 21500 1"
25	21515R0423	FÜR: 21501 1"
25	21502R0423	FÜR: 21502 1"
25	21503R0423	FÜR: 21503 1"
25	21504R0423	FÜR: 21504 1"
25	21519R0423	FÜR: 21505 1"
25	21506R0423	FÜR: 21506 1"
25	21507R0423	FÜR: 21507 1"
25	21508R0423	FÜR: 21508 1"
25	21523R0423	FÜR: 21509 1"
25	21510R0423	FÜR: 21510 1"
26	20070R0150	FÜR: 20070 1", 20071 1", 20072 1"
26	20068R0150	FÜR: 20068 1", 20069 1"
26	21511R0150	FÜR: 21497 1", 21498 1", 21499 1"
26	21514R0150	FÜR: 21500 1", 21501 1", 21502 1"
26	21517R0150	FÜR: 21503 1", 21504 1", 21505 1", 21506 1"
26	21521R0150	FÜR: 21508 1", 21509 1"

CODIGO 20068 1", 20069 1", 20070 1", 20071 1", 20072 1", 21497 1", 21498 1", 21499 1", 21500 1", 21501 1", 21502 1", 21503 1", 21504 1", 21505 1", 21506 1", 21507 1", 21508 1", 21509 1", 21510 1"

DESCRIÇÃO: FILTRO EUROPA (MODELO ANTIGO - BRAÇOS 1") 1M. 2,5 KG. D.1050-1200-1400-1



PORTUGUES

POS	CODIGO	DESCRIÇÃO	POS	CODIGO	DESCRIÇÃO
1	4404160102	TAMPA FILTRO + JUNTA	11	* 4404160813	CONJUNTO ENTRADA 90 1050
2	4404160101	JUNTA TÓRICA TAMPA	11	* 4404160830	CONJUNTO ENTRADA 75 1200-1400
3	4404170102	MANÔMETRO 3 ATM	11	* 4404160831	CONJUNTO ENTRADA 90 1200-1400-1600
4	4404170105	CORPO PAINEL MANÔMETRO	11	* 4404160814	CONJUNTO ENTRADA 110 1400-1600
5	4404260211	PARAFUSOS TAMPA FILTRO	11	* 4404160815	CONJUNTO ENTRADA 125 1600
6	4404260210	FIXAÇÃO MANOMETRO	11	* 4404160832	CONJUNTO ENTRADA 90 1800
6	4404160806	PURGA AREIA 3/4"	11	* 4404160833	CONJUNTO ENTRADA 110 1800-2000
7	4404160807	VALVULA BOLA 3/4"	11	* 4404160834	CONJUNTO ENTRADA 125 1800-2000
8	4404160808	PURGA ÁGUA 3/4"	11	* 4404160816	CONJUNTO ENTRADA 140 1800-2000
9	4404160809	ARO PESCOCOÇO 20 PARAFUSOS	11	* 4404160817	CONJUNTO ENTRADA 160 2000
10	4404160810	TAMPA ESVAZIAMENTO AREIA	12	* 4404300916	BRAÇO COLECTOR 1" 225 M "

CODIGO 20068 1", 20069 1", 20070 1", 20071 1", 20072 1", 21497 1", 21498 1", 21499 1", 21500 1", 21501 1", 21502 1", 21503 1", 21504 1", 21505 1", 21506 1", 21507 1", 21508 1", 21509 1", 21510 1"

DESCRIÇÃO: FILTRO EUROPA (MODELO ANTIGO - BRAÇOS 1") 1M. 2,5 KG. D.1050-1200-1400-1

11	* 4404160811	CONJUNTO ENTRADA 63 1050	12	* 4404300915	BRAÇO COLECTOR 1" 175 M "
11	* 4404160812	CONJUNTO ENTRADA 75 1050	12	* 4404300917	BRAÇO COLECTOR 1" 110 M "
13	4404170104	RACORD PAINEL + TUBO	17	* 4404160059	CJTO. DIFUSOR D. 160 - 2000
14	4404170103	PURGA PAINEL MANÔMETROS	18	4404160847	TAMPA FILTRO D.220 NEGRA
15	* 4404160835	CONJUNTO SAIDA EUROPE D. 63 PARA 1050	19	4404260106	JUNTA ARO FIXAÇÃO VALVULA TOP
15	* 4404160836	CONJUNTO SAIDA EUROPE D. 75 PARA 1050	20	4404160849	ARO FIXAÇÃO TAMPA
15	* 4404160837	CONJUNTO SAIDA EUROPE D. 90 PARA 1050	21	4404160850	PARAFUSOS FIXAÇÃO TAMPA M8
15	* 4404160838	CONJUNTO SAIDA EUROPE D. 75 PARA 1200 - 1400	22	4404040113	TAMPÃO PURGA E JUNTA
15	* 4404160839	CONJUNTO SAIDA EUROPE D. 90 PARA 1200 - 1400	23	* 4404301303	CJTO. BRAÇO COLECTOR 1" D. 1050 EUROP "
15	* 4404160840	CONJUNTO SAIDA EUROPE D. 110 PARA 1400 - 1600	23	* 4404200102	CJTO. BRAÇO COLECTOR 1" D. 1200 EUROP "
15	* 4404160841	CONJUNTO SAIDA EUROPE D. 125 PARA 1600	23	* 4404200103	CJTO. BRAÇO COLECTOR 1" D. 1400 EUROP "
15	* 4404160842	CONJUNTO SAIDA EUROPE D. 90 PARA 1800	23	* 4404210308	CJTO. BRAÇO COLECTOR 1" D. 1600 EUROP "
15	* 4404160843	CONJUNTO SAIDA EUROPE D. 110 PARA 1800 - 2000	23	* 4404230106	CJTO. BRAÇO COLECTOR 1" D. 1800 EUROP "
15	* 4404160844	CONJUNTO SAIDA EUROPE D. 125 PARA 1800 - 2000	23	* 4404230108	CJTO. BRAÇO COLECTOR 1" D. 2000 EUROP "
15	* 4404160845	CONJUNTO SAIDA EUROPE D. 140 PARA 1800 - 2000	24	* 4404260418	RACCORD UNIÃO 1"
15	* 4404160846	CONJUNTO SAIDA EUROPE D. 160 PARA 2000	25	* 21512R0423	TUBO SUPORTE DIFUSOR D.90 PARA 1400
16	* 4404260419	BRAÇO COLECTOR 1" 100M "	25	* 21513R0423	TUBO SUPORTE DIFUSOR D.110 PARA 1400
17	* 4404160041	CJTO. DIFUSOR D. 63 - 1050	25	* 21500R0423	TUBO SUPORTE DIFUSOR D.90 PARA 1600
17	* 4404160042	CJTO. DIFUSOR D. 75 - 1050	25	* 21515R0423	TUBO SUPORTE DIFUSOR D.110 PARA 1600
17	* 4404160043	CJTO. DIFUSOR D. 90 - 1050	25	* 21502R0423	TUBO SUPORTE DIFUSOR D.125 PARA 1600
17	* 4404160044	CJTO. DIFUSOR D. 75 - 1200	25	* 21503R0423	TUBO SUPORTE DIFUSOR D.90 PARA 1800
17	* 4404160045	CJTO. DIFUSOR D. 90 - 1200	25	* 21504R0423	TUBO SUPORTE DIFUSOR D.110 PARA 1800
17	* 4404160046	CJTO. DIFUSOR D. 75 - 1400	25	* 21519R0423	TUBO SUPORTE DIFUSOR D.125 PARA 1800
17	* 4404160047	CJTO. DIFUSOR D. 90 - 1400	25	* 21506R0423	TUBO SUPORTE DIFUSOR D.140 PARA 1800
17	* 4404160048	CJTO. DIFUSOR D. 110 - 1400	25	* 21507R0423	TUBO SUPORTE DIFUSOR D.110 PARA 2000
17	* 4404160049	CJTO. DIFUSOR D. 90 - 1600	25	* 21508R0423	TUBO SUPORTE DIFUSOR D.125 PARA 2000
17	* 4404160050	CJTO. DIFUSOR D. 110 - 1600	25	* 21523R0423	TUBO SUPORTE DIFUSOR D.140 PARA 2000
17	* 4404160051	CJTO. DIFUSOR D. 125 - 1600	25	* 21510R0423	TUBO SUPORTE DIFUSOR D.160 PARA 2000
17	* 4404160052	CJTO. DIFUSOR D. 90 - 1800	26	* 20070R0150	PÉ FILTRO D 1050 EUROPE
17	* 4404160053	CJTO. DIFUSOR D. 110 - 1800	26	* 20068R0150	PÉ FILTRO D 1200 EUROPE
17	* 4404160054	CJTO. DIFUSOR D. 125 - 1800	26	* 21511R0150	PÉ D. 1400
17	* 4404160055	CJTO. DIFUSOR D. 140 - 1800	26	* 21514R0150	PÉ FILTRO D 1400 EUROPE
17	* 4404160056	CJTO. DIFUSOR D. 110 - 2000	26	* 21517R0150	PÉ FILTRO D 1800 EUROPE
17	* 4404160057	CJTO. DIFUSOR D. 125 - 2000	26	* 21521R0150	PÉ FILTRO D 2000 EUROPE
17	* 4404160058	CJTO. DIFUSOR D. 140 - 2000			

CODIGO **20068 1", 20069 1", 20070 1", 20071 1", 20072 1", 21497 1", 21498 1", 21499 1", 21500 1", 21501 1", 21502 1", 21503 1", 21504 1", 21505 1", 21506 1", 21507 1", 21508 1", 21509 1", 21510 1"**

DESCRIÇÃO: FILTRO EUROPA (MODELO ANTIGO - BRAÇOS 1") 1M. 2,5 KG. D.1050-1200-1400-1

OBSERVACÕES

POS	CODIGO	OBSERVACÕES
11	4404160811	PARA: 20070 1"
11	4404160812	PARA: 20071 1"
11	4404160813	PARA: 20072 1"
11	4404160830	PARA: 20068 1", 21497 1"
11	4404160831	PARA: 20069 1", 21498 1", 21500 1"
11	4404160814	PARA: 21499 1", 21500 1"
11	4404160815	PARA: 21502 1"
11	4404160832	PARA: 21503 1"
11	4404160833	PARA: 21504 1", 21507 1"
11	4404160834	PARA: 21505 1", 21508 1"
11	4404160816	PARA: 21506 1", 21509 1"
11	4404160817	PARA: 21510 1"
12	4404300916	PARA: 20068 1" [7UT], 20069 1" [7UT], 20070 1" [2UT], 20071 1" [2UT], 20072 1" [2UT], 21497 1" [7UT], 21498 1" [7UT], 21499 1" [7UT], 21500 1" [4UT], 21501 1" [4UT], 21502 1" [4UT], 21503 1" [23UT], 21504 1" [23UT], 21505 1" [23UT], 21506 1" [23UT], 21507 1" [18UT], 21508 1" [18UT], 21509 1" [18UT], 21510 1" [18UT]
12	4404300915	PARA: 20068 1" [8UT], 20069 1" [8UT], 20070 1" [13UT], 20071 1" [13UT], 20072 1" [13UT], 21497 1" [18UT], 21498 1" [18UT], 21499 1" [18UT], 21500 1" [25UT], 21501 1" [25UT], 21502 1" [25UT], 21503 1" [10UT], 21504 1" [10UT], 21505 1" [10UT], 21506 1" [10UT], 21507 1" [15UT], 21508 1" [15UT], 21509 1" [15UT], 21510 1" [15UT]
12	4404300917	PARA: 21497 1" [2UT], 21498 1" [2UT], 21499 1" [2UT], 21500 1" [2UT], 21501 1" [2UT], 21502 1" [2UT], 21503 1" [2UT], 21504 1" [2UT], 21505 1" [2UT], 21506 1" [2UT], 21507 1" [2UT], 21508 1" [2UT], 21509 1" [2UT], 21510 1" [2UT]
15	4404160835	PARA: 20070 1"
15	4404160836	PARA: 20071 1"
15	4404160837	PARA: 20072 1"
15	4404160838	PARA: 20068 1", 21497 1"
15	4404160839	PARA: 20069 1", 21498 1", 21500 1"
15	4404160840	PARA: 21499 1", 21500 1"
15	4404160841	PARA: 21502 1"
15	4404160842	PARA: 21503 1"
15	4404160843	PARA: 21504 1", 21507 1"
15	4404160844	PARA: 21505 1", 21508 1"
15	4404160845	PARA: 21506 1", 21509 1"
15	4404160846	PARA: 21510 1"
16	4404260419	PARA: 20068 1" [6UT], 20069 1" [6UT], 20070 1" [5UT], 20071 1" [5UT], 20072 1" [5UT], 21497 1" [4UT], 21498 1" [4UT], 21499 1" [4UT], 21500 1" [7UT], 21501 1" [7UT], 21502 1" [7UT], 21503 1" [9UT], 21504 1" [9UT], 21505 1" [9UT], 21506 1" [9UT], 21507 1" [16UT], 21508 1" [16UT], 21509 1" [16UT], 21510 1" [16UT]
17	4404160041	PARA: 20070 1"
17	4404160042	PARA: 20071 1"
17	4404160043	PARA: 20072 1"
17	4404160044	PARA: 20068 1"
17	4404160045	PARA: 20069 1"
17	4404160046	PARA: 21497 1"
17	4404160047	PARA: 21498 1"
17	4404160048	PARA: 21499 1"
17	4404160049	PARA: 21500 1"

CODIGO **20068 1", 20069 1", 20070 1", 20071 1", 20072 1", 21497 1", 21498 1", 21499 1", 21500 1", 21501 1", 21502 1", 21503 1", 21504 1", 21505 1", 21506 1", 21507 1", 21508 1", 21509 1", 21510 1"**

DESCRIÇÃO: FILTRO EUROPA (MODELO ANTIGO - BRAÇOS 1") 1M. 2,5 KG. D.1050-1200-1400-1

17	4404160050	PARA: 21501 1"
17	4404160051	PARA: 21502 1"
17	4404160052	PARA: 21503 1"
17	4404160053	PARA: 21504 1"
17	4404160054	PARA: 21505 1"
17	4404160055	PARA: 21506 1"
17	4404160056	PARA: 21507 1"
17	4404160057	PARA: 21508 1"
17	4404160058	PARA: 21509 1"
17	4404160059	PARA: 21510 1"
23	4404301303	PARA: 20070 1", 20071 1", 20072 1"
23	4404200102	PARA: 20068 1", 20069 1"
23	4404200103	PARA: 21497 1", 21498 1", 21499 1"
23	4404210308	PARA: 21500 1", 21501 1", 21502 1"
23	4404230106	PARA: 21503 1", 21504 1", 21505 1", 21506 1"
23	4404230108	PARA: 21507 1", 21508 1", 21509 1", 21510 1"
24	4404260418	PARA: 20068 1" [6UT], 20069 1" [6UT], 20070 1" [5UT], 20071 1" [5UT], 20072 1" [5UT], 21497 1" [4UT], 21498 1" [4UT], 21499 1" [4UT], 21500 1" [7UT], 21501 1" [7UT], 21502 1" [7UT], 21503 1" [9UT], 21504 1" [9UT], 21505 1" [9UT], 21506 1" [9UT], 21507 1" [16UT], 21508 1" [16UT], 21509 1" [16UT], 21510 1" [16UT]
25	21512R0423	PARA: 21498 1"
25	21513R0423	PARA: 21499 1"
25	21500R0423	PARA: 21500 1"
25	21515R0423	PARA: 21501 1"
25	21502R0423	PARA: 21502 1"
25	21503R0423	PARA: 21503 1"
25	21504R0423	PARA: 21504 1"
25	21519R0423	PARA: 21505 1"
25	21506R0423	PARA: 21506 1"
25	21507R0423	PARA: 21507 1"
25	21508R0423	PARA: 21508 1"
25	21523R0423	PARA: 21509 1"
25	21510R0423	PARA: 21510 1"
26	20070R0150	PARA: 20070 1", 20071 1", 20072 1"
26	20068R0150	PARA: 20068 1", 20069 1"
26	21511R0150	PARA: 21497 1", 21498 1", 21499 1"
26	21514R0150	PARA: 21500 1", 21501 1", 21502 1"
26	21517R0150	PARA: 21503 1", 21504 1", 21505 1", 21506 1"
26	21521R0150	PARA: 21508 1", 21509 1"