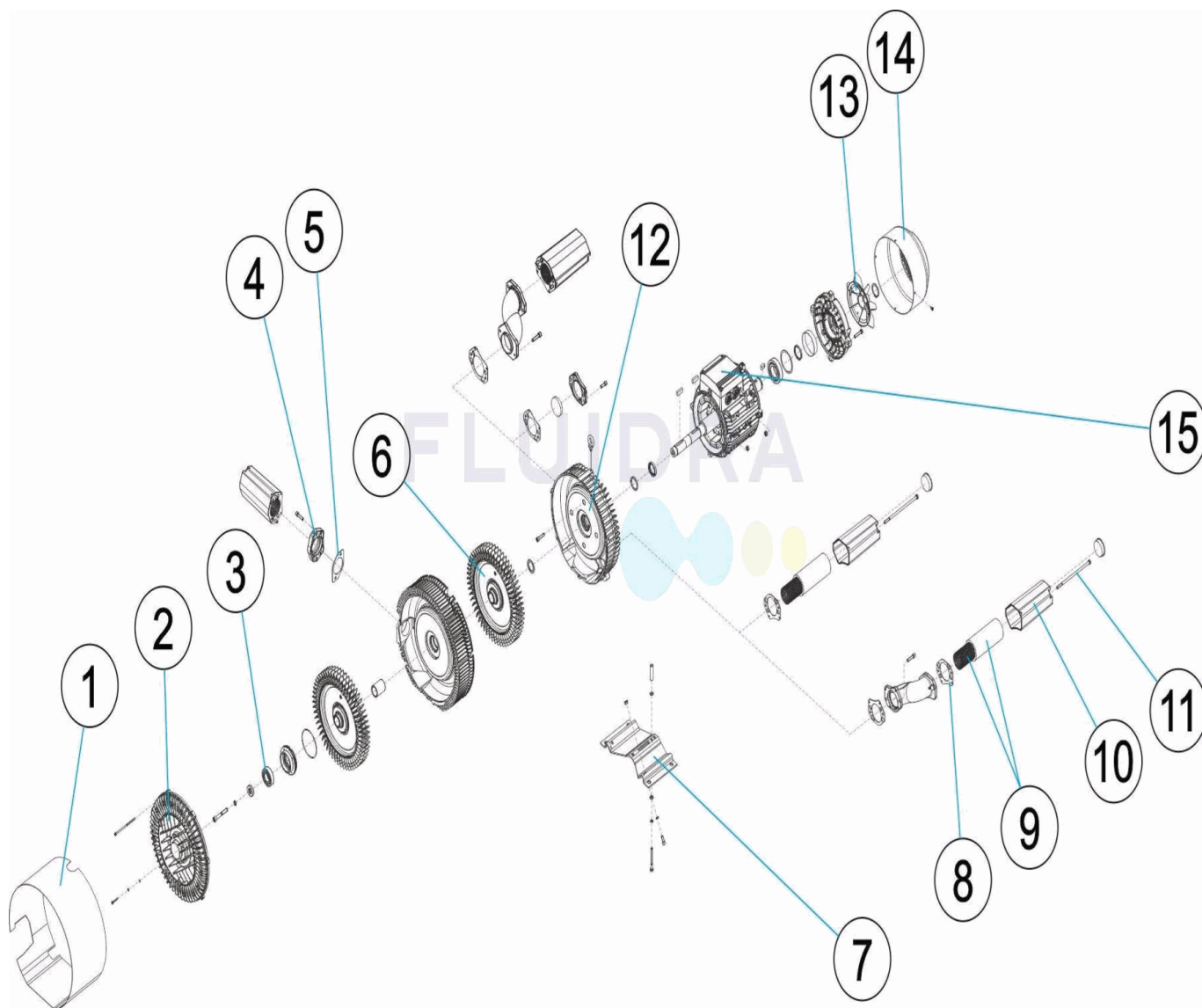
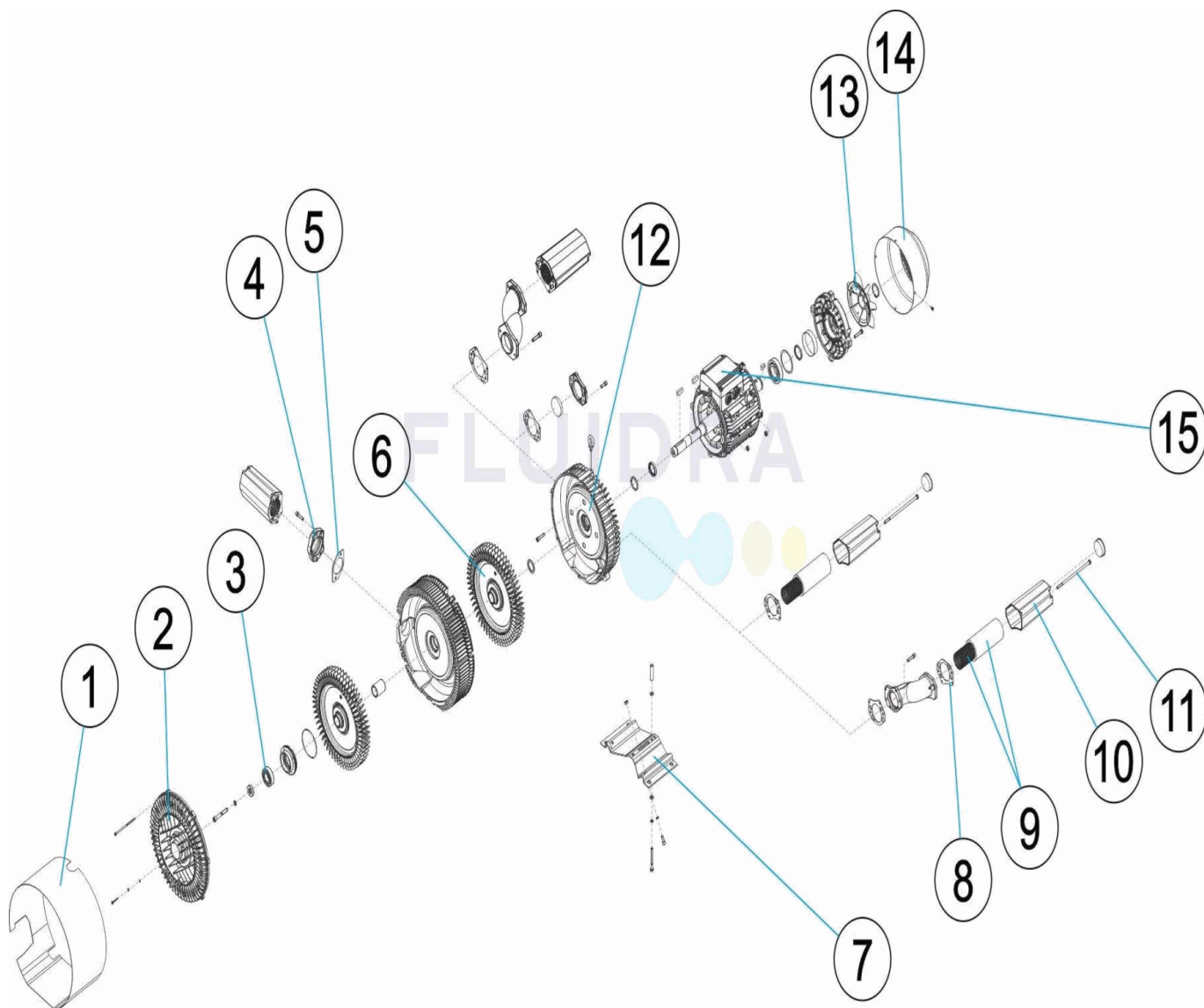


CODIGO **31094-2450**

 DESCRIPCION: **BOMBA SOPLANTE DOBLE ETAPA**

ESPAÑOL

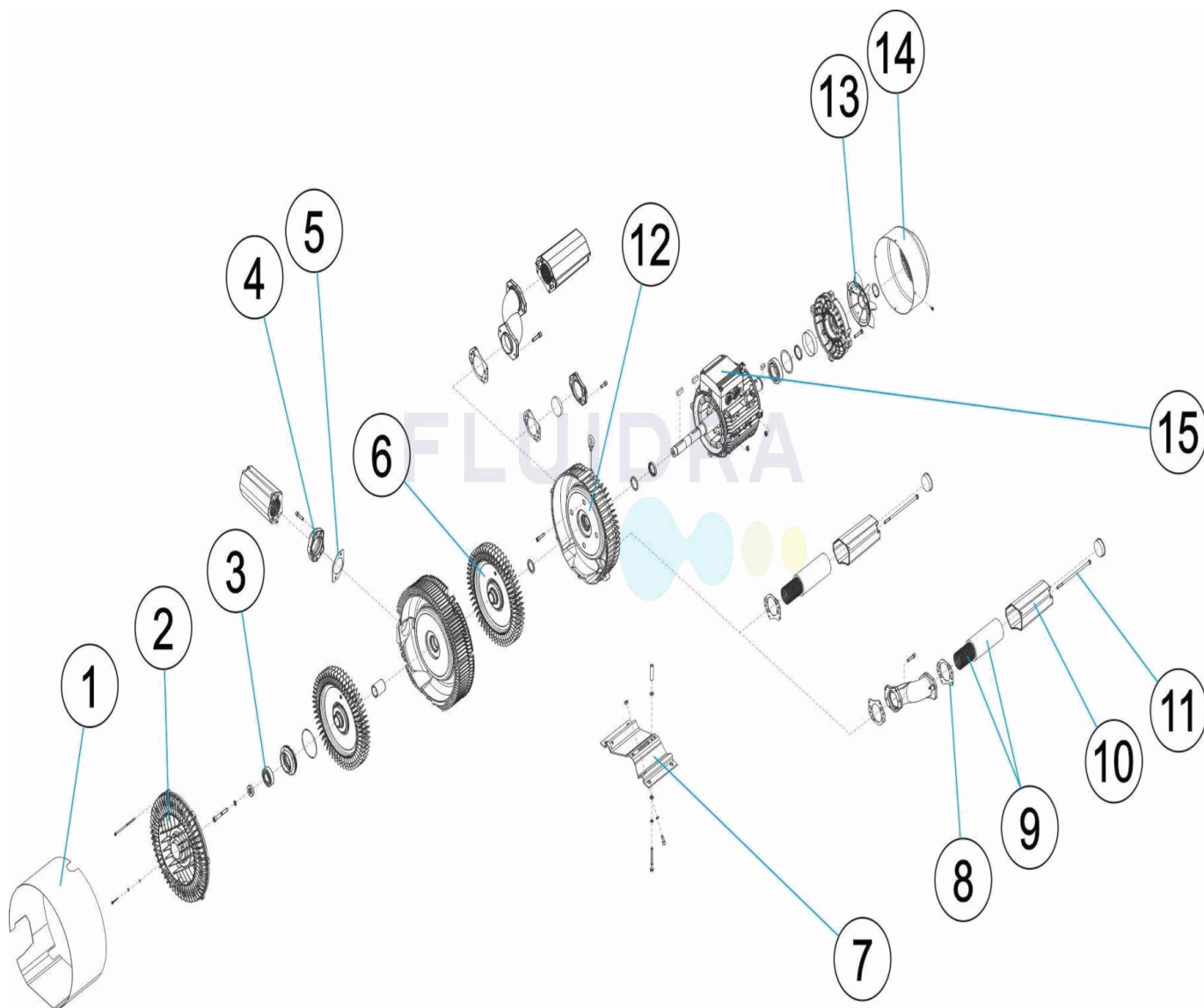
POS	CODIGO	DESCRIPCION	POS	CODIGO	DESCRIPCION
1	31094R0003	TAPA PROTECTORA SOPLANTE	9	4405060001	TUBO SILENCIADOR + ESPUMA 2"
2	31090R0014	TAPA SOPLANTE 1,3 - 1.6 KW.	10	31090R0007	CARCARA SILENCIADOR
3	31090R0000	RODAMIENTO	11	31090R0016	TORN. SUJECCION SILENCIADOR 1,3 - 1.6 KW
4	31093R0001	JUNTA ANCLAJE SILENCIADOR	12	31094R0001	CUERPO SOPLANTE 3 KW
5	31094R0002	ANCLAJE SILENCIADOR 2"	13	31095R0003	VENTILADOR 3 KW
6	31091R0002	RODETE SOPLANTE HSC0210	14	31095R0002	TAPA VENTILADOR 3 KW
7	31090R0015	BASE SOPLANTE 1,3 - 1.6 KW.	15	31094R0004	PLACA DE BORNES
8	31090R0001	JUNTA SILENCIADOR			

CODE **31094-2450**

 DESCRIPTION: **POMPE SOUFLANTE DOUBLE ÉTAPE**

FRANCAIS

POS	CODE	DESCRIPTION	POS	CODE	DESCRIPTION
1	31094R0003	CARÉNAGE SOUFLANT	9	4405060001	TUBE SILENCIEUX + MOUSSE 2"
2	31090R0014	COUVERCLE SOUFLANTE 1,3 - 1.6 KW.	10	31090R0007	CARCASSE SILENCIEUX
3	31090R0000	ROULEMENT	11	31090R0016	VIS FIXATION SILENCIEUX 1,3 - 1.6 KW
4	31093R0001	JOINT FIXATION SILENCIEUX	12	31094R0001	CORPS SOUFLANTE 3 KW
5	31094R0002	FIXATION SILENCIEUX 2"	13	31095R0003	VENTILATEUR 3 KW
6	31091R0002	ROUE SOUFLANTE HSC0210	14	31095R0002	COUVERCLE VENTILATEUR 3 KW
7	31090R0015	BASE SOUFLANTE 1,3 - 1.6 KW.	15	31094R0004	PLAQUE À BORNES
8	31090R0001	JOINT SILENCIEUX			

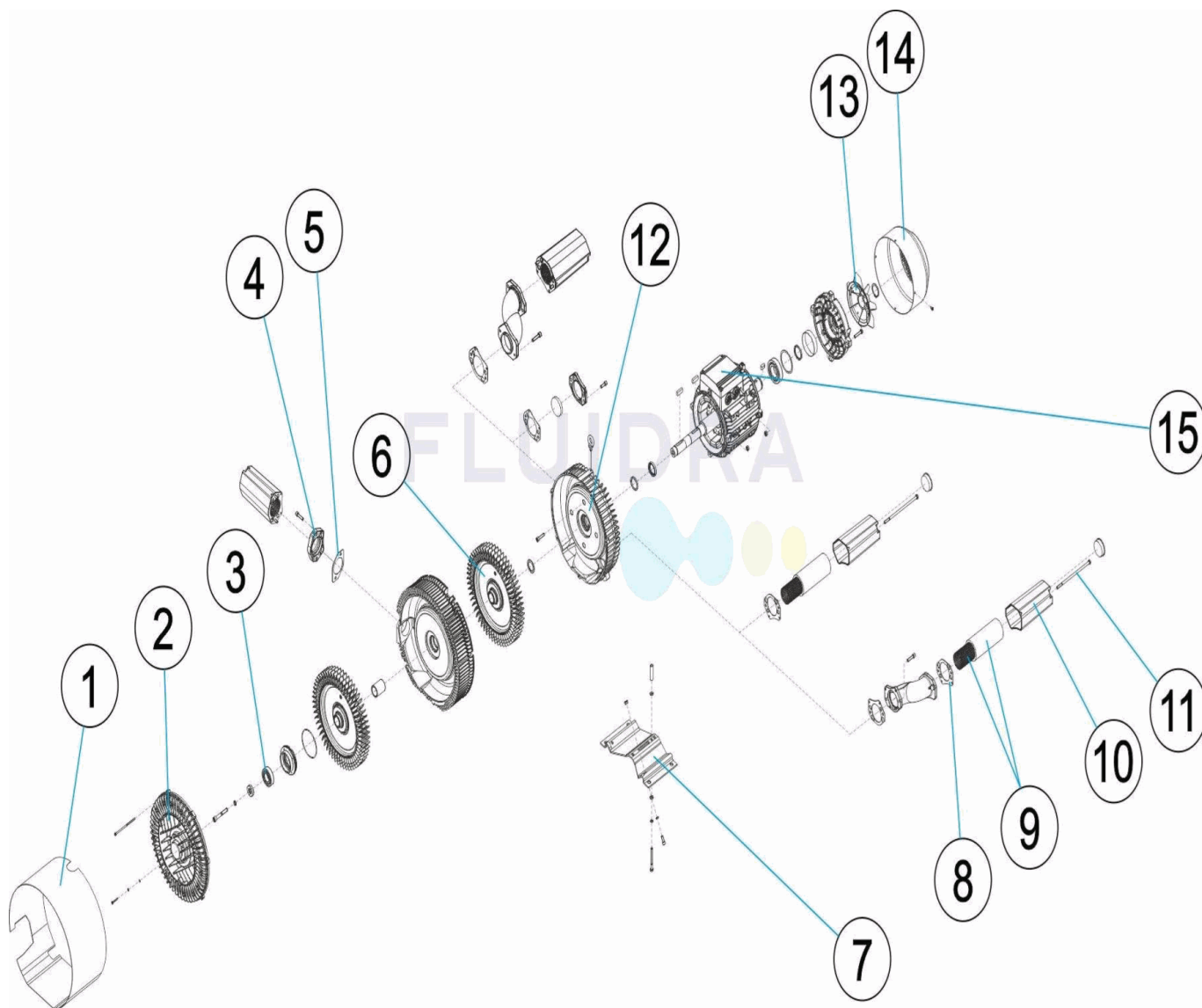
CODE **31094-2450**

 DESCRIPTION: **DOUBLE STAGE BLOWER PUMP**


ENGLISH

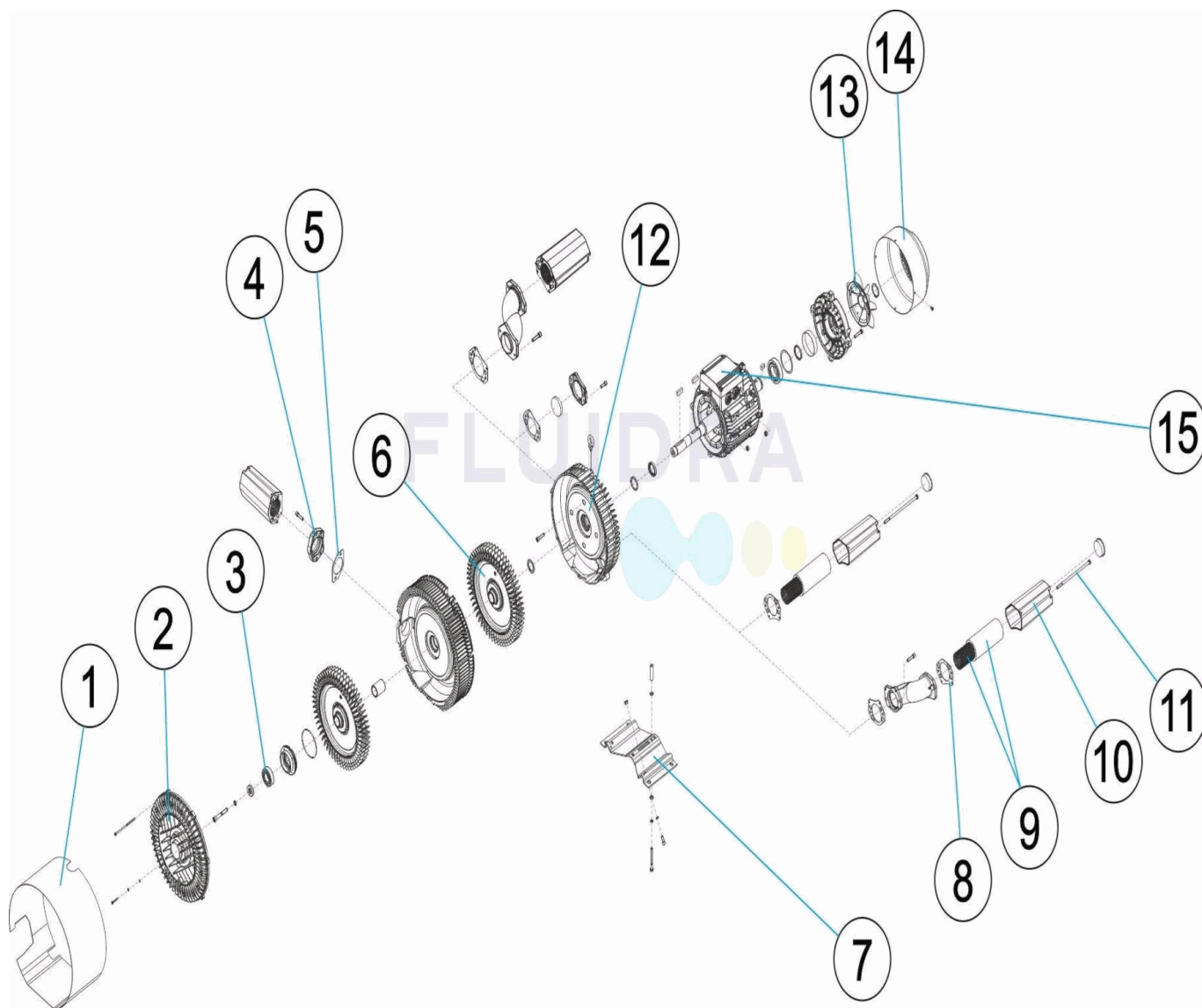
POS	CODE	DESCRIPTION	POS	CODE	DESCRIPTION
1	31094R0003	BLOWER COWL COVER	9	4405060001	SILENCER TUBE + FOAM 2"
2	31090R0014	BLOWER COVER 1,3 - 1.6 KW.	10	31090R0007	SILENCER BODY
3	31090R0000	BEARING	11	31090R0016	SILENCER SECURING SCREW 1,3 - 1.6 KW
4	31093R0001	SILENCER FITTING GASKET	12	31094R0001	BLOWER BODY 3 KW
5	31094R0002	SILENCER FITTING 2"	13	31095R0003	FAN 3 KW
6	31091R0002	BLOWER IMPELLER HSC0210	14	31095R0002	FAN COVER 3 KW
7	31090R0015	BLOWER BASE 1,3 - 1.6 KW.	15	31094R0004	TERMINAL PLATE
8	31090R0001	SILENCER GASKET			

CODICE **31094-2450**

 DESCRIZIONE: **POMPA SOFFIANTE FASE DOPPIA**

ITALIANO

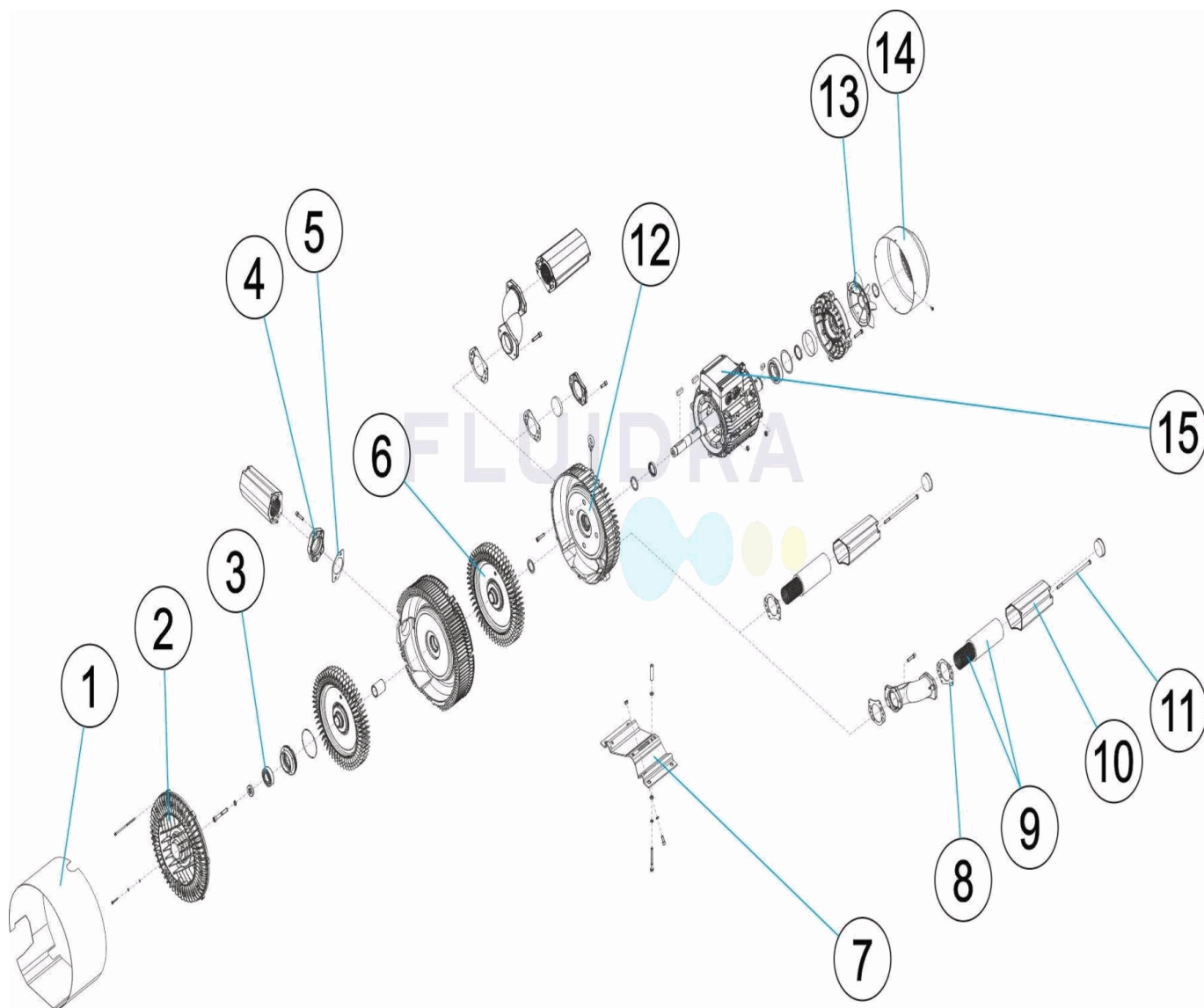
POS	CODICE	DESCRIZIONE	POS	CODICE	DESCRIZIONE
1	31094R0003	COPERTURA PROTETTIVA SOFFIANTE	9	4405060001	TUBO SILENZIATORE + SCHIUMA 2"
2	31090R0014	COPERCHIO DELLA POMPA SOFFIANTE 1,3 - 1.6 KV	10	31090R0007	SCATOLA SILENZIATORE
3	31090R0000	CUSCINETTO	11	31090R0016	VITE DI FISSAGGIO SILENZIATORE 1,3 - 1.6 KW
4	31093R0001	GIUNTURA DI ANCORAGGIO SILENZIATORE	12	31094R0001	CORPO DELLA POMPA SOFFIANTE 3 KW
5	31094R0002	ANCORAGGIO SILENZIATORE 2"	13	31095R0003	VENTILATORE 3 KW
6	31091R0002	GIRANTE DELLA POMPA SOFFIANTE HSC0210	14	31095R0002	COPERCHIO VENTILATORE 3 KW
7	31090R0015	BASE DELLA POMPA SOFFIANTE 1,3 - 1.6 KW.	15	31094R0004	MORSETTIERA ELETTRICA
8	31090R0001	GIUNTURA SILENZIATORE			

CODE **31094-2450**

 BESCHREIBUNG: **ZWEISTUFIGE GEBLÄSEPUMPE**

DEUTSCH

POS	CODE	BESCHREIBUNG	POS	CODE	BESCHREIBUNG
1	31094R0003	SCHUTZABDECKUNG GEBLÄSE	9	4405060001	ROHR SCHWINGUNGSDÄMPFER + SCHAUMSTOFI
2	31090R0014	ABDECKUNG GEBLÄSE 1,3 - 1,6 KW	10	31090R0007	GEHÄUSE SCHWINGUNGSDÄMPFER
3	31090R0000	WÄLZLAGER	11	31090R0016	BEFESTIGUNGSSCHRAUBE SCHWINGUNGSDÄMP
4	31093R0001	DICHTUNG VERANKERUNG SCHWINGUNGSDÄMPF	12	31094R0001	GEBLÄSEGEHÄUSE 3 KW
5	31094R0002	VERANKERUNG SCHWINGUNGSDÄMPFER 2"	13	31095R0003	VENTILATOR 3 KW
6	31091R0002	GEBLÄSELAUFRAD HSC0210	14	31095R0002	VENTILATORDECKEL 3 KW
7	31090R0015	GEBLÄSEBASIS 1,3 - 1,6 KW	15	31094R0004	ANSCHLUSSPLATTE
8	31090R0001	DICHTUNG SCHWINGUNGSDÄMPFER			

CODIGO **31094-2450**

 DESCRIÇÃO: **BOMBA DE VÁCUO ETAPA DUPLA**

PORTUGUES

POS	CODIGO	DESCRIÇÃO	POS	CODIGO	DESCRIÇÃO
1	31094R0003	TAMPA DE PROTEÇÃO SOPRADOR	9	4405060001	TUBO SILENCIADOR + ESPUMA 2"
2	31090R0014	TAMPA BOMBA DE VÁCUO 1,3 - 1.6 KW.	10	31090R0007	CARCAÇA SILENCIADOR
3	31090R0000	CUSCINETTO	11	31090R0016	PARAFUSO FIXAÇÃO SILENCIADOR, 1,3 - 1.6 KW
4	31093R0001	JUNTA ANCORAGEM SILENCIADOR	12	31094R0001	CORPO BOMBA DE VÁCUO 3 KW
5	31094R0002	JUNTA ANCORAGEM SILENCIADOR 2"	13	31095R0003	VENTILADOR 3 KW
6	31091R0002	ROLETE BOMBA DE VÁCUO HSC0210	14	31095R0002	TAMPA VENTILADOR 3 KW
7	31090R0015	BASE BOMBA DE VÁCUO 1,3 - 1.6 KW.	15	31094R0004	PLACA DE TERMINAIS
8	31090R0001	JUNTA SILENCIADOR			