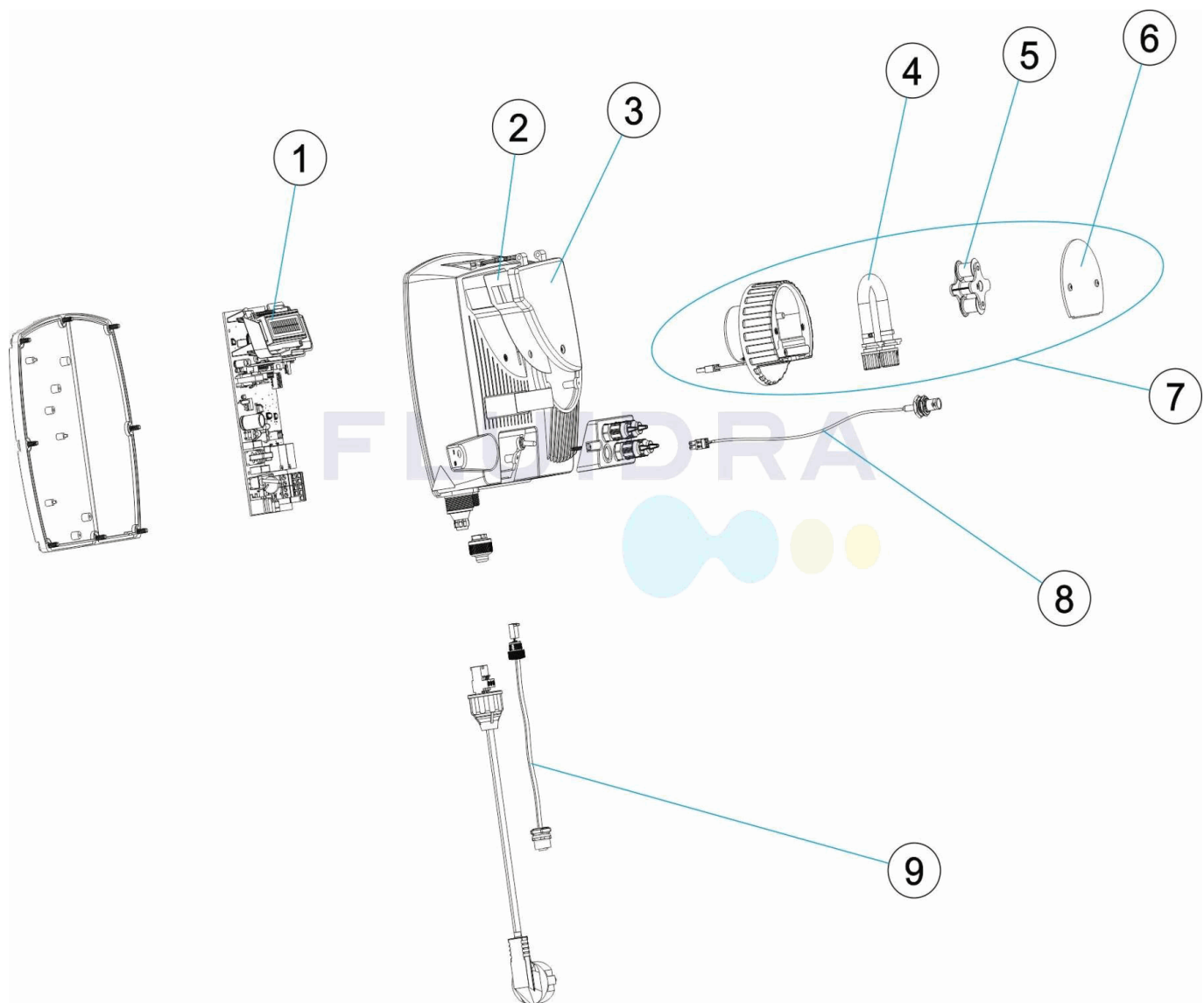


CODIGO **57129, 57130, 66159, 66160**

 DESCRIPCION: **CONTROL BASIC 1,5 L/H 5 L/H**

**ESPAÑOL**

POS	CODIGO	DESCRIPCION	POS	CODIGO	DESCRIPCION
1	* 36002R0001	CIRCUITO ELECTRONICO	6	36002R0005	TAPA FRONTAL CABEZAL
1	* 66159R0001	CIRCUITO DIGITAL CONNECT	7	* 57129R0006	CJTO. CABEZAL PERISTALTICA 1,5 L/H.
2	36002R0002	TECLADO	7	* 57130R0006	CJTO. CABEZAL PERISTALTICA 5 L/H.
3	36002R0003	TAPA FRONTAL	8	57129R0007	CABLE COAXIAL RG174A/U 20CM
4	57129R0004	TUBO PERISTALTICO	9	* 66159R0009	CABLE L=35CM
5	57129R0005	PORTA-RODILLOS			

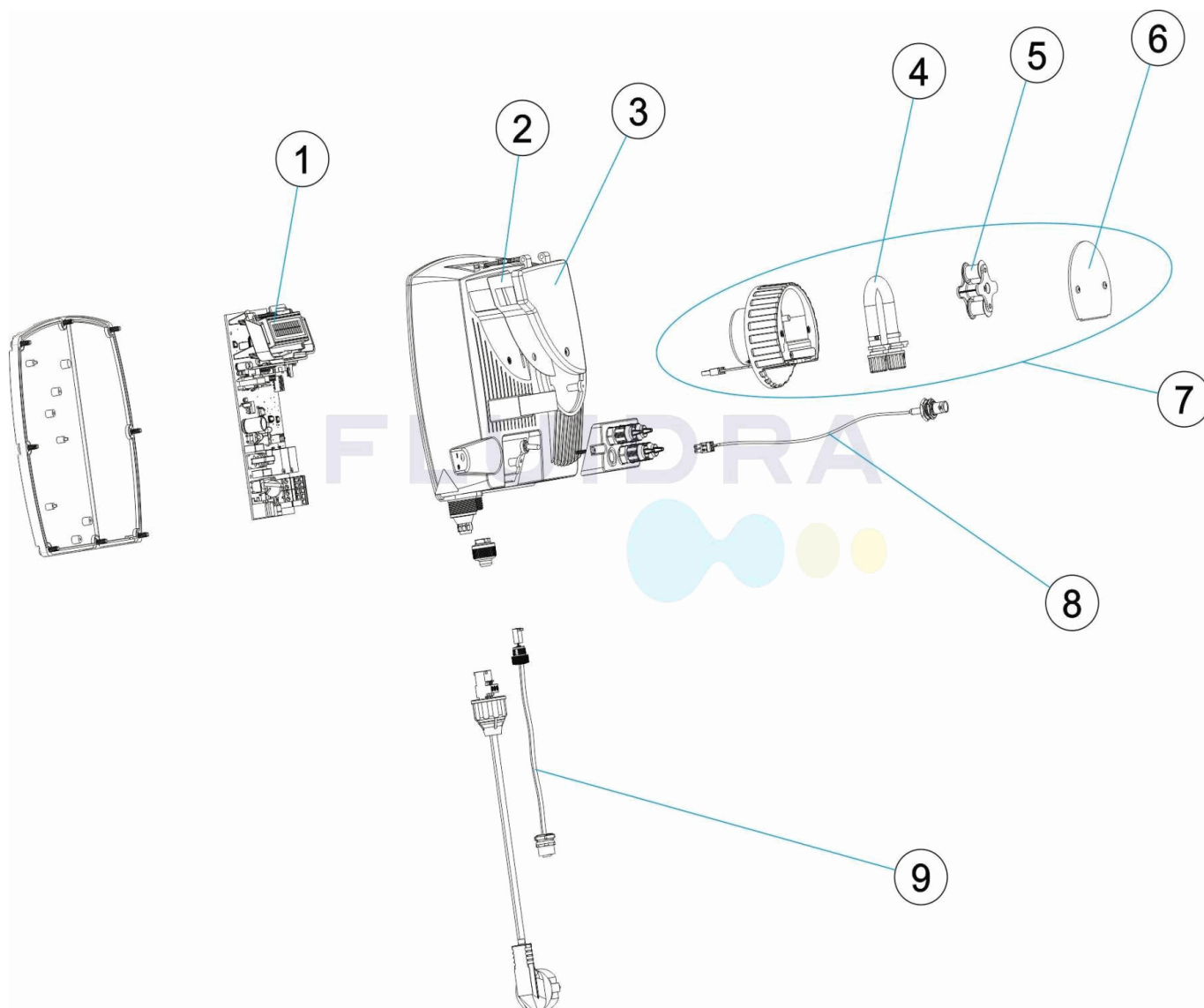
CODIGO **57129, 57130, 66159, 66160**

DESCRIPCION: **CONTROL BASIC 1,5 L/H 5 L/H**

## OBSERVACIONES

POS	CODIGO	OBSERVACIONES
1	36002R0001	PARA: 57129, 57130
1	66159R0001	PARA: 66159, 66160
7	57129R0006	PARA: 57129, 66159
7	57130R0006	PARA: 57130, 66160
9	66159R0009	PARA: 66159, 66160

CODE **57129, 57130, 66159, 66160**

 DESCRIPTION: **CONTRÔLE BASIC 1,5 L/H 5 L/H**

**FRANCAIS**

POS	CODE	DESCRIPTION	POS	CODE	DESCRIPTION
1	* 36002R0001	CIRCUIT ELECTRONIQUE	6	36002R0005	COUVERCLE FRONTAL TETE
1	* 66159R0001	CIRCUIT DIGITAL CONNECT	7	* 57129R0006	ENSEMBLE TETE PERISTALTIQUE 1,5L/H
2	36002R0002	CLAVIER	7	* 57130R0006	ENSEMBLE TETE PERISTALTIQUE 5L/H
3	36002R0003	COUVERCLE FRONTAL	8	57129R0007	CABLE COAXIAL RG174A/U 20CM
4	57129R0004	TUBE PÉRISTALTIQUE	9	* 66159R0009	CABLE L=35CM
5	57129R0005	SUPPORT GALETS			

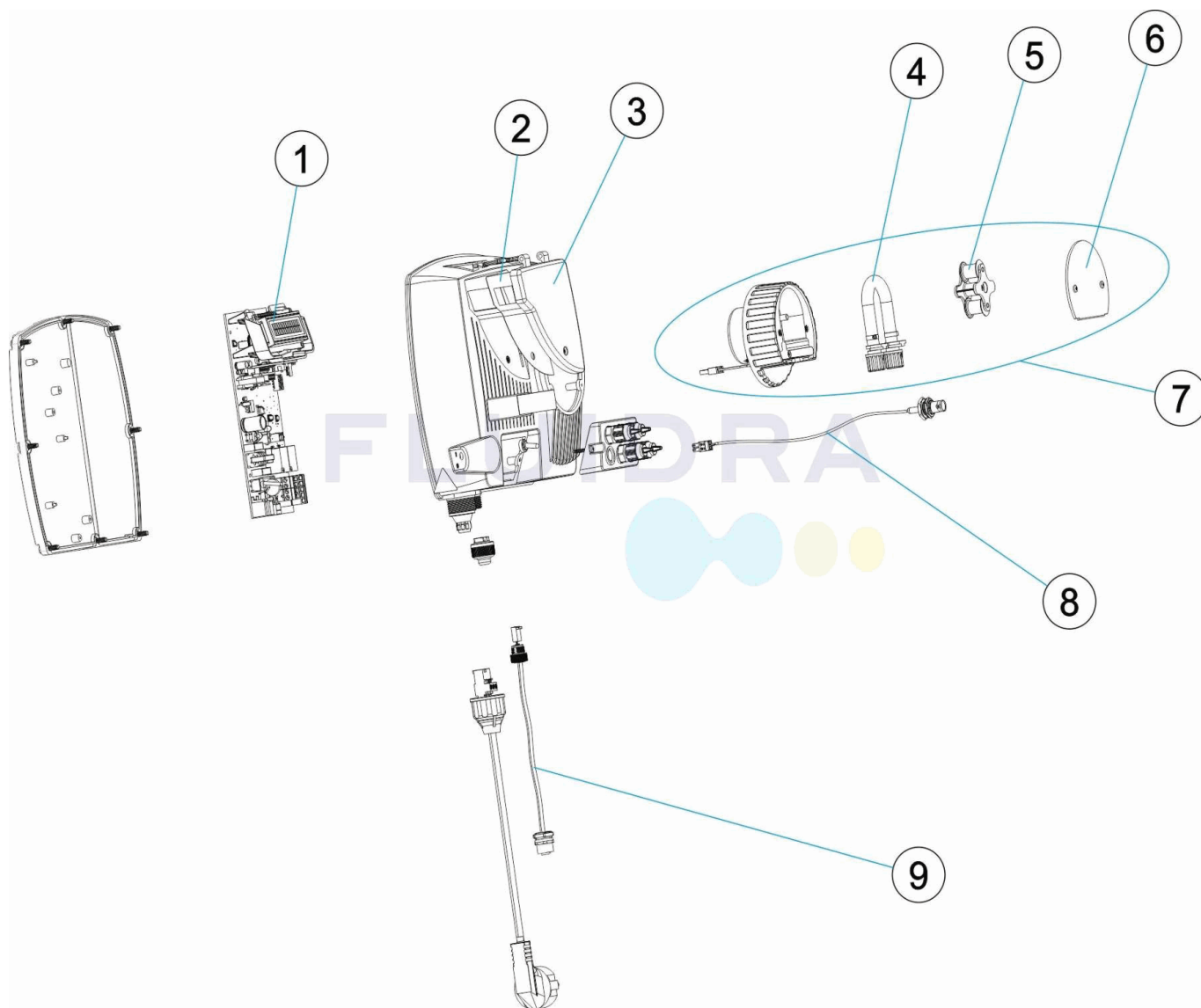
CODE **57129, 57130, 66159, 66160**

DESCRIPTION: **CONTRÔLE BASIC 1,5 L/H 5 L/H**

## OBSERVATIONS

POS	CODE	OBSERVATIONS
1	36002R0001	POUR: 57129, 57130
1	66159R0001	POUR: 66159, 66160
7	57129R0006	POUR: 57129, 66159
7	57130R0006	POUR: 57130, 66160
9	66159R0009	POUR: 66159, 66160

CODE **57129, 57130, 66159, 66160**

 DESCRIPTION: **CONTROL BASIC 1.5 L/H 5 L/H**


## ENGLISH

POS	CODE	DESCRIPTION	POS	CODE	DESCRIPTION
1	* 36002R0001	ELECTRONIC CIRCUIT	6	36002R0005	HEAD FRONT COVER
1	* 66159R0001	CONNECT DIGITAL CIRCUIT	7	* 57129R0006	1,5 L/H PERISTALTIC HEAD KIT
2	36002R0002	KEYPAD	7	* 57130R0006	5 L/H PERISTALTIC HEAD KIT
3	36002R0003	FRONT COVER	8	57129R0007	COAXIAL CABLE RG174A/U 20CM
4	57129R0004	PERISTALTIC TUBE	9	* 66159R0009	CABLE L=35CM
5	57129R0005	COMPLETE ROLLER HOLDER			

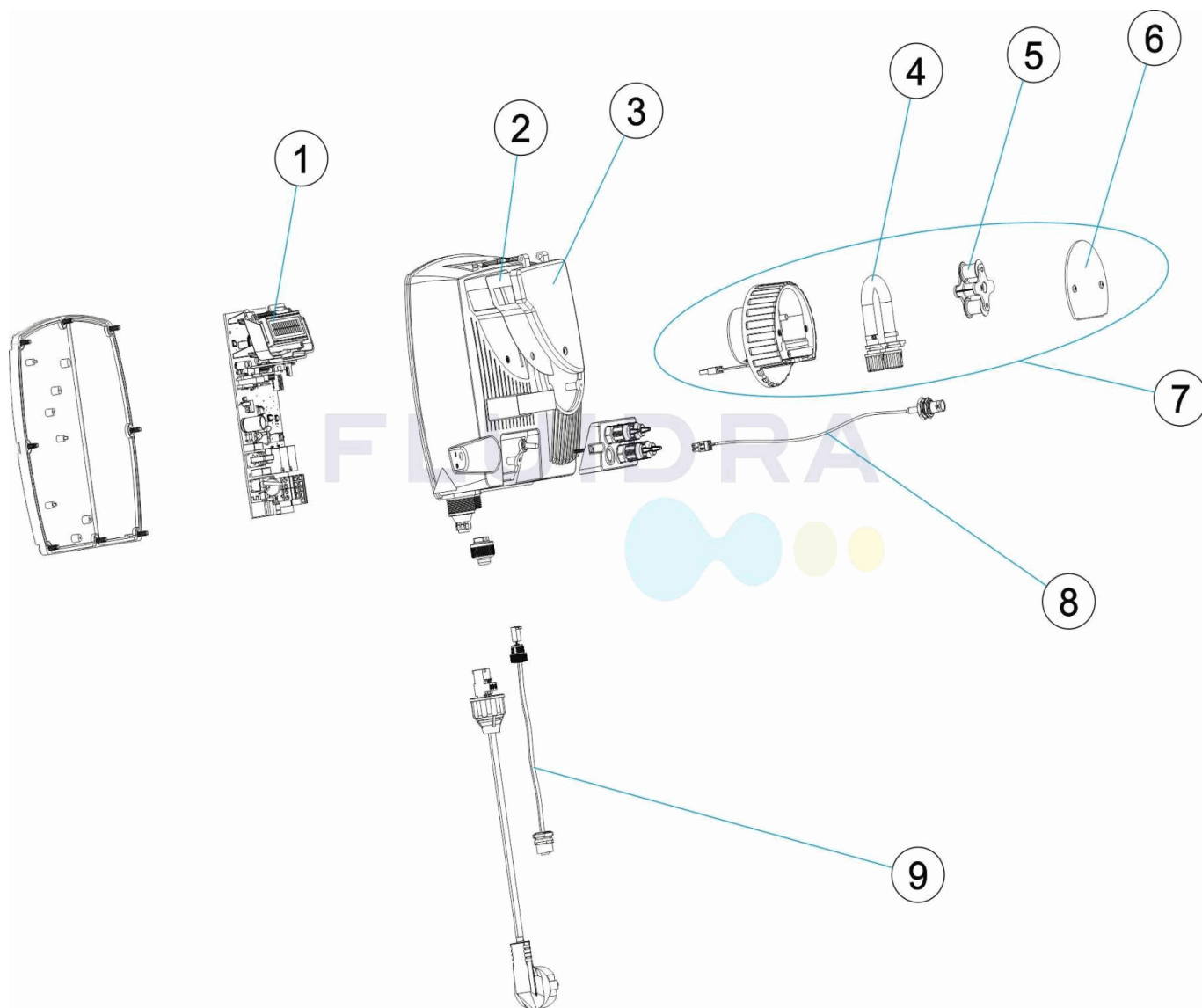
CODE **57129, 57130, 66159, 66160**

DESCRIPTION: **CONTROL BASIC 1.5 L/H 5 L/H**

## OBSERVATIONS

POS	CODE	OBSERVATIONS
1	36002R0001	FOR: 57129, 57130
1	66159R0001	FOR: 66159, 66160
7	57129R0006	FOR: 57129, 66159
7	57130R0006	FOR: 57130, 66160
9	66159R0009	FOR: 66159, 66160

CODICE **57129, 57130, 66159, 66160**

 DESCRIZIONE: **CONTROL BASIC 1,5 L/H 5 L/H**

**ITALIANO**

POS	CODICE	DESCRIZIONE	POS	CODICE	DESCRIZIONE
1	* 36002R0001	CIRCUITO ELETTRONICO	6	36002R0005	COPERCHIO FRONTALE
1	* 66159R0001	CIRCUITO DIGITALE CONNECT	7	* 57129R0006	KIT TESTA POMPA 1,5 L/H
2	36002R0002	PULSANTIERA	7	* 57130R0006	KIT TESTA POMPA 5 L/H
3	36002R0003	COPERCHIO FRONTALE	8	57129R0007	CAVO COASSIALE RG174A/U 20CM
4	57129R0004	TUBO PERISTALTICO	9	* 66159R0009	CAVO L=35CM
5	57129R0005	PORTA RULLO			

CODICE **57129, 57130, 66159, 66160**

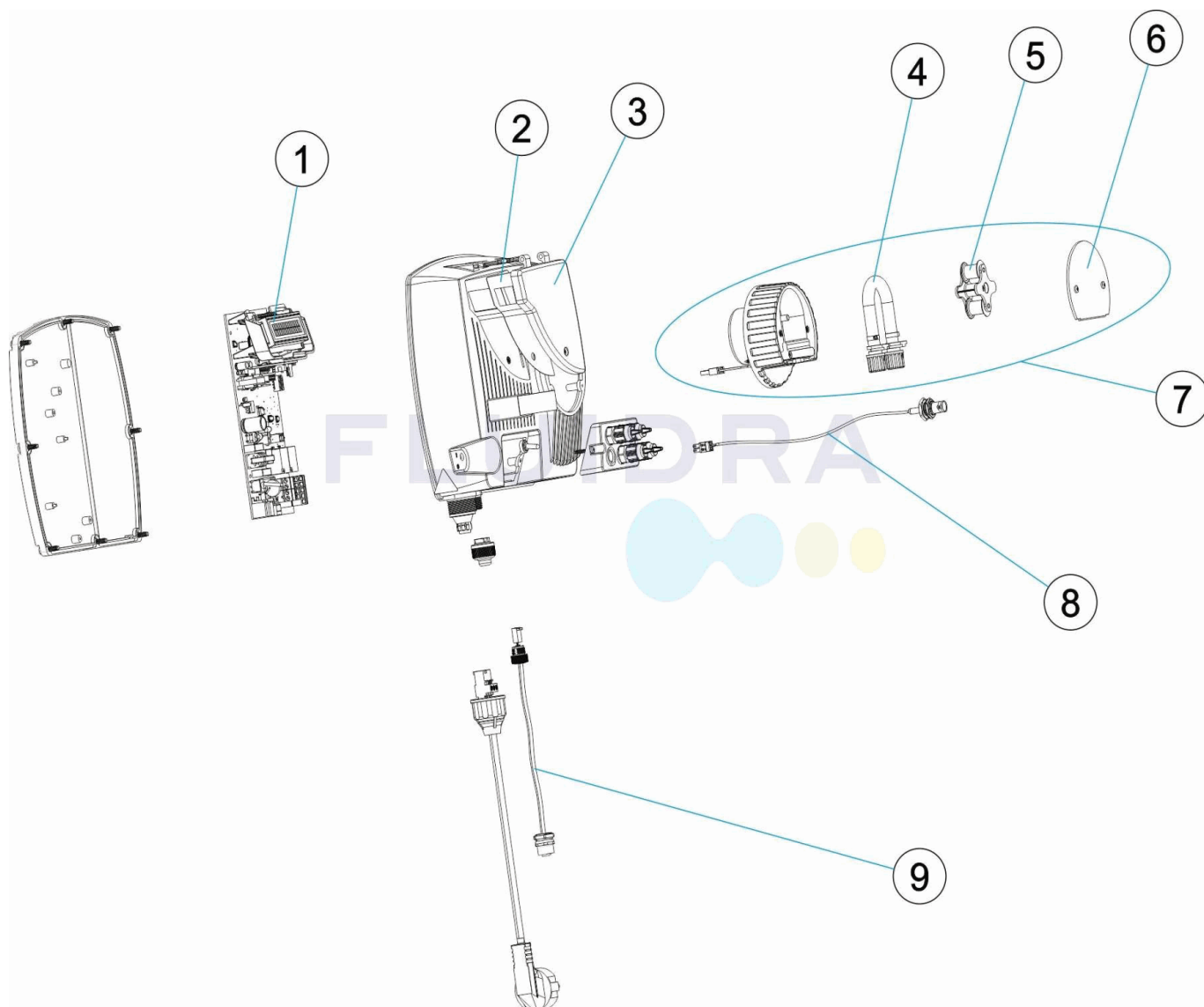
DESCRIZIONE: **CONTROL BASIC 1,5 L/H 5 L/H**

## OSSERVAZIONI

POS	CODICE	OSSERVAZIONI
1	36002R0001	PER: 57129, 57130
1	66159R0001	PER: 66159, 66160
7	57129R0006	PER: 57129, 66159
7	57130R0006	PER: 57130, 66160
9	66159R0009	PER: 66159, 66160



CODE **57129, 57130, 66159, 66160**

 BESCHREIBUNG: **STEUERUNG BASIC 1,5 L/H 5 L/H**

**DEUTSCH**

POS	CODE	BESCHREIBUNG	POS	CODE	BESCHREIBUNG
1	* 36002R0001	PLATINE SCHALTKREIS	6	36002R0005	FRONTDECKEL KOPFSTÜCK
1	* 66159R0001	DIGITALER SCHALTKREIS CONNECT	7	* 57129R0006	SET KOPFSTÜCK PERISTALTIKPUMPE 1,5 L/H
2	36002R0002	TASTATUR	7	* 57130R0006	SET KOPFSTÜCK PERISTALTIKPUMPE 5 L/H
3	36002R0003	FRONTDECKEL	8	57129R0007	KOAXIALKABEL RG174A/U 20CM
4	57129R0004	PERISTALTIKSCHLAUCH	9	* 66159R0009	KABEL L=35CM
5	57129R0005	ROLLENTÄGER			

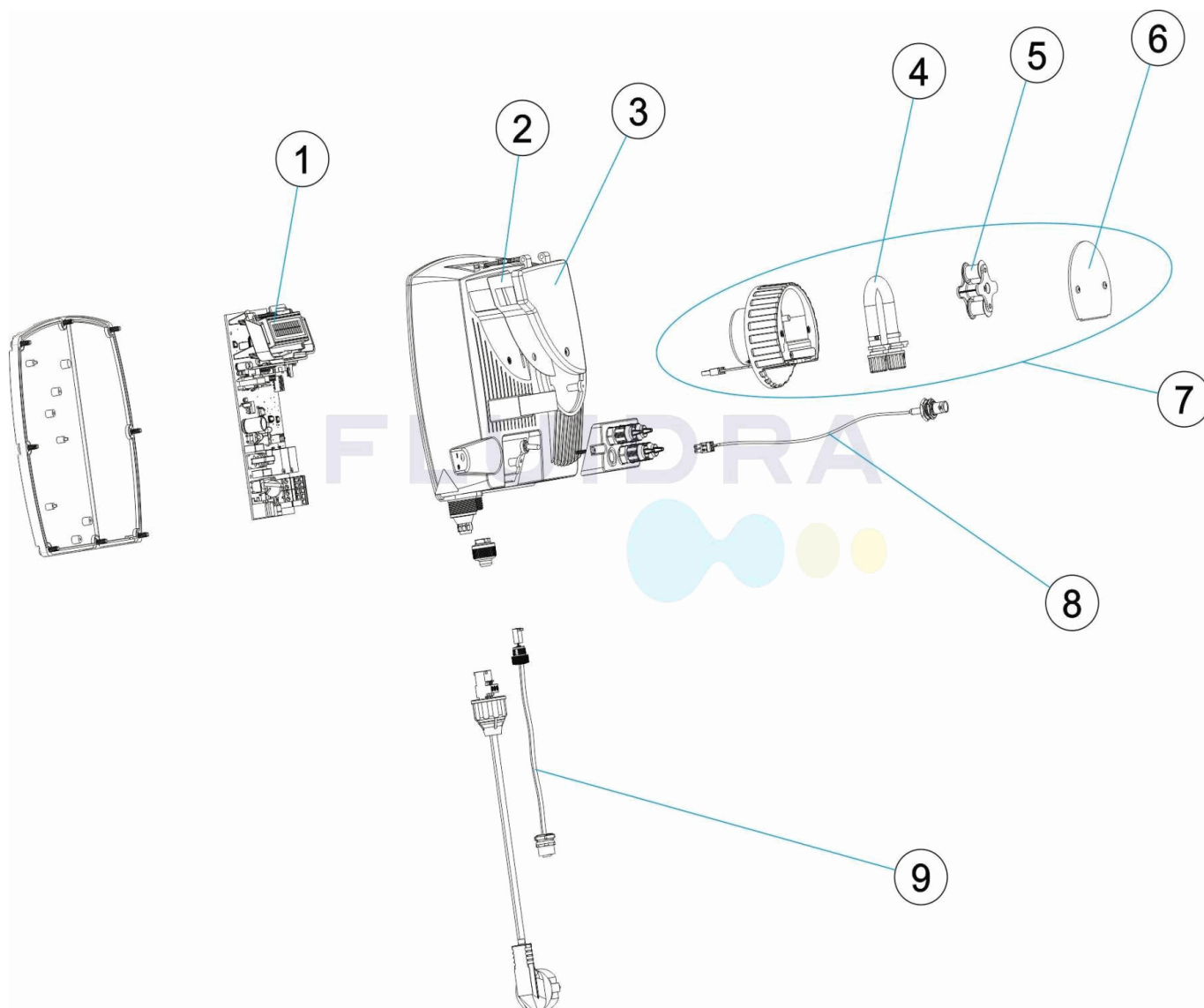
CODE **57129, 57130, 66159, 66160**

BESCHREIBUNG: **STEUERUNG BASIC 1,5 L/H 5 L/H**

## HINWEISE

POS	CODE	HINWEISE
1	36002R0001	FÜR: 57129, 57130
1	66159R0001	FÜR: 66159, 66160
7	57129R0006	FÜR: 57129, 66159
7	57130R0006	FÜR: 57130, 66160
9	66159R0009	FÜR: 66159, 66160

CODIGO **57129, 57130, 66159, 66160**

 DESCRIÇÃO: **CONTROL BASIC 1,5 L/H 5 L/H**

**PORTUGUES**

POS	CODIGO	DESCRIÇÃO	POS	CODIGO	DESCRIÇÃO
1	* 36002R0001	CIRCUITO ELECTRONICO	6	36002R0005	TAMPA FRONTAL CABEÇAL
1	* 66159R0001	CIRCUITO DIGITAL CONNECT	7	* 57129R0006	CONJ.CABEÇAL PERISTALTICA 1,5 L/H
2	36002R0002	TECLADO	7	* 57130R0006	CONJ.CABEÇAL PERISTALTICA 5 L/H
3	36002R0003	TAMPA FRONTAL	8	57129R0007	CABO COAXIAL RG174A/U 20CM
4	57129R0004	TUBO PERISTÁLTICO	9	* 66159R0009	CABO L=35CM
5	57129R0005	PORTA-RODÍZIOS			

CODIGO **57129, 57130, 66159, 66160**

DESCRIÇÃO: **CONTROL BASIC 1,5 L/H 5 L/H**

## OBSERVACÕES

POS	CODIGO	OBSERVACÕES
1	36002R0001	PARA: 57129, 57130
1	66159R0001	PARA: 66159, 66160
7	57129R0006	PARA: 57129, 66159
7	57130R0006	PARA: 57130, 66160
9	66159R0009	PARA: 66159, 66160