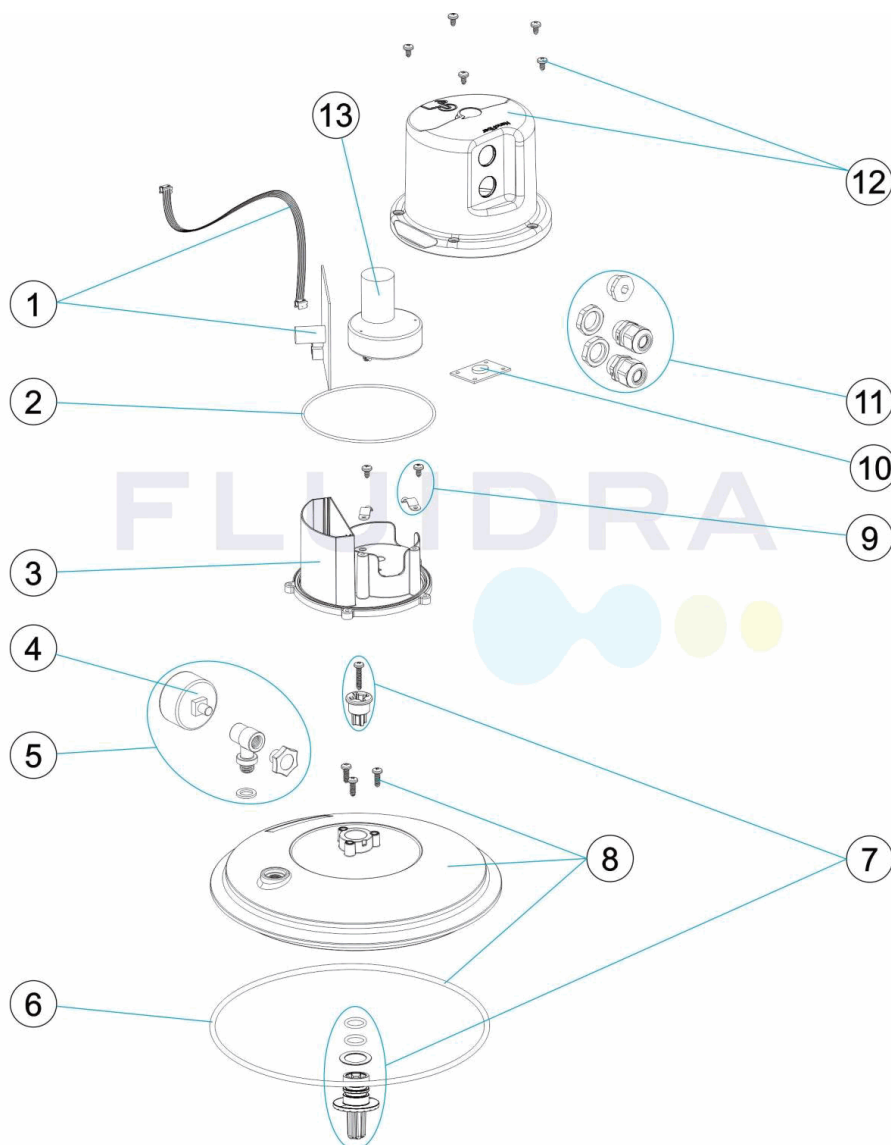


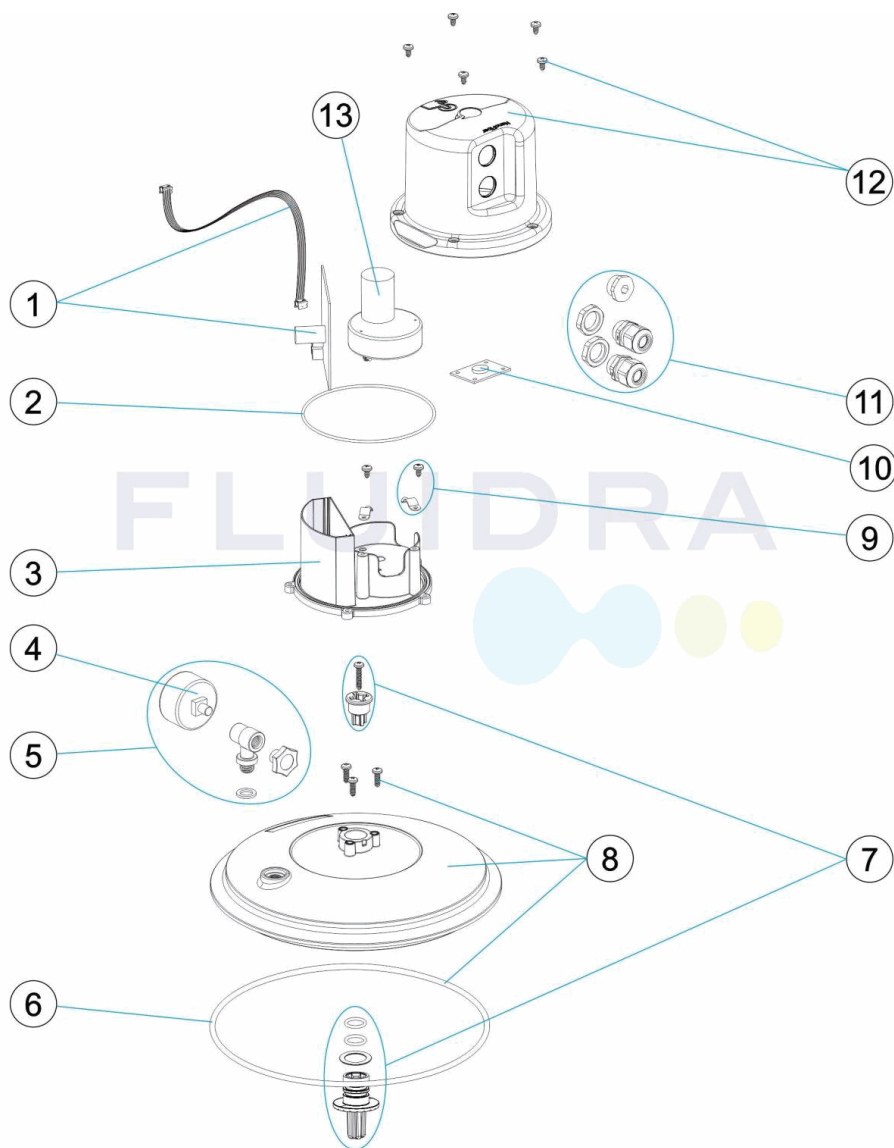
CODE **67509**

 DESCRIPTION: **NANOFIBER AUTO KIT**


ENGLISH

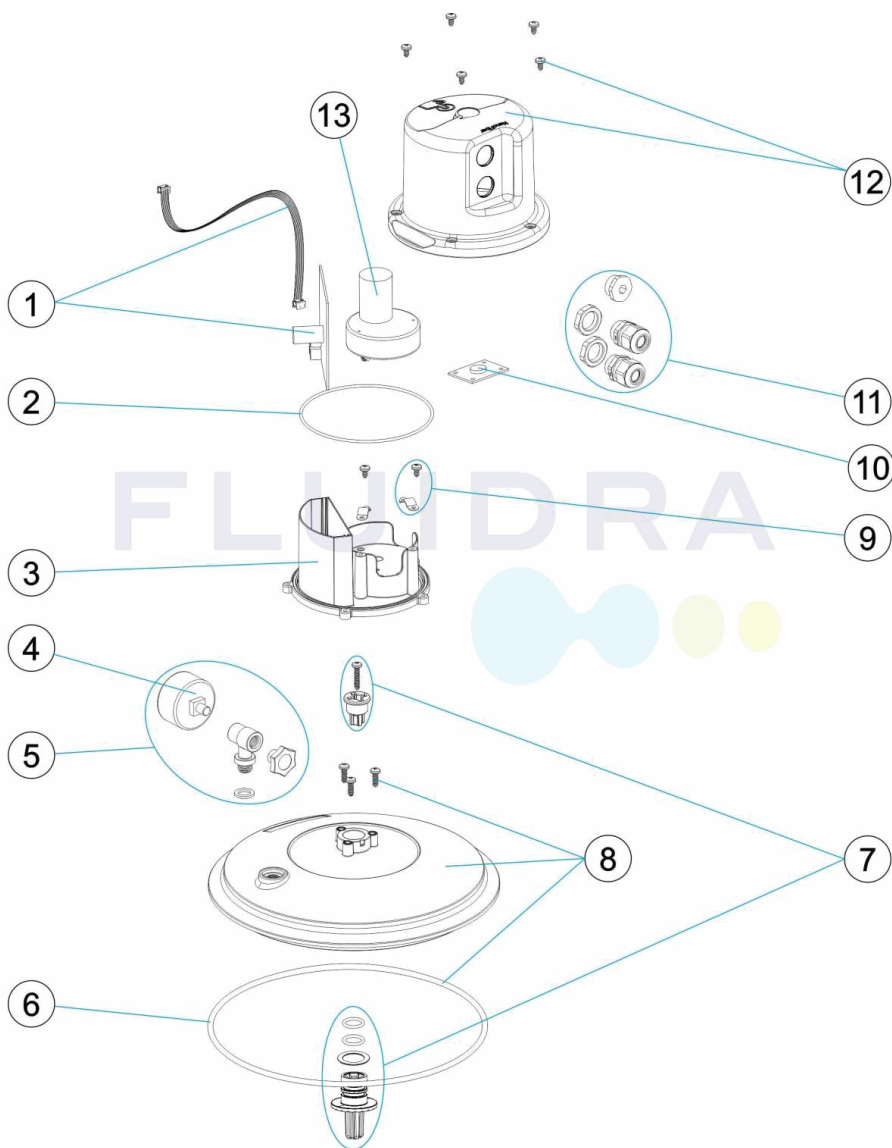
POS	CODE	DESCRIPTION	POS	CODE	DESCRIPTION
1	4404130016	ELECTRONIC CARD	8	4404130014	TOP COVER + GASKET
2	4404130017	O' RING 121X2,5	9	4404130019	CLIP + SCREWS
3	4404130018	MOTOR SUPPORT	10	4404130020	ELECTRONIC USER CARD
4	4404010103	PRESSURE GAUGE 1/8" 3 KG./C "	11	4404130022	GLAND ASSEMBLY
5	4404010104	FITTING 1 1/2" + O'RIN "	12	4404130021	UPPER COVER
6	4404130002	LID GASKET	13	4404130023	GEARED MOTOR
7	4404130015	NANOFIBER HAND WHEEL			

CODICE **67509**

 DESCRIZIONE: **KIT NANOFIBER AUTO**

ITALIANO

POS	CODICE	DESCRIZIONE	POS	CODICE	DESCRIZIONE
1	4404130016	SCHEDA	8	4404130014	COPERCHIO SUPERIORE + GUARNIZIONE
2	4404130017	O-RING 121X2,5	9	4404130019	CLIP + VITES
3	4404130018	SUPPORTO MOTORE	10	4404130020	SCHEDA UTENTE
4	4404010103	MANOMETRO 1/8" 3 KG./C "	11	4404130022	KIT PRESSACAVO
5	4404010104	RACCORDO 1 1/2" + O-RIN "	12	4404130021	CARTER SUPERIORE
6	4404130002	GUARNIZIONE COPERCHIO	13	4404130023	MOTORIDUTTORE
7	4404130015	VOLANTE NANOFIBER			

CODE **67509**

 BESCHREIBUNG: **NANOFIBER AUTO SET**

DEUTSCH

POS	CODE	BESCHREIBUNG	POS	CODE	BESCHREIBUNG
1	4404130016	STEUERPLATINE	8	4404130014	ABDECKUNG OBEN + DICHUNG
2	4404130017	O-RING 121X2,5	9	4404130019	CLIP + SCHRAUBEN
3	4404130018	MOTORHALTERUNG	10	4404130020	NUTZER STEUERPLATINE
4	4404010103	MANOMETER 1/8" 3 KG/C "	11	4404130022	SET QUETSCHVERSCHRAUBUNG
5	4404010104	GEWINDESTÜCK 1 1/2" UND O-RIN "	12	4404130021	OBERES ABDECKUNG
6	4404130002	DICHUNG ABDECKUNG	13	4404130023	REDUZIERMOTOR
7	4404130015	DREHRAD NANOFIBER			

