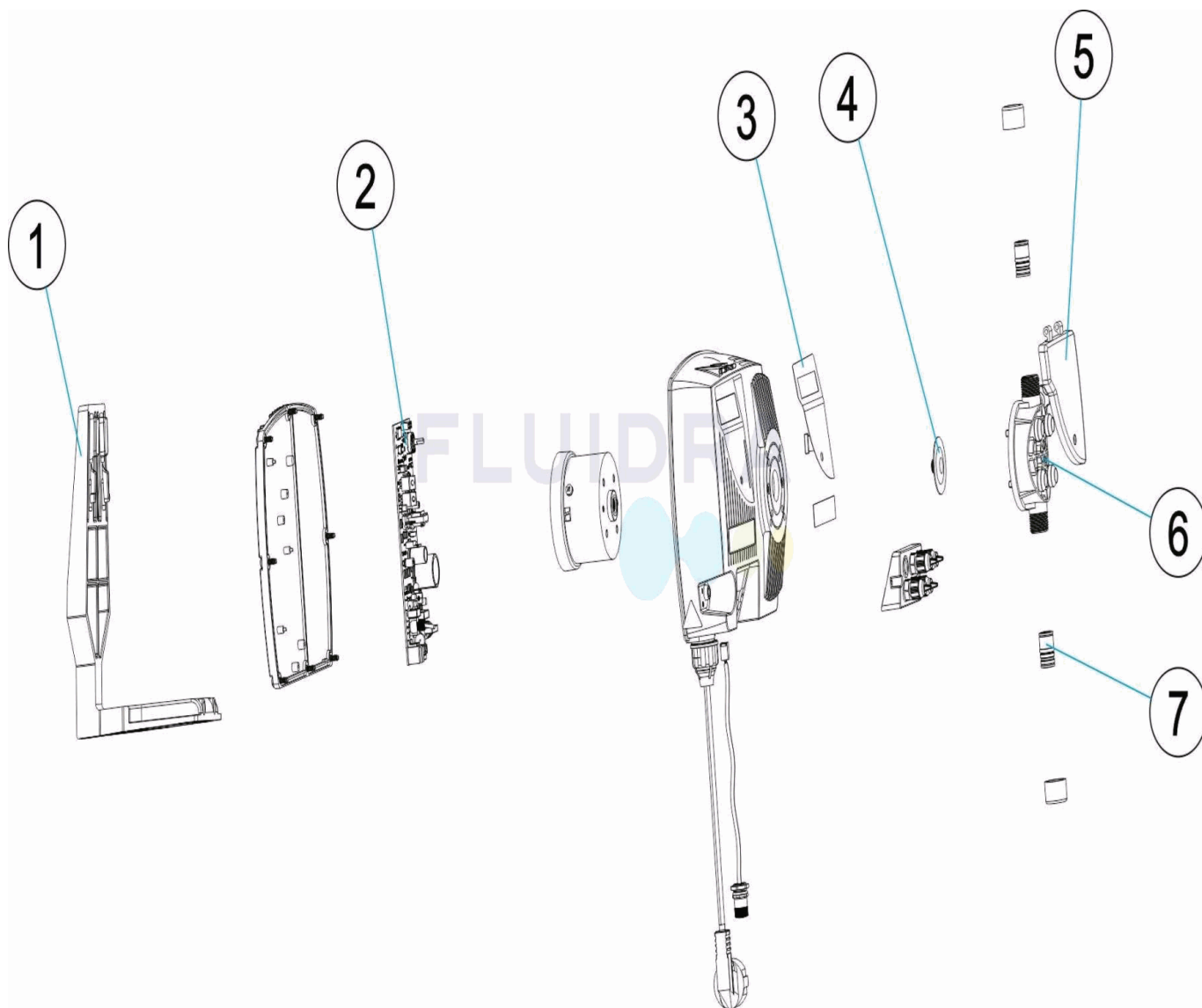


CODIGO **57132, 57133, 57135, 66164**

 DESCRIPCION: **OPTIMA**

ESPAÑOL

POS	CODIGO	DESCRIPCION	POS	CODIGO	DESCRIPCION
1	* 36830	PIE SOPORTE	4	* 57140R0004	DIAFRAGMA
1	* 66164R0004	PIE SOPORTE	4	* 57135R0001	DIAFRAGMA
2	* 36007R0012	CIRCUITO ANALOGICO 5 L/H.	5	* 36007R0010	TAPA
2	* 36008R0012	CIRCUITO ANALOGICO 10 L/H.	6	* 36007R0001	CABEZAL PVC. FPM. BOLAS CERAMICA 5-10 L/H.
2	* 36009R0012	CIRCUITO ANALOGICO 20 L/H.	6	* 36009R0001	CABEZAL PVC. FPM. BOLAS CERAMICA 20 L/H.
2	* 66164R0003	CIRCUITO ELECTRONICO	6	* 66164R0001	CABEZAL COMPLETO
3	* 57132R0002	ETIQUETA TECLADO	7	* 57140R0003	VÁLVULA KOMPACT PVDF-T/FPM
3	* 66164R0002	TECLADO	7	* 36009R0007	VALVULA PVDF-T/FPM 20 L/H.

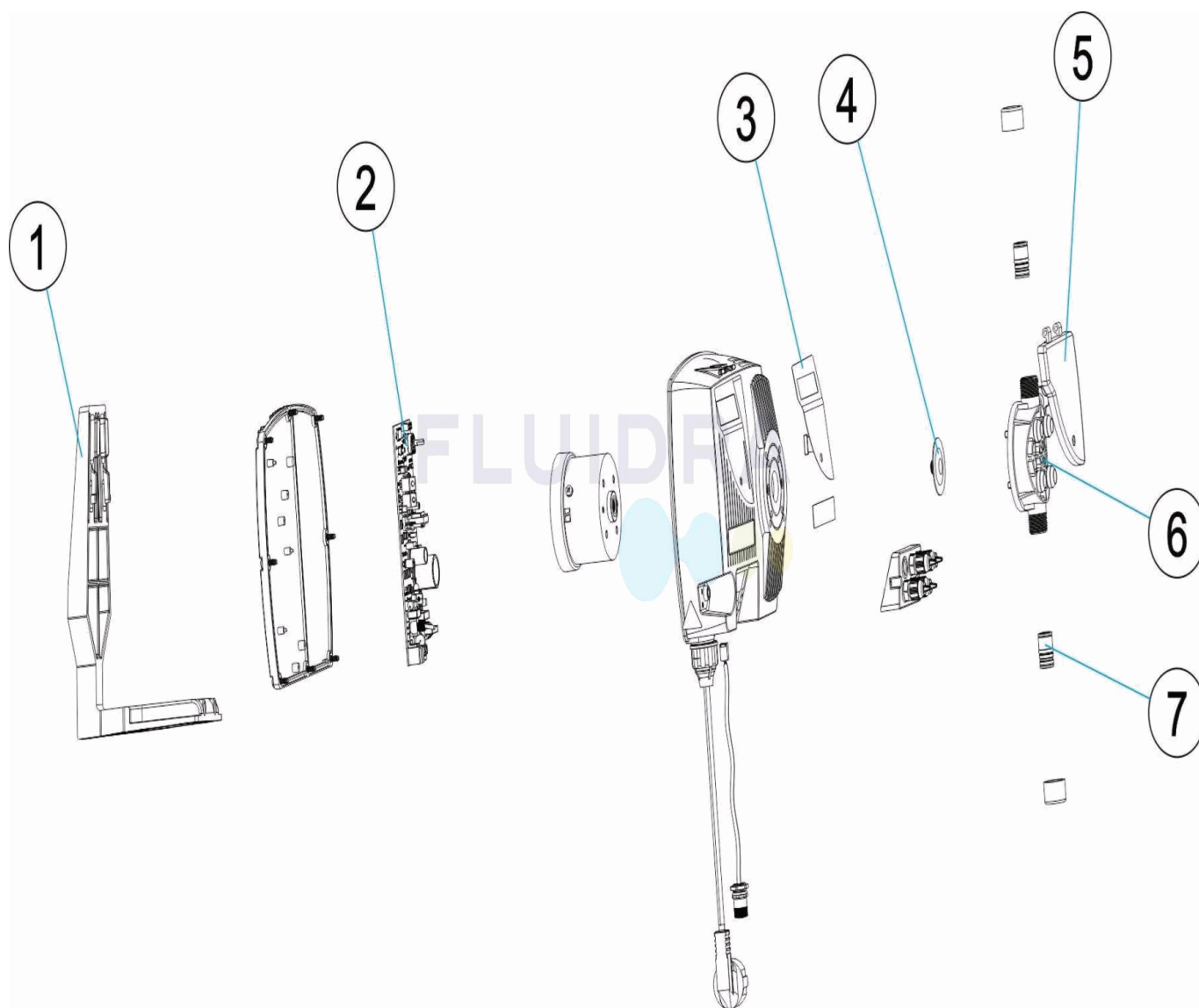
CODIGO **57132, 57133, 57135, 66164**

DESCRIPCION: **OPTIMA**

OBSERVACIONES

POS	CODIGO	OBSERVACIONES
1	36830	PARA: 57132, 57133, 57135
1	66164R0004	PARA: 66164
2	36007R0012	PARA: 57132
2	36008R0012	PARA: 57133
2	36009R0012	PARA: 57135
2	66164R0003	PARA: 66164
3	57132R0002	PARA: 57132, 57133, 57135
3	66164R0002	PARA: 66164
4	57140R0004	PARA: 57132, 57133, 66164
4	57135R0001	PARA: 57135
5	36007R0010	PARA: 57132, 57133, 57135
6	36007R0001	PARA: 57132, 57133
6	36009R0001	PARA: 57135
6	66164R0001	PARA: 66164
7	57140R0003	PARA: 57132, 57133, 66164
7	36009R0007	PARA: 57135

CODE **57132, 57133, 57135, 66164**

 DESCRIPTION: **OPTIMA**

FRANCAIS

POS	CODE	DESCRIPTION	POS	CODE	DESCRIPTION
1	* 36830	PIED SUPPORT	4	* 57140R0004	DIAPHRAGME
1	* 66164R0004	PIED SUPPORT	4	* 57135R0001	DIAFRAGMA
2	* 36007R0012	CIRCUIT ANALOGIQUE 5 L/H	5	* 36007R0010	COUVERCLE
2	* 36008R0012	CIRCUIT ANALOGIQUE 10 L/H	6	* 36007R0001	TÊTE PVC. FPM. BILLES PIREX 5-10 L/H.
2	* 36009R0012	CIRCUIT ANALOGIQUE 20 L/H	6	* 36009R0001	TETE PVC FPM BOISSEaux PIREX 20L/H
2	* 66164R0003	CIRCUIT ELECTRONIQUE	6	* 66164R0001	TÊTE COMPLÈTE
3	* 57132R0002	ETIQUETA TECLADO	7	* 57140R0003	VANNE KOMPACT PVDF-T/FPM
3	* 66164R0002	CLAVIER	7	* 36009R0007	VANNE PVDF-T/FPM 20L/H

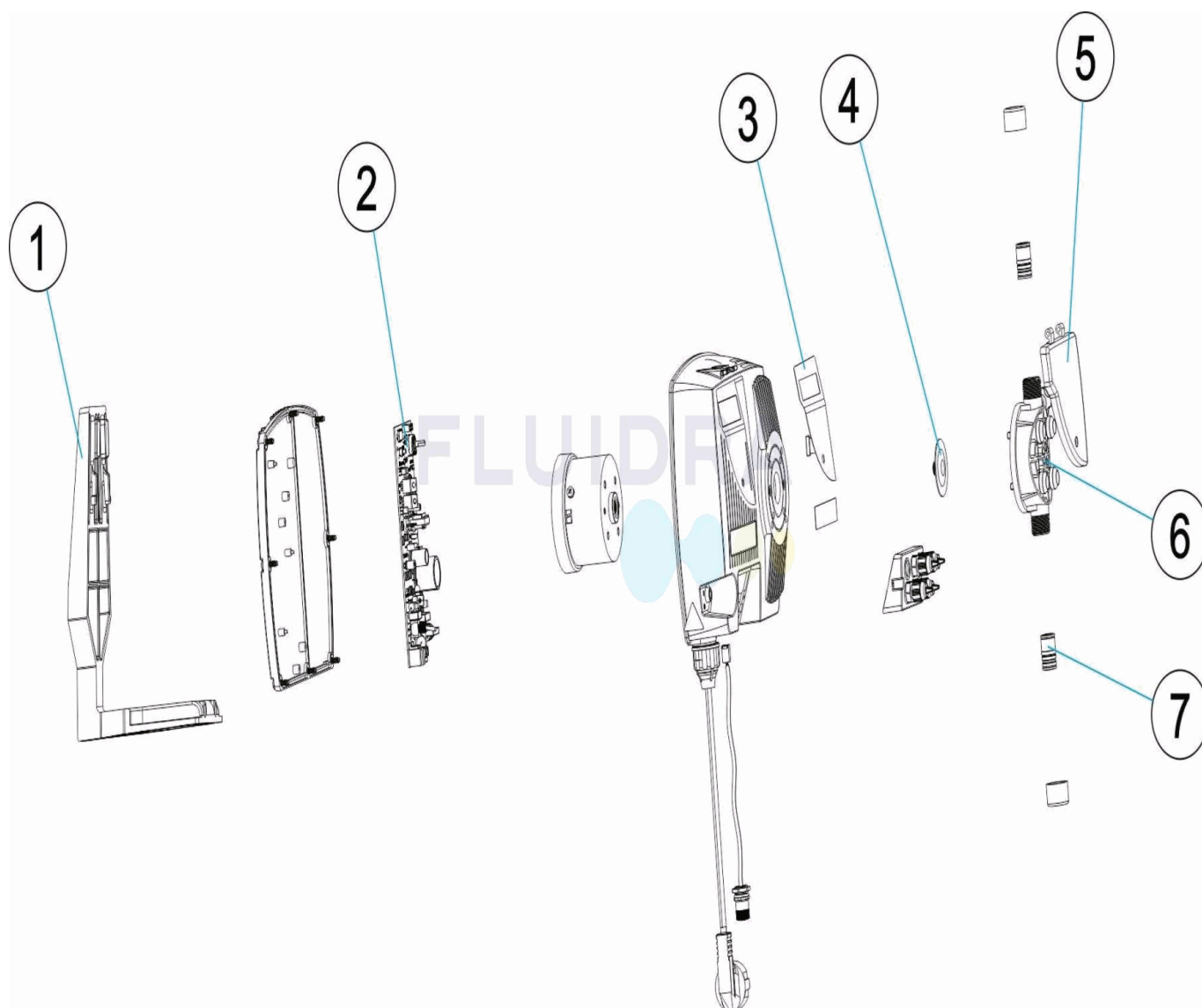
CODE **57132, 57133, 57135, 66164**

DESCRIPTION: **OPTIMA**

OBSERVATIONS

POS	CODE	OBSERVATIONS
1	36830	POUR: 57132, 57133, 57135
1	66164R0004	POUR: 66164
2	36007R0012	POUR: 57132
2	36008R0012	POUR: 57133
2	36009R0012	POUR: 57135
2	66164R0003	POUR: 66164
3	57132R0002	POUR: 57132, 57133, 57135
3	66164R0002	POUR: 66164
4	57140R0004	POUR: 57132, 57133, 66164
4	57135R0001	POUR: 57135
5	36007R0010	POUR: 57132, 57133, 57135
6	36007R0001	POUR: 57132, 57133
6	36009R0001	POUR: 57135
6	66164R0001	POUR: 66164
7	57140R0003	POUR: 57132, 57133, 66164
7	36009R0007	POUR: 57135

CODE **57132, 57133, 57135, 66164**

 DESCRIPTION: **OPTIMA**


ENGLISH

POS	CODE	DESCRIPTION	POS	CODE	DESCRIPTION
1	* 36830	SUPPORT FOOT	4	* 57140R0004	DIAPHRAGM
1	* 66164R0004	SUPPORT FOOT	4	* 57135R0001	DIAPHRAGME
2	* 36007R0012	5 L/H ANALOGUE CIRCUIT	5	* 36007R0010	COVER
2	* 36008R0012	10 L/H ANALOGUE CIRCUIT	6	* 36007R0001	5-10 L/H PYREX BALLS. PVC HEAD. FPM.
2	* 36009R0012	20 L/H ANALOGUE CIRCUIT	6	* 36009R0001	20 L/H PYREX BALLS. PVC HEAD. FPM.
2	* 66164R0003	ELECTRONIC CIRCUIT	6	* 66164R0001	COMPLETE HEAD ASSEMBLY
3	* 57132R0002	ÉTIQUETTE CLAVIER	7	* 57140R0003	KOMPACT PVDF-T/FPM VALVE
3	* 66164R0002	KEYPAD	7	* 36009R0007	20 L/H PVDF-T/FPM VALVE

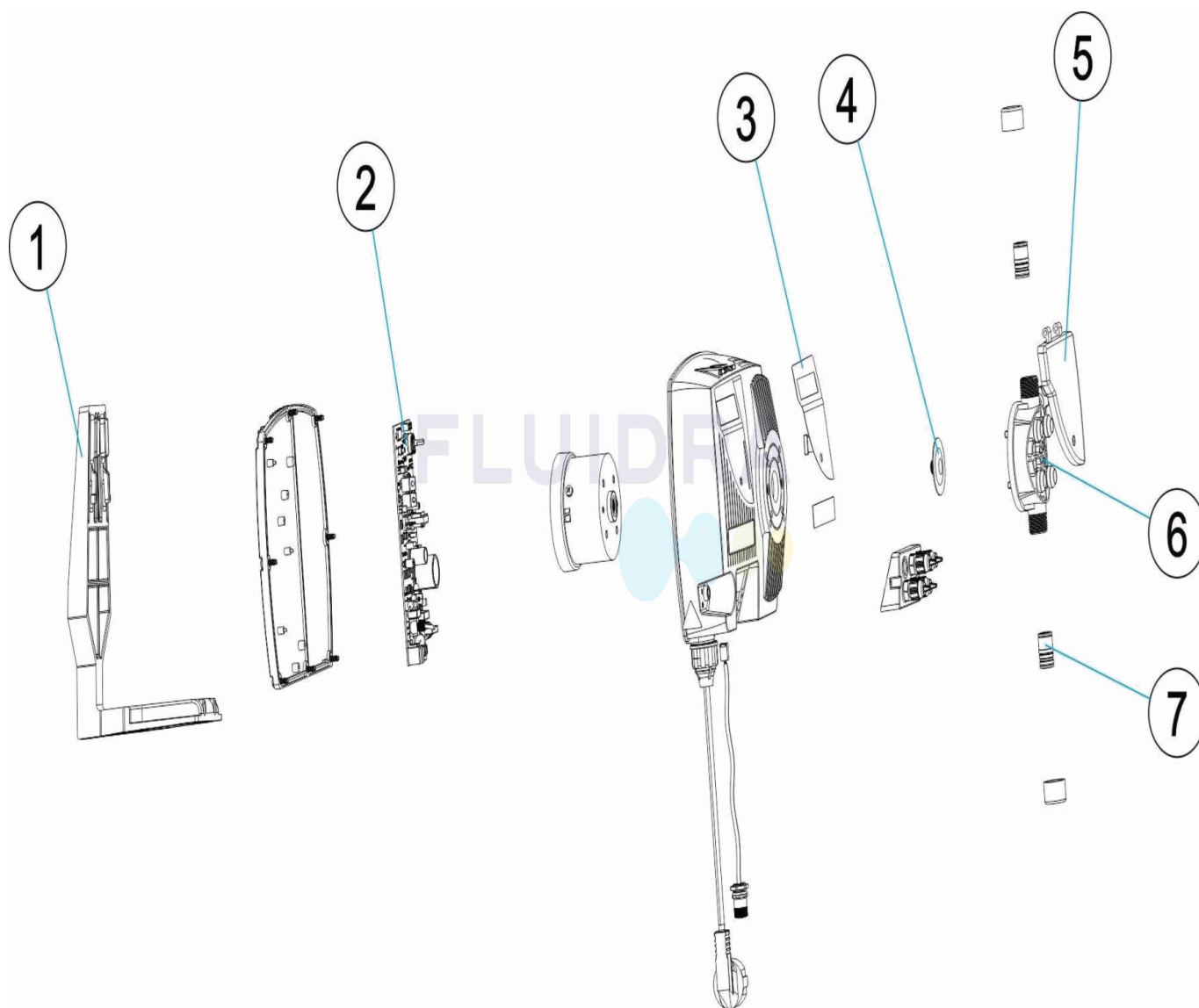
CODE **57132, 57133, 57135, 66164**

DESCRIPTION: **OPTIMA**

OBSERVATIONS

POS	CODE	OBSERVATIONS
1	36830	FOR: 57132, 57133, 57135
1	66164R0004	FOR: 66164
2	36007R0012	FOR: 57132
2	36008R0012	FOR: 57133
2	36009R0012	FOR: 57135
2	66164R0003	FOR: 66164
3	57132R0002	FOR: 57132, 57133, 57135
3	66164R0002	FOR: 66164
4	57140R0004	FOR: 57132, 57133, 66164
4	57135R0001	FOR: 57135
5	36007R0010	FOR: 57132, 57133, 57135
6	36007R0001	FOR: 57132, 57133
6	36009R0001	FOR: 57135
6	66164R0001	FOR: 66164
7	57140R0003	FOR: 57132, 57133, 66164
7	36009R0007	FOR: 57135

CODICE **57132, 57133, 57135, 66164**

 DESCRIZIONE: **OPTIMA**

ITALIANO

POS	CODICE	DESCRIZIONE	POS	CODICE	DESCRIZIONE
1	* 36830	PIEDE SUPPORTO	4	* 57140R0004	DIAFRAMMA
1	* 66164R0004	PIEDE SUPPORTO	4	* 57135R0001	DIAPHRAGM
2	* 36007R0012	CIRCUITO ANALOGICO 5 L/H.	5	* 36007R0010	COPERCHIO
2	* 36008R0012	CIRCUITO ANALOGICO 10 L/H	6	* 36007R0001	TESTINA PVC. FPM. SFERE PIREX 5-10 L/H.
2	* 36009R0012	CIRCUITO ANALOGICO 20 L/H	6	* 36009R0001	TESTINA PVC. FPM. SFERE PIREX 20 L/H.
2	* 66164R0003	CIRCUITO ELETTRONICO	6	* 66164R0001	TESTA COMPLETA
3	* 57132R0002	KEYBOARD LABEL	7	* 57140R0003	VALVOLA KOMPACT PVDF-T/FPM
3	* 66164R0002	PULSANTIERA	7	* 36009R0007	VALVOLA PVDF-T/FPM 20 L/H.

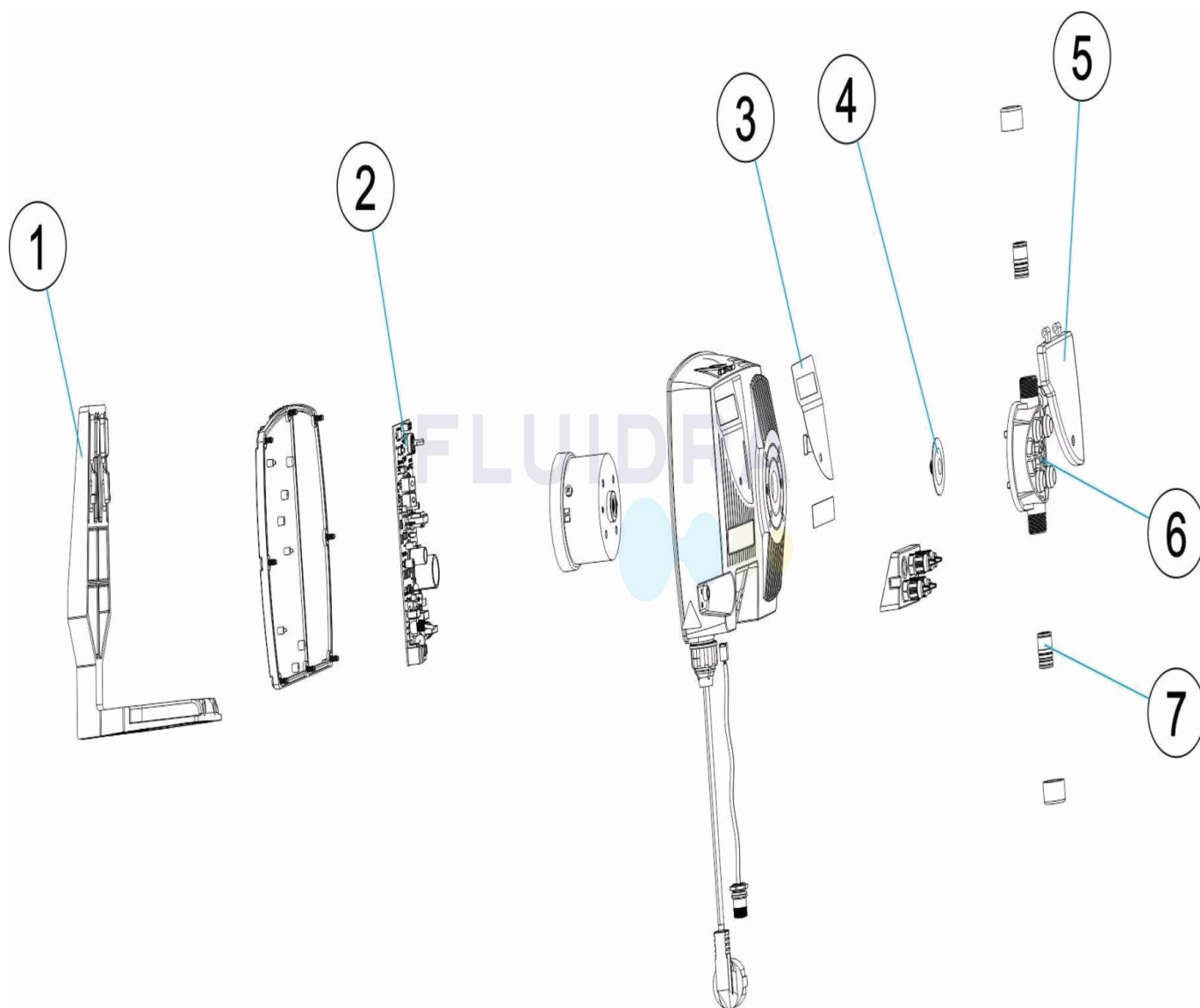
CODICE **57132, 57133, 57135, 66164**

 DESCRIZIONE: **OPTIMA**

OSSERVAZIONI

POS	CODICE	OSSERVAZIONI
1	36830	PER: 57132, 57133, 57135
1	66164R0004	PER: 66164
2	36007R0012	PER: 57132
2	36008R0012	PER: 57133
2	36009R0012	PER: 57135
2	66164R0003	PER: 66164
3	57132R0002	PER: 57132, 57133, 57135
3	66164R0002	PER: 66164
4	57140R0004	PER: 57132, 57133, 66164
4	57135R0001	PER: 57135
5	36007R0010	PER: 57132, 57133, 57135
6	36007R0001	PER: 57132, 57133
6	36009R0001	PER: 57135
6	66164R0001	PER: 66164
7	57140R0003	PER: 57132, 57133, 66164
7	36009R0007	PER: 57135

CODE **57132, 57133, 57135, 66164**

 BESCHREIBUNG: **OPTIMA**

DEUTSCH

POS	CODE	BESCHREIBUNG	POS	CODE	BESCHREIBUNG
1	* 36830	STÜTZFUSS	4	* 57140R0004	MEMBRAN
1	* 66164R0004	SOCKEL HALTERUNG	4	* 57135R0001	DIAFRAMMA
2	* 36007R0012	SCHALTKREIS ANALOG 5 L/H	5	* 36007R0010	ABDECKUNG
2	* 36008R0012	SCHALTKREIS ANALOG 10 L/H	6	* 36007R0001	KOPFSTÜCK PVC. FPM. KUGELN KERAMIK 5 - 10 L
2	* 36009R0012	SCHALTKREIS ANALOG 20 L/H	6	* 36009R0001	KOPFSTÜCK PVC. FPM. KERAMIKKUGELN 20 L/H
2	* 66164R0003	PLATINE DOSIERPUMPE	6	* 66164R0001	KOPFTEIL KOMPLETT
3	* 57132R0002	ETICHETTA TASTIERA	7	* 57140R0003	VENTIL KOMPAKT PVDF-T/FPM
3	* 66164R0002	TASTENFELD	7	* 36009R0007	VENTIL PVDF-T/FPM 20 L/H

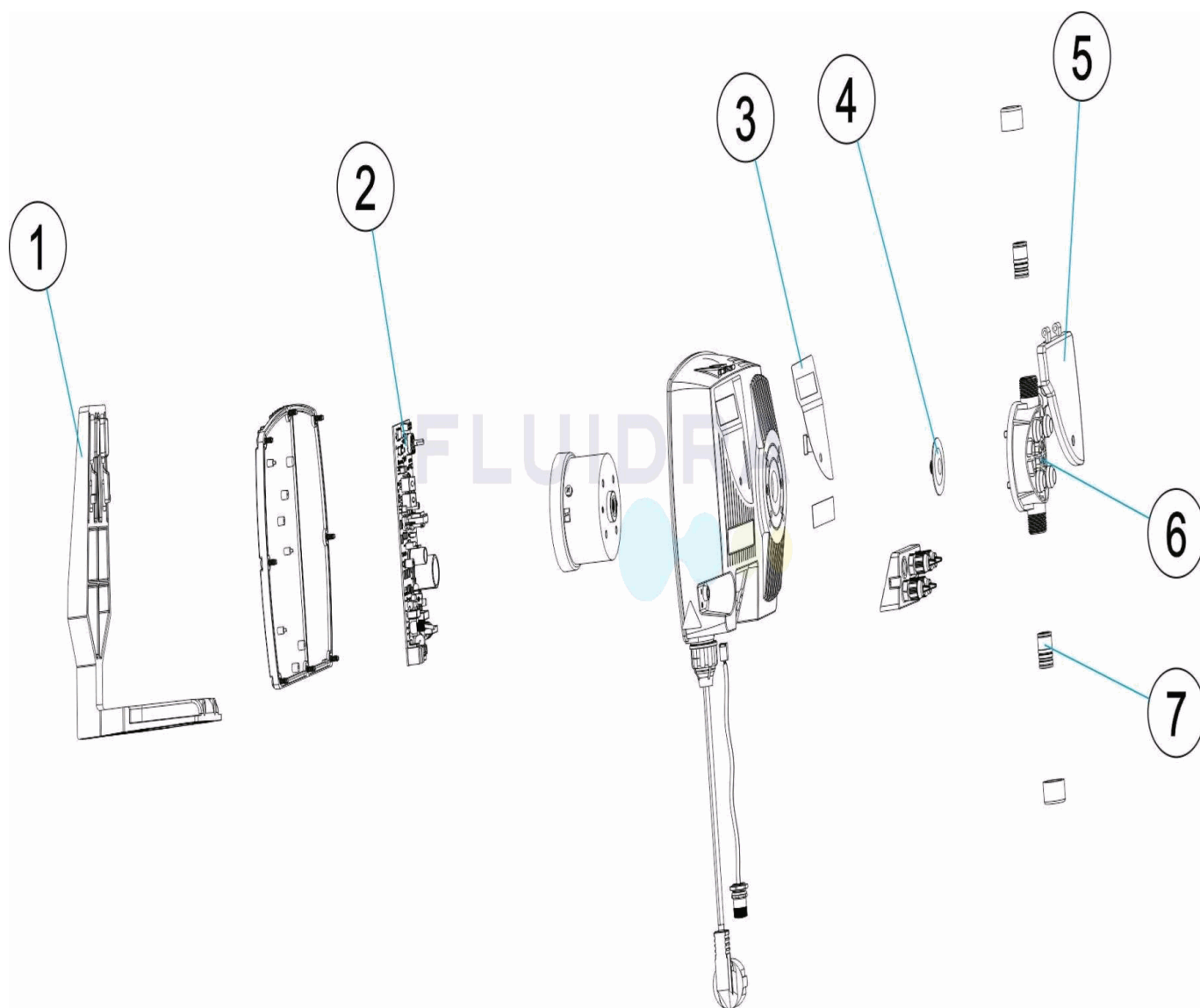
CODE **57132, 57133, 57135, 66164**

BESCHREIBUNG: **OPTIMA**

HINWEISE

POS	CODE	HINWEISE
1	36830	FÜR: 57132, 57133, 57135
1	66164R0004	FÜR: 66164
2	36007R0012	FÜR: 57132
2	36008R0012	FÜR: 57133
2	36009R0012	FÜR: 57135
2	66164R0003	FÜR: 66164
3	57132R0002	FÜR: 57132, 57133, 57135
3	66164R0002	FÜR: 66164
4	57140R0004	FÜR: 57132, 57133, 66164
4	57135R0001	FÜR: 57135
5	36007R0010	FÜR: 57132, 57133, 57135
6	36007R0001	FÜR: 57132, 57133
6	36009R0001	FÜR: 57135
6	66164R0001	FÜR: 66164
7	57140R0003	FÜR: 57132, 57133, 66164
7	36009R0007	FÜR: 57135

CODIGO **57132, 57133, 57135, 66164**

 DESCRIÇÃO: **OPTIMA**

PORTUGUES

POS	CODIGO	DESCRIÇÃO	POS	CODIGO	DESCRIÇÃO
1	* 36830	SUORTE DA BASE	4	* 57140R0004	DIAFRAGMA
1	* 66164R0004	SUORTE DA BASE	4	* 57135R0001	MEMBRAN
2	* 36007R0012	CIRCUITO ANALÓGICO 5 L/H	5	* 36007R0010	TAMPA
2	* 36008R0012	CIRCUITO ANALÓGICO 10 L/H	6	* 36007R0001	CABEÇAL PVC. FPM. BOLAS PIREX 5-10 L/H.
2	* 36009R0012	CIRCUITO ANALÓGICO 20 L/H	6	* 36009R0001	CABEÇAL PVC. FPM BOLAS PIREX 20 L/H.
2	* 66164R0003	CIRCUITO ELECTRONICO	6	* 66164R0001	CABEÇAL COMPLETO
3	* 57132R0002	ETIKETTE TASTADUR	7	* 57140R0003	VALVULA KOMPACT PVDF-T/FPM
3	* 66164R0002	TECLADO	7	* 36009R0007	VALVULA PVDF-T/FPM 20 L/H.

CODIGO **57132, 57133, 57135, 66164**

DESCRIÇÃO: **OPTIMA**

OBSERVACÕES

POS	CODIGO	OBSERVACÕES
1	36830	PARA: 57132, 57133, 57135
1	66164R0004	PARA: 66164
2	36007R0012	PARA: 57132
2	36008R0012	PARA: 57133
2	36009R0012	PARA: 57135
2	66164R0003	PARA: 66164
3	57132R0002	PARA: 57132, 57133, 57135
3	66164R0002	PARA: 66164
4	57140R0004	PARA: 57132, 57133, 66164
4	57135R0001	PARA: 57135
5	36007R0010	PARA: 57132, 57133, 57135
6	36007R0001	PARA: 57132, 57133
6	36009R0001	PARA: 57135
6	66164R0001	PARA: 66164
7	57140R0003	PARA: 57132, 57133, 66164
7	36009R0007	PARA: 57135