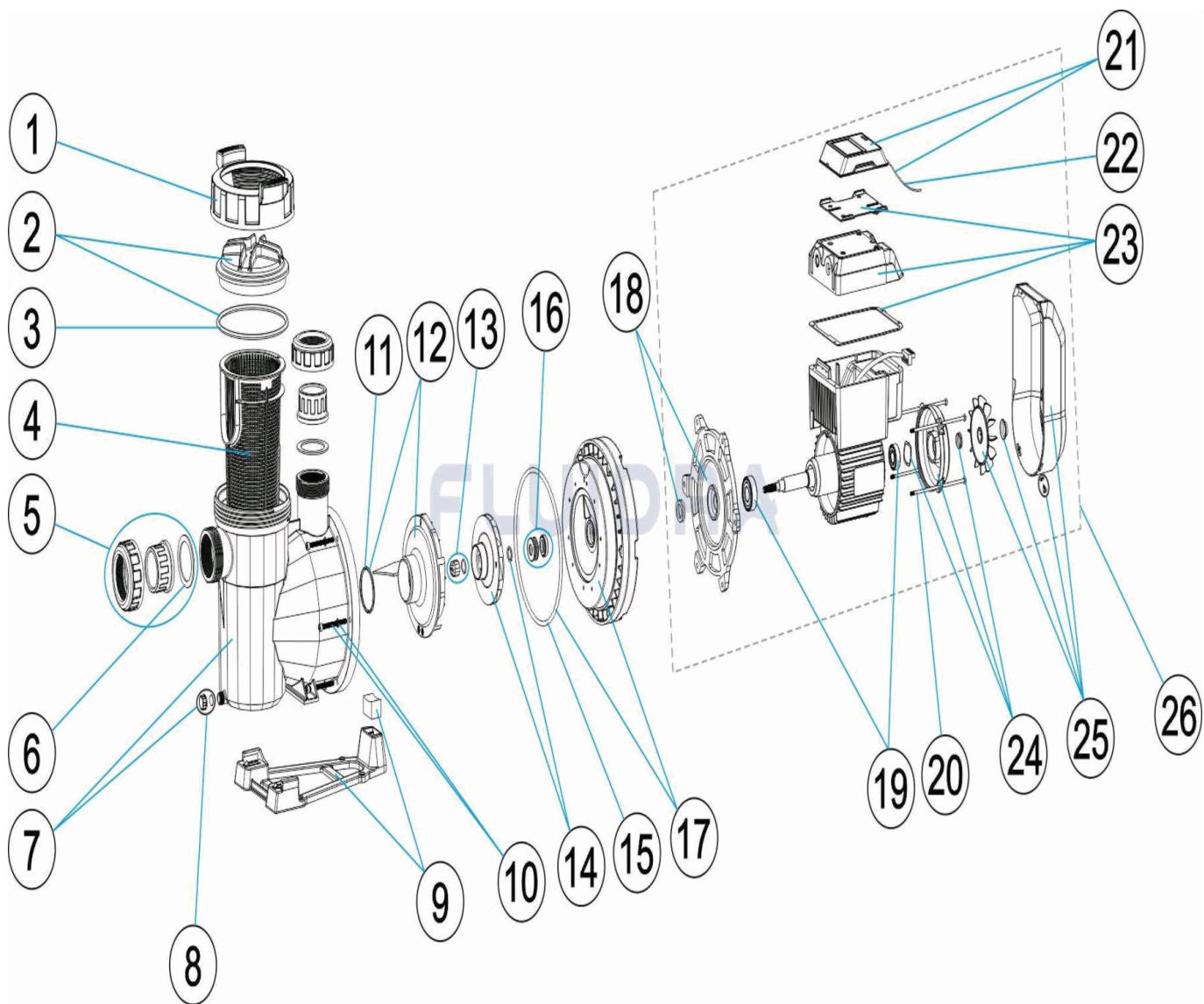


CODIGO **67547, 67548**

 DESCRIPCION: **BOMBA VICTORIA PLUS SILENT VS**

ESPAÑOL

| POS | CODIGO | DESCRIPCION | CANTIDAD | POS | CODIGO | DESCRIPCION | CANTIDAD |
|-----|--------------|-----------------------------------|----------|-----|--------------|-------------------------------|----------|
| 1 | 4405010585 | TUERCA TAPA PREFILTRO | | 13 | 4405010134 | TAPÓN RODETE M8 IZQUIERDA | |
| 2 | 4405010702 | TAPA PREFILTRO | | 14 | * 4405010596 | RODETE 1 (III) HP | |
| 3 | 4405010178 | JUNTA TORICA D. 151,7X6,99 | | 14 | * 4405010600 | RODETE 2 (III) HP | |
| 4 | 4405010105 | CESTO PREFILTRO | | 15 | 4405010487 | JUNTA TORICA | |
| 5 | * 4405010106 | ACCESORIOS ENLACE <= 1 HP | | 16 | 4405010118 | JUNTA MECÁNICA | |
| 5 | * 4405010107 | ACCESORIOS ENLACE 1,5 HP - 2,5 HP | | 17 | 4405010603 | BRIDA SELLO MECÁNICO | |
| 6 | 4405010179 | JUNTA PLANA 72X55X2,5 | | 18 | * 4405010604 | BRIDA MOTOR DELANTERA | |
| 7 | 4405010586 | CUERPO BOMBA | | 18 | * 4405010607 | BRIDA MOTOR DELANTERA | |
| 8 | 4405010587 | TAPON PURGA | | 19 | * 4405010609 | RODAMIENTO MOTOR < 1 HP | |
| 9 | * 4405010588 | PIE BOMBA | | 19 | * 4405010610 | RODAMIENTO MOTOR 1,5 - 3 HP | |
| 9 | * 4405010492 | PIE BOMBA | | 20 | * 4405010144 | VARILLAS MOTOR 0,75 - 1 HP | |
| 10 | 4405010590 | TORNILLO FIJACION CUERPO | | 20 | * 4405010145 | VARILLAS MOTOR 1,5 - 3 HP III | |
| 11 | 4405010161 | JUNTA TORICA D. 56,7X3,5 | | 21 | 4405010828 | MANDO | |

* VER HOJA DE OBSERVACIONES

CODIGO **67547, 67548**

DESCRIPCION: **BOMBA VICTORIA PLUS SILENT VS**

| | | | | | |
|----|--------------|-----------------------------------|----|--------------|-----------------------|
| 12 | 4405010116 | DIFUSOR 1 HP - 2 HP | 22 | 4405010829 | CABLE MANDO |
| 23 | 4405010830 | CAJA DISIPADOR | 25 | * 4405010832 | CJTO. VENTILADOR-TAPA |
| 24 | * 4405010612 | TAPA MOTOR MEC. C.71 C/CAJERA D35 | 26 | * 67547R4000 | MOTOR VS 1 HP |
| 24 | * 4405010614 | TAPA MOTOR MEC. C.80 C/CAJERA D47 | 26 | * 67548R4000 | MOTOR VS 2 HP |
| 25 | * 4405010831 | CJTO. VENTILADOR-TAPA | | | |

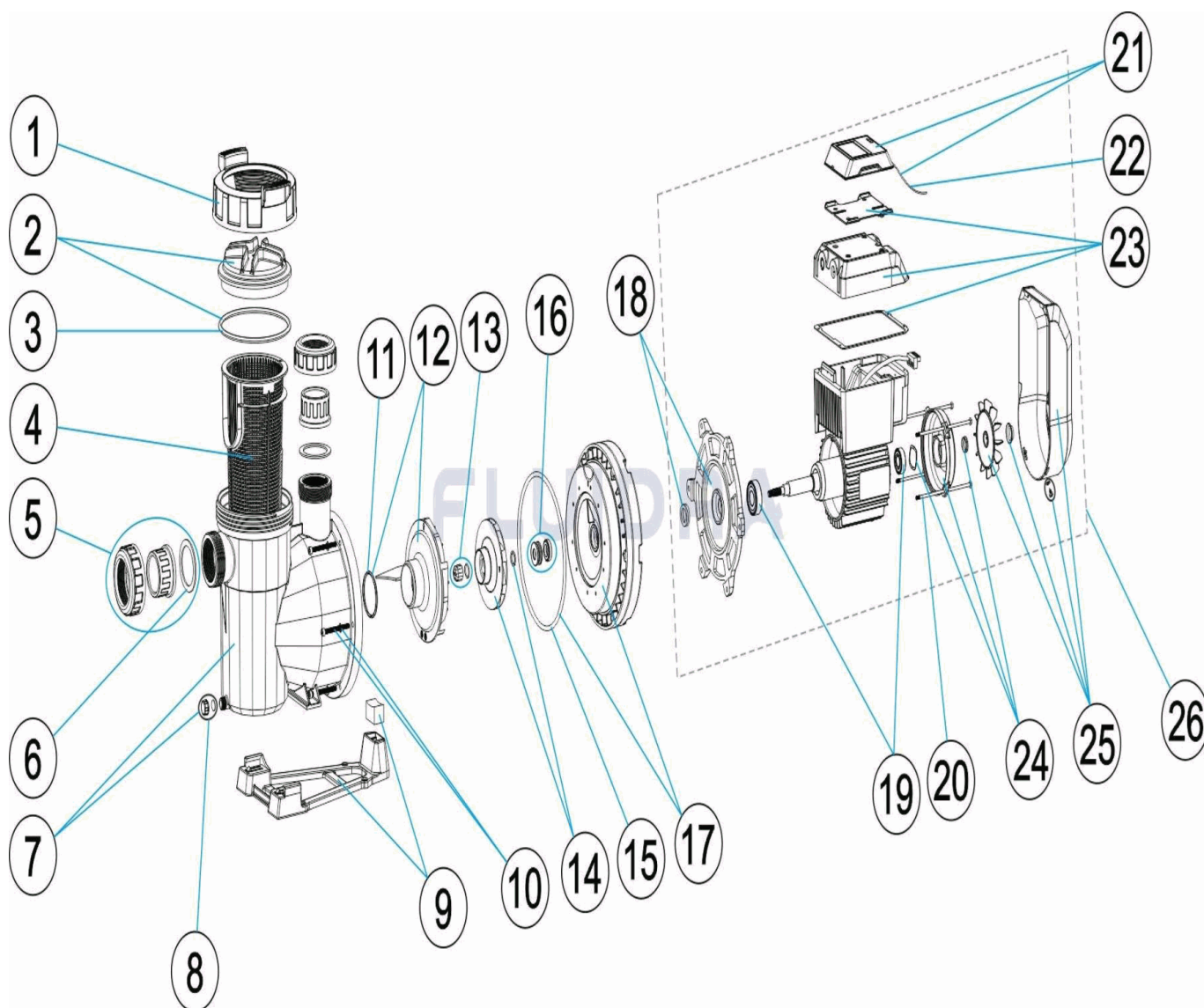
CODIGO **67547, 67548**

DESCRIPCION: **BOMBA VICTORIA PLUS SILENT VS**

OBSERVACIONES

| POS | CODIGO | OBSERVACIONES |
|-----|------------|---------------|
| 5 | 4405010106 | PARA: 67547 |
| 5 | 4405010107 | PARA: 67548 |
| 9 | 4405010588 | PARA: 67547 |
| 9 | 4405010492 | PARA: 67548 |
| 14 | 4405010596 | PARA: 67547 |
| 14 | 4405010600 | PARA: 67548 |
| 18 | 4405010604 | PARA: 67547 |
| 18 | 4405010607 | PARA: 67548 |
| 19 | 4405010609 | PARA: 67547 |
| 19 | 4405010610 | PARA: 67548 |
| 20 | 4405010144 | PARA: 67547 |
| 20 | 4405010145 | PARA: 67548 |
| 24 | 4405010612 | PARA: 67547 |
| 24 | 4405010614 | PARA: 67548 |
| 25 | 4405010831 | PARA: 67547 |
| 25 | 4405010832 | PARA: 67548 |
| 26 | 67547R4000 | PARA: 67547 |
| 26 | 67548R4000 | PARA: 67548 |

CODE **67547, 67548**

 DESCRIPTION: **POMPE VICTORIA PLUS SILENT VS**

FRANCAIS

| POS | CODE | DESCRIPTION | QUANTITE | POS | CODE | DESCRIPTION | QUANTITE |
|-----|--------------|--------------------------------|----------|-----|--------------|-----------------------------------|----------|
| 1 | 4405010585 | ECROU COUVERCLE PREFILTRE | | 13 | 4405010134 | BOUCHON BOUT AXE M8 IZQ. | |
| 2 | 4405010702 | COUVERCLE PREFILTRE | | 14 | * 4405010596 | TURBINE 1 (III) HP | |
| 3 | 4405010178 | JOINT TORIQUE D 151,7X6,99 | | 14 | * 4405010600 | TURBINE 2 (III) HP | |
| 4 | 4405010105 | PANIER PREFILTRE | | 15 | 4405010487 | JOINT TORIQUE | |
| 5 | * 4405010106 | RACCORDS UNION <= 1 HP | | 16 | 4405010118 | GARNITURE MECANIQUE | |
| 5 | * 4405010107 | RACCORDS UNION 1,5 HP - 2,5 HP | | 17 | 4405010603 | FLASQUE PORTE GRANITURE | |
| 6 | 4405010179 | JOINT PLAT 72X55X2,5 | | 18 | * 4405010604 | BRIDE MOTEUR AVANT | |
| 7 | 4405010586 | CORPS POMPE | | 18 | * 4405010607 | BRIDE MOTEUR AVANT | |
| 8 | 4405010587 | BOUCHON DE PURGUE | | 19 | * 4405010609 | ROULEMENT MOTEUR < 1 HP | |
| 9 | * 4405010588 | SOCLE POMPE | | 19 | * 4405010610 | ROULEMENT MOTEUR 1,5 - 3 HP | |
| 9 | * 4405010492 | SOCLE POMPE | | 20 | * 4405010144 | TIRANTS D'ACCOUPLEMENT MOTEUR 0,7 | |
| 10 | 4405010590 | VIS FIXATION CORPS | | 20 | * 4405010145 | TIRANTS D'ACCOUPLEMENT MOTEUR 1,5 | |
| 11 | 4405010161 | JOINT TORIQUE D 56,7X3,5 | | 21 | 4405010828 | COMMANDE | |

* VOIR FICHE D'OBSERVATIONS

CODE **67547, 67548**

 DESCRIPTION: **POMPE VICTORIA PLUS SILENT VS**

| | | | | | |
|----|--------------|--------------------------------------|----|--------------|--------------------------------|
| 12 | 4405010116 | DIFFUSEUR 1 HP - 2 HP | 22 | 4405010829 | CÂBLE COMMANDE |
| 23 | 4405010830 | BOITE DISIPATEUR | 25 | * 4405010832 | ENSEMBLE COUVERCLE VENTILATEUR |
| 24 | * 4405010612 | COUVERCLE MOTEUR MEC. C.71 ET RAINUF | 26 | * 67547R4000 | MOTEUR VS 1 HP |
| 24 | * 4405010614 | COUVERCLE MOTEUR MEC. C.80 ET RAINUF | 26 | * 67548R4000 | MOTEUR VS 2 HP |
| 25 | * 4405010831 | ENSEMBLE COUVERCLE VENTILATEUR | | | |

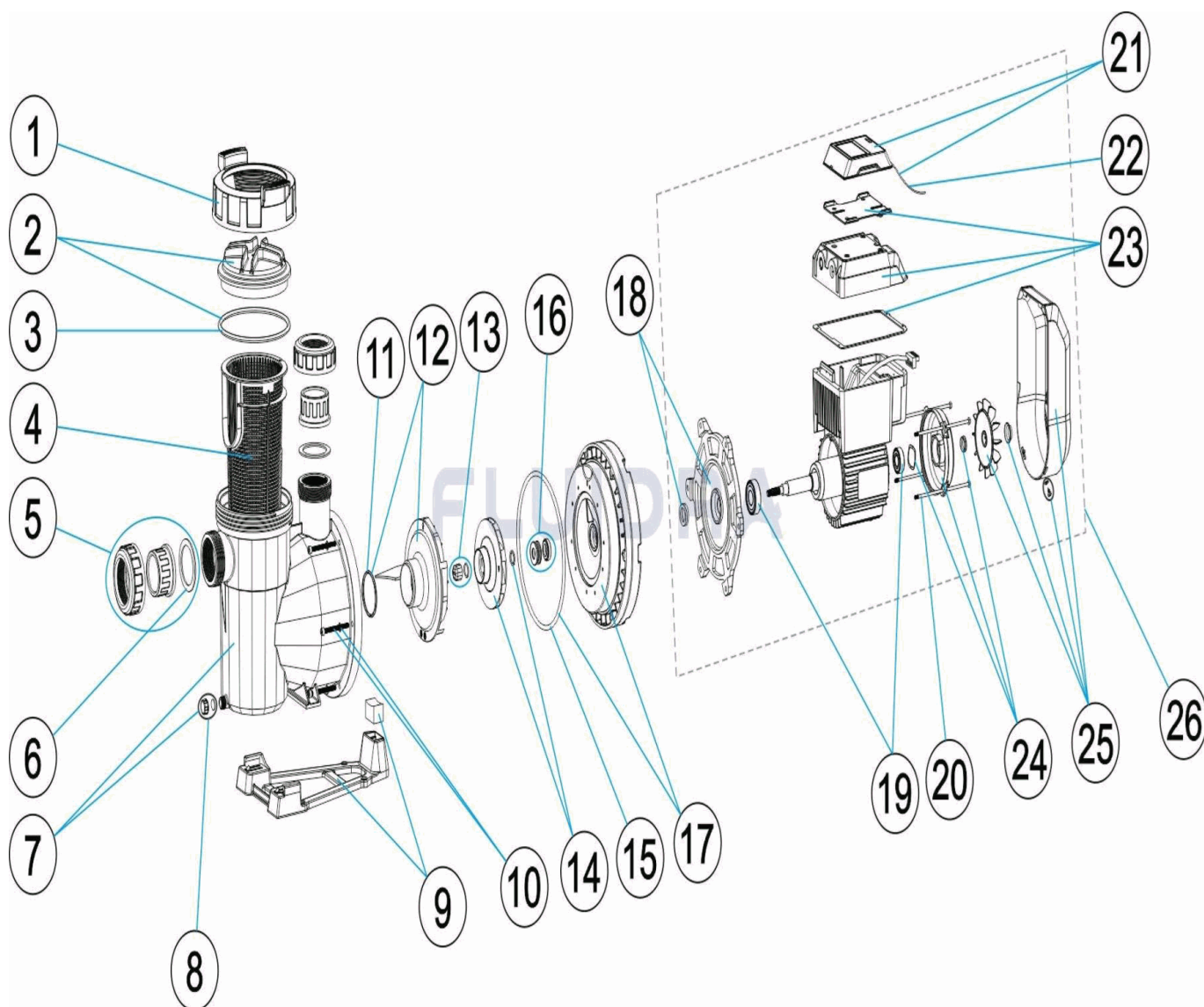
CODE **67547, 67548**

 DESCRIPTION: **POMPE VICTORIA PLUS SILENT VS**

OBSERVATIONS

| POS | CODE | OBSERVATIONS |
|-----|------------|--------------|
| 5 | 4405010106 | POUR: 67547 |
| 5 | 4405010107 | POUR: 67548 |
| 9 | 4405010588 | POUR: 67547 |
| 9 | 4405010492 | POUR: 67548 |
| 14 | 4405010596 | POUR: 67547 |
| 14 | 4405010600 | POUR: 67548 |
| 18 | 4405010604 | POUR: 67547 |
| 18 | 4405010607 | POUR: 67548 |
| 19 | 4405010609 | POUR: 67547 |
| 19 | 4405010610 | POUR: 67548 |
| 20 | 4405010144 | POUR: 67547 |
| 20 | 4405010145 | POUR: 67548 |
| 24 | 4405010612 | POUR: 67547 |
| 24 | 4405010614 | POUR: 67548 |
| 25 | 4405010831 | POUR: 67547 |
| 25 | 4405010832 | POUR: 67548 |
| 26 | 67547R4000 | POUR: 67547 |
| 26 | 67548R4000 | POUR: 67548 |

CODE **67547, 67548**

 DESCRIPTION: **VS VICTORIA PLUS SILENT PUMP**

ENGLISH

| POS | CODE | DESCRIPTION | QUANTITY | POS | CODE | DESCRIPTION | QUANTITY |
|-----|--------------|--------------------------------|----------|-----|--------------|---------------------------|----------|
| 1 | 4405010585 | PRE-FILTER COVER NUT | | 13 | 4405010134 | IMPELLER COVER M8 LEFT | |
| 2 | 4405010702 | PRE-FILTER COVER | | 14 | * 4405010596 | IMPELLER 1 (III) HP | |
| 3 | 4405010178 | O' RING D 151,7X6,99 | | 14 | * 4405010600 | IMPELLER 2 (III) HP | |
| 4 | 4405010105 | PRE-FILTER BASKET | | 15 | 4405010487 | O' RING | |
| 5 | * 4405010106 | UNION FITTINGS <= 1 HP | | 16 | 4405010118 | MECHANICAL SEAL | |
| 5 | * 4405010107 | UNION FITTINGS 1,5 HP - 2,5 HP | | 17 | 4405010603 | MECHANICAL SEAL PLATE | |
| 6 | 4405010179 | INLET GASKET 72X55X2,5 | | 18 | * 4405010604 | FRONT MOTOR FLANGE | |
| 7 | 4405010586 | PUMP HOUSING | | 18 | * 4405010607 | FRONT MOTOR FLANGE | |
| 8 | 4405010587 | DRAIN PLUG | | 19 | * 4405010609 | MOTOR BEARINGS < 1 HP | |
| 9 | * 4405010588 | PUMP BASE | | 19 | * 4405010610 | MOTOR BEARINGS 1,5 - 3 HP | |
| 9 | * 4405010492 | PUMP BASE | | 20 | * 4405010144 | MOTOR TIES 0,75 - 1 HP | |
| 10 | 4405010590 | BODY FIXING SCREW | | 20 | * 4405010145 | MOTOR TIES 1,5 - 3 HP III | |
| 11 | 4405010161 | O' RING D. 56,7X3,5 | | 21 | 4405010828 | CONTROL | |

* SEE OBSERVATIONS SHEET

CODE **67547, 67548**

DESCRIPTION: **VS VICTORIA PLUS SILENT PUMP**

| | | | | | |
|----|--------------|-----------------------|----|--------------|--------------------|
| 12 | 4405010116 | DIFFUSOR 1 HP - 2 HP | 22 | 4405010829 | CONTROL CABLE |
| 23 | 4405010830 | DISSIPATOR BOX | 25 | * 4405010832 | FAN COVER ASSEMBLY |
| 24 | * 4405010612 | MEC. MOTOR COVER C.71 | 26 | * 67547R4000 | VS MOTOR 1 HP |
| 24 | * 4405010614 | MEC. MOTOR COVER C.80 | 26 | * 67548R4000 | VS MOTOR 2 HP |
| 25 | * 4405010831 | FAN COVER ASSEMBLY | | | |

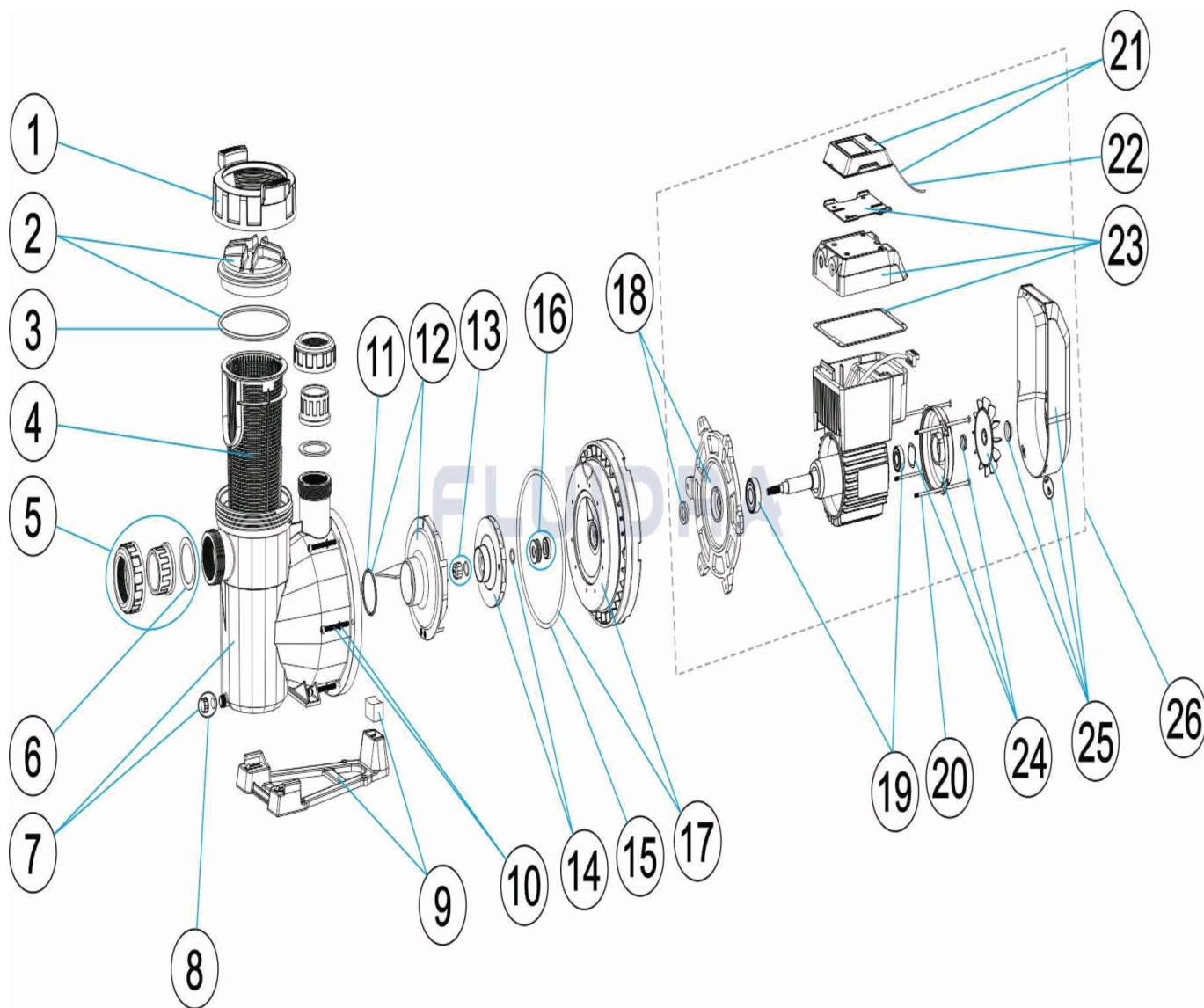
CODE **67547, 67548**

DESCRIPTION: **VS VICTORIA PLUS SILENT PUMP**

OBSERVATIONS

| POS | CODE | OBSERVATIONS |
|-----|------------|--------------|
| 5 | 4405010106 | FOR: 67547 |
| 5 | 4405010107 | FOR: 67548 |
| 9 | 4405010588 | FOR: 67547 |
| 9 | 4405010492 | FOR: 67548 |
| 14 | 4405010596 | FOR: 67547 |
| 14 | 4405010600 | FOR: 67548 |
| 18 | 4405010604 | FOR: 67547 |
| 18 | 4405010607 | FOR: 67548 |
| 19 | 4405010609 | FOR: 67547 |
| 19 | 4405010610 | FOR: 67548 |
| 20 | 4405010144 | FOR: 67547 |
| 20 | 4405010145 | FOR: 67548 |
| 24 | 4405010612 | FOR: 67547 |
| 24 | 4405010614 | FOR: 67548 |
| 25 | 4405010831 | FOR: 67547 |
| 25 | 4405010832 | FOR: 67548 |
| 26 | 67547R4000 | FOR: 67547 |
| 26 | 67548R4000 | FOR: 67548 |

CODICE **67547, 67548**

 DESCRIZIONE: **POMPA VICTORIA PLUS SILENT VS**

ITALIANO

| POS | CODICE | DESCRIZIONE | QUANTITA' | POS | CODICE | DESCRIZIONE | QUANTITA' |
|-----|--------------|-------------------------------------|-----------|-----|--------------|------------------------------|-----------|
| 1 | 4405010585 | VITE COPERCHIO PREFILTRO | | 13 | 4405010134 | TAPPO RUOTA M8 SIN. | |
| 2 | 4405010702 | COPERCHIO PREFILTRO | | 14 | * 4405010596 | RUOTA 1 (III) HP | |
| 3 | 4405010178 | O-RING D 151,7X6,99 | | 14 | * 4405010600 | RUOTA 2 (III) HP | |
| 4 | 4405010105 | CESTO PREFILTRO | | 15 | 4405010487 | O-RING | |
| 5 | * 4405010106 | MANICOTTI DI UNIONE <= 1 HP | | 16 | 4405010118 | GUARNIZIONE MECCANICA | |
| 5 | * 4405010107 | MANICOTTI DI UNIONE 1,5 HP - 2,5 HP | | 17 | 4405010603 | FLANGIA TENUTA MECCANICA | |
| 6 | 4405010179 | GUERNIZIONE PIANA 72X55X2,5 | | 18 | * 4405010604 | FASCETTA MOTORE ANTERIORE | |
| 7 | 4405010586 | CORPO POMBA | | 18 | * 4405010607 | FASCETTA MOTORE ANTERIORE | |
| 8 | 4405010587 | TAPPO SCARICO | | 19 | * 4405010609 | CUSCINETTO MOTORE < 1 HP | |
| 9 | * 4405010588 | BASAMENTO POMPA | | 19 | * 4405010610 | CUSCINETTO MOTORE 1,5 - 3 HP | |
| 9 | * 4405010492 | BASAMENTO POMPA | | 20 | * 4405010144 | ASTAS MOTORE 0,75 - 1 HP | |
| 10 | 4405010590 | VITE FISSAGGIO CORPO | | 20 | * 4405010145 | ASTAS MOTORE 1,5 - 3 HP III | |
| 11 | 4405010161 | O-RING D 56,7X3,5 | | 21 | 4405010828 | COMANDO | |

* SI FACCIA RIFERIMENTO AL FOGLIO DELLE OSSERVAZIONI

CODICE **67547, 67548**

 DESCRIZIONE: **POMPA VICTORIA PLUS SILENT VS**

| | | | | | |
|----|--------------|--------------------------------------|----|--------------|--------------------------|
| 12 | 4405010116 | DIFFUSORE 1 HP - 2 HP | 22 | 4405010829 | CAVO COMANDO |
| 23 | 4405010830 | CASSETTA DISIPATORE | 25 | * 4405010832 | KIT VENTOLA-COPRIVENTOLA |
| 24 | * 4405010612 | COPERCHIO MOTORE MEC. C.71 C/CASSIEF | 26 | * 67547R4000 | MOTOR VS 1 HP |
| 24 | * 4405010614 | COPERCHIO MOTORE MEC. C.80 C/CASSIEF | 26 | * 67548R4000 | MOTOR VS 2 HP |
| 25 | * 4405010831 | KIT VENTOLA-COPRIVENTOLA | | | |

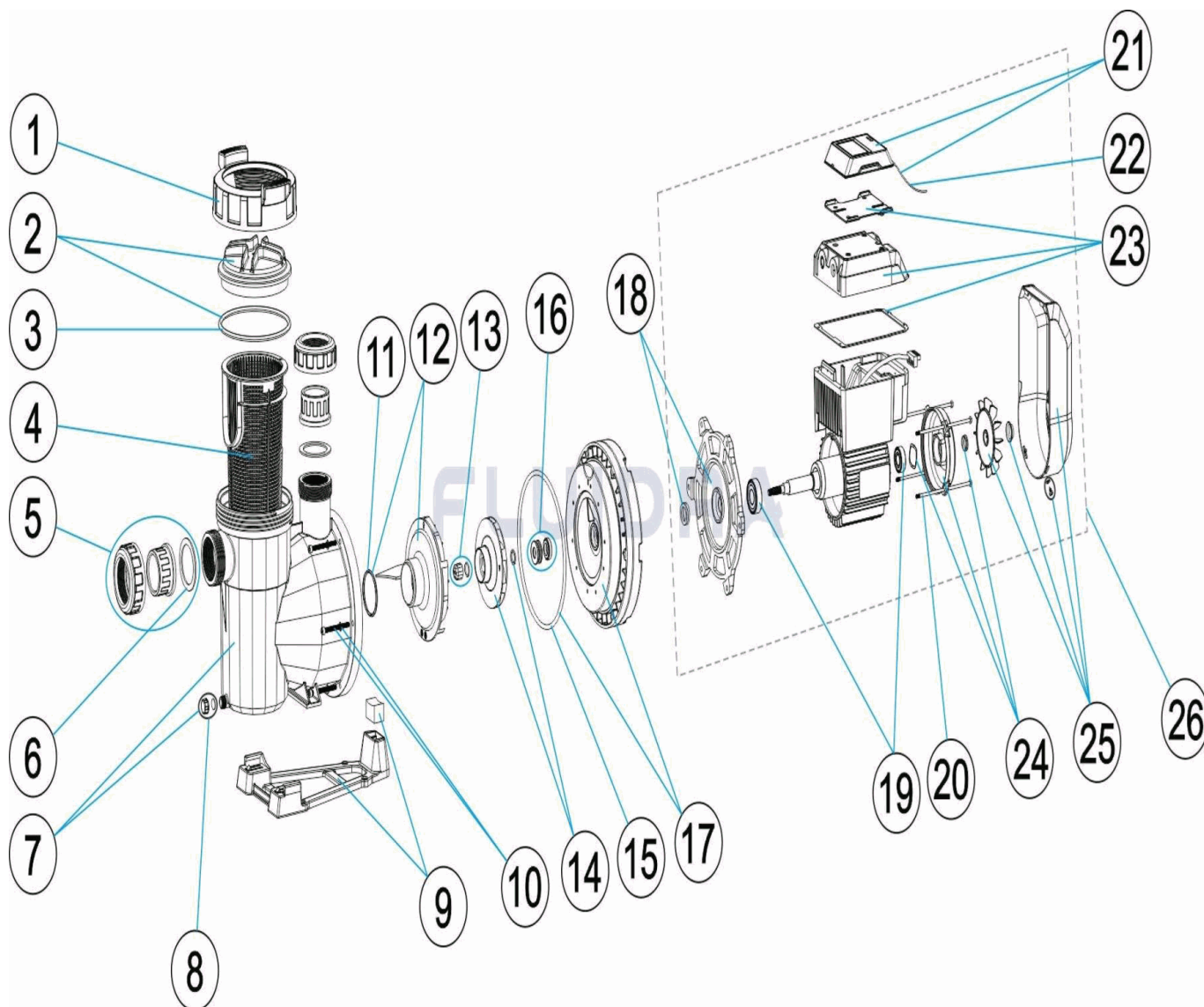
CODICE **67547, 67548**

 DESCRIZIONE: **POMPA VICTORIA PLUS SILENT VS**

OSSERVAZIONI

| POS | CODICE | OSSERVAZIONI |
|-----|------------|--------------|
| 5 | 4405010106 | PER: 67547 |
| 5 | 4405010107 | PER: 67548 |
| 9 | 4405010588 | PER: 67547 |
| 9 | 4405010492 | PER: 67548 |
| 14 | 4405010596 | PER: 67547 |
| 14 | 4405010600 | PER: 67548 |
| 18 | 4405010604 | PER: 67547 |
| 18 | 4405010607 | PER: 67548 |
| 19 | 4405010609 | PER: 67547 |
| 19 | 4405010610 | PER: 67548 |
| 20 | 4405010144 | PER: 67547 |
| 20 | 4405010145 | PER: 67548 |
| 24 | 4405010612 | PER: 67547 |
| 24 | 4405010614 | PER: 67548 |
| 25 | 4405010831 | PER: 67547 |
| 25 | 4405010832 | PER: 67548 |
| 26 | 67547R4000 | PER: 67547 |
| 26 | 67548R4000 | PER: 67548 |

CODE **67547, 67548**

 BESCHREIBUNG: **PUMPE VICTORIA PLUS SILENT VS**

DEUTSCH

| POS | CODE | BESCHREIBUNG | MENGE | POS | CODE | BESCHREIBUNG | MENGE |
|-----|--------------|----------------------------------|-------|-----|--------------|--------------------------------|-------|
| 1 | 4405010585 | MUTTER VORFILTERDECKEL | | 13 | 4405010134 | STOPFEN LAUFRAD M8 LINKS | |
| 2 | 4405010702 | VORFILTERDECKEL | | 14 | * 4405010596 | LAUFRAD 1 (III) HP | |
| 3 | 4405010178 | O-RING D. 151,7 X 6,99 | | 14 | * 4405010600 | LAUFRAD 2 (III) HP | |
| 4 | 4405010105 | VORFILTERKORB | | 15 | 4405010487 | O-RING | |
| 5 | * 4405010106 | ANSCHLUSSZUBEHÖR <= 1 HP | | 16 | 4405010118 | GLEITRINGDICHTUNG | |
| 5 | * 4405010107 | ANSCHLUSSZUBEHÖR 1,5 HP - 2,5 HP | | 17 | 4405010603 | GLEITRINGDICHTUNG | |
| 6 | 4405010179 | FLACHDICHTUNG 72 X 55 X 2,5 | | 18 | * 4405010604 | VORDERER MOTORFLANSCH | |
| 7 | 4405010586 | PUMPENGEHÄUSE | | 18 | * 4405010607 | VORDERER MOTORFLANSCH | |
| 8 | 4405010587 | ABLASSTOPFEN | | 19 | * 4405010609 | WÄLZLAGER MOTOR < 1 HP | |
| 9 | * 4405010588 | PUMPENFUSS | | 19 | * 4405010610 | WÄLZLAGER MOTOR 1,5 - 3 HP | |
| 9 | * 4405010492 | PUMPENFUSS | | 20 | * 4405010144 | RUNDEISEN MOTOR 0,75 - 1 HP | |
| 10 | 4405010590 | FIXIERSCHRAUBE GEHÄUSE | | 20 | * 4405010145 | RUNDEISEN MOTOR 1,5 - 3 HP III | |
| 11 | 4405010161 | O-RING D. 56,7 X 3,5 | | 21 | 4405010828 | REGLER | |

* SIEHE ANMERKUNGSBLATT

CODE **67547, 67548**

 BESCHREIBUNG: **PUMPE VICTORIA PLUS SILENT VS**

| | | | | | |
|----|--------------|--------------------------------------|----|--------------|----------------------------|
| 12 | 4405010116 | WASSERVERTEILER 1 HP - 2 HP | 22 | 4405010829 | KABEL REGLER |
| 23 | 4405010830 | GEHÄUSE AUSLÖSER | 25 | * 4405010832 | SET VENTILATOR - ABDECKUNG |
| 24 | * 4405010612 | MOTORDECKEL MECH. C.71 MIT RINGLAGEI | 26 | * 67547R4000 | MOTOR VS 1 HP |
| 24 | * 4405010614 | MOTORDECKEL MECH. C.80 MIT RINGLAGEI | 26 | * 67548R4000 | MOTOR VS 2 HP |
| 25 | * 4405010831 | SET VENTILATOR - ABDECKUNG | | | |

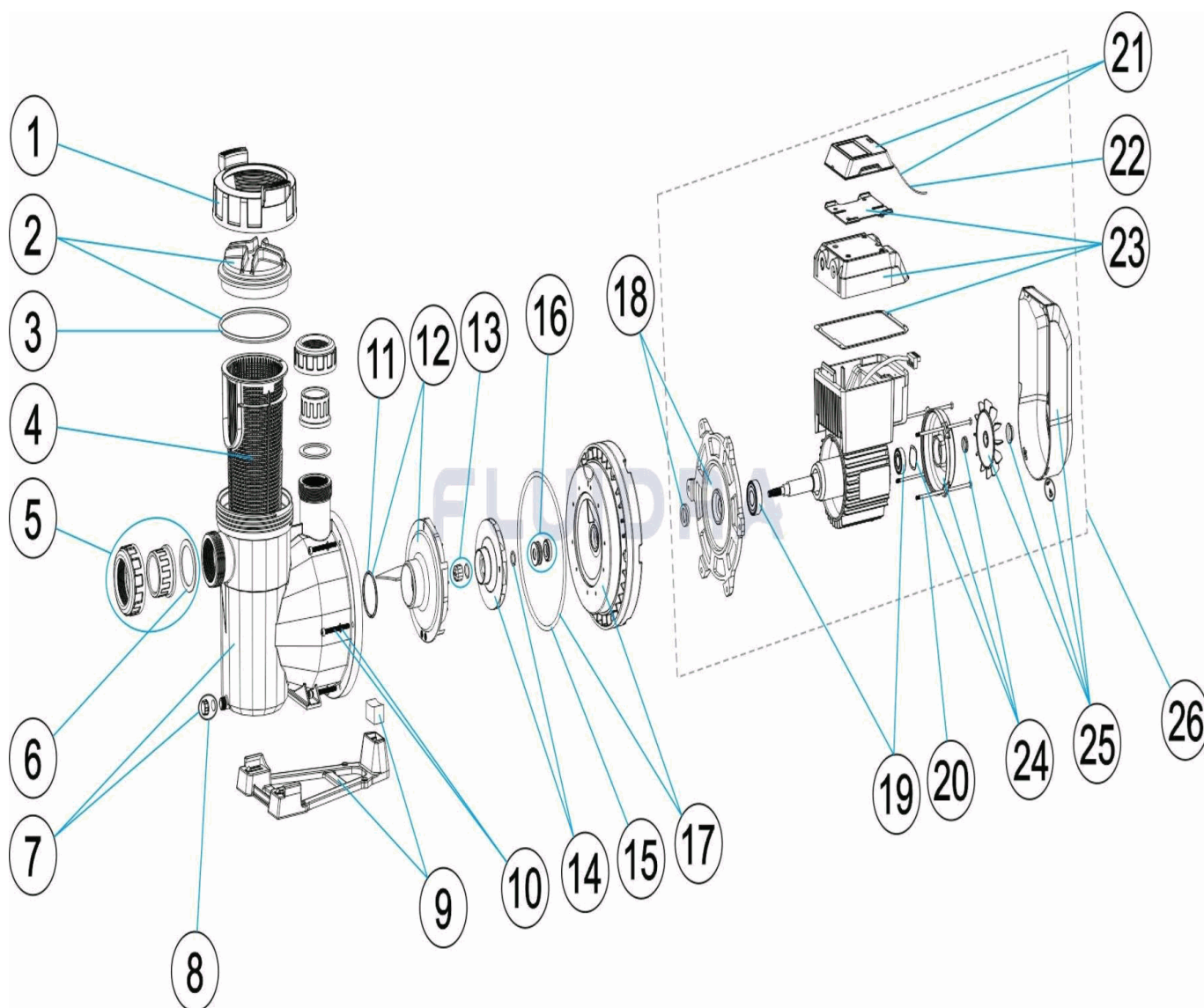
CODE **67547, 67548**

BESCHREIBUNG: **PUMPE VICTORIA PLUS SILENT VS**

HINWEISE

| POS | CODE | HINWEISE |
|-----|------------|------------|
| 5 | 4405010106 | FÜR: 67547 |
| 5 | 4405010107 | FÜR: 67548 |
| 9 | 4405010588 | FÜR: 67547 |
| 9 | 4405010492 | FÜR: 67548 |
| 14 | 4405010596 | FÜR: 67547 |
| 14 | 4405010600 | FÜR: 67548 |
| 18 | 4405010604 | FÜR: 67547 |
| 18 | 4405010607 | FÜR: 67548 |
| 19 | 4405010609 | FÜR: 67547 |
| 19 | 4405010610 | FÜR: 67548 |
| 20 | 4405010144 | FÜR: 67547 |
| 20 | 4405010145 | FÜR: 67548 |
| 24 | 4405010612 | FÜR: 67547 |
| 24 | 4405010614 | FÜR: 67548 |
| 25 | 4405010831 | FÜR: 67547 |
| 25 | 4405010832 | FÜR: 67548 |
| 26 | 67547R4000 | FÜR: 67547 |
| 26 | 67548R4000 | FÜR: 67548 |

CODIGO **67547, 67548**

 DESCRIÇÃO: **BOMBA VICTORIA PLUS SILENT VS**

PORTUGUES

| POS | CODIGO | DESCRIÇÃO | QUANTIDADE | POS | CODIGO | DESCRIÇÃO | QUANTIDADE |
|-----|--------------|-------------------------------------|------------|-----|--------------|------------------------------|------------|
| 1 | 4405010585 | PORCA TAMPA PRÉ-FILTRO | | 13 | 4405010134 | TAMPO RODÍZIO M8 ESQ. | |
| 2 | 4405010702 | TAMPA PRÉ-FILTRO | | 14 | * 4405010596 | RODÍZIO 1 (III) HP | |
| 3 | 4405010178 | JUNTA TÓRICA D 151,7X6,99 | | 14 | * 4405010600 | RODÍZIO 2 (III) HP | |
| 4 | 4405010105 | CESTO PRÉ-FILTRO | | 15 | 4405010487 | JUNTA TÓRICA | |
| 5 | * 4405010106 | ACESSÓRIOS DE UNIÃO <= 1 HP | | 16 | 4405010118 | JUNTA MECÂNICA | |
| 5 | * 4405010107 | ACESSÓRIOS DE UNIÃO 1,5 HP - 2,5 HP | | 17 | 4405010603 | FLANGE DO SELO MECÂNICO | |
| 6 | 4405010179 | JUNTA PLANA 72X55X2,5 | | 18 | * 4405010604 | FLANGE MOTOR DIANTEIRA | |
| 7 | 4405010586 | CORPO BOMBA | | 18 | * 4405010607 | FLANGE MOTOR DIANTEIRA | |
| 8 | 4405010587 | TAMPÃO PURGA | | 19 | * 4405010609 | ROLAMENTO MOTOR < 1 HP | |
| 9 | * 4405010588 | PÉ BOMBA | | 19 | * 4405010610 | ROLAMENTO MOTOR 1,5 - 3 HP | |
| 9 | * 4405010492 | PÉ BOMBA | | 20 | * 4405010144 | VARETAS MOTOR 0,75 - 1 HP | |
| 10 | 4405010590 | PARAFUSO M6X65 DIN 912 | | 20 | * 4405010145 | VARETAS MOTOR 1,5 - 3 HP III | |
| 11 | 4405010161 | JUNTA TÓRICA D 56,7X3,5 | | 21 | 4405010828 | COMANDO | |

* VEJA A FICHA DE OBSERVAÇÕES

CODIGO **67547, 67548**

DESCRIÇÃO: **BOMBA VICTORIA PLUS SILENT VS**

| | | | | | |
|----|--------------|-------------------------------------|----|--------------|----------------------------|
| 12 | 4405010116 | DIFUSOR 1 HP - 2 HP | 22 | 4405010829 | CABO COMANDO |
| 23 | 4405010830 | CAIXA DISSIPADOR | 25 | * 4405010832 | CONJUNTO VENTILLADOR-TAMPA |
| 24 | * 4405010612 | TAMPA MOTOR MEC. C.71 C/RANHURA D35 | 26 | * 67547R4000 | MOTOR VS 1 HP |
| 24 | * 4405010614 | TAMPA MOTOR MEC. C.80 C/RANHURA D47 | 26 | * 67548R4000 | MOTOR VS 2 HP |
| 25 | * 4405010831 | CONJUNTO VENTILLADOR-TAMPA | | | |

CODIGO **67547, 67548**

DESCRIÇÃO: **BOMBA VICTORIA PLUS SILENT VS**

OBSERVACÕES

| POS | CODIGO | OBSERVACÕES |
|-----|------------|-------------|
| 5 | 4405010106 | PARA: 67547 |
| 5 | 4405010107 | PARA: 67548 |
| 9 | 4405010588 | PARA: 67547 |
| 9 | 4405010492 | PARA: 67548 |
| 14 | 4405010596 | PARA: 67547 |
| 14 | 4405010600 | PARA: 67548 |
| 18 | 4405010604 | PARA: 67547 |
| 18 | 4405010607 | PARA: 67548 |
| 19 | 4405010609 | PARA: 67547 |
| 19 | 4405010610 | PARA: 67548 |
| 20 | 4405010144 | PARA: 67547 |
| 20 | 4405010145 | PARA: 67548 |
| 24 | 4405010612 | PARA: 67547 |
| 24 | 4405010614 | PARA: 67548 |
| 25 | 4405010831 | PARA: 67547 |
| 25 | 4405010832 | PARA: 67548 |
| 26 | 67547R4000 | PARA: 67547 |
| 26 | 67548R4000 | PARA: 67548 |