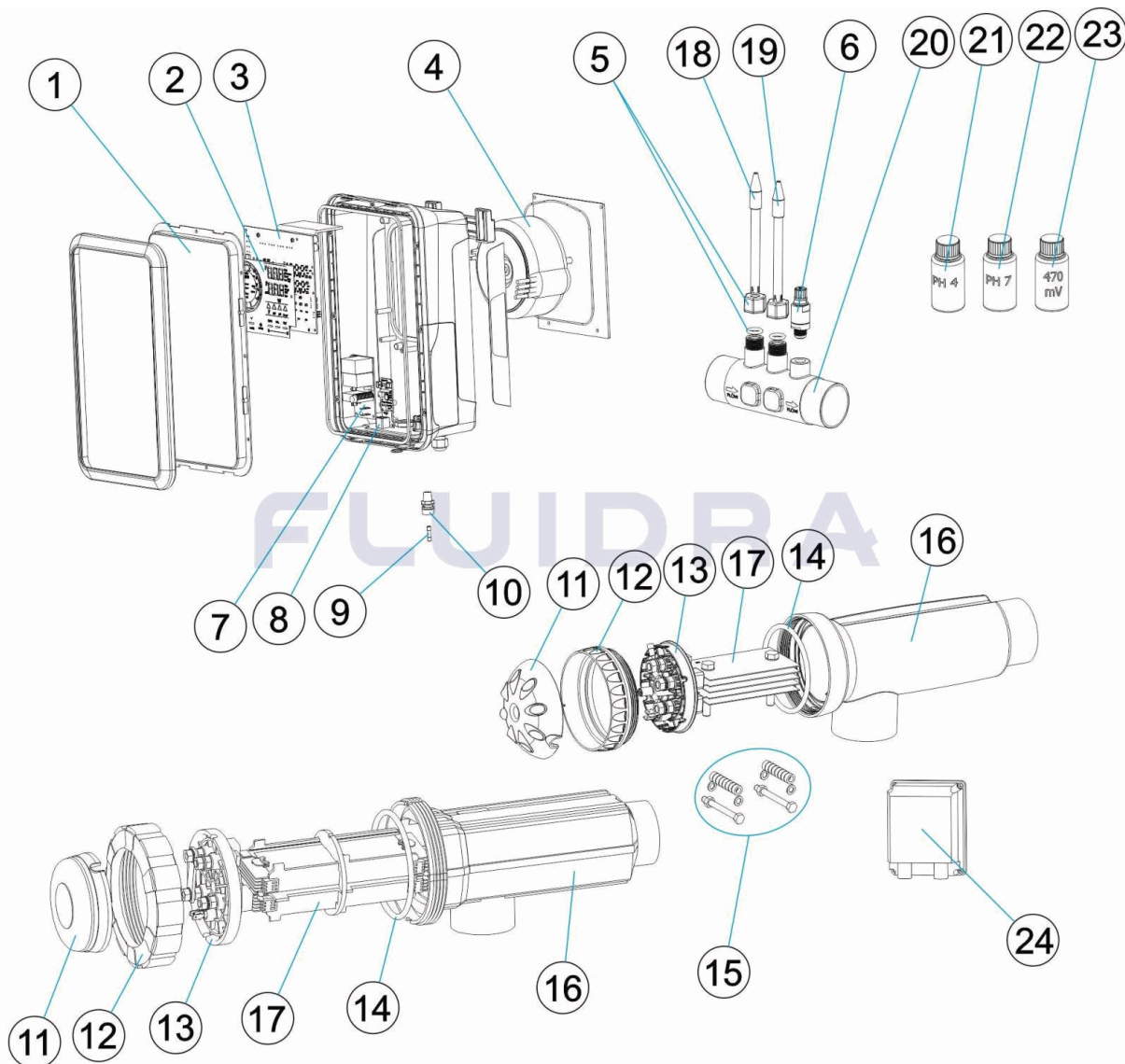


CODIGO **71692, 71693, 71694, 71695, 71696**

 DESCRIPCION: **SMART NEXT**

**ESPAÑOL**

| POS | CODIGO       | DESCRIPCION                   | CANTIDAD | POS | CODIGO       | DESCRIPCION                      | CANTIDAD |
|-----|--------------|-------------------------------|----------|-----|--------------|----------------------------------|----------|
| 1   | 4408060156   | CARATULA SMART NEXT           |          | 7   | 4408040327   | PBA FILTRO CONTROL PH            |          |
| 2   | 4408060157   | TECLADO SMART NEXT            |          | 8   | 4408040365   | PBA CONTROL ORP                  |          |
| 3   | * 4408040287 | TARJETA POTENCIA SMN-7        |          | 9   | * 4408041112 | FUSIBLE 1A                       |          |
| 3   | * 4408040288 | TARJETA POTENCIA SMN-12       |          | 9   | * 4408041113 | FUSIBLE 2A                       |          |
| 3   | * 4408040289 | TARJETA POTENCIA SMN-21       |          | 9   | * 4408041114 | FUSIBLE 3A                       |          |
| 3   | * 4408040290 | TARJETA POTENCIA SMN-30       |          | 9   | * 4408041204 | FUSIBLE 4A                       |          |
| 3   | * 4408040291 | TARJETA POTENCIA SMN-40       |          | 10  | 4408040523   | PORTAFUSIBLE 5X20 CHASIS         |          |
| 4   | * 4408040265 | TRANSFORMADOR 110VA           |          | 11  | * 4408041117 | TAPA PROTECCION CONTACTOS        |          |
| 4   | * 4408040266 | TRANSFORMADOR 190VA           |          | 11  | * 4408040509 | PROTECTOR CONTACTOS              |          |
| 4   | * 4408040267 | TRANSFORMADOR 230VA           |          | 12  | * 4408041123 | ANILLO ROSCADO CELULA            |          |
| 4   | * 4408040268 | TRANSFORMADOR 340VA           |          | 12  | * 4408040508 | TUERCA CIERRE CELULA             |          |
| 4   | * 4408040269 | TRANSFORMADOR 440VA           |          | 13  | * 4408040074 | SOPORTE ELECTRODO ABIERTO SM/SM+ |          |
| 5   | 4408040604   | PORTAELECTRODOS PE 12M/M-1/2" |          | 13  | * 4408040272 | SOPORTE ELECTRODO BIP            |          |

CODIGO **71692, 71693, 71694, 71695, 71696**

 DESCRIPCION: **SMART NEXT**

|    |              |                                  |    |              |                                 |
|----|--------------|----------------------------------|----|--------------|---------------------------------|
| 6  | 4408040068   | VALVULA INYECCION PH-MINUS 3/8"  | 14 | * 4408041118 | JUNTA TORICA CIERRE             |
| 14 | * 4408040510 | JUNTA VASO EPDM.                 | 17 | * 70315      | RECAMBIO ELECTRODO              |
| 15 | * 4408040073 | KIT ANCLAJE ELECTRODOS DOMESTICO | 18 | 60648        | ELECTRODO COMBINADO PH          |
| 16 | * 4408041122 | CUERPO CELULA                    | 19 | 60649        | ELECTRODO ORP                   |
| 16 | * 57655      | CELULA PORTA ELECTRODOS          | 20 | 70968        | PORTASONDAS                     |
| 17 | * 60595      | RECAMBIO ELECTRODO               | 21 | 60632        | TAMPON PH 4,0 50 ML. (ROJO)     |
| 17 | * 60596      | RECAMBIO ELECTRODO               | 22 | 60618        | TAMPON PH 7,0 50 M/L. (VERDE)   |
| 17 | * 70312      | RECAMBIO ELECTRODO               | 23 | 60633        | SOLUCION CALIBRACION 470MV.     |
| 17 | * 70314      | RECAMBIO ELECTRODO               | 24 | 70054        | BOMBA PERISTALTICA 1,5-1,5 230V |

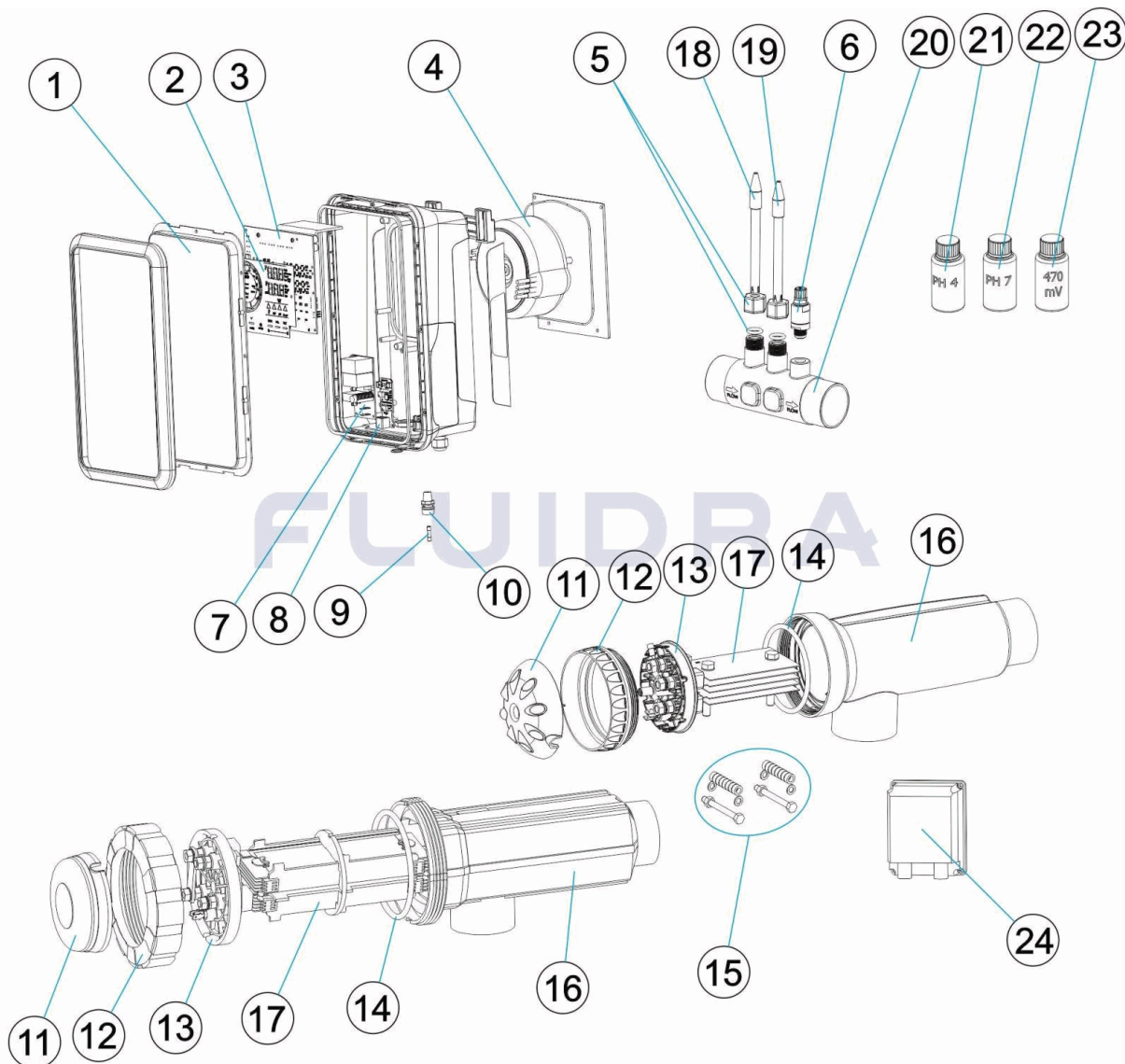
CODIGO **71692, 71693, 71694, 71695, 71696**

DESCRIPCION: **SMART NEXT**

## OBSERVACIONES

| POS | CODIGO     | OBSERVACIONES             |
|-----|------------|---------------------------|
| 3   | 4408040287 | PARA: 71692               |
| 3   | 4408040288 | PARA: 71693               |
| 3   | 4408040289 | PARA: 71694               |
| 3   | 4408040290 | PARA: 71695               |
| 3   | 4408040291 | PARA: 71696               |
| 4   | 4408040265 | PARA: 71692               |
| 4   | 4408040266 | PARA: 71693               |
| 4   | 4408040267 | PARA: 71694               |
| 4   | 4408040268 | PARA: 71695               |
| 4   | 4408040269 | PARA: 71696               |
| 9   | 4408041112 | PARA: 71692               |
| 9   | 4408041113 | PARA: 71693, 71694        |
| 9   | 4408041114 | PARA: 71695               |
| 9   | 4408041204 | PARA: 71696               |
| 11  | 4408041117 | PARA: 71692, 71693        |
| 11  | 4408040509 | PARA: 71694, 71695, 71696 |
| 12  | 4408041123 | PARA: 71692, 71693        |
| 12  | 4408040508 | PARA: 71694, 71695, 71696 |
| 13  | 4408040074 | PARA: 71692, 71693        |
| 13  | 4408040272 | PARA: 71694, 71695, 71696 |
| 14  | 4408041118 | PARA: 71692, 71693        |
| 14  | 4408040510 | PARA: 71694, 71695, 71696 |
| 15  | 4408040073 | PARA: 71692, 71693        |
| 16  | 4408041122 | PARA: 71692, 71693        |
| 16  | 57655      | PARA: 71694, 71695, 71696 |
| 17  | 60595      | PARA: 71692               |
| 17  | 60596      | PARA: 71693               |
| 17  | 70312      | PARA: 71694               |
| 17  | 70314      | PARA: 71695               |
| 17  | 70315      | PARA: 71696               |

CODE **71692, 71693, 71694, 71695, 71696**

 DESCRIPTION: **SMART NEXT**

**FRANCAIS**

| POS | CODE       | DESCRIPTION                    | QUANTITE | POS | CODE       | DESCRIPTION                      | QUANTITE |
|-----|------------|--------------------------------|----------|-----|------------|----------------------------------|----------|
| 1   | 4408060156 | COUVERCLE SMART NEXT           |          | 7   | 4408040327 | PBA FILTRE CONTRÔLE PH           |          |
| 2   | 4408060157 | CLAVIER SMART NEXT             |          | 8   | 4408040365 | PBA CONTRÔLE ORP                 |          |
| 3   | 4408040287 | CARTE PUISSANCE SMN-7          |          | 9   | 4408041112 | FUSIBLE 1A                       |          |
| 3   | 4408040288 | CARTE PUISSANCE SMN-12         |          | 9   | 4408041113 | FUSIBLE 2A                       |          |
| 3   | 4408040289 | CARTE PUISSANCE SMN-21         |          | 9   | 4408041114 | FUSIBLE 3A                       |          |
| 3   | 4408040290 | CARTE PUISSANCE SMN-30         |          | 9   | 4408041204 | FUSIBLE 4A                       |          |
| 3   | 4408040291 | CARTE PUISSANCE SMN-40         |          | 10  | 4408040523 | PORTE-FUSIBLES 5X20 CHASSIS      |          |
| 4   | 4408040265 | TRANSFORMATEUR PUISSANCE 110VA |          | 11  | 4408041117 | COUVERCLE PROTECTION CONTACTS    |          |
| 4   | 4408040266 | TRANSFORMATEUR PUISSANCE 190VA |          | 11  | 4408040509 | PROTECTEUR CONTACTS              |          |
| 4   | 4408040267 | TRANSFORMATEUR PUISSANCE 230VA |          | 12  | 4408041123 | ANNEAU FILETÉ CELLULE            |          |
| 4   | 4408040268 | TRANSFORMATEUR PUISSANCE 340VA |          | 12  | 4408040508 | ECRU FERMETURE CELLULE           |          |
| 4   | 4408040269 | TRANSFORMATEUR PUISSANCE 440VA |          | 13  | 4408040074 | ÉLECTRODES DE RECHANGE SUPPORT C |          |
| 5   | 4408040604 | PORTE-ÉLECTRODE PE 12M/M. 1/2" |          | 13  | 4408040272 | ÉLECTRODES DE RECHANGE SUPPORT E |          |

\* VOIR FICHE D'OBSERVATIONS

CODE **71692, 71693, 71694, 71695, 71696**

DESCRIPTION: **SMART NEXT**

|    |              |                               |    |              |                                  |
|----|--------------|-------------------------------|----|--------------|----------------------------------|
| 6  | 4408040068   | VANNE INJECTION PH-MINUS 3/8" | 14 | * 4408041118 | JOINT TORIQUE CELLULE            |
| 14 | * 4408040510 | JOINT VASE EPDM               | 17 | * 70315      | RECHANGE ÉLECTRODE               |
| 15 | * 4408040073 | KIT ANCRAGE ÉLECTRODES KIT    | 18 | 60648        | ELECTRODE COMBINÉE PH            |
| 16 | * 4408041122 | CORPS CELLULE                 | 19 | 60649        | ELECTRODE ORP                    |
| 16 | * 57655      | CELLULE PORTE-ÉLECTRODE       | 20 | 70968        | PORTE-SONDES                     |
| 17 | * 60595      | RECHANGE ÉLECTRODE            | 21 | 60632        | TAMPON PH 4,0 50 ML. (ROUGE)     |
| 17 | * 60596      | RECHANGE ÉLECTRODE            | 22 | 60618        | TAMPON PH 7,0 50 M/L. (VERT)     |
| 17 | * 70312      | RECHANGE ÉLECTRODE            | 23 | 60633        | SOLUTION CALIBRAGE 470 MV        |
| 17 | * 70314      | RECHANGE ÉLECTRODE            | 24 | 70054        | POMPE PÉRISTALTIQUE 1,5-1,5 230V |

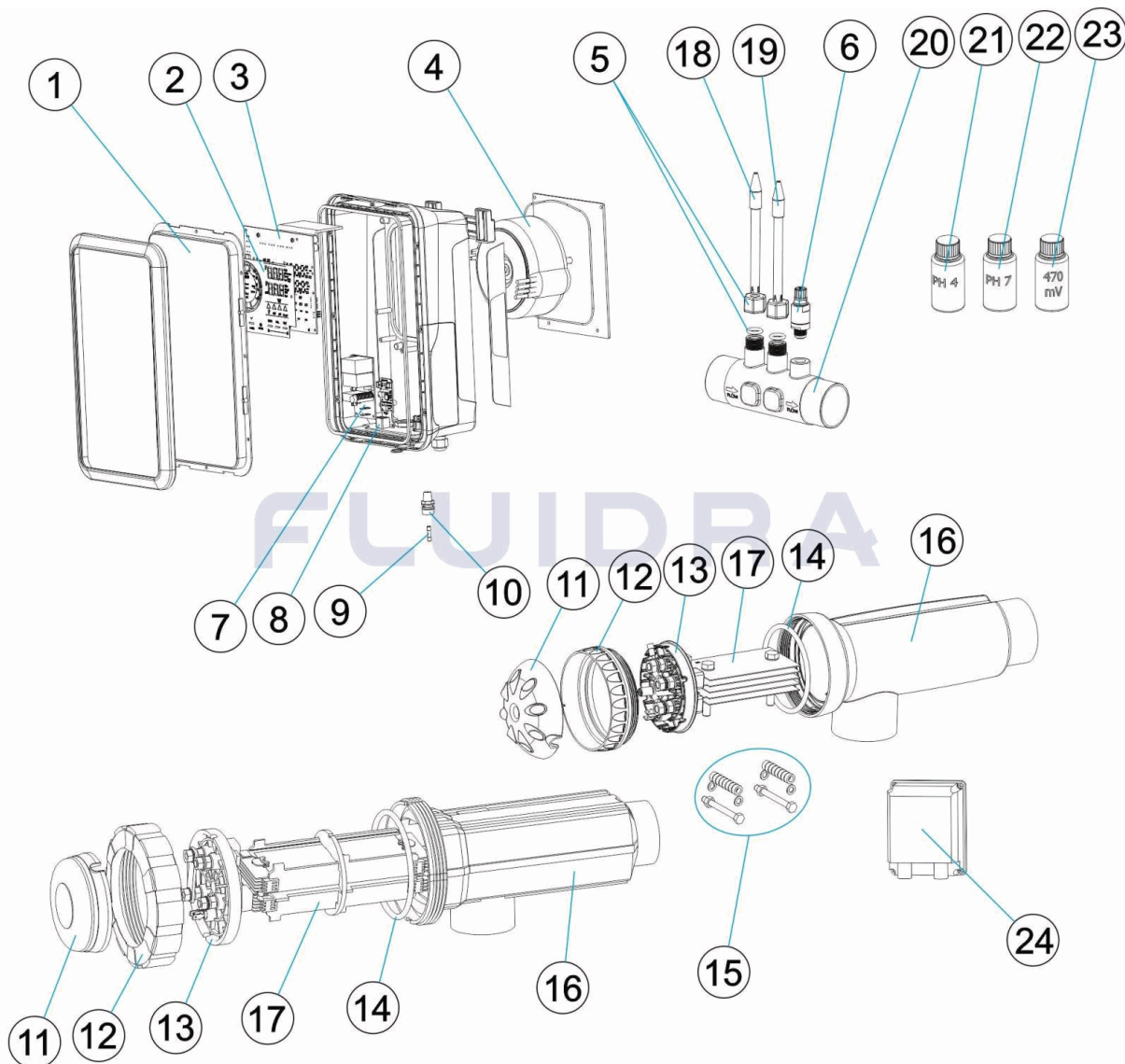
CODE **71692, 71693, 71694, 71695, 71696**

DESCRIPTION: **SMART NEXT**

## OBSERVATIONS

| POS | CODE       | OBSERVATIONS              |
|-----|------------|---------------------------|
| 3   | 4408040287 | POUR: 71692               |
| 3   | 4408040288 | POUR: 71693               |
| 3   | 4408040289 | POUR: 71694               |
| 3   | 4408040290 | POUR: 71695               |
| 3   | 4408040291 | POUR: 71696               |
| 4   | 4408040265 | POUR: 71692               |
| 4   | 4408040266 | POUR: 71693               |
| 4   | 4408040267 | POUR: 71694               |
| 4   | 4408040268 | POUR: 71695               |
| 4   | 4408040269 | POUR: 71696               |
| 9   | 4408041112 | POUR: 71692               |
| 9   | 4408041113 | POUR: 71693, 71694        |
| 9   | 4408041114 | POUR: 71695               |
| 9   | 4408041204 | POUR: 71696               |
| 11  | 4408041117 | POUR: 71692, 71693        |
| 11  | 4408040509 | POUR: 71694, 71695, 71696 |
| 12  | 4408041123 | POUR: 71692, 71693        |
| 12  | 4408040508 | POUR: 71694, 71695, 71696 |
| 13  | 4408040074 | POUR: 71692, 71693        |
| 13  | 4408040272 | POUR: 71694, 71695, 71696 |
| 14  | 4408041118 | POUR: 71692, 71693        |
| 14  | 4408040510 | POUR: 71694, 71695, 71696 |
| 15  | 4408040073 | POUR: 71692, 71693        |
| 16  | 4408041122 | POUR: 71692, 71693        |
| 16  | 57655      | POUR: 71694, 71695, 71696 |
| 17  | 60595      | POUR: 71692               |
| 17  | 60596      | POUR: 71693               |
| 17  | 70312      | POUR: 71694               |
| 17  | 70314      | POUR: 71695               |
| 17  | 70315      | POUR: 71696               |

CODE **71692, 71693, 71694, 71695, 71696**

 DESCRIPTION: **SMART NEXT**


## ENGLISH

| POS | CODE         | DESCRIPTION                      | QUANTITY | POS | CODE         | DESCRIPTION                | QUANTITY |
|-----|--------------|----------------------------------|----------|-----|--------------|----------------------------|----------|
| 1   | 4408060156   | SMART NEXT COVER                 |          | 7   | 4408040327   | PBA FILTER CONTROL PH      |          |
| 2   | 4408060157   | SMART NEXT KEYPAD                |          | 8   | 4408040365   | PBA CONTROL ORP            |          |
| 3   | * 4408040287 | POWER CARD SMN-7                 |          | 9   | * 4408041112 | FUSE 1A                    |          |
| 3   | * 4408040288 | POWER CARD SMN-12                |          | 9   | * 4408041113 | FUSE 2A                    |          |
| 3   | * 4408040289 | POWER CARD SMN-21                |          | 9   | * 4408041114 | FUSE 3A                    |          |
| 3   | * 4408040290 | POWER CARD SMN-30                |          | 9   | * 4408041204 | FUSE 4A                    |          |
| 3   | * 4408040291 | POWER CARD SMN-40                |          | 10  | 4408040523   | FUSE HOLDER 5X20           |          |
| 4   | * 4408040265 | POWER TRANSFORMER 110 VA         |          | 11  | * 4408041117 | CONTACT PROTECTION COVER   |          |
| 4   | * 4408040266 | POWER TRANSFORMER 190 VA         |          | 11  | * 4408040509 | CONTACT PROTECTION         |          |
| 4   | * 4408040267 | POWER TRANSFORMER 230 VA         |          | 12  | * 4408041123 | CELL THREADED RING         |          |
| 4   | * 4408040268 | POWER TRANSFORMER 340 VA         |          | 12  | * 4408040508 | CLOSINGNUT FOR CELL        |          |
| 4   | * 4408040269 | POWER TRANSFORMER 440 VA         |          | 13  | * 4408040074 | SM/SM+/EL ELECTRODE HOLDER |          |
| 5   | 4408040604   | ELECTRODE CARRIER PE 12M/M.-1/2" |          | 13  | * 4408040272 | BIP ELECTRODE HOLDER       |          |

\* SEE OBSERVATIONS SHEET

CODE **71692, 71693, 71694, 71695, 71696**

DESCRIPTION: **SMART NEXT**

|    |              |                               |    |              |  |
|----|--------------|-------------------------------|----|--------------|--|
| 6  | 4408040068   | PH-MINUS INJECTION VALVE 3/8" | 14 | * 4408041118 | CELL O-RING                            |
| 14 | * 4408040510 | GASKET EPDM FÜR ZELLE         | 17 | * 70315      | ELECTRODE SPARE                        |
| 15 | * 4408040073 | ELECTRODE FIXING KIT          | 18 | 60648        | ELECTRODE PH                           |
| 16 | * 4408041122 | CELL BODY                     | 19 | 60649        | ORP ELECTRODE                          |
| 16 | * 57655      | ELECTRODE CELL                | 20 | 70968        | SENSOR HOLDER                          |
| 17 | * 60595      | ELECTRODE SPARE               | 21 | 60632        | CALIBRATION SOLUTION PH 4,0 50 ML. (RI |
| 17 | * 60596      | ELECTRODE SPARE               | 22 | 60618        | CALIBRATION SOLUTION PH 7,0 50 ML. (G  |
| 17 | * 70312      | ELECTRODE SPARE               | 23 | 60633        | CALIBRATION SOLUTION ORP 470 MV        |
| 17 | * 70314      | ELECTRODE SPARE               | 24 | 70054        | PERISTALTIC PUMP 1,5-1,5 230V          |

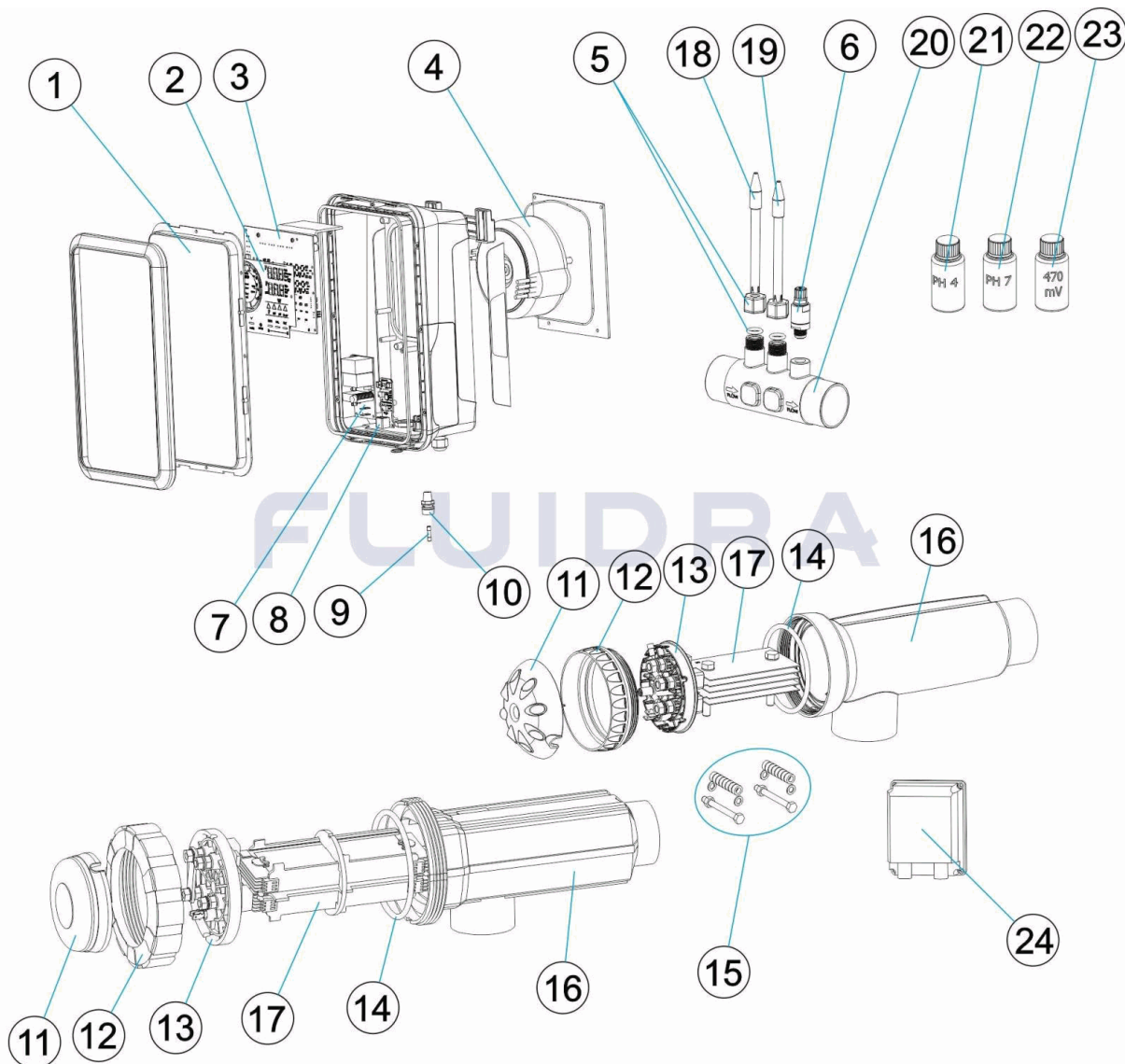
CODE **71692, 71693, 71694, 71695, 71696**

DESCRIPTION: **SMART NEXT**

## OBSERVATIONS

| POS | CODE       | OBSERVATIONS             |
|-----|------------|--------------------------|
| 3   | 4408040287 | FOR: 71692               |
| 3   | 4408040288 | FOR: 71693               |
| 3   | 4408040289 | FOR: 71694               |
| 3   | 4408040290 | FOR: 71695               |
| 3   | 4408040291 | FOR: 71696               |
| 4   | 4408040265 | FOR: 71692               |
| 4   | 4408040266 | FOR: 71693               |
| 4   | 4408040267 | FOR: 71694               |
| 4   | 4408040268 | FOR: 71695               |
| 4   | 4408040269 | FOR: 71696               |
| 9   | 4408041112 | FOR: 71692               |
| 9   | 4408041113 | FOR: 71693, 71694        |
| 9   | 4408041114 | FOR: 71695               |
| 9   | 4408041204 | FOR: 71696               |
| 11  | 4408041117 | FOR: 71692, 71693        |
| 11  | 4408040509 | FOR: 71694, 71695, 71696 |
| 12  | 4408041123 | FOR: 71692, 71693        |
| 12  | 4408040508 | FOR: 71694, 71695, 71696 |
| 13  | 4408040074 | FOR: 71692, 71693        |
| 13  | 4408040272 | FOR: 71694, 71695, 71696 |
| 14  | 4408041118 | FOR: 71692, 71693        |
| 14  | 4408040510 | FOR: 71694, 71695, 71696 |
| 15  | 4408040073 | FOR: 71692, 71693        |
| 16  | 4408041122 | FOR: 71692, 71693        |
| 16  | 57655      | FOR: 71694, 71695, 71696 |
| 17  | 60595      | FOR: 71692               |
| 17  | 60596      | FOR: 71693               |
| 17  | 70312      | FOR: 71694               |
| 17  | 70314      | FOR: 71695               |
| 17  | 70315      | FOR: 71696               |

CODICE **71692, 71693, 71694, 71695, 71696**

 DESCRIZIONE: **SMART NEXT**

**ITALIANO**

| POS | CODICE     | DESCRIZIONE                    | QUANTITA' | POS | CODICE     | DESCRIZIONE                         | QUANTITA' |
|-----|------------|--------------------------------|-----------|-----|------------|-------------------------------------|-----------|
| 1   | 4408060156 | COPERCHIO SMART NEXT           |           | 7   | 4408040327 | PBA FILTRO PH                       |           |
| 2   | 4408060157 | TASTIERA SMART NEXT            |           | 8   | 4408040365 | PBA ORP                             |           |
| 3   | 4408040287 | CARTA POTENZA SMN-7            |           | 9   | 4408041112 | FUSIVILE 1A                         |           |
| 3   | 4408040288 | CARTA POTENZA SMN-12           |           | 9   | 4408041113 | FUSIVILE 2A                         |           |
| 3   | 4408040289 | CARTA POTENZA SMN-21           |           | 9   | 4408041114 | FUSIVILE 3A                         |           |
| 3   | 4408040290 | CARTA POTENZA SMN-30           |           | 9   | 4408041204 | FUSIVILE 4A                         |           |
| 3   | 4408040291 | CARTA POTENZA SMN-40           |           | 10  | 4408040523 | PORTAFUSIBILI 5X20 CORPO            |           |
| 4   | 4408040265 | TRANSFORMATORE POTENZA 110 VA  |           | 11  | 4408041117 | COPERCHIO PROTEZIONE CONTATTI       |           |
| 4   | 4408040266 | TRANSFORMATORE POTENZA 190 VA  |           | 11  | 4408040509 | PROTECTOR CONTATTI                  |           |
| 4   | 4408040267 | TRANSFORMATORE POTENZA 230 VA  |           | 12  | 4408041123 | ANELLO FILETTATO CELLA              |           |
| 4   | 4408040268 | TRANSFORMATORE POTENZA 340 VA  |           | 12  | 4408040508 | GHIRA CHIUSURA CELLA                |           |
| 4   | 4408040269 | TRANSFORMATORE POTENZA 440 VA  |           | 13  | 4408040074 | ELETTRODI DI RICAMBIO RICHIESTA SOS |           |
| 5   | 4408040604 | PORTAELETTODO PE 12M/M. X 1/2" |           | 13  | 4408040272 | ELETTRODI DI RICAMBIO SOSTEGNO BIP  |           |

\* SI FACCIA RIFERIMENTO AL FOGLIO DELLE OSSERVAZIONI

CODICE **71692, 71693, 71694, 71695, 71696**

 DESCRIZIONE: **SMART NEXT**

|    |              |                                 |    |              |                                       |
|----|--------------|---------------------------------|----|--------------|---------------------------------------|
| 6  | 4408040068   | VALVOLA INIEZIONE PH-MINUS 3/8" | 14 | * 4408041118 | GIUNTA TORICA CELLULA                 |
| 14 | * 4408040510 | GUARNICIONE COPERCHIO CELLA     | 17 | * 70315      | RECAMBIO ELETTRODO                    |
| 15 | * 4408040073 | ELETTRODI KIT ANCORAGGIO        | 18 | 60648        | ELETTRODO COMBINATO PH                |
| 16 | * 4408041122 | CORPO CELLULA                   | 19 | 60649        | ELETTRODO RX                          |
| 16 | * 57655      | CELLA PORTAELETTRODI            | 20 | 70968        | PORTA-SONDE                           |
| 17 | * 60595      | RECAMBIO ELETTRODO              | 21 | 60632        | SOLUZIONE TAMPONE PH 4,0 50 ML. (RO)  |
| 17 | * 60596      | RECAMBIO ELETTRODO              | 22 | 60618        | SOLUZIONE TAMPONE PH 7,0 50 M/L. (VEI |
| 17 | * 70312      | RECAMBIO ELETTRODO              | 23 | 60633        | SOLUZIONE CALIBRAZIONE 470MV.         |
| 17 | * 70314      | RECAMBIO ELETTRODO              | 24 | 70054        | POMPA PERISTALTICA 1,5-1,5 230V       |

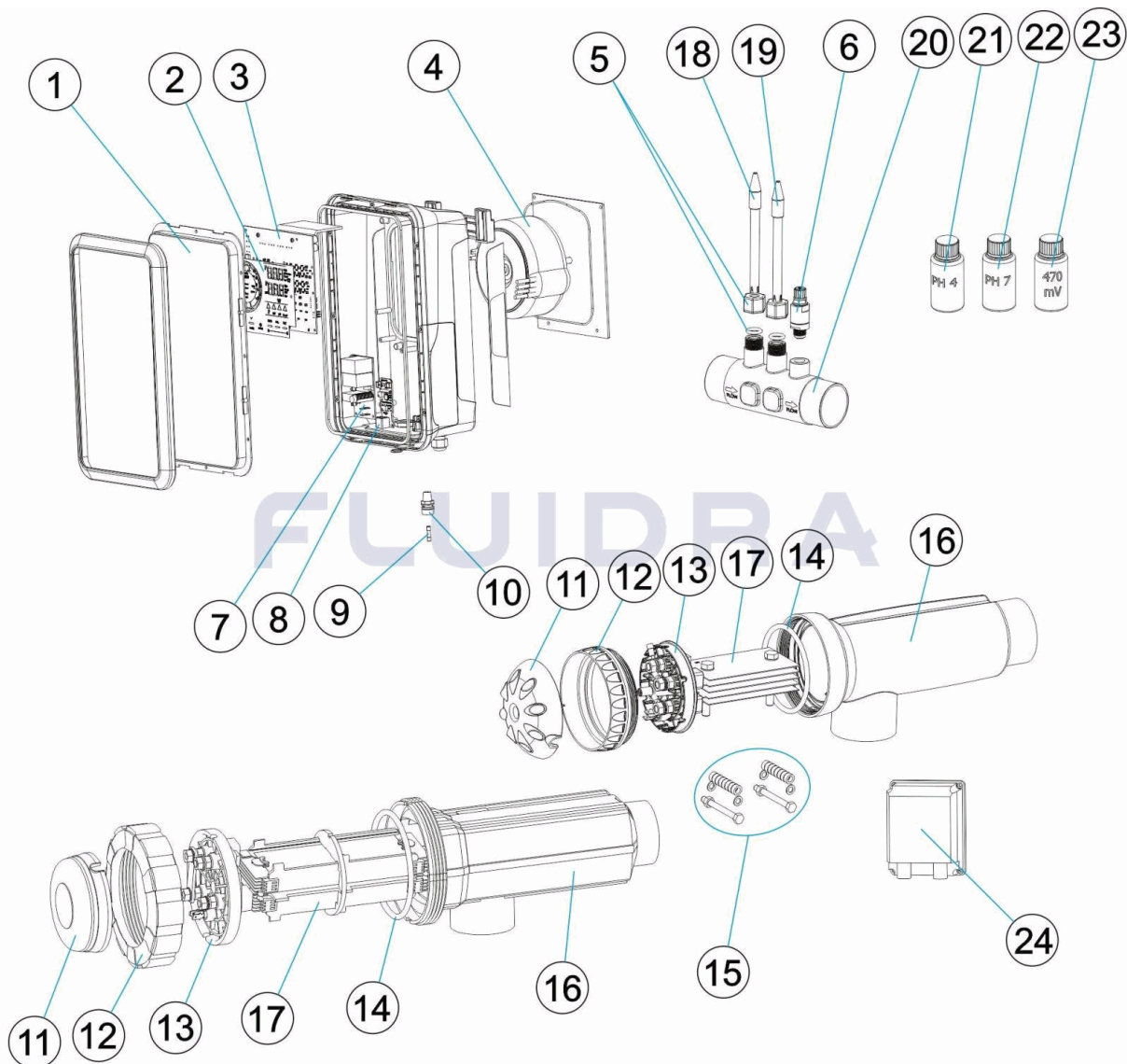
CODICE **71692, 71693, 71694, 71695, 71696**

DESCRIZIONE: **SMART NEXT**

## OSSERVAZIONI

| POS | CODICE     | OSSERVAZIONI             |
|-----|------------|--------------------------|
| 3   | 4408040287 | PER: 71692               |
| 3   | 4408040288 | PER: 71693               |
| 3   | 4408040289 | PER: 71694               |
| 3   | 4408040290 | PER: 71695               |
| 3   | 4408040291 | PER: 71696               |
| 4   | 4408040265 | PER: 71692               |
| 4   | 4408040266 | PER: 71693               |
| 4   | 4408040267 | PER: 71694               |
| 4   | 4408040268 | PER: 71695               |
| 4   | 4408040269 | PER: 71696               |
| 9   | 4408041112 | PER: 71692               |
| 9   | 4408041113 | PER: 71693, 71694        |
| 9   | 4408041114 | PER: 71695               |
| 9   | 4408041204 | PER: 71696               |
| 11  | 4408041117 | PER: 71692, 71693        |
| 11  | 4408040509 | PER: 71694, 71695, 71696 |
| 12  | 4408041123 | PER: 71692, 71693        |
| 12  | 4408040508 | PER: 71694, 71695, 71696 |
| 13  | 4408040074 | PER: 71692, 71693        |
| 13  | 4408040272 | PER: 71694, 71695, 71696 |
| 14  | 4408041118 | PER: 71692, 71693        |
| 14  | 4408040510 | PER: 71694, 71695, 71696 |
| 15  | 4408040073 | PER: 71692, 71693        |
| 16  | 4408041122 | PER: 71692, 71693        |
| 16  | 57655      | PER: 71694, 71695, 71696 |
| 17  | 60595      | PER: 71692               |
| 17  | 60596      | PER: 71693               |
| 17  | 70312      | PER: 71694               |
| 17  | 70314      | PER: 71695               |
| 17  | 70315      | PER: 71696               |

CODE **71692, 71693, 71694, 71695, 71696**

 BESCHREIBUNG: **SMART NEXT**

**DEUTSCH**

| POS | CODE         | BESCHREIBUNG                 | MENGE | POS | CODE         | BESCHREIBUNG                      | MENGE |
|-----|--------------|------------------------------|-------|-----|--------------|-----------------------------------|-------|
| 1   | 4408060156   | BEDIENFELD SMART NEXT        |       | 7   | 4408040327   | PBA FILTERSTEUERUNG PH            |       |
| 2   | 4408060157   | TASTATUR SMART NEXT          |       | 8   | 4408040365   | PBA STEUERUNG ORP                 |       |
| 3   | * 4408040287 | LEISTUNGSPLATINE SMN-7       |       | 9   | * 4408041112 | SICHERUNG 1 A                     |       |
| 3   | * 4408040288 | LEISTUNGSPLATINE SMN-12      |       | 9   | * 4408041113 | SICHERUNG 2 A                     |       |
| 3   | * 4408040289 | LEISTUNGSPLATINE SMN-21      |       | 9   | * 4408041114 | SICHERUNG 3 A                     |       |
| 3   | * 4408040290 | LEISTUNGSPLATINE SMN-30      |       | 9   | * 4408041204 | SICHERUNG 4 A                     |       |
| 3   | * 4408040291 | LEISTUNGSPLATINE SMN-40      |       | 10  | 4408040523   | SICHERUNGSSITZ 5 X 20 RAHMEN      |       |
| 4   | * 4408040265 | TRAFO 110 VA                 |       | 11  | * 4408041117 | SICHERHEITSABDECKUNG KONTAKTE     |       |
| 4   | * 4408040266 | TRAFO 190 VA                 |       | 11  | * 4408040509 | KONTAKTSCHUTZ                     |       |
| 4   | * 4408040267 | TRAFO 230 VA                 |       | 12  | * 4408041123 | GEWINDERING ZELLE                 |       |
| 4   | * 4408040268 | TRAFO 340 VA                 |       | 12  | * 4408040508 | MUTTER SCHLISSVORRICHTUNG ZELLE   |       |
| 4   | * 4408040269 | TRAFO 440 VA                 |       | 13  | * 4408040074 | HALTERUNG ELEKTRODE OFFEN SM / SM |       |
| 5   | 4408040604   | ELEKTRODENSITZ PE 12 MM-1/2" |       | 13  | * 4408040272 | HALTERUNG ELEKTRODE BIP           |       |

\* SIEHE ANMERKUNGSBLATT

CODE **71692, 71693, 71694, 71695, 71696**

 BESCHREIBUNG: **SMART NEXT**

|    |              |                              |    |              |                                |
|----|--------------|------------------------------|----|--------------|--------------------------------|
| 6  | 4408040068   | INJEKTORVENTIL PH-MINUS 3/8" | 14 | * 4408041118 | SCHLIESSRING                   |
| 14 | * 4408040510 | DICHTUNG GEHÄUSE EPDM.       | 17 | * 70315      | ERSATZTEIL ELEKTRODE           |
| 15 | * 4408040073 | KIT VERANKERUNG ELEKTRODEN   | 18 | 60648        | ELEKTRODE KOMBINIERT PH        |
| 16 | * 4408041122 | GEHÄUSE ZELLE                | 19 | 60649        | ORP-ELEKTRODE                  |
| 16 | * 57655      | ELEKTRODENZELLE              | 20 | 70968        | SONDENHALTERUNG                |
| 17 | * 60595      | ERSATZTEIL ELEKTRODE         | 21 | 60632        | PUFFER PH 4,0 50 ML (ROT)      |
| 17 | * 60596      | ERSATZTEIL ELEKTRODE         | 22 | 60618        | PUFFER PH 7,0 50 M/L (GRÜN)    |
| 17 | * 70312      | ERSATZTEIL ELEKTRODE         | 23 | 60633        | KALIBERIERLÖSUNG 47 0MV        |
| 17 | * 70314      | ERSATZTEIL ELEKTRODE         | 24 | 70054        | PERISTALTIKPUMPE P1,5-1,5 230V |

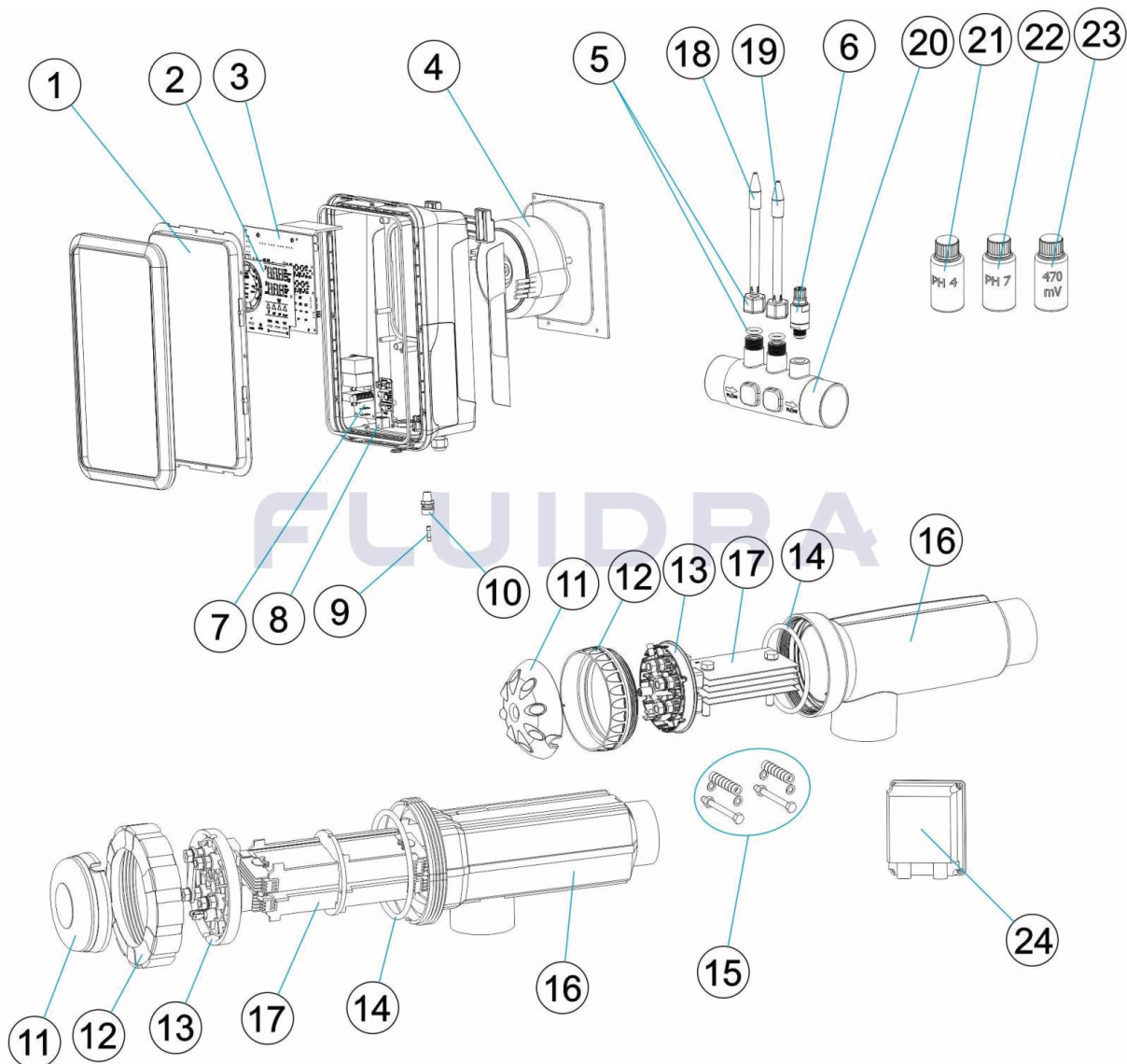
CODE **71692, 71693, 71694, 71695, 71696**

BESCHREIBUNG: **SMART NEXT**

## HINWEISE

| POS | CODE       | HINWEISE                 |
|-----|------------|--------------------------|
| 3   | 4408040287 | FÜR: 71692               |
| 3   | 4408040288 | FÜR: 71693               |
| 3   | 4408040289 | FÜR: 71694               |
| 3   | 4408040290 | FÜR: 71695               |
| 3   | 4408040291 | FÜR: 71696               |
| 4   | 4408040265 | FÜR: 71692               |
| 4   | 4408040266 | FÜR: 71693               |
| 4   | 4408040267 | FÜR: 71694               |
| 4   | 4408040268 | FÜR: 71695               |
| 4   | 4408040269 | FÜR: 71696               |
| 9   | 4408041112 | FÜR: 71692               |
| 9   | 4408041113 | FÜR: 71693, 71694        |
| 9   | 4408041114 | FÜR: 71695               |
| 9   | 4408041204 | FÜR: 71696               |
| 11  | 4408041117 | FÜR: 71692, 71693        |
| 11  | 4408040509 | FÜR: 71694, 71695, 71696 |
| 12  | 4408041123 | FÜR: 71692, 71693        |
| 12  | 4408040508 | FÜR: 71694, 71695, 71696 |
| 13  | 4408040074 | FÜR: 71692, 71693        |
| 13  | 4408040272 | FÜR: 71694, 71695, 71696 |
| 14  | 4408041118 | FÜR: 71692, 71693        |
| 14  | 4408040510 | FÜR: 71694, 71695, 71696 |
| 15  | 4408040073 | FÜR: 71692, 71693        |
| 16  | 4408041122 | FÜR: 71692, 71693        |
| 16  | 57655      | FÜR: 71694, 71695, 71696 |
| 17  | 60595      | FÜR: 71692               |
| 17  | 60596      | FÜR: 71693               |
| 17  | 70312      | FÜR: 71694               |
| 17  | 70314      | FÜR: 71695               |
| 17  | 70315      | FÜR: 71696               |

CODIGO **71692, 71693, 71694, 71695, 71696**

 DESCRIÇÃO: **SMART NEXT**

**PORTUGUES**

| POS | CODIGO       | DESCRIÇÃO                     | QUANTIDADE | POS | CODIGO       | DESCRIÇÃO                         | QUANTIDADE |
|-----|--------------|-------------------------------|------------|-----|--------------|-----------------------------------|------------|
| 1   | 4408060156   | COBERTA SMART NEXT            |            | 7   | 4408040327   | PBA FILTRO CONTROL PH             |            |
| 2   | 4408060157   | TECLADO SMART NEXT            |            | 8   | 4408040365   | PBA CONTROL ORP                   |            |
| 3   | * 4408040287 | TARJETA POTÊNCIA SMN-7        |            | 9   | * 4408041112 | FUSÍVEL 1A                        |            |
| 3   | * 4408040288 | TARJETA POTÊNCIA SMN-12       |            | 9   | * 4408041113 | FUSÍVEL 2A                        |            |
| 3   | * 4408040289 | TARJETA POTÊNCIA SMN-21       |            | 9   | * 4408041114 | FUSÍVEL 3A                        |            |
| 3   | * 4408040290 | TARJETA POTÊNCIA SMN-30       |            | 9   | * 4408041204 | FUSÍVEL 4A                        |            |
| 3   | * 4408040291 | TARJETA POTÊNCIA SMN-40       |            | 10  | 4408040523   | PORTAFUSÍVEIS 5X20 CHASIS         |            |
| 4   | * 4408040265 | TRANSFORMADOR POTÊNCIA 110VA  |            | 11  | * 4408041117 | TAMPA PROTECÇÃO CONTACTOS         |            |
| 4   | * 4408040266 | TRANSFORMADOR POTÊNCIA 190VA  |            | 11  | * 4408040509 | PROTECTOR CONTACTOS               |            |
| 4   | * 4408040267 | TRANSFORMADOR POTÊNCIA 230VA  |            | 12  | * 4408041123 | ANEL ROSQUEADO CÉLULA             |            |
| 4   | * 4408040268 | TRANSFORMADOR POTÊNCIA 340VA  |            | 12  | * 4408040508 | TAMPA ROSCADA DE FECHO DA VASO    |            |
| 4   | * 4408040269 | TRANSFORMADOR POTÊNCIA 440VA  |            | 13  | * 4408040074 | ELETRODOS DE REPOSIÇÃO APOIO ABEF |            |
| 5   | 4408040604   | PORTAELECTRODOS PE 12M/M-1/2" |            | 13  | * 4408040272 | ELETRODOS DE REPOSIÇÃO APOIO BIP  |            |

\* VEJA A FICHA DE OBSERVAÇÕES

CODIGO **71692, 71693, 71694, 71695, 71696**

DESCRIÇÃO: **SMART NEXT**

|    |              |                               |    |              |                                      |
|----|--------------|-------------------------------|----|--------------|--------------------------------------|
| 6  | 4408040068   | VALVOLA INJEÇÃO PH-MINUS 3/8" | 14 | * 4408041118 | JUNTA TÓRICA CÉLULA                  |
| 14 | * 4408040510 | JUNTA EPDM COPO               | 17 | * 70315      | SOBRESSALENTE ELÉCTRODO              |
| 15 | * 4408040073 | KIT ÂNCORA ELETRODOS KIT      | 18 | 60648        | ELECTRODO COMBINADO PH               |
| 16 | * 4408041122 | CORPO CÉLULA                  | 19 | 60649        | ELECTRODO ORP                        |
| 16 | * 57655      | VASO PORTA-ELECTRODOS         | 20 | 70968        | PORTA-SONDAS                         |
| 17 | * 60595      | SOBRESSALENTE ELÉCTRODO       | 21 | 60632        | SOLUÇÃO TAMPÃO PH 4,0 50 ML. (VERME  |
| 17 | * 60596      | SOBRESSALENTE ELÉCTRODO       | 22 | 60618        | SOLUÇÃO TAMPÃO PH 7,0 50 M/L. (VERDE |
| 17 | * 70312      | SOBRESSALENTE ELÉCTRODO       | 23 | 60633        | SOLUÇÃO TAMPÃO 470 MV                |
| 17 | * 70314      | SOBRESSALENTE ELÉCTRODO       | 24 | 70054        | BOMBA PERISTÁLTICA 1,5-1,5 230V      |

CODIGO **71692, 71693, 71694, 71695, 71696**

DESCRIÇÃO: **SMART NEXT**

## OBSERVACÕES

| POS | CODIGO     | OBSERVACÕES               |
|-----|------------|---------------------------|
| 3   | 4408040287 | PARA: 71692               |
| 3   | 4408040288 | PARA: 71693               |
| 3   | 4408040289 | PARA: 71694               |
| 3   | 4408040290 | PARA: 71695               |
| 3   | 4408040291 | PARA: 71696               |
| 4   | 4408040265 | PARA: 71692               |
| 4   | 4408040266 | PARA: 71693               |
| 4   | 4408040267 | PARA: 71694               |
| 4   | 4408040268 | PARA: 71695               |
| 4   | 4408040269 | PARA: 71696               |
| 9   | 4408041112 | PARA: 71692               |
| 9   | 4408041113 | PARA: 71693, 71694        |
| 9   | 4408041114 | PARA: 71695               |
| 9   | 4408041204 | PARA: 71696               |
| 11  | 4408041117 | PARA: 71692, 71693        |
| 11  | 4408040509 | PARA: 71694, 71695, 71696 |
| 12  | 4408041123 | PARA: 71692, 71693        |
| 12  | 4408040508 | PARA: 71694, 71695, 71696 |
| 13  | 4408040074 | PARA: 71692, 71693        |
| 13  | 4408040272 | PARA: 71694, 71695, 71696 |
| 14  | 4408041118 | PARA: 71692, 71693        |
| 14  | 4408040510 | PARA: 71694, 71695, 71696 |
| 15  | 4408040073 | PARA: 71692, 71693        |
| 16  | 4408041122 | PARA: 71692, 71693        |
| 16  | 57655      | PARA: 71694, 71695, 71696 |
| 17  | 60595      | PARA: 71692               |
| 17  | 60596      | PARA: 71693               |
| 17  | 70312      | PARA: 71694               |
| 17  | 70314      | PARA: 71695               |
| 17  | 70315      | PARA: 71696               |