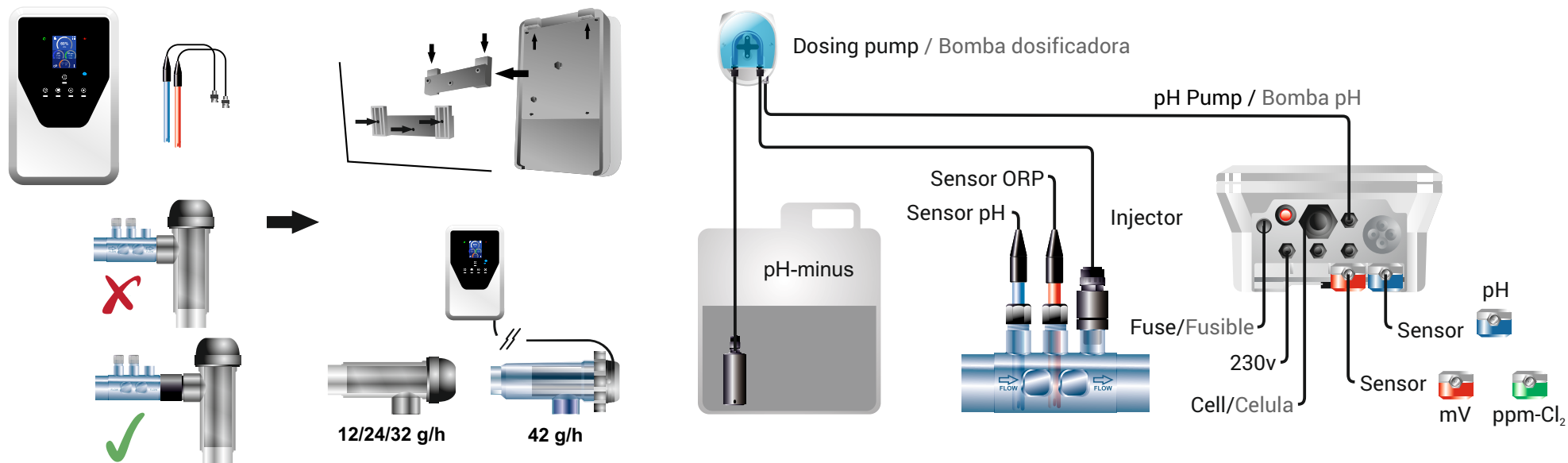
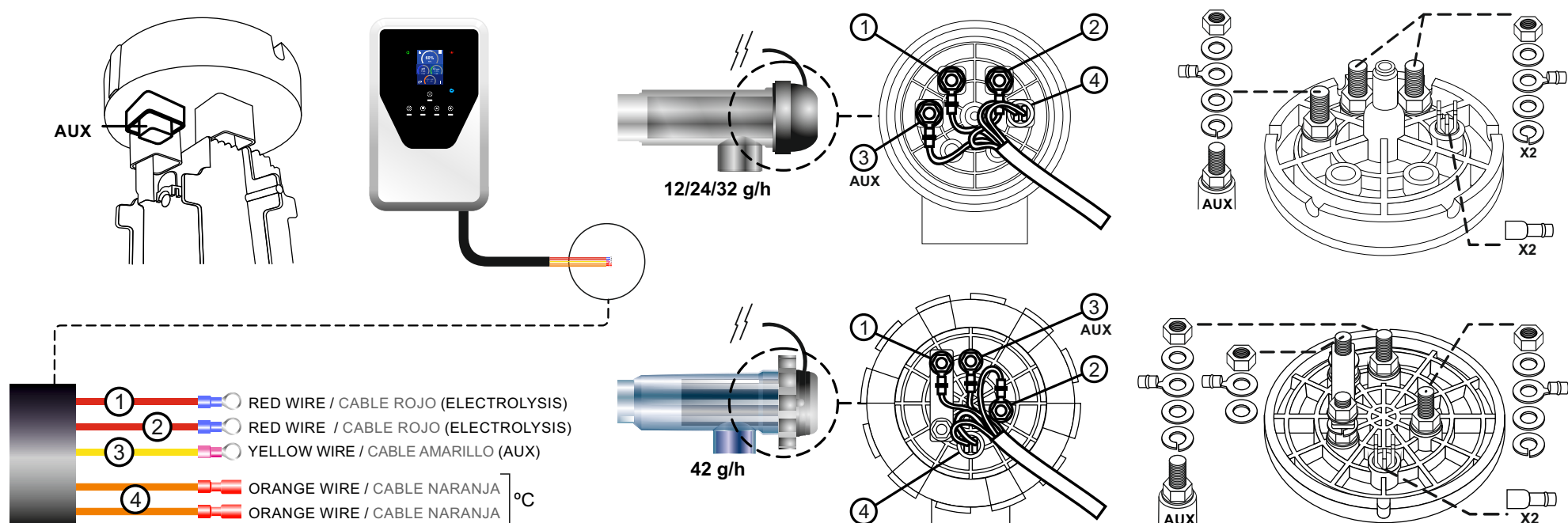


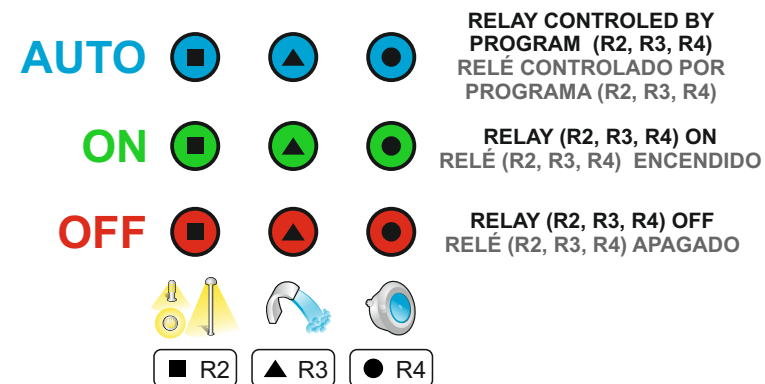
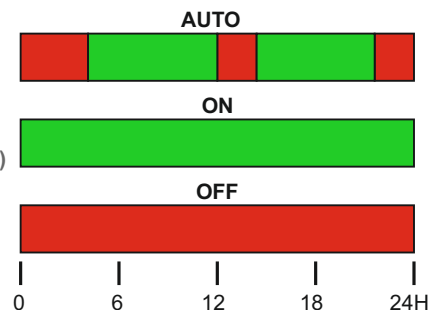
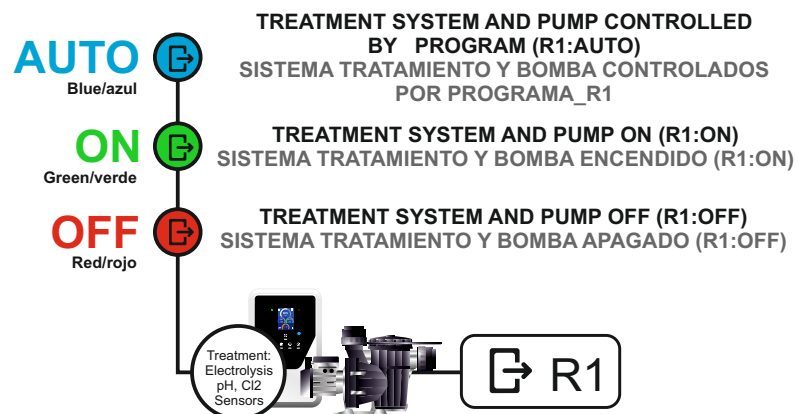
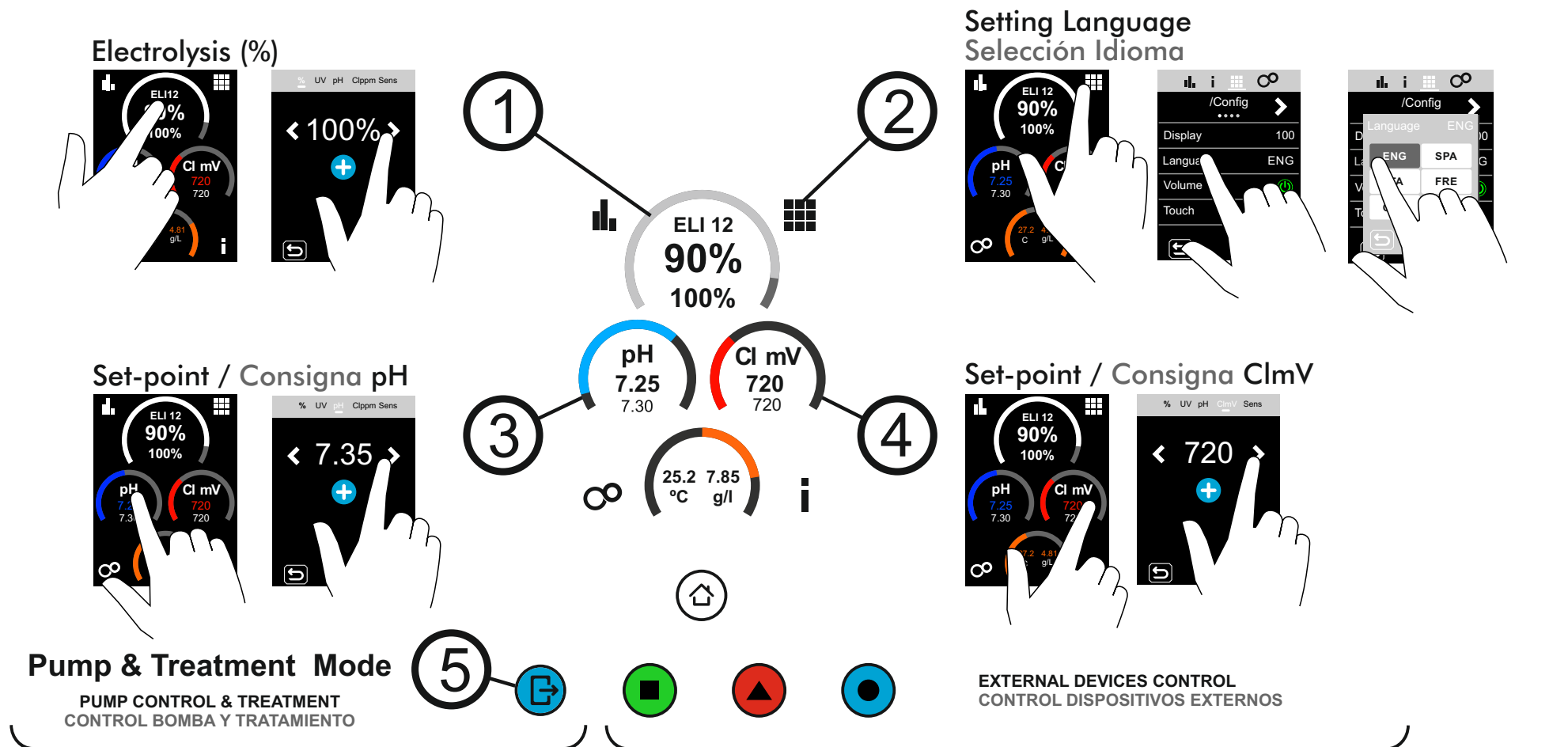
1) Unpacking / Desembalaje



2) Electrical connections of the electrolysis cell / Conexiones eléctricas de la celda de electrólisis



3) Set up / Configuración ELI : 1 → 5



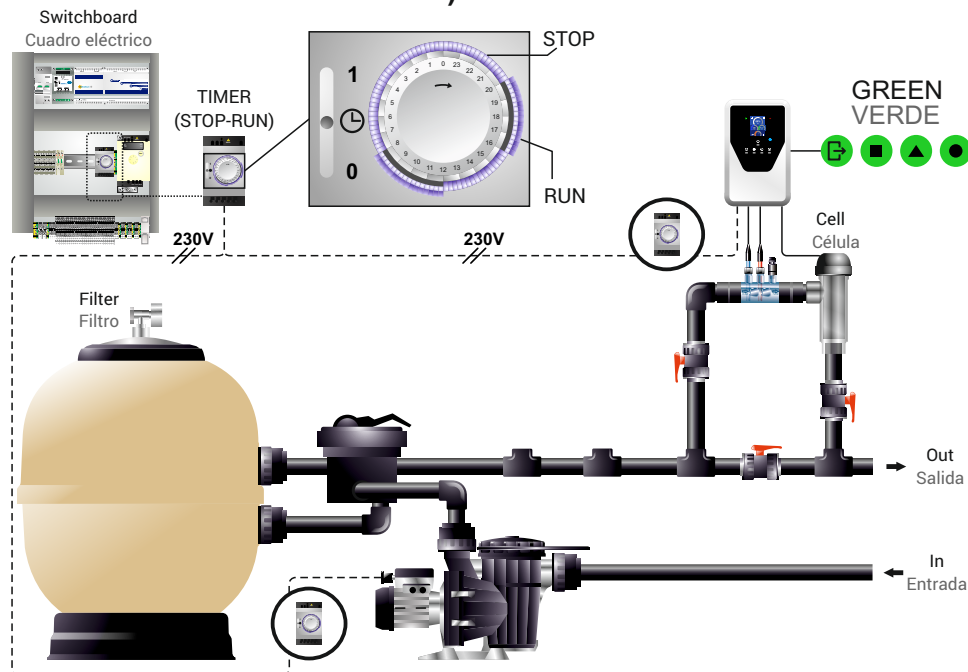
4) External Timer

PUMP AND ELITE CONNECT SYSTEM ARE SWITCHED BY EXTERNAL TIMER (STOP-RUN)

Temporizador Externo

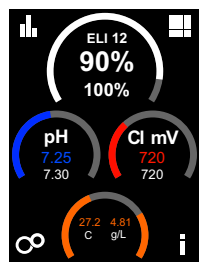
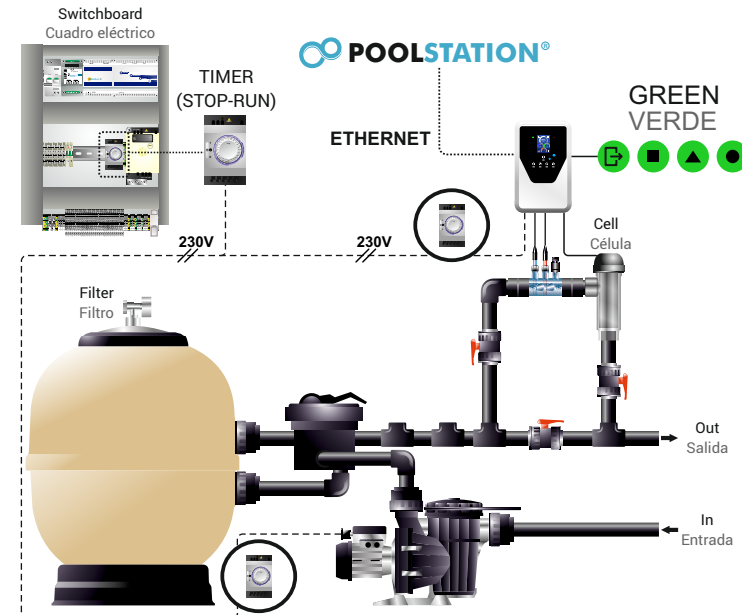
MANIOBRA DE BOMBA Y STMA ELITE CONNECT CONTROLADO POR TEMPORIZADOR EXTERNO (STOP-RUN)

4a) No Internet

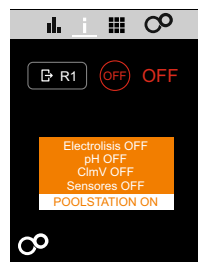


4b) Internet

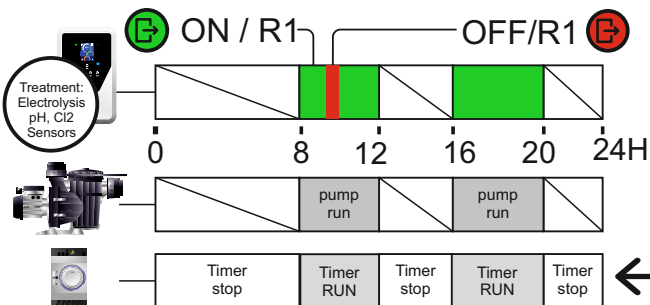
Internet communication only available when TIMER:RUN
Conexión Internet solo disponible cuando TIMER:RUN



Pump RUN (TIMER:RUN)
Treatment ON
Poolstation ON



Pump RUN (TIMER:RUN)
Treatment OFF
Poolstation ON



RECOMMENDED
RECOMENDADO

AUTO
Blue/azul



TIMER:AUTO + R1:AUTO
NOT RECOMMENDED / NO RECOMENDADO

ON
Green/verde



TIMER:AUTO + R1:ON
IF "TIMER:AUTO(RUN)": Treat. Enabled + (Poolstation Enabled & PUMP RUN).
Si "TIMER:AUTO(RUN)": Trat. Activo + (Poolstation Activo & BOMBA MARCHA)

OFF
Red/rojo



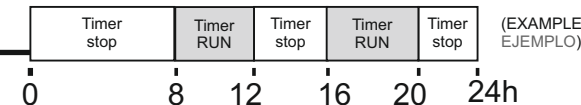
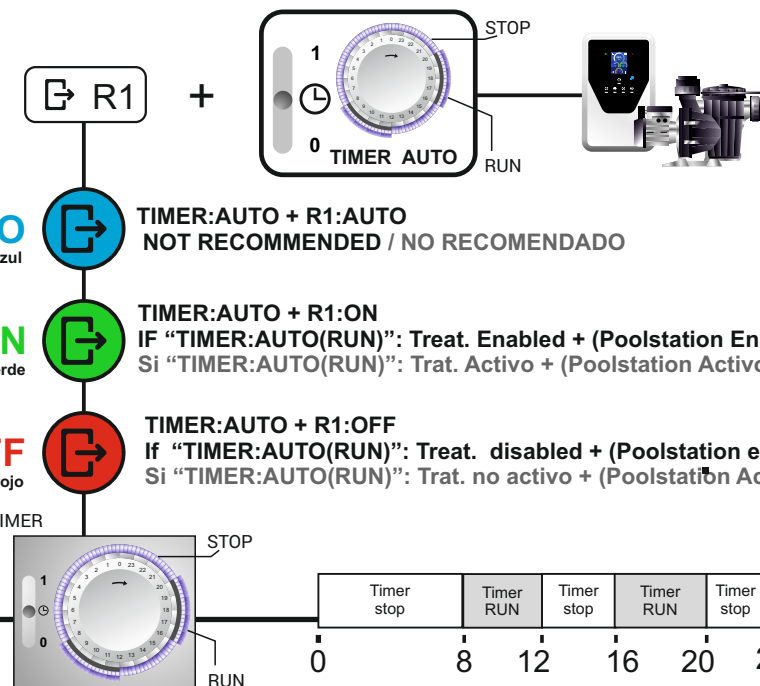
TIMER:AUTO + R1:OFF
If "TIMER:AUTO(RUN)": Treat. disabled + (Poolstation enabled & PUMP RUN)
Si "TIMER:AUTO(RUN)": Trat. no activo + (Poolstation Activo & BOMBA MARCHA)

MAINTENANCE
MANTENIMIENTO

EXTERNAL TIMER AUTO (stop-run)

RUN= 8-12hr + 16-20hr

3

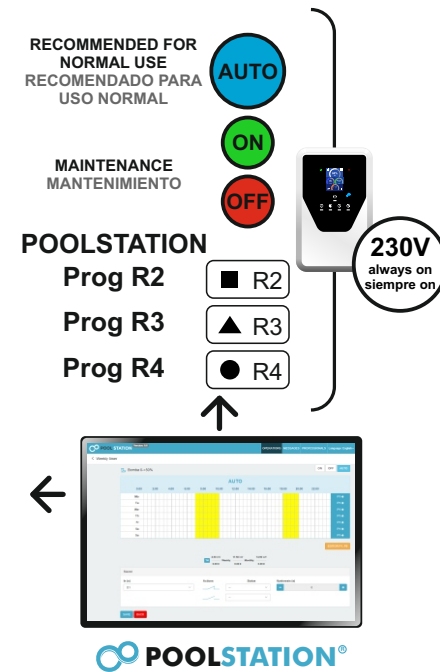
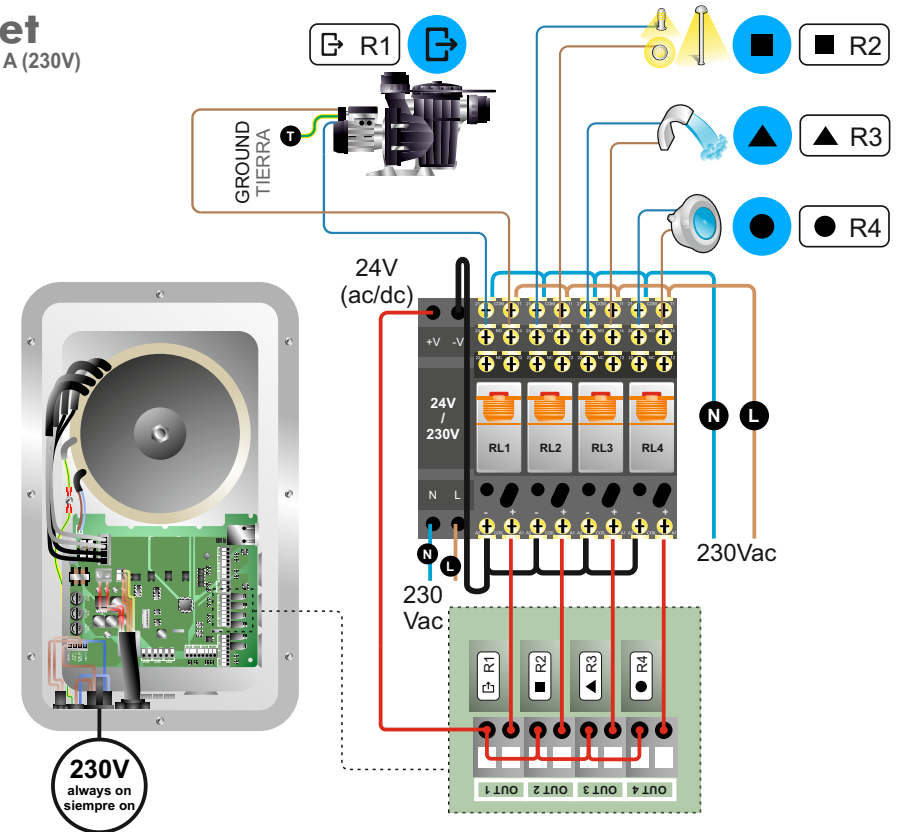
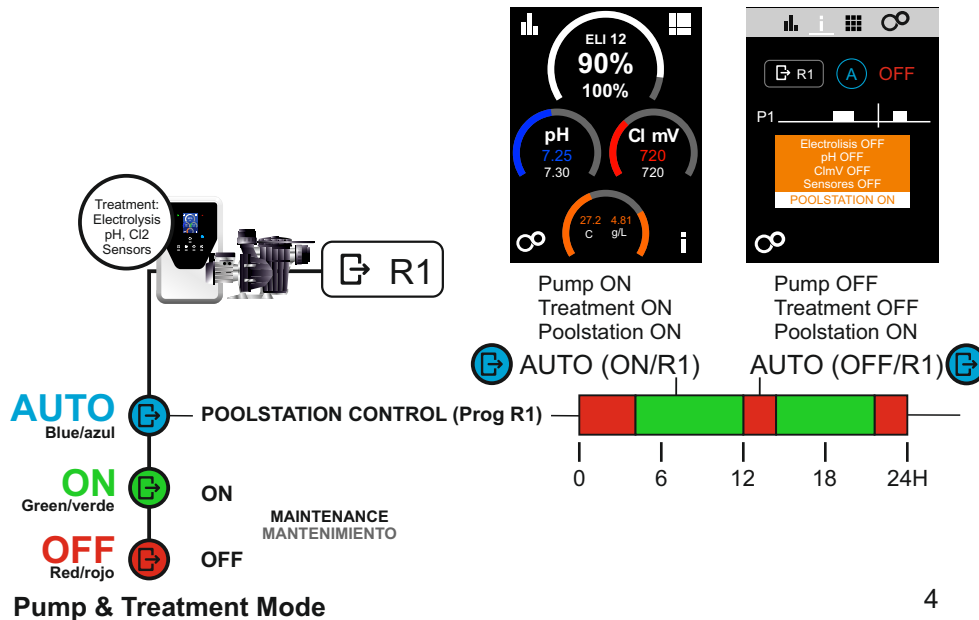
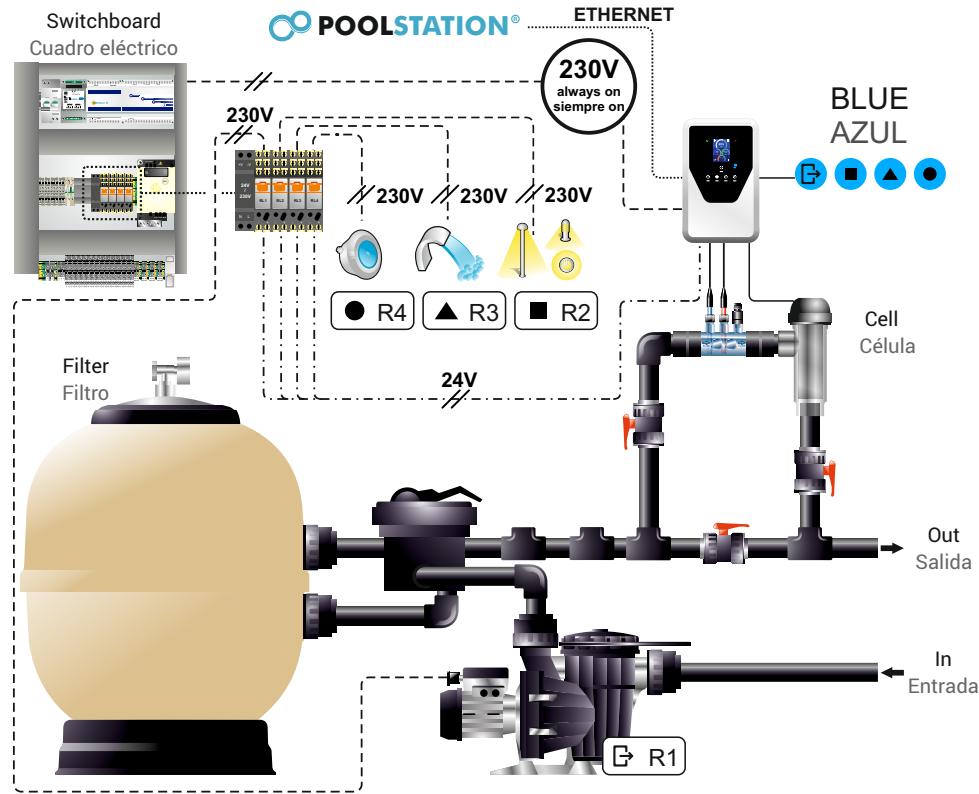


5) With Internet connection

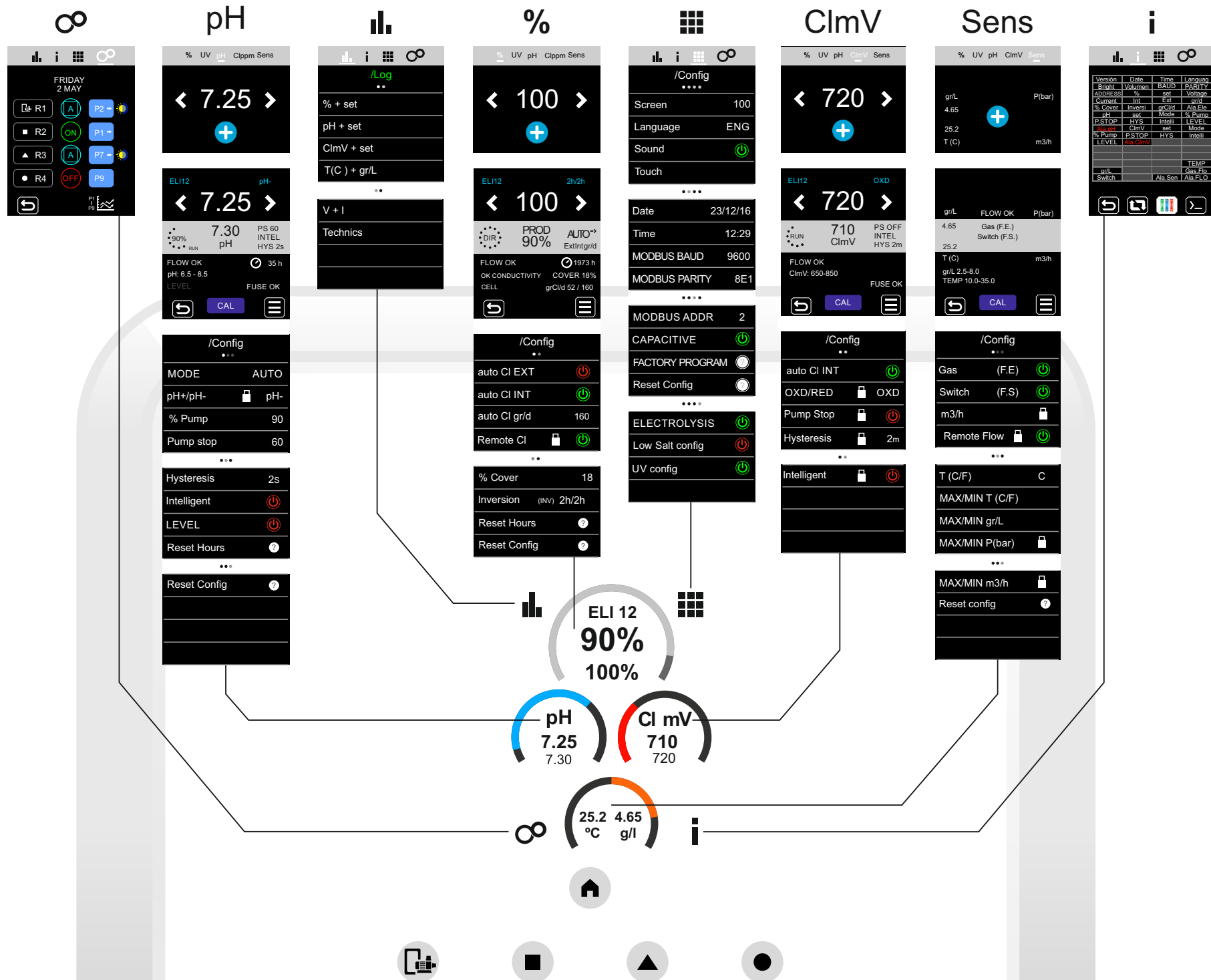
ELITE CONNECT SYSTEM ALWAYS POWERED ON (230V)
PUMP CONTROLLED WITH R1-POLSTATION

Con conexión a Internet

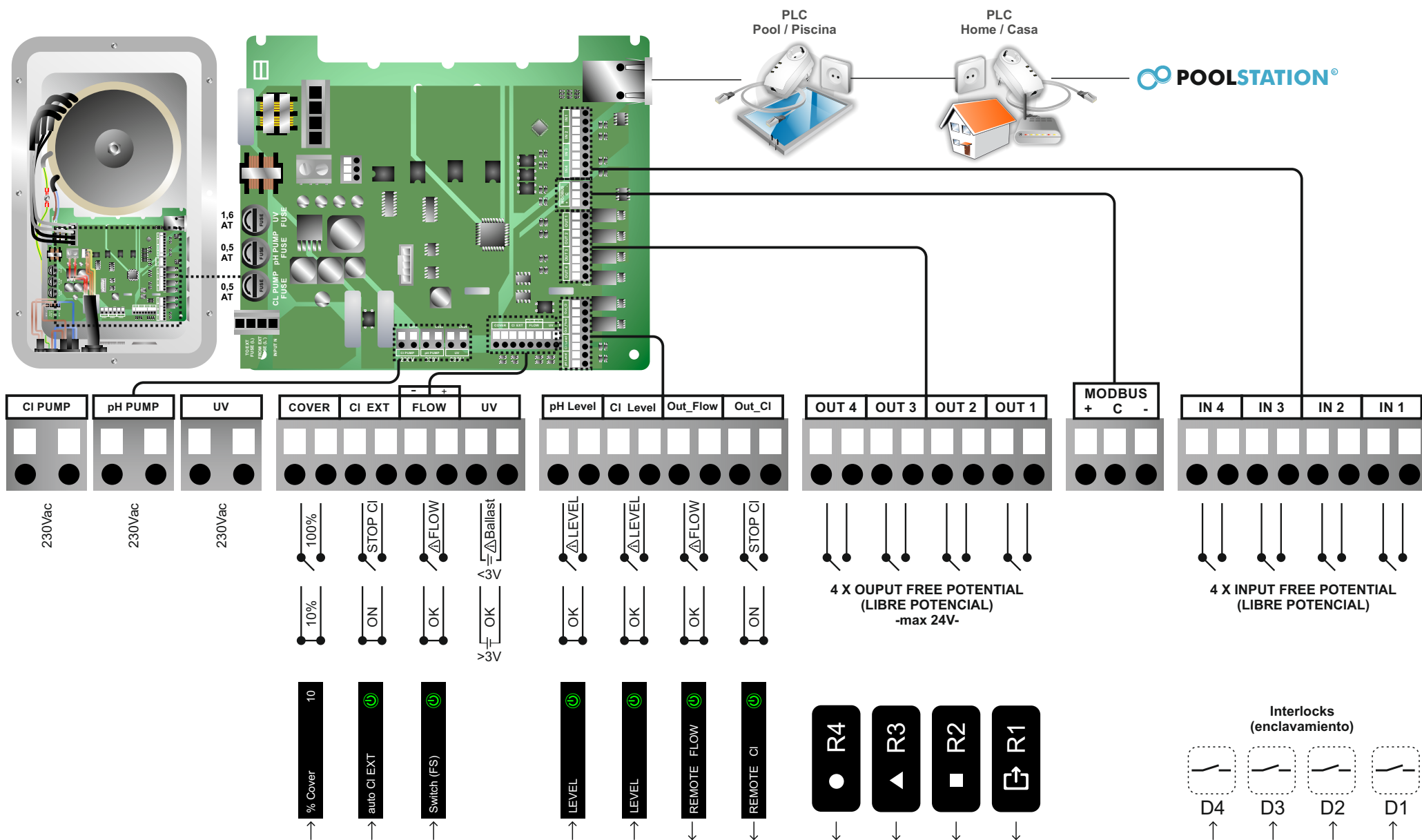
SISTEMA ELITE CONNECT SIEMPRE ENCENDIDO A (230V)
BOMBA CONTROLADA CON R1-POLSTATION



6) Navigation Map / Mapa de navegación



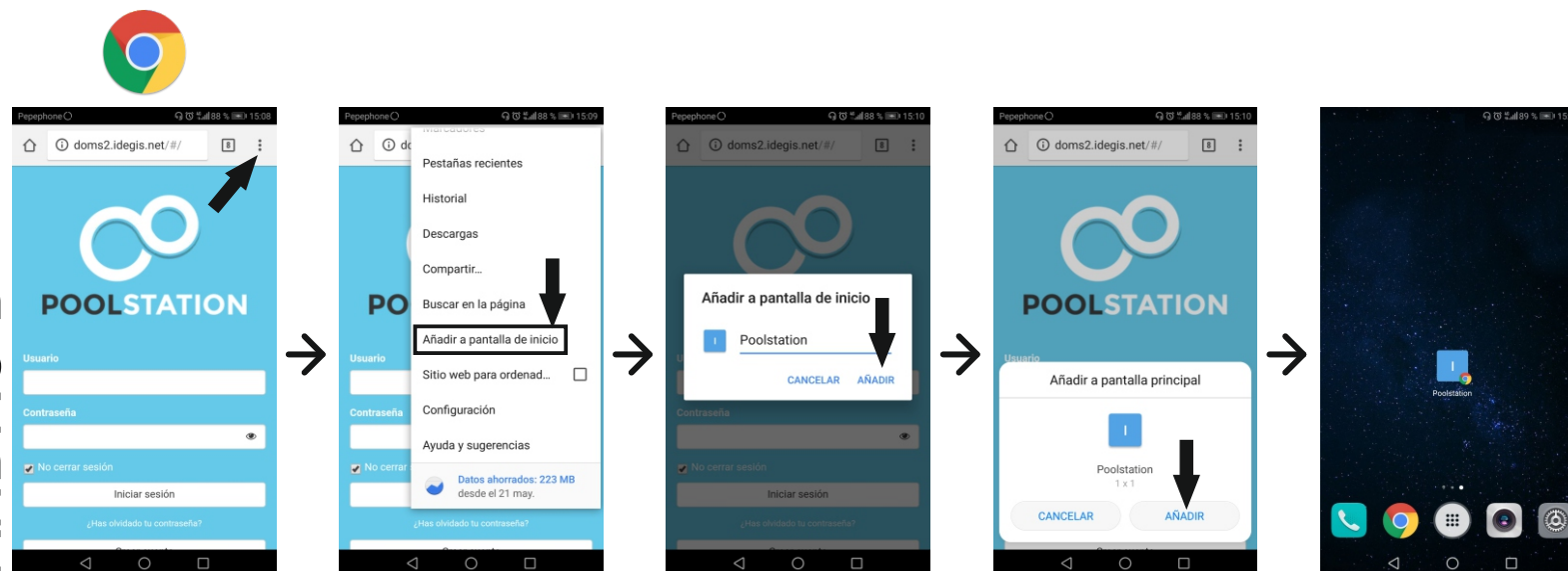
7) Connection Map / Mapa de conexiones



8) Direct access / Acceso directo

<https://doms2.idegis.net>

ANDROID



IOS

