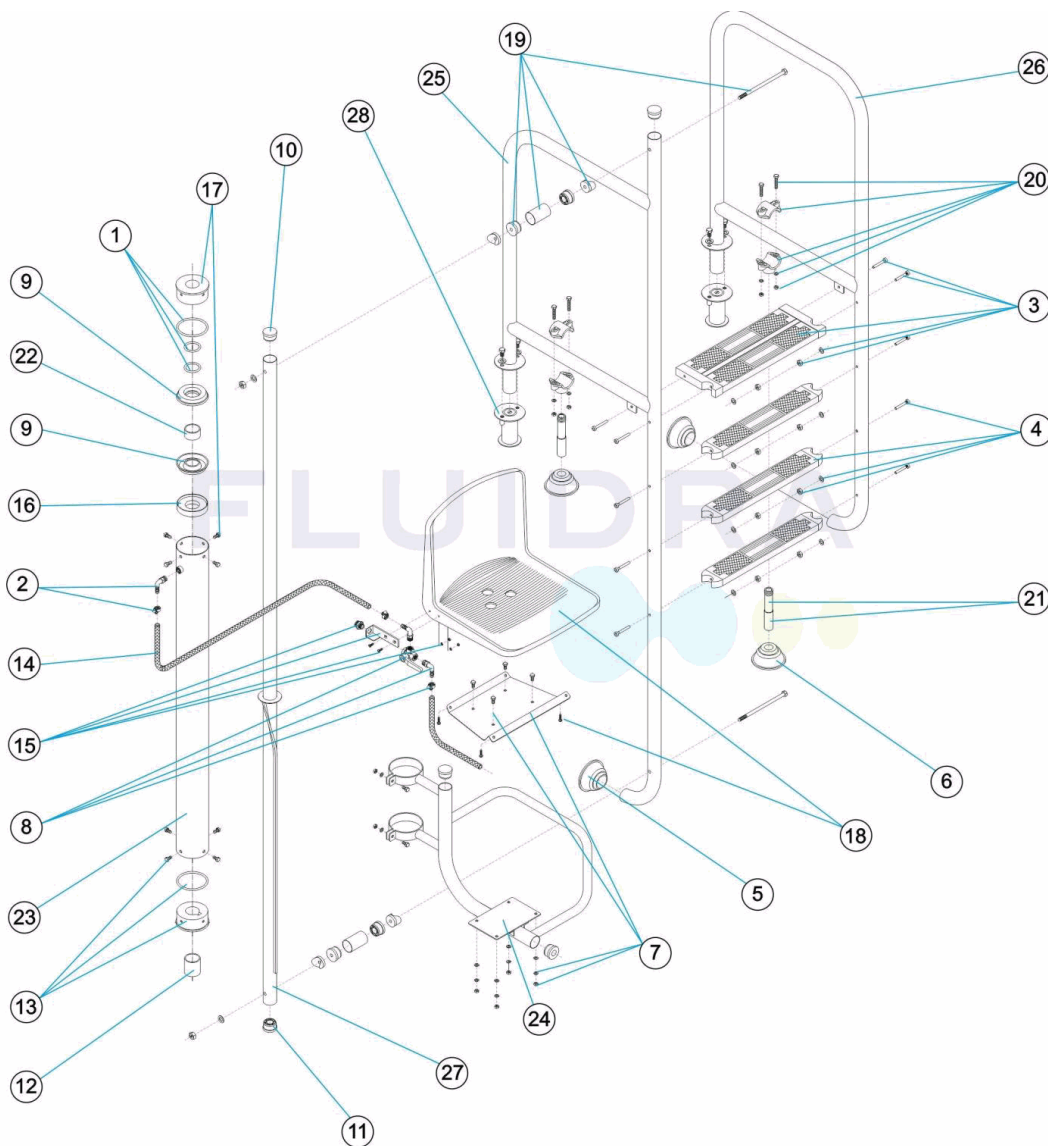


CODIGO **11277, 15219, 28619, 28620, 28621, 28622**

 DESCRIPCION: **ELEVADOR HIDRÁULICO**

**ESPAÑOL**

POS	CODIGO	DESCRIPCION	POS	CODIGO	DESCRIPCION
1	4401011501	JUNTAS ELEVADOR	15	4401011515	SOPORTE VALVULA
2	4401011502	CODO Y BRIDA	16	4401011516	APOYO JUNTA
3	4401010805	PELDAÑO SEGURIDAD 316	17	4401011517	TAPA GUIA SUPERIOR
4	4401010104	PELDAÑO LUXE 316	18	4401011518	ASIENTO
5	4401010501	TOPE ARTICULADO	19	4401011519	CJTO. ENLACE UNION
6	4401011506	TOPE ARTICULADO D.28	20	4401011520	BRIDA APOYO
7	4401011507	PLACA ASIENTO	21	4401011521	TUBO APOYO
8	4401011508	VALVULA 3 VIAS COMPLETA	22	4401011505	CASQUILLO TOPE INFERIOR
9	4401011509	JUNTA ELEVADOR	23	11277R0600	CILINDRO ELEVADOR HIDRAULICO
10	4401070208	TAPON D.43	24	11277R0400	SOPORTE ASIENTO
11	4401050402	CASQUILLOS GUIA	25	* 11277R0800	PASAMANO LARGO L=1000
12	4401011512	CASQUILLO DE SEGURIDAD	25	* 15219R0100	PASAMANO LARGO L=650
13	4401011513	CASQUILLO GUIA	26	* 11277R0900	PASAMANO CORTO L=1000

\* -&gt; VER HOJA DE OBSERVACIONES

CODIGO **11277, 15219, 28619, 28620, 28621, 28622**

DESCRIPCION: **ELEVADOR HIDRÁULICO**

14	4401011514	TUBO ENTRADA 0,9 M	26	* 15219R0200	PASAMANO CORTO L=650
27	11277R0100	CONJUNTO TUBO GUIA	28	00143	ANCLAJE

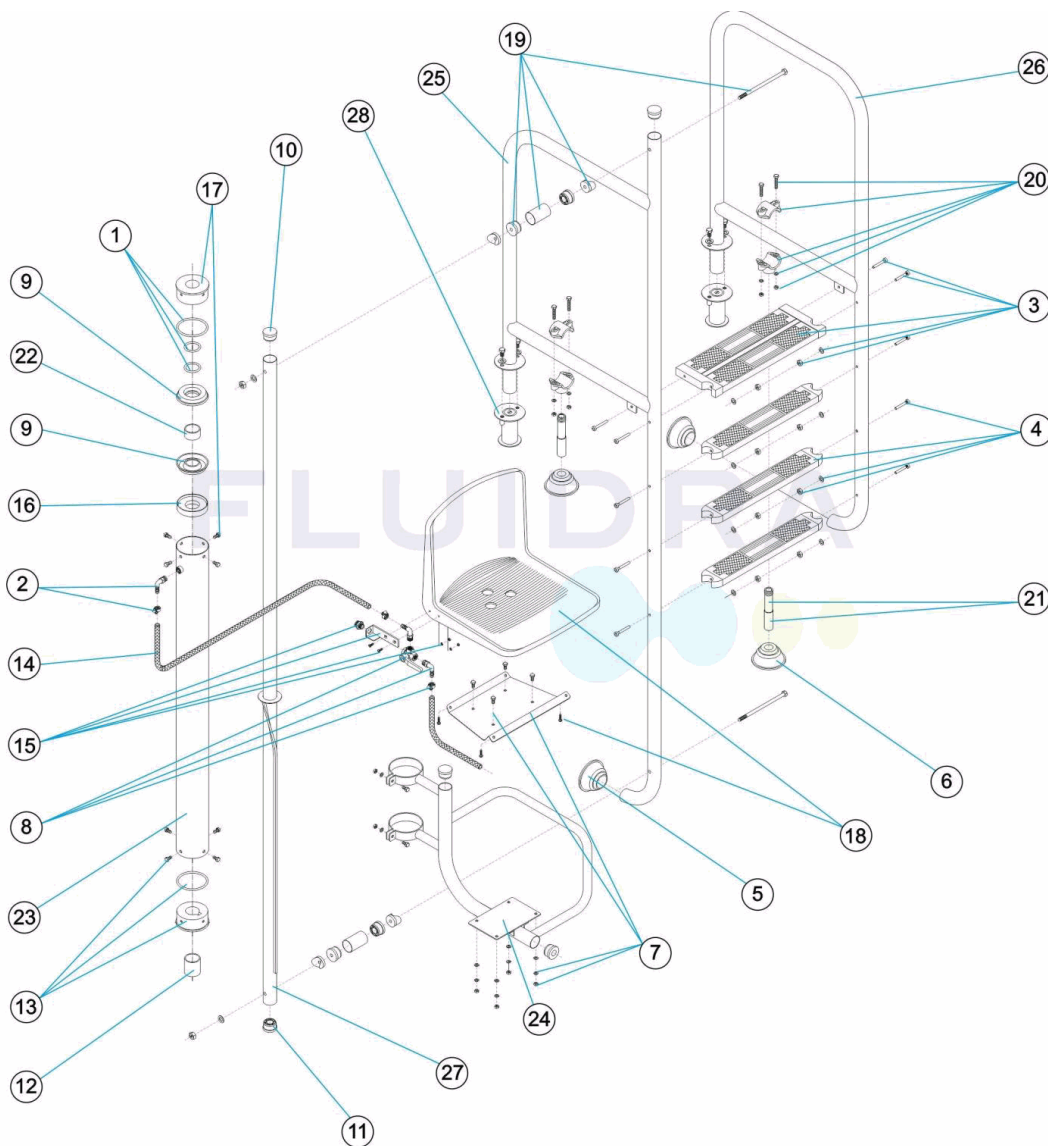
CODIGO **11277, 15219, 28619, 28620, 28621, 28622**

DESCRIPCION: **ELEVADOR HIDRÁULICO**

**OBSERVACIONES**

POS	CODIGO	OBSERVACIONES
25	11277R0800	PARA: 11277, 28620
25	15219R0100	PARA: 15219, 28619
26	11277R0900	PARA: 11277, 28620
26	15219R0200	PARA: 15219, 28619

CODE **11277, 15219, 28619, 28620, 28621, 28622**

 DESCRIPTION: **ÉLÉVATEUR HYDRAULIQUE**

**FRANCAIS**

POS	CODE	DESCRIPTION	POS	CODE	DESCRIPTION
1	4401011501	JOINT ELEVATEUR	15	4401011515	SUPPORT VANNE
2	4401011502	COUDE ET BRIDE	16	4401011516	SUPPORT DE JOINT
3	4401010805	MARCHE DE SECURITE AISI 316	17	4401011517	COUVERCLE GUIDE SUPÉRIEUR
4	4401010104	MARCHE LUXE AISI 316	18	4401011518	SEAT
5	4401010501	TAMPON ARTICULÉ	19	4401011519	ENSEMBLE RACCORD UNION
6	4401011506	TAMPON ARTICULÉ D 28	20	4401011520	BRIDE DE SUPPORT
7	4401011507	PLAQUE SUPPORT DE SIEGE	21	4401011521	TUBE DE SUPPORT
8	4401011508	VANNE 3 VOIES COMPLETE	22	4401011505	DOUILLES
9	4401011509	JOINT ELEVATEUR	23	11277R0600	CYLINDRE ÉLÉVATEUR
10	4401070208	BOUCHON D.43	24	11277R0400	PROTECTION SIÈGE
11	4401050402	DOUILLES	25	* 11277R0800	MAIN COURAGE LARGE L=1000
12	4401011512	DOUILLE DE SÉCURITÉ	25	* 15219R0100	MAIN COURAGE LARGE L=650
13	4401011513	DOUILLE GUIDE	26	* 11277R0900	MAIN COURANTE COURTE L=1000

\* -&gt; VOIR FICHE D'OBSERVATIONS

CODE **11277, 15219, 28619, 28620, 28621, 28622**

DESCRIPTION: **ÉLEVATEUR HYDRAULIQUE**

14	4401011514	TUBE ENTRÉE 0,9 M.	26	* 15219R0200	MAIN COURANTE COURTE L=650
27	11277R0100	ENSEMBLE TUBE GUIDE	28	00143	ANCORAGE

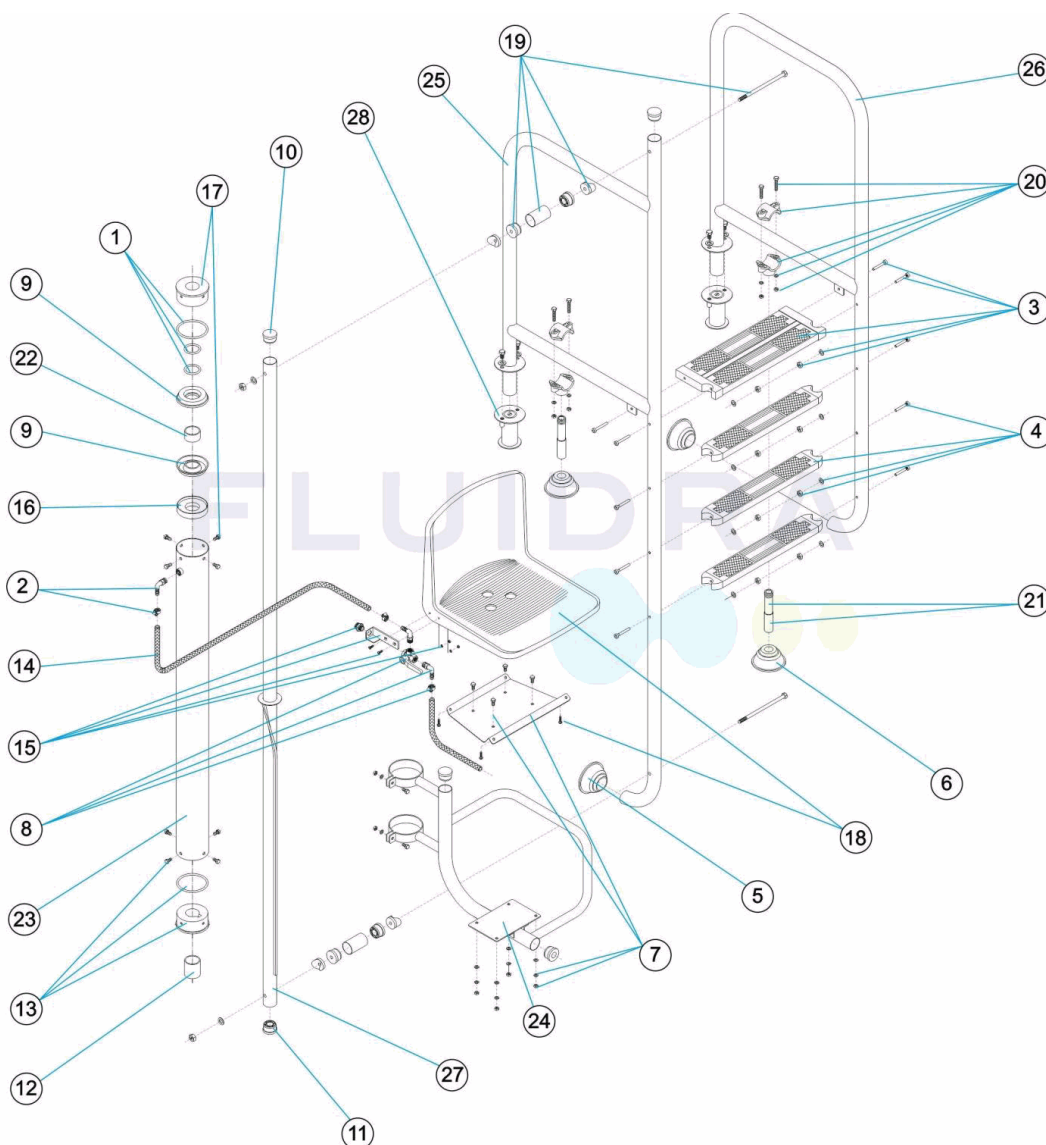
CODE **11277, 15219, 28619, 28620, 28621, 28622**

DESCRIPTION: **ÉLÉVATEUR HYDRAULIQUE**

## OBSERVATIONS

POS	CODE	OBSERVATIONS
25	11277R0800	POUR: 11277, 28620
25	15219R0100	POUR: 15219, 28619
26	11277R0900	POUR: 11277, 28620
26	15219R0200	POUR: 15219, 28619

CODE **11277, 15219, 28619, 28620, 28621, 28622**

 DESCRIPTION: **HYDRAULIC LIFT**


## ENGLISH

POS	CODE	DESCRIPTION	POS	CODE	DESCRIPTION
1	4401011501	LIFTER GASKETS	15	4401011515	VALVE SUPPORT
2	4401011502	ELBOW AND FLANGE	16	4401011516	SEAL SUPPORT
3	4401010805	SAFETY TREAD 316	17	4401011517	SUPERIOR GUIDE COVER
4	4401010104	DELUXE TREAD 316	18	4401011518	SIÈGE
5	4401010501	ARTICULATED FOOT PAD	19	4401011519	UNION KIT
6	4401011506	ARTICULATED FOOT PAD D 28	20	4401011520	SUPPORT DASP
7	4401011507	CHAIR PLATE	21	4401011521	SUPPORT PIPE
8	4401011508	COMPLETE 3-WAY VALVE	22	4401011505	SOCKETS
9	4401011509	LIFTER GASKET	23	11277R0600	HYDRAULIC CYLINDER TUBE
10	4401070208	PLUG D.43	24	11277R0400	SEAT SUPPORT
11	4401050402	BUSHES	25	* 11277R0800	LARGE HANDRAIL L=1000
12	4401011512	SECURITY SOCKET	25	* 15219R0100	LARGE HANDRAIL L=650
13	4401011513	GUIDE SOCKET	26	* 11277R0900	SMALL HANDRAIL L=1000

\* -> SEE OBSERVATIONS SHEET

CODE                      **11277, 15219, 28619, 28620, 28621, 28622**

DESCRIPTION: **HYDRAULIC LIFT**

14	4401011514	PIPE 0,9 M.	26	* 15219R0200	SMALL HANDRAIL L=650
27	11277R0100	MECHANICAL TUBE	28	00143	ANCHOR



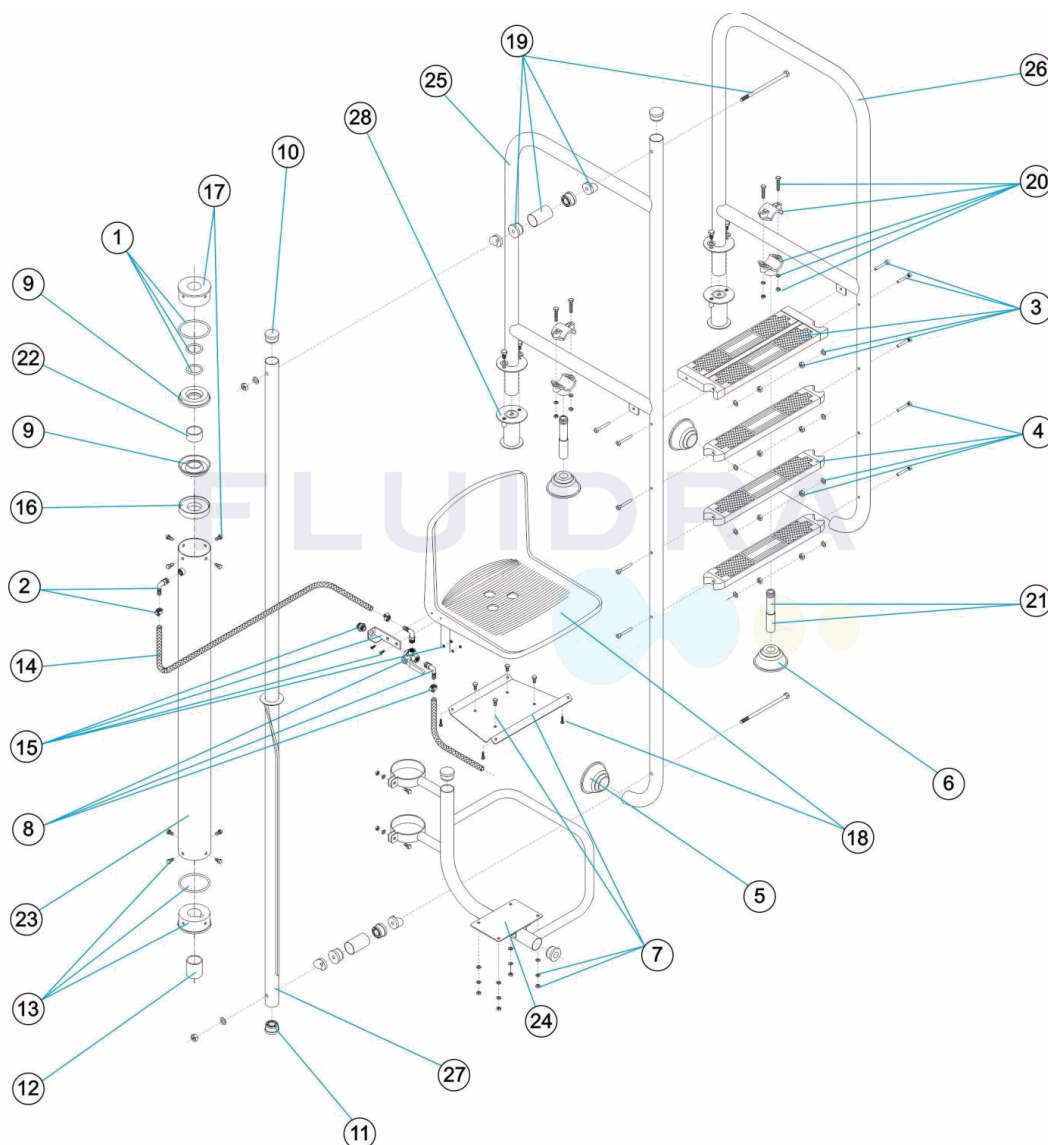
CODE **11277, 15219, 28619, 28620, 28621, 28622**

DESCRIPTION: **HYDRAULIC LIFT**

## OBSERVATIONS

POS	CODE	OBSERVATIONS
25	11277R0800	FOR: 11277, 28620
25	15219R0100	FOR: 15219, 28619
26	11277R0900	FOR: 11277, 28620
26	15219R0200	FOR: 15219, 28619

CODICE **11277, 15219, 28619, 28620, 28621, 28622**

 DESCRIZIONE: **ELEVATORE IDRAULICO**

**ITALIANO**

POS	CODICE	DESCRIZIONE	POS	CODICE	DESCRIZIONE
1	4401011501	GUARNIZIONI SOLLEVATORE	15	4401011515	SUPPORTO VALVOLA
2	4401011502	GOMITO E FLANGIA	16	4401011516	SUPPORTO GUARNIZIONE
3	4401010805	GRADINO DI SICUREZZA AISI 316	17	4401011517	TAPPO GUIDA SUPERIORE
4	4401010104	GRADINO LUXE AISI 316	18	4401011518	SEIDA
5	4401010501	PIEDINO SNODABILE	19	4401011519	KIT ATTACO SEIDA
6	4401011506	PIEDINO SNODABILE D 28	20	4401011520	PRESA A STAFFA SOSTEGNO
7	4401011507	PIASTRA SEGGIOLA	21	4401011521	TUBO SOSTENGO
8	4401011508	VALVOLA A 3 VIE COMPLETA	22	4401011505	PASSANTI
9	4401011509	GUARNIZIONE SOLLEVATORE	23	11277R0600	CILINDRO ELEVATORE
10	4401070208	TAPPO D.43	24	11277R0400	SOSTEGNO SEDILE
11	4401050402	PASSANTI	25	* 11277R0800	CORRIMANO LUNGO L=1000
12	4401011512	TAPPO DI SICUREZZA	25	* 15219R0100	CORRIMANO LUNGO L=650
13	4401011513	TAPPO CON GUIDA	26	* 11277R0900	CORRIMANO CORTO L=1000

\* -&gt; SI FACCIA RIFERIMENTO AL FOGLIO DELLE OSSERVAZIONI

CODICE **11277, 15219, 28619, 28620, 28621, 28622**

DESCRIZIONE: **ELEVATORE IDRAULICO**

14	4401011514	TUBO ENTRATA 0,9 M.	26	* 15219R0200	CORRIMANO CORTO L=650
27	11277R0100	KIT CILINDRO GUIDA	28	00143	ANCORAGGIO

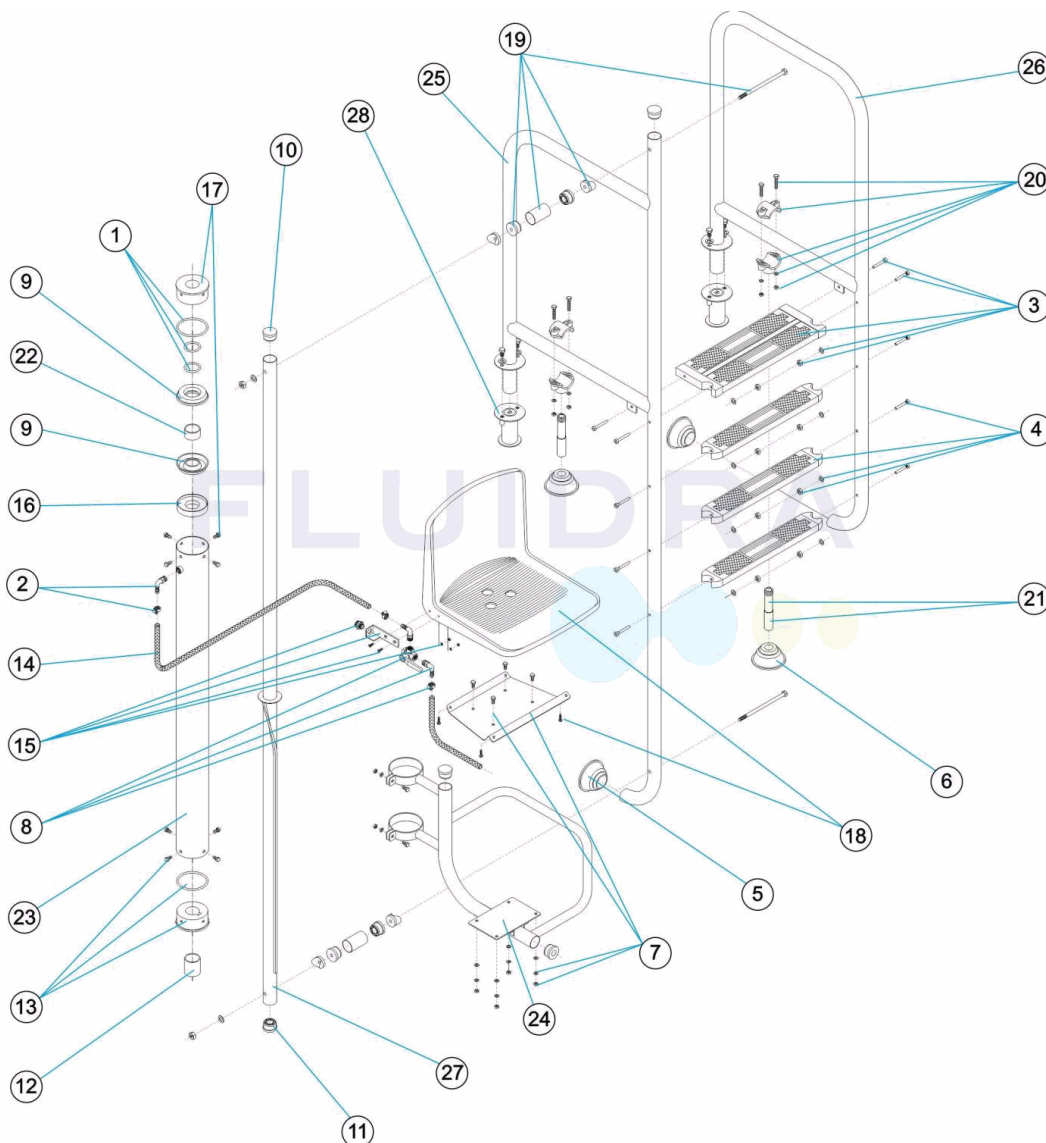
CODICE **11277, 15219, 28619, 28620, 28621, 28622**

DESCRIZIONE: **ELEVATORE IDRAULICO**

## OSSERVAZIONI

POS	CODICE	OSSERVAZIONI
25	11277R0800	PER: 11277, 28620
25	15219R0100	PER: 15219, 28619
26	11277R0900	PER: 11277, 28620
26	15219R0200	PER: 15219, 28619

CODE **11277, 15219, 28619, 28620, 28621, 28622**

 BESCHREIBUNG: **HYDRAULISCHER LIFTER**


## DEUTSCH

POS	CODE	BESCHREIBUNG	POS	CODE	BESCHREIBUNG
1	4401011501	DICHTUNGEN LIFT	15	4401011515	HALTERUNG VENTIL
2	4401011502	WINKEL UND FLANSCH	16	4401011516	HALTERUNG DICHTUNG
3	4401010805	SICHERHEITSSTUFE 316	17	4401011517	ABDECKUNG FÜHRUNG OBEN
4	4401010104	STUFE LUXE 316	18	4401011518	SITZ
5	4401010501	BEWEGLICHER ABSCHLUSS	19	4401011519	SET ANSCHLUSSEVERBINDUNG
6	4401011506	BEWEGLICHER ABSCHLUSS D. 28	20	4401011520	HILFSFLANSCH
7	4401011507	PLATINE SITZ	21	4401011521	HILFSROHR
8	4401011508	3-WEGE-VENTIL KOMPLETT	22	4401011505	FASSUNG ABSCHLUSS UNTEN
9	4401011509	DICHTUNG LIFT	23	11277R0600	ZYLINDER LIFT HYDRAULISCH
10	4401070208	STOPFEN D.43	24	11277R0400	HALTERUNG SITZ
11	4401050402	FASSUNGEN FÜHRUNG	25	* 11277R0800	HANDLAUF LANG L=1000
12	4401011512	SICHERHEITSSFASSUNG	25	* 15219R0100	HANDLAUF LANG L=650
13	4401011513	FASSUNG FÜHRUNG	26	* 11277R0900	HANDLAUF KURZ L=1000

\* -&gt; SIEHE ANMERKUNGSBLATT

CODE **11277, 15219, 28619, 28620, 28621, 28622**

BESCHREIBUNG: **HYDRAULISCHER LIFTER**

14	4401011514	ROHR EINGANG 0,9 M	26	* 15219R0200	HANDLAUF KURZ L=650
27	11277R0100	SET FÜHRUNGSRÖHR	28	00143	VERANKERUNG

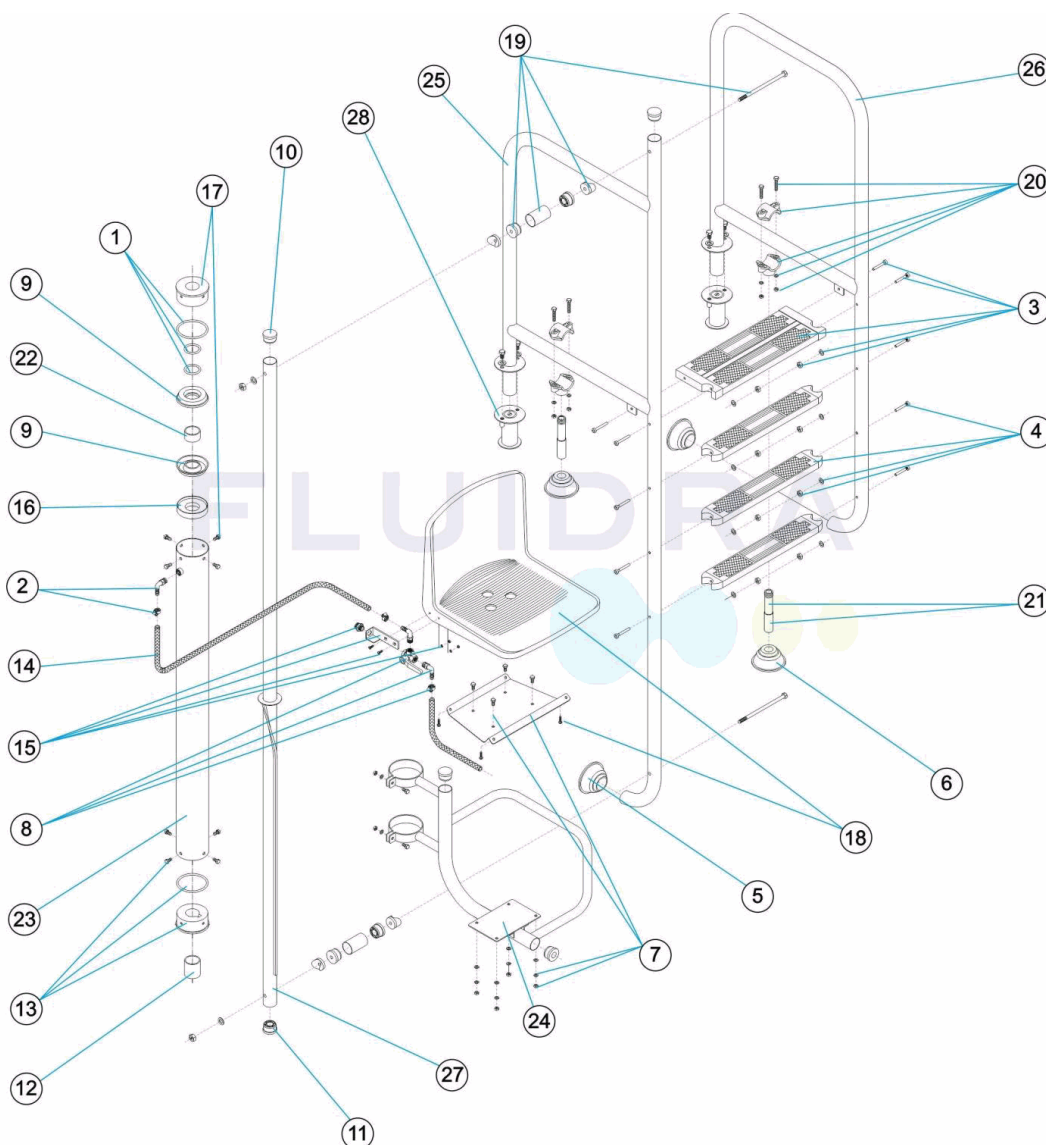
CODE **11277, 15219, 28619, 28620, 28621, 28622**

BESCHREIBUNG: **HYDRAULISCHER LIFTER**

## HINWEISE

POS	CODE	HINWEISE
25	11277R0800	FÜR: 11277, 28620
25	15219R0100	FÜR: 15219, 28619
26	11277R0900	FÜR: 11277, 28620
26	15219R0200	FÜR: 15219, 28619

CODIGO **11277, 15219, 28619, 28620, 28621, 28622**

 DESCRIÇÃO: **ELEVADOR HIDRÁULICO**

**PORTUGUES**

POS	CODIGO	DESCRIÇÃO	POS	CODIGO	DESCRIÇÃO
1	4401011501	JUNTAS ELEVADOR	15	4401011515	SUPORTE VÁLVULA
2	4401011502	COTOBELO E FLANGE	16	4401011516	APOIO JUNTA
3	4401010805	DEGRAU SEGURANÇA 316	17	4401011517	TAMPA GUIA SUPERIOR
4	4401010104	DEGRAU LUXE 316	18	4401011518	CADEIRA
5	4401010501	BATENTE ARTICULADA	19	4401011519	CONJUNTO UNIÃO LIGAÇÃO
6	4401011506	BATENTE ARTICULADA D 28	20	4401011520	ABRÇADEIRA DE APOIO
7	4401011507	PLACA ASSENTO	21	4401011521	TUBO DE APOIO
8	4401011508	VALVULA 3 VIAS COMPLETA	22	4401011505	CASQUILHOS
9	4401011509	JUNTA ELEVADOR	23	11277R0600	CILINDRO ELEVADOR
10	4401070208	TAMPÃO D.43	24	11277R0400	SUPORTE ASSENTO
11	4401050402	CONJ. CASQUILHOS	25	* 11277R0800	CORRIMÃO COMPRIDO L=1000
12	4401011512	CASQUILHO DE SEGURANÇA	25	* 15219R0100	CORRIMÃO COMPRIDO L=650
13	4401011513	CASQUILHO GUIA	26	* 11277R0900	CORRIMÃO CURTO L=1000

\* -&gt; VEJA A FICHA DE OBSERVAÇÕES



CODIGO **11277, 15219, 28619, 28620, 28621, 28622**

DESCRIÇÃO: **ELEVADOR HIDRÁULICO**

14	4401011514	TUBO ENTRADA 0,9 M.	26	* 15219R0200	CORRIMÃO CURTO L=650
27	11277R0100	CONJUNTO TUBO GUÍA	28	00143	ANCORA

CODIGO **11277, 15219, 28619, 28620, 28621, 28622**

DESCRIÇÃO: **ELEVADOR HIDRÁULICO**

## OBSERVAÇÕES

POS	CODIGO	OBSERVAÇÕES
25	11277R0800	PARA: 11277, 28620
25	15219R0100	PARA: 15219, 28619
26	11277R0900	PARA: 11277, 28620
26	15219R0200	PARA: 15219, 28619