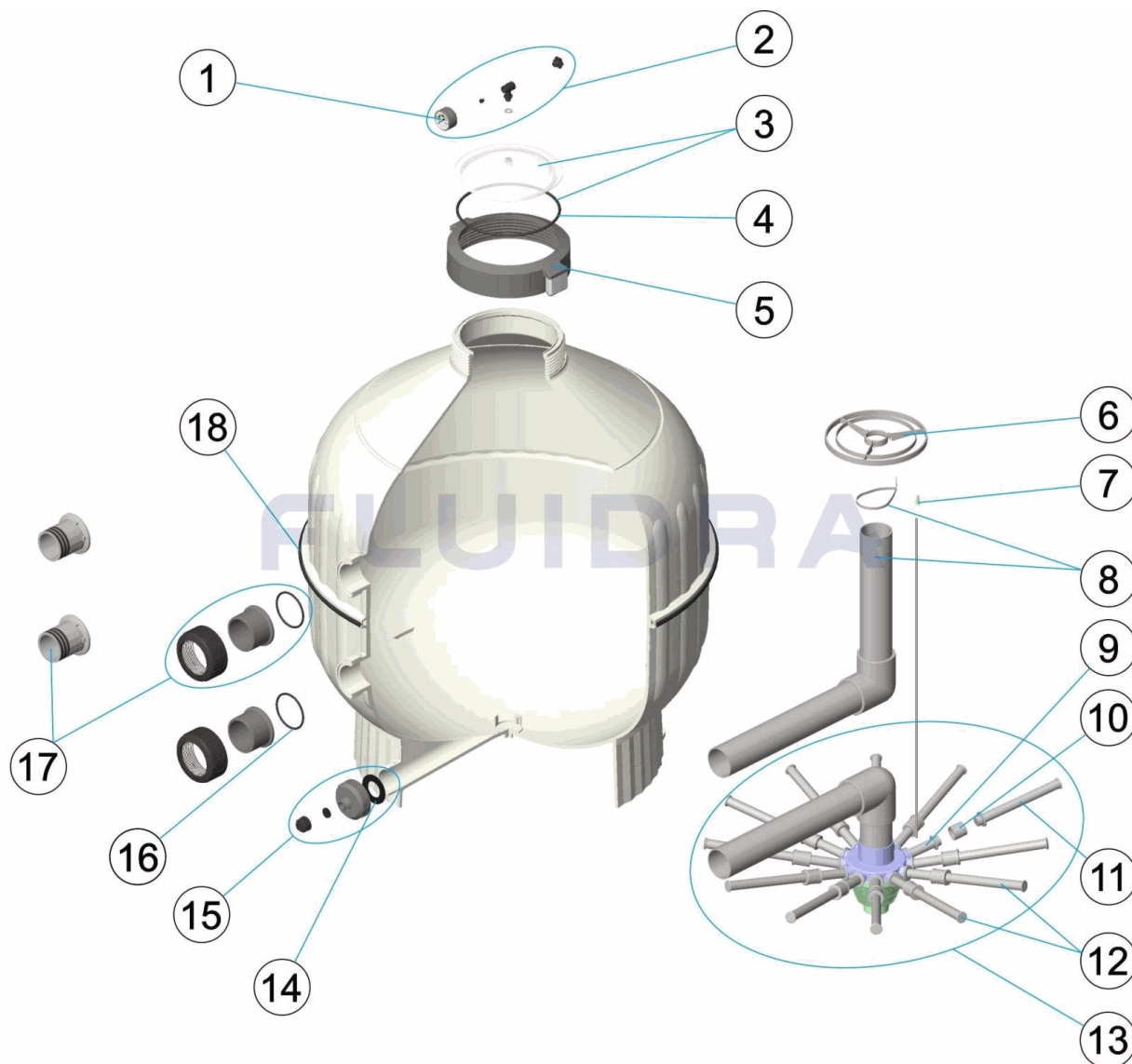


CODIGO **22402**

 DESCRIPCION: **FILTRO CANTABRIC 900**

ESPAÑOL

POS	CODIGO	DESCRIPCION	POS	CODIGO	DESCRIPCION
1	4404010103	MANOMETRO 1/8" 3 KG./C "	11	* 4404300712	BRAZO COLECTOR 3/4" 225M "
2	4404080104	MANOMETRO COMPLETO	12	4404180009	CJTO. BRAZOS COLECTOR D. 900 3/4"
3	4404180112	TAPA TRANSPARENTE + ANILLO	13	4404180011	CJTO. COLECTOR D.900
4	4404180111	JUNTA TORICA	14	4404180108	JUNTA PLANA FILTRO
5	4404180113	TAPA ROSCADA PARTIDA	15	4404180114	PURGA ARENA 2'
6	4404180122	ANILLO CENTRADOR D. 227	16	4404010351	JUNTA TORICA 81X5
7	4404040108	PURGA AIRE	17	4404180115	RACORD 2 1/2' ROSCADO
8	4404180008	CJTO. DIFUSOR D. 900	17	4404180116	RACORD 2 1/2' ENCOLADO
9	* 4404180117	BRAZO COLECTOR 3/4" 100 M "	18	4404180029	PERFIL EMBELLECEDOR D. 900
10	* 4404180118	MANGUITO ENLACE 3/4"			

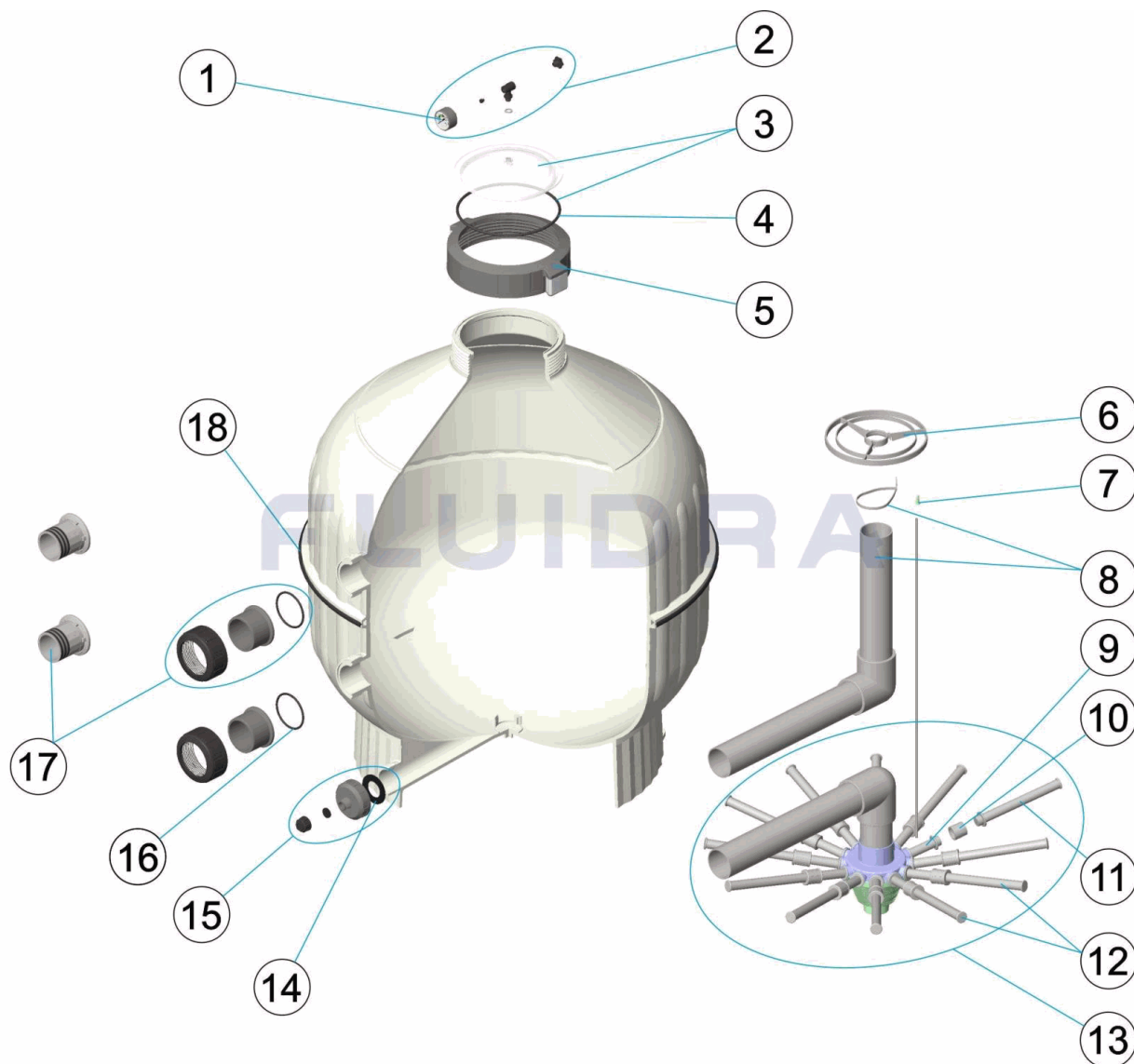
CODIGO **22402**

DESCRIPCION: **FILTRO CANTABRIC 900**

OBSERVACIONES

POS	CODIGO	OBSERVACIONES
9	4404180117	PARA: 22402 [3UT]
10	4404180118	PARA: 22402 [3UT]
11	4404300712	PARA: 22402 [6UT]

CODE **22402**

 DESCRIPTION: **FILTRE CANTABRIC 900**

FRANCAIS

POS	CODE	DESCRIPTION	POS	CODE	DESCRIPTION
1	4404010103	MANOMETRE 1/8" 3 KG./C "	11	* 4404300712	BRAS DE REPARTITEUR 3/4" 225M "
2	4404080104	MANOMETRE COMPLET	12	4404180009	ENSEMBLE BRAS DE REPARTITEUR D. 900
3	4404180112	COUVERCLE TRANSPARENT + JOINT	13	4404180011	ENSEMBLE COLLECTEUR D. 900
4	4404180111	JOINT TORIQUE	14	4404180108	JOINT PLAT FILTRE
5	4404180113	ECROU DE COUVERCLE DEUX PARTIES	15	4404180114	PURGE SABLE 2"
6	4404180122	DISQUE CENTREUR D. 227	16	4404010351	JOINT TORIQUE 81X5
7	4404040108	PURGE D'AIR	17	4404180115	RACCORDS 2 1/2" À VISSER
8	4404180008	ENSEMBLE DIFFUSEUR D. 900	17	4404180116	RACCORDS 2 1/2" À COLLER
9	* 4404180117	BRAS DE REPARTITEUR 3/4" 100M "	18	4404180029	ANNEAU DE PROTECTION D. 900
10	* 4404180118	MANCHON 3/4"			

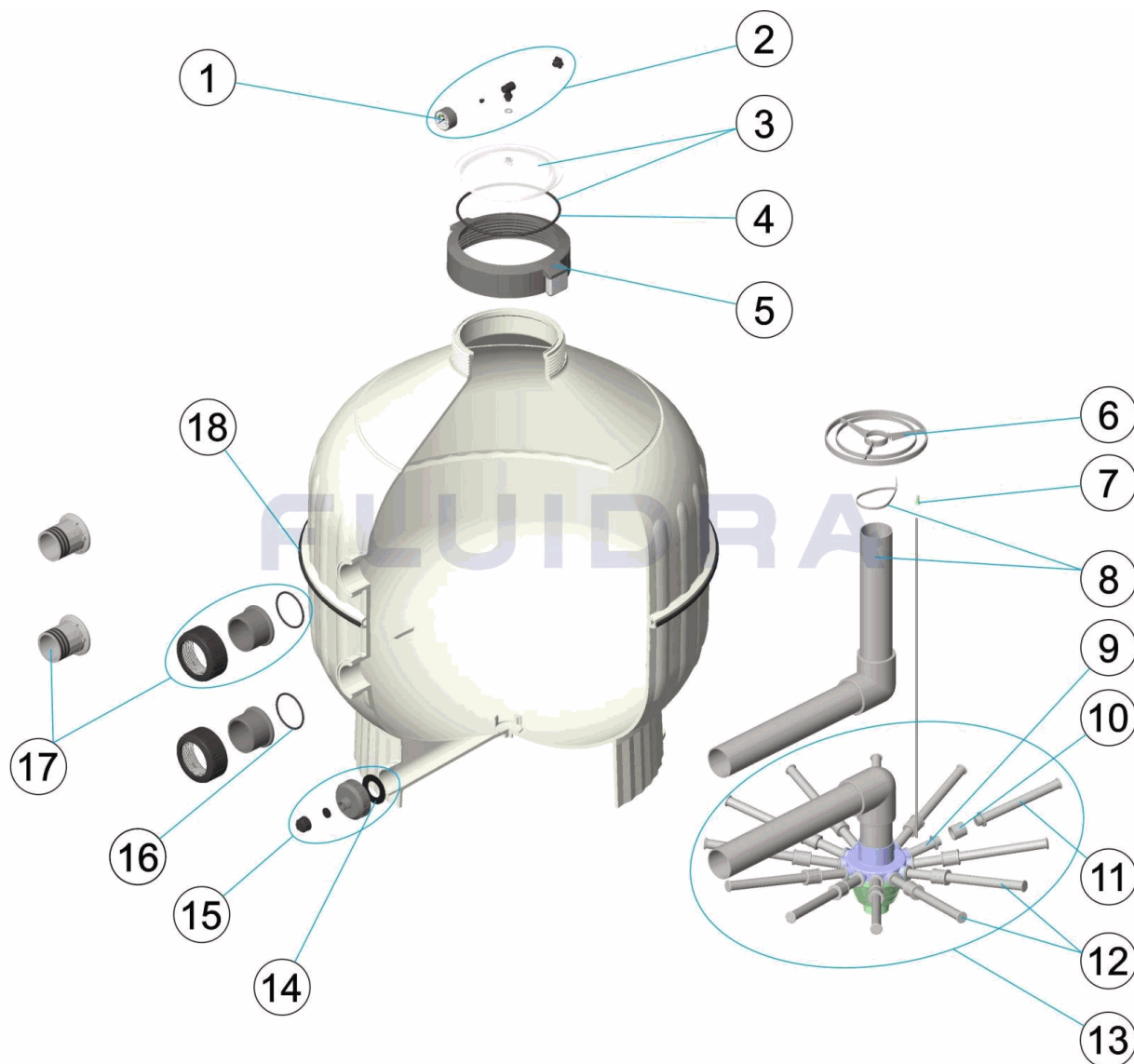
CODE **22402**

DESCRIPTION: **FILTRE CANTABRIC 900**

OBSERVATIONS

POS	CODE	OBSERVATIONS
9	4404180117	POUR: 22402 [3UT]
10	4404180118	POUR: 22402 [3UT]
11	4404300712	POUR: 22402 [6UT]

CODE **22402**

 DESCRIPTION: **CANTABRIC FILTER 900**


ENGLISH

POS	CODE	DESCRIPTION	POS	CODE	DESCRIPTION
1	4404010103	PRESSURE GAUGE 1/8" 3 KG./C "	11	* 4404300712	MANIFOLD ARM 3/4" 225 M "
2	4404080104	COMPLETE PRESSURE GAUGE UNIT	12	4404180009	MANIFOLD ARM ASSEMBLY D. 900
3	4404180112	TRANSPARENT LID + GASKET	13	4404180011	MANIFOLD ASSEMBLY D. 900
4	4404180111	O' RING	14	4404180108	FILTER FLAT GASKET
5	4404180113	SPLIT THREADED COLLAR	15	4404180114	SAND PURGE 2'
6	4404180122	CENTERING RING D. 227	16	4404010351	81X5 O-RING
7	4404040108	AIR PURGE	17	4404180115	2 1/2' BSP EXTERNAL UNIONS
8	4404180008	DIFFUSER ASSEMBLY D. 900	17	4404180116	2 1/2' PLAIN EXTERNAL UNIONS
9	* 4404180117	MANIFOLD ARM 3/4" 100 M "	18	4404180029	PROFILE FACEPLATE D. 900
10	* 4404180118	UNION BUSH 3/4"			

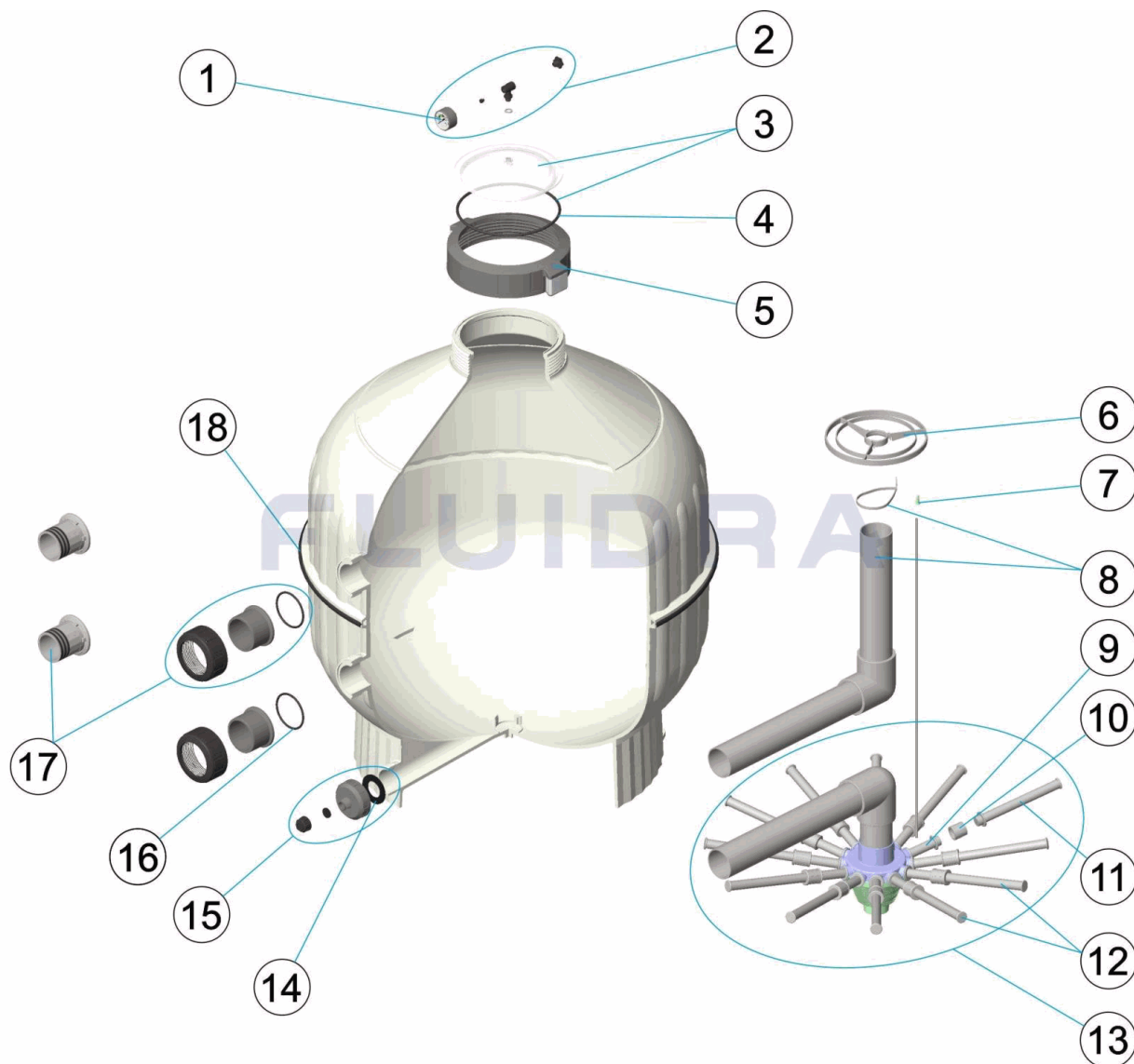
CODE **22402**

DESCRIPTION: **CANTABRIC FILTER 900**

OBSERVATIONS

POS	CODE	OBSERVATIONS
9	4404180117	FOR: 22402 [3UT]
10	4404180118	FOR: 22402 [3UT]
11	4404300712	FOR: 22402 [6UT]

CODICE **22402**

 DESCRIZIONE: **FILTRO CANTABRIC 900**

ITALIANO

POS	CODICE	DESCRIZIONE	POS	CODICE	DESCRIZIONE
1	4404010103	MANOMETRO 1/8" 3 KG./C "	11	* 4404300712	CANDELOTTO COLLECTORE 3/4" 225M "
2	4404080104	MANOMETRO COMPLETO	12	4404180009	GRUPPO CANDELOTTO COLLECTORE D. 900
3	4404180112	COPERCHIO TRASPARENTE + ANELLO	13	4404180011	KIT COLLETTORE D. 900
4	4404180111	O-RING	14	4404180108	GUARNIZIONE PIANA FILTRO
5	4404180113	GHIERA COPERCHIO	15	4404180114	SCARICO SABBIA 2'
6	4404180122	ANELLO CENTRAGGIO D. 227	16	4404010351	O-RING 81X5
7	4404040108	SFIATO ARIA	17	4404180115	RACCORDI USCITA 2 '
8	4404180008	RACCORDO DIFFUSORE D. 900	17	4404180116	RACCORDI USCITA 75
9	* 4404180117	CANDELOTTO COLLECTORE 3/4" 100M "	18	4404180029	PROFILO FLANGIA D. 900
10	* 4404180118	MANICOTTO DA 1" 3/4"			

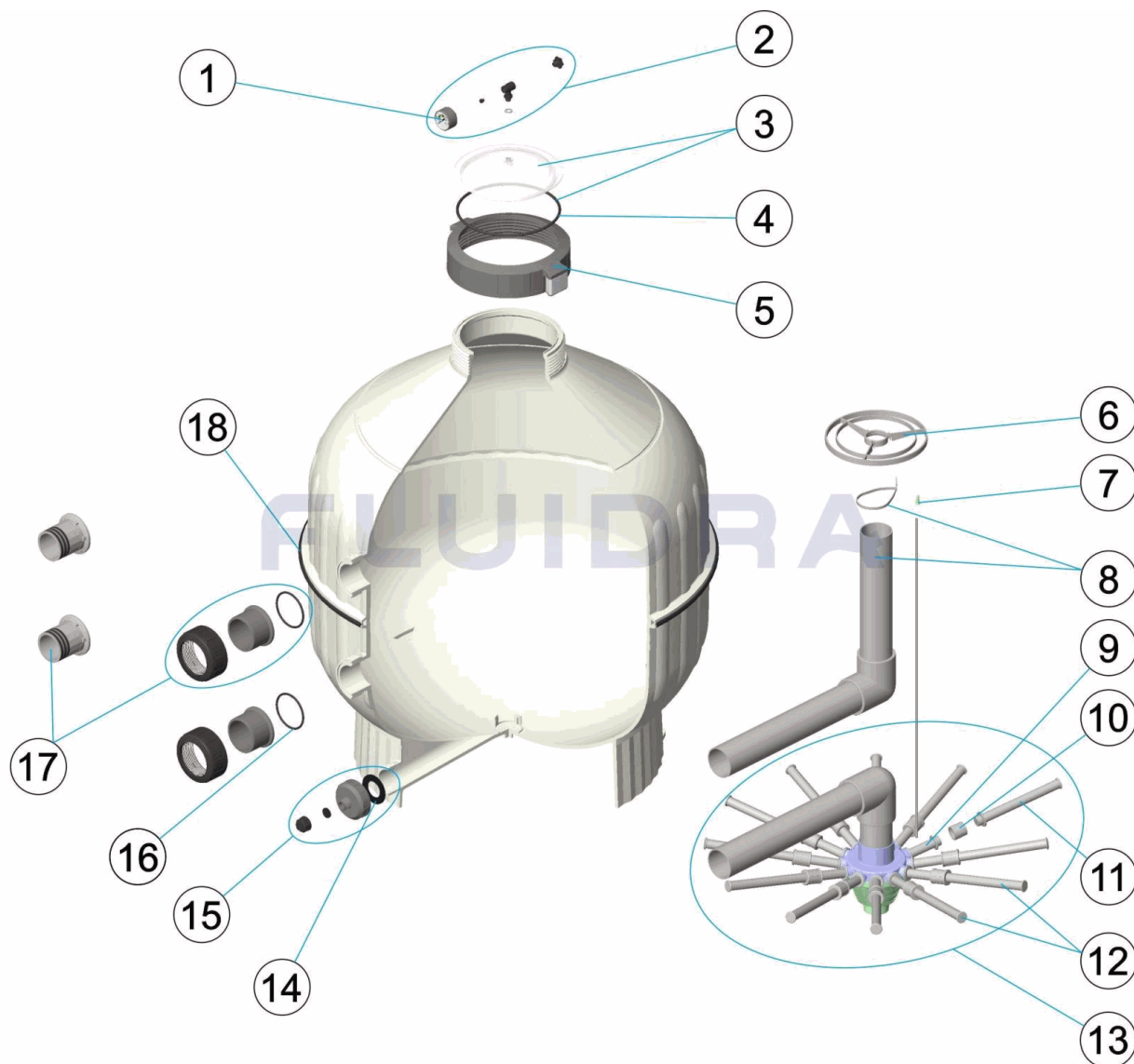
CODICE **22402**

 DESCRIZIONE: **FILTRO CANTABRIC 900**

OSSERVAZIONI

POS	CODICE	OSSERVAZIONI
9	4404180117	PER: 22402 [3UT]
10	4404180118	PER: 22402 [3UT]
11	4404300712	PER: 22402 [6UT]

CODE **22402**

 BESCHREIBUNG: **FILTER CANTABRIC 900**

DEUTSCH

POS	CODE	BESCHREIBUNG	POS	CODE	BESCHREIBUNG
1	4404010103	MANOMETER 1/8" 3 KG/C "	11	* 4404300712	FILTERSTERN-SCHLITZROHR 3/4" 225M "
2	4404080104	MANOMETER KOMPLETT	12	4404180009	SET FILTERSTERN-SCHLITZROHR D. 900 3/4"
3	4404180112	ABDECKUNG TRANSPARENT MIT RING	13	4404180011	SAMMELROHRSET D. 900
4	4404180111	O-RING	14	4404180108	FLACHDICHTUNG FILTER
5	4404180113	ABDECKUNG GEWINDE	15	4404180114	SANDENTLEERUNG 2'
6	4404180122	ZENTRIERRING D. 227	16	4404010351	O-RING 81X5
7	4404040108	ENTLÜFTUNG	17	4404180115	GEWINDE 2 1/2'
8	4404180008	SET WASSERVERTEILER D. 900	17	4404180116	GEWINDESTÜCK 2 1/2' GEKLEBT
9	* 4404180117	FILTERSTERN-SCHLITZROHR 3/4" 100 M "	18	4404180029	PROFIL BLENDE D. 900
10	* 4404180118	NIPPEL ANSCHLUSS 3/4"			

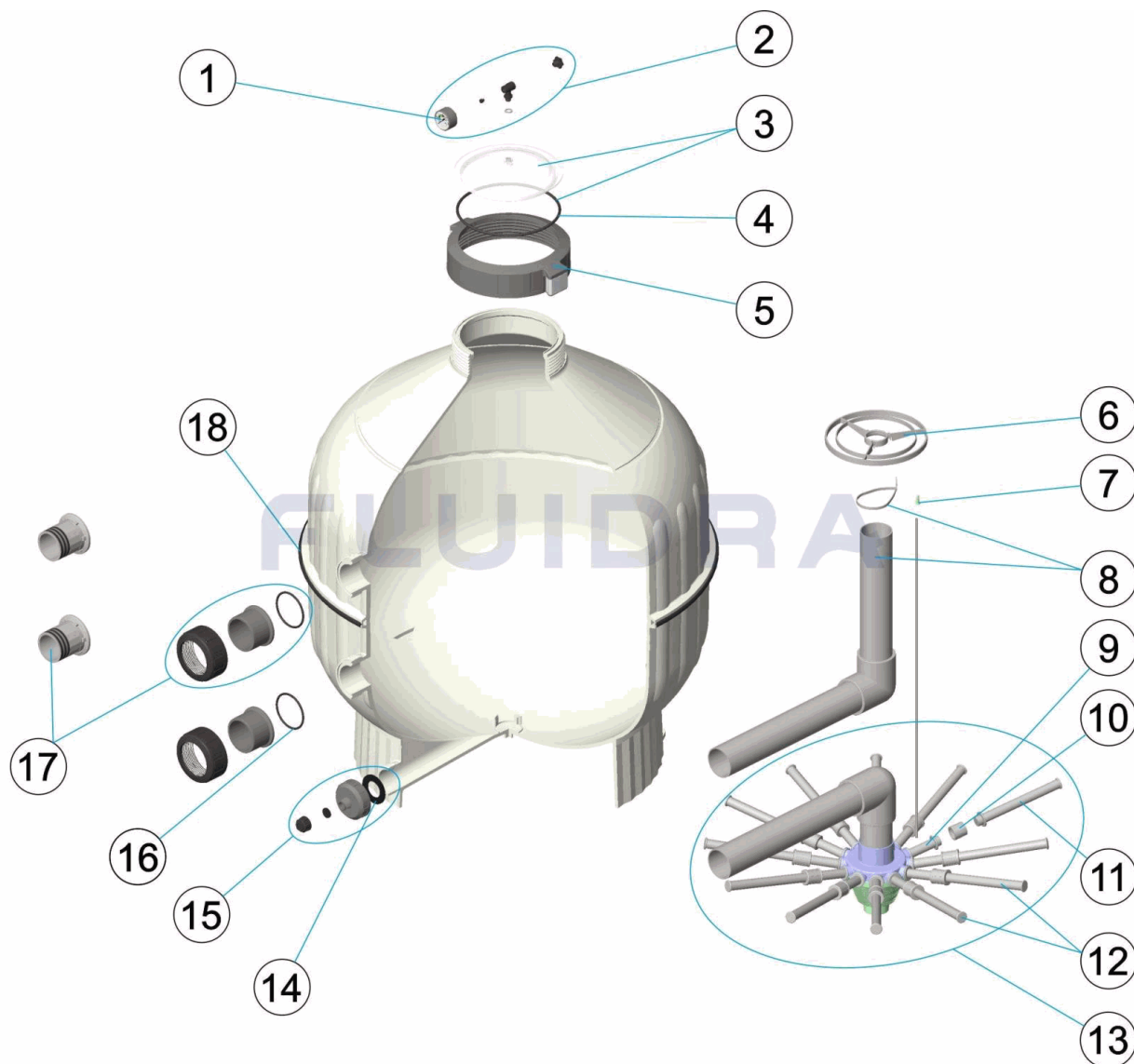
CODE **22402**

BESCHREIBUNG: **FILTER CANTABRIC 900**

HINWEISE

POS	CODE	HINWEISE
9	4404180117	FÜR: 22402 [3UT]
10	4404180118	FÜR: 22402 [3UT]
11	4404300712	FÜR: 22402 [6UT]

CODIGO **22402**

 DESCRIÇÃO: **FILTRO CANTABRIC 900**

PORTUGUES

POS	CODIGO	DESCRIÇÃO	POS	CODIGO	DESCRIÇÃO
1	4404010103	MANOMETRO 1/8" 3 KG./C "	11	* 4404300712	BRAÇO COLECTOR 3/4" 225M "
2	4404080104	MANÓMETRO COMPLETO	12	4404180009	CJTO. DIFUSOR D. 900
3	4404180112	TAMPA TRANSPARENTE + ARO	13	4404180011	CJTO. COLECTOR D. 900
4	4404180111	JUNTA TÓRICA	14	4404180108	JUNTA PLANA FILTRO
5	4404180113	TAMPA ROSCADA PARTIDA	15	4404180114	PURGA AREIA 2'
6	4404180122	ARO CENTRADOR D. 227	16	4404010351	JUNTA TÓRICA 81X5
7	4404040108	PURGA AREIA	17	4404180115	RACORD 2 1/2" ROSCAD "
8	4404180008	CJTO. DIFUSOR D. 900	17	4404180116	RACORD 2 1/2" COLAD "
9	* 4404180117	BRAÇO COLECTOR 3/4" 100M "	18	4404180029	PERFIL EMBELEZADOR D. 900
10	* 4404180118	MANGUITO UNIÃO 3/4"			

CODIGO **22402**

DESCRIÇÃO: **FILTRO CANTABRIC 900**

OBSERVACÕES

POS	CODIGO	OBSERVACÕES
9	4404180117	PARA: 22402 [3UT]
10	4404180118	PARA: 22402 [3UT]
11	4404300712	PARA: 22402 [6UT]