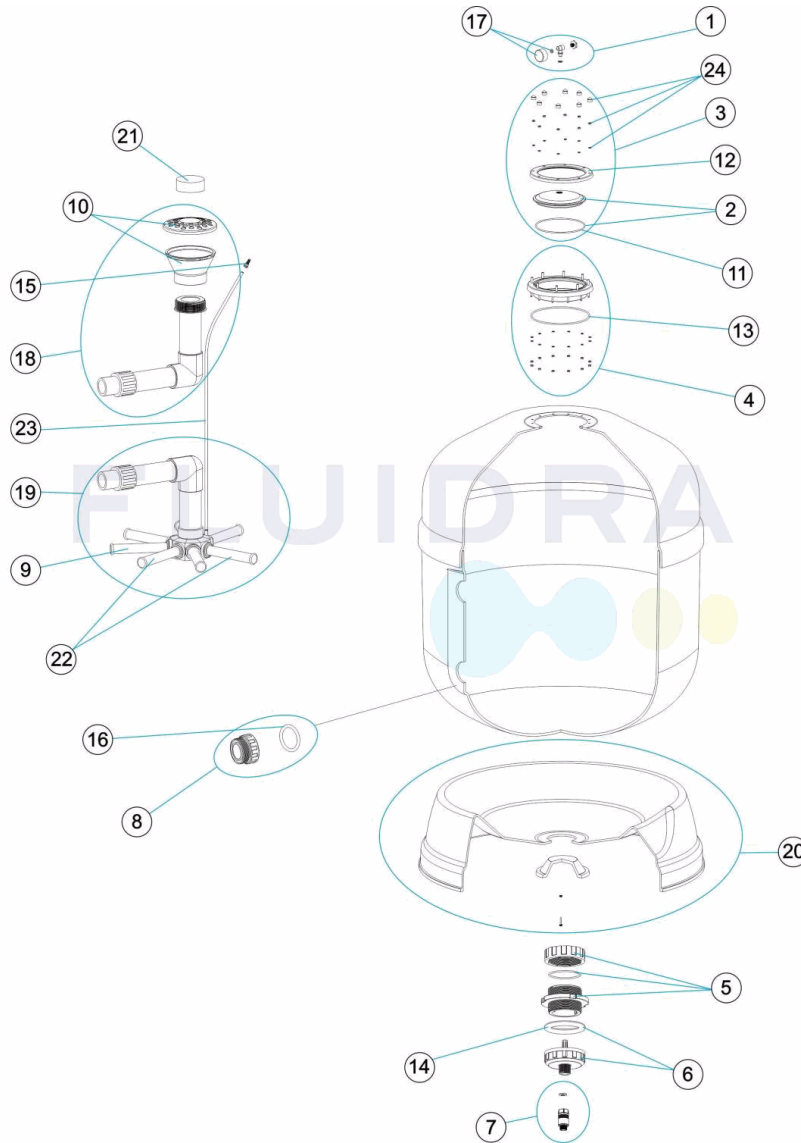


CODIGO **36596, 36597, 36598, 36599**

DESCRIPCION: **FILTRO ATLAS**



ESPAÑOL

POS	CODIGO	DESCRIPCION	POS	CODIGO	DESCRIPCION
1	4404080104	MANOMETRO COMPLETO	10	* 4404290110	PIÑA DIFUSORA 1 1/2"
2	4404190303	TAPA TRANSPARENTE D. 220 + JUNTA	10	* 4404290111	PIÑA DIFUSORA 2" - 2 1/2"
3	4404190325	GRUPO TAPA TRANSPARENTE	11	4404260106	JUNTA ARO FIJACION VALVULA
4	4404160809	ARO CUELLO 20 TORNILLOS	12	4404160849	ARO FIJACION TAPA
5	4404290105	MACHON DOBLE ROSCA DESCARGA 2 1/2" INTERIC	13	4404020116	JUNTA TORICA 255X4
6	4404290106	TUERCA DESCARGA EXTERIOR	14	4404180108	JUNTA PLANA FILTRO
7	4404290107	VALVULA DE SEGURIDAD	15	4404040108	PURGA AIRE
8*	4404040103	RACORD 1 1/2" + JUNTA TORIC "	16*	4404040115	JUNTA TORICA D. 60X8
8*	4404040112	RACORD SALIDA 2" + JUNTA TORIC "	16*	4404040211	JUNTA TORICA D. 70X5
8*	4404290108	RACOR SALIDA 2 1/2" + JUNTA TORIC "	17	4404010103	MANOMETRO 1/8" 3 KG./C "
9*	4404300917	BRAZO COLECTOR 1" 110 M "	18*	4404010168	CJTO. DIFUSOR D. 500
9*	4404300915	BRAZO COLECTOR 1" 175 M "	18*	4404010169	CJTO. DIFUSOR D. 600
9*	4404300916	BRAZO COLECTOR 1" 225 M "	18*	4404010170	CJTO. DIFUSOR D. 750

*** -> VER HOJA DE OBSERVACIONES**

CODIGO **36596, 36597, 36598, 36599**

DESCRIPCION: **FILTRO ATLAS**

9	* 4404290109	BRAZO COLECTOR 1" 265 M "	18	* 4404010171	CJTO. DIFUSOR D. 900
19	* 4404010172	CJTO. COLECTOR D. 500	21	* 4404010180	TAPON PARA LLENADO ARENA 1 1/2"
19	* 4404010173	CJTO. COLECTOR D. 600	21	* 4404010181	TAPON PARA LLENADO ARENA 2 - 2 1/2"
19	* 4404010174	CJTO. COLECTOR D. 750	22	* 4404010025	CJTO. BRAZOS COLECTOR D. 400
19	* 4404010175	CJTO. COLECTOR D. 900	22	* 4404010026	CJTO. BRAZOS COLECTOR D. 500
20	* 4404010176	PIE FILTRO D. 500	22	* 4404010028	CJTO. BRAZOS COLECTOR D. 650
20	* 4404010177	PIE FILTRO D. 600	22	* 4404010048	CJTO. BRAZOS COLECTOR D. 750
20	* 4404010178	PIE FILTRO D. 750	23	4404301003	PURGA AIRE + TUBO L=670
20	* 4404010179	PIE FILTRO D. 900	24	4404190319	TORNILLERIA CIERRE TAPA

CODIGO 36596, 36597, 36598, 36599

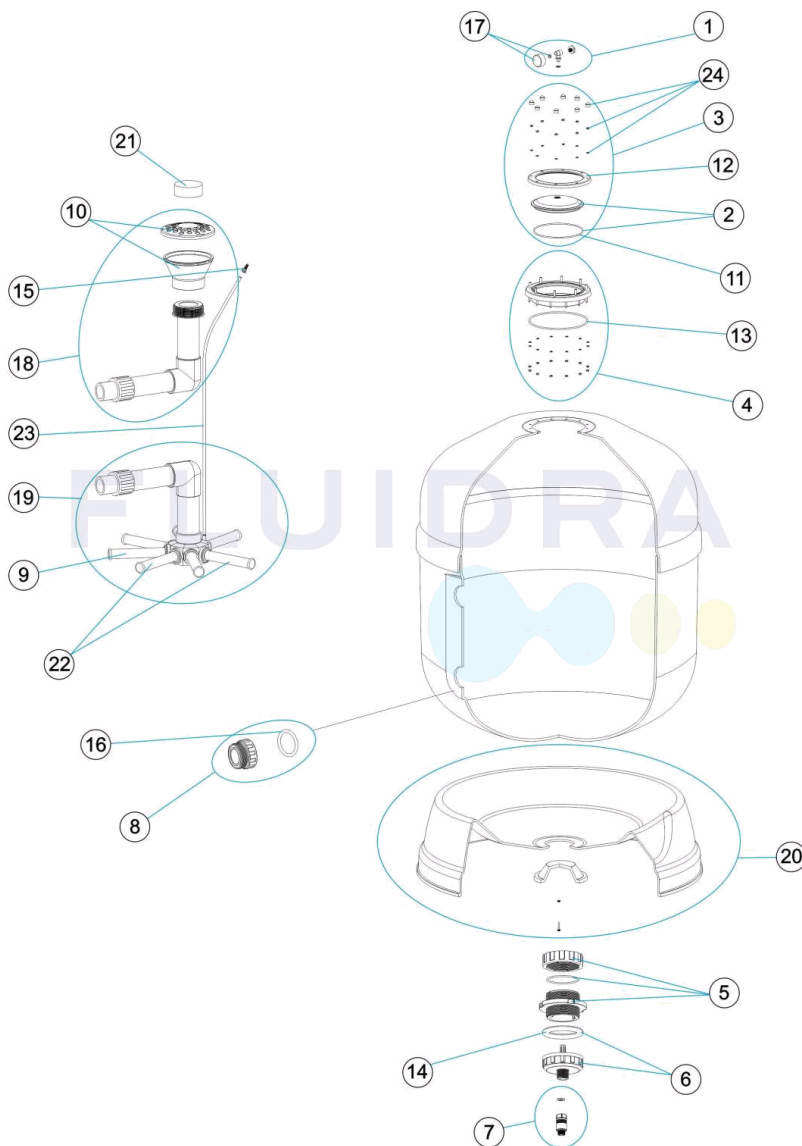
DESCRIPCION: FILTRO ATLAS

OBSERVACIONES

POS	CODIGO	OBSERVACIONES
8	4404040103	PARA: 36596, 36597
8	4404040112	PARA: 36598
8	4404290108	PARA: 36599
9	4404300917	PARA: 36596 [4UT]
9	4404300915	PARA: 36597 [4UT]
9	4404300916	PARA: 36598 [6UT]
9	4404290109	PARA: 36599 [6UT]
10	4404290110	PARA: 36596, 36597
10	4404290111	PARA: 36598, 36599
16	4404040115	PARA: 36596, 36597, 36598
16	4404040211	PARA: 36599
18	4404010168	PARA: 36596
18	4404010169	PARA: 36597
18	4404010170	PARA: 36598
18	4404010171	PARA: 36599
19	4404010172	PARA: 36596
19	4404010173	PARA: 36597
19	4404010174	PARA: 36598
19	4404010175	PARA: 36599
20	4404010176	PARA: 36596
20	4404010177	PARA: 36597
20	4404010178	PARA: 36598
20	4404010179	PARA: 36599
21	4404010180	PARA: 36596, 36597
21	4404010181	PARA: 36598, 36599
22	4404010025	PARA: 36596
22	4404010026	PARA: 36597
22	4404010028	PARA: 36598
22	4404010048	PARA: 36599

CODE 36596, 36597, 36598, 36599

DESCRIPTION: FILTRE ATLAS



FRANCAIS

POS	CODE	DESCRIPTION	POS	CODE	DESCRIPTION
1	4404080104	MANOMETRE COMPLET	10	* 4404290110	POMME DIFFUSEUSE 1 1/2"
2	4404190303	COUVERCLE TRANSPARENT D.220 + JOINT	10	* 4404290111	POMME DIFFUSEUSE 2"
3	4404190325	ENSEMBLE COUVERCLE TRANSPARENT	11	4404260106	JOINT BRIDE FIXATION VANNE TOP
4	4404160809	BRIDE GORGE 20 VIS	12	4404160849	BRIDE DE FIXATION COUVERCLE
5	4404290105	MANCHON A VISSER MALE X MALE 2 1/2" POUR VII	13	4404020116	JOINT TORIQUE 255X4
6	4404290106	RACCORD DÉCHARGE EXTÉRIEUR	14	4404180108	JOINT PLAT FILTRE
7	4404290107	VANNE DE SÉCURITÉ	15	4404040108	PURGE D'AIR
8*	4404040103	RACCORD 1 1/2" + JOINT TORIQU "	16*	4404040115	JOINT TORIQUE D 60X8
8*	4404040112	RACCORD SORTIE 2" + JOINT TORIQU "	16*	4404040211	JOINT TORIQUE D 70X5
8*	4404290108	RACCOR SORTIE 2 1/2" + JOINT TORIQU "	17	4404010103	MANOMETRE 1/8" 3 KG./C "
9*	4404300917	BRAS DE REPARTITEUR 1" 110 M "	18*	4404010168	ENSEMBLE DIFFUSEUR D. 500
9*	4404300915	BRAS DE REPARTITEUR 1" 175 M "	18*	4404010169	ENSEMBLE DIFFUSEUR D. 600
9*	4404300916	BRAS DE REPARTITEUR 1" 225 M "	18*	4404010170	ENSEMBLE DIFFUSEUR D. 750

* -> VOIR FICHE D'OBSERVATIONS

CODE **36596, 36597, 36598, 36599**

DESCRIPTION: **FILTRE ATLAS**

9	* 4404290109	BRAS DE REPARTITEUR 1" 265 M/M "	18	* 4404010171	ENSEMBLE DIFFUSEUR D. 900
19	* 4404010172	ENSEMBLE COLLECTEUR D. 500	21	* 4404010180	BOUCHON DE REMPLISSAGE 1 1/2"
19	* 4404010173	ENSEMBLE COLLECTEUR D. 600	21	* 4404010181	BOUCHON DE REMPLISSAGE 2"- 2 1/2"
19	* 4404010174	ENSEMBLE COLLECTEUR D. 750	22	* 4404010025	ENSEMBLE BRAS DE REPARTITEUR D. 400
19	* 4404010175	ENSEMBLE COLLECTEUR D. 900	22	* 4404010026	ENSEMBLE BRAS DE REPARTITEUR D. 500
20	* 4404010176	SOCLE FILTRE D. 500	22	* 4404010028	ENSEMBLE BRAS DE REPARTITEUR D. 650
20	* 4404010177	SOCLE FILTRE D. 600	22	* 4404010048	ENSEMBLE BRAS DE REPARTITEUR D. 750
20	* 4404010178	SOCLE FILTRE D. 750	23	4404301003	PURGE AIR + TUBE L=670
20	* 4404010179	SOCLE FILTRE D. 900	24	4404190319	VISSERIE DE FERMENTURE COUVERCLE

CODE **36596, 36597, 36598, 36599**

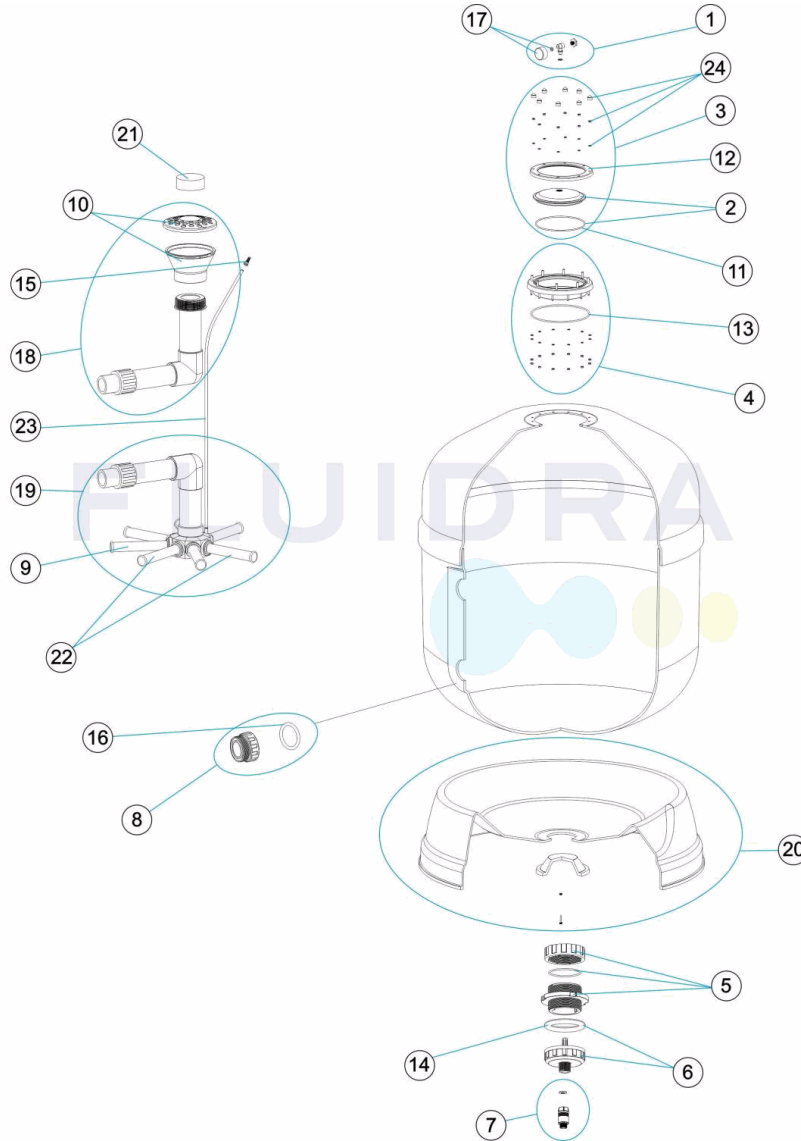
DESCRIPTION: **FILTRE ATLAS**

OBSERVATIONS

POS	CODE	OBSERVATIONS
8	4404040103	POUR: 36596, 36597
8	4404040112	POUR: 36598
8	4404290108	POUR: 36599
9	4404300917	POUR: 36596 [4UT]
9	4404300915	POUR: 36597 [4UT]
9	4404300916	POUR: 36598 [6UT]
9	4404290109	POUR: 36599 [6UT]
10	4404290110	POUR: 36596, 36597
10	4404290111	POUR: 36598, 36599
16	4404040115	POUR: 36596, 36597, 36598
16	4404040211	POUR: 36599
18	4404010168	POUR: 36596
18	4404010169	POUR: 36597
18	4404010170	POUR: 36598
18	4404010171	POUR: 36599
19	4404010172	POUR: 36596
19	4404010173	POUR: 36597
19	4404010174	POUR: 36598
19	4404010175	POUR: 36599
20	4404010176	POUR: 36596
20	4404010177	POUR: 36597
20	4404010178	POUR: 36598
20	4404010179	POUR: 36599
21	4404010180	POUR: 36596, 36597
21	4404010181	POUR: 36598, 36599
22	4404010025	POUR: 36596
22	4404010026	POUR: 36597
22	4404010028	POUR: 36598
22	4404010048	POUR: 36599

CODE **36596, 36597, 36598, 36599**

DESCRIPTION: **ATLAS FILTER**



ENGLISH

POS	CODE	DESCRIPTION	POS	CODE	DESCRIPTION
1	4404080104	COMPLETE PRESSURE GAUGE UNIT	10	* 4404290110	DISTRIBUTOR 1 1/2"
2	4404190303	TRANSPARENT LID D.220 + 'O' RING	10	* 4404290111	DISTRIBUTOR 2"
3	4404190325	KIT TRANSPARENT LID	11	4404260106	VALVE TOP RING FIXING GASKET
4	4404160809	20-SCREW NECK RING	12	4404160849	LIF FIXING RING
5	4404290105	DOUBLE THREAD DISCHARGE PORT 2 1/2" "	13	4404020116	O' RING 255X4
6	4404290106	SCREWDISCHARGE PORT EXTERIOR	14	4404180108	FILTER FLAT GASKET
7	4404290107	SAFETY VALVE	15	4404040108	AIR PURGE
8*	4404040103	FITTING 1 1/2" + O'RIN "	16*	4404040115	O' RING D. 60X8
8*	4404040112	2" OUTLET FITTING + O'RIN "	16*	4404040211	O' RING D. 70X5
8*	4404290108	OUTLET UNION 2 1/2" + O-RIN "	17	4404010103	PRESSURE GAUGE 1/8" 3 KG./C "
9*	4404300917	MANIFOLD ARM 1" 110 M "	18*	4404010168	DIFFUSER ASSEMBLY D. 500
9*	4404300915	MANIFOLD ARM 1" 175 M "	18*	4404010169	DIFFUSER ASSEMBLY D. 600
9*	4404300916	MANIFOLD ARM 1" 225 M "	18*	4404010170	DIFFUSER ASSEMBLY D. 750

*** -> SEE OBSERVATIONS SHEET**

CODE **36596, 36597, 36598, 36599**

DESCRIPTION: **ATLAS FILTER**

9	* 4404290109	COLLECTOR ARM 1" 265 M "	18	* 4404010171	DIFFUSER ASSEMBLY D. 900
19	* 4404010172	MANIFOLD ASSEMBLY D. 500	21	* 4404010180	1 1/2" FILLING CA "
19	* 4404010173	MANIFOLD ASSEMBLY D. 600	21	* 4404010181	2" - 2 1/2" FILLING CA "
19	* 4404010174	MANIFOLD ASSEMBLY D. 750	22	* 4404010025	MANIFOLD ARM ASSEMBLY D. 400
19	* 4404010175	MANIFOLD ASSEMBLY D. 900	22	* 4404010026	MANIFOLD ARM ASSEMBLY D. 500
20	* 4404010176	FILTER BASE D. 500	22	* 4404010028	MANIFOLD ARM ASSEMBLY D. 650
20	* 4404010177	FILTER BASE D. 600	22	* 4404010048	MANIFOLD ARM ASSEMBLY D. 750
20	* 4404010178	FILTER BASE D. 750	23	4404301003	AIR PURGE + PIPE L=670
20	* 4404010179	FILTER BASE D. 900	24	4404190319	SCREW SET FOR LID CLOSING

CODE **36596, 36597, 36598, 36599**

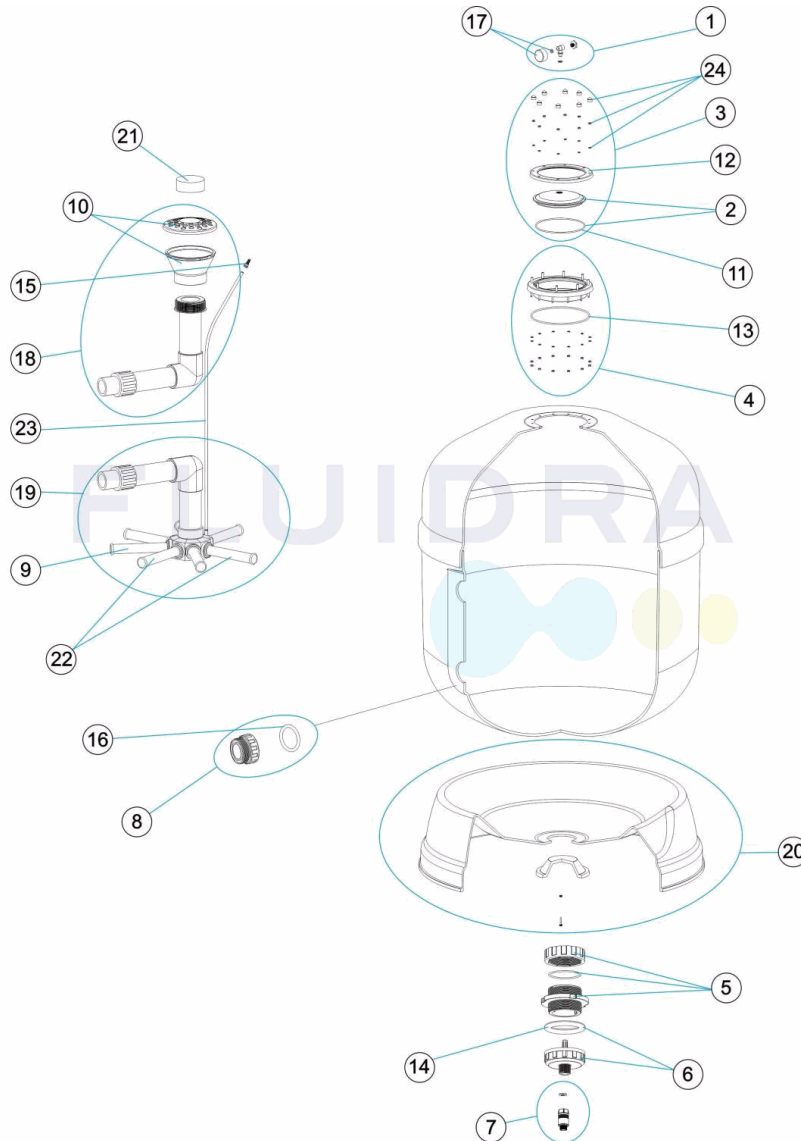
DESCRIPTION: **ATLAS FILTER**

OBSERVATIONS

POS	CODE	OBSERVATIONS
8	4404040103	FOR: 36596, 36597
8	4404040112	FOR: 36598
8	4404290108	FOR: 36599
9	4404300917	FOR: 36596 [4UT]
9	4404300915	FOR: 36597 [4UT]
9	4404300916	FOR: 36598 [6UT]
9	4404290109	FOR: 36599 [6UT]
10	4404290110	FOR: 36596, 36597
10	4404290111	FOR: 36598, 36599
16	4404040115	FOR: 36596, 36597, 36598
16	4404040211	FOR: 36599
18	4404010168	FOR: 36596
18	4404010169	FOR: 36597
18	4404010170	FOR: 36598
18	4404010171	FOR: 36599
19	4404010172	FOR: 36596
19	4404010173	FOR: 36597
19	4404010174	FOR: 36598
19	4404010175	FOR: 36599
20	4404010176	FOR: 36596
20	4404010177	FOR: 36597
20	4404010178	FOR: 36598
20	4404010179	FOR: 36599
21	4404010180	FOR: 36596, 36597
21	4404010181	FOR: 36598, 36599
22	4404010025	FOR: 36596
22	4404010026	FOR: 36597
22	4404010028	FOR: 36598
22	4404010048	FOR: 36599

CODICE **36596, 36597, 36598, 36599**

DESCRIZIONE: **FILTRO ATLAS**



ITALIANO

POS	CODICE	DESCRIZIONE	POS	CODICE	DESCRIZIONE
1	4404080104	MANOMETRO COMPLETO	10	* 4404290110	DIFFUSORE 1 1/2"
2	4404190303	COPERCHIO TRASPARENTE D.220 + O-RING	10	* 4404290111	DIFFUSORE 2"
3	4404190325	GRUPPO COPERCHIO TRASPARENTE	11	4404260106	GUARNIZIONE FLANGIA FISSAGGIO VALVOLE TOP
4	4404160809	ANELLO COLLO 20 VITI	12	4404160849	FLANGIA FISSAGGIO COPERCHIO
5	4404290105	RACCORDO FILETTATO 1/2" PARTE INTERN "	13	4404020116	O-RING 255X4
6	4404290106	GHIERA SCARICO ESTERNA	14	4404180108	GUARNIZIONE PIANA FILTRO
7	4404290107	VALVOLA DI SICUREZZA	15	4404040108	SFIATO ARIA
8*	4404040103	RACCORDO 1 1/2" + O-RIN "	16*	4404040115	O-RING D 60X8
8*	4404040112	RACCORDO USCITA 2" + O-RING	16*	4404040211	O-RING D 70X5
8*	4404290108	RACCORDO USCITA 2 1/2" + O-RIN "	17	4404010103	MANOMETRO 1/8" 3 KG./C "
9*	4404300917	CANDELOTTO COLLECTORE 1" 110 M "	18*	4404010168	RACCORDO DIFFUSORE D. 500
9*	4404300915	CANDELOTTO COLLECTORE 1" 175 M "	18*	4404010169	RACCORDO DIFFUSORE D. 600
9*	4404300916	CANDELOTTO COLLECTORE 1" 225 M "	18*	4404010170	RACCORDO DIFFUSORE D. 750

*** -> SI FACCIA RIFERIMENTO AL FOGLIO DELLE OSSERVAZIONI**

CODICE **36596, 36597, 36598, 36599**

DESCRIZIONE: **FILTRO ATLAS**

9	* 4404290109	CANDELOTTO 1" 265 M/M "	18	* 4404010171	RACCORDO DIFFUSORE D. 900
19	* 4404010172	KIT COLLETTORE D. 500	21	* 4404010180	TAPPO PER RIEMPIMENTO 1 1/2"
19	* 4404010173	KIT COLLETTORE D. 600	21	* 4404010181	TAPPO PER RIEMPIMENTO 2" - 2 1/2"
19	* 4404010174	KIT COLLETTORE D. 750	22	* 4404010025	GRUPPO CANDELOTTO COLLECTORE D. 400
19	* 4404010175	KIT COLLETTORE D. 900	22	* 4404010026	GRUPPO CANDELOTTO COLLECTORE D. 500
20	* 4404010176	BASE FILTRO D. 500	22	* 4404010028	GRUPPO CANDELOTTO COLLECTORE D. 650
20	* 4404010177	BASE FILTRO D. 600	22	* 4404010048	GRUPPO CANDELOTTO COLLECTORE D. 750
20	* 4404010178	BASE FILTRO D. 750	23	4404301003	SPURGO ARIA + TUBO L=670
20	* 4404010179	BASE FILTRO D. 900	24	4404190319	BULLONERIA PER CHISURA COPERCHIO

CODICE **36596, 36597, 36598, 36599**

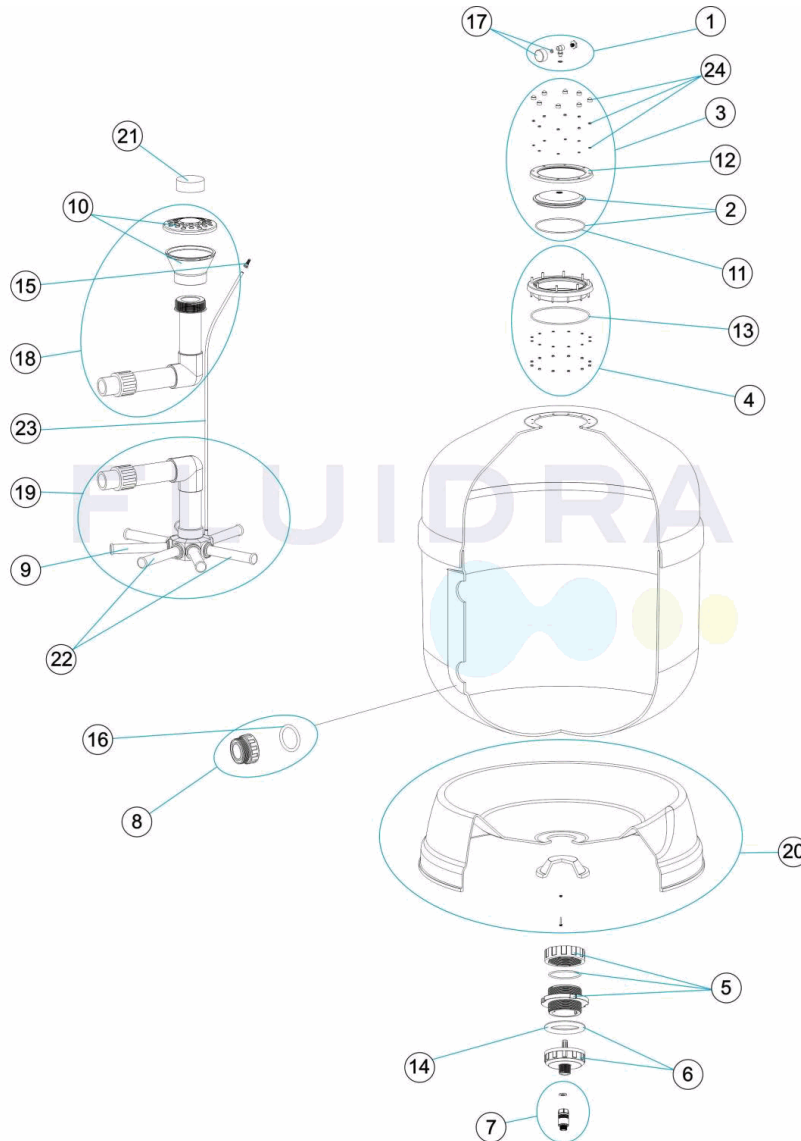
DESCRIZIONE: **FILTRO ATLAS**

OSSERVAZIONI

POS	CODICE	OSSERVAZIONI
8	4404040103	PER: 36596, 36597
8	4404040112	PER: 36598
8	4404290108	PER: 36599
9	4404300917	PER: 36596 [4UT]
9	4404300915	PER: 36597 [4UT]
9	4404300916	PER: 36598 [6UT]
9	4404290109	PER: 36599 [6UT]
10	4404290110	PER: 36596, 36597
10	4404290111	PER: 36598, 36599
16	4404040115	PER: 36596, 36597, 36598
16	4404040211	PER: 36599
18	4404010168	PER: 36596
18	4404010169	PER: 36597
18	4404010170	PER: 36598
18	4404010171	PER: 36599
19	4404010172	PER: 36596
19	4404010173	PER: 36597
19	4404010174	PER: 36598
19	4404010175	PER: 36599
20	4404010176	PER: 36596
20	4404010177	PER: 36597
20	4404010178	PER: 36598
20	4404010179	PER: 36599
21	4404010180	PER: 36596, 36597
21	4404010181	PER: 36598, 36599
22	4404010025	PER: 36596
22	4404010026	PER: 36597
22	4404010028	PER: 36598
22	4404010048	PER: 36599

CODE **36596, 36597, 36598, 36599**

BESCHREIBUNG: **FILTER ATLAS**



DEUTSCH

POS	CODE	BESCHREIBUNG	POS	CODE	BESCHREIBUNG
1	4404080104	MANOMETER KOMPLETT	10	* 4404290110	KOPF WASSERVERTEILER 1 1/2"
2	4404190303	ABDECKUNG TRANSPARENT D. 220 UND DICHTUNG	10	* 4404290111	KOPF WASSERVERTEILER 2" - 2 1/2"
3	4404190325	GRUPPE ABDECKUNG TRANSPARENT	11	4404260106	DICHTUNG FIXIERRING VENTIL
4	4404160809	FILTRERING 20 SCHRAUBEN	12	4404160849	FIXIERRING ABDECKUNG
5	4404290105	SCHRAUBTEIL DOPPELGEWINDE AUSLASS 2 1/2" IT	13	4404020116	O-RING 255 X 4
6	4404290106	MUTTER AUSLASS AUSSEN	14	4404180108	FLACHDICHTUNG FILTER
7	4404290107	SICHERHEITSVENTIL	15	4404040108	ENTLÜFTUNG
8*	4404040103	GEWINDESTÜCK 1 1/2" UND O-RIN "	16*	4404040115	O-RING D. 60 X 8
8*	4404040112	GEWINDESTÜCK AUSGANG 2" UND O-RIN "	16*	4404040211	O-RING D. 70 X 5
8*	4404290108	GEWINDESTÜCK AUSGANG 2 1/2" UND O-RIN "	17	4404010103	MANOMETER 1/8" 3 KG/C "
9*	4404300917	FILTERSTERN-SCHLITZROHR 1" 110 M "	18*	4404010168	SET WASSERVERTEILER D. 500
9*	4404300915	FILTERSTERN-SCHLITZROHR 1" 175 M "	18*	4404010169	SET WASSERVERTEILER D. 600
9*	4404300916	FILTERSTERN-SCHLITZROHR 1" 225 M "	18*	4404010170	SET WASSERVERTEILER D. 750

*** -> SIEHE ANMERKUNGSBLATT**

CODE **36596, 36597, 36598, 36599**

BESCHREIBUNG: **FILTER ATLAS**

9	* 4404290109	FILTERSTERN-SCHLITZROHR 1" 265 M "	18	* 4404010171	SET WASSERVERTEILER D. 900
19	* 4404010172	SAMMELROHRSET D. 500	21	* 4404010180	STOPFEN FÜR SANDFÜLLUNG 1 1/2"
19	* 4404010173	SAMMELROHRSET D. 600	21	* 4404010181	STOPFEN FÜR SANDFÜLLUNG 2 - 2 1/2"
19	* 4404010174	SAMMELROHRSET D. 750	22	* 4404010025	SET FILTERSTERN-SCHLITZROHR D. 400
19	* 4404010175	SAMMELROHRSET D. 900	22	* 4404010026	SET FILTERSTERN-SCHLITZROHR D. 500
20	* 4404010176	FILTERFUSS D. 500	22	* 4404010028	SET FILTERSTERN-SCHLITZROHR D. 650
20	* 4404010177	FILTERFUSS D. 600	22	* 4404010048	SET FILTERSTERN-SCHLITZROHR D. 750
20	* 4404010178	FILTERFUSS D. 750	23	4404301003	ENTLÜFTUNG UND ROHR L=670
20	* 4404010179	FILTERFUSS D. 900	24	4404190319	SCHRAUBENSATZ SCHLIESSVORRICHTUNG ABDE

CODE **36596, 36597, 36598, 36599**

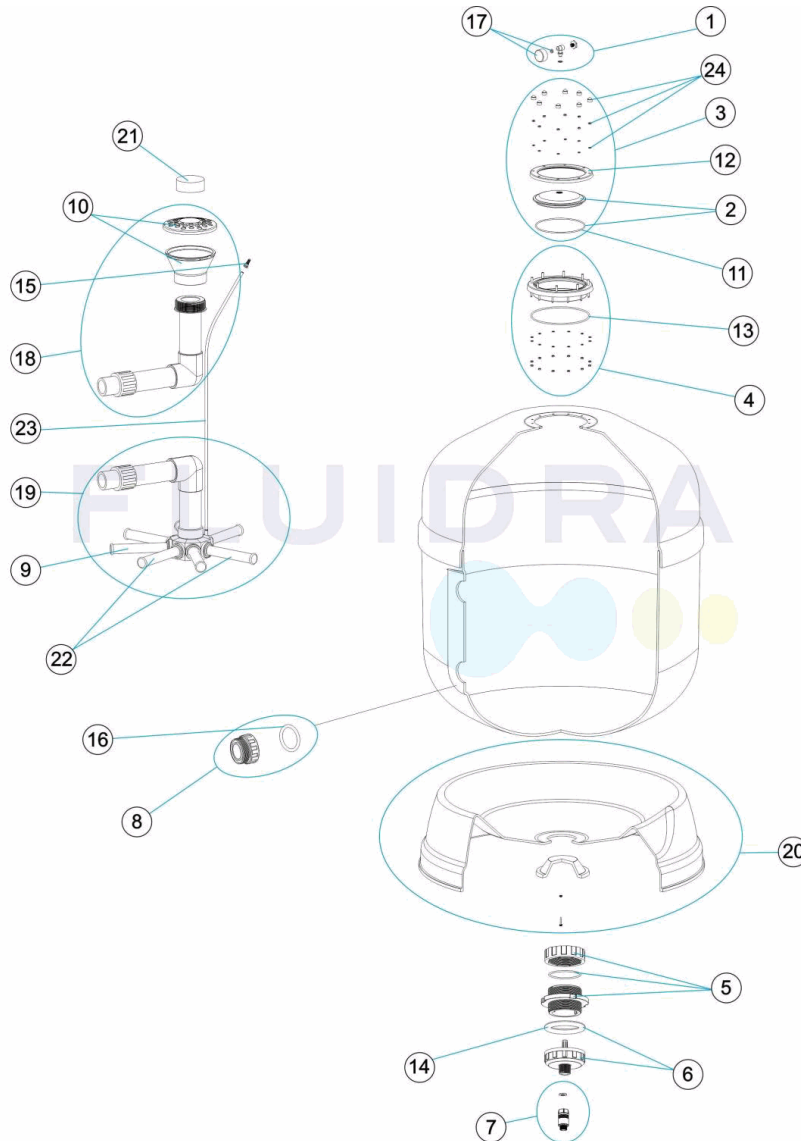
BESCHREIBUNG: **FILTER ATLAS**

HINWEISE

POS	CODE	HINWEISE
8	4404040103	FÜR: 36596, 36597
8	4404040112	FÜR: 36598
8	4404290108	FÜR: 36599
9	4404300917	FÜR: 36596 [4UT]
9	4404300915	FÜR: 36597 [4UT]
9	4404300916	FÜR: 36598 [6UT]
9	4404290109	FÜR: 36599 [6UT]
10	4404290110	FÜR: 36596, 36597
10	4404290111	FÜR: 36598, 36599
16	4404040115	FÜR: 36596, 36597, 36598
16	4404040211	FÜR: 36599
18	4404010168	FÜR: 36596
18	4404010169	FÜR: 36597
18	4404010170	FÜR: 36598
18	4404010171	FÜR: 36599
19	4404010172	FÜR: 36596
19	4404010173	FÜR: 36597
19	4404010174	FÜR: 36598
19	4404010175	FÜR: 36599
20	4404010176	FÜR: 36596
20	4404010177	FÜR: 36597
20	4404010178	FÜR: 36598
20	4404010179	FÜR: 36599
21	4404010180	FÜR: 36596, 36597
21	4404010181	FÜR: 36598, 36599
22	4404010025	FÜR: 36596
22	4404010026	FÜR: 36597
22	4404010028	FÜR: 36598
22	4404010048	FÜR: 36599

CODIGO **36596, 36597, 36598, 36599**

DESCRIÇÃO: **FILTRO ATLAS**



PORTUGUES

POS	CODIGO	DESCRIÇÃO	POS	CODIGO	DESCRIÇÃO
1	4404080104	MANÔMETRO COMPLETO	10	* 4404290110	DIFUSOR 1 1/2"
2	4404190303	TAMPA TRANSPARENTE D.220 + JUNTA	10	* 4404290111	DIFUSOR 2
3	4404190325	CONJUNTO TAMPA TRANSPARENTE	11	4404260106	JUNTA ARO FIXAÇÃO VALVULA TOP
4	4404160809	ARO PESCOCOÇO 20 PARAFUSOS	12	4404160849	ARO FIXAÇÃO TAMPA
5	4404290105	DUPLA ROSCA DE DESCARGA 2 1/2" INTERIO "	13	4404020116	JUNTA TÓRICA 255X4
6	4404290106	PORCA DESCARGA EXTERIOR	14	4404180108	JUNTA PLANA FILTRO
7	4404290107	VÁLVULA DE SEGURANÇA	15	4404040108	PURGA AREIA
8*	4404040103	RACORD 1 1/2" JUNTA TORIC "	16*	4404040115	JUNTA TÓRICA D 60X8
8*	4404040112	ACOPLADOR SAÍDA 2" + JUNTA TORIC "	16*	4404040211	JUNTA TÓRICA D 70X5
8*	4404290108	RACORD DE SAÍDA 2 1/2" + JUNTA TÓRIC "	17	4404010103	MANOMETRO 1/8" 3 KG./C "
9*	4404300917	BRAÇO COLECTOR 1" 110 M "	18*	4404010168	CJTO. DIFUSOR D. 500
9*	4404300915	BRAÇO COLECTOR 1" 175 M "	18*	4404010169	CJTO. DIFUSOR D. 600
9*	4404300916	BRAÇO COLECTOR 1" 225 M "	18*	4404010170	CJTO. DIFUSOR D. 750

*** -> VEJA A FICHA DE OBSERVAÇÕES**

CODIGO **36596, 36597, 36598, 36599**

DESCRIÇÃO: **FILTRO ATLAS**

9	* 4404290109	BRAÇO COLECTOR 1" 265 M/M "	18	* 4404010171	CJTO. DIFUSOR D. 900
19	* 4404010172	CJTO. COLECTOR D. 500	21	* 4404010180	TAMPÃO PARA ENCHIMENTO 1 1/2"
19	* 4404010173	CJTO. COLECTOR D. 600	21	* 4404010181	TAMPÃO PARA ENCHIMENTO 2" - 2 1/2"
19	* 4404010174	CJTO. COLECTOR D. 750	22	* 4404010025	CJTO. BRAÇO COLECTOR D. 400
19	* 4404010175	CJTO. COLECTOR D. 900	22	* 4404010026	CJTO. BRAÇO COLECTOR D. 500
20	* 4404010176	PÉ FILTRO D. 500	22	* 4404010028	CJTO. BRAÇO COLECTOR D.650
20	* 4404010177	PÉ FILTRO D. 600	22	* 4404010048	CJTO. BRAÇO COLECTOR D. 750
20	* 4404010178	PÉ FILTRO D. 750	23	4404301003	PURGA AR + TUBO L=670
20	* 4404010179	PÉ FILTRO D. 900	24	4404190319	PARAFUSOS FECHO TAMPA

CODIGO 36596, 36597, 36598, 36599

DESCRIÇÃO: FILTRO ATLAS

OBSERVAÇÕES

POS	CODIGO	OBSERVAÇÕES
8	4404040103	PARA: 36596, 36597
8	4404040112	PARA: 36598
8	4404290108	PARA: 36599
9	4404300917	PARA: 36596 [4UT]
9	4404300915	PARA: 36597 [4UT]
9	4404300916	PARA: 36598 [6UT]
9	4404290109	PARA: 36599 [6UT]
10	4404290110	PARA: 36596, 36597
10	4404290111	PARA: 36598, 36599
16	4404040115	PARA: 36596, 36597, 36598
16	4404040211	PARA: 36599
18	4404010168	PARA: 36596
18	4404010169	PARA: 36597
18	4404010170	PARA: 36598
18	4404010171	PARA: 36599
19	4404010172	PARA: 36596
19	4404010173	PARA: 36597
19	4404010174	PARA: 36598
19	4404010175	PARA: 36599
20	4404010176	PARA: 36596
20	4404010177	PARA: 36597
20	4404010178	PARA: 36598
20	4404010179	PARA: 36599
21	4404010180	PARA: 36596, 36597
21	4404010181	PARA: 36598, 36599
22	4404010025	PARA: 36596
22	4404010026	PARA: 36597
22	4404010028	PARA: 36598
22	4404010048	PARA: 36599