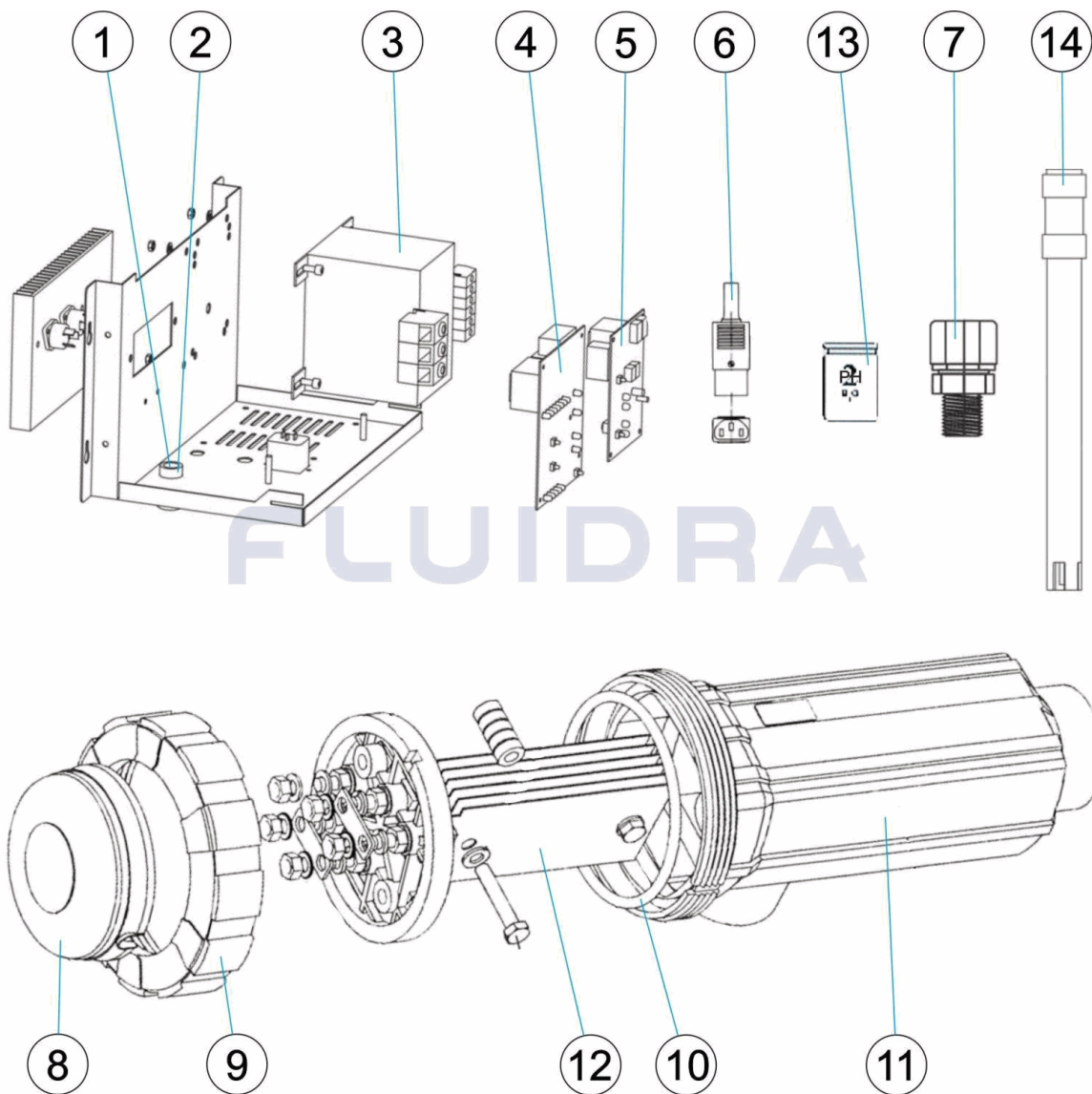


CODIGO **38455, 38456, 38457**

 DESCRIPCION: **SISTEMA ELECTROLISIS SALINA PH GAMA PRIVADA**

**ESPAÑOL**

POS	CODIGO	DESCRIPCION	CANTIDAD	POS	CODIGO	DESCRIPCION	CANTIDAD
1	* 4408040520	FUSIBLE 5X20 2A		7	4408040604	PORTAELECTRODOS PE 12M/M-1/2"	
1	* 4408040521	FUSIBLE 5X20 3A		8	4408040509	PROTECTOR CONTACTOS	
1	* 4408040522	FUSIBLE 5X20 4A		9	4408040508	TUERCA CIERRE CELULA	
2	4408040523	PORTAFUSIBLE 5X20 CHASIS		10	4408040510	JUNTA VASO EPDM.	
3	* 4408040511	TRANSFORMADOR MODELO A-10		11	57655	CELULA PORTA ELECTRODOS	
3	* 4408040512	TRANSFORMADOR MODELO A-18		12	* CLEL011	ELECTRODO AUTOLIMPIANTE A-10, A-10P	
3	* 4408040513	TRANSFORMADOR MODELO A-25		12	* CLEL019	ELECTRODO AUTOLIMPIANTE A-18, A-18P	
4	* 4408040362	PBA CONTROL A-10		12	* CLEL025	ELECTRODO AUTOLIMPIANTE A-25, A-25P	
4	* 4408040304	PBA CONTROL A-18		13	60632	TAMPON PH 4,0 50 ML. (ROJO)	
4	* 4408040361	PBA CONTROL A-25		13	60618	TAMPON PH 7,0 50 M/L. (VERDE)	
5	4408040602	PLACA CONTROL PH		14	60648	ELECTRODO COMBINADO PH	
6	4408040524	CONECTOR CEE22 PARA BOMBA DOSIFICA					

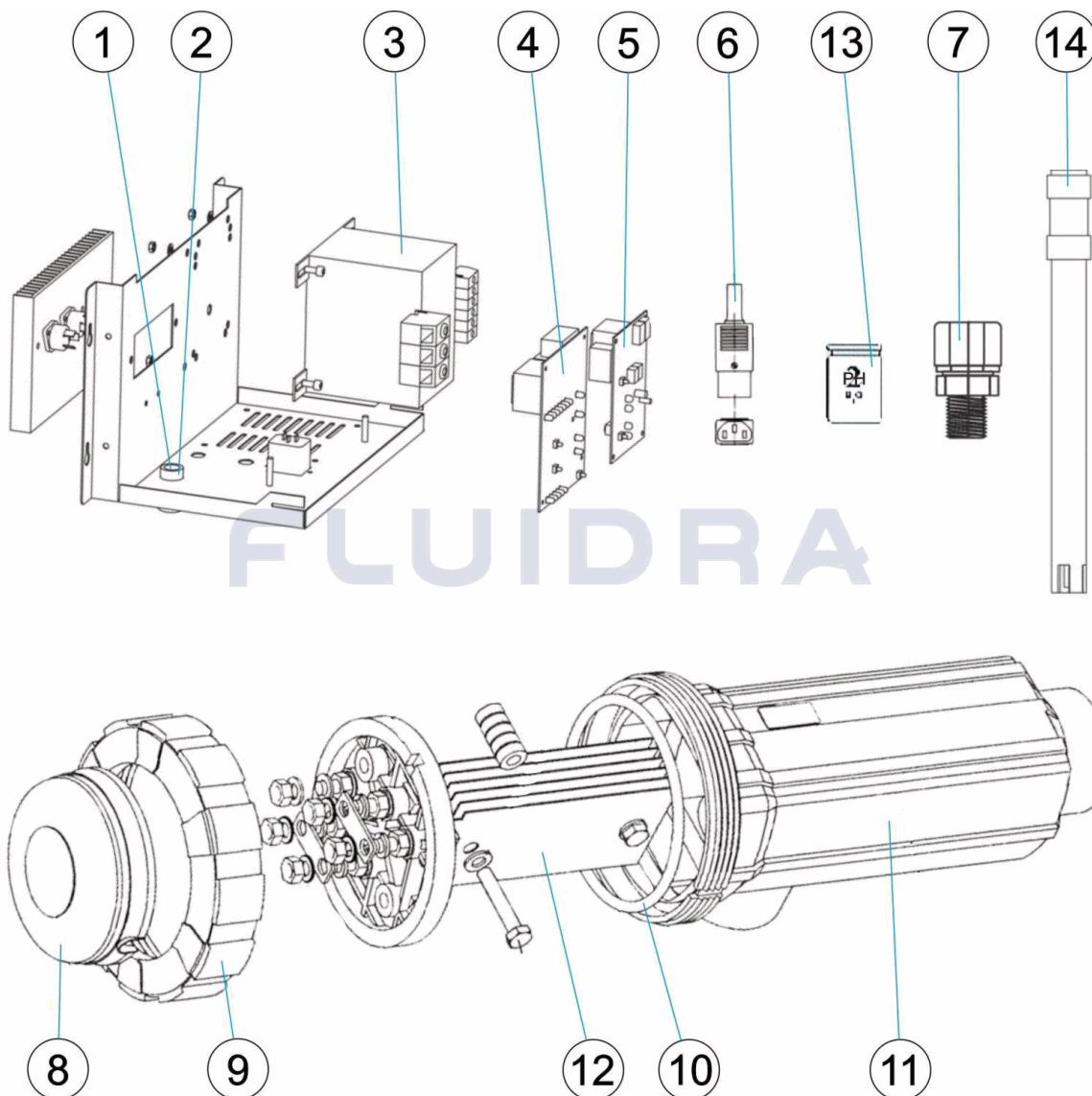
CODIGO **38455, 38456, 38457**

DESCRIPCION: **SISTEMA ELECTROLISIS SALINA PH GAMA PRIVADA**

## OBSERVACIONES

POS	CODIGO	OBSERVACIONES
1	4408040520	PARA: 38455
1	4408040521	PARA: 38456
1	4408040522	PARA: 38457
3	4408040511	PARA: 38455
3	4408040512	PARA: 38456
3	4408040513	PARA: 38457
4	4408040362	PARA: 38455
4	4408040304	PARA: 38456
4	4408040361	PARA: 38457
12	CLEL011	PARA: 38455
12	CLEL019	PARA: 38456
12	CLEL025	PARA: 38457

CODE **38455, 38456, 38457**

 DESCRIPTION: **SYSTÈME ÉLECTROLYSE SALINE PH GAMME PRIVÉE**

**FRANCAIS**

POS	CODE	DESCRIPTION	QUANTITE	POS	CODE	DESCRIPTION	QUANTITE
1	* 4408040520	FUSIBLE 5X20 2A		7	4408040604	PORTE-ÉLECTRODE PE 12M/M. 1/2"	
1	* 4408040521	FUSIBLE 5X20 3A		8	4408040509	PROTECTEUR CONTACTS	
1	* 4408040522	FUSIBLE 5X20 4A		9	4408040508	ECRU FERMETURE CELLULE	
2	4408040523	PORTE-FUSIBLES 5X20 CHASSIS		10	4408040510	JOINT VASE EPDM	
3	* 4408040511	TRANSFORMATEUR MODÈLE A-10		11	57655	CELLULE PORTE-ÉLECTRODE	
3	* 4408040512	TRANSFORMATEUR MODÈLE A-18		12	* CLEL011	ELECTRODE AUTO-NETTOYANTE A-10, A-	
3	* 4408040513	TRANSFORMATEUR MODÈLE A-25		12	* CLEL019	ELECTRODE AUTO-NETTOYANTE A-18, A-	
4	* 4408040362	PBA CONTRÔLE A-10		12	* CLEL025	ELECTRODE AUTO-NETTOYANTE A-25, A-	
4	* 4408040304	PBA CONTRÔLE A-18		13	60632	TAMPON PH 4,0 50 ML. (ROUGE)	
4	* 4408040361	PBA CONTRÔLE A-25		13	60618	TAMPON PH 7,0 50 M/L. (VERT)	
5	4408040602	PLAQUE CONTRÔLE PH		14	60648	ELECTRODE COMBINÉE PH	
6	4408040524	CONNECTEUR CEE22 POUR POMPE DOSEU					

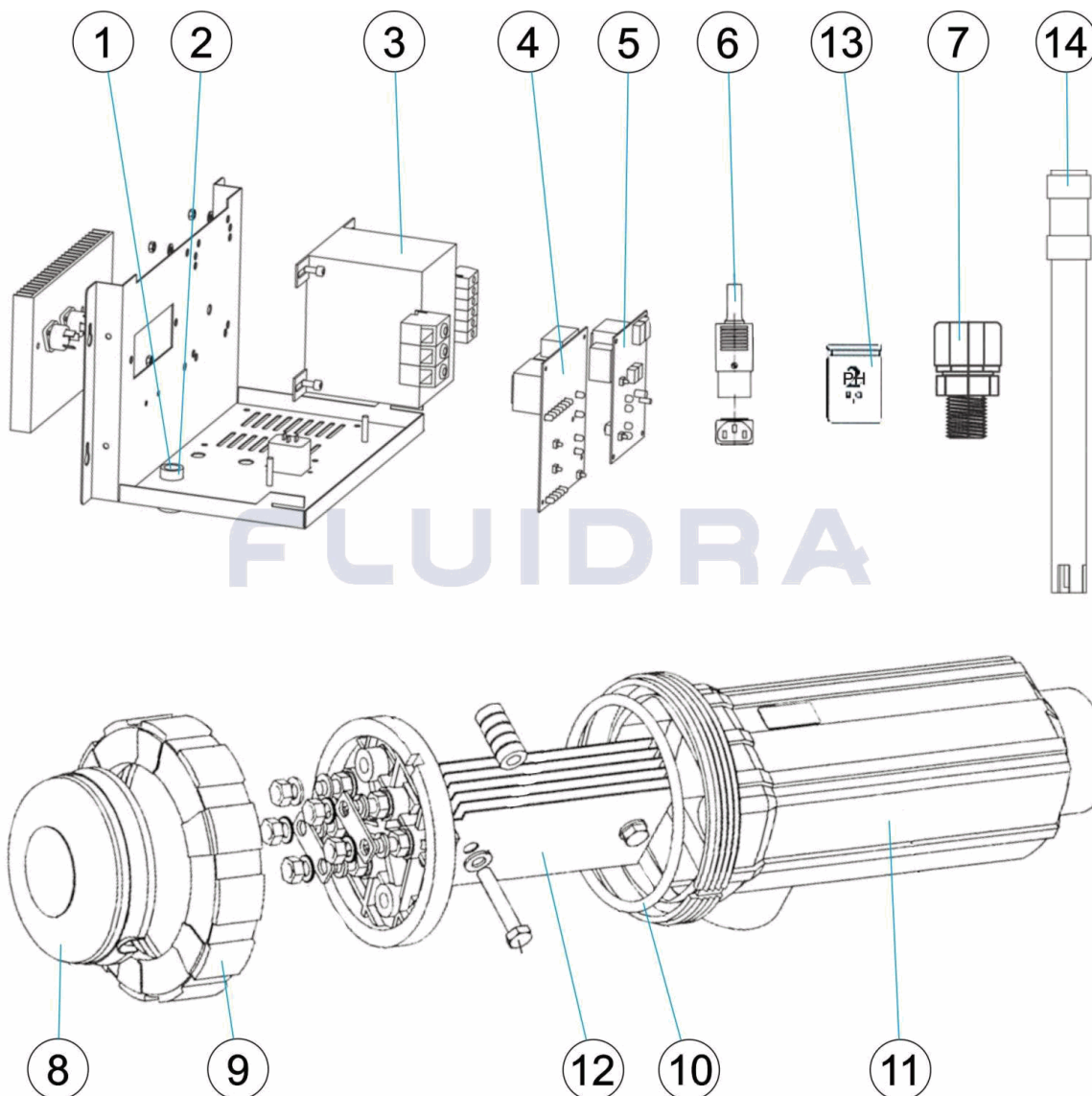
CODE **38455, 38456, 38457**

DESCRIPTION: **SYSTÈME ÉLECTROLYSE SALINE PH GAMME PRIVÉE**

## OBSERVATIONS

POS	CODE	OBSERVATIONS
1	4408040520	POUR: 38455
1	4408040521	POUR: 38456
1	4408040522	POUR: 38457
3	4408040511	POUR: 38455
3	4408040512	POUR: 38456
3	4408040513	POUR: 38457
4	4408040362	POUR: 38455
4	4408040304	POUR: 38456
4	4408040361	POUR: 38457
12	CLEL011	POUR: 38455
12	CLEL019	POUR: 38456
12	CLEL025	POUR: 38457

CODE **38455, 38456, 38457**

 DESCRIPTION: **SALINE ELECTROLYSIS SYSTEM PH PRIVATE RANGE**


## ENGLISH

POS	CODE	DESCRIPTION	QUANTITY	POS	CODE	DESCRIPTION	QUANTITY
1	* 4408040520	FUSE 5X20 2A		7	4408040604	ELECTRODE CARRIER PE 12M/M.-1/2"	
1	* 4408040521	FUSE 5X20 3A		8	4408040509	CONTAC PROTECTION	
1	* 4408040522	FUSE 5X20 4A		9	4408040508	CLOSINGNUT FOR CELL	
2	4408040523	FUSE HOLDER 5X20		10	4408040510	GASKET EPDM FÜR ZELLE	
3	* 4408040511	POWER TRANSFORMER A-10		11	57655	ELECTRODE CELL	
3	* 4408040512	POWER TRANSFORMER A-18		12	* CLEL011	ELECTRODE A-10, A-10PH	
3	* 4408040513	POWER TRANSFORMER A-25		12	* CLEL019	ELECTRODE A-18, A-18PH	
4	* 4408040362	PBA CONTROL A-10		12	* CLEL025	ELECTRODE A-25, A-25PH	
4	* 4408040304	PBA CONTROL A-18		13	60632	CALIBRATION SOLUTION PH 4,0 50 ML. (R)	
4	* 4408040361	PBA CONTROL A-25		13	60618	CALIBRATION SOLUTION PH 7,0 50 M/L. (C)	
5	4408040602	ELECTRONIC CARD PH		14	60648	ELECTRODE PH	
6	4408040524	CEE22 CONNECTOR PUMP					

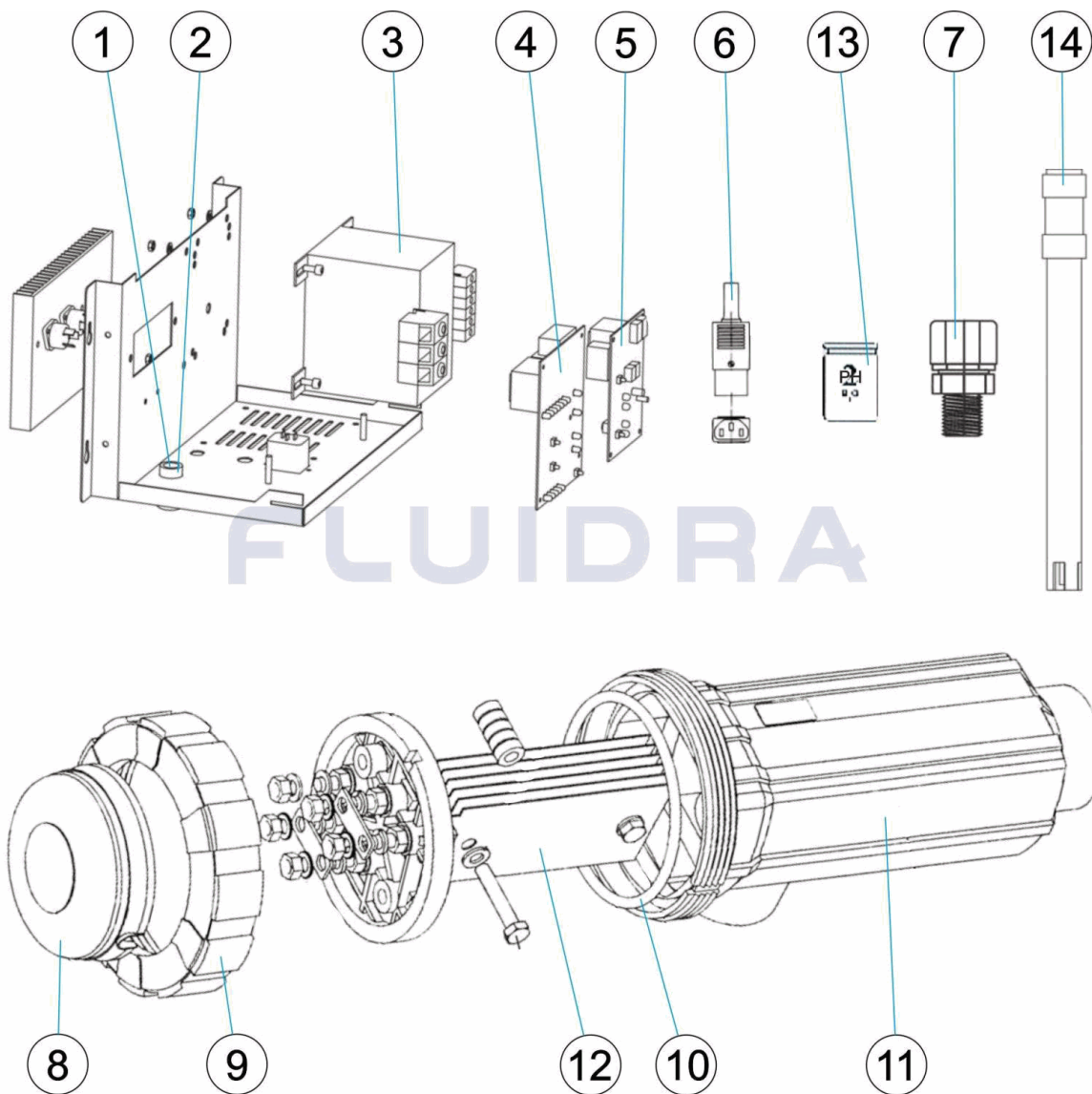
CODE **38455, 38456, 38457**

DESCRIPTION: **SALINE ELECTROLYSIS SYSTEM PH PRIVATE RANGE**

## OBSERVATIONS

POS	CODE	OBSERVATIONS
1	4408040520	FOR: 38455
1	4408040521	FOR: 38456
1	4408040522	FOR: 38457
3	4408040511	FOR: 38455
3	4408040512	FOR: 38456
3	4408040513	FOR: 38457
4	4408040362	FOR: 38455
4	4408040304	FOR: 38456
4	4408040361	FOR: 38457
12	CLEL011	FOR: 38455
12	CLEL019	FOR: 38456
12	CLEL025	FOR: 38457

CODICE **38455, 38456, 38457**

 DESCRIZIONE: **SISTEMA ELECTROLISI SALINA PH GAMMA PRIVATA**

**ITALIANO**

POS	CODICE	DESCRIZIONE	QUANTITA'	POS	CODICE	DESCRIZIONE	QUANTITA'
1	* 4408040520	FUSIBILE 5X20 2A		7	4408040604	PORTAELETTODO PE 12M/M. X 1/2"	
1	* 4408040521	FUSIBILE 5X20 3A		8	4408040509	PROTECTORE CONTATTI	
1	* 4408040522	FUSIBILE 5X20 4A		9	4408040508	GHIERA CHIUSURA CELLA	
2	4408040523	PORTAFUSIBILI 5X20 CORPO		10	4408040510	GUARNICIONE COPERCHIO CELLA	
3	* 4408040511	TRANSFORMATORE A-10		11	57655	CELLA PORTAELETTRODI	
3	* 4408040512	TRANSFORMATORE A-18		12	* CLEL011	ELETTRODO A-10, A-10PH	
3	* 4408040513	TRANSFORMATORE A-25		12	* CLEL019	ELETTRODO A-18, A-18PH	
4	* 4408040362	PBA A-10		12	* CLEL025	ELETTRODO A-25, A-25PH	
4	* 4408040304	PBA A-18		13	60632	SOLUCIONE TAMPONE PH 4,0 50 ML. (RO)	
4	* 4408040361	PBA A-25		13	60618	SOLUCIONE TAMPONE PH 7,0 50 M/L. (VEI)	
5	4408040602	SCHEDA PH		14	60648	ELETTRODO COMBINATO PH	
6	4408040524	CONNETTORE CEE22 POMPA DOSATRICE					

\* SI FACCIA RIFERIMENTO AL FOGLIO DELLE OSSERVAZIONI

CODICE **38455, 38456, 38457**

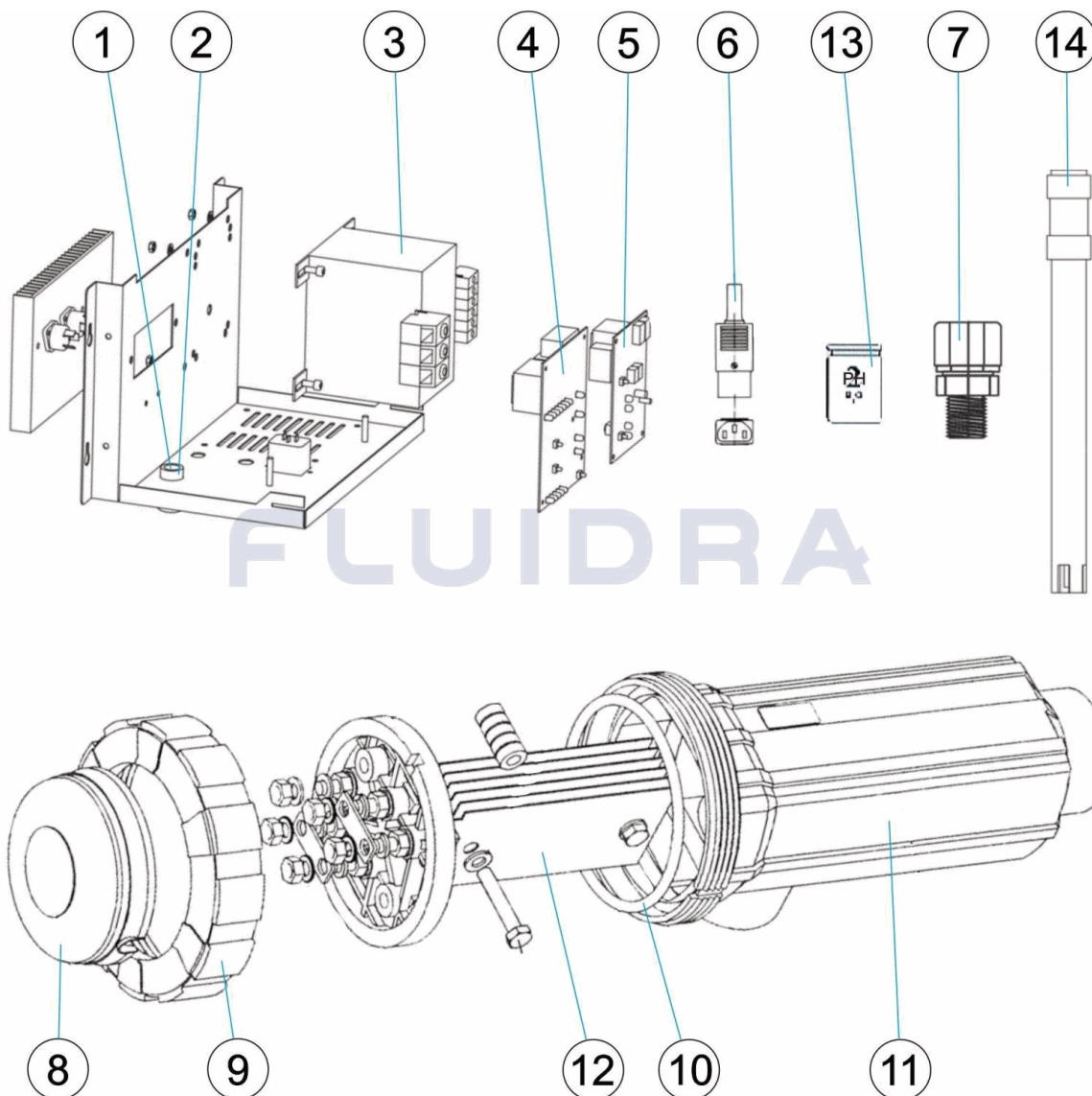
 DESCRIZIONE: **SISTEMA ELECTROLISI SALINA PH GAMMA PRIVATA**

## OSSERVAZIONI

POS	CODICE	OSSERVAZIONI
1	4408040520	PER: 38455
1	4408040521	PER: 38456
1	4408040522	PER: 38457
3	4408040511	PER: 38455
3	4408040512	PER: 38456
3	4408040513	PER: 38457
4	4408040362	PER: 38455
4	4408040304	PER: 38456
4	4408040361	PER: 38457
12	CLEL011	PER: 38455
12	CLEL019	PER: 38456
12	CLEL025	PER: 38457



CODE **38455, 38456, 38457**

 BESCHREIBUNG: **ELEKTROLYTSYSTEM SALZ PH PRIVATGEBRAUCH**

**DEUTSCH**

POS	CODE	BESCHREIBUNG	MENGE	POS	CODE	BESCHREIBUNG	MENGE
1	* 4408040520	SICHERUNG 5 X 20 2 A		7	4408040604	ELEKTRODENSITZ PE 12 MM-1/2"	
1	* 4408040521	SICHERUNG 5 X 20 3 A		8	4408040509	KONTAKTSCHUTZ	
1	* 4408040522	SICHERUNG 5 X 20 4 A		9	4408040508	MUTTER SCHLIESSVORRICHTUNG ZELLE	
2	4408040523	SICHERUNGSSITZ 5 X 20 RAHMEN		10	4408040510	DICHTUNG GEHÄUSE EPDM.	
3	* 4408040511	TRAFO MODELL A-10		11	57655	ELEKTRODENZELLE	
3	* 4408040512	TRAFO MODELL A-18		12	* CLEL011	ELEKTRODE SELBSTREINIGEND A-10, A-1	
3	* 4408040513	TRAFO MODELL A-25		12	* CLEL019	ELEKTRODE SELBSTREINIGEND A-18, A-1	
4	* 4408040362	PBA STEUERUNG A-10		12	* CLEL025	ELEKTRODE SELBSTREINIGEND A-25, A-2	
4	* 4408040304	PBA STEUERUNG A-18		13	60632	PUFFER PH 4,0 50 ML (ROT)	
4	* 4408040361	PBA STEUERUNG A-25		13	60618	PUFFER PH 7,0 50 M/L (GRÜN)	
5	4408040602	STEUERPLATINE PH		14	60648	ELEKTRODE KOMBINIERT PH	
6	4408040524	STECKKUPPLUNG CEE22 FÜR DOSIERPUMF					

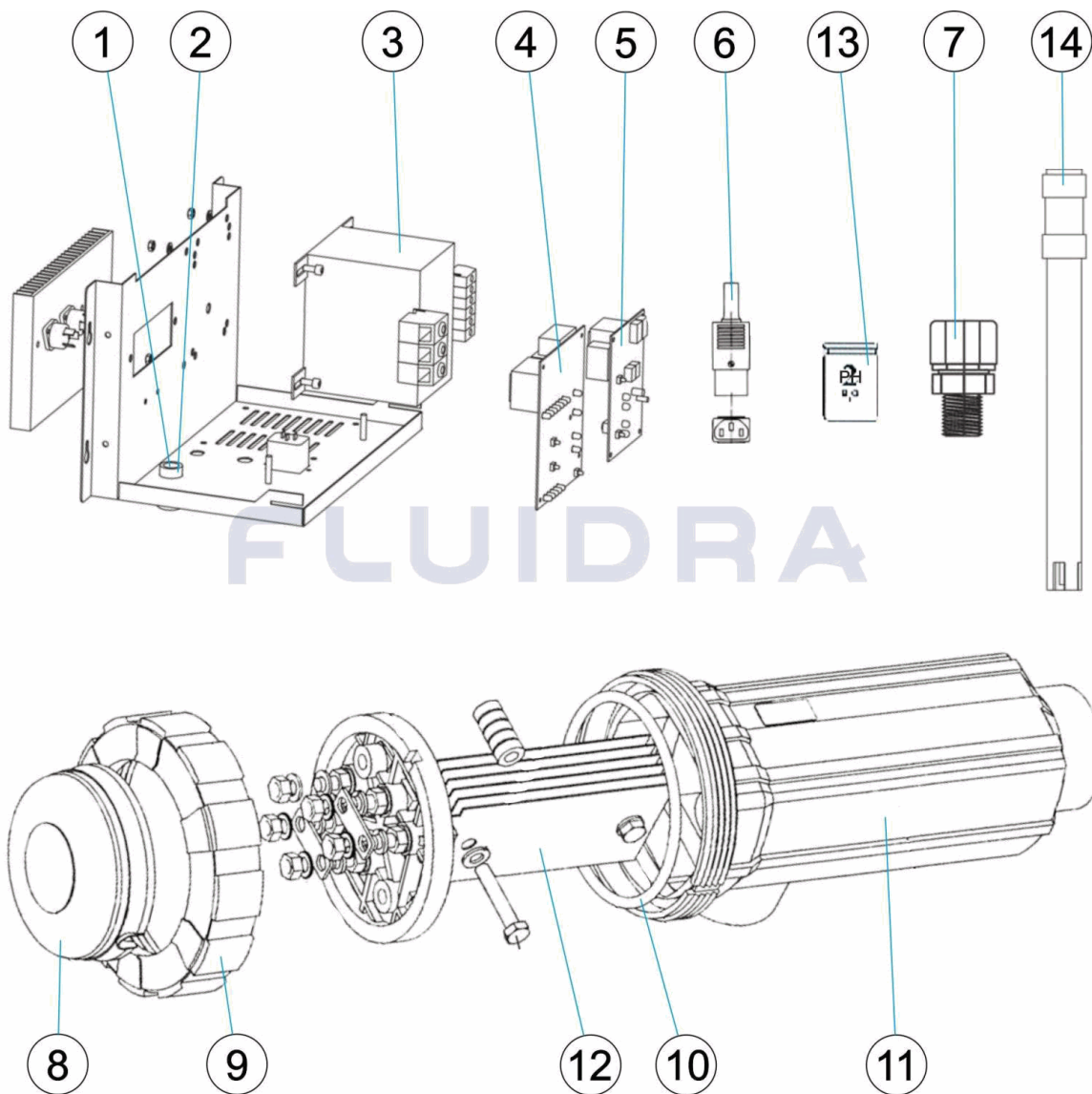
CODE **38455, 38456, 38457**

BESCHREIBUNG: **ELEKTROLYTSYSTEM SALZ PH PRIVATGEBRAUCH**

## HINWEISE

POS	CODE	HINWEISE
1	4408040520	FÜR: 38455
1	4408040521	FÜR: 38456
1	4408040522	FÜR: 38457
3	4408040511	FÜR: 38455
3	4408040512	FÜR: 38456
3	4408040513	FÜR: 38457
4	4408040362	FÜR: 38455
4	4408040304	FÜR: 38456
4	4408040361	FÜR: 38457
12	CLEL011	FÜR: 38455
12	CLEL019	FÜR: 38456
12	CLEL025	FÜR: 38457

CODIGO **38455, 38456, 38457**

 DESCRIÇÃO: **SISTEMA ELECTRÓLISE SALINA PH GAMA PRIVADA**

**PORTUGUES**

POS	CODIGO	DESCRIÇÃO	QUANTIDADE	POS	CODIGO	DESCRIÇÃO	QUANTIDADE
1	* 4408040520	FUSÍVEL 5X20 2A		7	4408040604	PORTAELECTRODOS PE 12M/M-1/2"	
1	* 4408040521	FUSÍVEL 5X20 3A		8	4408040509	PROTECTOR CONTACTOS	
1	* 4408040522	FUSÍVEL 5X20 4A		9	4408040508	TAMPA ROSCADA DE FECHO DA VASO	
2	4408040523	PORTAFUSIVEIS 5X20 CHASIS		10	4408040510	JUNTA EPDM COPO	
3	* 4408040511	TRANSFORMADOR MODELO A-10		11	57655	VASO PORTA-ELECTRODOS	
3	* 4408040512	TRANSFORMADOR MODELO A-18		12	* CLEL011	ELECTRODO AUTO-LIMPANT. A-10, A-10P	
3	* 4408040513	TRANSFORMADOR MODELO A-25		12	* CLEL019	ELECTRODO AUTO-LIMPANT. A-18, A-18P	
4	* 4408040362	PBA CONTROL A-10		12	* CLEL025	ELECTRODO AUTO-LIMPANT. A-25, A-25Pi	
4	* 4408040304	PBA CONTROL A-18 CK		13	60632	SOLUÇÃO TAMPÃO PH 4,0 50 ML. (VERME	
4	* 4408040361	PBA CONTROL A-25		13	60618	SOLUÇÃO TAMPÃO PH 7,0 50 M/L. (VERDE	
5	4408040602	PLACA CONTROLO PH		14	60648	ELECTRODO COMBINADO PH	
6	4408040524	CONECTOR CEE 22 PARA BOMBA DOSIFICA					

CODIGO **38455, 38456, 38457**

DESCRIÇÃO: **SISTEMA ELECTRÓLISE SALINA PH GAMA PRIVADA**

## OBSERVACÕES

POS	CODIGO	OBSERVACÕES
1	4408040520	PARA: 38455
1	4408040521	PARA: 38456
1	4408040522	PARA: 38457
3	4408040511	PARA: 38455
3	4408040512	PARA: 38456
3	4408040513	PARA: 38457
4	4408040362	PARA: 38455
4	4408040304	PARA: 38456
4	4408040361	PARA: 38457
12	CLEL011	PARA: 38455
12	CLEL019	PARA: 38456
12	CLEL025	PARA: 38457