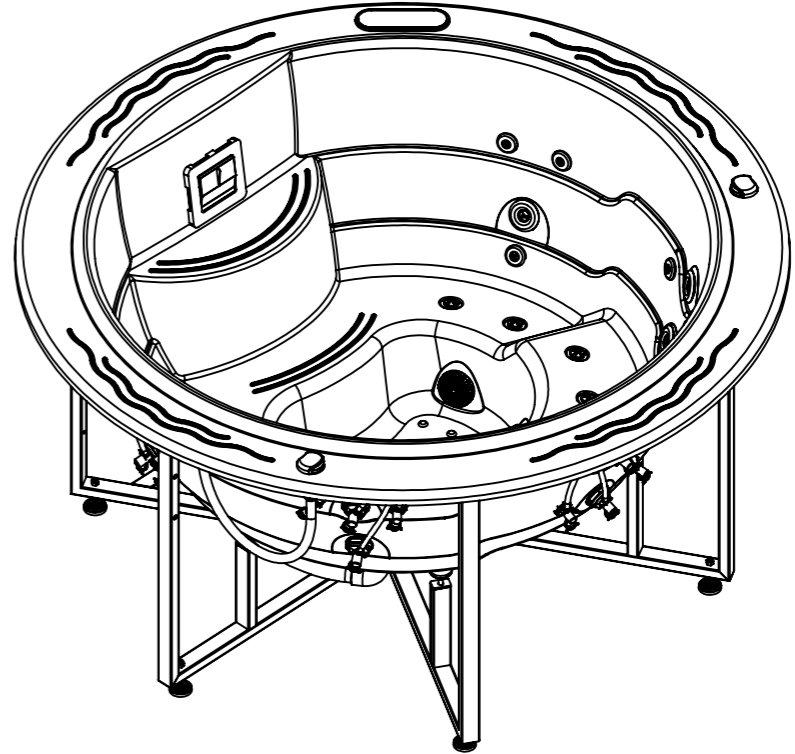
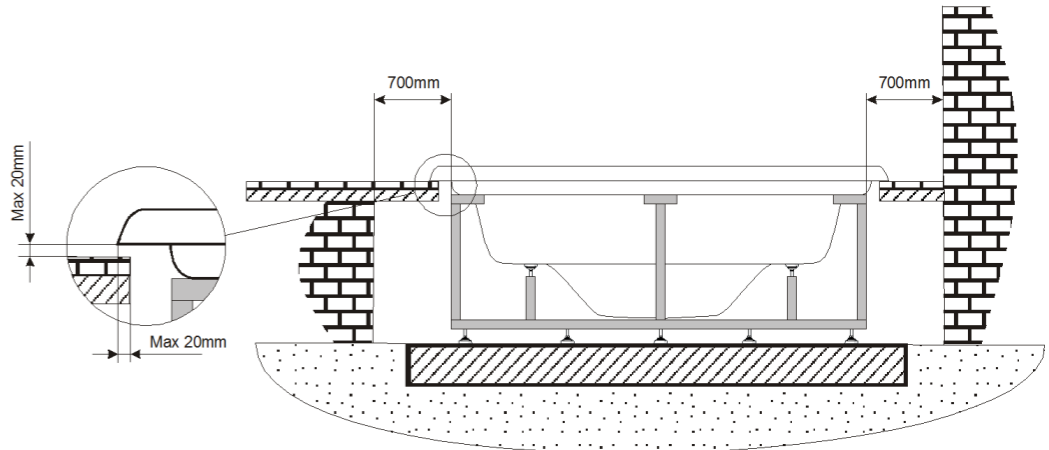
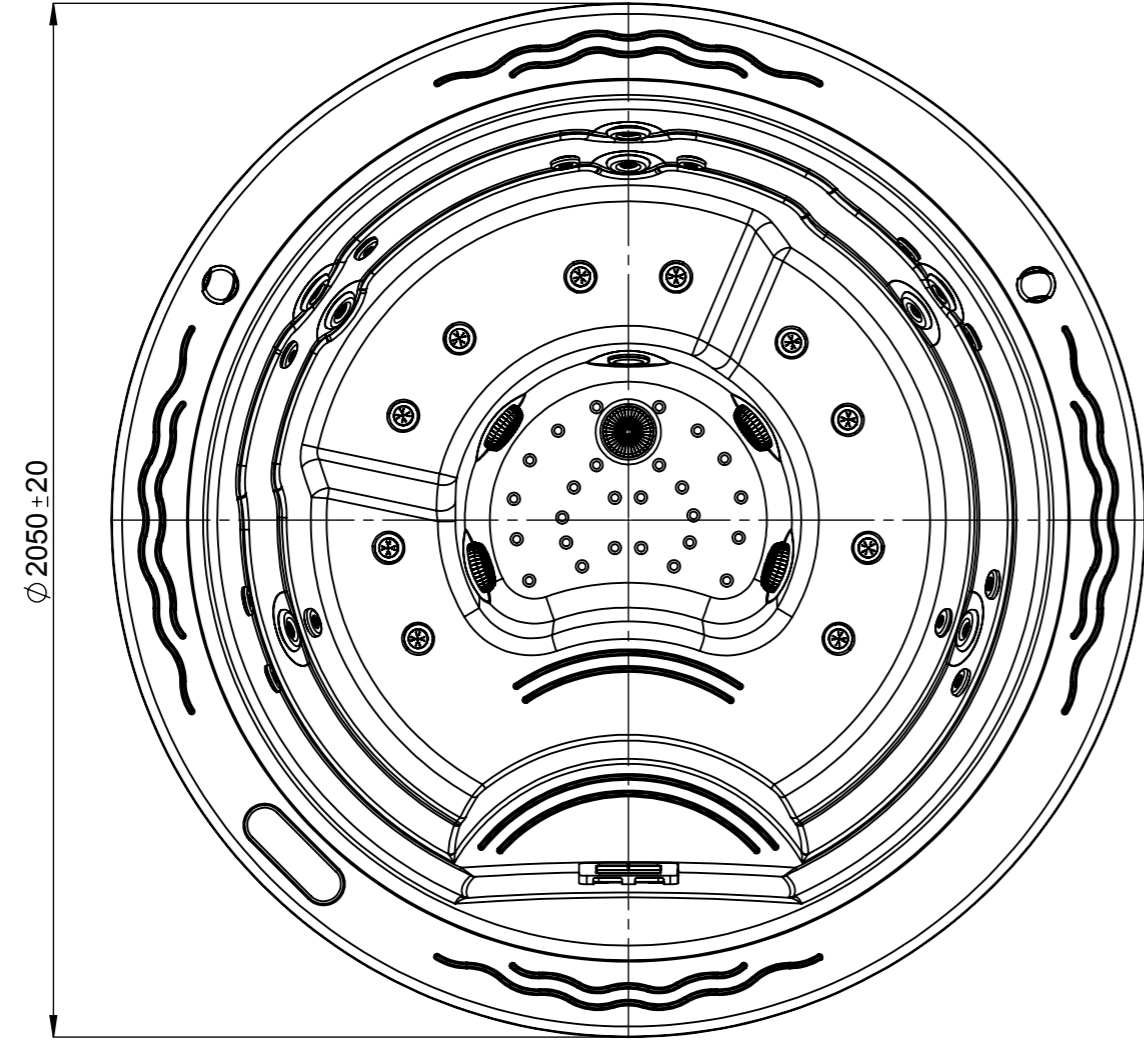


A	Suction-Water Massage Pump 1	Ø 63 FEMALE SOCKET
B	Return-Water Massage Pump 1	Ø 63 FEMALE SOCKET
C	Return-Air Massage	Ø 50 FEMALE SOCKET
D	Suction-Filtration Pump Bottom Spa	Ø 63 FEMALE SOCKET
E	Return-Filtration Pump Inlets	Ø 63 FEMALE SOCKET



**WARNING:**  
It's essential to keep a minimum clearance access of **700mm** all around.

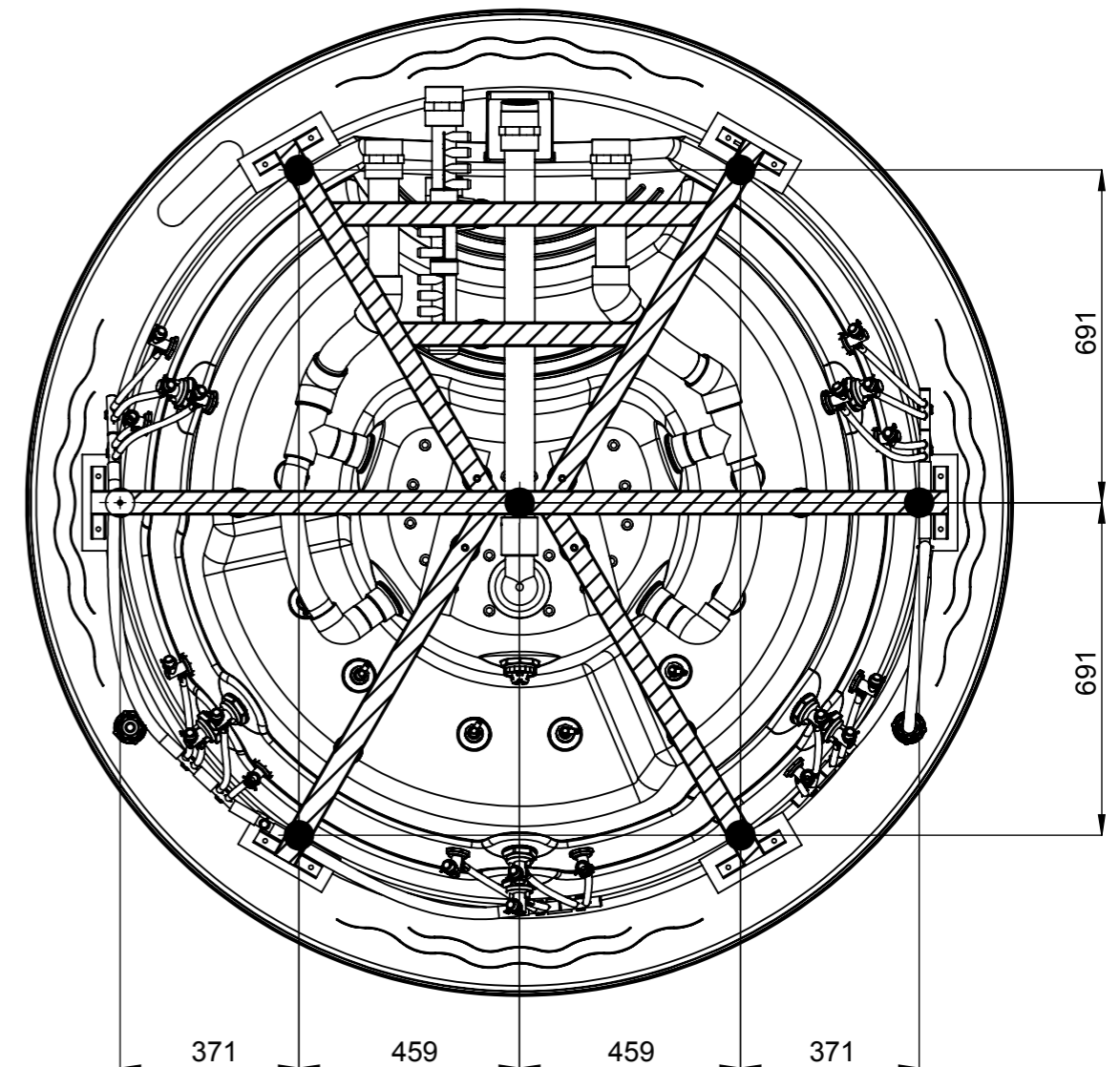
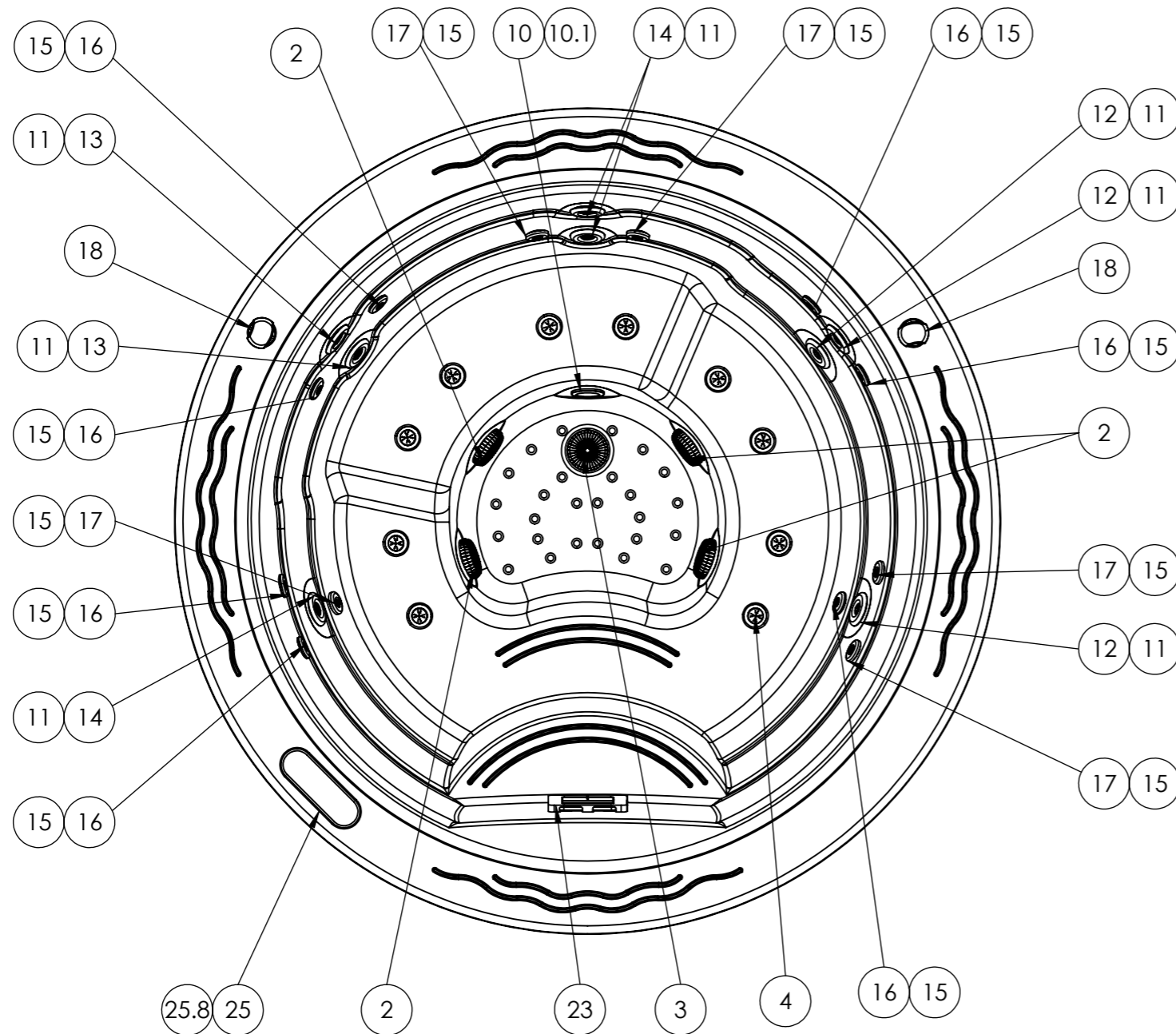


According to our policy of continuous improvement, dimensions, features or components of this product can be partially or completely changed without prior notice.  
It's Customer responsibility to verify that this is the last version of the drawing

04	08/05/2017	O. Faura	Changing of electronic parts references.
03	17/12/2014	I.Pozo	Change tolerance heigh spa
02	15/10/2014	I.Pozo	New spare template
01	12/05/2014	I.Pozo	New templates
00	22/12/2009	M.Freixes	Drawing creation
Change No.	Date	Name	Modification


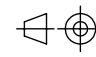
↑ ↑  
HYDRAULIC CONNECTIONS ACCESS

Remarks Dimensions in mm. General Tolerances +/- 10mm			<b>COMMERCIAL</b>			
Drawn	22/12/2009	M.Freixes		Part Number <b>49859</b>	Rev. <b>04</b>	First Angle Projection 
Checked	-	I.Nicolas				
Scale 1:15	General Tolerance DIN 7168 ISO 2768g					
Sheet 1/2	Property of IBERSPA S.L. Avda. Pla d'Urgell 2-8 25200 Cervera, Spain. Don't use without permission. Keep this information confidential and use it solely for the permitted purpose.					



ACCESSORIES			
Position Num.	Part N° SPARE	Description SPARE	Quant.
1	303325R	SPA SUPPORT	17
2	RPOR0225	GREY SPA DRAIN 2" ADAPTOR SOCKET D.50	4
3	RPOR0226	GREY SPA DRAIN 2" ADAPTOR ELBOW 90 D.50	1
4	REMP0046	WHITE-STAINLESS STEEL AIR NOZZLE	10
10	RPOR0239	SPOTLIGHT LED SET RD	1
10.1	RPOR0240	MASTER LED LIGHT	1
11	RPOR0236	JET BODY SET RD 3"	8
12	RPOR0231	FRONTAL JET 3" STAINLESS STEEL DIRECTIONAL	3
13	RPOR0233	FRONTAL JET 3" STAINLESS STEEL TWIN ROTO	2
14	RPOR0232	FRONTAL JET 3" STAINLESS STEEL 1 JET ROTO	3
15	RPOR0235	JET BODY SET RD 2"	12
16	RPOR0230	FRONTAL JET 2" STAINLESS STEEL DIRECTIONAL	7
17	RPOR0260	JET TWIN ROTO 2" INOX	5
18	RPOR0261	VENTURY CONTROLLER SS	2
23	RPOR0178	SKIMMER FILTER GRIS for preassure filter	1
25	RPOR0356	CONTROL PANEL TP800	1
25.8	RPOR0356-C	COVER DIGITAL STANDARD PANEL TP800 (1 PUMP + BLOWER)	1

According to our policy of continuous improvement, dimensions, features or components of this product can be partially or completely changed without prior notice. It's Customer responsibility to verify that this is the last version of the drawing

04	08/05/2017	O. Faura	Changing of electronic parts references.
03	17/12/2014	I.Pozo	Change tolerance heigh spa
02	15/10/2014	I.Pozo	New spare template
01	12/05/2014	I.Pozo	New templates
00	22/12/2009	M.Freixes	Drawing creation
Change No.	Date	Name	Modification
Remarks			SPARE PARTS DRAWING
Dimensions in mm. General Tolerances +/- 10mm			
Drawn	22/12/2009	M.Freixes	
Checked	-	I.Nicolas	
Scale 1:15	General Tolerance		Part Number <b>49859</b>
Sheet 2/2	DIN 7168 ISO 2768g		
			Rev. <b>04</b>
			First Angle Projection 
Property of IBERSPA S.L. Avda. Pla d'Urgell 2-8 25200 Cervera, Spain. Don't use without permission. Keep this information confidential and use it solely for the permitted purpose.			