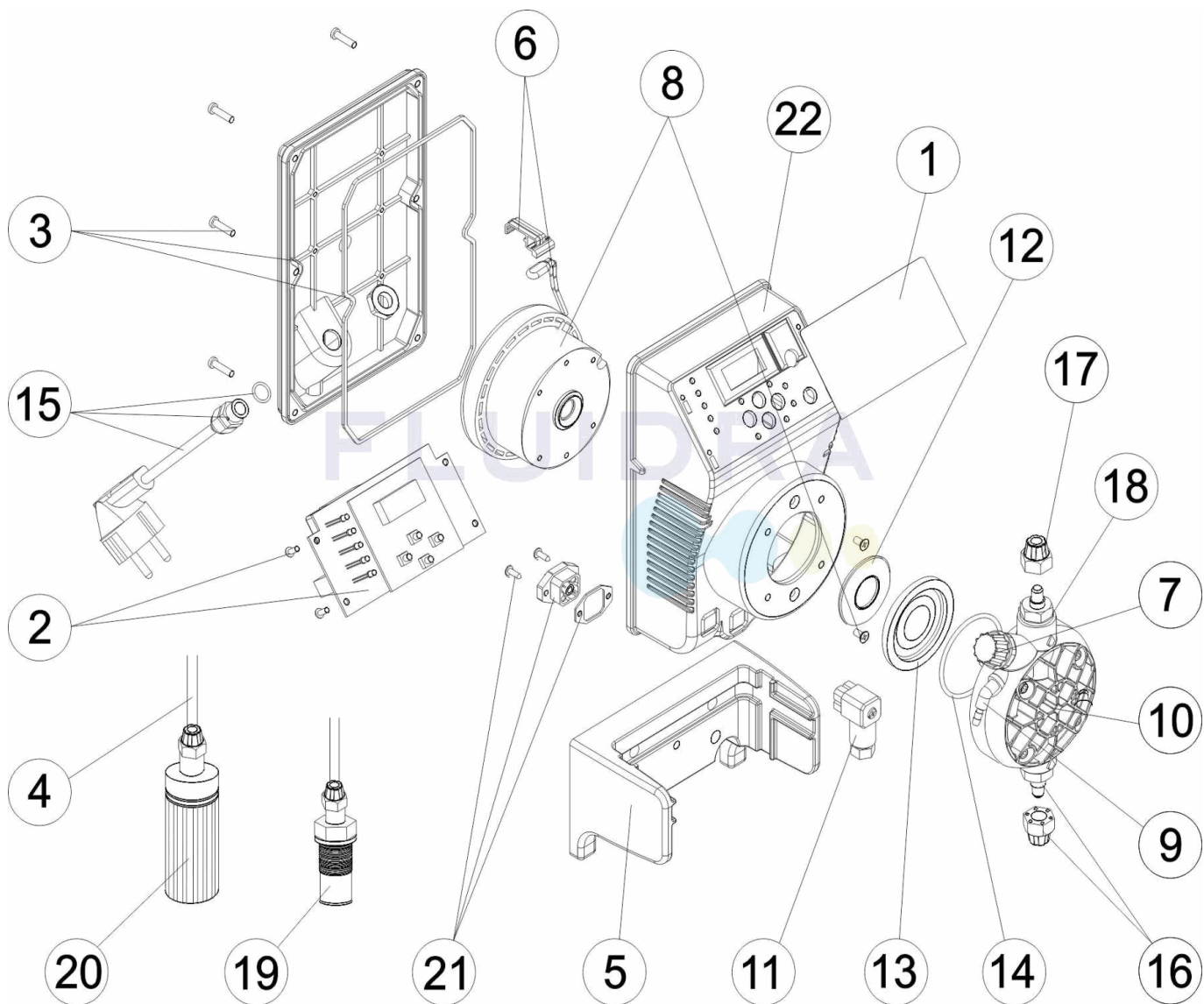


CODIGO **43501, 43502, 43503, 43504**

 DESCRIPCION: **BOMBA EXACTUS VOLUMETRICA VFT/MB 2009**

ESPAÑOL

POS	CODIGO	DESCRIPCION	POS	CODIGO	DESCRIPCION
1	4408032801	PANEL TACTIL VFT/MB EXACTUS 2009	11	4408031729	CONECTOR DE NIVEL
2	4408031208	CIRCUITO ELECTRONICO VFT/MB 230V	12	* 4408031119	ARANDELA PISTON 2L 5KG - 2L 10KG - 5L 10KG
3	4408030025	TAPA POSTERIOR EXACTUS CON JUNTA	12	* 4408030531	ARANDELA PISTON 5L 7KG
4	4408030122	TUBO ASPIRACION/IMPULSION	12	* 4408031121	ARANDELA PISTON 10L 5KG
5	4408032303	SOPORTE EXACTUS 2009	12	* 4408031122	ARANDELA PISTON 20L 5KG
6	4408032305	SOPORTE MAS TERMOSTADO 110°	13	* 4408030119	MEMBRANA COMPLETA
7	4408032308	TAPON PURGA CABEZAL CP STD	13	* 4408030429	MEMBRANA COMPLETA 20L 5KG
8	* 4408030118	ELECTROIMAN COMPLETO 5L 7KG	14	* 4408030111	JUNTA TORICA CABEZAL
8	* 4408031114	ELECTROIMAN 5L 10KG	14	* 4408030413	JUNTA TORICA CABEZAL 20L 5KG
8	* 4408030517	ELECTROIMAN 10L 5KG	15	4408031221	CABLE ALIMENTACION
8	* 4408032309	ELECTROIMAN 20L -5KG.	16	4408030112	CUERPO RACORD + DUTRAL
9	4408031203	RACOR PURGA CABEZAL	16	4408030113	CUERPO RACORD + VITON
10	* 4408031205	CABEZAL COMPLETO	16	4408030114	CUERPO RACORD + SILICONA

* -> VER HOJA DE OBSERVACIONES

CODIGO **43501, 43502, 43503, 43504**

DESCRIPCION: **BOMBA EXACTUS VOLUMETRICA VFT/MB 2009**

10	* 4408030409	CABEZAL COMPLETO 20L. 5KG.	17	4408030126	TUERCA SUJECCION TUBO
18	4408030115	VALVULA DUTRAL + SOPORTE	20	4408030123	FILTRO ASPIRACION COMPLETO
18	4408030116	VALVULA VITON + SOPORTE	21	4408031405	CONECTOR MACHO
18	4408030117	VALVULA SILICONA + SOPORTE	22	57174R0001	CAJA EXACTUS
19	4408030121	VALVULA INYECCION COMPLETA			

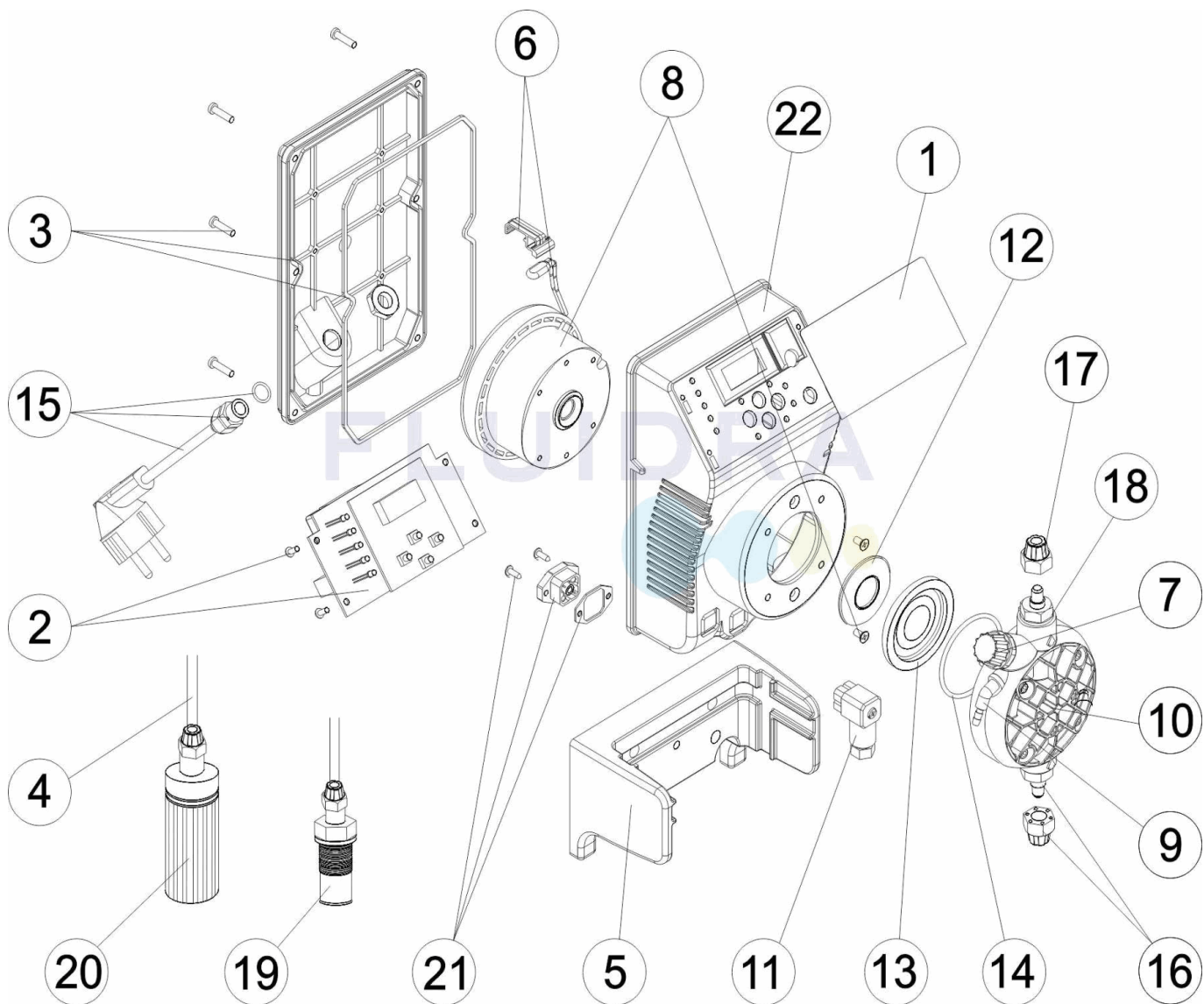
CODIGO **43501, 43502, 43503, 43504**

DESCRIPCION: **BOMBA EXACTUS VOLUMETRICA VFT/MB 2009**

OBSERVACIONES

POS	CODIGO	OBSERVACIONES
8	4408030118	PARA: 43501
8	4408031114	PARA: 43502
8	4408030517	PARA: 43503
8	4408032309	PARA: 43504
10	4408031205	PARA: 43501, 43502, 43503
10	4408030409	PARA: 43504
12	4408031119	PARA: 43501
12	4408030531	PARA: 43502
12	4408031121	PARA: 43503
12	4408031122	PARA: 43504
13	4408030119	PARA: 43501, 43502, 43503
13	4408030429	PARA: 43504
14	4408030111	PARA: 43501, 43502, 43503
14	4408030413	PARA: 43504

CODE **43501, 43502, 43503, 43504**

 DESCRIPTION: **POMPE EXACTUS VOLUMÉTRIQUE VFT/MB 2009**

FRANCAIS

POS	CODE	DESCRIPTION	POS	CODE	DESCRIPTION
1	4408032801	TABEAU DE CONTROLE TACTILE VFT/MB 2009	11	4408031729	CONECTEUR DE NIVEAU
2	4408031208	CIRCUIT ELECTRONIQUE VFT/MB. 230V.	12	* 4408031119	RONDELLE PISTON 2L 5KG - 2L 10KG - 5L 10KG
3	4408030025	COUVERCLE POMPE EXACTUS	12	* 4408030531	RONDELLE PISTON 5L 7KG
4	4408030122	TUBE ASPIRATION/IMPULSION	12	* 4408031121	RONDELLE PISTON 10L 5KG
5	4408032303	SUPPORT DE POMPE EXACTUS 2009	12	* 4408031122	RONDELLE PISTON 20L 5KG
6	4408032305	SUPPORT + THERMOSTAT DE 110 °	13	* 4408030119	MEMBRANE COMPLETE
7	4408032308	BOUCHON PURGE	13	* 4408030429	MEMBRANE COMPLETE 20L 5KG
8	* 4408030118	ELECTROAIMANT COMPLETO 5L 7KG	14	* 4408030111	JOINT TORIQUE TETE
8	* 4408031114	ELECTROAIMANT 5L 10KG	14	* 4408030413	JOINT TORIQUE TETE 20L 5KG
8	* 4408030517	ELECTROAIMANT 10L 5KG	15	4408031221	CABLE ALIMENTATION
8	* 4408032309	ELECTROAIMANT 20L. 5KG	16	4408030112	CORPS RACCORD + CLAPET DUTRAL
9	4408031203	RACCOR PURGE	16	4408030113	CORPS RACCORD + CLAPET VITON
10	* 4408031205	TETE COMPLET	16	4408030114	CORPS RACCORD + CLAPET SILICONE

* -> VOIR FICHE D'OBSERVATIONS

CODE **43501, 43502, 43503, 43504**

 DESCRIPTION: **POMPE EXACTUS VOLUMÉTRIQUE VFT/MB 2009**

10	* 4408030409	TETE COMPLET 20L. 5KG.	17	4408030126	ECROU DE TUBE D'ASPIRATION
18	4408030115	CLAPET DUTRAL + SUPPORT	20	4408030123	FILTRE ASPIRATION COMPLETE
18	4408030116	CLAPET VITON + SUPPORT	21	4408031405	CONNECTEUR MÂLE
18	4408030117	CLAPET SILICONA + SUPPORT	22	57174R0001	BOITIER DE POMPE EXACTUS
19	4408030121	VANNE INJECTION COMPLETE			

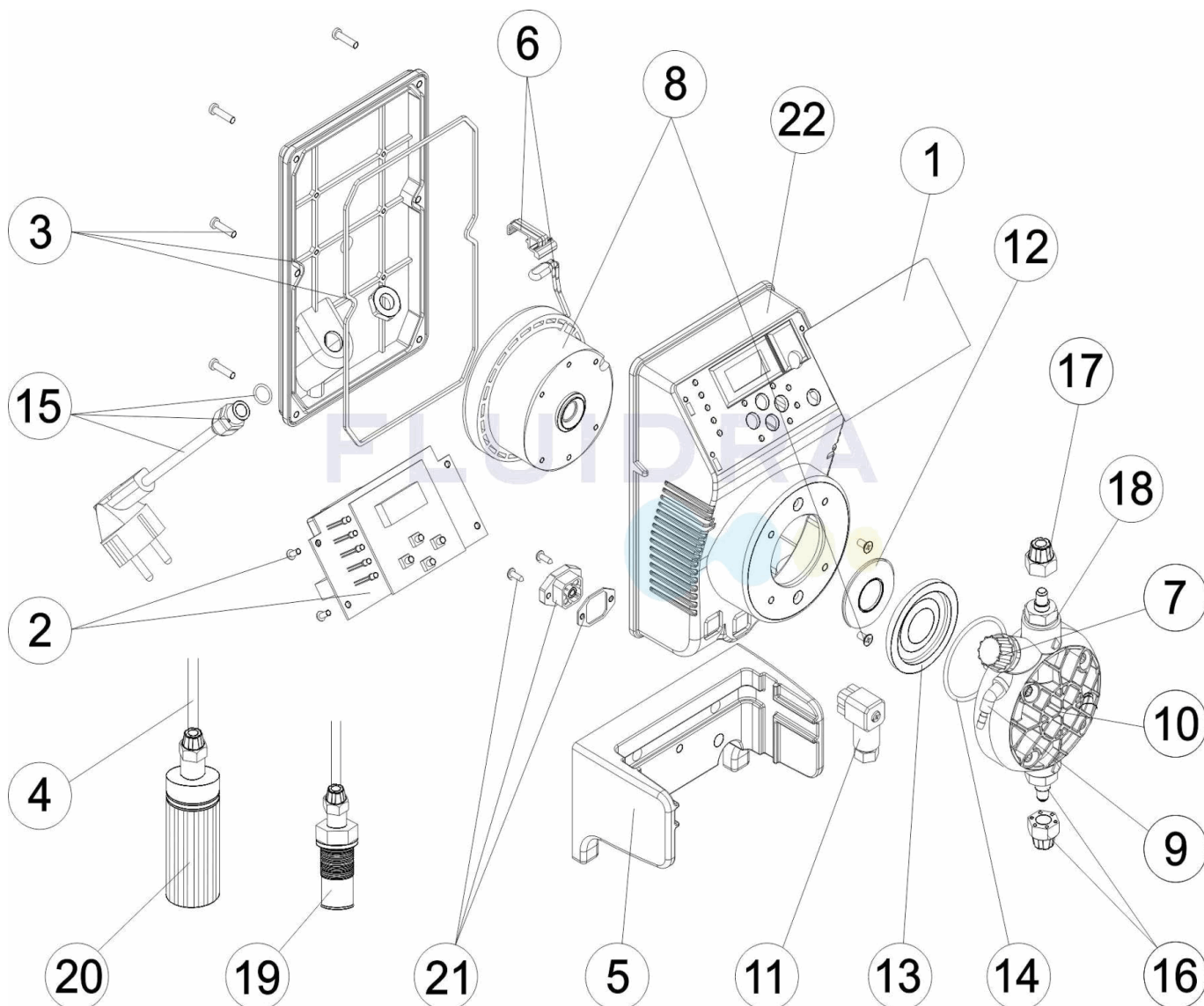
CODE **43501, 43502, 43503, 43504**

DESCRIPTION: **POMPE EXACTUS VOLUMÉTRIQUE VFT/MB 2009**

OBSERVATIONS

POS	CODE	OBSERVATIONS
8	4408030118	POUR: 43501
8	4408031114	POUR: 43502
8	4408030517	POUR: 43503
8	4408032309	POUR: 43504
10	4408031205	POUR: 43501, 43502, 43503
10	4408030409	POUR: 43504
12	4408031119	POUR: 43501
12	4408030531	POUR: 43502
12	4408031121	POUR: 43503
12	4408031122	POUR: 43504
13	4408030119	POUR: 43501, 43502, 43503
13	4408030429	POUR: 43504
14	4408030111	POUR: 43501, 43502, 43503
14	4408030413	POUR: 43504

CODE **43501, 43502, 43503, 43504**

 DESCRIPTION: **EXACTUS VOLUMETRIC PUMP VFT/MB 2009**


ENGLISH

POS	CODE	DESCRIPTION	POS	CODE	DESCRIPTION
1	4408032801	TOUCH SCREEN PANEL VFT/MB 2009	11	4408031729	FEMALE CONNECTOR BCN
2	4408031208	ELECTRONIC CIRCUIT VFT/MB. 230V.	12	* 4408031119	PISTON WASHER 2L 5KG - 2L 10KG - 5L 10KG
3	4408030025	PUMP REAR COVER	12	* 4408030531	PISTON WASHER 5L 7KG
4	4408030122	SUCTION/RETURN TUBE	12	* 4408031121	PISTON WASHER 10L 5KG
5	4408032303	PUMP SUPPORT 2009	12	* 4408031122	PISTON WASHER 20L 5KG
6	4408032305	SUPPORT AND THERMOSTAT 110°	13	* 4408030119	DIAPHRAM COMPLETE
7	4408032308	DRAIN PLUG	13	* 4408030429	DIAPHRAM COMPLETE 20L 5KG
8	* 4408030118	ELECTROMAGNET ASSEMBLY COMPLETEO 5L 7KG	14	* 4408030111	HEAD O RING
8	* 4408031114	ELECTROMAGNET 5L 10KG	14	* 4408030413	HEAD O RING 20L 5KG
8	* 4408030517	ELECTROMAGNET 10L 5KG	15	4408031221	SUPPLY CABLE
8	* 4408032309	ELECTROMAGNET 20L.- 5KG	16	4408030112	HEAD CONNECTOR BODY + DUTRAL
9	4408031203	PURGE FITTING	16	4408030113	HEAD CONNECTOR BODY + VITON
10	* 4408031205	COMPLETE HEAD ASSEMBLY	16	4408030114	HEAD CONNECTOR BODY + SILICON

* -> SEE OBSERVATIONS SHEET

CODE **43501, 43502, 43503, 43504**

DESCRIPTION: **EXACTUS VOLUMETRIC PUMP VFT/MB 2009**

10	* 4408030409	COMPLETE HEAD ASSEMBLY 20L. 5KG.	17	4408030126	SUCTION TUBE NUT
18	4408030115	DUTRAL VALVE + SUPPORT	20	4408030123	FILTER ASSEMBLY
18	4408030116	VITON VALVE + SUPPORT	21	4408031405	MALE CONNECTOR
18	4408030117	SILICON VALVE + SUPPORT	22	57174R0001	EXACTUS PUMP BOX
19	4408030121	INJECTOR VALVE ASSEMBLY			

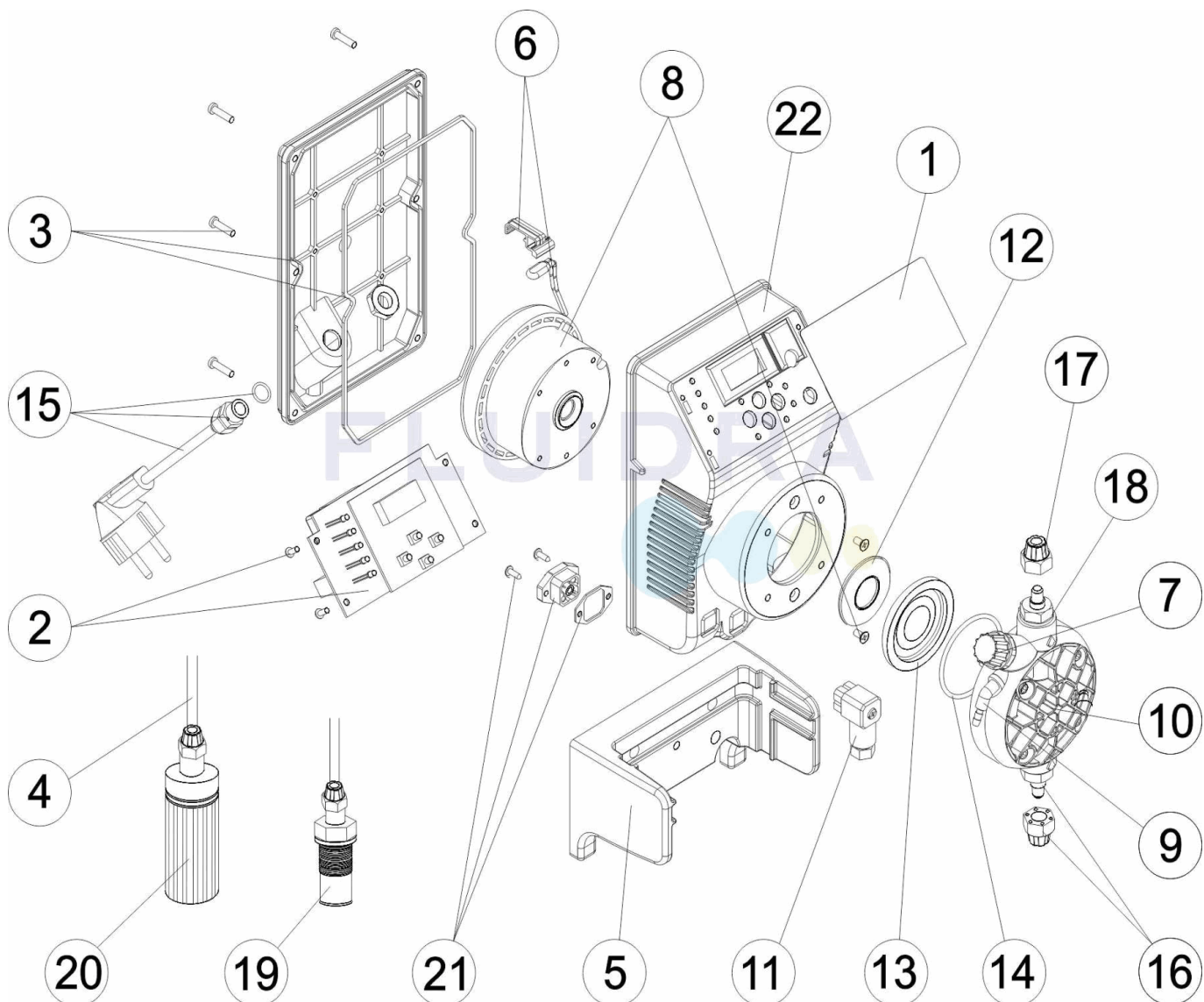
CODE **43501, 43502, 43503, 43504**

DESCRIPTION: **EXACTUS VOLUMETRIC PUMP VFT/MB 2009**

OBSERVATIONS

POS	CODE	OBSERVATIONS
8	4408030118	FOR: 43501
8	4408031114	FOR: 43502
8	4408030517	FOR: 43503
8	4408032309	FOR: 43504
10	4408031205	FOR: 43501, 43502, 43503
10	4408030409	FOR: 43504
12	4408031119	FOR: 43501
12	4408030531	FOR: 43502
12	4408031121	FOR: 43503
12	4408031122	FOR: 43504
13	4408030119	FOR: 43501, 43502, 43503
13	4408030429	FOR: 43504
14	4408030111	FOR: 43501, 43502, 43503
14	4408030413	FOR: 43504

CODICE **43501, 43502, 43503, 43504**

 DESCRIZIONE: **POMPA EXACTUS VOLUMETRICA VFT/MB 2009**

ITALIANO

POS	CODICE	DESCRIZIONE	POS	CODICE	DESCRIZIONE
1	4408032801	PANNELLO DIGITALE VFT/MB 2009	11	4408031729	CONNETTORE DI LIVELLO
2	4408031208	CIRCUITO ELETTRONICO VFT/MB. 230V	12	* 4408031119	RONDELLA PISTONE 2L 5KG - 2L 10KG - 5L 10KG
3	4408030025	COPRIVENTOLA POMPA EXACTUS	12	* 4408030531	RONDELLA PISTONE 5L 7KG
4	4408030122	TUBO DI ASPIRAZIONE/ MANDATA	12	* 4408031121	RONDELLA PISTONE 10L 5KG
5	4408032303	SUPPORTO POMPA EXACTUS 2009	12	* 4408031122	RONDELLA PISTONE 20L 5KG
6	4408032305	SUPPORTO + TERMOSTATO 110°	13	* 4408030119	MEMBRANA COMPLETA
7	4408032308	TAPPO SPURGO	13	* 4408030429	MEMBRANA COMPLETA 20L 5KG
8	* 4408030118	ELETTROCALAMITA COMPLETA 5L 7KG	14	* 4408030111	O-RING PER TESTA
8	* 4408031114	ELETTROCALAMITA 5L 10KG	14	* 4408030413	O-RING TESTA 20L 5KG
8	* 4408030517	ELETTROCALAMITA 10L 5KG	15	4408031221	CAVO DI ALIMENTAZIONE
8	* 4408032309	ELETTROCALAMITA 20L 5KG.	16	4408030112	CORPO RACCORDO + VALVOLA IN DUTRAL
9	4408031203	RACORDO SCARIO	16	4408030113	CORPO RACCORDO + VALVOLA IN VITON
10	* 4408031205	TESTA COMPLETA	16	4408030114	CORPO RACCORDO + VALVOLA IN SILICONE

* -> SI FACCIA RIFERIMENTO AL FOGLIO DELLE OSSERVAZIONI

CODICE **43501, 43502, 43503, 43504**

 DESCRIZIONE: **POMPA EXACTUS VOLUMETRICA VFT/MB 2009**

10	* 4408030409	TESTA COMPLETA 20L. 5KG.	17	4408030126	GHIERA FISSAGGIO TUBO
18	4408030115	VALVOLA DUTRAL + SUPPORTO	20	4408030123	FILTRO ASPIRAZIONE COMPLETO
18	4408030116	VALVOLA + SUPPORTO	21	4408031405	CONNETTORE MASCHIO
18	4408030117	VALVOLA SILICONE + SUPPORTO	22	57174R0001	CASSA POMPA EXACTUS
19	4408030121	VALVOLA INIEZIONE COMPLETA			

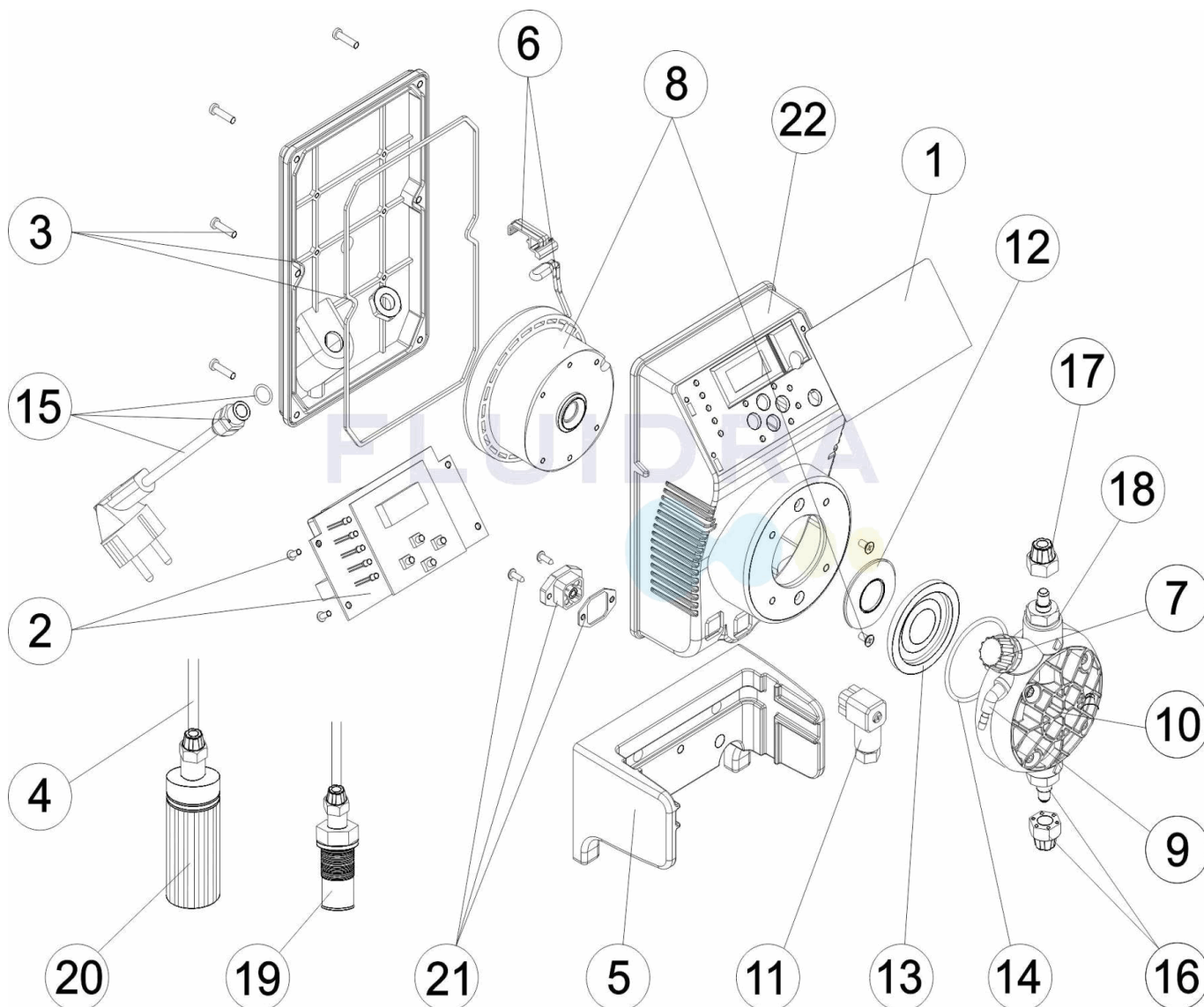
CODICE **43501, 43502, 43503, 43504**

DESCRIZIONE: **POMPA EXACTUS VOLUMETRICA VFT/MB 2009**

OSSERVAZIONI

POS	CODICE	OSSERVAZIONI
8	4408030118	PER: 43501
8	4408031114	PER: 43502
8	4408030517	PER: 43503
8	4408032309	PER: 43504
10	4408031205	PER: 43501, 43502, 43503
10	4408030409	PER: 43504
12	4408031119	PER: 43501
12	4408030531	PER: 43502
12	4408031121	PER: 43503
12	4408031122	PER: 43504
13	4408030119	PER: 43501, 43502, 43503
13	4408030429	PER: 43504
14	4408030111	PER: 43501, 43502, 43503
14	4408030413	PER: 43504

CODE **43501, 43502, 43503, 43504**

 BESCHREIBUNG: **PUMPE EXACTUS VOLUMETRISCH VFT/MB 2009**

DEUTSCH

POS	CODE	BESCHREIBUNG	POS	CODE	BESCHREIBUNG
1	4408032801	TOUCHSCREEN VFT/MB EXACTUS 2009	11	4408031729	VERBINDUNGSTÜCK FÜLLSTAND
2	4408031208	PLATINE SCHALTKREIS VFT/MB 230 V	12	* 4408031119	KOLBENSCHIBE 2 L 5 KG - 2 L 10 KG - 5 L 10 KG
3	4408030025	ABDECKUNG HINTEN EXACTUS UND DICHTUNG	12	* 4408030531	KOLBENSCHIBE 5 L 7 KG
4	4408030122	ROHR SAUG/DRUCK	12	* 4408031121	KOLBENSCHIBE 10 L 5 KG
5	4408032303	HALTERUNG EXACTUS 2009	12	* 4408031122	KOLBENSCHIBE 20 L 5 KG
6	4408032305	HALTERUNG UND THERMOSTAT 110°	13	* 4408030119	KOMPLETTMEMBERAN
7	4408032308	ABLASSTOPFEN KOPFSTÜCK CP STD	13	* 4408030429	KOMPLETTMEMBERAN 20 L 5 KG
8	* 4408030118	ELEKTROMAGNET KOMPLETT 5 L 7 KG	14	* 4408030111	O-RING KOPFSTÜCK
8	* 4408031114	ELEKTROMAGNET 5 L 10 KG	14	* 4408030413	O-RING KOPFSTÜCK 20 L 5 KG
8	* 4408030517	ELEKTROMAGNET 10 L 5 KG	15	4408031221	VERSORGUNGSKABEL
8	* 4408032309	ELEKTROMAGNET 20 L - 5 KG	16	4408030112	VENTILSATZ MIT DUTRAL
9	4408031203	GEWINDE ABLASS KOPFSTÜCK	16	4408030113	VENTILSATZ MIT VITON
10	* 4408031205	KOPFSTÜCK KOMPLETT	16	4408030114	VENTILSATZ MIT SILIKON

* -> SIEHE ANMERKUNGSBLATT

CODE **43501, 43502, 43503, 43504**

 BESCHREIBUNG: **PUMPE EXACTUS VOLUMETRISCH VFT/MB 2009**

10	* 4408030409	KOPFSTÜCK KOMPLETT 20 L 5 KG	17	4408030126	MUTTER BEFESTIGUNG ROHR
18	4408030115	VENTIL DUTRAL MIT HALTERUNG	20	4408030123	SAUGFILTER KOMPLETT
18	4408030116	VENTIL VITON MIT HALTERUNG	21	4408031405	STECKER
18	4408030117	VENTIL SILIKON MIT HALTERUNG	22	57174R0001	GEHÄUSE EXACTUS
19	4408030121	INJEKTORVENTIL KOMPLETT			

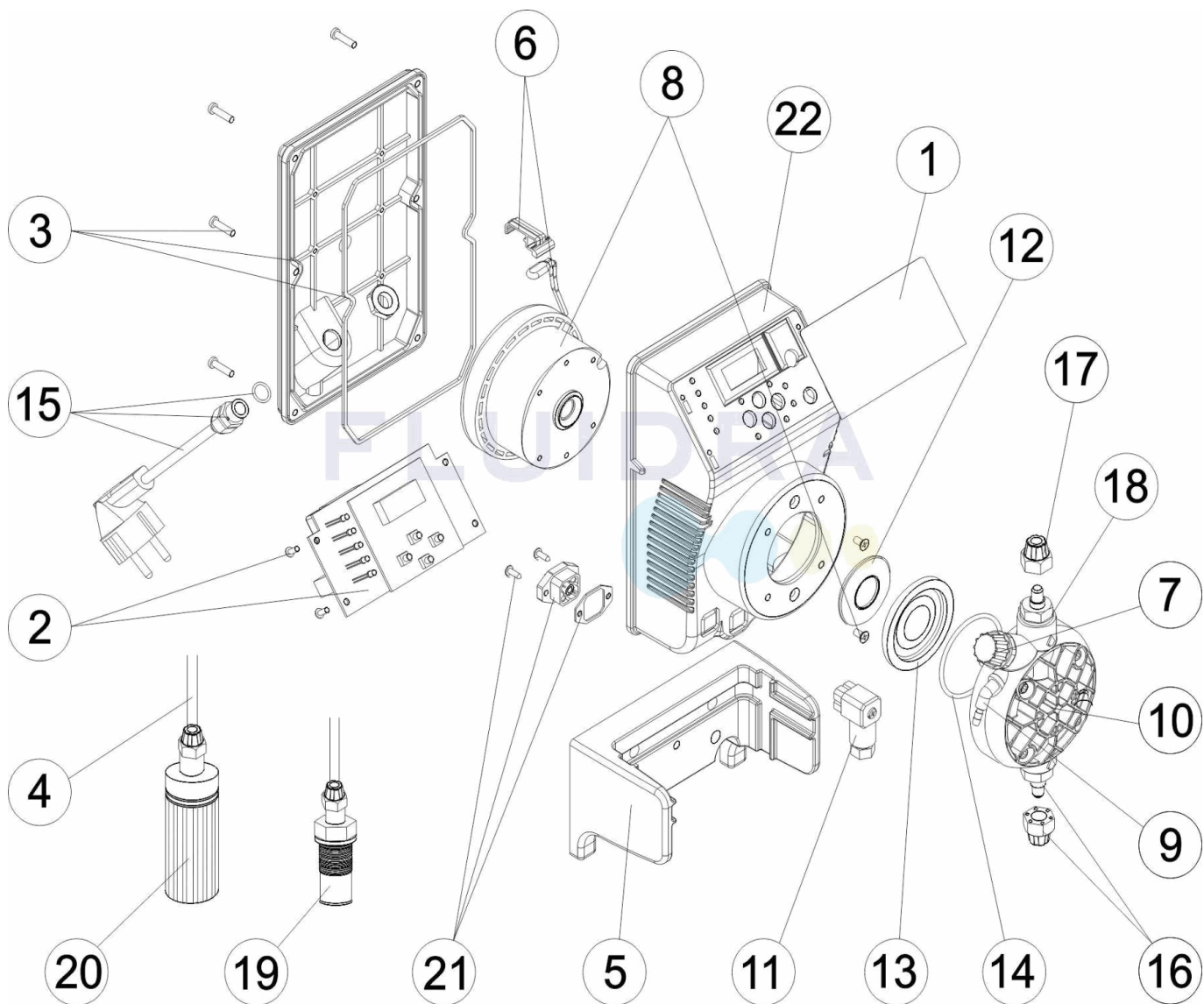
CODE **43501, 43502, 43503, 43504**

BESCHREIBUNG: **PUMPE EXACTUS VOLUMETRISCH VFT/MB 2009**

HINWEISE

POS	CODE	HINWEISE
8	4408030118	FÜR: 43501
8	4408031114	FÜR: 43502
8	4408030517	FÜR: 43503
8	4408032309	FÜR: 43504
10	4408031205	FÜR: 43501, 43502, 43503
10	4408030409	FÜR: 43504
12	4408031119	FÜR: 43501
12	4408030531	FÜR: 43502
12	4408031121	FÜR: 43503
12	4408031122	FÜR: 43504
13	4408030119	FÜR: 43501, 43502, 43503
13	4408030429	FÜR: 43504
14	4408030111	FÜR: 43501, 43502, 43503
14	4408030413	FÜR: 43504

CODIGO **43501, 43502, 43503, 43504**

 DESCRIÇÃO: **BOMBA EXACTUS VOLUMÉTRICA VFT/MB 2009**

PORTUGUES

POS	CODIGO	DESCRIÇÃO	POS	CODIGO	DESCRIÇÃO
1	4408032801	PAINEL DIGITAL TÁCTIL VFT/MB 2009	11	4408031729	LIGAÇÃO NIVEL
2	4408031208	CIRCUITO ELECTRONICO VFT/MB. 230V.	12	* 4408031119	ANILHA PISTON 2L 5KG - 2L 10KG - 5L 10KG
3	4408030025	TAMPA TRASEIRA BOMBA EXACTUS	12	* 4408030531	ANILHA PISTON 5L 7KG
4	4408030122	TUBO ASPIRAÇÃO/IMPULSÃO	12	* 4408031121	ANILHA PISTON 10L 5KG
5	4408032303	SUPORTE BOMBA EXACTUS 2009	12	* 4408031122	ANILHA PISTON 20L 5KG
6	4408032305	SUPORTE MAIS TERMOSTATO DE 110°	13	* 4408030119	MEMBRANA COMPLETA
7	4408032308	TAMPÃO PURGA	13	* 4408030429	MEMBRANA COMPLETA 20L 5KG
8	* 4408030118	ELECTROIMAN COMPLETO 5L 7KG	14	* 4408030111	JUNTA TORICA CABEÇAL
8	* 4408031114	ELECTROIMAN 5L 10KG	14	* 4408030413	JUNTA TORICA CABEÇAL 20L 5KG
8	* 4408030517	ELECTROIMAN 10L 5KG	15	4408031221	CABO ALIMENTAÇÃO
8	* 4408032309	ELECTROIMAN 20L. 5KG	16	4408030112	CORPO RACORD + DUTRAL
9	4408031203	RACCORD PURGA	16	4408030113	CORPO RACORD + VITON
10	* 4408031205	CABEÇAL COMPLETO	16	4408030114	CORPO RACORD + SILICONE

* -> VEJA A FICHA DE OBSERVAÇÕES

CODIGO **43501, 43502, 43503, 43504**

DESCRIÇÃO: **BOMBA EXACTUS VOLUMÉTRICA VFT/MB 2009**

10	* 4408030409	CABEÇAL COMPLETO 20L. 5KG.	17	4408030126	PORCA SUJEIÇÃO TUBO
18	4408030115	VÁLVULA DUTRAL + SUPORTE	20	4408030123	FILTRO ASPIRAÇÃO COMPLETO
18	4408030116	VÁLVULA VITON + SUPORTE	21	4408031405	LIGAÇÃO MACHO
18	4408030117	VÁLVULA SILICONE + SUPORTE	22	57174R0001	CAIXA BOMBA EXACTUS
19	4408030121	INJECTOR COMPLETO			

CODIGO **43501, 43502, 43503, 43504**

DESCRIÇÃO: **BOMBA EXACTUS VOLUMÉTRICA VFT/MB 2009**

OBSERVACÕES

POS	CODIGO	OBSERVACÕES
8	4408030118	PARA: 43501
8	4408031114	PARA: 43502
8	4408030517	PARA: 43503
8	4408032309	PARA: 43504
10	4408031205	PARA: 43501, 43502, 43503
10	4408030409	PARA: 43504
12	4408031119	PARA: 43501
12	4408030531	PARA: 43502
12	4408031121	PARA: 43503
12	4408031122	PARA: 43504
13	4408030119	PARA: 43501, 43502, 43503
13	4408030429	PARA: 43504
14	4408030111	PARA: 43501, 43502, 43503
14	4408030413	PARA: 43504