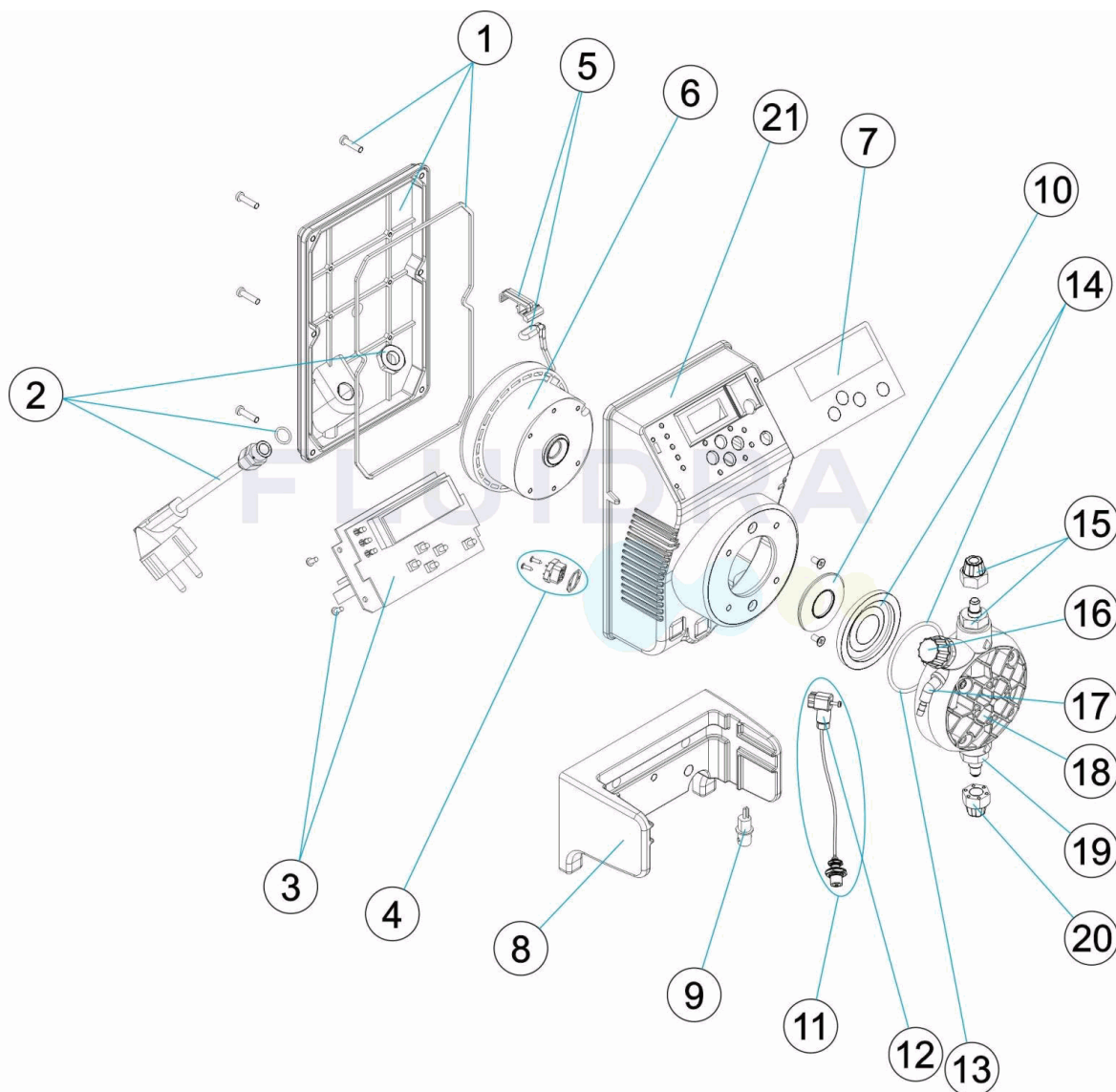


CODIGO **57168, 57169, 57170, 57892, 57893, 57894**

 DESCRIPCION: **BOMBA EXACTUS PH-RX/M**

ESPAÑOL

POS	CODIGO	DESCRIPCION	POS	CODIGO	DESCRIPCION
1	4408030025	TAPA POSTERIOR EXACTUS CON JUNTA	11	* 4408030062	SONDA DE NIVEL MA/MB
2	4408031221	CABLE ALIMENTACION	12	* 4408031729	CONECTOR DE NIVEL
3	4408032602	CIRCUITO ELECTRONICO PH/RX. 230/240V.	13	4408030111	JUNTA TORICA CABEZAL
4	* 4408031217	CONECTOR	14	4408030119	MEMBRANA COMPLETA
5	4408032305	SOPORTE MAS TERMOSTADO 110°	15	4408030112	CUERPO RACORD + DUTRAL
6	* 4408030118	ELECTROIMAN COMPLETO 5L 7KG	15	4408030113	CUERPO RACORD + VITON
6	* 4408031114	ELECTROIMAN 5L 10KG	15	4408030114	CUERPO RACORD + SILICONA
6	* 4408030517	ELECTROIMAN 10L 5KG	16	4408032308	TAPON PURGA CABEZAL CP STD
7	4408030028	PANEL TACTIL EXACTUS PH-RX/M	17	4408031203	RACOR PURGA CABEZAL
8	4408032303	SOPORTE EXACTUS 2009	18	4408031205	CABEZAL COMPLETO
9	4408032603	CONECTOR HEMBRA BNC EXACTUS 2009	19	4408030115	VALVULA DUTRAL + SOPORTE
10	* 4408030531	ARANDELA PISTON 5L 7KG	19	4408030116	VALVULA VITON + SOPORTE
10	* 4408031119	ARANDELA PISTON 2L 5KG - 2L 10KG - 5L 10KG	19	4408030117	VALVULA SILICONA + SOPORTE

* -> VER HOJA DE OBSERVACIONES

CODIGO **57168, 57169, 57170, 57892, 57893, 57894**

DESCRIPCION: **BOMBA EXACTUS PH-RX/M**

10	* 4408031121	ARANDELA PISTON 10L 5KG	20	4408030126	TUERCA SUJECCION TUBO
21	57174R0001	CAJA EXACTUS			

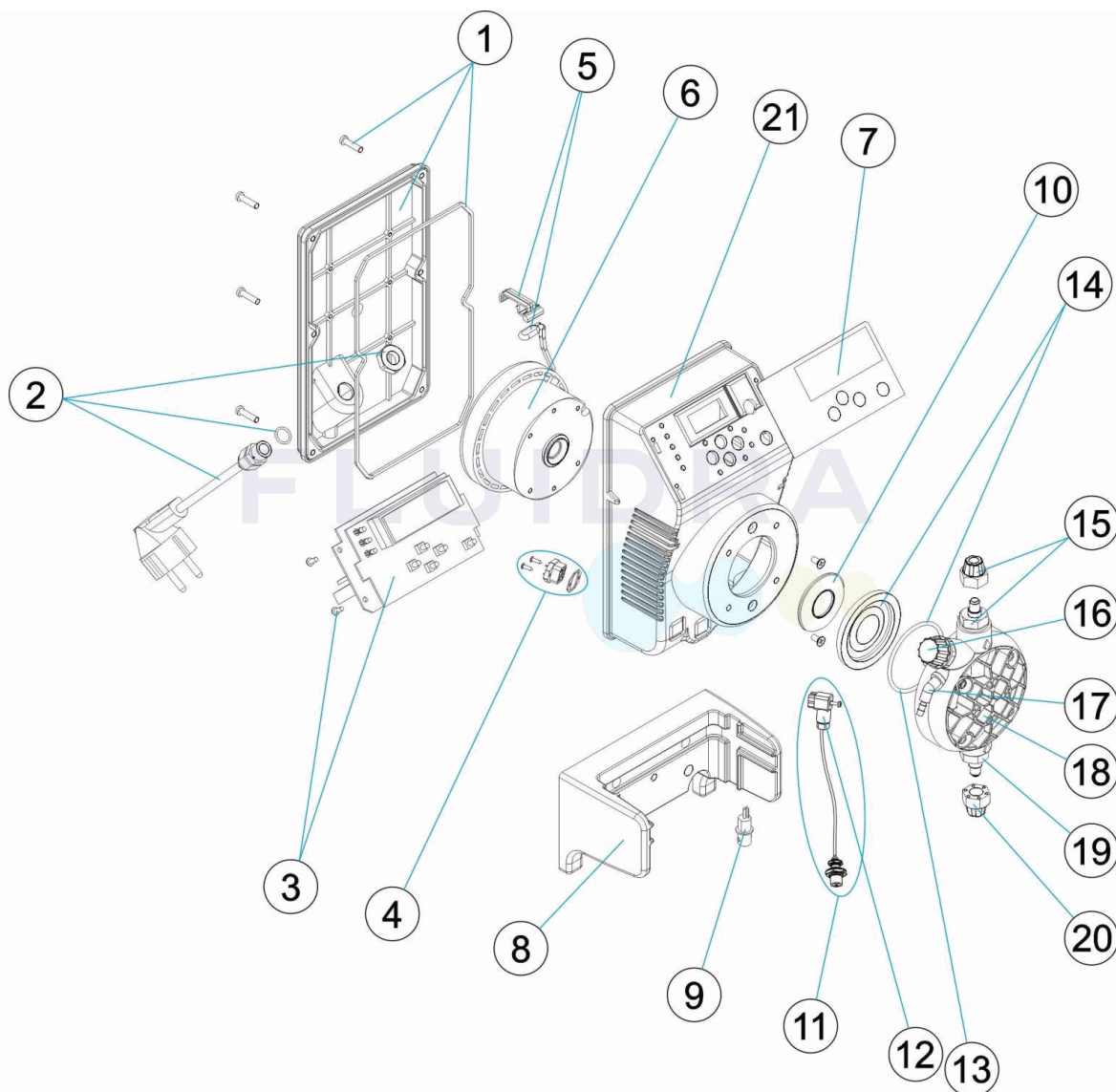
CODIGO **57168, 57169, 57170, 57892, 57893, 57894**

DESCRIPCION: **BOMBA EXACTUS PH-RX/M**

OBSERVACIONES

POS	CODIGO	OBSERVACIONES
4	4408031217	PARA: 57892, 57893, 57894
6	4408030118	PARA: 57168, 57892
6	4408031114	PARA: 57169, 57893
6	4408030517	PARA: 57170, 57894
10	4408030531	PARA: 57168, 57892
10	4408031119	PARA: 57169, 57893
10	4408031121	PARA: 57170, 57894
11	4408030062	PARA: 57892, 57893, 57894
12	4408031729	PARA: 57892, 57893, 57894

CODE **57168, 57169, 57170, 57892, 57893, 57894**

 DESCRIPTION: **POMPE EXACTUS PH-RX/M**


FRANCAIS

POS	CODE	DESCRIPTION	POS	CODE	DESCRIPTION
1	4408030025	COUVERCLE POMPE EXACTUS	11	* 4408030062	SONDE DE NIVEAU MA/MB
2	4408031221	CABLE ALIMENTATION	12	* 4408031729	CONECTEUR DE NIVEAU
3	4408032602	CIRCUIT ELECTRONIQUE PH/RX. 2009	13	4408030111	JOINT TORIQUE TETE
4	* 4408031217	CONNECTEUR	14	4408030119	MEMBRANE COMPLETE
5	4408032305	SUPPORT + THERMOSTAT DE 110 °	15	4408030112	CORPS RACCORD + CLAPET DUTRAL
6	* 4408030118	ELECTROAIMANT COMPLETO 5L 7KG	15	4408030113	CORPS RACCORD + CLAPET VITON
6	* 4408031114	ELECTROAIMANT 5L 10KG	15	4408030114	CORPS RACCORD + CLAPET SILICONE
6	* 4408030517	ELECTROAIMANT 10L 5KG	16	4408032308	BOUCHON PURGE
7	4408030028	TABEAU DE CONTROLE TACTILE PH-RX/M	17	4408031203	RACCOR PURGE
8	4408032303	SUPPORT DE POMPE EXACTUS 2009	18	4408031205	TETE COMPLET
9	4408032603	CONNEXION FEMELLE BCN EXACTUS 2009	19	4408030115	CLAPET DUTRAL + SUPPORT
10	* 4408030531	RONDELLE PISTON 5L 7KG	19	4408030116	CLAPET VITON + SUPPORT
10	* 4408031119	RONDELLE PISTON 2L 5KG - 2L 10KG - 5L 10KG	19	4408030117	CLAPET SILICONA + SUPPORT

* -> VOIR FICHE D'OBSERVATIONS

CODE **57168, 57169, 57170, 57892, 57893, 57894**

DESCRIPTION: **POMPE EXACTUS PH-RX/M**

10	* 4408031121	RONDELLE PISTON 10L 5KG	20	4408030126	ECROU DE TUBE D'ASPIRATION
21	57174R0001	BOITIER DE POMPE EXACTUS			

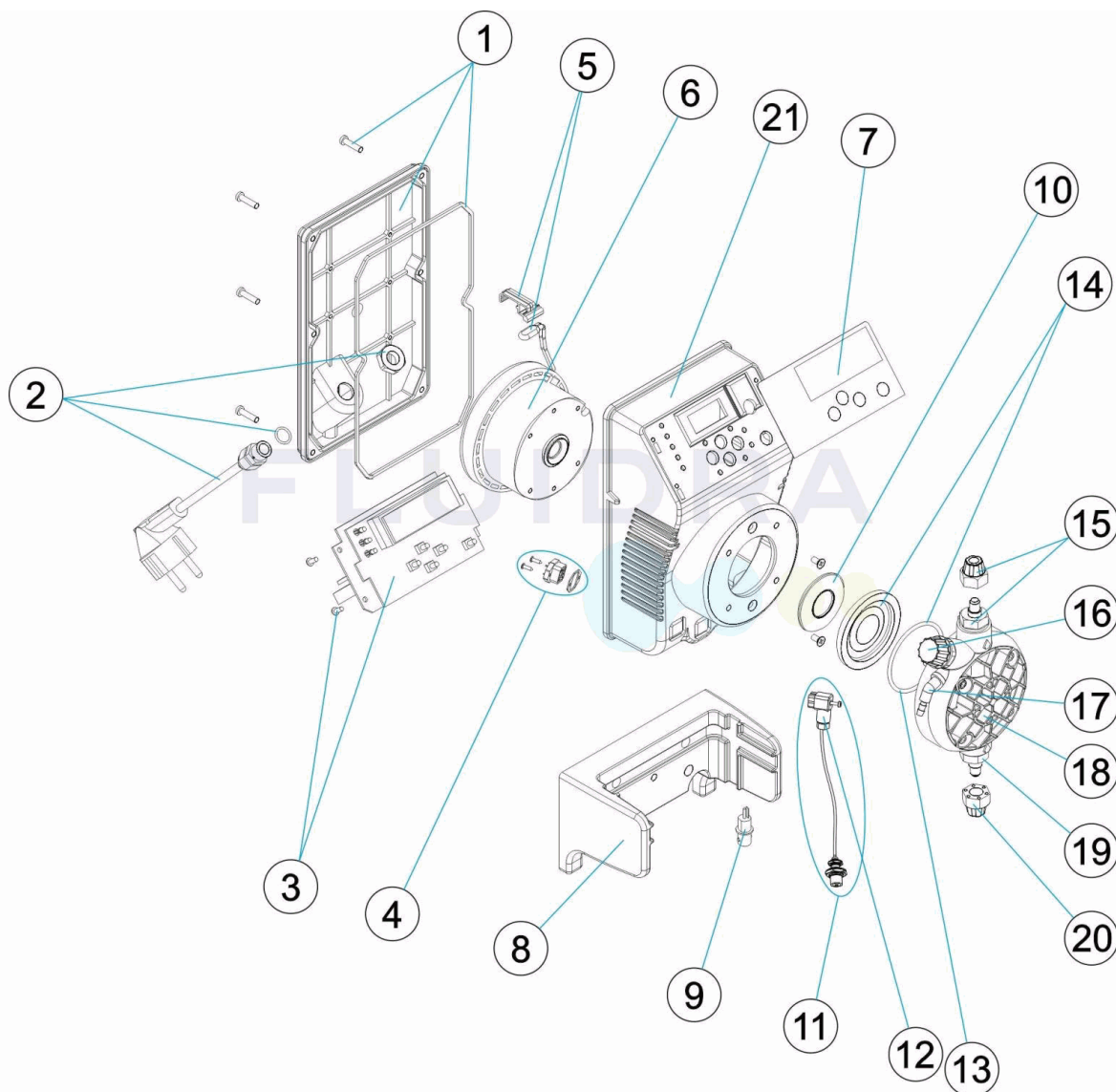
CODE **57168, 57169, 57170, 57892, 57893, 57894**

DESCRIPTION: **POMPE EXACTUS PH-RX/M**

OBSERVATIONS

POS	CODE	OBSERVATIONS
4	4408031217	POUR: 57892, 57893, 57894
6	4408030118	POUR: 57168, 57892
6	4408031114	POUR: 57169, 57893
6	4408030517	POUR: 57170, 57894
10	4408030531	POUR: 57168, 57892
10	4408031119	POUR: 57169, 57893
10	4408031121	POUR: 57170, 57894
11	4408030062	POUR: 57892, 57893, 57894
12	4408031729	POUR: 57892, 57893, 57894

CODE **57168, 57169, 57170, 57892, 57893, 57894**

 DESCRIPTION: **EXACTUS PUMP PH-RX/M**


ENGLISH

POS	CODE	DESCRIPTION	POS	CODE	DESCRIPTION
1	4408030025	PUMP REAR COVER	11	* 4408030062	LEVEL PROBE MA/MB
2	4408031221	SUPPLY CABLE	12	* 4408031729	FEMALE CONNECTOR BCN
3	4408032602	ELECTRONIC CIRCUIT PH/RX 2009	13	4408030111	HEAD O RING
4	* 4408031217	CONNECTOR	14	4408030119	DIAPHRAM COMPLETE
5	4408032305	SUPPORT AND THERMOSTAT 110°	15	4408030112	HEAD CONNECTOR BODY + DUTRAL
6	* 4408030118	ELECTROMAGNET ASSEMBLY COMPLETEO 5L 7KG	15	4408030113	HEAD CONNECTOR BODY + VITON
6	* 4408031114	ELECTROMAGNET 5L 10KG	15	4408030114	HEAD CONNECTOR BODY + SILICON
6	* 4408030517	ELECTROMAGNET 10L 5KG	16	4408032308	DRAIN PLUG
7	4408030028	TOUCH SCREEN PANEL PH-RX/M	17	4408031203	PURGE FITTING
8	4408032303	PUMP SUPPORT 2009	18	4408031205	COMPLETE HEAD ASSEMBLY
9	4408032603	FEMALE CONNECTOR BCN EXACTUS 2009	19	4408030115	DUTRAL VALVE + SUPPORT
10	* 4408030531	PISTON WASHER 5L 7KG	19	4408030116	VITON VALVE + SUPPORT
10	* 4408031119	PISTON WASHER 2L 5KG - 2L 10KG - 5L 10KG	19	4408030117	SILICON VALVE + SUPPORT

* -> SEE OBSERVATIONS SHEET

CODE **57168, 57169, 57170, 57892, 57893, 57894**

DESCRIPTION: **EXACTUS PUMP PH-RX/M**

10	* 4408031121	PISTON WASHER 10L 5KG	20	4408030126	SUCTION TUBE NUT
21	57174R0001	EXACTUS PUMP BOX			

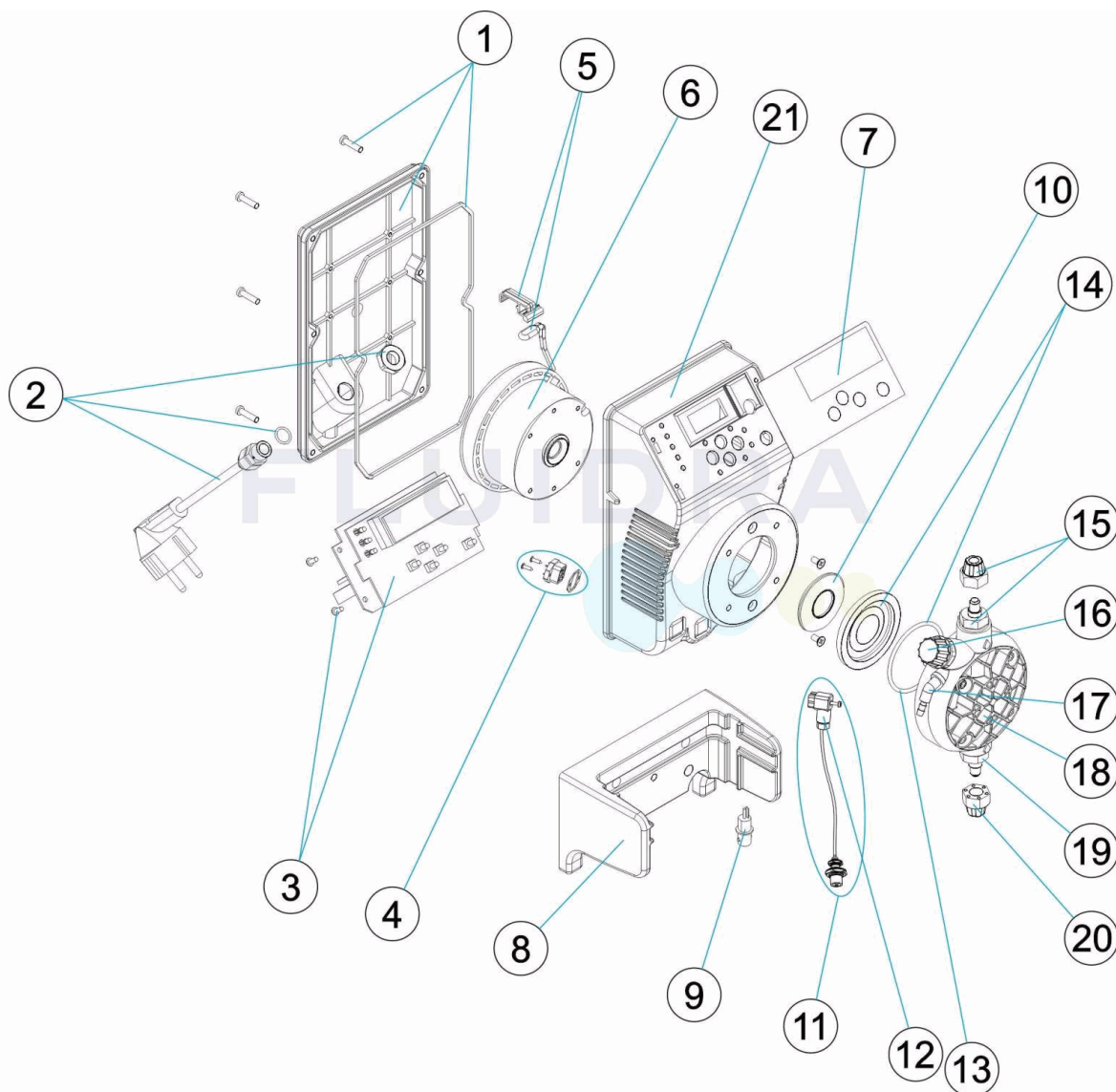
CODE **57168, 57169, 57170, 57892, 57893, 57894**

DESCRIPTION: **EXACTUS PUMP PH-RX/M**

OBSERVATIONS

POS	CODE	OBSERVATIONS
4	4408031217	FOR: 57892, 57893, 57894
6	4408030118	FOR: 57168, 57892
6	4408031114	FOR: 57169, 57893
6	4408030517	FOR: 57170, 57894
10	4408030531	FOR: 57168, 57892
10	4408031119	FOR: 57169, 57893
10	4408031121	FOR: 57170, 57894
11	4408030062	FOR: 57892, 57893, 57894
12	4408031729	FOR: 57892, 57893, 57894

CODICE **57168, 57169, 57170, 57892, 57893, 57894**

 DESCRIZIONE: **POMPA EXACTUS PH-RX/M**

ITALIANO

POS	CODICE	DESCRIZIONE	POS	CODICE	DESCRIZIONE
1	4408030025	COPRIVENTOLA POMPA EXACTUS	11	* 4408030062	SONDA DI LIVELLO MA/MB
2	4408031221	CAVO DI ALIMENTAZIONE	12	* 4408031729	CONNETTORE DI LIVELLO
3	4408032602	CIRCUITO ELETTRONICO PH/RX. 2009	13	4408030111	O-RING PER TESTA
4	* 4408031217	CONNETTORE	14	4408030119	MEMBRANA COMPLETA
5	4408032305	SUPPORTO + TERMOSTATO 110°	15	4408030112	CORPO RACCORDO + VALVOLA IN DUTRAL
6	* 4408030118	ELETTROCALAMITA COMPLETA 5L 7KG	15	4408030113	CORPO RACCORDO + VALVOLA IN VITON
6	* 4408031114	ELETTROCALAMITA 5L 10KG	15	4408030114	CORPO RACCORDO + VALVOLA IN SILICONE
6	* 4408030517	ELETTROCALAMITA 10L 5KG	16	4408032308	TAPPO SPURGO
7	4408030028	PANNELLO DIGITALE PH-RX/M	17	4408031203	RACORDO SCARIO
8	4408032303	SUPPORTO POMPA EXACTUS 2009	18	4408031205	TESTA COMPLETA
9	4408032603	CONNETTORE FEMMINA BCN EXACTUS 2009	19	4408030115	VALVOLA DUTRAL + SUPPORTO
10	* 4408030531	RONDELLA PISTONE 5L 7KG	19	4408030116	VALVOLA + SUPPORTO
10	* 4408031119	RONDELLA PISTONE 2L 5KG - 2L 10KG - 5L 10KG	19	4408030117	VALVOLA SILICONE + SUPPORTO

* -> SI FACCIÀ RIFERIMENTO AL FOGLIO DELLE OSSERVAZIONI

CODICE **57168, 57169, 57170, 57892, 57893, 57894**

DESCRIZIONE: **POMPA EXACTUS PH-RX/M**

10	* 4408031121	RONDELLA PISTONE 10L 5KG	20	4408030126	GHIERA FISSAGGIO TUBO
21	57174R0001	CASSA POMPA EXACTUS			

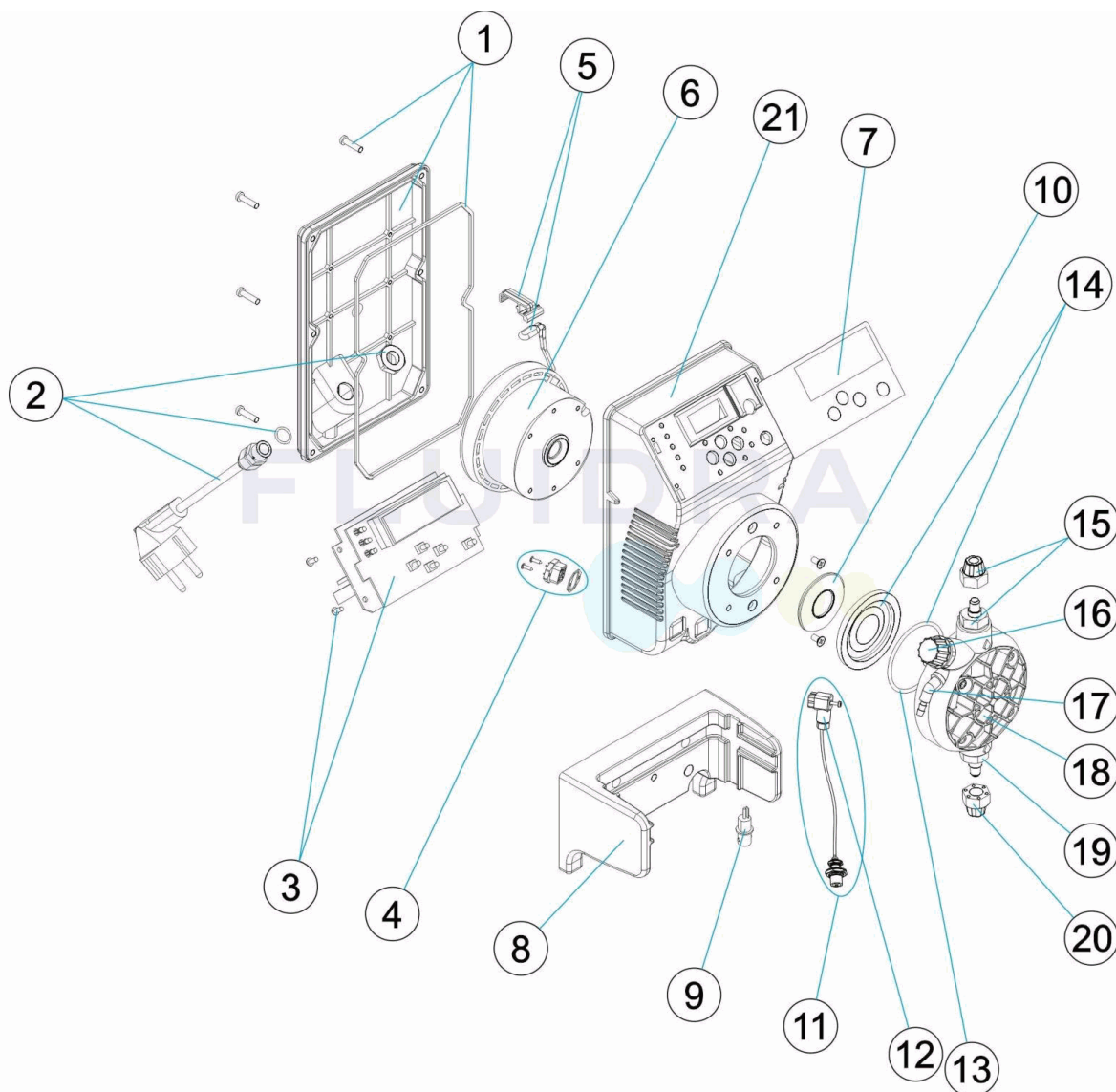
CODICE **57168, 57169, 57170, 57892, 57893, 57894**

DESCRIZIONE: **POMPA EXACTUS PH-RX/M**

OSSERVAZIONI

POS	CODICE	OSSERVAZIONI
4	4408031217	PER: 57892, 57893, 57894
6	4408030118	PER: 57168, 57892
6	4408031114	PER: 57169, 57893
6	4408030517	PER: 57170, 57894
10	4408030531	PER: 57168, 57892
10	4408031119	PER: 57169, 57893
10	4408031121	PER: 57170, 57894
11	4408030062	PER: 57892, 57893, 57894
12	4408031729	PER: 57892, 57893, 57894

CODE **57168, 57169, 57170, 57892, 57893, 57894**

 BESCHREIBUNG: **PUMPE EXACTUS PH-RX/M**

DEUTSCH

POS	CODE	BESCHREIBUNG	POS	CODE	BESCHREIBUNG
1	4408030025	ABDECKUNG HINTEN EXACTUS UND DICHTUNG	11	* 4408030062	FÜLLSTANDSENSOR MA/MB
2	4408031221	VERSORGUNGSKABEL	12	* 4408031729	VERBINDUNGSTÜCK FÜLLSTAND
3	4408032602	PLATINE SCHALTKREIS PH/RX. 230/240 V	13	4408030111	O-RING KOPFSTÜCK
4	* 4408031217	STECKKUPPLUNG	14	4408030119	KOMPLETTMEMBERAN
5	4408032305	HALTERUNG UND THERMOSTAT 110°	15	4408030112	VENTILSATZ MIT DUTRAL
6	* 4408030118	ELEKTROMAGNET KOMPLETT 5 L 7 KG	15	4408030113	VENTILSATZ MIT VITON
6	* 4408031114	ELEKTROMAGNET 5 L 10 KG	15	4408030114	VENTILSATZ MIT SILIKON
6	* 4408030517	ELEKTROMAGNET 10 L 5 KG	16	4408032308	ABLASSTOPFEN KOPFSTÜCK CP STD
7	4408030028	TOUCHSCREEN EXACTUS PH-RX/M	17	4408031203	GEWINDE ABLASS KOPFSTÜCK
8	4408032303	HALTERUNG EXACTUS 2009	18	4408031205	KOPFSTÜCK KOMPLETT
9	4408032603	ANSCHLUSSMUFFE BNC EXACTUS 2009	19	4408030115	VENTIL DUTRAL MIT HALTERUNG
10	* 4408030531	KOLBENSCHIEBE 5 L 7 KG	19	4408030116	VENTIL VITON MIT HALTERUNG
10	* 4408031119	KOLBENSCHIEBE 2 L 5 KG - 2 L 10 KG - 5 L 10 KG	19	4408030117	VENTIL SILIKON MIT HALTERUNG

* -> SIEHE ANMERKUNGSBLATT

CODE **57168, 57169, 57170, 57892, 57893, 57894**

BESCHREIBUNG: **PUMPE EXACTUS PH-RX/M**

10	* 4408031121	KOLBENSCHIEBE 10 L 5 KG	20	4408030126	MUTTER BEFESTIGUNG ROHR
21	57174R0001	GEHÄUSE EXACTUS			

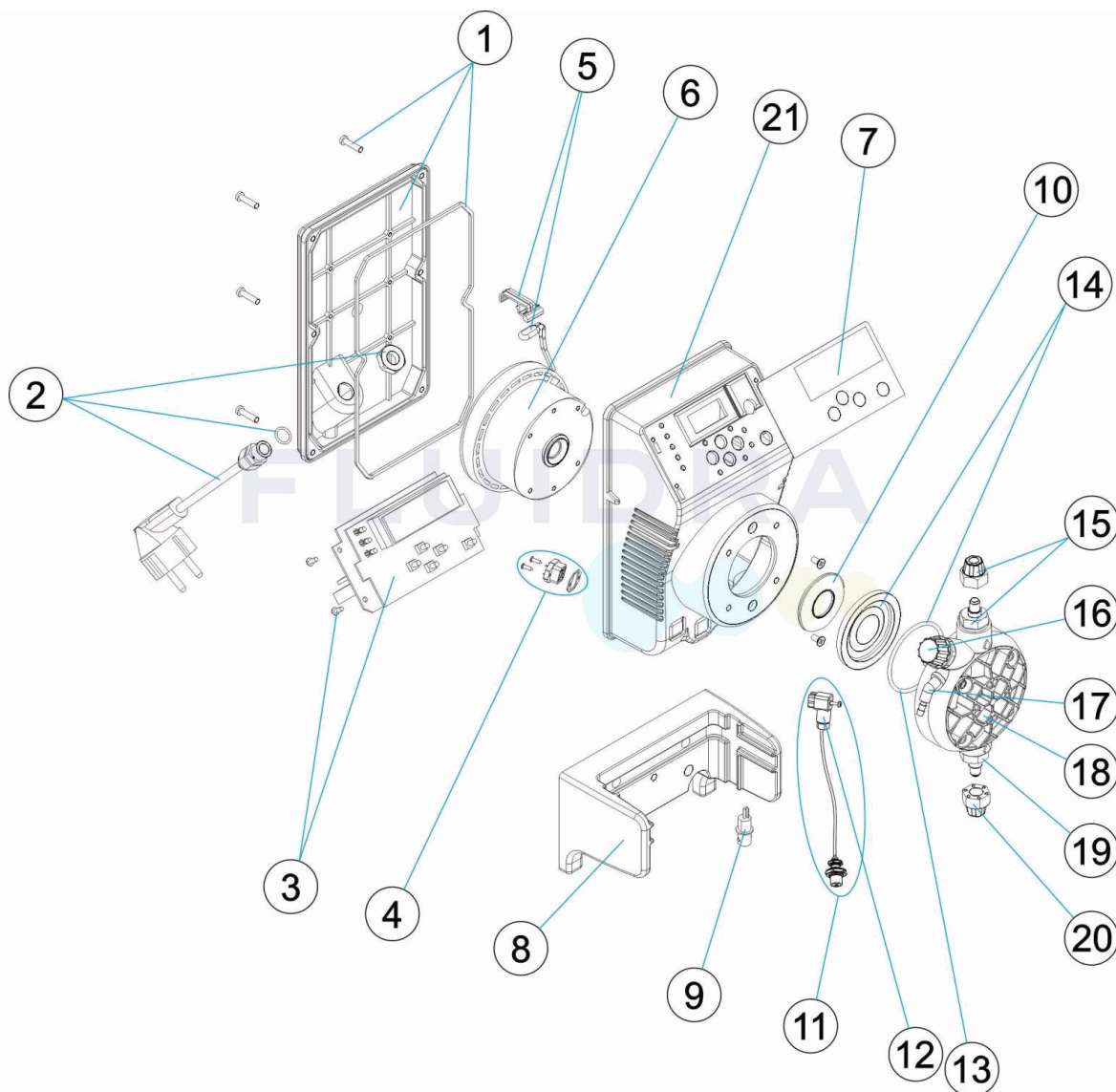
CODE **57168, 57169, 57170, 57892, 57893, 57894**

BESCHREIBUNG: **PUMPE EXACTUS PH-RX/M**

HINWEISE

POS	CODE	HINWEISE
4	4408031217	FÜR: 57892, 57893, 57894
6	4408030118	FÜR: 57168, 57892
6	4408031114	FÜR: 57169, 57893
6	4408030517	FÜR: 57170, 57894
10	4408030531	FÜR: 57168, 57892
10	4408031119	FÜR: 57169, 57893
10	4408031121	FÜR: 57170, 57894
11	4408030062	FÜR: 57892, 57893, 57894
12	4408031729	FÜR: 57892, 57893, 57894

CODIGO **57168, 57169, 57170, 57892, 57893, 57894**

 DESCRIÇÃO: **BOMBA EXACTUS PH-RX/M**

PORTUGUES

POS	CODIGO	DESCRIÇÃO	POS	CODIGO	DESCRIÇÃO
1	4408030025	TAMPA TRASEIRA BOMBA EXACTUS	11	* 4408030062	SONDA NÍVEL MA/MB
2	4408031221	CABO ALIMENTAÇÃO	12	* 4408031729	LIGAÇÃO NÍVEL
3	4408032602	CIRCUITO ELECTRONICO PH/RX. 2009	13	4408030111	JUNTA TORICA CABEÇAL
4	* 4408031217	LIGAÇÃO	14	4408030119	MEMBRANA COMPLETA
5	4408032305	SUPORTE MAIS TERMOSTATO DE 110°	15	4408030112	CORPO RACORD + DUTRAL
6	* 4408030118	ELECTROIMAN COMPLETO 5L 7KG	15	4408030113	CORPO RACORD + VITON
6	* 4408031114	ELECTROIMAN 5L 10KG	15	4408030114	CORPO RACORD + SILICONE
6	* 4408030517	ELECTROIMAN 10L 5KG	16	4408032308	TAMPÃO PURGA
7	4408030028	PAINEL DIGITAL TÁCTIL PH-RX/M	17	4408031203	RACCORD PURGA
8	4408032303	SUPORTE BOMBA EXACTUS 2009	18	4408031205	CABEÇAL COMPLETO
9	4408032603	LIGAÇÃO FÊMEA BCN. EXACTUS 2009	19	4408030115	VÁLVULA DUTRAL + SUPORTE
10	* 4408030531	ANILHA PISTON 5L 7KG	19	4408030116	VÁLVULA VITON + SUPORTE
10	* 4408031119	ANILHA PISTON 2L 5KG - 2L 10KG - 5L 10KG	19	4408030117	VÁLVULA SILICONE + SUPORTE

* -> VEJA A FICHA DE OBSERVAÇÕES

CODIGO **57168, 57169, 57170, 57892, 57893, 57894**

DESCRIÇÃO: **BOMBA EXACTUS PH-RX/M**

10	* 4408031121	ANILHA PISTON 10L 5KG	20	4408030126	PORCA SUJEIÇÃO TUBO
21	57174R0001	CAIXA BOMBA EXACTUS			

CODIGO **57168, 57169, 57170, 57892, 57893, 57894**

DESCRIÇÃO: **BOMBA EXACTUS PH-RX/M**

OBSERVAÇÕES

POS	CODIGO	OBSERVAÇÕES
4	4408031217	PARA: 57892, 57893, 57894
6	4408030118	PARA: 57168, 57892
6	4408031114	PARA: 57169, 57893
6	4408030517	PARA: 57170, 57894
10	4408030531	PARA: 57168, 57892
10	4408031119	PARA: 57169, 57893
10	4408031121	PARA: 57170, 57894
11	4408030062	PARA: 57892, 57893, 57894
12	4408031729	PARA: 57892, 57893, 57894