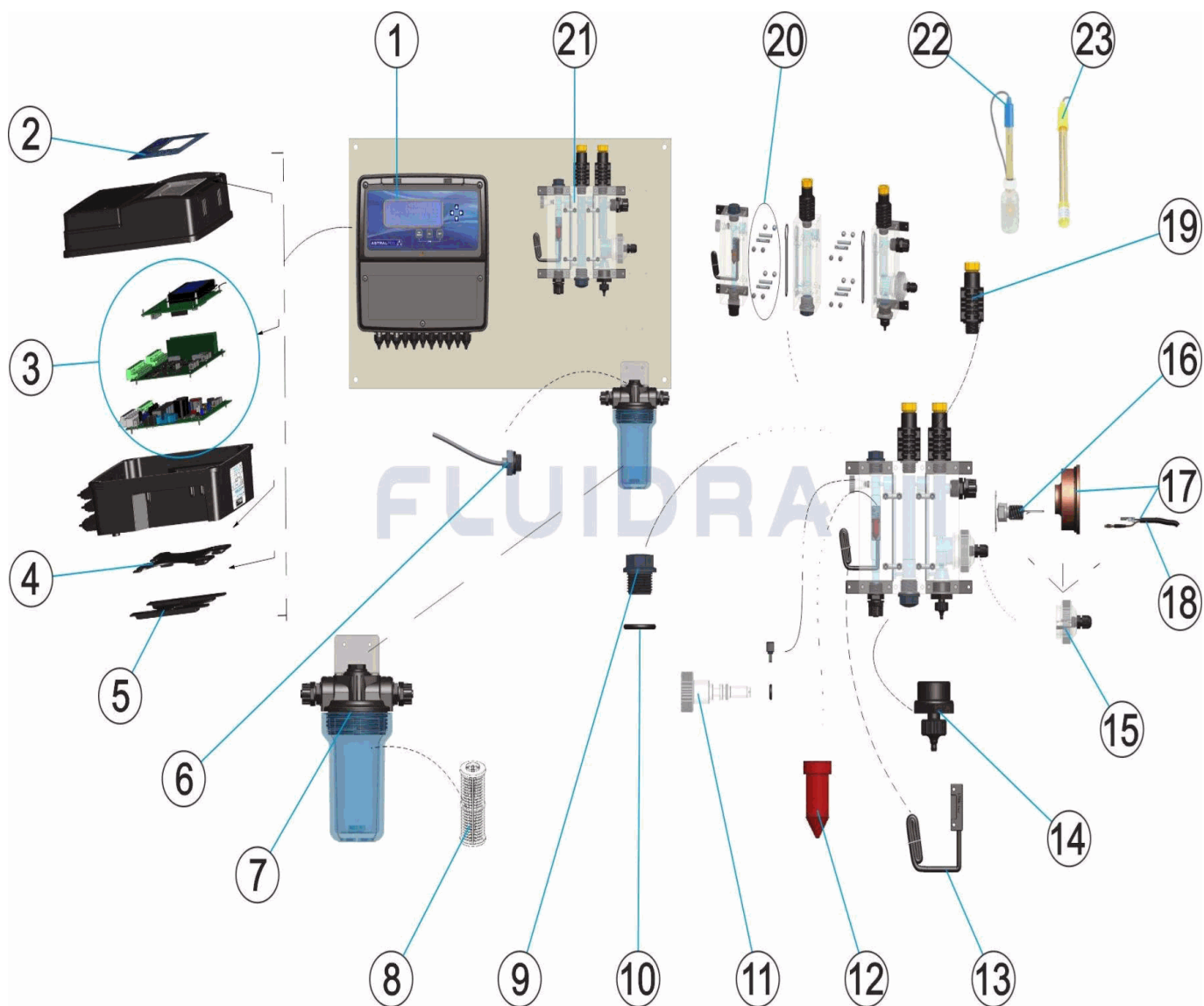
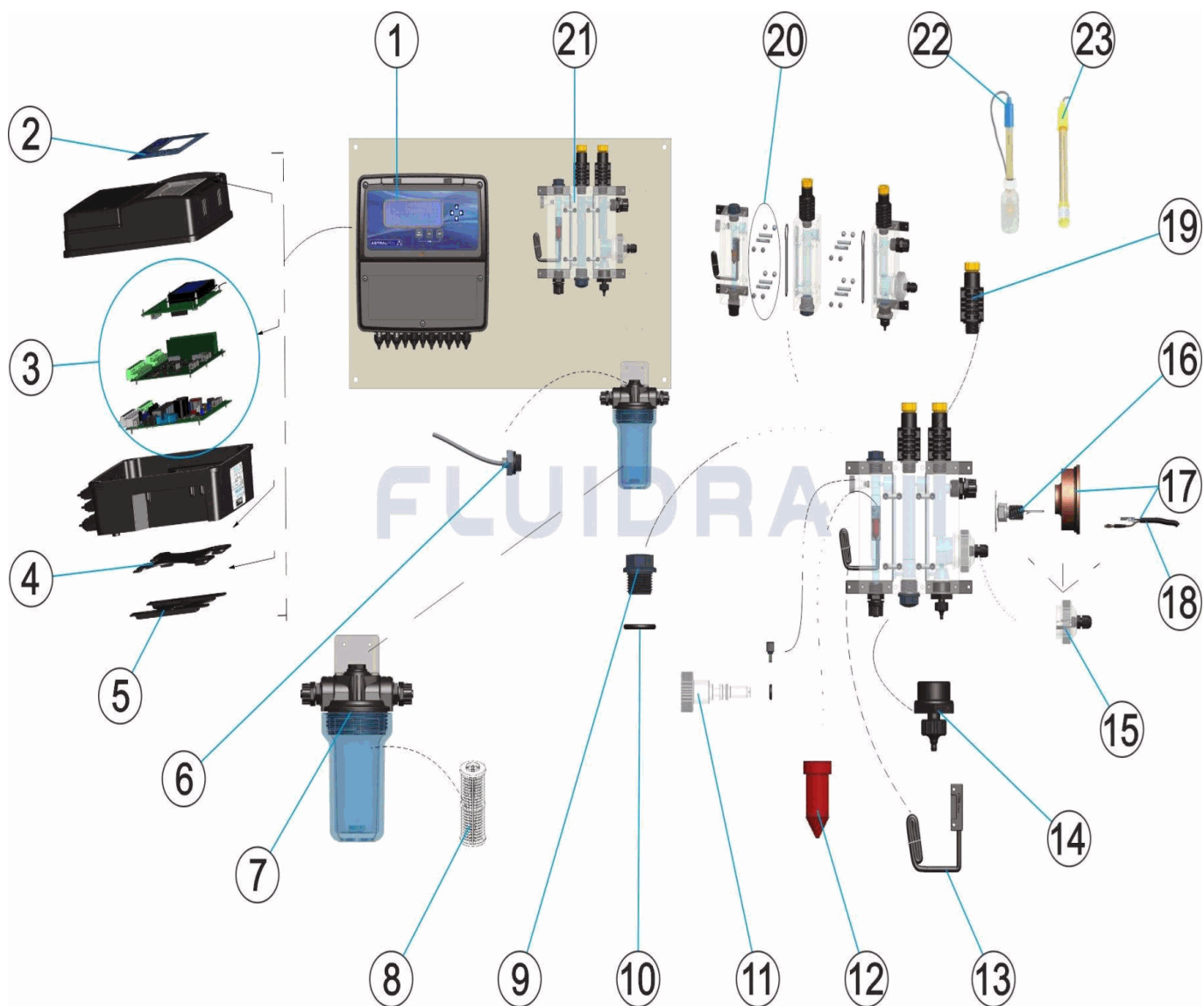


CODIGO **57143**

 DESCRIPCION: **CONTROLLER 4 PLUS PH-RX-CL NEGRO**

ESPAÑOL

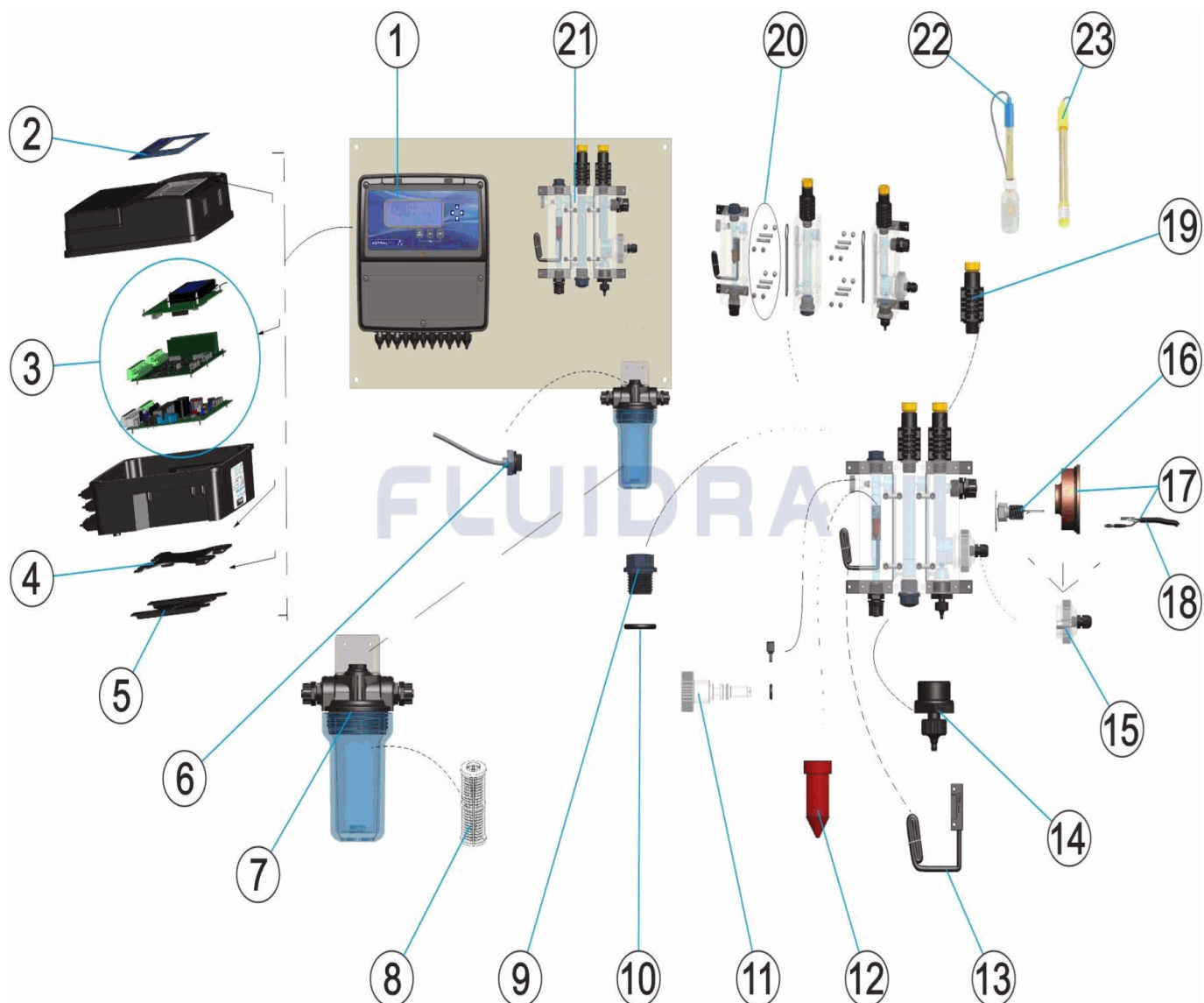
| POS | CODIGO | DESCRIPCION | POS | CODIGO | DESCRIPCION |
|-----|------------|--------------------------------------|-----|------------|-------------------------------|
| 1 | 57143R0100 | CENTRALITA KONTROL 800 PH-RX-CL | 13 | 27354R0030 | SENSOR DE FLUJO CON CABLE |
| 2 | 57142R0001 | CARATULA K800 ASTRAL POOL | 14 | 57142R0009 | VALVULA PURGA |
| 3 | 57143R0001 | CIRCUITOS MANIBRA PH-RX-CL | 15 | 57142R0011 | CUERPO TRANSPARENTE CLORADOR |
| 4 | 57142R0002 | SOPORTE CAJA CONTROL K800 | 16 | 27354R0005 | ELECTRODO PT |
| 5 | 36002R0008 | PIE BOMBA | 17 | 27354R0020 | ELECTRODO DE COBRE REPUESTO |
| 6 | 57142R0003 | SONDA DE TEMPERATURA | 18 | 53983R0022 | CABLE AMPEROMETRICO |
| 7 | 57142R0004 | CJTO. FILTRO | 19 | 27883R0009 | PORTASONDAS EN PVC MAXIMA TEM |
| 8 | 27354R0019 | FILTRO LAVABLE | 20 | 57142R0010 | TORNILLOS DE UNION |
| 9 | 57142R0006 | TUERCA CONEXION 1/2" PV " | 21 | 57143R0000 | PROVETA PH-RX- CL |
| 10 | 57142R0007 | JUNTA TORICA | 22 | 36004 | ELECTRODO DE PH |
| 11 | 57142R0008 | REGULADOR DE CAUDAL | 23 | 36005 | ELECTRODO DE RX |
| 12 | 27357R0002 | FLOTADOR ROJO IMANTADO SERIE KONTROL | | | |

CODE **57143**

 DESCRIPTION: **CONTROLLER 4 PLUS PH-RX-CL NOIR**

FRANCAIS

| POS | CODE | DESCRIPTION | POS | CODE | DESCRIPTION |
|-----|------------|--|-----|------------|---------------------------------|
| 1 | 57143R0100 | BOÎTIER DE COMMANDE KONTROL 800 PH-CL-RX | 13 | 27354R0030 | CAPTEUR DE DÉBIT AVEC CÂBLE |
| 2 | 57142R0001 | CACHE K800 ASTRAL POOL | 14 | 57142R0009 | VANNE DE PURGE |
| 3 | 57143R0001 | CIRCUITS DE MANŒUVRE PH-RX-CL | 15 | 57142R0011 | CORPS TRANSPARENT CHLORINATEUR |
| 4 | 57142R0002 | SUPPORT BOÎTIER DE COMMANDE K800 | 16 | 27354R0005 | ÉLECTRODE PT |
| 5 | 36002R0008 | BASE POMPE | 17 | 27354R0020 | ÉLECTRODE EN CUIVRE DE RECHANGE |
| 6 | 57142R0003 | SONDE DE TEMPÉRATURE | 18 | 53983R0022 | CÂBLE AMPÉROMÉTRIQUE |
| 7 | 57142R0004 | ENS. FILTRE | 19 | 27883R0009 | SUPPORT ELECTRODE |
| 8 | 27354R0019 | FILTRE LAVABLE | 20 | 57142R0010 | VIS DE FIXATION |
| 9 | 57142R0006 | ÉCROU CONNEXION 1/2' PVC | 21 | 57143R0000 | CYLINDRE PH-RX-CL |
| 10 | 57142R0007 | JOINT TORIQUE | 22 | 36004 | ELECTRODE DE PH |
| 11 | 57142R0008 | RÉGULATEUR DE DÉBIT | 23 | 36005 | ELECTRODE DE RX |
| 12 | 27357R0002 | FLOTTEUR ROUGE AIMANTÉ SÉRIE KONTROL | | | |

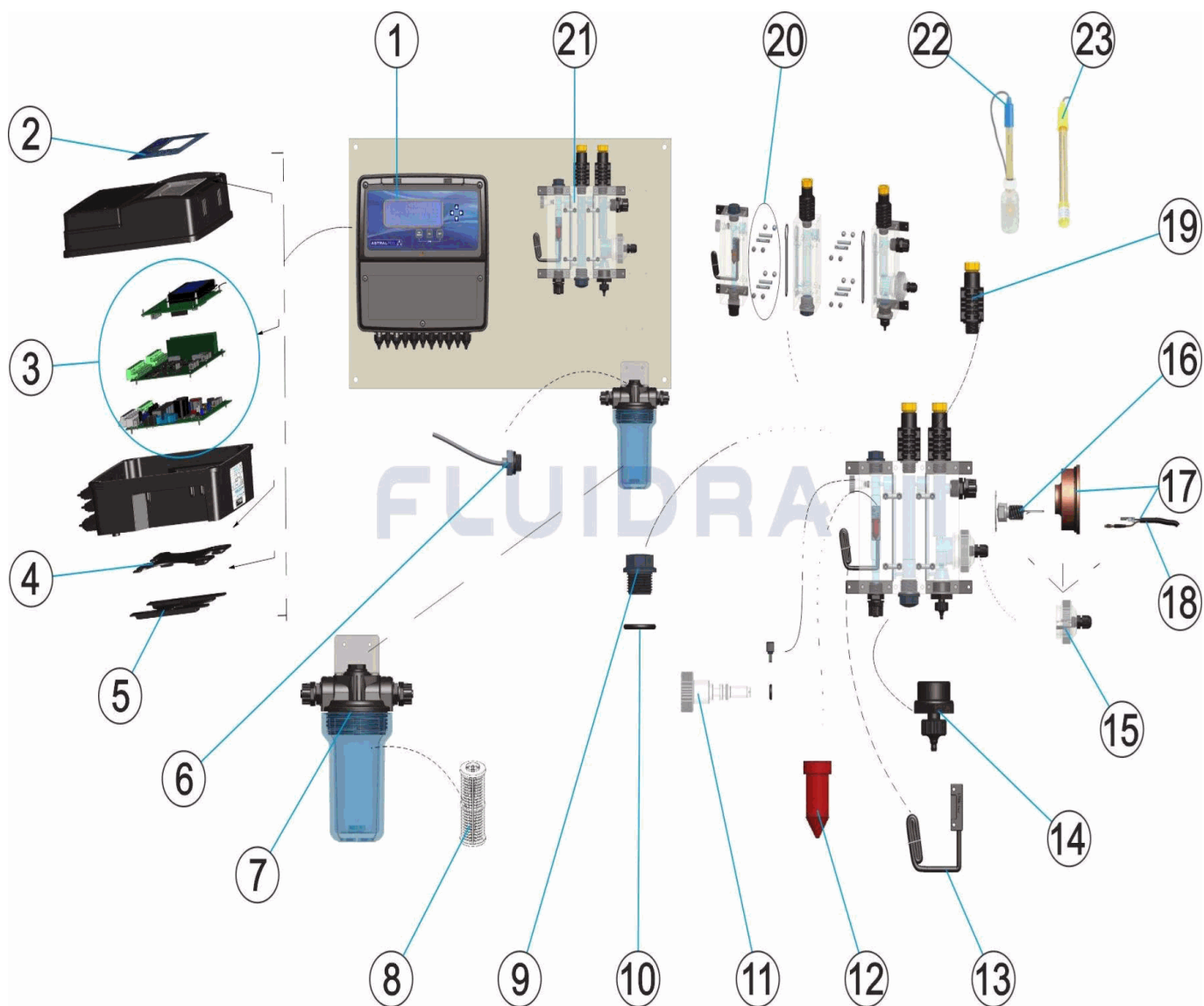
CODE **57143**

 DESCRIPTION: **CONTROLLER 4 PLUS PH-RX-CL BLACK**


ENGLISH

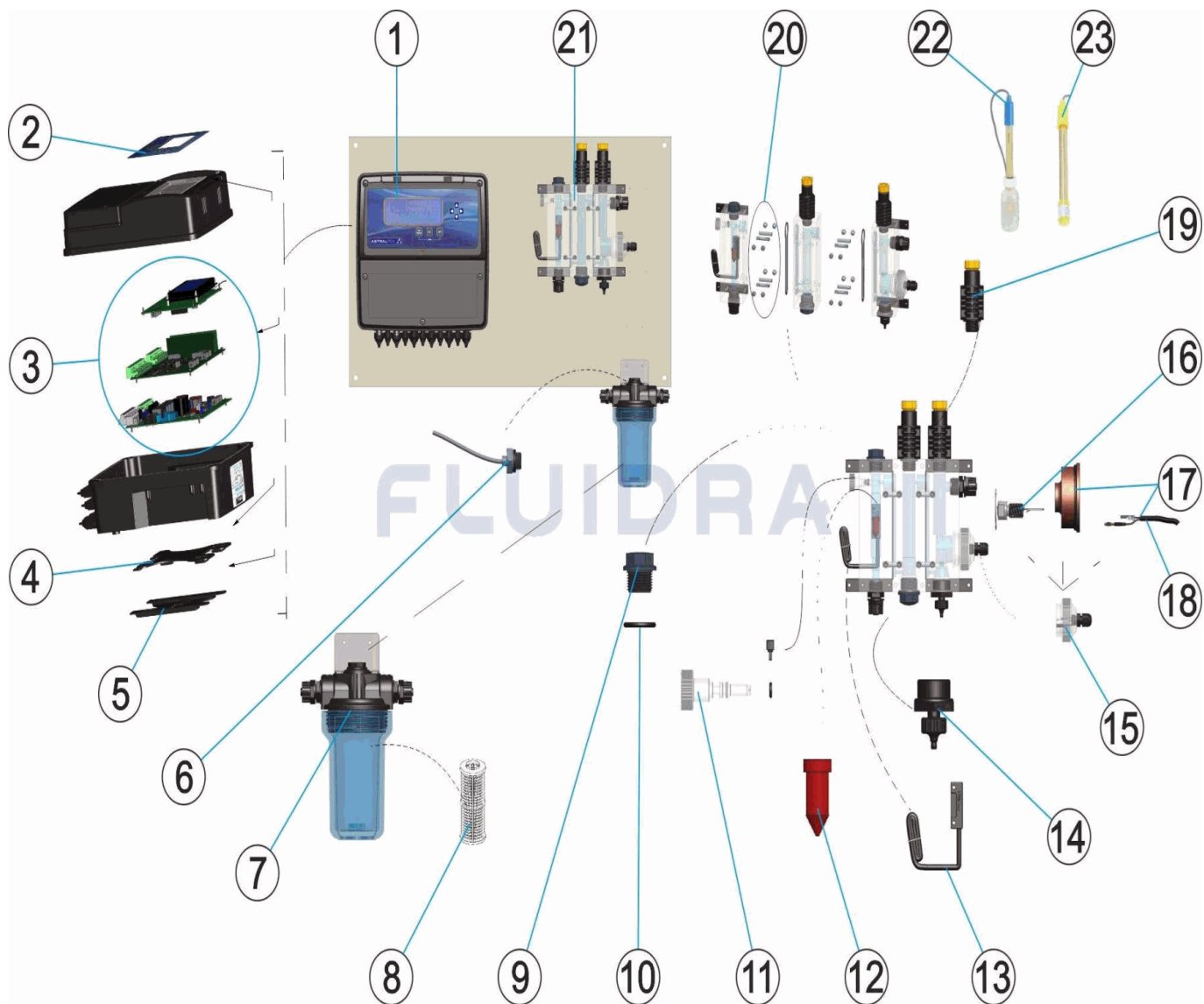
| POS | CODE | DESCRIPTION | POS | CODE | DESCRIPTION |
|-----|------------|---|-----|------------|-------------------------------------|
| 1 | 57143R0100 | KONTROL 800 PH-RX-CL ASTRAL | 13 | 27354R0030 | FLOW SENSOR WITH CABLE |
| 2 | 57142R0001 | FACE PANEL K800 ASTRAL POOL | 14 | 57142R0009 | PURGE VALVE |
| 3 | 57143R0001 | ELECTRICAL MAINBOARD KONTROL 800 PH-RX-CL | 15 | 57142R0011 | CHLORINE TRANSPARENT BODY |
| 4 | 57142R0002 | BRACKET CONTROL BOX K800 | 16 | 27354R0005 | PT ELECTRODE |
| 5 | 36002R0008 | PUMP BASE | 17 | 27354R0020 | SPARE COPPER ELECTRODE |
| 6 | 57142R0003 | TEMPERATURA PROBE | 18 | 53983R0022 | CHLORINE CABLE |
| 7 | 57142R0004 | FILTER KIT | 19 | 27883R0009 | ELECTRODE HOLDER |
| 8 | 27354R0019 | WASHABLE FILTER | 20 | 57142R0010 | METALLIC CONNECTIONS |
| 9 | 57142R0006 | CONNECTION NUT 1/2" PV " | 21 | 57143R0000 | MODULAR PROBE HOLDERPH AND PH-RX-CL |
| 10 | 57142R0007 | O-RING | 22 | 36004 | PH ELECTRODE |
| 11 | 57142R0008 | FLOW REGULATOR | 23 | 36005 | RX ELECTRODE |
| 12 | 27357R0002 | KONTROL SERIES RED MAGNETIC FLOAT | | | |

CODICE **57143**

 DESCRIZIONE: **CONTROLLER 4 PLUS PH-RX-CL NERO**

ITALIANO

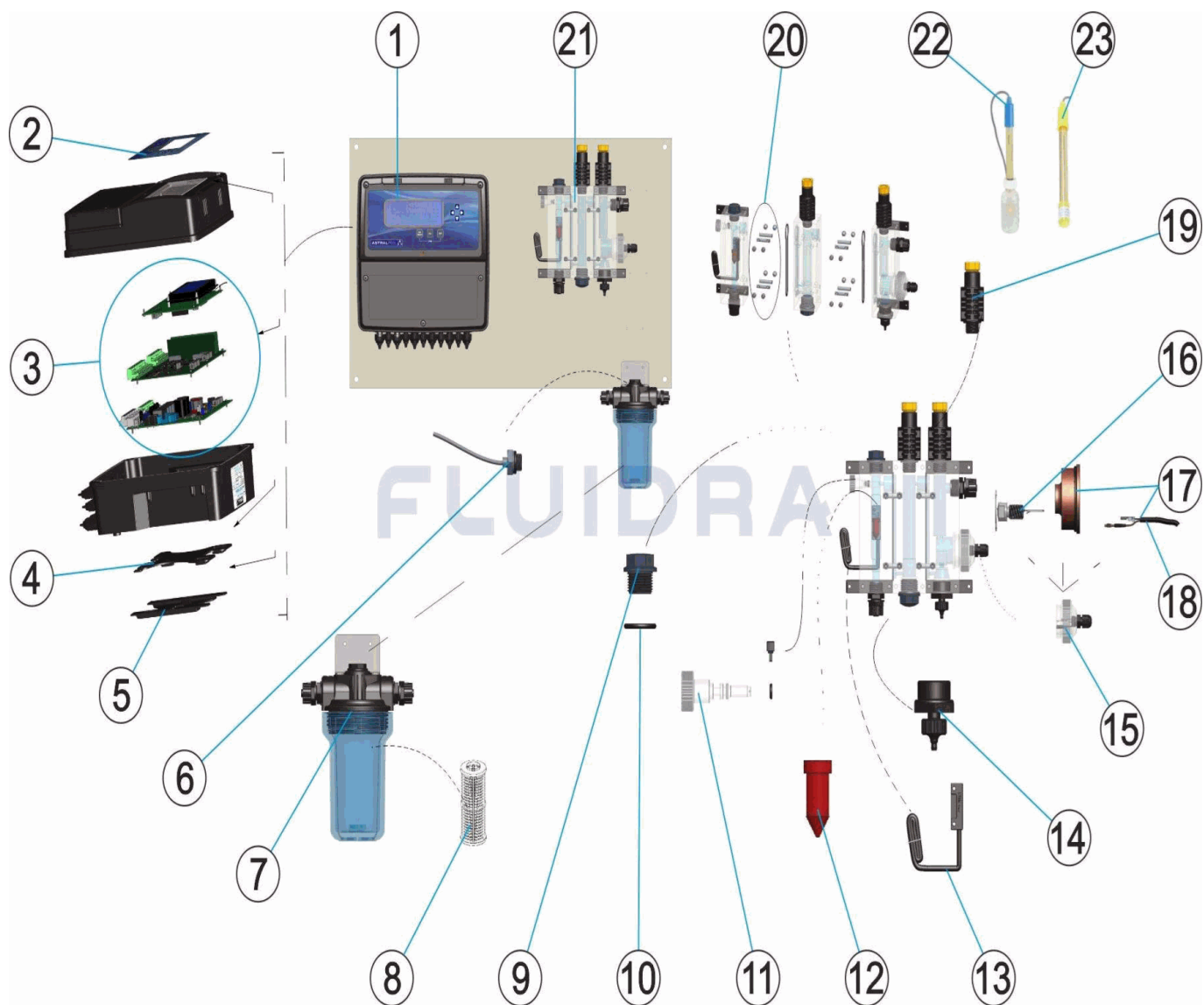
| POS | CODICE | DESCRIZIONE | POS | CODICE | DESCRIZIONE |
|-----|------------|--|-----|------------|-----------------------------|
| 1 | 57143R0100 | CENTRALINA KONTROL 800 PH-CL-RX | 13 | 27354R0030 | SENSORE DI FLUSSO CON CAVO |
| 2 | 57142R0001 | MASCHERINA K800 ASTRAL POOL | 14 | 57142R0009 | VALVOLA SPURGO |
| 3 | 57143R0001 | CIRCUITI DI MANOVRA PH-RX-CL | 15 | 57142R0011 | CORPO TRASPARENTE CLORATORE |
| 4 | 57142R0002 | SUPPORTO CASSA CONTROLLO K800 | 16 | 27354R0005 | ELETTRODO PT |
| 5 | 36002R0008 | PIEDE POMPA | 17 | 27354R0020 | ELETTRODO DI RAME RICAMBIO |
| 6 | 57142R0003 | SONDA DI TEMPERATURA | 18 | 53983R0022 | CAVO AMPEROMETRICO |
| 7 | 57142R0004 | INSIEME FILTRO | 19 | 27883R0009 | SUPPORTO ELETTRODO |
| 8 | 27354R0019 | FILTRO LAVABILE | 20 | 57142R0010 | VITI DI UNIONE |
| 9 | 57142R0006 | DADO CONNESSIONE 1/2" PV " | 21 | 57143R0000 | CILINDRO PH-RX-CL |
| 10 | 57142R0007 | GIUNTA TORICA | 22 | 36004 | ELETTRODO DI PH |
| 11 | 57142R0008 | REGOLATORE DI CAUDALE | 23 | 36005 | ELETTRODO DI RX |
| 12 | 27357R0002 | GALLEGGIANTE ROSSO MAGNETICO SERIE KONTF | | | |

CODE **57143**

 BESCHREIBUNG: **CONTROLLER 4 PLUS PH-RX-CL SCHWARZ**

DEUTSCH

| POS | CODE | BESCHREIBUNG | POS | CODE | BESCHREIBUNG |
|-----|------------|--------------------------------|-----|------------|------------------------------------|
| 1 | 57143R0100 | STEUERUNG KONTROL 800 PH-RX-CL | 13 | 27354R0030 | DURCHFLUSSMESSER MIT KABEL |
| 2 | 57142R0001 | BEDIENFELD K800 ASTRAL POOL | 14 | 57142R0009 | ABLASSVENTIL |
| 3 | 57143R0001 | STEUERPLATINE PH-RX-CL | 15 | 57142R0011 | CHLORER GEHÄUSE TRANSPARENT |
| 4 | 57142R0002 | HALTERUNG STEUERSCHRANK K800 | 16 | 27354R0005 | ELEKTRODE PT |
| 5 | 36002R0008 | PUMPENFUSS | 17 | 27354R0020 | ELEKTRODE KUPFER ERSATZ |
| 6 | 57142R0003 | TEMPERATURSONDE | 18 | 53983R0022 | KABEL AMPEREMETRISCH |
| 7 | 57142R0004 | FILTERSET | 19 | 27883R0009 | SONDENHALTERUNG AUS PVC MAXIMA TEM |
| 8 | 27354R0019 | FILTER WASCHBAR | 20 | 57142R0010 | VERBINDUNGSSCHRAUBEN |
| 9 | 57142R0006 | ANSCHLUSSMUTTER 1/2" PV " | 21 | 57143R0000 | PRÜFSTAB PH-RX - CL |
| 10 | 57142R0007 | O-RING | 22 | 36004 | ELEKTRODE PH |
| 11 | 57142R0008 | DURCHFLUSSREGLER | 23 | 36005 | ELEKTRODE RX |
| 12 | 27357R0002 | SCHWIMMER ROT SERIE KONTROL | | | |

CODIGO **57143**

 DESCRIÇÃO: **CONTROLLER 4 PLUS PH-RX-CL PRETO**

PORTUGUES

| POS | CODIGO | DESCRIÇÃO | POS | CODIGO | DESCRIÇÃO |
|-----|------------|---|-----|------------|---------------------------------|
| 1 | 57143R0100 | UNIDADE DE CONTROLO CENTRAL KONTROL 800 F | 13 | 27354R0030 | SENSOR DE FLUXO COM CABO |
| 2 | 57142R0001 | PAINEL K800 ASTRAL POOL | 14 | 57142R0009 | VÁLVULA DE PURGA |
| 3 | 57143R0001 | CIRCUITOS DE CONTROLO PH-RX-CL | 15 | 57142R0011 | CORPO TRANSPARENTE CLORADOR |
| 4 | 57142R0002 | SUPORTE CAIXA CONTROLO K800 | 16 | 27354R0005 | ELÉCTRODO PT |
| 5 | 36002R0008 | BASE BOMBA | 17 | 27354R0020 | ELÉTRODO DE COBRE SOBRESSELENTE |
| 6 | 57142R0003 | SONDA DE TEMPERATURA | 18 | 53983R0022 | CABO AMPERIMÉTRICO |
| 7 | 57142R0004 | CJTO. FILTRO | 19 | 27883R0009 | SUPORTE ELECTRODO |
| 8 | 27354R0019 | FILTRO LAVÁVEL | 20 | 57142R0010 | PARAFUSO DE FIXAÇÃO |
| 9 | 57142R0006 | PORCA CONEXÃO 1/2" PV " | 21 | 57143R0000 | CILINDRO PH-RX-CL |
| 10 | 57142R0007 | JUNTA TÓRICA (6 UT) | 22 | 36004 | SONDA PH |
| 11 | 57142R0008 | REGULADOR DE CAUDAL | 23 | 36005 | SONDA RX |
| 12 | 27357R0002 | BOIA VERMELHA MAGNETIZADA SÉRIE KONTROL | | | |