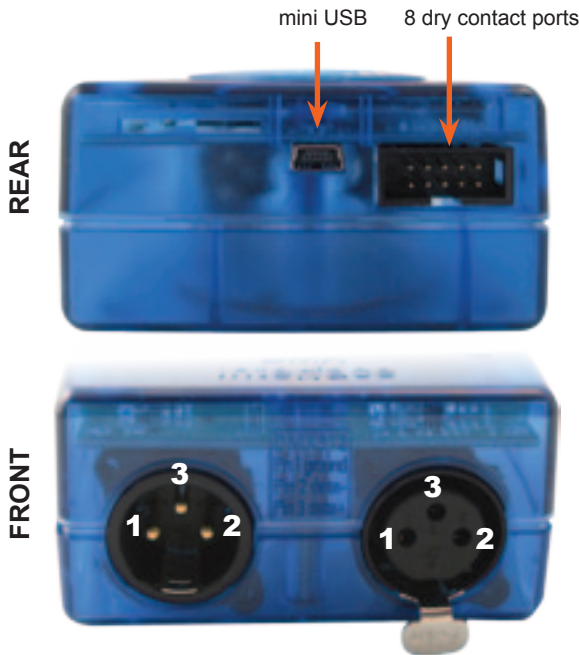


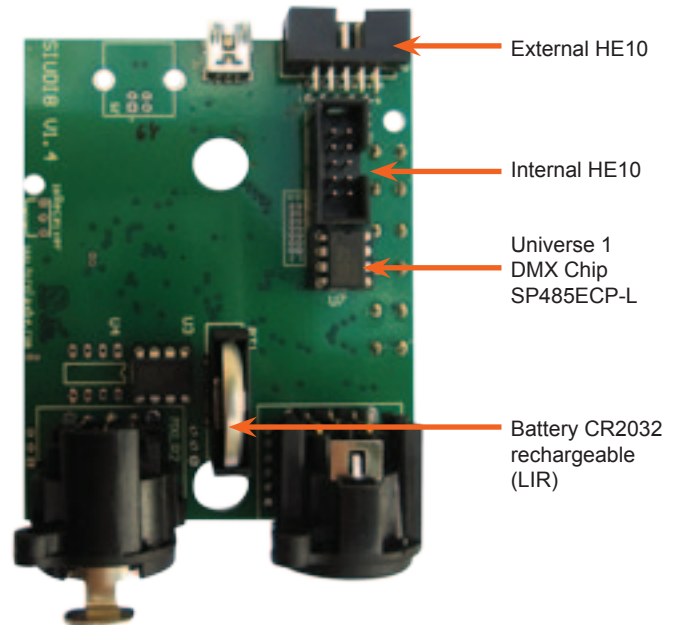
## DMX Live control and Stand Alone controller

- USB connection
- Up to 2 DMX512 universes
- 128k flash memory for storing stand alone programs
- 8 dry contact trigger ports via HE10 connector
- clock & calendar triggering function
- stand alone mode with 1 zone and 255 scenes



Universe #2*	Universe #1
1 DMX2 ground	1 DMX1 ground
2 DMX2 data-	2 DMX1 data-
3 DMX2 data+	3 DMX1 data+

\*not compatible with SLESA-U8



## SPECIFICATIONS

<b>Package</b>	Interface, cdrom, usb cable
<b>OS Requirement</b>	Mac OSx 10.6/10.7/10.8 - Windows XP/VISTA/SEVEN/8 32/64 bits and USB 2.0
<b>Colors</b>	Blue, Orange, Gray, Green, Marine, White, Red
<b>Connections</b>	XLR3, mini USB, 2 HE10, battery
<b>Power</b>	Power From 5V to 5.5V DC (AC/DC adapter in option, ref: POWER1_EU)
<b>Certifications</b>	EC, EMC, ROHS, ETL, UL (some are in progress)
<b>Interface</b>	79x92x43 mm 120g
<b>Package</b>	140x135x50 mm 340g
<b>Use</b>	Environnement IP20 Temperature 0°C to 50°C
<b>Buttons</b>	2 buttons to change scene (previous/next) + 1 button to change dimmer

### External HE10



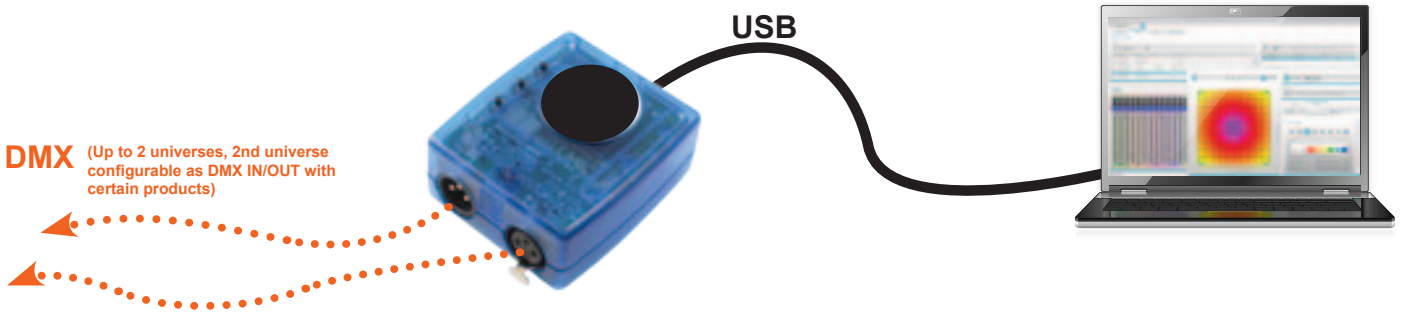
P1 PORT 1	P6 PORT 6
P2 PORT 2	P7 PORT 7
P3 PORT 3	P8 PORT 8
P4 PORT 4	GND Ground
P5 PORT 5	

### Internal HE10

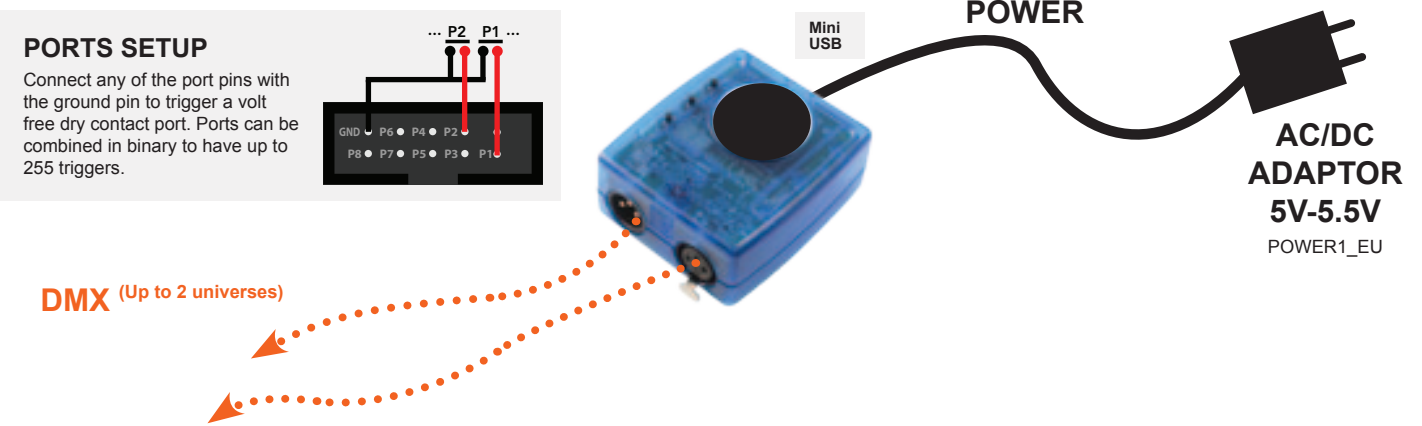


1 Ground	6 NEXT
2 Dimmer	7 Zone
3 DMX1+	8 LED DMX
4 PREVIOUS	9 VUSB
5 DMX1-	10 LED USB

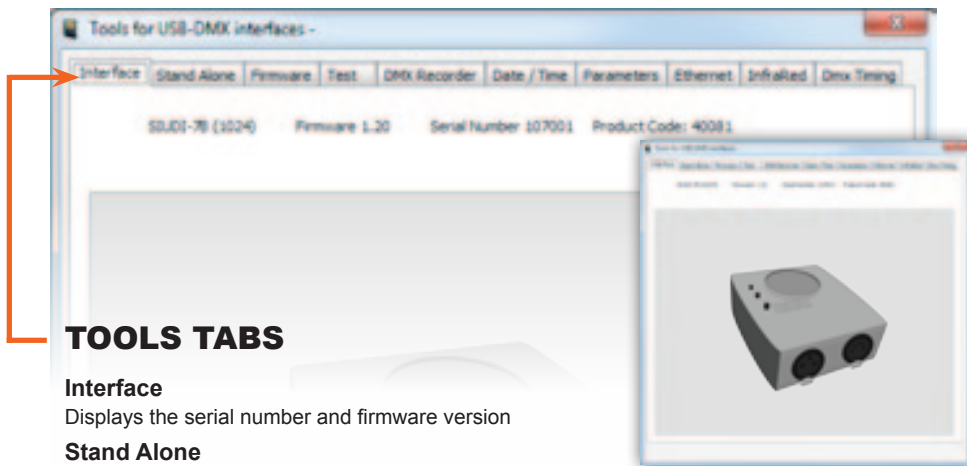
# LIVE USE WITH COMPUTER



# STAND ALONE USE



# SOFTWARE TOOLS.EXE to set parameters



**TOOLS TABS**

- Interface**  
Displays the serial number and firmware version
- Stand Alone**  
Set the interface to stand alone mode
- Firmware**  
Write the latest firmware
- Test**  
Test DMX outputs and ports
- Date / Time**  
Set date, time, and location coordinates

- Parameters**  
Adjust special parameters
- Dmx Timing**  
Adjust DMX output signal

- Easy Stand Alone software\* (PC)
  - ESA2 software\* (PC & Mac)
  - Sunlite Suite 2 (PC, works only with SUITE2-EC versions)
- \* SLESA-U8 limited to 1 universe