



H I G H - T E C H P O O L S





SPAIN | more projects on p.18

About SkyPool.

PANEL POOLS, THE VERY LATEST TECHNOLOGY THAT ENSURES PRECISION AND ACCURACY.



The easiest, quickest and surest way of building any required residential and commercial pool. SkyPool is AstralPool's range of prefabricated panel pools that can be adapted to fit existing infrastructures or new ones.

The use of these totally prefabricated panels that are easy to fasten and assemble together means that an in-ground or above-ground pool can be built in record time.

The steel panels undergo hot-dip galvanisation in a bath of zinc, which gives them excellent protection against rusting so that they last longer and their safety is guaranteed throughout their service life.



Overflow channel.

Totally modular.
Can be configured to fit different grating and tile sizes.

Reinforced brackets.

The brackets are adjustable and allow a pool to be correctly assembled right down to the last millimetre.

Reinforced supports.

For greater stability of the panels.

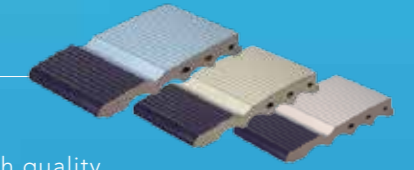
Support system.

The support system enables the panels to be firmly fastened to the ground.

Ceramic tiles*.

Range of ceramic tiling for the overflow channel, with a high quality, non-slip finish.

* Tiling not built in to the panels.



Hot-dipped galvanised steel.

The steel panels undergo hot-dip galvanisation in a bath of zinc, which gives them excellent protection against rusting so that they last longer and their safety is guaranteed throughout their service life.

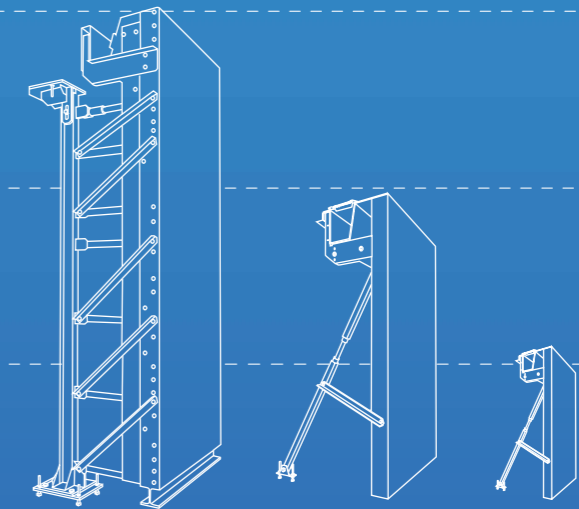
Liner coating*.

Made of reinforced PVC-P.

* Liner not built in to the panels.



RANGE OF PANELS FROM 0,80 TO 3 METRES



SkyPool, experts in end-to-end solutions

Thanks to SkyPool, AstralPool is the undisputed world leader in prefabricated pools made of galvanised steel panels. Our flexibility and drive, in addition to the way we adapt to the needs and regulations of each market have led us to build pools in more than 60 countries, which has made us one of the companies with the greatest international outreach in the sector.

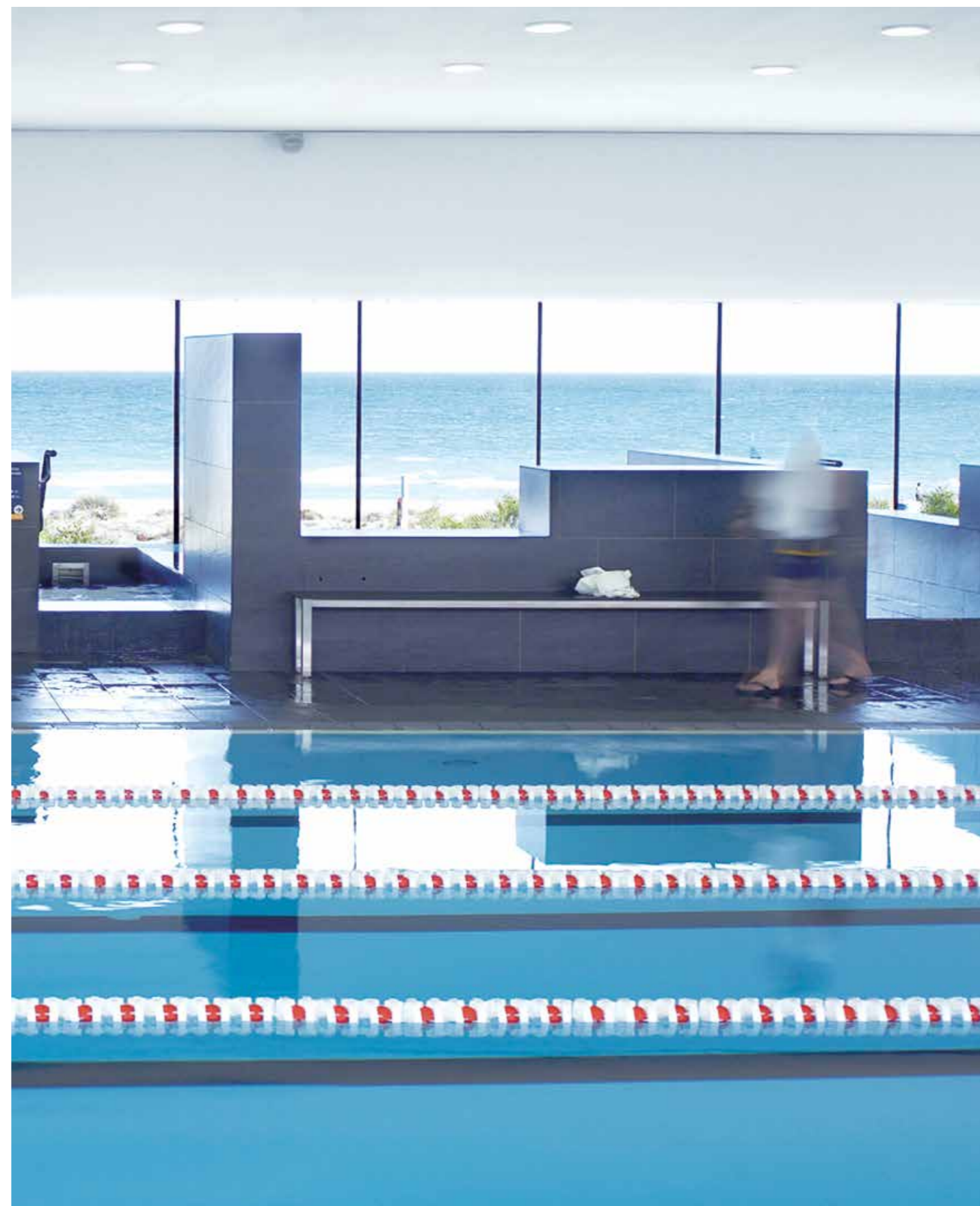
Award-winning competition pools.

As leaders in this sector, we have longstanding experience in the development of solutions for the world of competition. We make pools of any size including the required by FINA standards and regulations.

End-to-end solutions.

AstralPool has a multidisciplinary team able to give you support in the development of your project from beginning to end, as well as the degree of experience and know-how expected of a world leader:

- Project analysis.
- Preliminary design study and quote.
- Advice and water treatment.
- Manufacture.
- Worksite management.
- Installation of complete solutions.



SPAIN | more projects on p. 18

SkyPool is the best choice for many reasons.



Quick

The use of completed prefabricated components together with the easy assembly system considerably reduces the time required to build a pool.



Long-lasting

New design and manufacturing systems are used to obtain maximum quality, functionality and durability of all pool components. The metal structure has a 20-year warranty.



Reliable

The use of the very best components, together with a totally safe construction system, delivers the reliability required in this type of facility.



Versatile

This system can be used for any design, whatever a pool's shape.



Lightweight

Choose a place and we'll build a pool there! The advantage of the lightweight structure that is easily adaptable is that pools can be built even in awkward conditions. Small spaces, rooftops, stadiums, etc.



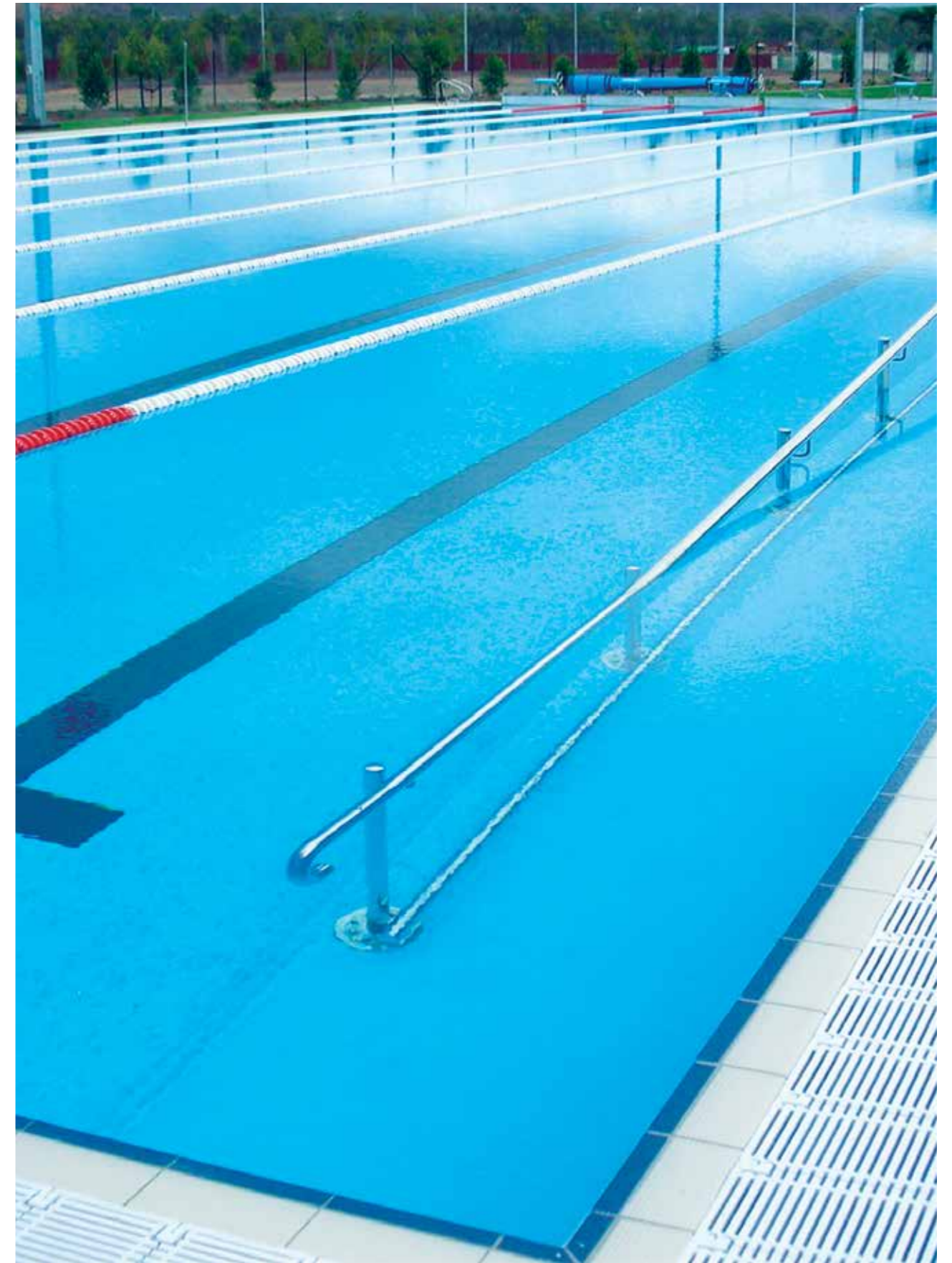
Sustainable

All components can be recycled, are non-contaminating and are manufactured using processes with a low environmental impact.



Inexpensive

As no complex infrastructure has to be built, a high performance pool can be obtained at a lower cost.



USA | more projects on p.18



Advantages of SkyPool.

1 Technology.

Thanks to the technology used in the construction of SkyPool panels, they are fully compliant with FINA regulations. There is an extremely easy and efficient system for adjusting the level and angles of a pool. The access through the system's manholes enables all adjustment to be made.

2 Watertight. No leaks.

There are no cracks. The perfect fit of the assembled SkyPool panels covered by the liner ensure the pool shell is completely watertight. Furthermore, the system has been designed to withstand land movements and subsidence, in addition to the pressure exerted when a pool is emptied or filled.

3 High resistance finishes.

The PVC-P reinforced liner used by SkyPool is watertight, which gives these pools a high level of safety, protection, robustness and durability. Furthermore, it is resistant to chlorinated water and aging caused by external agents. The liner ensures elasticity and is available with a wide range of optional features (colours, etc.).

4 Quicker installation time.

It can take as much as two months off the time to manufacture and install an Olympic SkyPool (50 x 25 x 2 m) in comparison with a concrete pool. This considerably reduces indirect and opportunity costs.

5 Low maintenance.

As there is access to the pool perimeter, any problems are more quickly located, so repair and maintenance work is easier and costs less.

SkyPool panel models.

High-tech pools.



1



BARCELONA PANEL

Freestanding galvanised steel panel suitable for pools of up to 2.5 m. Fastenings are only required at the bottom.



2

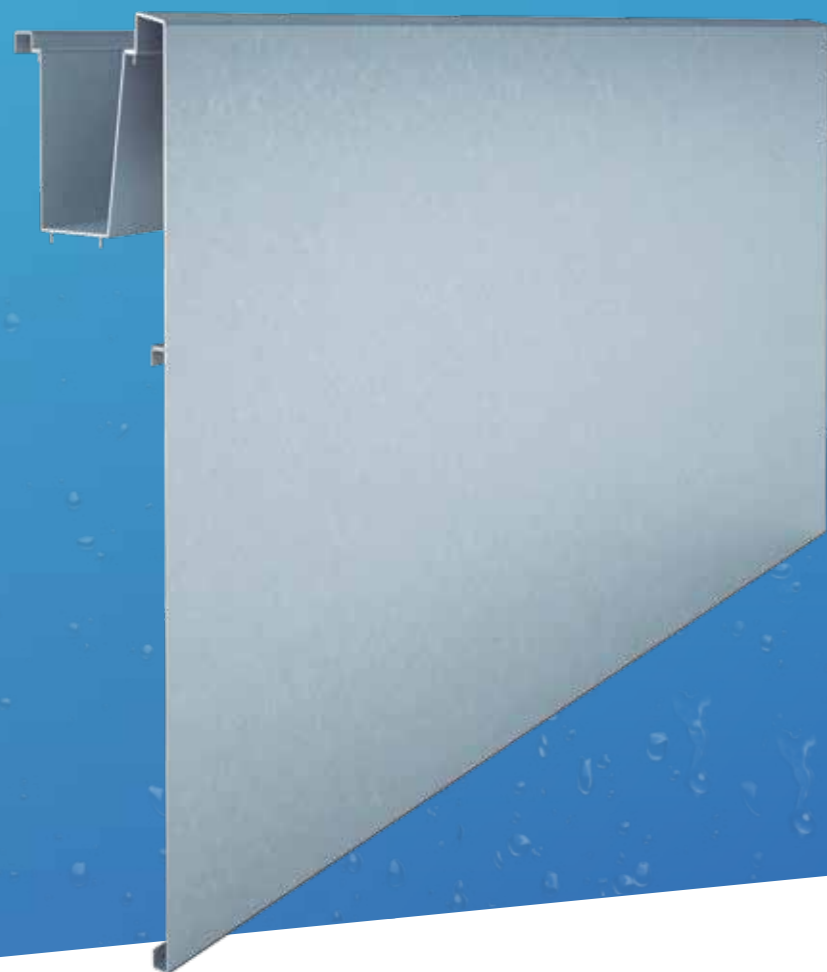


CAR PANEL

Freestanding galvanised steel panel suitable for pools of up to 3 m. Fastenings are required at the top and on the bottom.

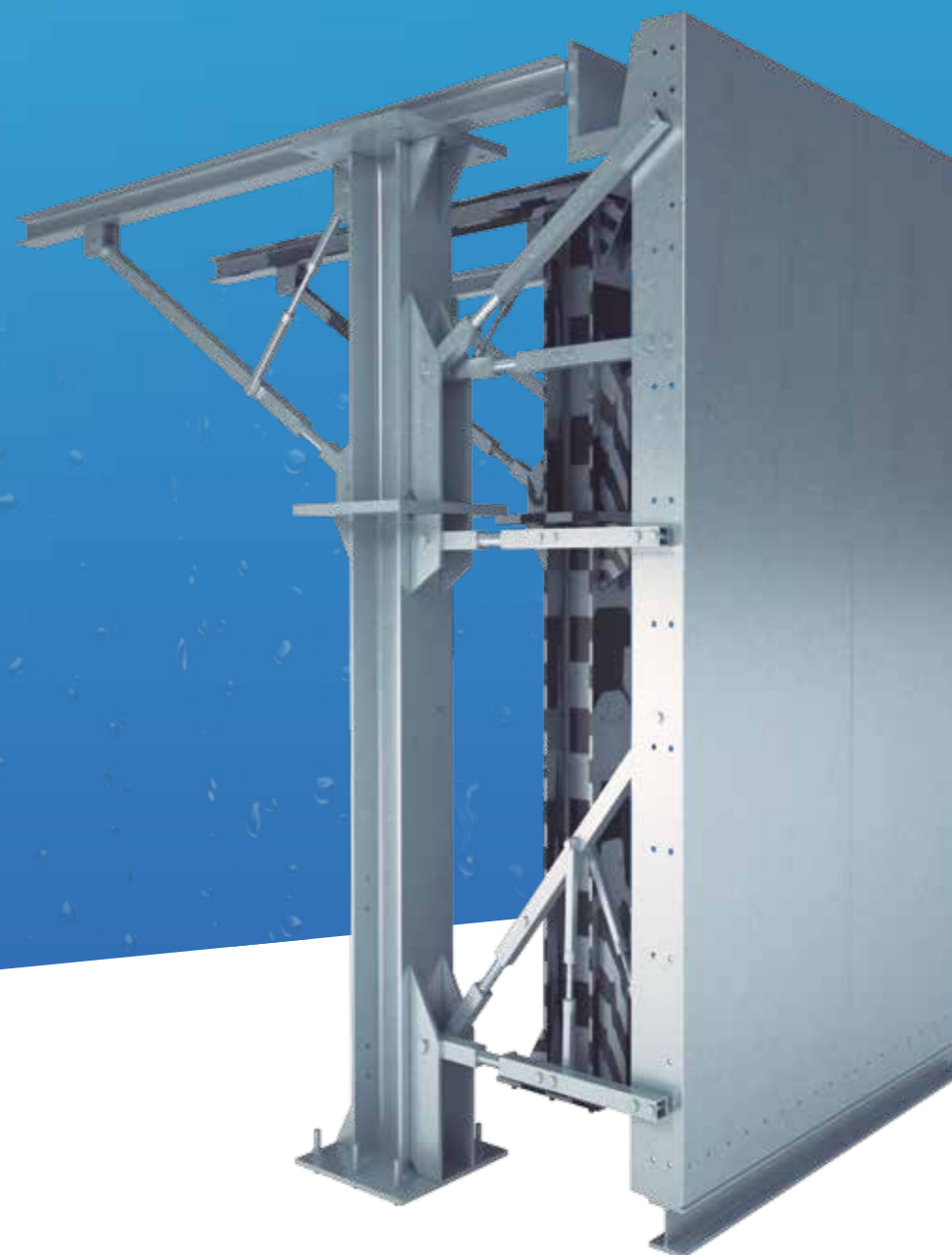
SkyPool panel models.

High-tech pools.



RENOVATION PANEL

Freestanding galvanised steel panel suitable for pools of up to 2.5 m. Fastenings are only required at the bottom.



MELBOURNE PANEL

Freestanding galvanised steel panel suitable for pools of up to 3 m with structure to install the surround of the pool.



SPAIN | more projects on p. 18

Sparger. Safety on diving boards.

When diving off a diving board, the undisturbed water forms a fairly resistant surface, which if combined with a bad descent can result in serious injury on impact.

AstralPool has added Sparger technology to its pools in the shape of a new safety system for

diving pools. Air is released at high pressure from the pool floor, which forms a large amount of bubbles when it mixes with the water to form a cushion for divers. This reduces the risk of injury and divers are more confident when they dive into the water, whether they are beginners or professionals.

Movable wall. Divides pools and multiplies their uses.

Technology that allows a single pool to be divided into two separate pools for different uses. This therefore makes better use of space and gives swimmers a greater variety of options for a lower overall cost.

The movable wall system is able to adapt to and be used in existing pools or newly built ones.

The movable wall is made of AISI-304 stainless steel and is lined with white plastic non-slip sheeting.





projects: SPAIN, UK, USA, AUSTRALIA, CHINA, MEXICO, RUSSIA, TURKEY, GEORGIA, POLAND



projects: TAIWAN, AUSTRALIA, FRANCE, ROMANIA, MALAYSIA, SWEDEN, BRAZIL, EGYPT



For further information:
www.astralpool.com/SkyPool

FLUIDRA S.A
www.fluidra.com