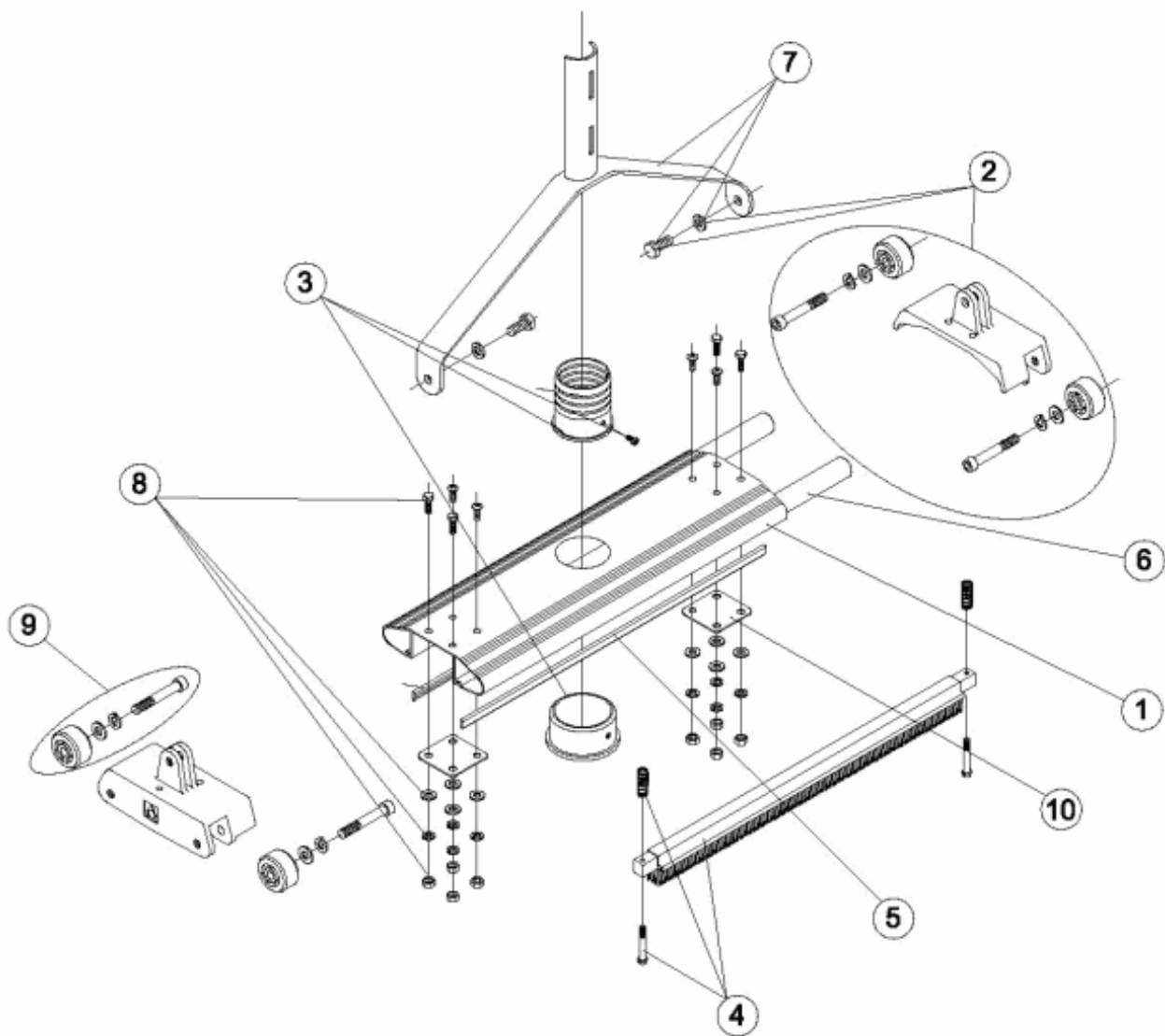


CODE **01358**

BESCHREIBUNG: **BODENREINIGER**

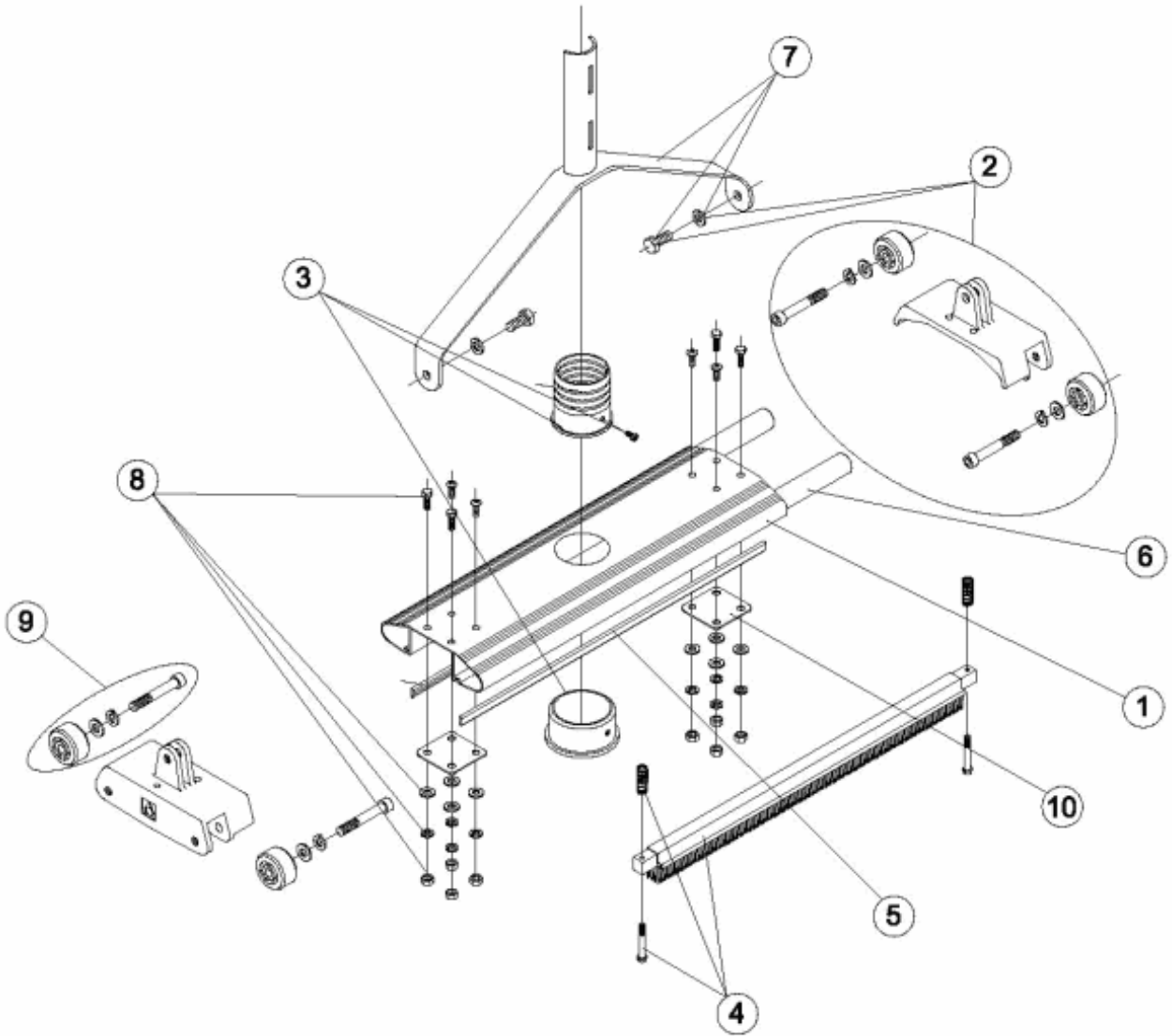


DEUTSCHE

POS	CODE	BESCHREIBUNG	POS	CODE	BESCHREIBUNG
1	4406020601	BODENREINIGER	6	4406020414	GEWICHTE BR 4-RAD
2	4406020602	SEITENTEIL KPL. BR	7	4406020607	GABEL BR ALU
3	4406020504	SCHLAUCHANSCHLUSS BODENREINIGER	8	4406020608	SCHRAUBENSATZ BR ALU
4	4406020505	BÜRSTE BR DOPPEL	9	4406020609	RÄDER BR ALU
5	4406020605	DEFLEKTOR ALU-BODENREINIGER	10	01358R0005	BLECH VESTÄRKUNG

CODE **01358**

DESCRIPTION: **POOL CLEANER**

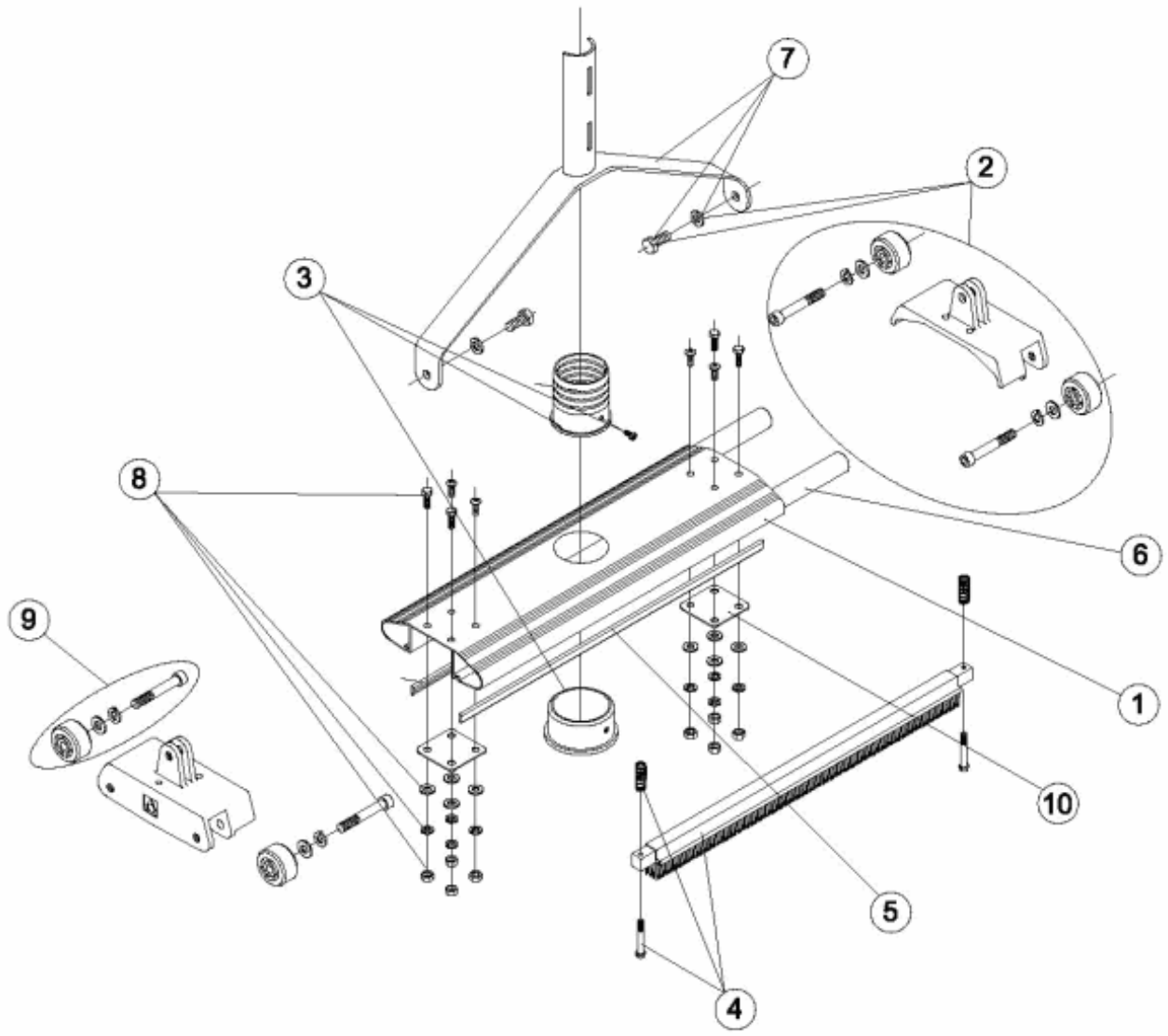


ENGLISH

POS	CODE	DESCRIPTION	POS	CODE	DESCRIPTION
1	4406020601	VAC HEAD BODY	6	4406020414	"VAC HEAD WEIGHTS 2"
2	4406020602	VAC HEAD SIDES	7	4406020607	ALUMINIUM VAC HEAD HANDLE
3	4406020504	VAC HEAD HOSE CONNECTOR	8	4406020608	VAC HEAD NUTS/BOLTS & WASHERS
4	4406020505	DOUBLE VAC HEAD BRUSH	9	4406020609	VAC HEAD WHEELS
5	4406020605	ALUMINIUM VAC HEAD DEFLECTOR	10	01358R0005	BRACE PLATE

CODIGO **01358**

DESCRIPCION: **LIMPIAFONDOS**

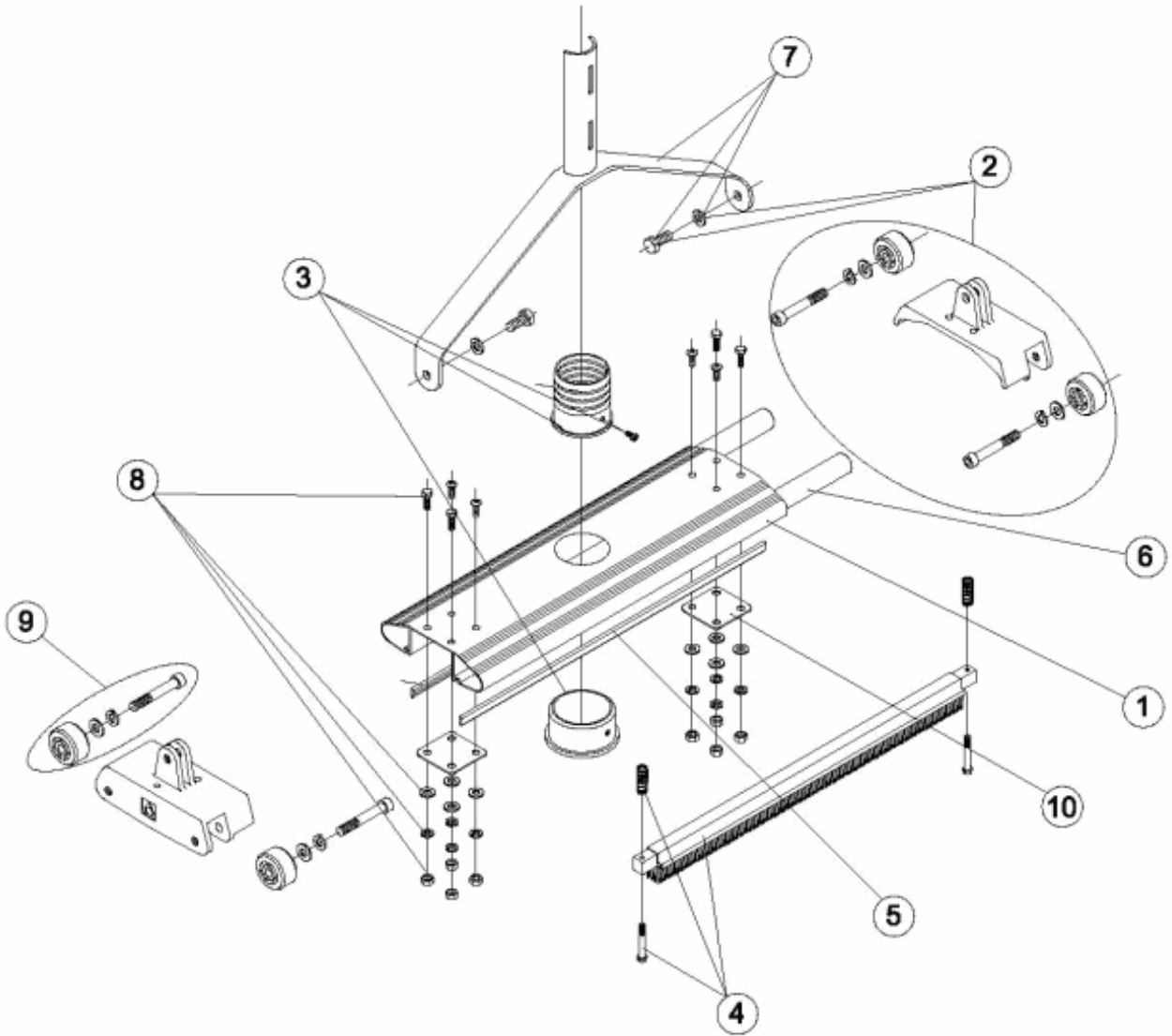


ESPAÑOL

POS	CODIGO	DESCRIPCION	POS	CODIGO	DESCRIPCION
1	4406020601	CUERPO LIMPIAFONDOS	6	4406020414	PLOMOS LIMPIAFONDOS 2"
2	4406020602	LATERAL LIMPIAFONDOS	7	4406020607	HORQUILLA LIMP. ALUMINIO
3	4406020504	CONEXIÓN MANGUERA LIMP.	8	4406020608	TORNILLERIA LIMPIAFONDOS
4	4406020505	CEPILLO LIMP. DOBLE	9	4406020609	RUEDAS LIMPIAFONDOS
5	4406020605	DEFLECTOR LIMP. ALUMINIO	10	01358R0005	CHAPA REFUERZO

CODE **01358**

DESCRIPTION: **NETTOYEUR DE FOND**

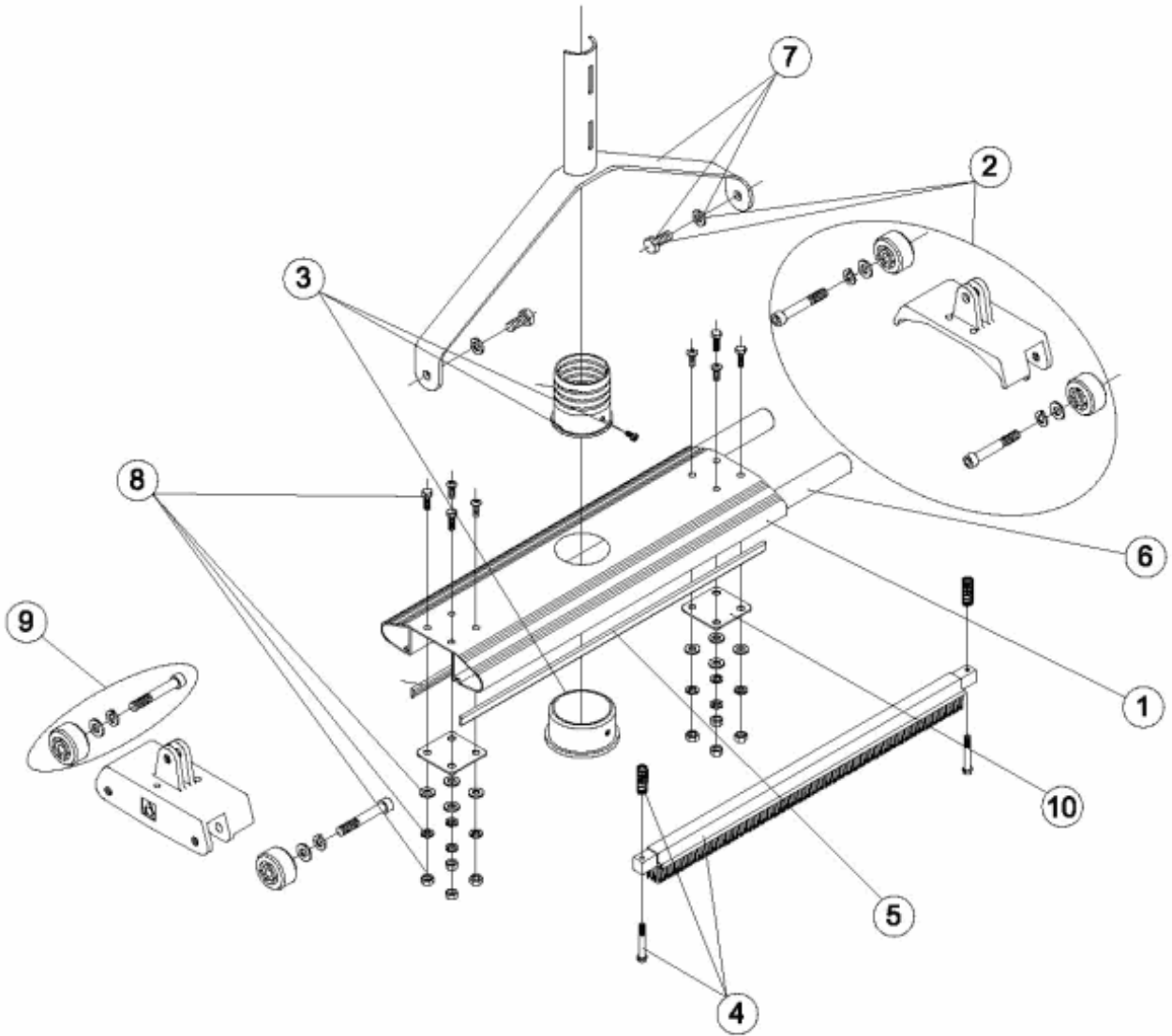


FRANCAIS

POS	CODE	DESCRIPTION	POS	CODE	DESCRIPTION
1	4406020601	CORPS ASPIRATEURS	6	4406020414	"PLOMB ASPIRATEUR 2'''
2	4406020602	SUPPORT LATÉRAL D'ASPIRATEUR	7	4406020607	ÉTRIER ASPIRATEUR ALUMINIUM
3	4406020504	CONNEXION MANCHON ASPIRATEUR	8	4406020608	VISSERIES ASPIRATEURS
4	4406020505	BROSSE ASPIRATEUR DOUBLE	9	4406020609	ROUES ASPIRATEURS
5	4406020605	DÉFLECTEUR ASPIRATEUR ALUMINIUM	10	01358R0005	BARRE DE RENFORT

CODICE **01358**

DESCRIZIONE: **PULISCIFONDI**

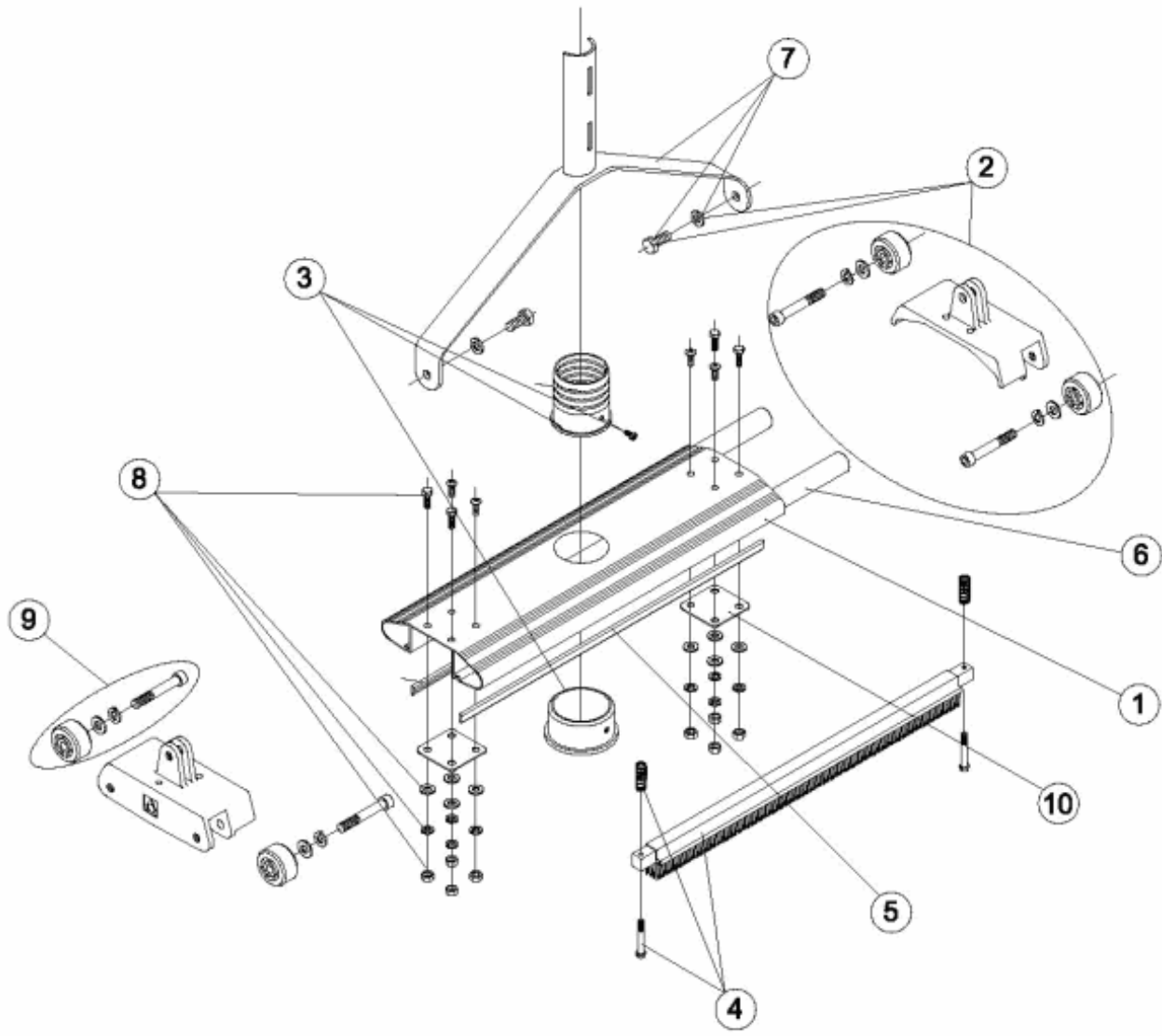


ITALIANO

POS	CODICE	DESCRIZIONE	POS	CODICE	DESCRIZIONE
1	4406020601	CORPO ASPIRAFANGO	6	4406020414	*PESI ASPIRAFANGO 2**
2	4406020602	LATERALE ASPIRAFANGO	7	4406020607	FORCELLA ASPIRAFANGO ALLUMINIO
3	4406020504	CONNESSIONE MANICOTTO ASPIRAF.	8	4406020608	KIT BULLONERIA ASPIRAFANGO
4	4406020505	SPAZZOLA ASPIRAFANGO DOPPIA	9	4406020609	RUOTE ASPIRAFANGO
5	4406020605	DEFLETTORE ASPIRAFANGO ALLUMINIO	10	01358R0005	LAMINA RINFORZO

CODIGO **01358**

DESCRIÇÃO: **LIMPADOR DE FUNDOS**



PORTUGUES

POS	CODIGO	DESCRIÇÃO	POS	CODIGO	DESCRIÇÃO
1	4406020601	CORPO ASPIRADOR	6	4406020414	"CHUMBOS ASPIRADOR 2"
2	4406020602	LATERAL ASPIRADOR	7	4406020607	FORQUILHA ASP. ALUMINIO
3	4406020504	LIGAÇÃO MANGUEIRA ASP. DUPLO	8	4406020608	CONJ. ASP. ALUMINIO
4	4406020505	ESCOVA ASP. DUPLO	9	4406020609	RODAS ASPIRADOR
5	4406020605	DEFLECTOR ASP. ALUMINIO	10	01358R0005	CHAPA REFORÇO