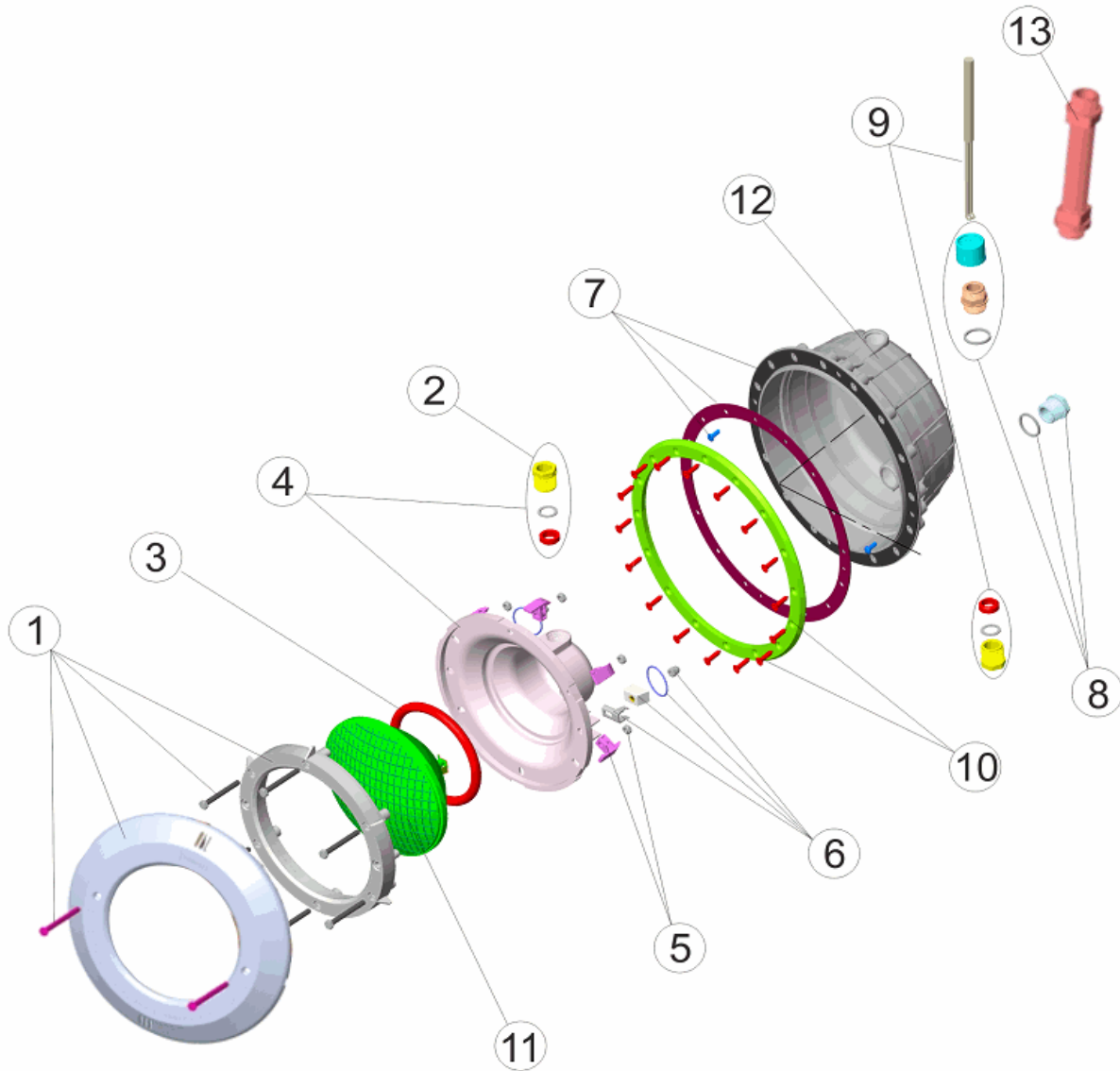


CODIGO **07667**

DESCRIPCION: **PROYECTOR STD.NICHO PP. EMB. BLANCO / CABLE / PASACABLE**



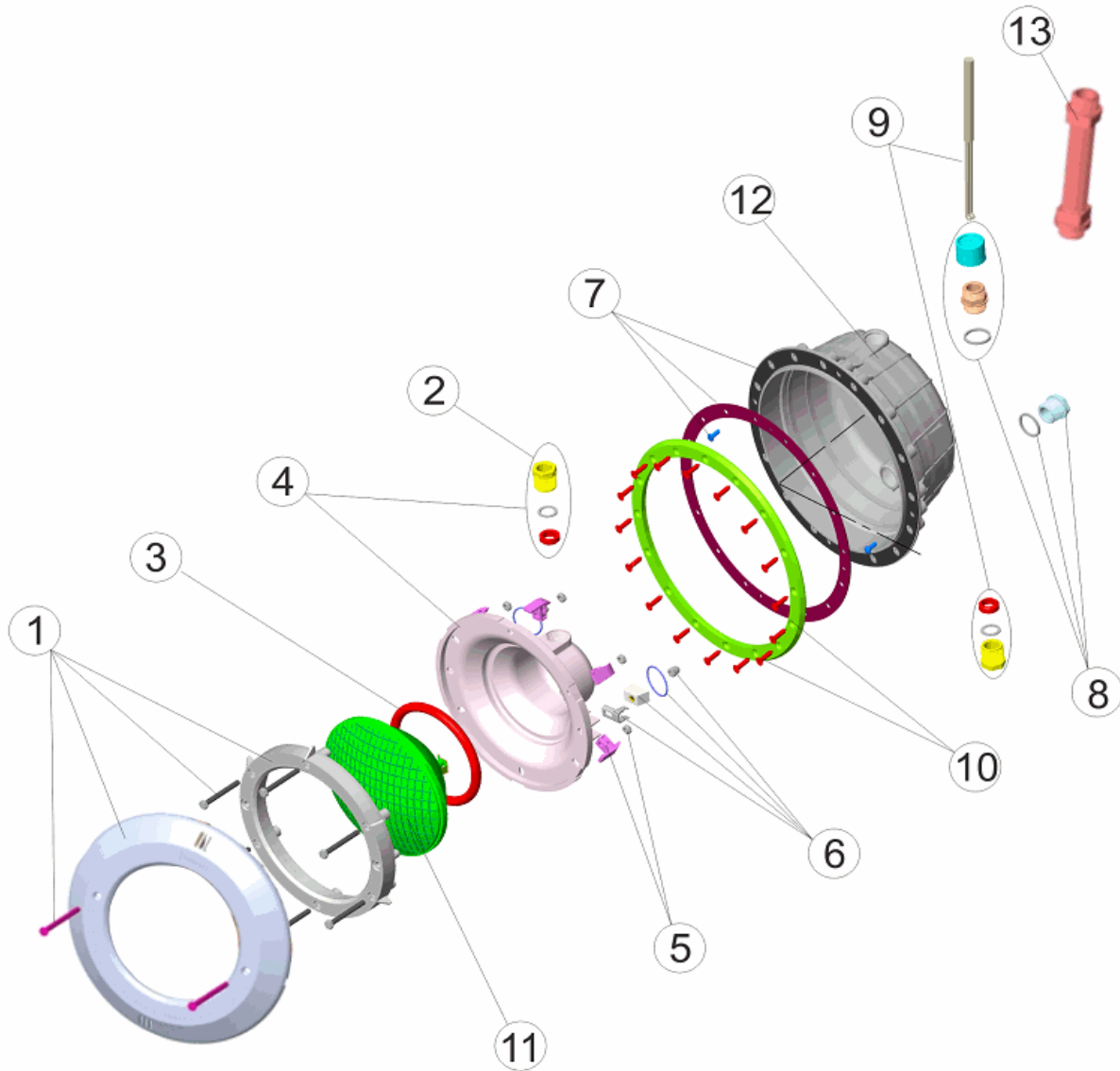
ESPAÑOL

POS	CODIGO	DESCRIPCION	POS	CODIGO	DESCRIPCION
1	4403010302	ARO BLANCO PROYECTOR	8	4403010313	PRENSAESTOPAS CUERPO PROYECTOR M-25
2	4403010312	PRENSAESTOPAS FOCO PROYECTOR M-25	9	4403010314	CABLE PROYECTOR M-25 HALOGENO
3	4403010304	JUNTA TORICA PROYECTOR	10	4402050023	BRIDA FIJACION ANCHA PROY.STD.
4	4403010305	FONDO FOCO PROYECTOR HALOGENO	11	00370 IP 112	LAMPARA 300W 12V.
5	4403010306	CLIP FIJACION PROYECTOR	12	07667R0100	NICHO PROYECTOR
6	4403010307	FIJACION FOCO PROYECTOR	13	4403010059	MANGUERA PASACABLES M-25 3/4"
7	4403013507	JUNTA ADHESIVA PROYECTOR			

CODIGO **07667**DESCRIPCION: **PROYECTOR STD.NICHO PP. EMB. BLANCO / CABLE / PASACABLE****OBSERVACIONES**

CODE **07667**

DESCRIPTION: **PROJECTEUR PLAT PISCINE PRÉFABRIQUÉE**



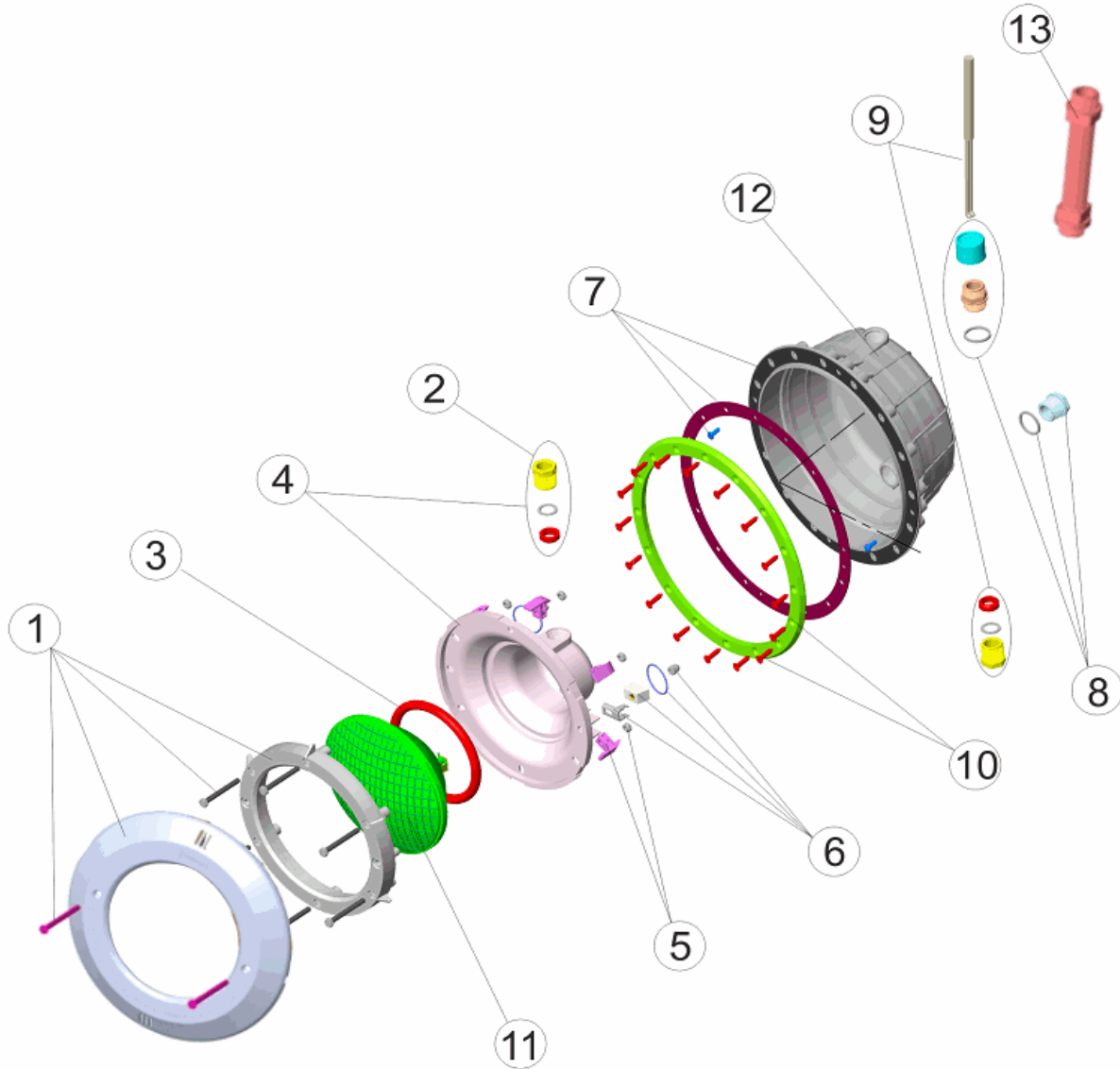
FRANCAIS

POS	CODE	DESCRIPTION	POS	CODE	DESCRIPTION
1	4403010302	ENJOLIVEUR BLANC DE PROJECTEUR	8	4403010313	CORPS PRESSE ETOUPE M-25
2	4403010312	PRESSE ETOUPE PROJECTEUR M-25	9	4403010314	CABLE PROJECTEUR M-25
3	4403010304	JOINT TORIQUE PROJECTEUR	10	4402050023	BRIDE FIXATION
4	4403010305	NICHE D'AMPOULE DE PROJECTEUR	11	00370 IP 112	LAMPE
5	4403010306	CLIP FIXATION PROJECTEUR	12	07667R0100	NICHE PROJECTEUR
6	4403010307	PLATINE FIXATION	13	4403010059	TUYAU ANNEAU M-25
7	4403013507	JOINT ADHESIF PROJECTEUR			

CODE **07667**DESCRIPTION: **PROJECTEUR PLAT PISCINE PRÉFABRIQUÉE****OBSERVATIONS**

CODE **07667**

DESCRIPTION: **FLAT LIGHT PREFABRICATED POOL**



ENGLISH

POS	CODE	DESCRIPTION	POS	CODE	DESCRIPTION
1	4403010302	WHITE FACEPLATE	8	4403010313	BODY PACKING GLAND M-25
2	4403010312	PACKING GLAND M-25	9	4403010314	LIGHT CABLE M-25
3	4403010304	LIGHT O RING	10	4402050023	FIXING FLANGE
4	4403010305	BACK COVER	11	00370 IP 112	LIGHTBULB
5	4403010306	LIGHT FIXING CLIP	12	07667R0100	FLOODLAMP HOUSING
6	4403010307	LIGHT FIXING FIXTURES	13	4403010059	HOSE CONDUIT M-25
7	4403013507	LIGHT ADHESIVE GASKET			

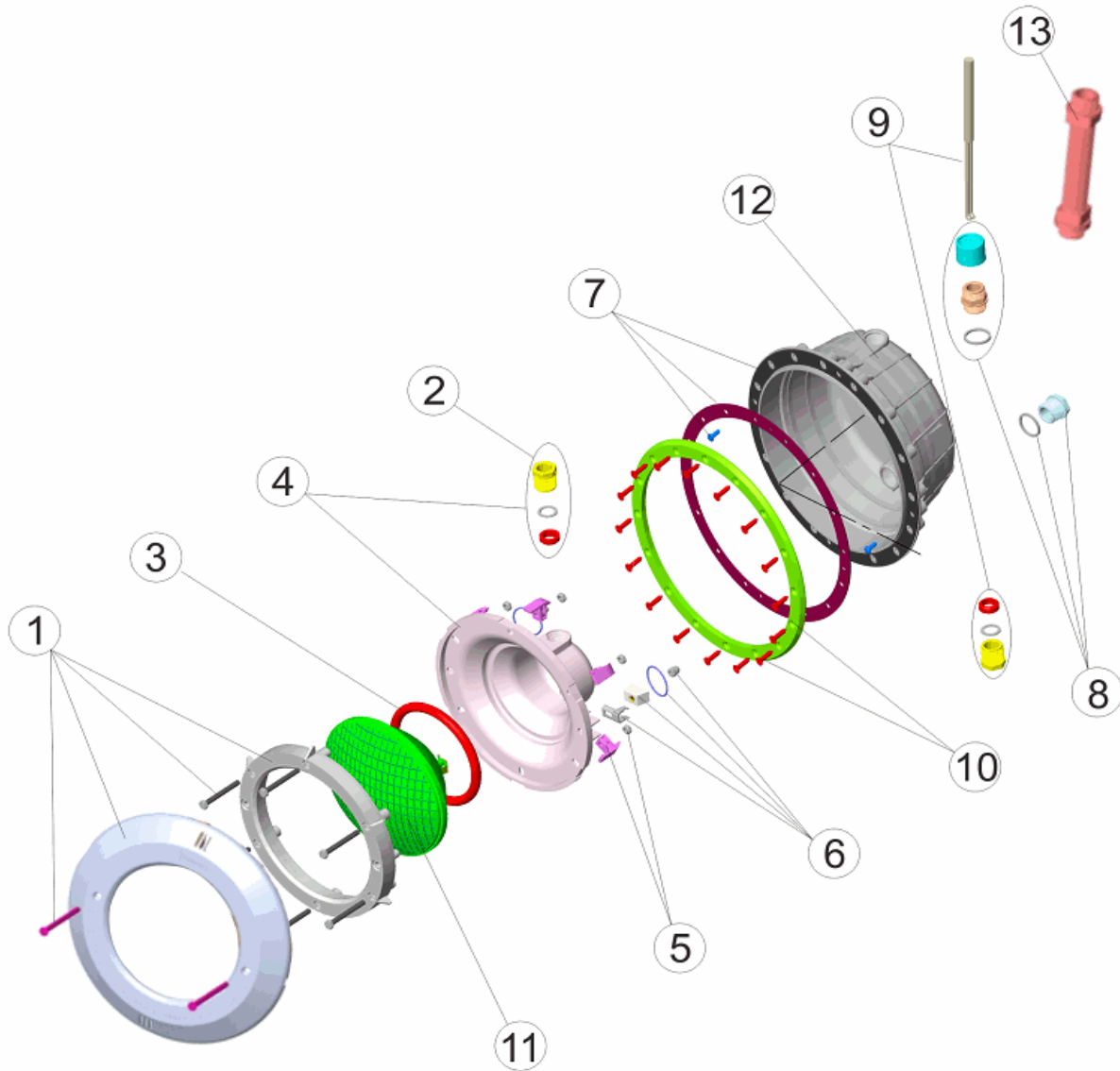
CODE **07667**

DESCRIPTION: **FLAT LIGHT PREFABRICATED POOL**

OBSERVATIONS

CODICE **07667**

DESCRIZIONE: **PROIETTORE PIANO PISCINA PREFABBRICATA**



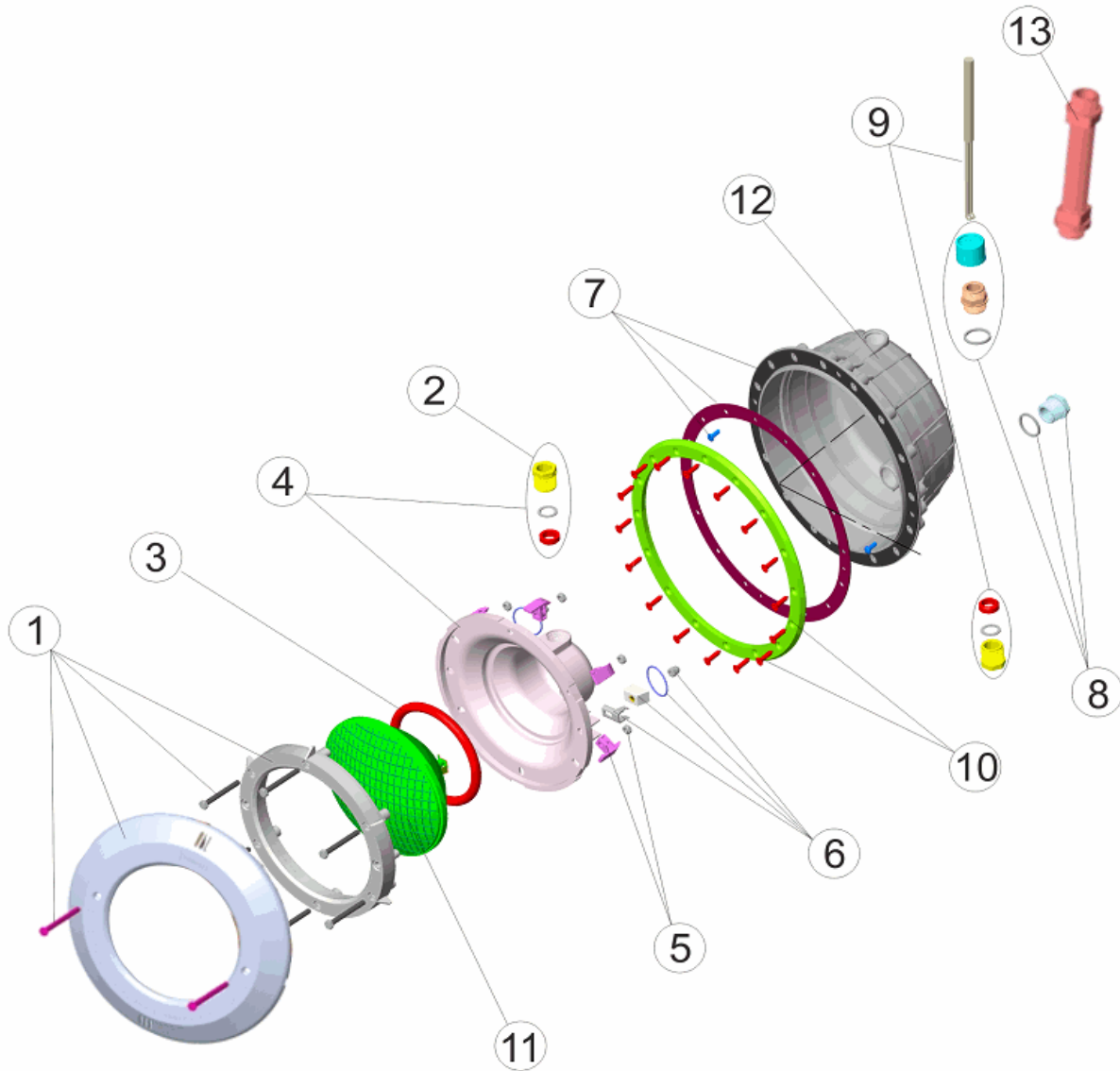
ITALIANO

POS	CODICE	DESCRIZIONE	POS	CODICE	DESCRIZIONE
1	4403010302	FLANGIA BIANCA FARO	8	4403010313	PRESSACAVI CORPO M-25
2	4403010312	PRESSACAVI M-25	9	4403010314	CABLE PROJECTEUR M-25
3	4403010304	O-RING FARO	10	4402050023	FLANGIA FISSAGGIO
4	4403010305	COPPA FARO	11	00370 IP 112	LAMPADINA
5	4403010306	CLIP FISSAGGIO FARO	12	07667R0100	NICCHIA PROIETTORE
6	4403010307	FISSAGGIO FARO	13	4403010059	TUBO PASSACAVO M-25
7	4403013507	GUARNIZIONE ADESIVA FARO			

CODICE **07667**DESCRIZIONE: **PROIETTORE PIANO PISCINA PREFABBRICATA****OSSERVAZIONI**

CODE **07667**

BESCHREIBUNG: **FLACHER SCHEINWERFER VORGEFERTIGTES SCHWIMMBECKEN**



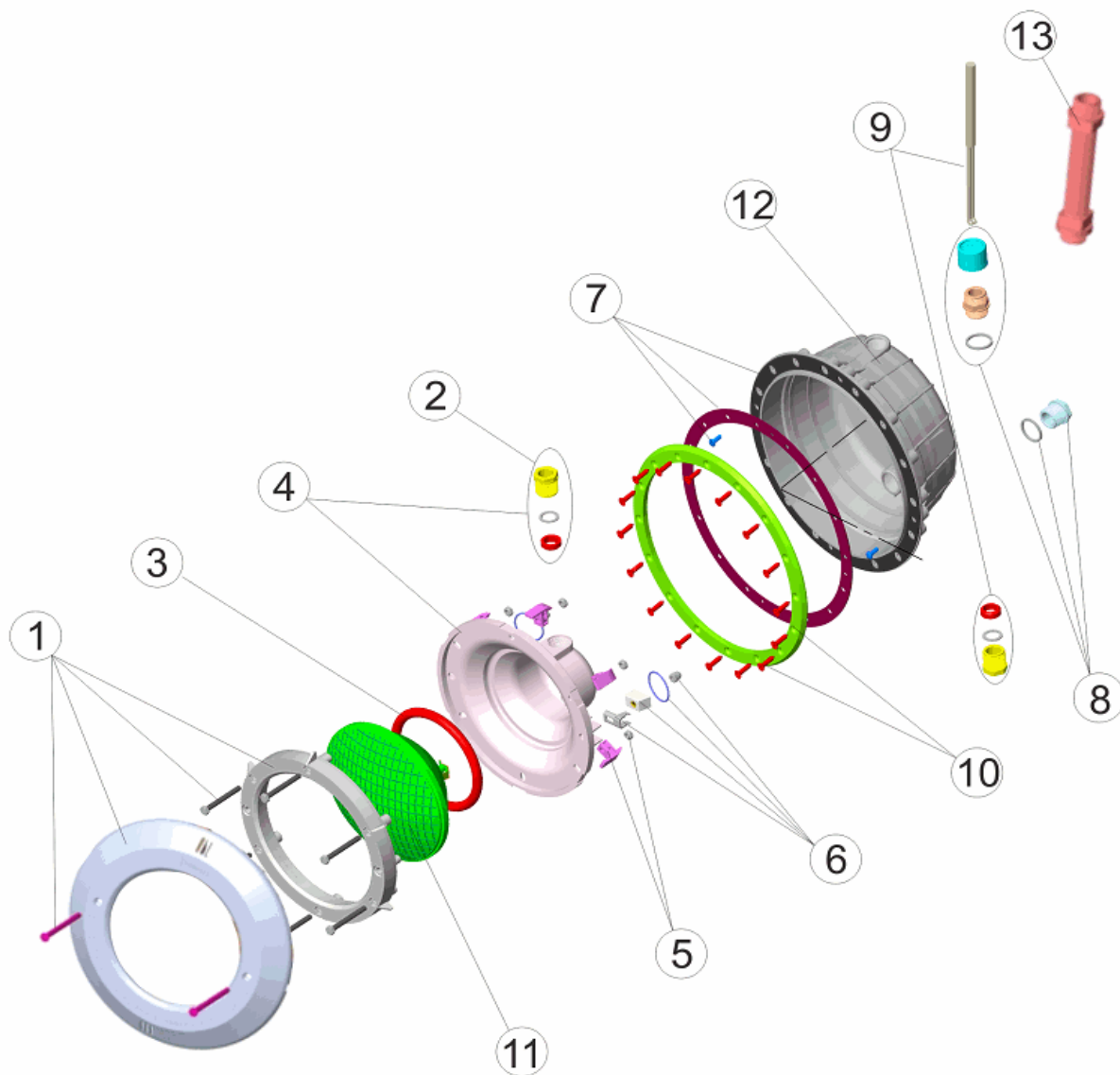
DEUTSCH

POS	CODE	BESCHREIBUNG	POS	CODE	BESCHREIBUNG
1	4403010302	BLENDE WEISS UWS	8	4403010313	WANDDURCHFÜHRUNG UWS M-25
2	4403010312	QUETSCHVERSCHRAUBUNG GEHÄUSE UWS M-25	9	4403010314	KABEL UWS M-25
3	4403010304	O-RING UWS	10	4402050023	FIXIERLASCHE
4	4403010305	BEFESTIGUNGSRINGSATZ UWS	11	00370 IP 112	LAMPE
5	4403010306	BEFESTIGUNGSCLIPSATZ UWS	12	07667R0100	EINBAUTOPF
6	4403010307	SCHRAUBE GEHÄUSE UWS	13	4403010059	SCHLAUCH FÜR WANDDURCHFÜHRUNG
7	4403013507	DICHTUNG FLANSCH UWS			

CODE **07667**BESCHREIBUNG: **FLACHER SCHEINWERFER VORGEFERTIGTES SCHWIMMBECKEN****HINWEISE**

CODIGO **07667**

DESCRIÇÃO: **PROJECTOR PLANO PISCINA PRÉ-FABRICADA**



PORTUGUES

POS	CODIGO	DESCRIÇÃO	POS	CODIGO	DESCRIÇÃO
1	4403010302	ARO BRANCO PROJECTOR	8	4403010313	BUCIN CORPO M-25
2	4403010312	BUCIN FOCO M-25	9	4403010314	CABO PROJECTOR M-25
3	4403010304	JUNTA TÓRICA PROJECTOR	10	4402050023	FLANGE DE FIXAÇÃO
4	4403010305	FUNDO FOCO PROJECTOR	11	00370 IP 112	BOMBILHA
5	4403010306	CLIP FIXAÇÃO PROJECTOR	12	07667R0100	NICHO PROJECTOR
6	4403010307	FIXAÇÃO FOCO PROJECTOR	13	4403010059	MANGUEIRA ANILHA M-25
7	4403013507	JUNTA ADESIVA PROJECTOR			

CODIGO **07667**DESCRIÇÃO: **PROJECTOR PLANO PISCINA PRÉ-FABRICADA****OBSERVAÇÕES**
