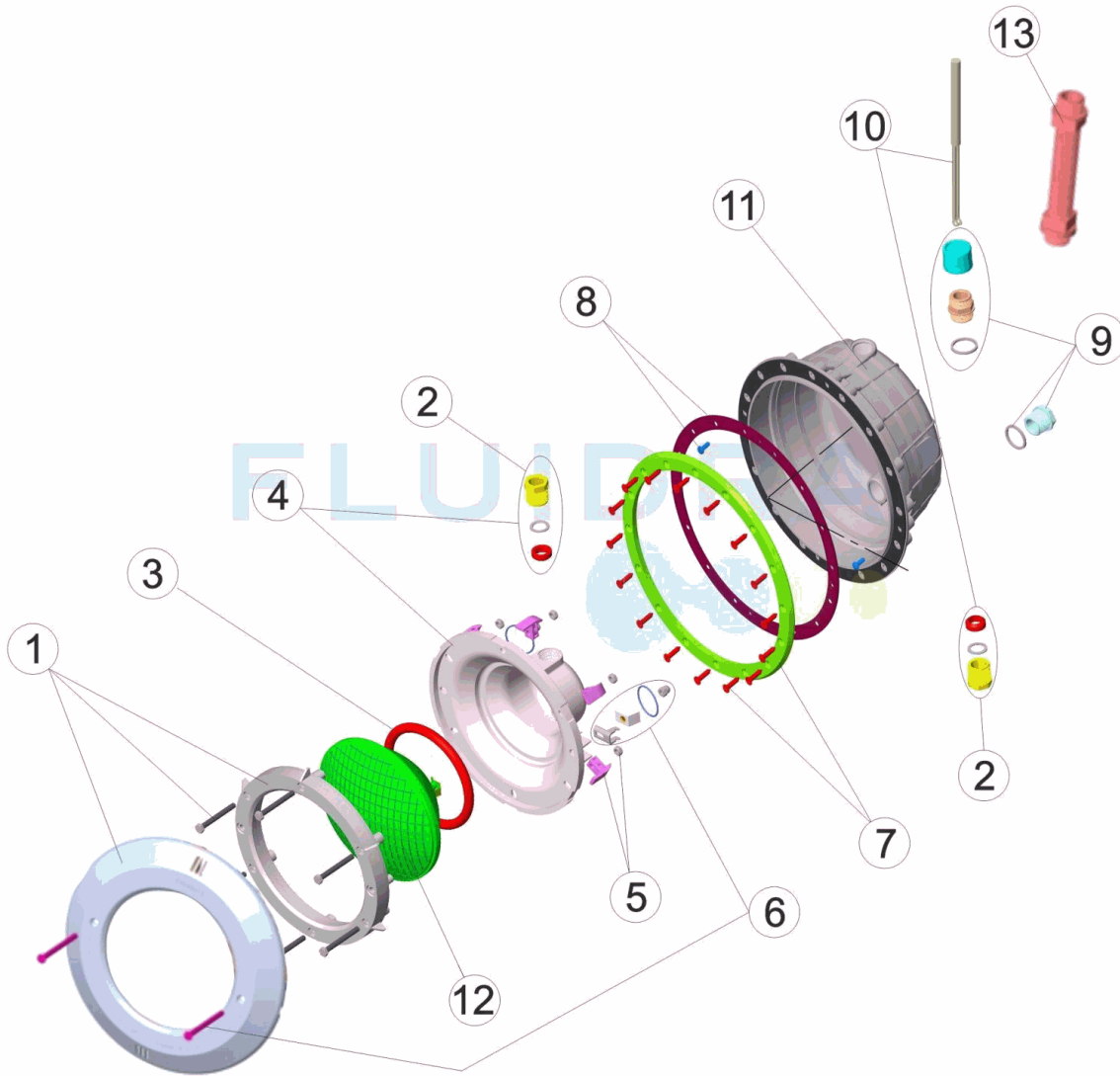


CODIGO **07668**

DESCRIPCION: **PROY. STD. NICHU PP. EMB. BLANCO / CABLE / PASACABLES**

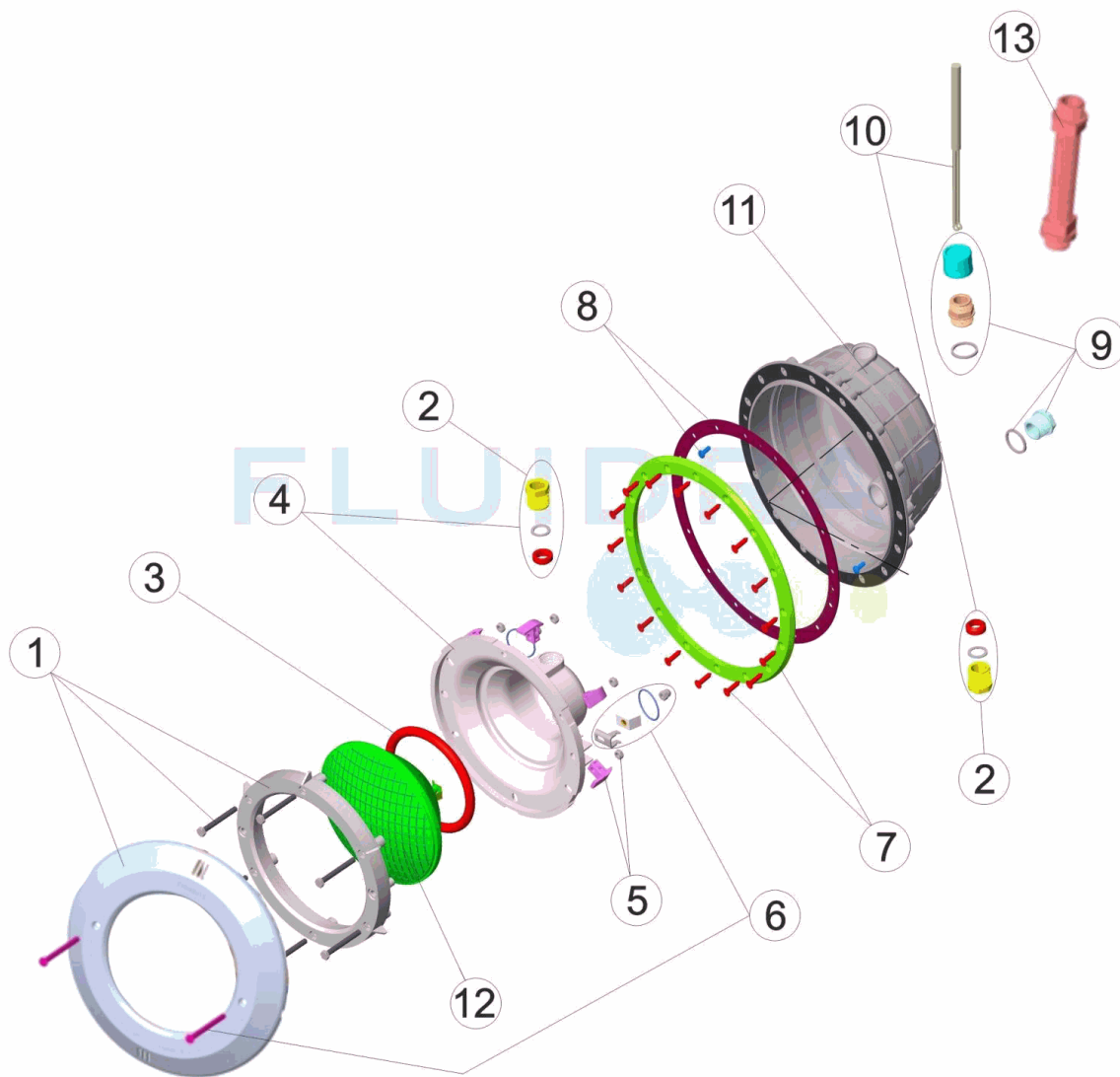


ESPAÑOL

POS	CODIGO	DESCRIPCION	POS	CODIGO	DESCRIPCION
1	4403010302	ARO BLANCO PROYECTOR	8	4403012412	JUNTA ADHESIVA PROYECTOR
2	4403010312	PRENSAESTOPAS FOCO PROYECTOR M-25	9	4403010313	PRENSAESTOPAS CUERPO PROYECTOR M-25
3	4403010304	JUNTA TORICA PROYECTOR	10	4403010314	CABLE PROYECTOR M-25 HALOGENO
4	4403010305	FONDO FOCO PROYECTOR HALOGENO	11	07667R0200	NICHU PROYECTOR
5	4403010306	CLIP FIJACION PROYECTOR	12	4403010058	LAMPARA 300W.12.V.
6	4403015002	CJTO. FIJACION PROYECTOR JELLY STD. A2	13	4403010059	MANGUERA PASACABLES M-25 3/4"
7	4403011009	BRIDA FIJACION PROYECTOR			

CODE 07668

DESCRIPTION: PROJECTEUR PLAT PISCINE PRÉFABRIQUÉE

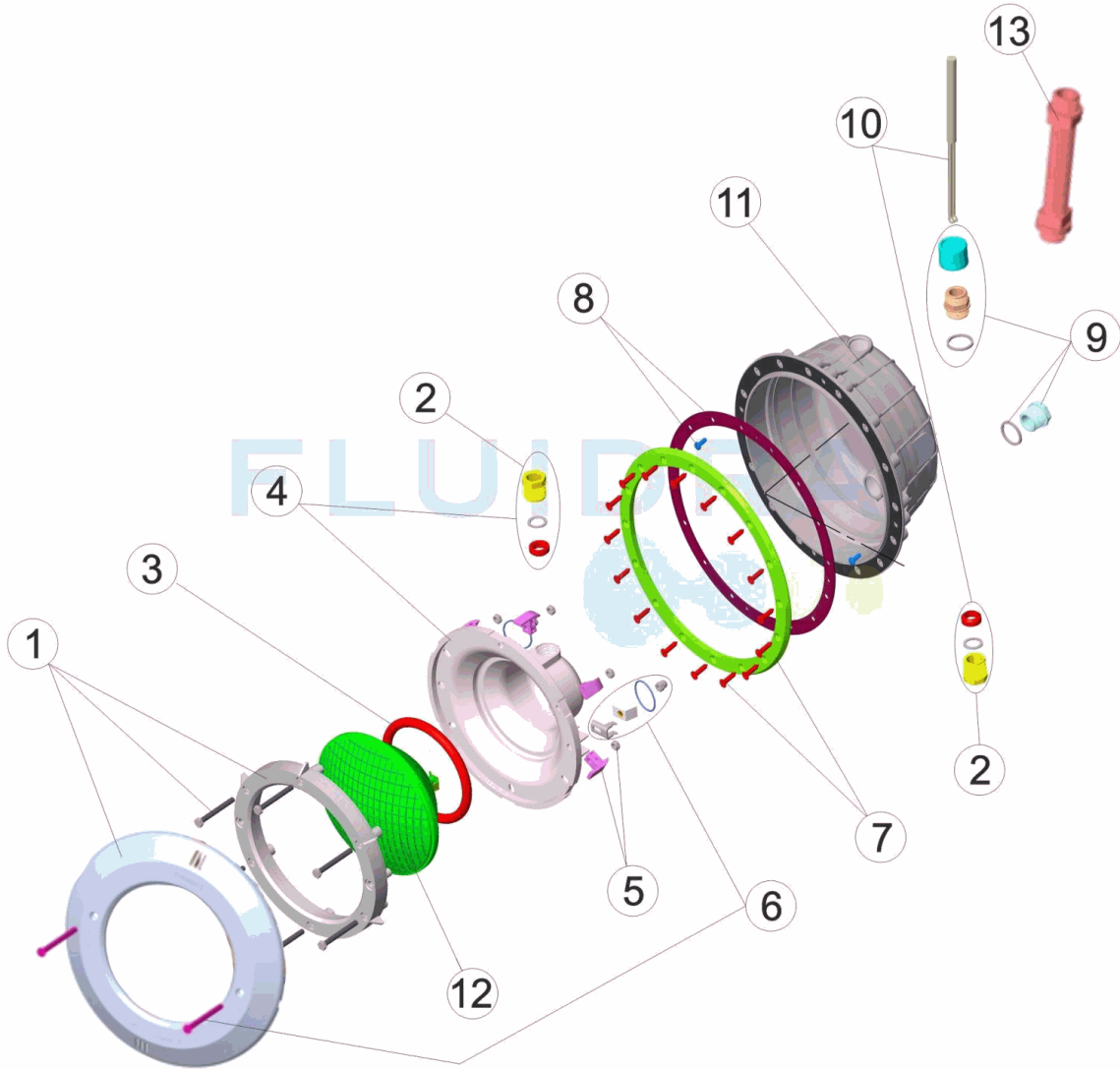


FRANCAIS

POS	CODE	DESCRIPTION	POS	CODE	DESCRIPTION
1	4403010302	ENJOLIVEUR BLANC DE PROJECTEUR	8	4403012412	JOINT ADHESIF PROJECTEUR
2	4403010312	PRESSE ETOUPE PROJECTEUR M-25	9	4403010313	CORPS PRESSE ETOUPE M-25
3	4403010304	JOINT TORIQUE PROJECTEUR	10	4403010314	CABLE PROJECTEUR M-25
4	4403010305	NICHE D'AMPOULE DE PROJECTEUR	11	07667R0200	NICHE PROJECTEUR
5	4403010306	CLIP FIXATION PROJECTEUR	12	4403010058	LAMPE
6	4403015002	ENSEMBLE FIXATION PROJECTEUR JELLY STD. A2	13	4403010059	TUYAU ANNEAU M-25
7	4403011009	BRIDE FIXATION PROJECTEUR			

CODE **07668**

DESCRIPTION: **FLAT LIGHT PREFABRICATED POOL**

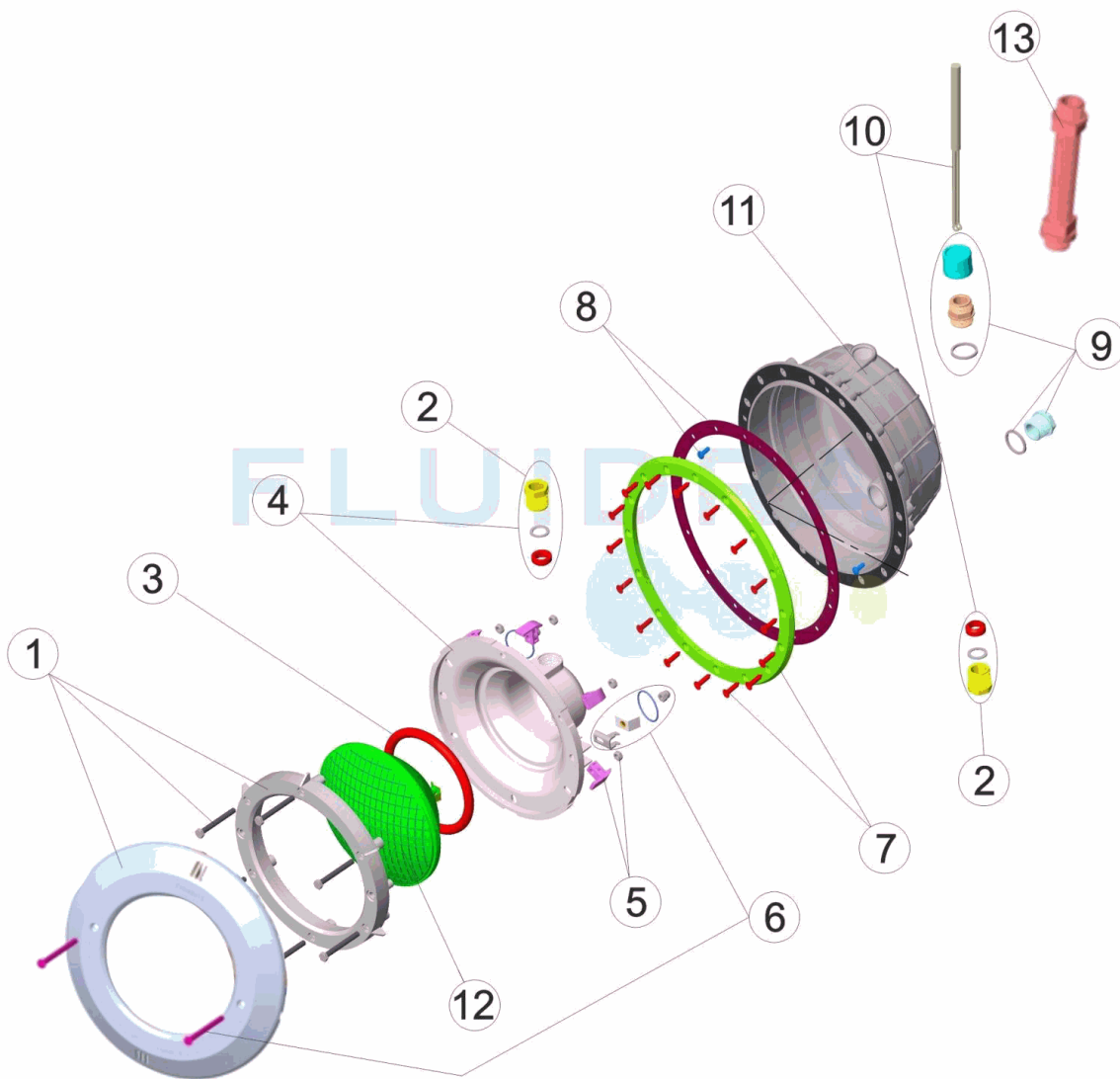


ENGLISH

POS	CODE	DESCRIPTION	POS	CODE	DESCRIPTION
1	4403010302	WHITE FACEPLATE	8	4403012412	LIGHT ADHESIVE GASKET
2	4403010312	PACKING GLAND M-25	9	4403010313	BODY PACKING GLAND M-25
3	4403010304	LIGHT O RING	10	4403010314	LIGHT CABLE M-25
4	4403010305	BACK COVER	11	07667R0200	FLOODLAMP HOUSING
5	4403010306	LIGHT FIXING CLIP	12	4403010058	LIGHTBULB
6	4403015002	FIXING SET UNDERWATER LIGHT JELLY STD. A2	13	4403010059	HOSE CONDUIT M-25
7	4403011009	LIGHT FIXING FLANGE			

CODICE **07668**

DESCRIZIONE: **PROIETTORE PIANO PISCINA PREFABBRICATA**

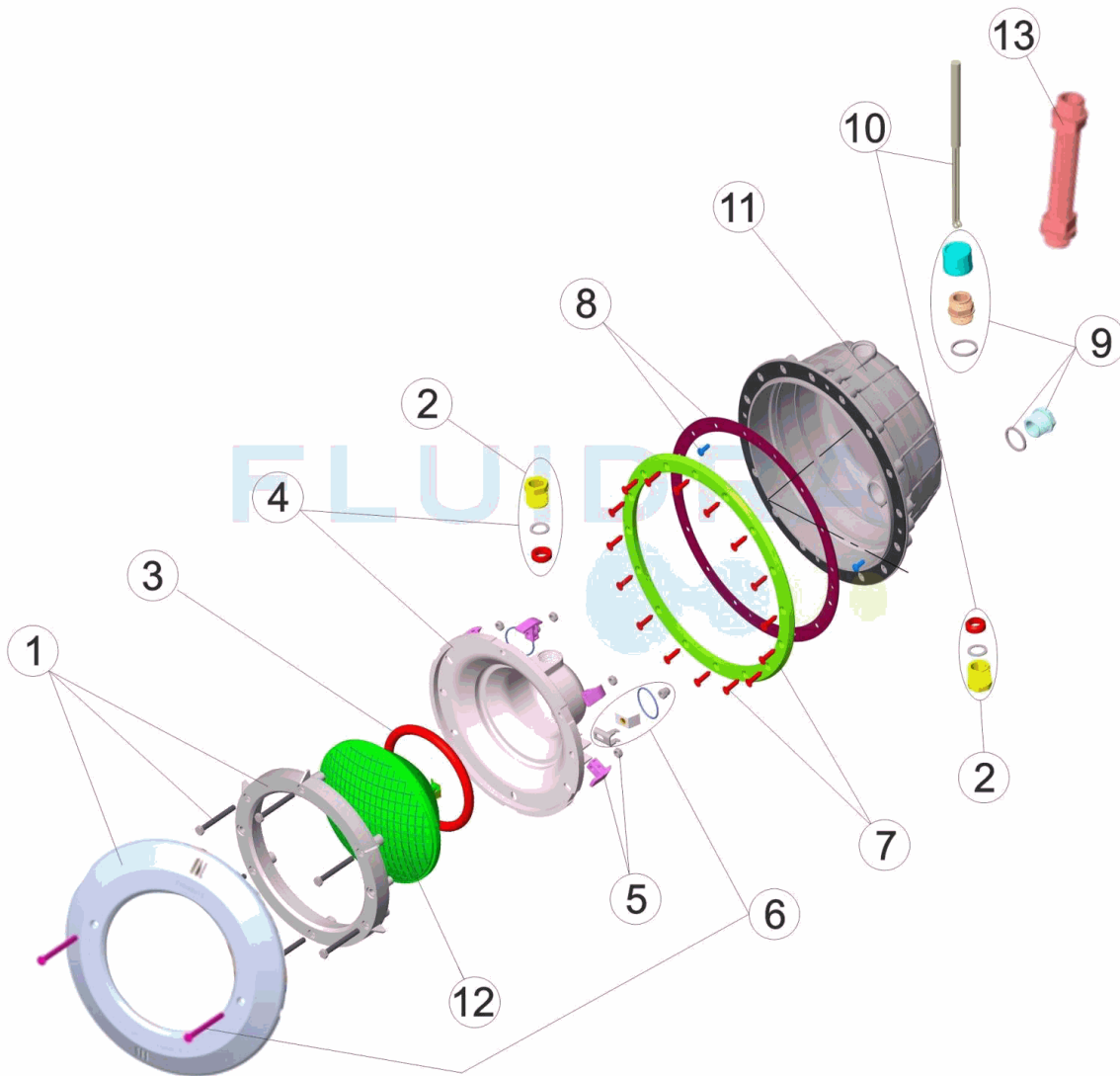


ITALIANO

POS	CODICE	DESCRIZIONE	POS	CODICE	DESCRIZIONE
1	4403010302	FLANGIA BIANCA FARO	8	4403012412	GUARNIZIONE ADESIVA FARO
2	4403010312	PRESSACAVI M-25	9	4403010313	PRESSACAVI CORPO M-25
3	4403010304	O-RING FARO	10	4403010314	CABLE PROJECTEUR M-25
4	4403010305	COPPA FARO	11	07667R0200	NICCHIA PROIETTORE
5	4403010306	CLIP FISSAGGIO FARO	12	4403010058	LAMPADINA
6	4403015002	KIT FISSAGGIO PROIETTORE JELLY STD. A2	13	4403010059	TUBO PASSACAVO M-25
7	4403011009	FLANGIA FISSAGGIO FARO			

CODE **07668**

BESCHREIBUNG: **FLACHER SCHEINWERFER VORGEFERTIGTES SCHWIMMBECKEN**

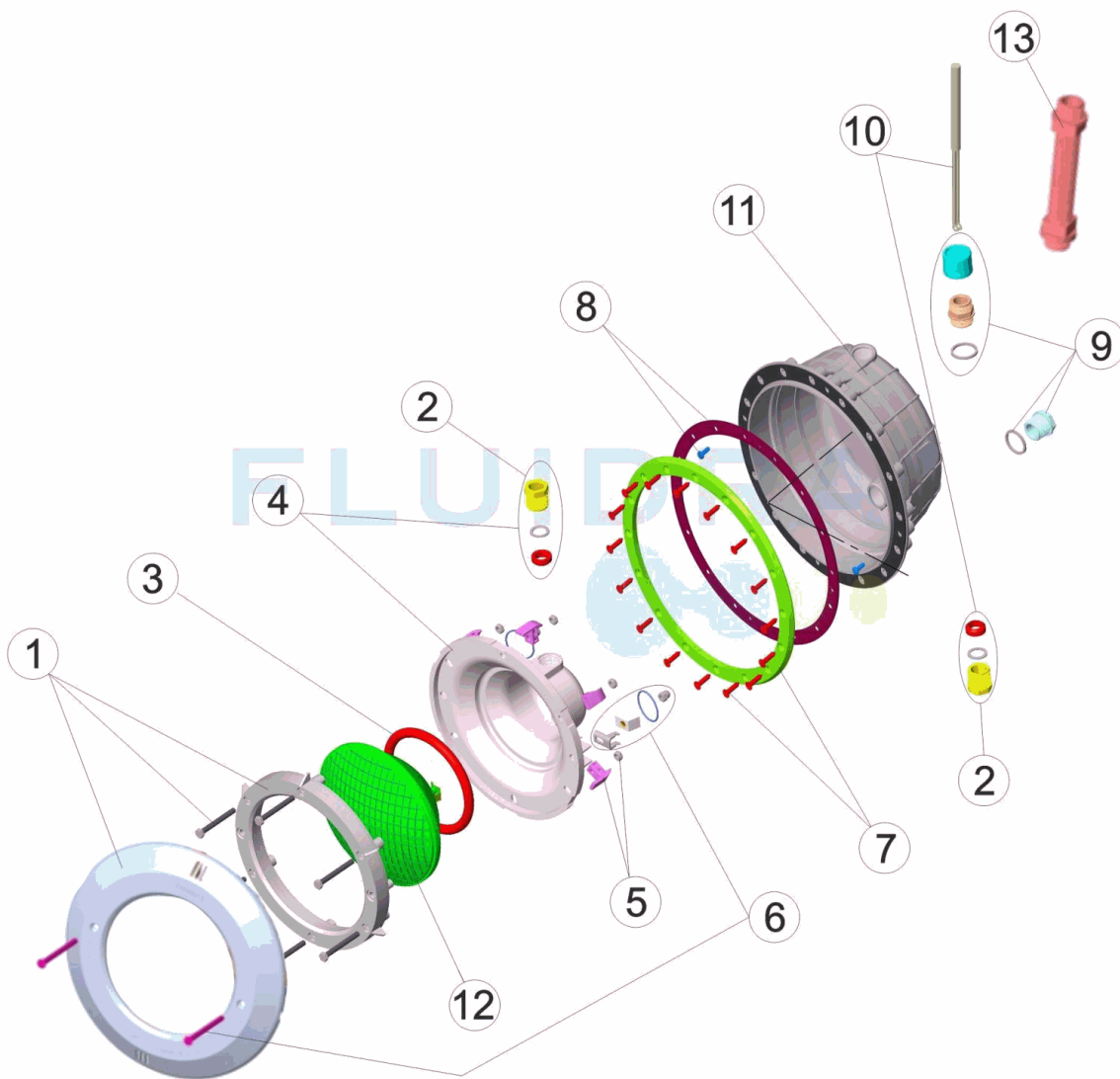


DEUTSCH

POS	CODE	BESCHREIBUNG	POS	CODE	BESCHREIBUNG
1	4403010302	BLENDE WEISS UWS	8	4403012412	DICHTUNG FLANSCH UWS
2	4403010312	QUETSCHVERSCHRAUBUNG GEHÄUSE UWS M-25	9	4403010313	WANDDURCHFÜHRUNG UWS M-25
3	4403010304	O-RING UWS	10	4403010314	KABEL UWS M-25
4	4403010305	BEFESTIGUNGSRINGSATZ UWS	11	07667R0200	EINBAUTOPF
5	4403010306	BEFESTIGUNGSCLIPSATZ UWS	12	4403010058	LAMPE
6	4403015002	BEFESTIGUNGSSET SCHEINWERFER JELLY STD. A2	13	4403010059	SCHLAUCH FÜR WANDDURCHFÜHRUNG
7	4403011009	FLANSCH MIT SCHRAUBEN UWS			

CODIGO **07668**

DESCRIÇÃO: **PROJECTOR PLANO PISCINA PRÉ-FABRICADA**



PORTUGUES

POS	CODIGO	DESCRIÇÃO	POS	CODIGO	DESCRIÇÃO
1	4403010302	ARO BRANCO PROJECTOR	8	4403012412	JUNTA ADESIVA PROJECTOR
2	4403010312	BUCIN FOCO M-25	9	4403010313	BUCIN CORPO M-25
3	4403010304	JUNTA TÓRICA PROJECTOR	10	4403010314	CABO PROJECTOR M-25
4	4403010305	FUNDO FOCO PROJECTOR	11	07667R0200	NICHO PROJECTOR
5	4403010306	CLIP FIXAÇÃO PROJECTOR	12	4403010058	BOMBILHA
6	4403015002	CONJUNTO FIXAÇÃO PROJECTOR JELLY STD. A2	13	4403010059	MANGUEIRA ANILHA M-25
7	4403011009	FLANGE FIXAÇÃO PROJECTOR			