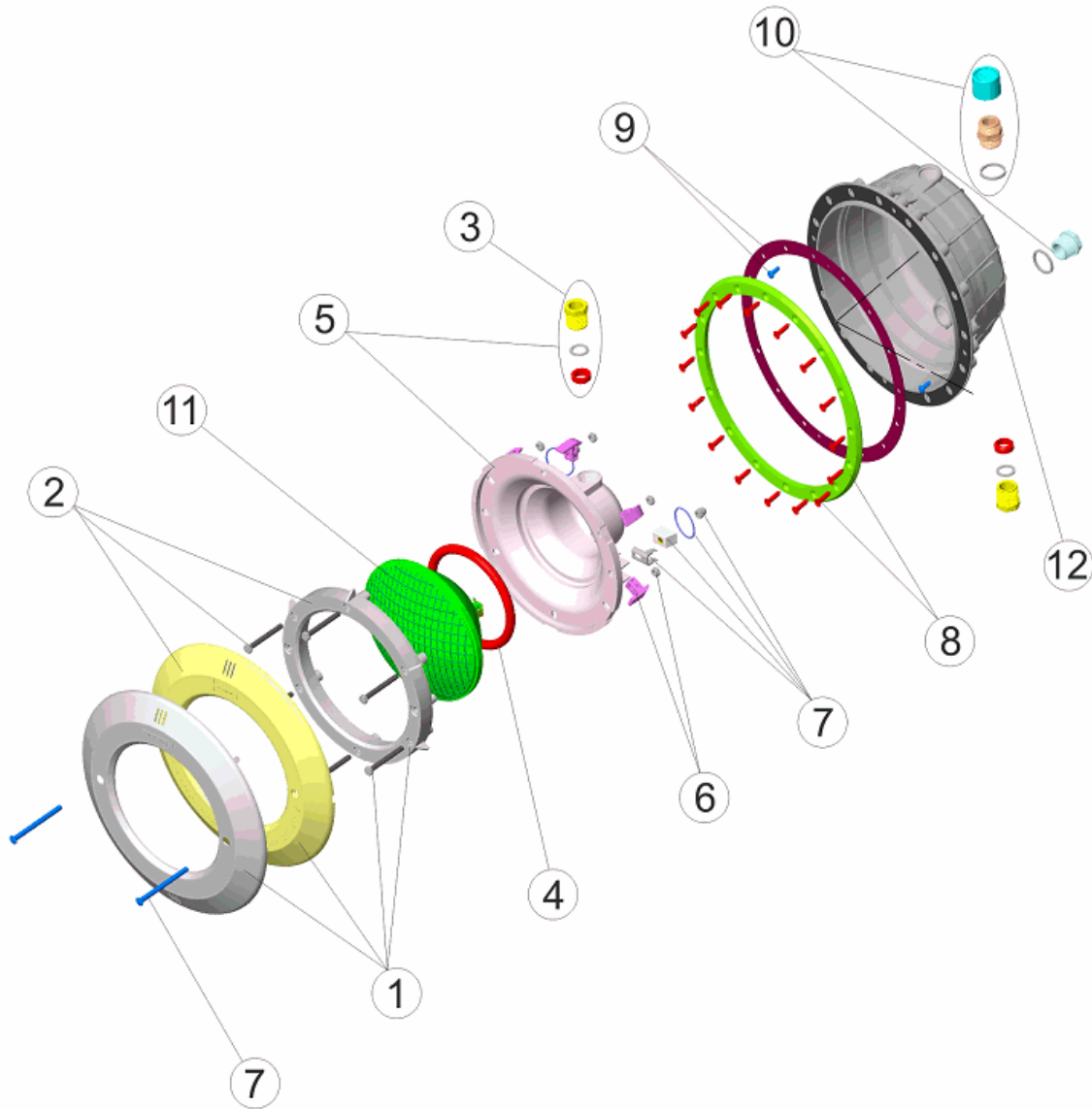


CODIGO 07851, 07852, 21079

DESCRIPCION: PROY. STD. NICHOPP. EMB. INOX, BLANCO Y PARKER



ESPAÑOL

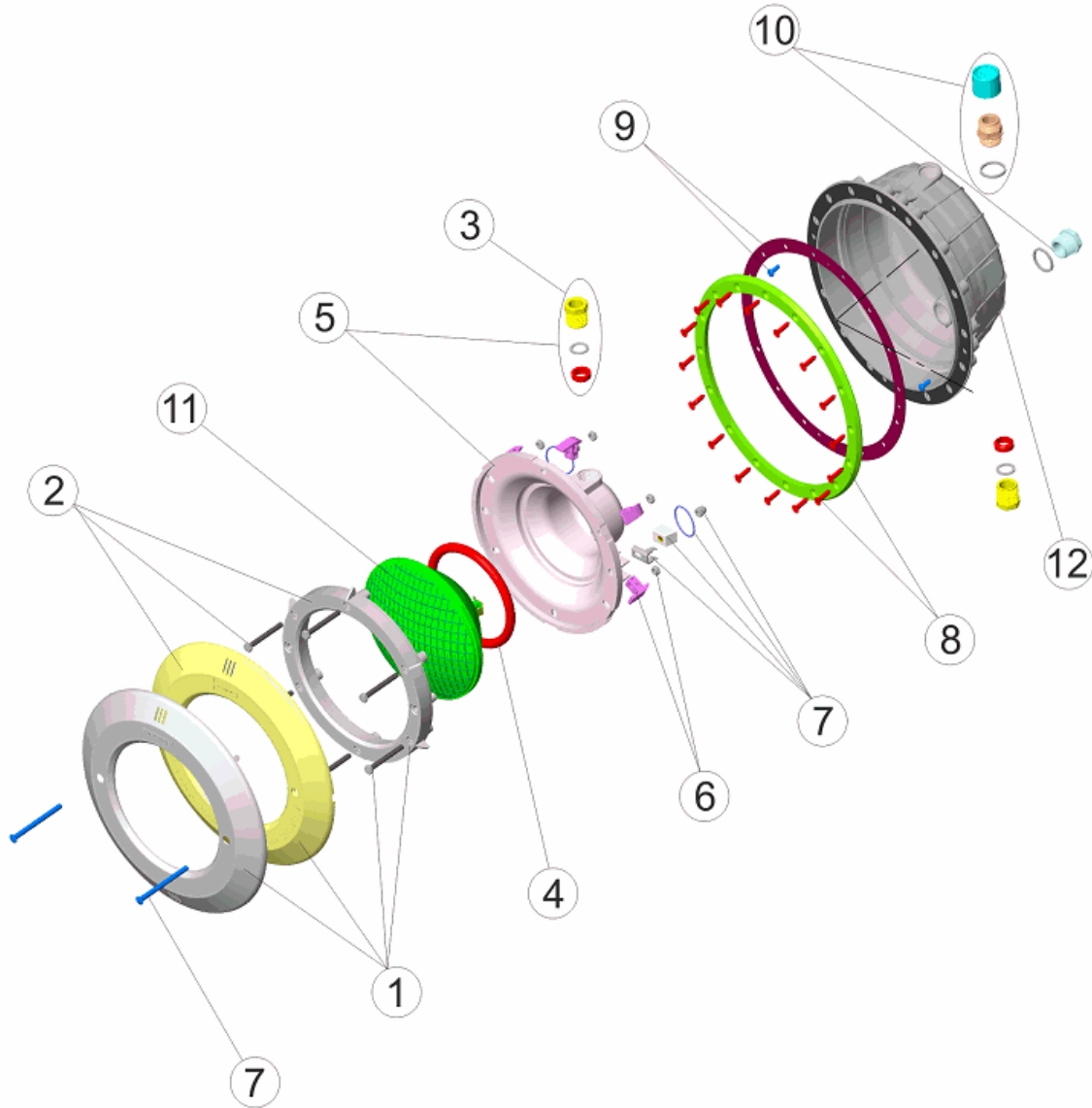
POS	CODIGO	DESCRIPCION	POS	CODIGO	DESCRIPCION
1	* 4403010301	ARO INOX. PROYECTOR	8	* 4403012411	ARO PROYECTOR PISC. PREF.
2	* 4403010302	ARO BLANCO PROYECTOR	8	* 4403012416	ARO PROYECTOR PISC. PREF. TOR. PARKER
3	4403010312	PRENSAESTOPAS FOCO PROYECTOR M-25	9	4403012412	JUNTA ADHESIVA PROYECTOR
4	4403010304	JUNTA TORICA PROYECTOR	10	4403010313	PRENSAESTOPAS CUERPO PROYECTOR M-25
5	4403010305	FONDO FOCO PROYECTOR HALOGENO	11	4403010058	LAMPARA 300W.12.V.
6	4403010306	CLIP FIJACION PROYECTOR	12	* 07856R0200	NICHO PROYECTOR STD. M-25 BI MATERIAL
7	4403015002	CJTO. FIJACION PROYECTOR JELLY STD. A2	12	* 21079R0001	NICHO PROYECTOR STD M-25 PIS.

CODIGO **07851, 07852, 21079**DESCRIPCION: **PROY. STD. NICHOS PP. EMB. INOX, BLANCO Y PARKER****OBSERVACIONES**

POS	CODIGO	OBSERVACIONES
1	4403010301	PARA 07851
2	4403010302	PARA 07852, 21079
8	4403012411	PARA 07851, 07852
8	4403012416	PARA 21079
12	07856R0200	PARA 07851, 07852
12	21079R0001	PARA 21079

CODE 07851, 07852, 21079

DESCRIPTION: PROJ. STD. NICHE PP. ENJ. INOX, BLANC ET PARKER



FRANCAIS

POS	CODE	DESCRIPTION	POS	CODE	DESCRIPTION
1	* 4403010301	ENJOLIVEUR INOX DE PROJECTEUR	8	* 4403012411	ANNEALI PROJECTEUR PISCINE LINER
2	* 4403010302	ENJOLIVEUR BLANC DE PROJECTEUR	8	* 4403012416	ANNEALI PROJECTEUR PISCINE LINER PARKER
3	4403010312	PRESSE ETOUPE PROJECTEUR M-25	9	4403012412	JOINT ADHESIF PROJECTEUR
4	4403010304	JOINT TORIQUE PROJECTEUR	10	4403010313	CORPS PRESSE ETOUPE M-25
5	4403010305	NICHE D'AMPOULE DE PROJECTEUR	11	4403010058	LAMPE
6	4403010306	CLIP FIXATION PROJECTEUR	12	* 07856R0200	NICHE PROJECTEUR POUR VIS MÉTRIQUE (GRIFFE
7	4403015002	ENSEMBLE FIXATION PROJECTEUR JELLY STD. A2	12	* 21079R0001	NICHE PROJECTEUR STD M-25 PIS.

CODE **07851, 07852, 21079**

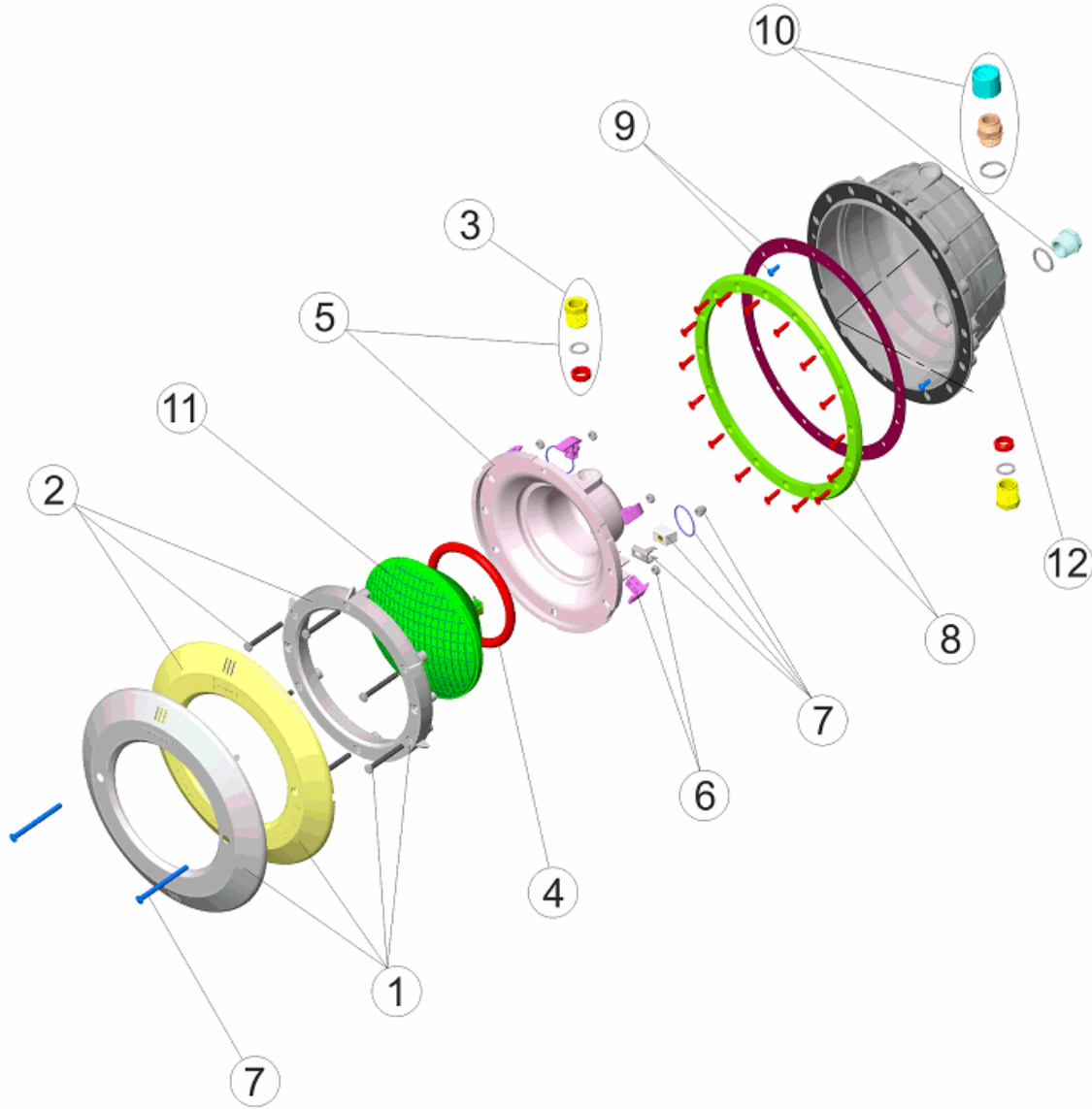
DESCRIPTION: **PROJ. STD. NICHE PP. ENJ. INOX, BLANC ET PARKER**

OBSERVATIONS

POS	CODE	OBSERVATIONS
1	4403010301	PARA 07851
2	4403010302	PARA 07852, 21079
8	4403012411	PARA 07851, 07852
8	4403012416	PARA 21079
12	07856R0200	PARA 07851, 07852
12	21079R0001	PARA 21079

CODE 07851, 07852, 21079

DESCRIPTION: STANDARD POOL LIGHT NICHE STAINLESS STEEL COVER WHITE AND PARKER



ENGLISH

POS	CODE	DESCRIPTION	POS	CODE	DESCRIPTION
1	* 4403010301	S.S. FACEPLATE AND SECURING RING	8	* 4403012411	LIGHT RIM
2	* 4403010302	WHITE FACEPLATE	8	* 4403012416	LIGHT RIM PARKER
3	4403010312	PACKING GLAND M-25	9	4403012412	LIGHT ADHESIVE GASKET
4	4403010304	LIGHT O RING	10	4403010313	BODY PACKING GLAND M-25
5	4403010305	BACK COVER	11	4403010058	LIGHTBULB
6	4403010306	LIGHT FIXING CLIP	12	* 07856R0200	BIMATERIAL METRIC PITCH HOUSING
7	4403015002	FIXING SET UNDERWATER LIGHT JELLY STD. A2	12	* 21079R0001	STD M-25 PIS. LIGHT NICHE

CODE **07851, 07852, 21079**

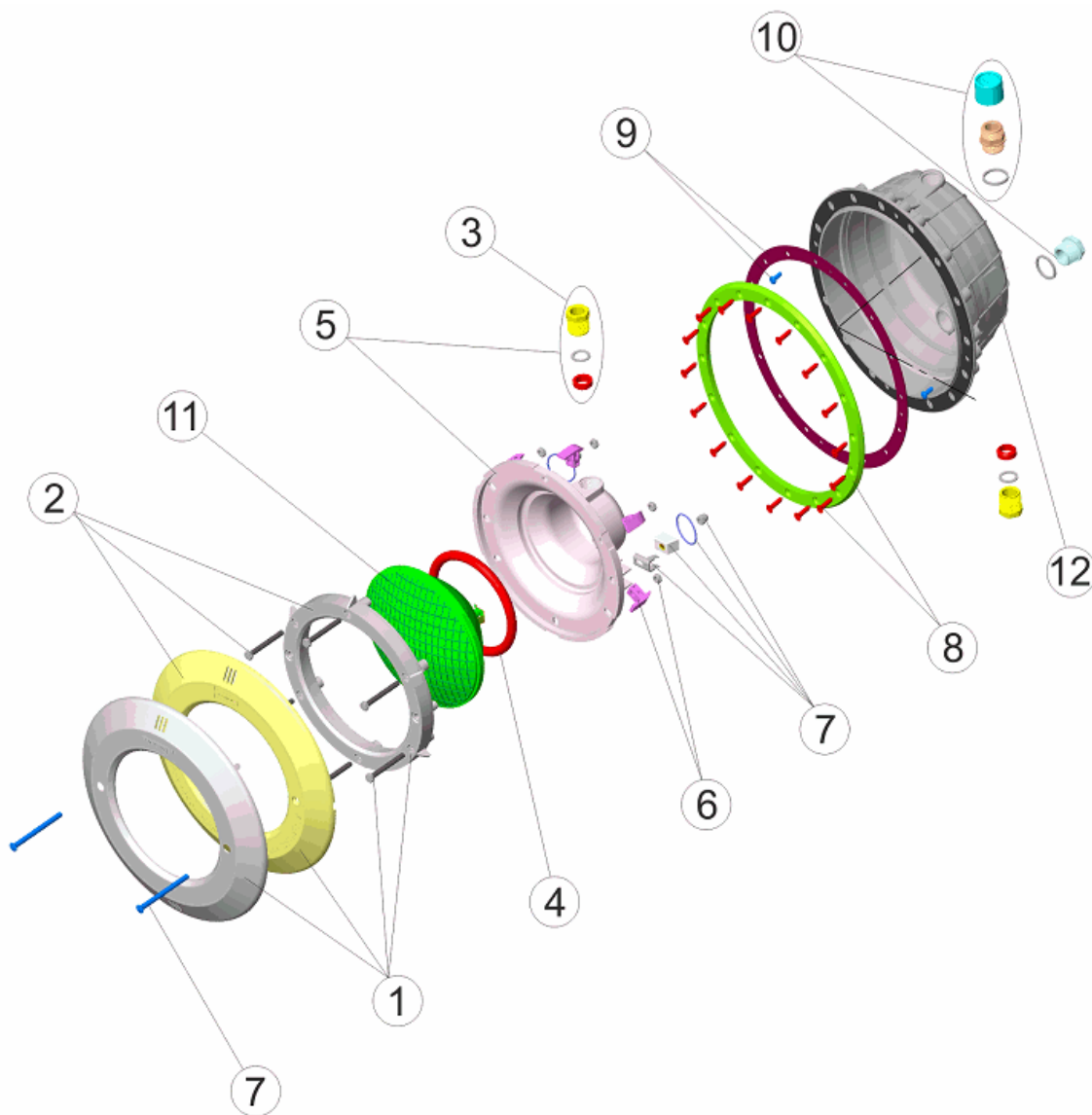
DESCRIPTION: **STANDARD POOL LIGHT NICHE STAINLESS STEEL COVER WHITE AND PARKER**

OBSERVATIONS

POS	CODE	OBSERVATIONS
1	4403010301	PARA 07851
2	4403010302	PARA 07852, 21079
8	4403012411	PARA 07851, 07852
8	4403012416	PARA 21079
12	07856R0200	PARA 07851, 07852
12	21079R0001	PARA 21079

CODICE 07851, 07852, 21079

DESCRIZIONE: PROIETTORE STANDARD NICCHIA PP. PLACCA INOX, BIANCO E PARKER



ITALIANO

POS	CODICE	DESCRIZIONE	POS	CODICE	DESCRIZIONE
1	* 4403010301	FLANGIA INOX FARO	8	* 4403012411	COPRIFLANGIA FARO P.F.
2	* 4403010302	FLANGIA BIANCA FARO	8	* 4403012416	COPRIFLANGIA FARO P.F. PARKER
3	4403010312	PRESSACAVI M-25	9	4403012412	GUARNIZIONE ADESIVA FARO
4	4403010304	O-RING FARO	10	4403010313	PRESSACAVI CORPO M-25
5	4403010305	COPPA FARO	11	4403010058	LAMPADINA
6	4403010306	CLIP FISSAGGIO FARO	12	* 07856R0200	NICCHIA BIMATERIALE A FILETTO METRICO
7	4403015002	KIT FISSAGGIO PROIETTORE JELLY STD. A2	12	* 21079R0001	NICCHIA PROIETTORE STD M-25 PIS.

CODICE **07851, 07852, 21079**

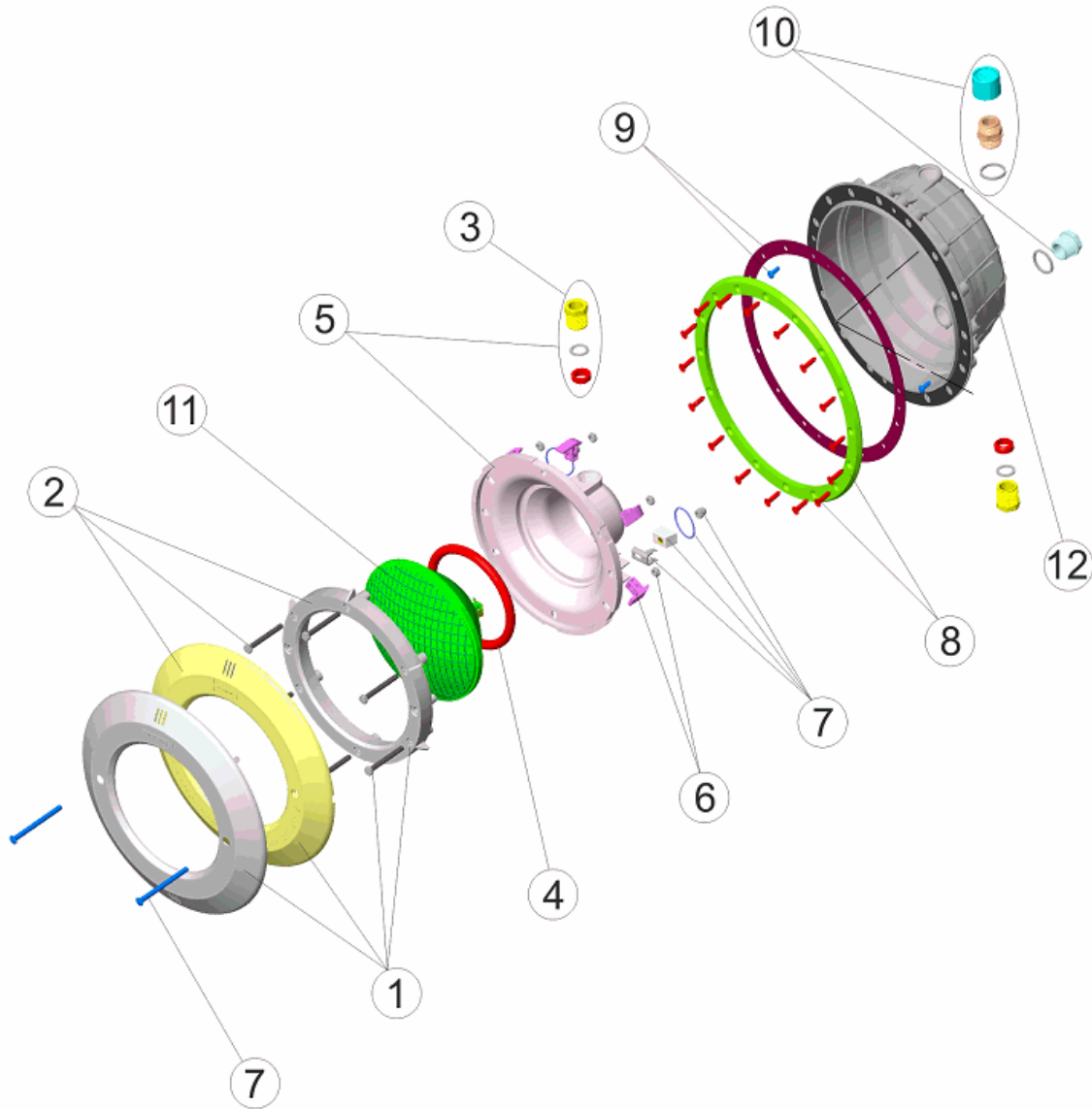
DESCRIZIONE: **PROIETTORE STANDARD NICCHIA PP. PLACCA INOX, BIANCO E PARKER**

OSSERVAZIONI

POS	CODICE	OSSERVAZIONI
1	4403010301	PARA 07851
2	4403010302	PARA 07852, 21079
8	4403012411	PARA 07851, 07852
8	4403012416	PARA 21079
12	07856R0200	PARA 07851, 07852
12	21079R0001	PARA 21079

CODE 07851, 07852, 21079

BESCHREIBUNG: SCHEINWERFER STANDARD NISCHE PP ZIERKAPPE ROSTFREI, WEISS UND



DEUTSCH

POS	CODE	BESCHREIBUNG	POS	CODE	BESCHREIBUNG
1	* 4403010301	BLENDE UWS EDELSTAHL	8	* 4403012411	RING UWS FOLIENBECKEN
2	* 4403010302	BLENDE WEISS UWS	8	* 4403012416	RING UWS FOLIENBECKEN PARKER
3	4403010312	QUETSCHVERSCHRAUBUNG GEHÄUSE UWS M-25	9	4403012412	DICHTUNG FLANSCH UWS
4	4403010304	O-RING UWS	10	4403010313	WANDDURCHFÜHRUNG UWS M-25
5	4403010305	BEFESTIGUNGSRINGSATZ UWS	11	4403010058	LAMPE
6	4403010306	BEFESTIGUNGSCLIPSATZ UWS	12	* 07856R0200	BIMATERIELLE NISCHE MIT METRISCHER WINDUNG
7	4403015002	BEFESTIGUNGSSET SCHEINWERFER JELLY STD. A2	12	* 21079R0001	STD M-25 PIS. NISCHE SCHEINWERFER

CODE **07851, 07852, 21079**

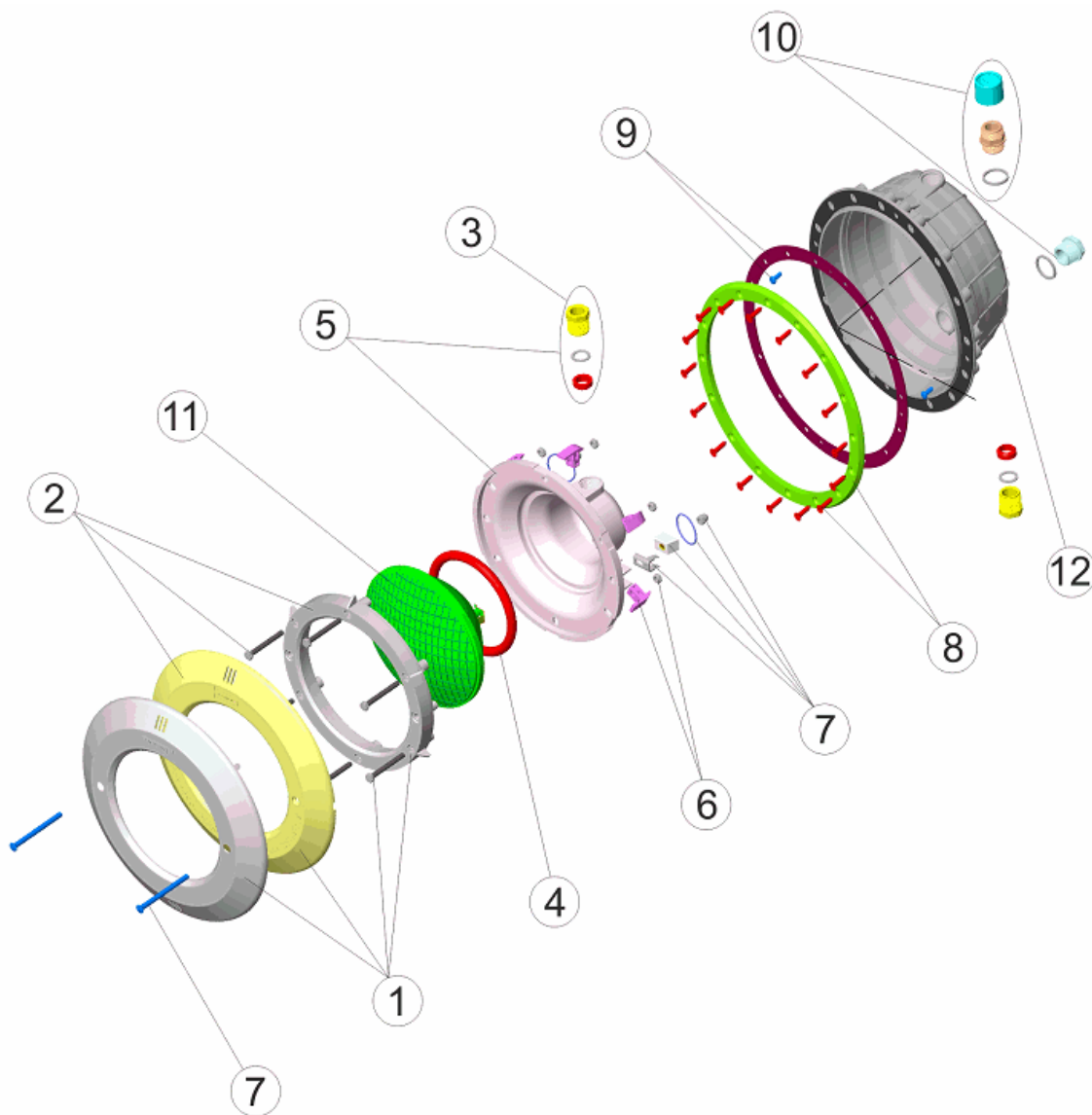
BESCHREIBUNG: **SCHEINWERFER STANDARD NICHE PP ZIERKAPPE ROSTFREI, WEISS UND**

HINWEISE

POS	CODE	HINWEISE
1	4403010301	PARA 07851
2	4403010302	PARA 07852, 21079
8	4403012411	PARA 07851, 07852
8	4403012416	PARA 21079
12	07856R0200	PARA 07851, 07852
12	21079R0001	PARA 21079

CODIGO 07851, 07852, 21079

DESCRIÇÃO: PROJ. STD. NICHU PP. PL. DEC. INOX, BRANCO E PARKER



PORTUGUES

POS	CODIGO	DESCRIÇÃO	POS	CODIGO	DESCRIÇÃO
1	* 4403010301	ARO INOX PROJECTOR	8	* 4403012411	ARO PROJECTOR PISC. PRÉF.
2	* 4403010302	ARO BRANCO PROJECTOR	8	* 4403012416	ARO PROJECTOR PISC. PRÉF. PARKER
3	4403010312	BUCIN FOCO M-25	9	4403012412	JUNTA ADESIVA PROJECTOR
4	4403010304	JUNTA TÓRICA PROJECTOR	10	4403010313	BUCIN CORPO M-25
5	4403010305	FUNDO FOCO PROJECTOR	11	4403010058	BOMBILHA
6	4403010306	CLIP FIXAÇÃO PROJECTOR	12	* 07856R0200	NICHU BIMATERIAL COM ROSCA METRICA
7	4403015002	CONJUNTO FIXAÇÃO PROJECTOR JELLY STD. A2	12	* 21079R0001	NICHU PROJECTOR STD M-25 PIS.

CODIGO 07851, 07852, 21079

DESCRIÇÃO: PROJ. STD. NICHOS PP. PL. DEC. INOX, BRANCO E PARKER

OBSERVAÇÕES

POS	CODIGO	OBSERVAÇÕES
1	4403010301	PARA 07851
2	4403010302	PARA 07852, 21079
8	4403012411	PARA 07851, 07852
8	4403012416	PARA 21079
12	07856R0200	PARA 07851, 07852
12	21079R0001	PARA 21079