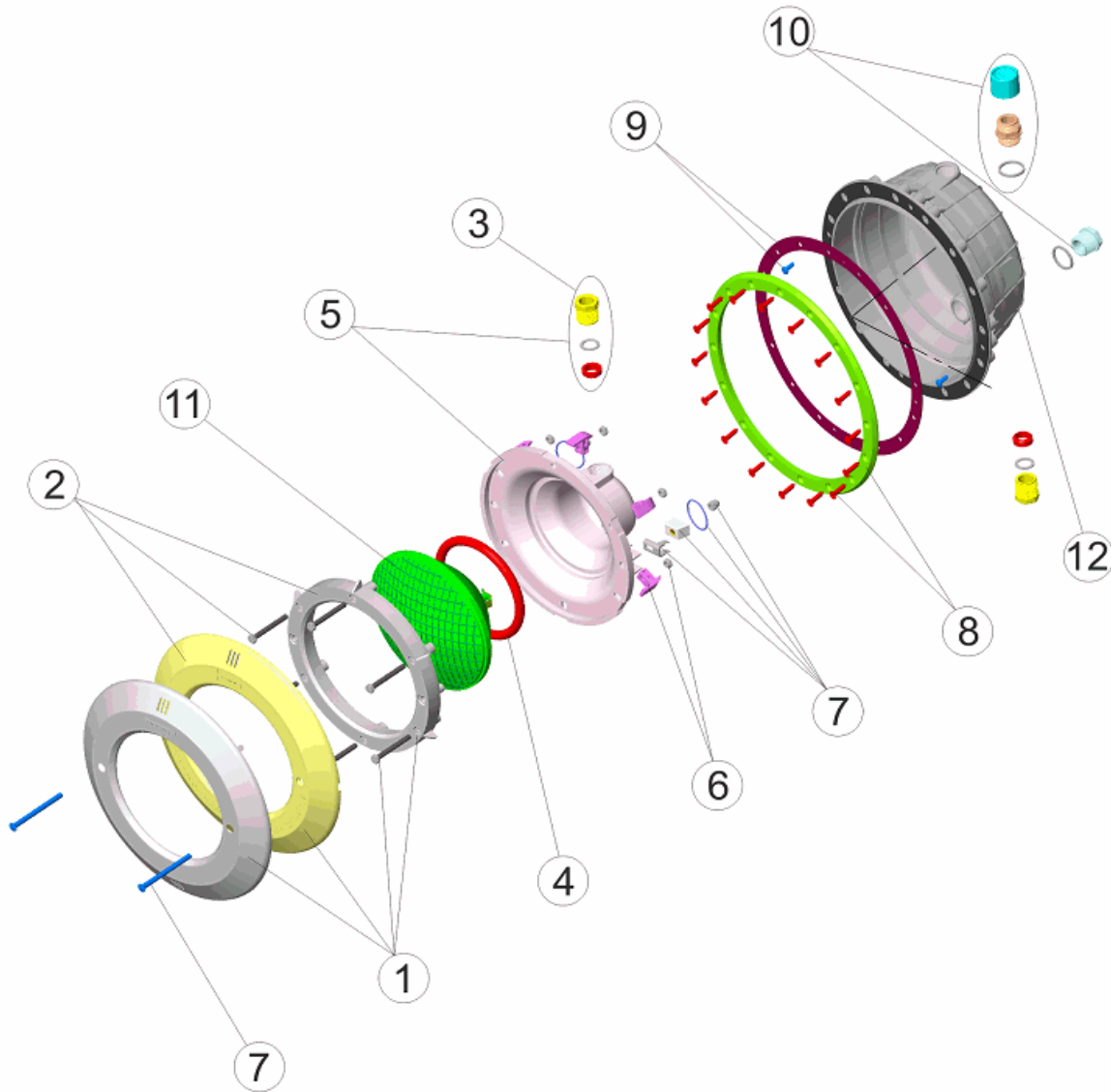


CODE **07851, 07852, 21079**

BESCHREIBUNG: **SCHEINWERFER STANDARD NICHE PP ZIERKAPPE ROSTFREI, WEISS UND PARKER**



**DEUTSCHE**

| POS | CODE         | BESCHREIBUNG                               | POS | CODE         | BESCHREIBUNG                              |
|-----|--------------|--|-----|--------------|---|
| 1   | * 4403010301 | BLLENDE UWS EDELSTAHL                      | 8   | * 4403012411 | RING UWS FOLIENBECKEN                     |
| 2   | * 4403010302 | BLLENDE WEISS UWS                          | 8   | * 4403012416 | RING UWS FOLIENBECKEN PARKER              |
| 3   | 4403010312   | QUETSCHVERSCHRAUBUNG GEHÄUSE UWS M-25      | 9   | 4403012412   | DICHTUNG FLANSCH UWS                      |
| 4   | 4403010304   | O-RING UWS                                 | 10  | 4403010313   | WANDDURCHFÜHRUNG UWS M-25                 |
| 5   | 4403010305   | BEFESTIGUNGRINGSATZ UWS                    | 11  | 4403010058   | LAMPE                                     |
| 6   | 4403010306   | BEFESTIGUNGSCLIPSATZ UWS                   | 12  | * 07856R0200 | BIMATERIELLE NICHE MIT METRISCHER WINDUNG |
| 7   | 4403015002   | BEFESTIGUNGSSET SCHEINWERFER JELLY STD. A2 | 12  | * 21079R0002 | SELBSTSCHRAUBENDER BIMATERIELLE NICHE     |

CODE **07851, 07852, 21079**

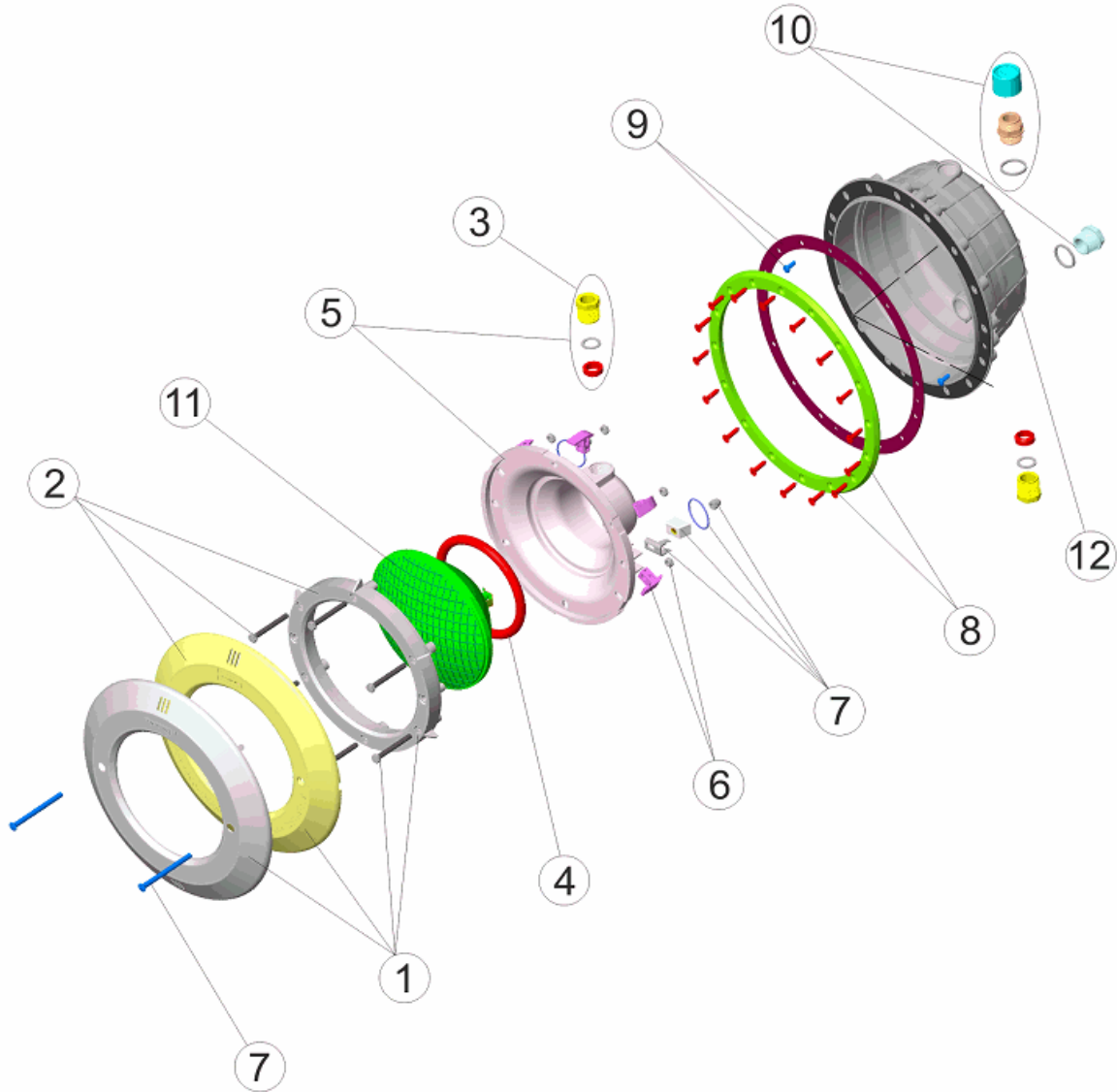
BESCHREIBUNG: **SCHEINWERFER STANDARD NISCHE PP ZIERKAPPE ROSTFREI,  
 WEISS UND PARKER**

**HINWEISE**

| POSICIÓN | PIEZA      | OBSERVACIÓN       |
|----------|------------|-------------------|
| 1        | 4403010301 | PARA 07851        |
| 2        | 4403010302 | PARA 07852, 21079 |
| 8        | 4403012411 | PARA 07851, 07852 |
| 8        | 4403012416 | PARA 21079        |
| 12       | 07856R0200 | PARA 07851, 07852 |
| 12       | 21079R0002 | PARA 21079        |

CODE **07851, 07852, 21079**

DESCRIPTION: **STANDARD POOL LIGHT NICHE STAINLESS STEEL COVER  
WHITE AND PARKER**



**ENGLISH**

| POS | CODE         | DESCRIPTION                               | POS | CODE         | DESCRIPTION                       |
|-----|--------------|---|-----|--------------|-----------------------------------|
| 1   | * 4403010301 | S.S. FACEPLATE AND SECURING RING          | 8   | * 4403012411 | LIGHT RIM                         |
| 2   | * 4403010302 | WHITE FACEPLATE                           | 8   | * 4403012416 | LIGHT RIM PARKER                  |
| 3   | 4403010312   | PACKING GLAND M-25                        | 9   | 4403012412   | LIGHT ADHESIVE GASKET             |
| 4   | 4403010304   | LIGHT O RING                              | 10  | 4403010313   | BODY PACKING GLAND M-25           |
| 5   | 4403010305   | BACK COVER                                | 11  | 4403010058   | LIGHTBULB                         |
| 6   | 4403010306   | LIGHT FIXING CLIP                         | 12  | * 07856R0200 | BIMATERIAL METRIC PITCH HOUSING   |
| 7   | 4403015002   | FIXING SET UNDERWATER LIGHT JELLY STD. A2 | 12  | * 21079R0002 | BIMATERIAL SELF-THREADING HOUSING |

CODE **07851, 07852, 21079**

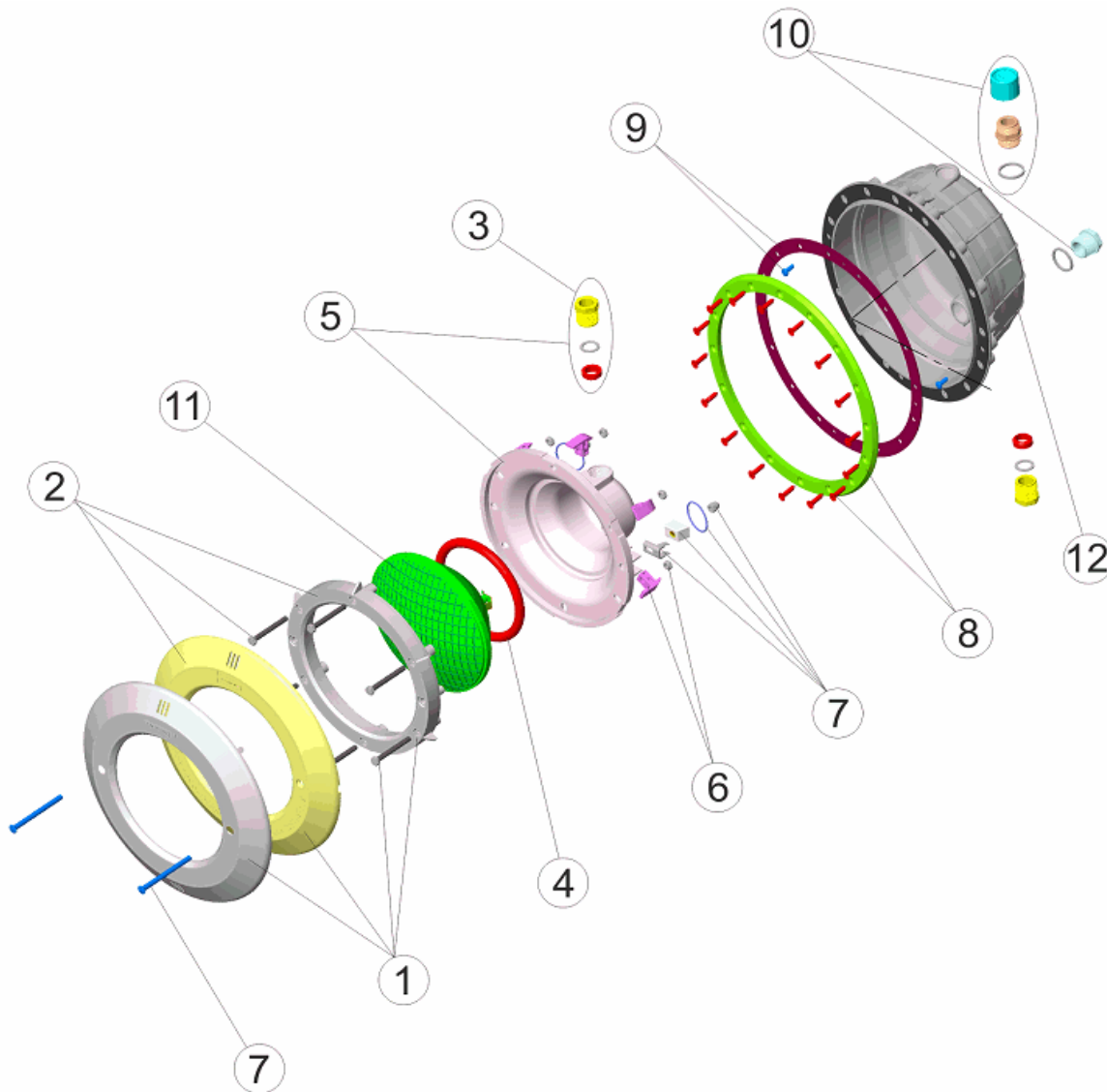
DESCRIPTION: **STANDARD POOL LIGHT NICHE STAINLESS STEEL COVER  
 WHITE AND PARKER**

**OBSERVATIONS**

| POSICIÓN | PIEZA      | OBSERVACIÓN       |
|----------|------------|-------------------|
| 1        | 4403010301 | PARA 07851        |
| 2        | 4403010302 | PARA 07852, 21079 |
| 8        | 4403012411 | PARA 07851, 07852 |
| 8        | 4403012416 | PARA 21079        |
| 12       | 07856R0200 | PARA 07851, 07852 |
| 12       | 21079R0002 | PARA 21079        |

CODIGO **07851, 07852, 21079**

DESCRIPCION: **PROY. STD. NICHU PP. EMB. INOX, BLANCO Y PARKER**



**ESPAÑOL**

| POS | CODIGO       | DESCRIPCION                            | POS | CODIGO       | DESCRIPCION                            |
|-----|--------------|--|-----|--------------|--|
| 1   | * 4403010301 | ARO INOX. PROYECTOR                    | 8   | * 4403012411 | ARO PROYECTOR PISC. PREF.              |
| 2   | * 4403010302 | ARO BLANCO PROYECTOR                   | 8   | * 4403012416 | ARO PROYECTOR PISC. PREF. TOR. PARKER  |
| 3   | 4403010312   | PRENSAESTOPAS FOCO PROYECTOR M-25      | 9   | 4403012412   | JUNTA ADHESIVA PROYECTOR               |
| 4   | 4403010304   | JUNTA TORICA PROYECTOR                 | 10  | 4403010313   | PRENSAESTOPAS CUERPO PROYECTOR M-25    |
| 5   | 4403010305   | FONDO FOCO PROYECTOR HALOGENO          | 11  | 4403010058   | LAMPARA 300W.12.V.                     |
| 6   | 4403010306   | CLIP FIJACION PROYECTOR                | 12  | * 07856R0200 | NICHU PROYECTOR STD. M-25 BI MATERIAL  |
| 7   | 4403015002   | CJTO. FIJACION PROYECTOR JELLY STD. A2 | 12  | * 21079R0002 | NICHU PROYECTOR BI MATERIAL PARA 21079 |

**CODIGO 07851, 07852, 21079**

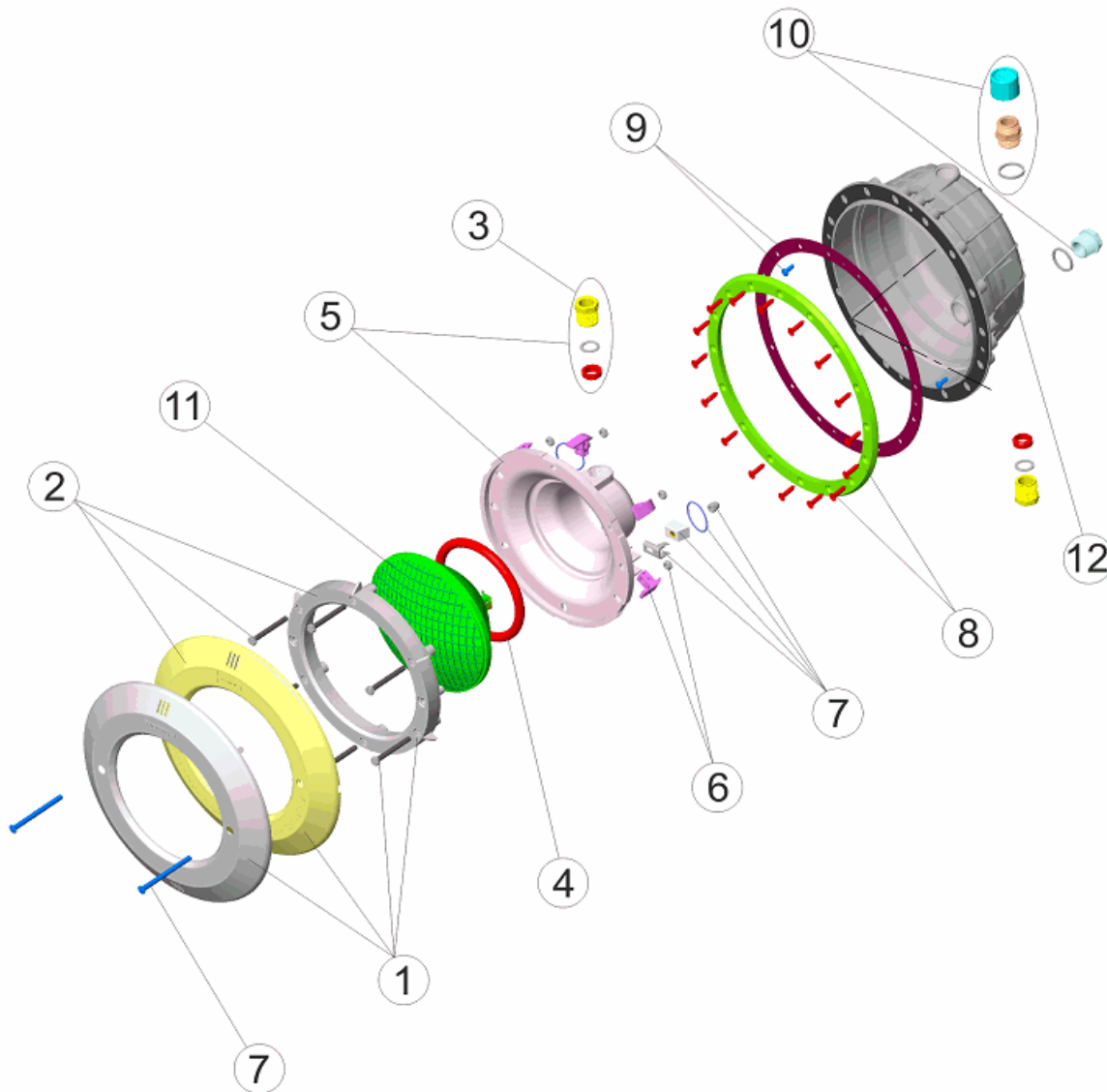
**DESCRIPCION: PROY. STD. NICHOS PP. EMB. INOX, BLANCO Y PARKER**

**OBSERVACIONES**

| POSICIÓN | PIEZA      | OBSERVACIÓN       |
|----------|------------|-------------------|
| 1        | 4403010301 | PARA 07851        |
| 2        | 4403010302 | PARA 07852, 21079 |
| 8        | 4403012411 | PARA 07851, 07852 |
| 8        | 4403012416 | PARA 21079        |
| 12       | 07856R0200 | PARA 07851, 07852 |
| 12       | 21079R0002 | PARA 21079        |

CODE **07851, 07852, 21079**

DESCRIPTION: **PROJ. STD. NICHE PP. ENJ. INOX, BLANC ET PARKER**



**FRANCAIS**

| POS | CODE         | DESCRIPTION                                | POS | CODE         | DESCRIPTION                                 |
|-----|--------------|--|-----|--------------|---|
| 1   | * 4403010301 | ENJOLIVEUR INOX DE PROJECTEUR              | 8   | * 4403012411 | ANNEALI PROJECTEUR PISCINE LINER            |
| 2   | * 4403010302 | ENJOLIVEUR BLANC DE PROJECTEUR             | 8   | * 4403012416 | ANNEALI PROJECTEUR PISCINE LINER PARKER     |
| 3   | 4403010312   | PRESSE ETOUPE PROJECTEUR M-25              | 9   | 4403012412   | JOINT ADHESIF PROJECTEUR                    |
| 4   | 4403010304   | JOINT TORIQUE PROJECTEUR                   | 10  | 4403010313   | CORPS PRESSE ETOUPE M-25                    |
| 5   | 4403010305   | NICHE D'AMPOULE DE PROJECTEUR              | 11  | 4403010058   | LAMPE                                       |
| 6   | 4403010306   | CLIP FIXATION PROJECTEUR                   | 12  | * 07856R0200 | NICHE PROJECTEUR POUR VIS MÉTRIQUE (GRIFFE) |
| 7   | 4403015002   | ENSEMBLE FIXATION PROJECTEUR JELLY STD. A2 | 12  | * 21079R0002 | NICHE PROJECTEUR POUR VIS PARKER (GRIFFE)   |

CODE **07851, 07852, 21079**

DESCRIPTION: **PROJ. STD. NICHE PP. ENJ. INOX, BLANC ET PARKER**

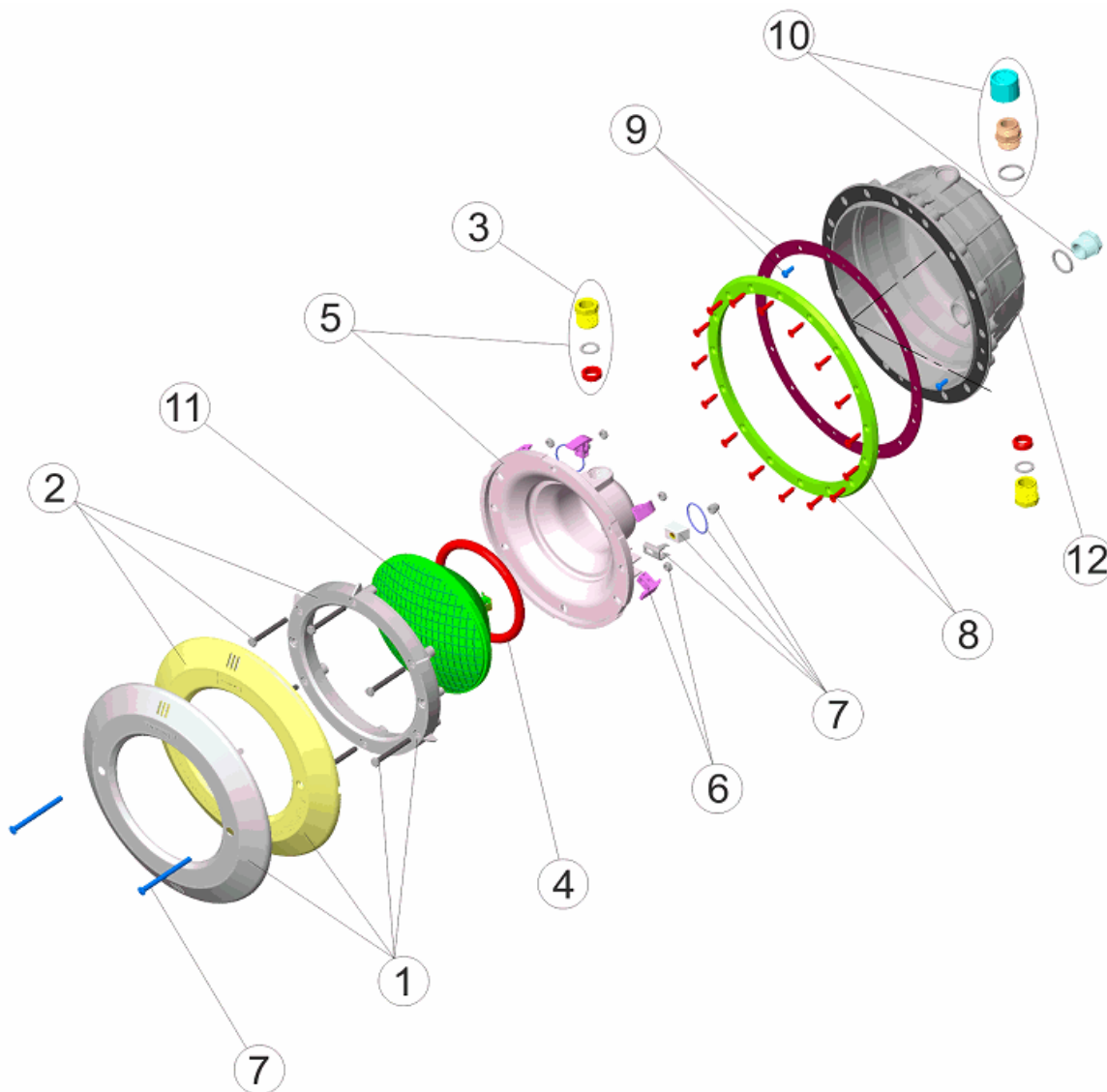
**OBSERVATIONS**

| POSICIÓN | PIEZA      | OBSERVACIÓN       |
|----------|------------|-------------------|
| 1        | 4403010301 | PARA 07851        |
| 2        | 4403010302 | PARA 07852, 21079 |
| 8        | 4403012411 | PARA 07851, 07852 |
| 8        | 4403012416 | PARA 21079        |
| 12       | 07856R0200 | PARA 07851, 07852 |
| 12       | 21079R0002 | PARA 21079        |



CODICE **07851, 07852, 21079**

DESCRIZIONE: **PROIETTORE STANDARD NICCHIA PP. PLACCA INOX, BIANCO E PARKER**



**ITALIANO**

| POS | CODICE       | DESCRIZIONE                            | POS | CODICE       | DESCRIZIONE                           |
|-----|--------------|--|-----|--------------|---------------------------------------|
| 1   | * 4403010301 | FLANGIA INOX FARO                      | 8   | * 4403012411 | COPRIFLANGIA FARO P.F.                |
| 2   | * 4403010302 | FLANGIA BIANCA FARO                    | 8   | * 4403012416 | COPRIFLANGIA FARO P.F. PARKER         |
| 3   | 4403010312   | PRESSACAVI M-25                        | 9   | 4403012412   | GUARNIZIONE ADESIVA FARO              |
| 4   | 4403010304   | O-RING FARO                            | 10  | 4403010313   | PRESSACAVI CORPO M-25                 |
| 5   | 4403010305   | COPPA FARO                             | 11  | 4403010058   | LAMPADINA                             |
| 6   | 4403010306   | CLIP FISSAGGIO FARO                    | 12  | * 07856R0200 | NICCHIA BIMATERIALE A FILETTO METRICO |
| 7   | 4403015002   | KIT FISSAGGIO PROIETTORE JELLY STD. A2 | 12  | * 21079R0002 | NICCHIA BIMATERIALE AUTOFILETTANTE    |

**CODICE**                    **07851, 07852, 21079**

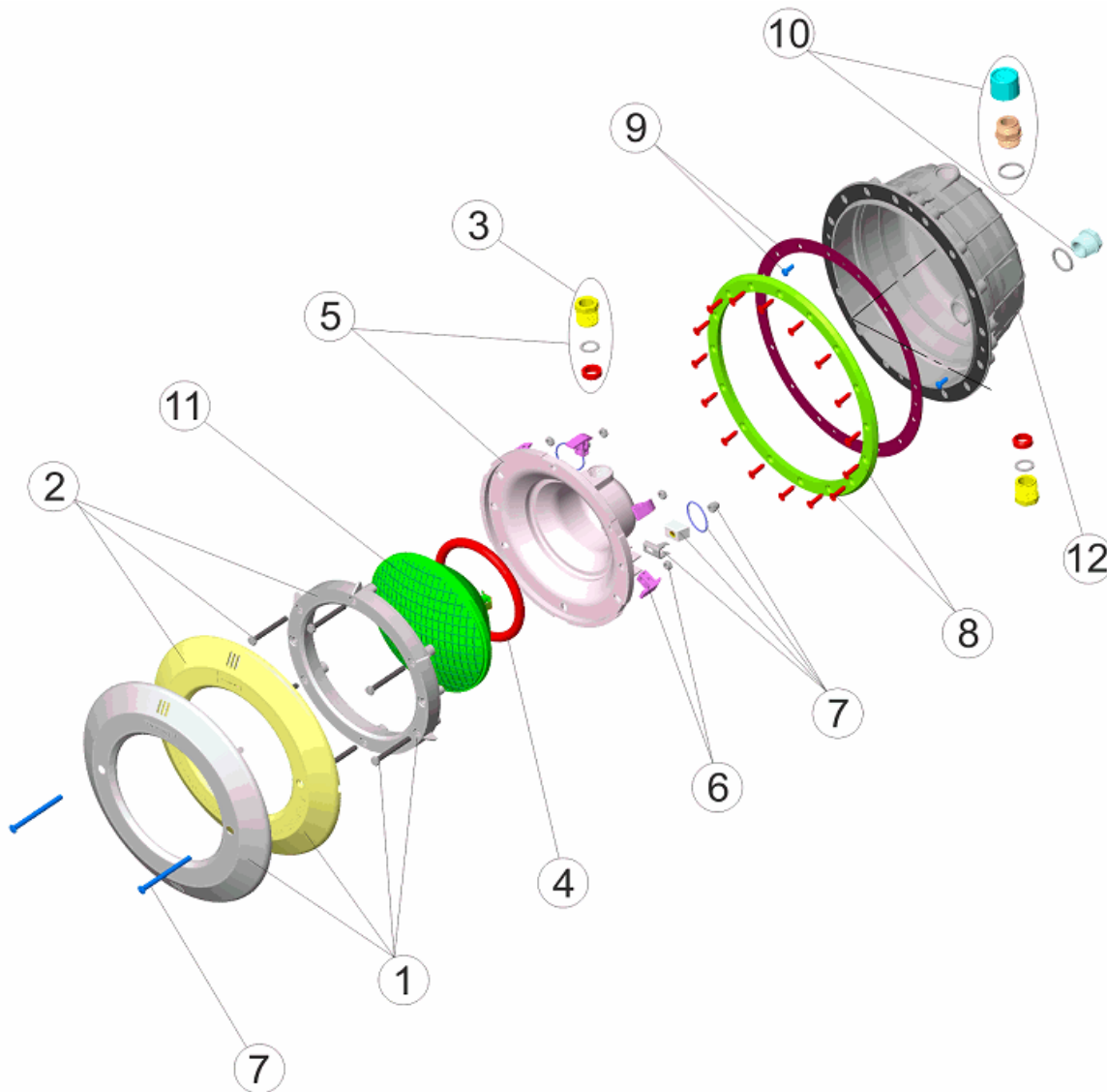
**DESCRIZIONE:**                    **PROIETTORE STANDARD NICCHIA PP. PLACCA INOX, BIANCO E PARKER**

**OSSERVAZIONI**

| POSICIÓN | PIEZA      | OBSERVACIÓN       |
|----------|------------|-------------------|
| 1        | 4403010301 | PARA 07851        |
| 2        | 4403010302 | PARA 07852, 21079 |
| 8        | 4403012411 | PARA 07851, 07852 |
| 8        | 4403012416 | PARA 21079        |
| 12       | 07856R0200 | PARA 07851, 07852 |
| 12       | 21079R0002 | PARA 21079        |

CODIGO **07851, 07852, 21079**

DESCRIÇÃO: **PROJ. STD. NICHU PP. PL. DEC. INOX, BRANCO E PARKER**



**PORTUGUES**

| POS | CODIGO       | DESCRIÇÃO                                | POS | CODIGO       | DESCRIÇÃO                          |
|-----|--------------|--|-----|--------------|------------------------------------|
| 1   | * 4403010301 | ARO INOX PROJECTOR                       | 8   | * 4403012411 | ARO PROJECTOR PISC. PRÉF.          |
| 2   | * 4403010302 | ARO BRANCO PROJECTOR                     | 8   | * 4403012416 | ARO PROJECTOR PISC. PRÉF. PARKER   |
| 3   | 4403010312   | BUCIN FOCO M-25                          | 9   | 4403012412   | JUNTA ADESIVA PROJECTOR            |
| 4   | 4403010304   | JUNTA TÓRICA PROJECTOR                   | 10  | 4403010313   | BUCIN CORPO M-25                   |
| 5   | 4403010305   | FUNDO FOCO PROJECTOR                     | 11  | 4403010058   | BOMBILHA                           |
| 6   | 4403010306   | CLIP FIXAÇÃO PROJECTOR                   | 12  | * 07856R0200 | NICHU BIMATERIAL COM ROSCA METRICA |
| 7   | 4403015002   | CONJUNTO FIXAÇÃO PROJECTOR JELLY STD. A2 | 12  | * 21079R0002 | NICHU BIMATERIAL AUTO-ROSCANTE     |

**CODIGO 07851, 07852, 21079**

**DESCRIÇÃO: PROJ. STD. NICHOS PP. PL. DEC. INOX, BRANCO E PARKER**

**OBSERVAÇÕES**

| POSICIÓN | PIEZA      | OBSERVACIÓN       |
|----------|------------|-------------------|
| 1        | 4403010301 | PARA 07851        |
| 2        | 4403010302 | PARA 07852, 21079 |
| 8        | 4403012411 | PARA 07851, 07852 |
| 8        | 4403012416 | PARA 21079        |
| 12       | 07856R0200 | PARA 07851, 07852 |
| 12       | 21079R0002 | PARA 21079        |