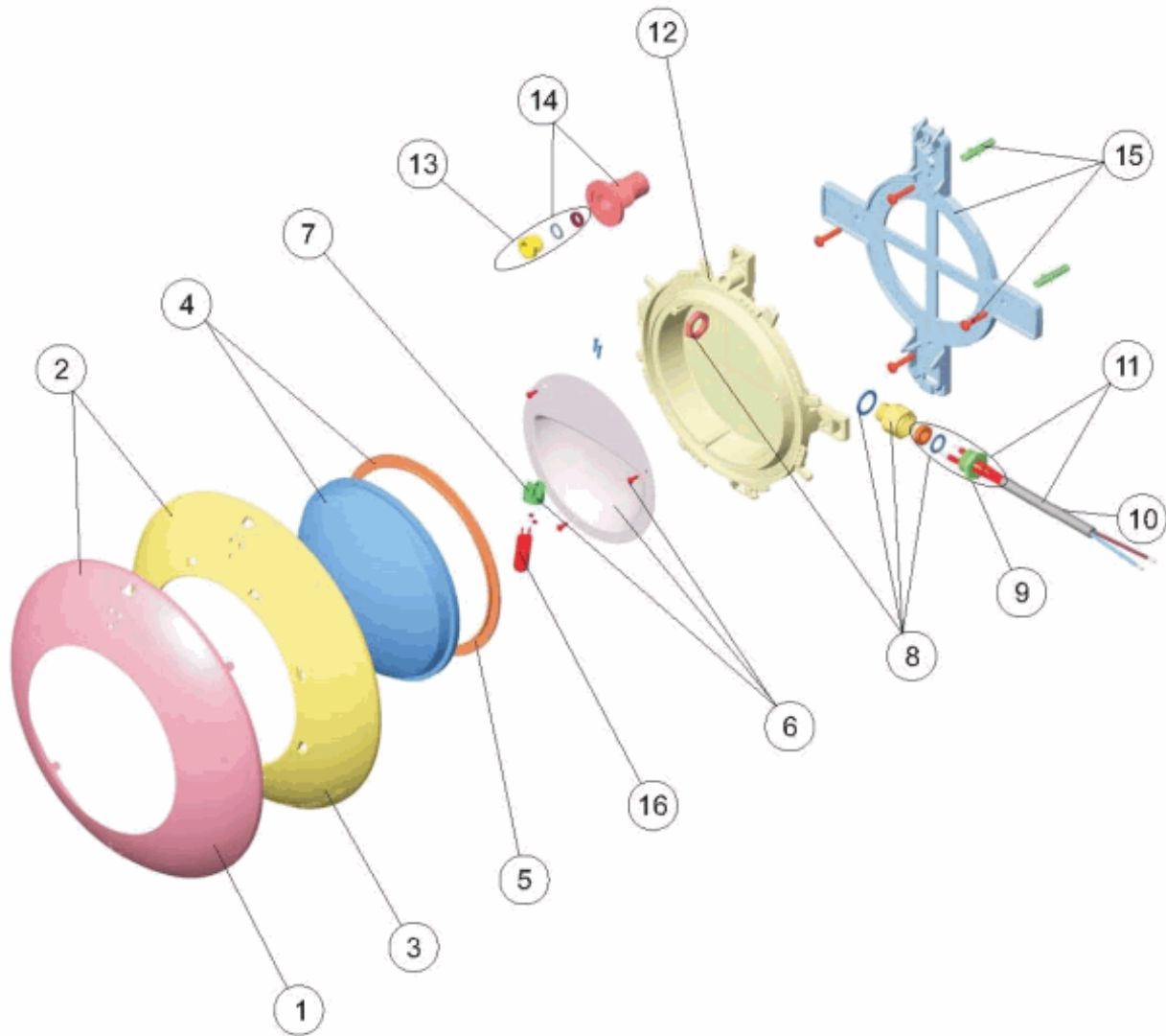


CODE **21626, 35666**

BESCHREIBUNG: **EXTRA FLACHER SCHEINWERFER SCHWIMMBECKEN BETON**



DEUTSCHE

POS	CODE	BESCHREIBUNG	POS	CODE	BESCHREIBUNG
1	* 4403012304	VERZIERUNGSRING ROSTFREI	9	4403014101	KIT STOPFEN QUETSCHDICHTUNG 12X2
2	* 4403012301	SET VERZIERUNGSRING ROSTFREI	10	4403011905	KABEL UWS
3	* 4403011901	"BLENDE UWS "EXTRA FLACH""	11	4403015405	KABEL UWS, QUETSCHDICHTUNG
4	4403012303	SILIKONDICHTUNG + O-RING	12	4403011908	"LAMPENGEHÄUSE UWS "EXTRA FLACH""
5	4403010102	DICHTUNG SILIKON UWS FLACH	13	4403012704	QUETSCHVERSCHRAUBUNG PG-9
6	4403011903	"LAMPENHALTERUNG + REFLEKTOR UWS "EXTRA FLACH""	14	4403011907	"WANDDURCHFÜHRUNG UWS "EXTRA FLACH"" BETON"
7	4403011407	LAMPENFASSUNG	15	4403011906	"BEFESTIGUNGSSATZ UWS "EXTRA FLACH"" BETON"
8	4403012302	SET QUETSCHDICHTUNG M-16 KT 19,5X2	16	4403010069	LAMPE 12 V. 100 W.

CODE **21626, 35666**

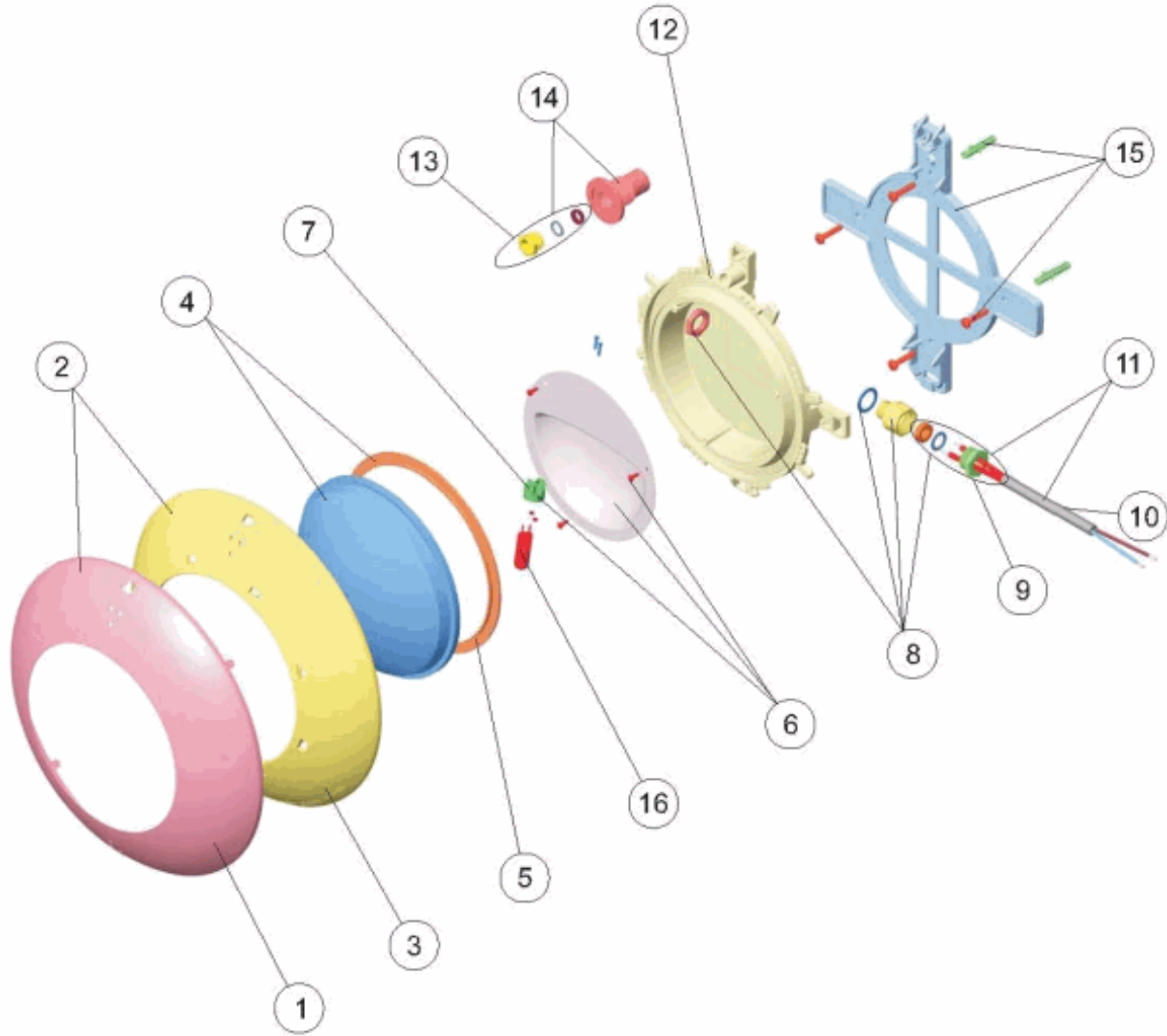
BESCHREIBUNG: **EXTRA FLACHER SCHEINWERFER SCHWIMMBECKEN BETON**

HINWEISE

POSICIÓN	PIEZA	OBSERVACIÓN
1	4403012304	PARA 35666
2	4403012301	PARA 35666
3	4403011901	PARA 21626

CODE **21626, 35666**

DESCRIPTION: **EXTRA-FLAT LIGHT CONCRETE POOL**



ENGLISH

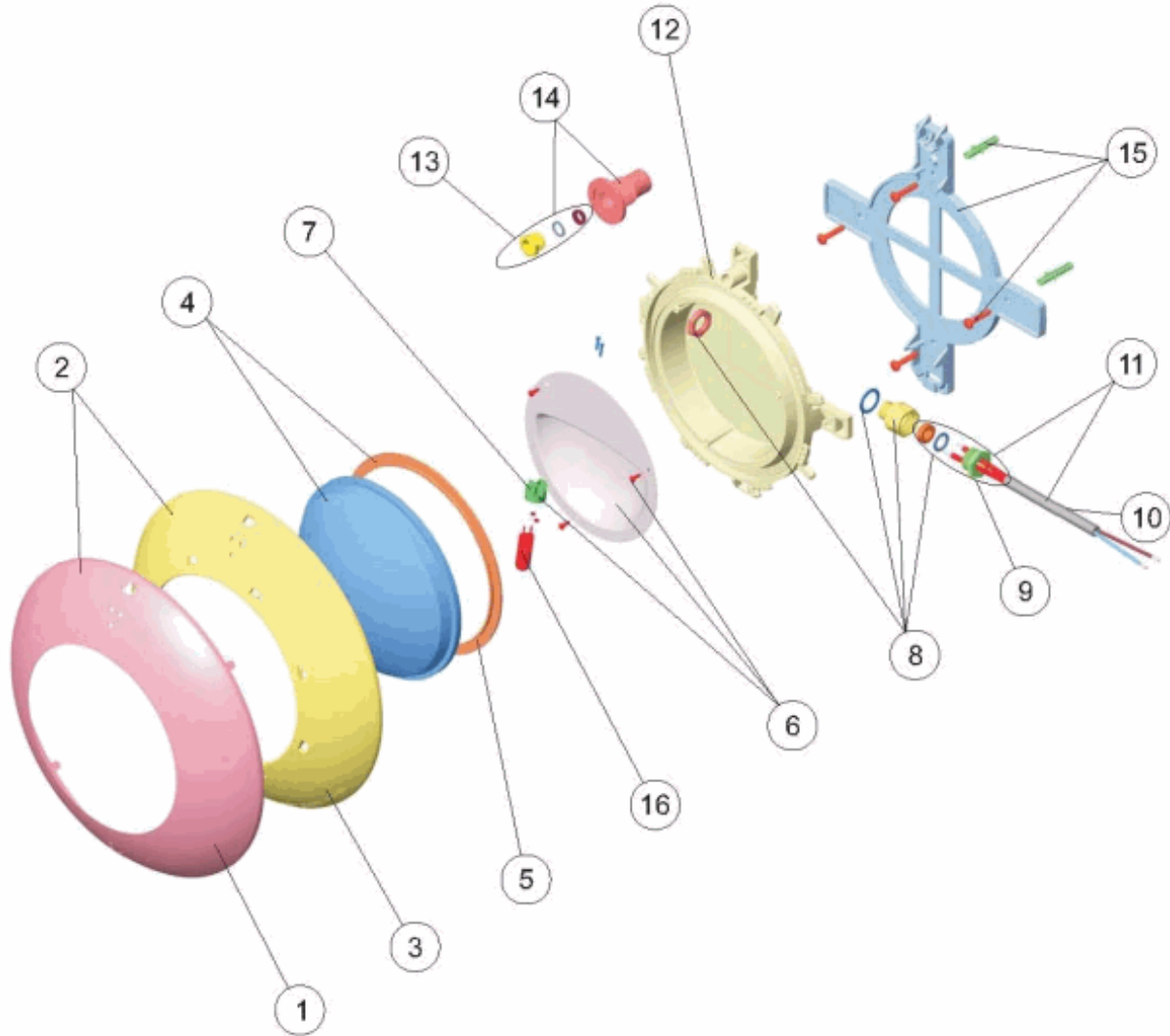
POS	CODE	DESCRIPTION	POS	CODE	DESCRIPTION
1	* 4403012304	RUSTPROOF DECORATIVE RING	9	4403014101	KIT PLUG PACKING GLAND 12X2
2	* 4403012301	SET RUSTPROOF DECORATIVE RING	10	4403011905	LIGHT CABLE
3	* 4403011901	FLAT LIGHT FACEPLATE	11	4403015405	PROJECTOR CABLE, PACKING GLANDS PROJECTOR
4	4403012303	CLEAR LENS + GASKET	12	4403011908	LIGHT BODY
5	4403010102	LIGHT SILICON GASKET	13	4403012704	PACKING GLAND PG-9
6	4403011903	LAMPHOLDER REFLECTOR PLATE	14	4403011907	CONDUIT CONNECTOR
7	4403011407	LAMP HOLDER	15	4403011906	LIGHT SUPPORT
8	4403012302	GLAND SEAL M-16 KT 19,5X2	16	4403010069	LIGHTBULB 12 V. 100 W.

CODE **21626, 35666**DESCRIPTION: **EXTRA-FLAT LIGHT CONCRETE POOL****OBSERVATIONS**

POSICIÓN	PIEZA	OBSERVACIÓN
1	4403012304	PARA 35666
2	4403012301	PARA 35666
3	4403011901	PARA21626

CODIGO **21626, 35666**

DESCRIPCION: **PROYECTOR EXTRA PLANO PISC. HORMIGON**



ESPAÑOL

POS	CODIGO	DESCRIPCION	POS	CODIGO	DESCRIPCION
1	* 4403012304	EMBELLECEDOR INOX PROYECTOR EXTRA PLANO	9	4403014101	CJTO. TAPON PRENSAESTOPAS TR 12X2
2	* 4403012301	CJTO.EMBELLECED.INOX PROJEC.EXTRA PLANO	10	4403011905	CABLE PROYECTOR
3	* 4403011901	EMBELLECEDOR PROYECTOR PLANO	11	4403015405	CABLE PROYECTOR, PRENSAESTOPAS
4	4403012303	LENTE TRANSPARENTE + JUNTA	12	4403011908	CUERPO PROYECTOR
5	4403010102	JUNTA SILICONA PROYECTOR	13	4403012704	PRENSAESTOPAS PG-9
6	4403011903	REFLECTOR PORTALAMPARAS	14	4403011907	PASACABLES
7	4403011407	PORTALAMPARAS	15	4403011906	SOPORTE PROYECTOR
8	4403012302	CJTO. PRENSAESTOPAS M-16 KT 19,5X2	16	4403010069	LAMPARA HALOGENA 12 V. 100 W.

CODIGO **21626, 35666**

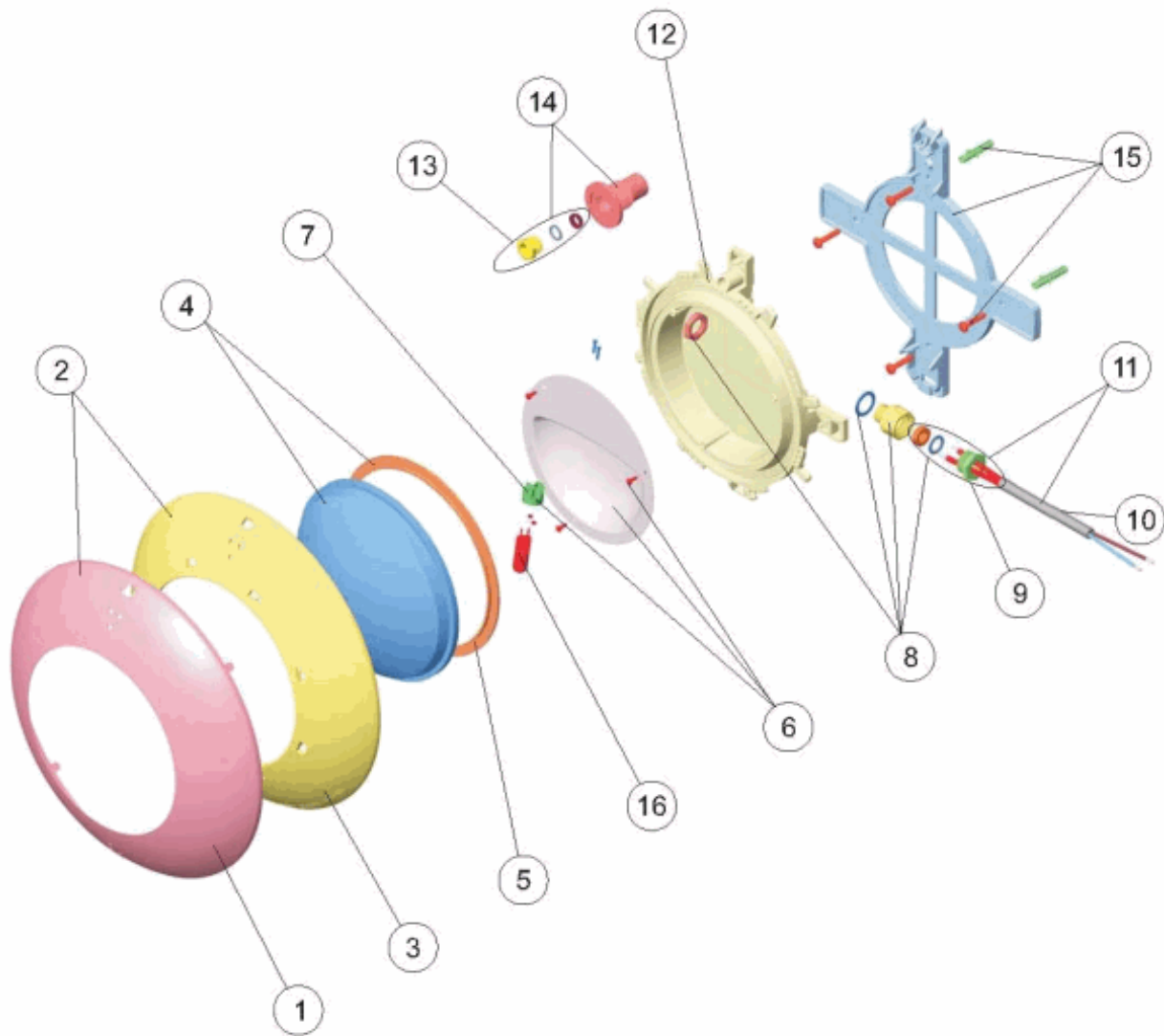
DESCRIPCION: **PROYECTOR EXTRA PLANO PISC. HORMIGON**

OBSERVACIONES

POSICIÓN	PIEZA	OBSERVACIÓN
1	4403012304	PARA 35666
2	4403012301	PARA 35666
3	4403011901	PARA21626

CODE **21626, 35666**

DESCRIPTION: **PROJECTEUR EXTRA-PLAT PISC. BÉTON**



FRANCAIS

POS	CODE	DESCRIPTION	POS	CODE	DESCRIPTION
1	* 4403012304	ANNEAU ENJOLIVER INOX	9	4403014101	BOUCHON PRESSE ÉTOUPE 12X2
2	* 4403012301	ENSEMBLE ANNEAU ENJOLIVER INOX	10	4403011905	CABLE DE PROJECTEUR
3	* 4403011901	ENJOLIVEUR PROJECTEUR PLAT	11	4403015405	CABLE PROJECTEUR PRESSE ÉTOUPE
4	4403012303	LENTE PROJECTEUR + JOINT	12	4403011908	CORPS DU PROJECTEUR
5	4403010102	JOINT SILICONE PROJECTEUR	13	4403012704	PRESSE ETOUPE PG-9
6	4403011903	REFLECTEUR PORTE LAMPE	14	4403011907	PASSE CABLE
7	4403011407	PORTE-LAMPE	15	4403011906	SUPPORT PROJECTEUR
8	4403012302	ENSEMBLE PRESSE ÉTOUPE M-16 KT 19.5X2	16	4403010069	LAMPE 12 V. 100 W.

CODE **21626, 35666**

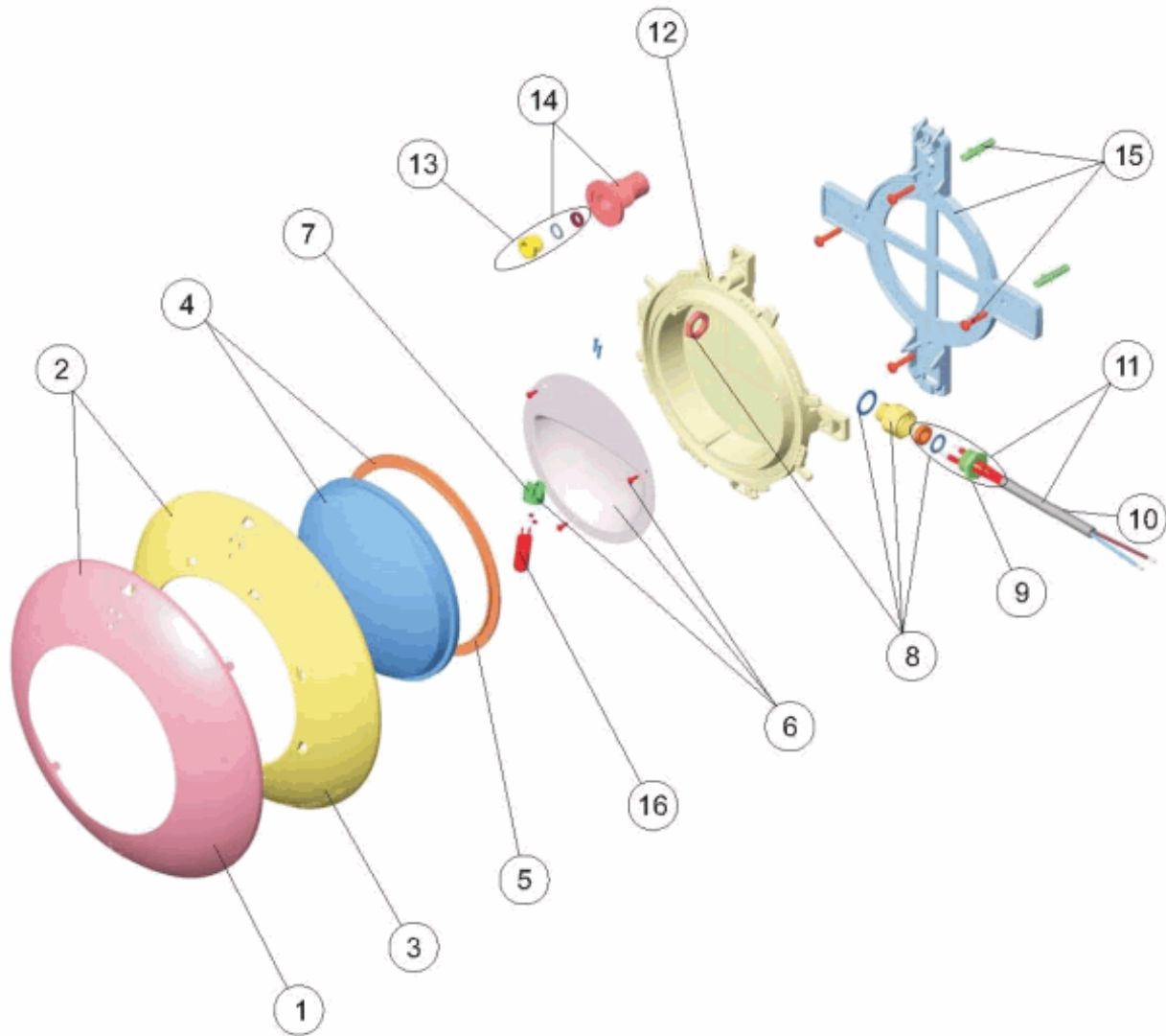
DESCRIPTION: **PROJECTEUR EXTRA-PLAT PISC. BÉTON**

OBSERVATIONS

POSICIÓN	PIEZA	OBSERVACIÓN
1	4403012304	PARA 35666
2	4403012301	PARA 35666
3	4403011901	PARA21626

CODICE **21626, 35666**

DESCRIZIONE: **PROIETTORE EXTRA PIANO PISCINA CEMENTO**



ITALIANO

POS	CODICE	DESCRIZIONE	POS	CODICE	DESCRIZIONE
1	* 4403012304	ANELLO ORNAMENTALE INOSSID.	9	4403014101	KIT TAPPO
2	* 4403012301	KIT ANELLO ORNAMENTALE INOSSID.	10	4403011905	CAVO FARO
3	* 4403011901	ANELLO FRONTALE FARO PIATTO	11	4403015405	CAVO FARO, PRESSACAVO
4	4403012303	LENTE PROIETTORE + GUERNIZIONE	12	4403011908	CORPO FARO
5	4403010102	GUARNIZIONE SILICONE FARO	13	4403012704	PRESSACAVO PG-9
6	4403011903	RIFLETTORE PORTALAMPADE	14	4403011907	PRESSACAVO
7	4403011407	PORTALAMPADE	15	4403011906	SUPPORTO FARO
8	4403012302	KIT PRESSACAVO M-16 KT 19,5X2	16	4403010069	LAMPADINA 12 V. 100 W.

CODICE **21626, 35666**

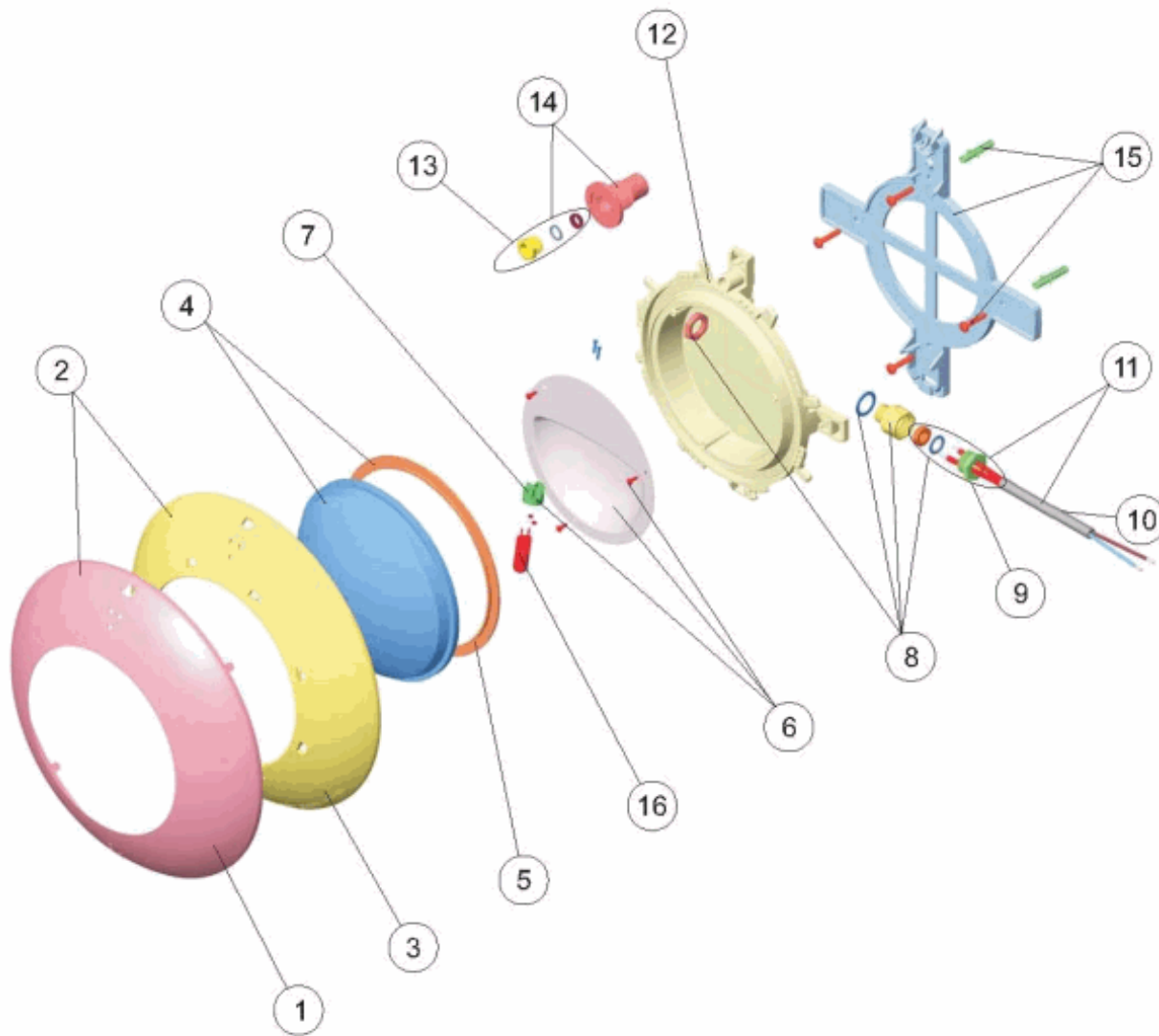
DESCRIZIONE: **PROIETTORE EXTRA PIANO PISCINA CEMENTO**

OSSERVAZIONI

POSICIÓN	PIEZA	OBSERVACIÓN
1	4403012304	PARA 35666
2	4403012301	PARA 35666
3	4403011901	PARA 21626

CODIGO **21626, 35666**

DESCRIÇÃO: **PROJECTOR EXTRA PLANO PISC. BETÃO**



PORTUGUES

POS	CODIGO	DESCRIÇÃO	POS	CODIGO	DESCRIÇÃO
1	* 4403012304	ANEL DECORATIVO INOXIDABLE	9	4403014101	CJTO. TAMPÃO VEDANTE 12X2
2	* 4403012301	CJTO. ANEL DECORATIVO INOXIDABLE	10	4403011905	CABO PROJECTOR
3	* 4403011901	EMBELEZADOR PROJECTOR PLANO	11	4403015405	CABO P'PROJECTOR BUCIM PROJECTOR
4	4403012303	LENTE TRANSPARENTE + JUNTA	12	4403011908	CORPO PROJECTOR
5	4403010102	JUNTA SILICONE PROTECTOR	13	4403012704	BUCIN PG-9
6	4403011903	REFLECTOR PORTA-LÂMPADAS	14	4403011907	PASSA-CABOS
7	4403011407	PORTA-LÂMPADA	15	4403011906	SUPORTE PROJECTOR
8	4403012302	CONJUNTO BUCIM M-16 KT 19,5X2	16	4403010069	BOMBILHA 12 V. 100 W.

CODIGO **21626, 35666**DESCRIÇÃO: **PROJECTOR EXTRA PLANO PISC. BETÃO****OBSERVAÇÕES**

POSICIÓN	PIEZA	OBSERVACIÓN
1	4403012304	PARA 35666
2	4403012301	PARA 35666
3	4403011901	PARA21626