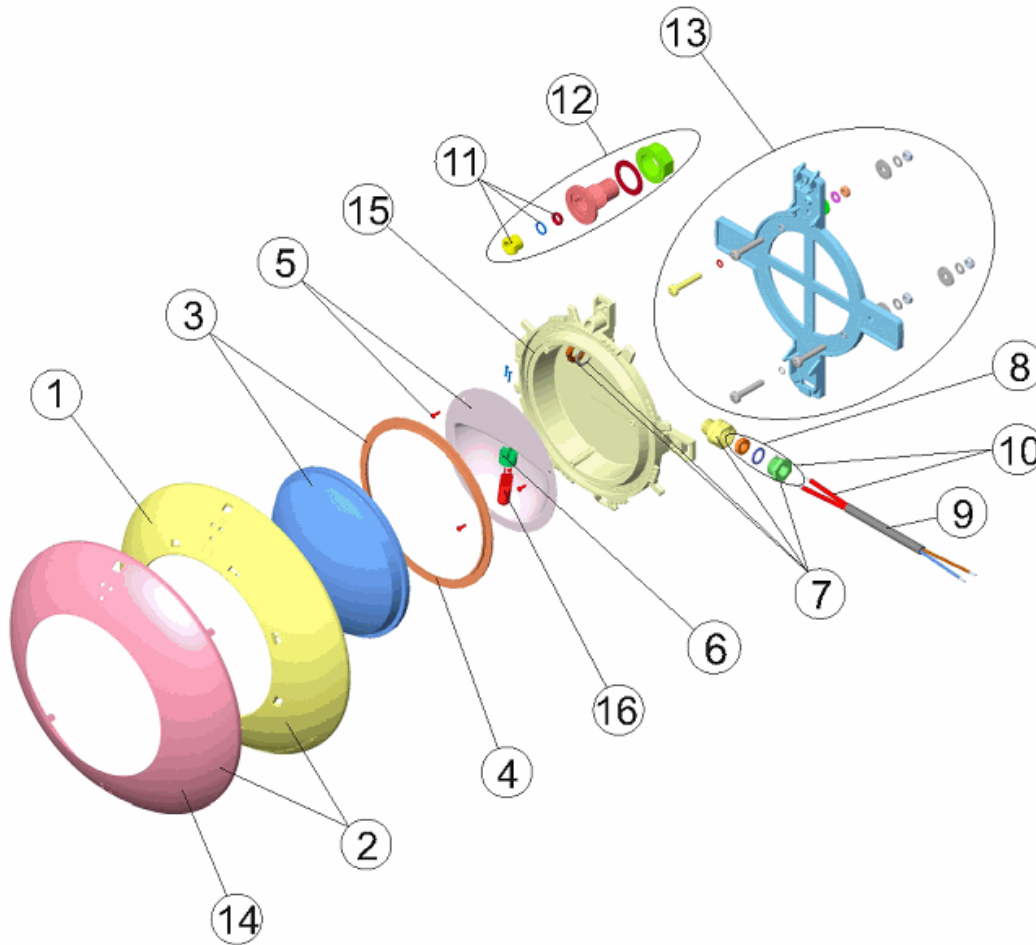


CODE **21627, 35667**

BESCHREIBUNG: **EXTRA FLACHER SCHEINWERFER VORGEFERTIGTES SCHWIMMBECKEN WEISSER RING/ROSTFREI**



DEUTSCHE

POS	CODE	BESCHREIBUNG	POS	CODE	BESCHREIBUNG
1	* 4403011901	"BLENDE UWS ""EXTRA FLACH""	9	4403011905	KABEL UWS
2	* 4403012301	SET VERZIERUNGSRING ROSTFREI	10	4403015405	KABEL UWS, QUETSCHDICHTUNG
3	4403012303	SILIKONDICHTUNG + O-RING	11	4403012704	QUETSCHVERSCHRAUBUNG PG-9
4	4403010102	DICHTUNG SILIKON UWS FLACH	12	4403012306	"WANDDURCHFÜHRUNG UWS ""EXTRA FLACH"" FOLIE"
5	4403011903	"LAMPENHALTERUNG + REFLEKTOR UWS ""EXTRA FLACH""	13	4403012305	"BEFESTIGUNGSSATZ UWS ""EXTRA FLACH"" FOLIE"
6	4403011407	LAMPENFASSUNG	14	* 4403012304	VERZIERUNGSRING ROSTFREI
7	4403012302	SET QUETSCHDICHTUNG M-16 KT 19,5X2	15	4403011908	"LAMPENGEHÄUSE UWS ""EXTRA FLACH""
8	4403014101	KIT STOPFEN QUETSCHDICHTUNG 12X2	16	4403010069	LAMPE 12 V. 100 W.

CODE **21627, 35667**

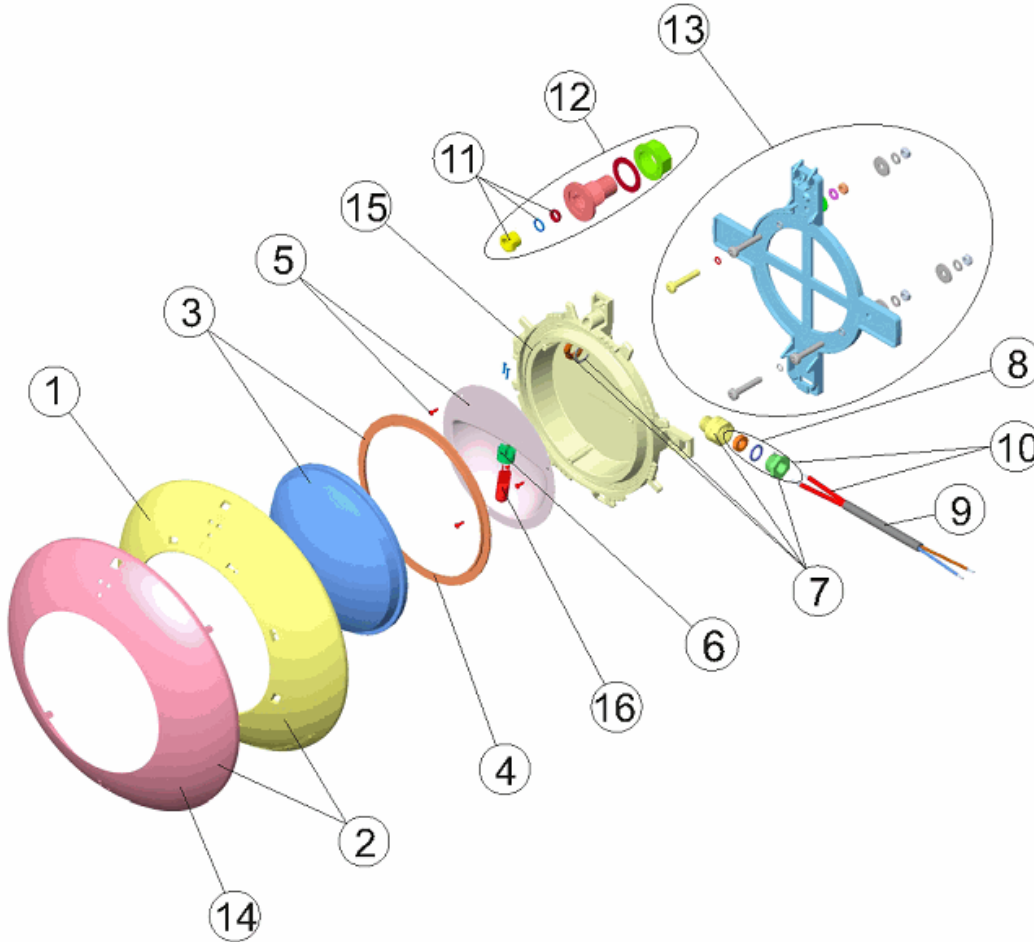
BESCHREIBUNG: **EXTRA FLACHER SCHEINWERFER VORGEFERTIGTES SCHWIMMBECKEN WEISSER RING/ROSTFREI**

HINWEISE

POSICIÓN	PIEZA	OBSERVACIÓN
1	4403011901	PARA 21627
2	4403012301	PARA 35667
14	4403012304	PARA 35667

CODE **21627, 35667**

DESCRIPTION: **EXTRA-FLAT LIGHT PREFABRICATED POOL WHITE RING / STAINLESS STEEL**



ENGLISH

POS	CODE	DESCRIPTION	POS	CODE	DESCRIPTION
1	* 4403011901	FLAT LIGHT FACEPLATE	9	4403011905	LIGHT CABLE
2	* 4403012301	SET RUSTPROOF DECORATIVE RING	10	4403015405	PROJECTOR CABLE, PACKING GLANDS PROJECTOR
3	4403012303	CLEAR LENS + GASKET	11	4403012704	PACKING GLAND PG-9
4	4403010102	LIGHT SILICON GASKET	12	4403012306	CONDUIT CONNECTOR
5	4403011903	LAMPHOLDER REFLECTOR PLATE	13	4403012305	LIGHT SUPPORT
6	4403011407	LAMP HOLDER	14	* 4403012304	RUSTPROOF DECORATIVE RING
7	4403012302	GLAND SEAL M-16 KT 19,5X2	15	4403011908	LIGHT BODY
8	4403014101	KIT PLUG PACKING GLAND 12X2	16	4403010069	LIGHTBULB 12 V. 100 W.

CODE **21627, 35667**

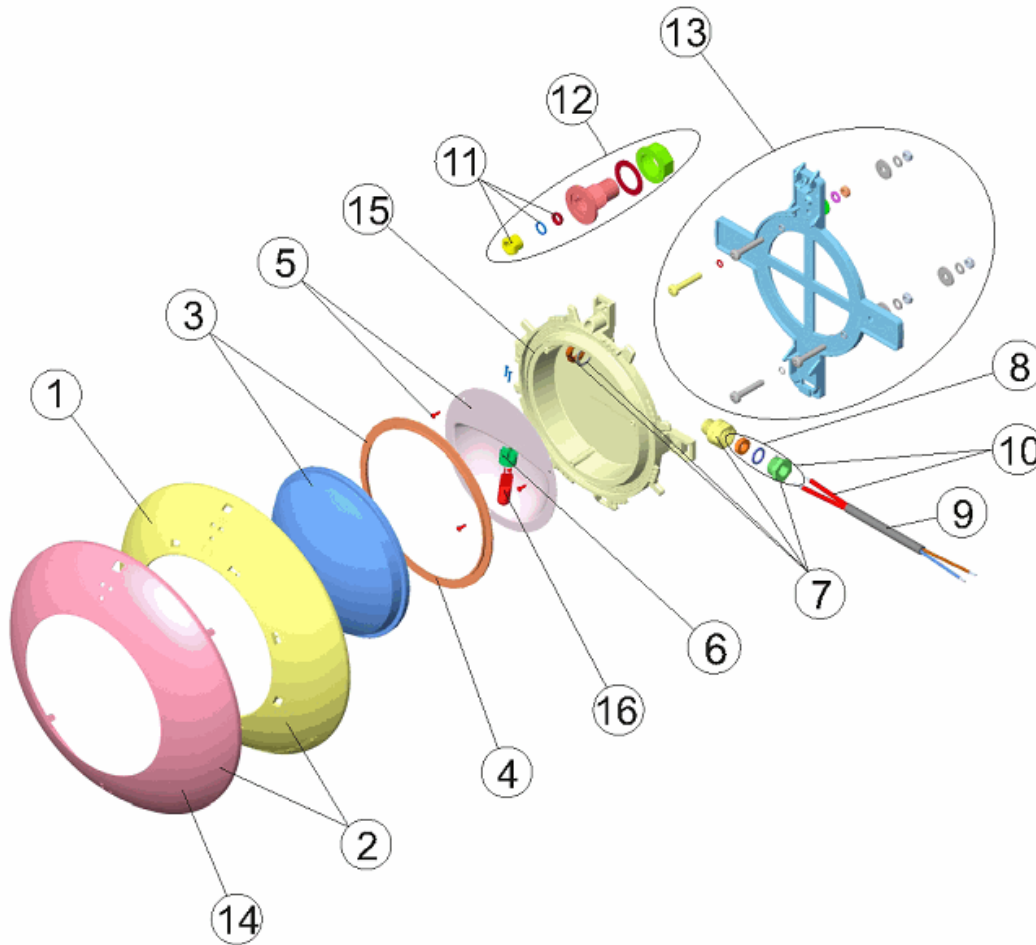
DESCRIPTION: **EXTRA-FLAT LIGHT PREFABRICATED POOL WHITE RING /
 STAINLESS STEEL**

OBSERVATIONS

POSICIÓN	PIEZA	OBSERVACIÓN
1	4403011901	PARA 21627
2	4403012301	PARA 35667
14	4403012304	PARA 35667

CODIGO **21627, 35667**

DESCRIPCION: **PROYECTOR EXTRA PLANO PISC. PREFABRICADA ARO BLANCO/INOX**



ESPAÑOL

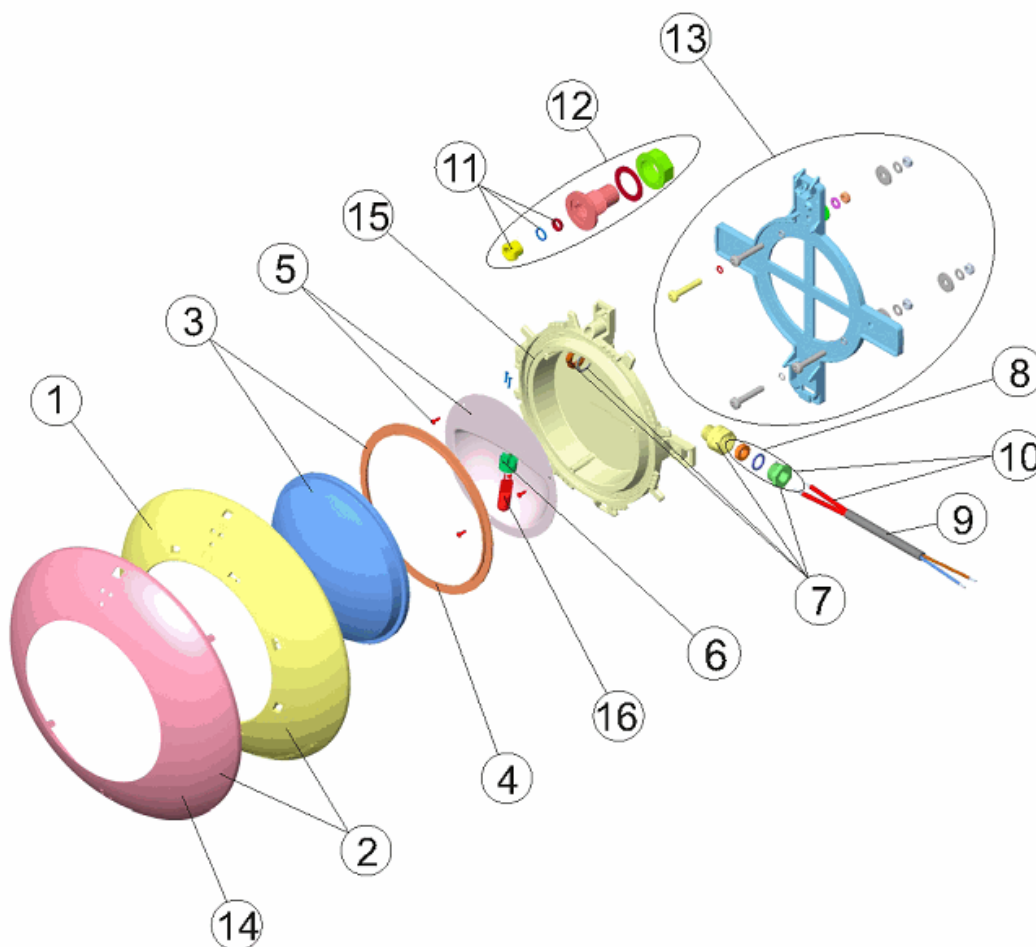
POS	CODIGO	DESCRIPCION	POS	CODIGO	DESCRIPCION
1	* 4403011901	EMBELLECEDOR PROYECTOR PLANO	9	4403011905	CABLE PROYECTOR
2	* 4403012301	CJTO.EMBELLECED.INOX PROJEC.EXTRA PLANO	10	4403015405	CABLE PROYECTOR, PRENSAESTOPAS
3	4403012303	LENTE TRANSPARENTE + JUNTA	11	4403012704	PRENSAESTOPAS PG-9
4	4403010102	JUNTA SILICONA PROYECTOR	12	4403012306	PASACABLES
5	4403011903	REFLECTOR PORTALAMPARAS	13	4403012305	SOPORTE PROYECTOR
6	4403011407	PORTALAMPARAS	14	* 4403012304	EMBELLECEDOR INOX PROYECTOR EXTRA PLANO
7	4403012302	CJTO. PRENSAESTOPAS M-16 KT 19,5X2	15	4403011908	CUERPO PROYECTOR
8	4403014101	CJTO. TAPON PRENSAESTOPAS TR 12X2	16	4403010069	LAMPARA HALOGENA 12 V. 100 W.

CODIGO **21627, 35667**DESCRIPCION: **PROYECTOR EXTRA PLANO PISC. PREFABRICADA ARO
BLANCO/INOX****OBSERVACIONES**

POSICIÓN	PIEZA	OBSERVACIÓN
1	4403011901	PARA 21627
2	4403012301	PARA 35667
14	4403012304	PARA 35667

CODE **21627, 35667**

DESCRIPTION: **PROJECTEUR EXTRA-PLAT PISC. PRÉFABRIQUÉE ENJOLIVEUR BLANC/INOX**



FRANCAIS

POS	CODE	DESCRIPTION	POS	CODE	DESCRIPTION
1	* 4403011901	ENJOLIVEUR PROJECTEUR PLAT	9	4403011905	CABLE DE PROJECTEUR
2	* 4403012301	ENSEMBLE ANNEAU ENJOLIVER INOX	10	4403015405	CABLE PROJECTEUR PRESSE ÉTOUPE
3	4403012303	LENTE PROJECTEUR + JOINT	11	4403012704	PRESSE ÉTOUPE PG-9
4	4403010102	JOINT SILICONE PROJECTEUR	12	4403012306	PASSE CABLE
5	4403011903	REFLECTEUR PORTE LAMPE	13	4403012305	SUPPORT PROJECTEUR
6	4403011407	PORTE-LAMPE	14	* 4403012304	ANNEAU ENJOLIVER INOX
7	4403012302	ENSEMBLE PRESSE ÉTOUPE M-16 KT 19,5X2	15	4403011908	CORPS DU PROJECTEUR
8	4403014101	BOUCHON PRESSE ÉTOUPE 12X2	16	4403010069	LAMPE 12 V. 100 W.

CODE **21627, 35667**

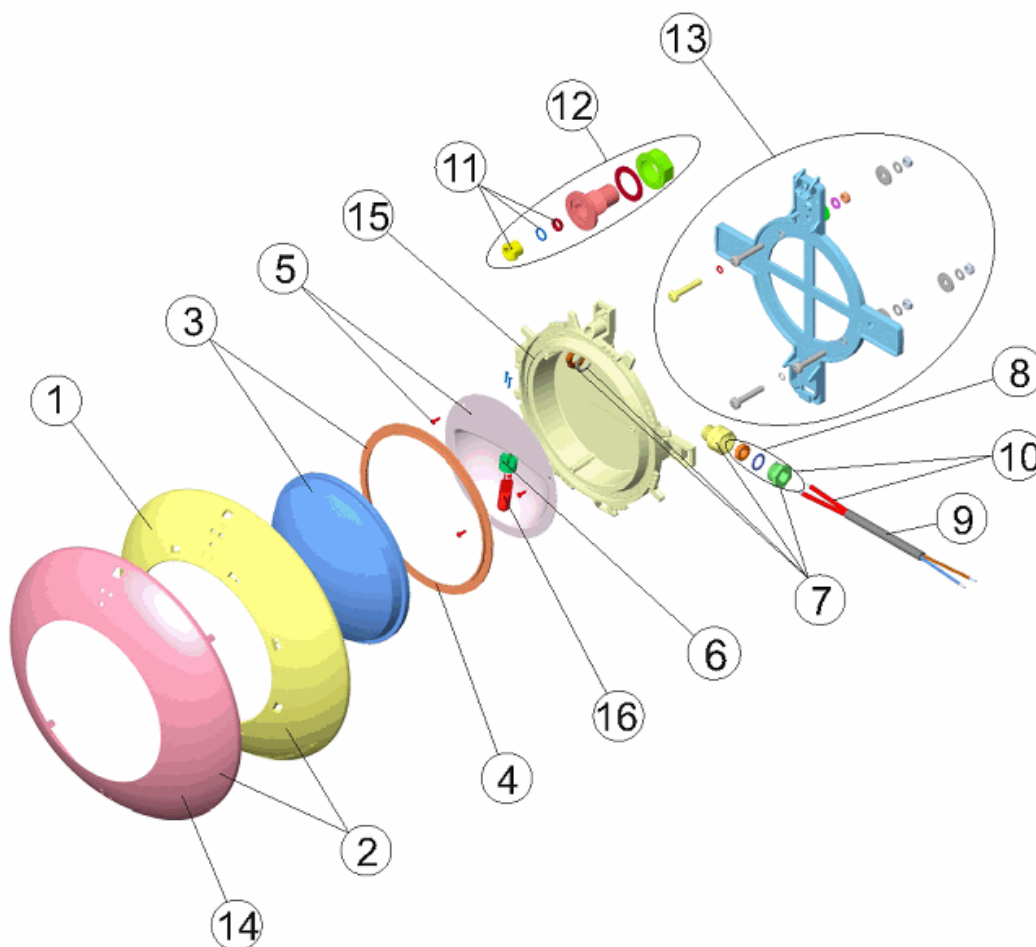
DESCRIPTION: **PROJECTEUR EXTRA-PLAT PISC. PRÉFABRIQUÉE ENJOLIVEUR
 BLANC/INOX**

OBSERVATIONS

POSICIÓN	PIEZA	OBSERVACIÓN
1	4403011901	PARA 21627
2	4403012301	PARA 35667
14	4403012304	PARA 35667

CODICE **21627, 35667**

DESCRIZIONE: **PROIETTORE EXTRA PIANO PISCINA PREFABBRICATA ANELLO BIANCO/INOX**



ITALIANO

POS	CODICE	DESCRIZIONE	POS	CODICE	DESCRIZIONE
1	* 4403011901	ANELLO FRONTALE FARO PIATTO	9	4403011905	CAVO FARO
2	* 4403012301	KIT ANELLO ORNAMENTALE INOSSID.	10	4403015405	CAVO FARO, PRESSACAVO
3	4403012303	LENTE PROIETTORE + GUERNIZIONE	11	4403012704	PRESSACAVO PG-9
4	4403010102	GUARNIZIONE SILICONE FARO	12	4403012306	PRESSACAVO
5	4403011903	RIFLETTORE PORTALAMPADE	13	4403012305	SUPPORTO FARO
6	4403011407	PORTALAMPADE	14	* 4403012304	ANELLO ORNAMENTALE INOSSID.
7	4403012302	KIT PRESSACAVO M-16 KT 19,5X2	15	4403011908	CORPO FARO
8	4403014101	KIT TAPPO	16	4403010069	LAMPADINA 12 V. 100 W.

CODICE **21627, 35667**

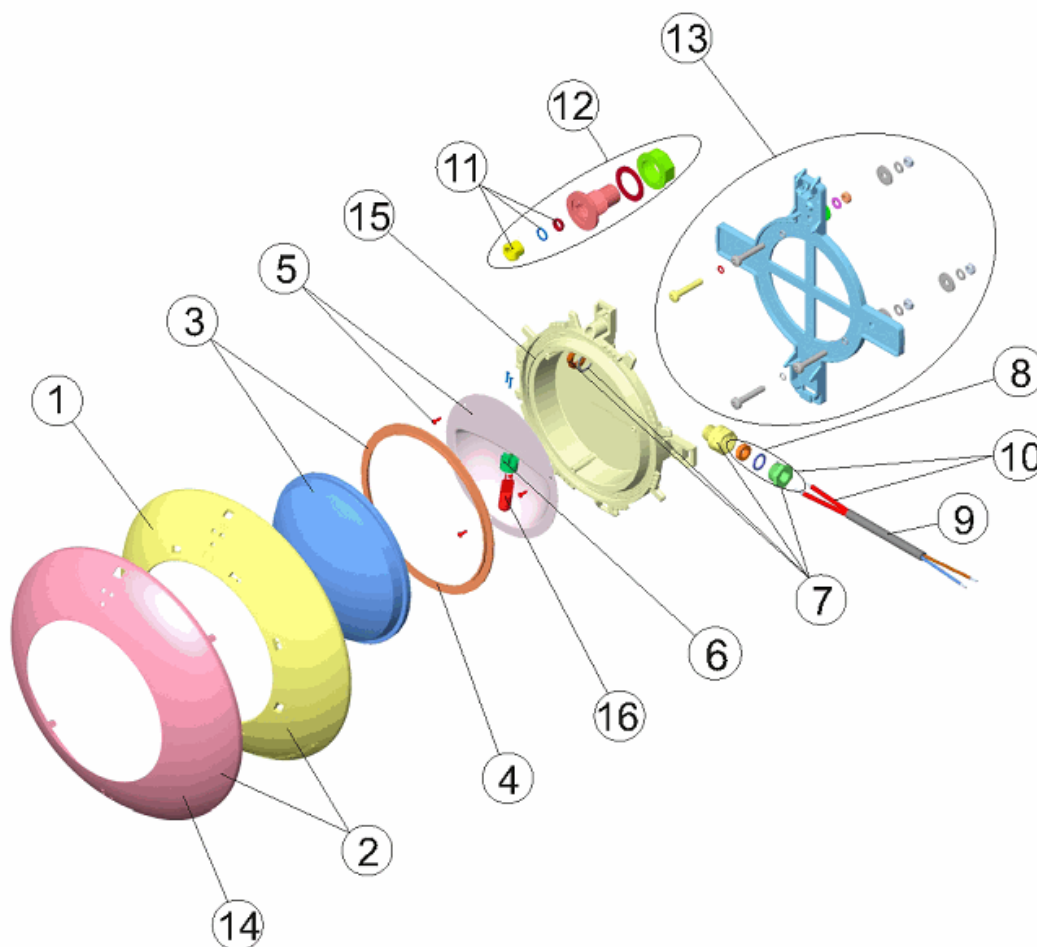
DESCRIZIONE: **PROIETTORE EXTRA PIANO PISCINA PREFABBRICATA ANELLO
 BIANCO/INOX**

OSSERVAZIONI

POSICIÓN	PIEZA	OBSERVACIÓN
1	4403011901	PARA 21627
2	4403012301	PARA 35667
14	4403012304	PARA 35667

CODIGO **21627, 35667**

DESCRIÇÃO: **PROJECTOR EXTRA PLANO PISC. PRÉ-FABRICADA ARO BRANCO/INOX**



PORTUGUES

POS	CODIGO	DESCRIÇÃO	POS	CODIGO	DESCRIÇÃO
1	* 4403011901	EMBELEZADOR PROJECTOR PLANO	9	4403011905	CABO PROJECTOR
2	* 4403012301	CJTO. ANEL DECORATIVO INOXIDABLE	10	4403015405	CABO P' PROJECTOR BUCIM PROJECTOR
3	4403012303	LENTE TRANSPARENTE + JUNTA	11	4403012704	BUCIN PG-9
4	4403010102	JUNTA SILICONE PROTECTOR	12	4403012306	PASSA-CABOS
5	4403011903	REFLECTOR PORTA-LÂMPADAS	13	4403012305	SUPORTE PROJECTOR
6	4403011407	PORTA-LÂMPADA	14	* 4403012304	ANEL DECORATIVO INOXIDABLE
7	4403012302	CONJUNTO BUCIM M-16 KT 19.5X2	15	4403011908	CORPO PROJECTOR
8	4403014101	CJTO. TAMPÃO VEDANTE 12X2	16	4403010069	BOMBILHA 12 V. 100 W.

