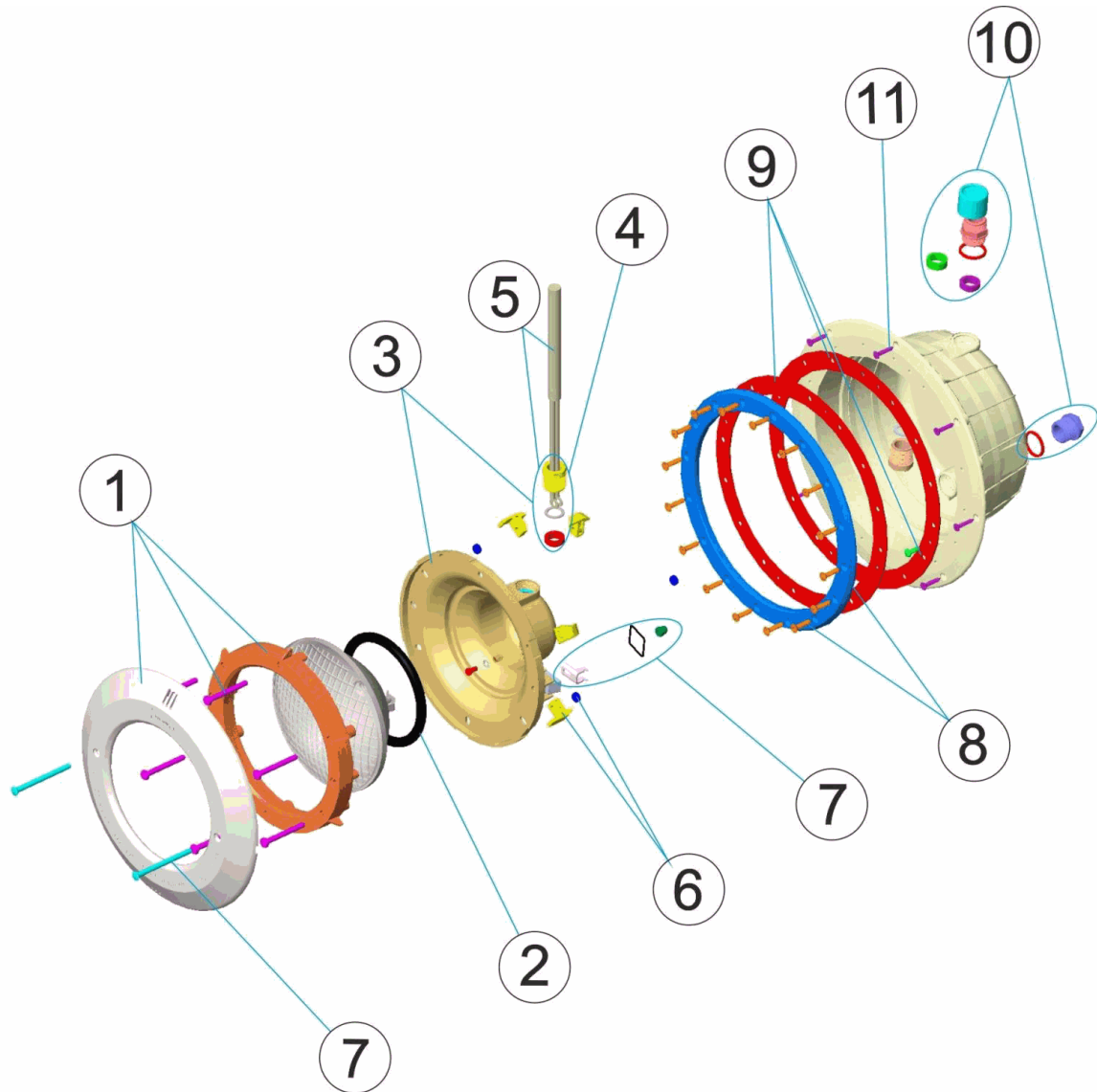


CODIGO **23672**

DESCRIPCION: **PROYECTOR STD / PP / S. LAMPARA**

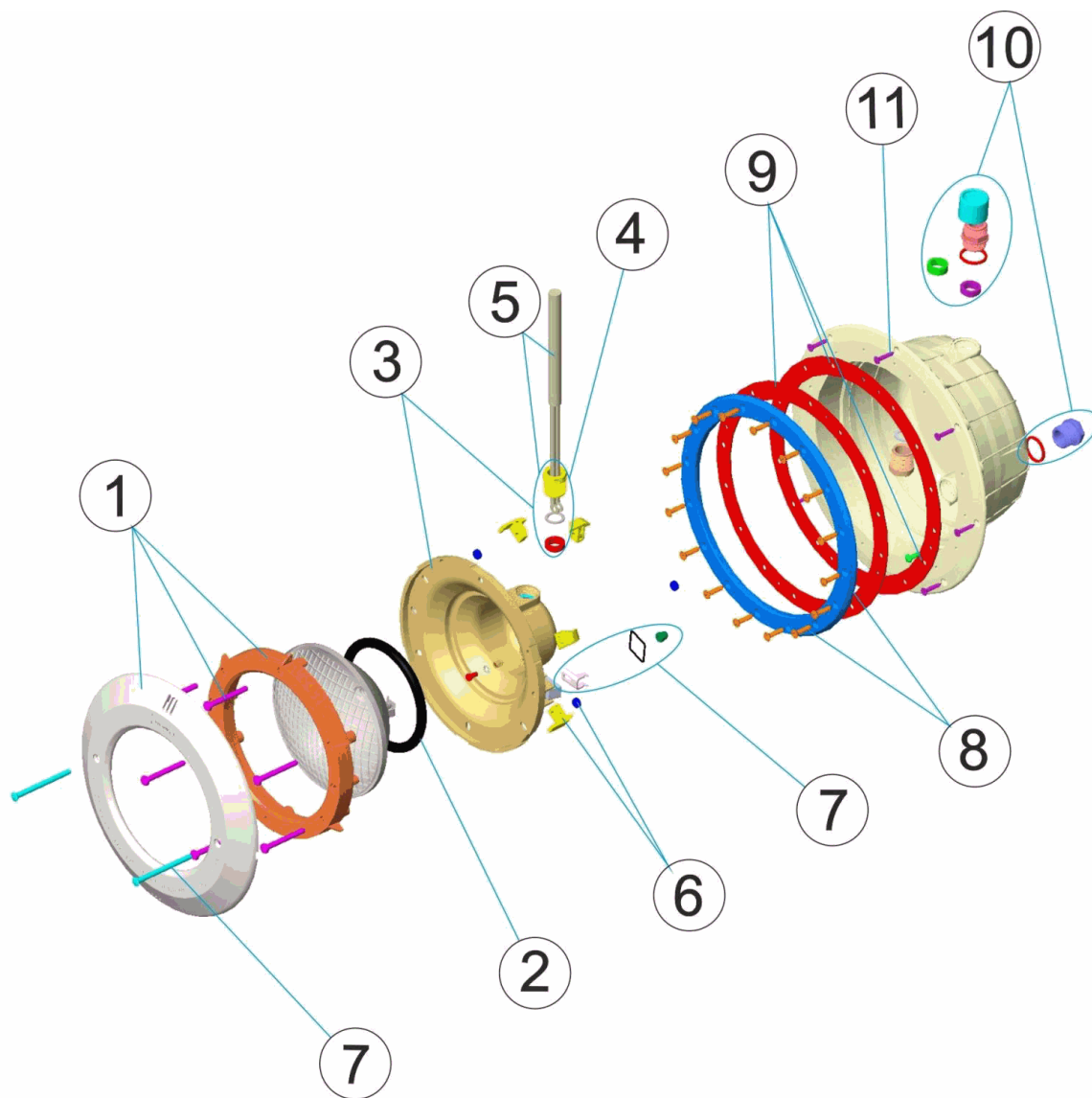


ESPAÑOL

POS	CODIGO	DESCRIPCION	POS	CODIGO	DESCRIPCION
1	4403010302	ARO BLANCO PROYECTOR	7	4403015002	CJTO. FIJACION PROYECTOR JELLY STD. A2
2	4403010304	JUNTA TORICA PROYECTOR	8	4403013506	BRIDA FIJACION PROYECTOR (PARKER)
3	4403010305	FONDO FOCO PROYECTOR HALOGENO	9	4403013501	JUNTA ADHESIVA PROYECTOR ANCHA STD
4	4403010110	PRENSAESTOPAS M25 HALOGENO	10	4403010313	PRENSAESTOPAS CUERPO PROYECTOR M-25
5	4403010314	CABLE PROYECTOR M-25 HALOGENO	11	4403010022	TORNILLO FIJACION NICHOS
6	4403010306	CLIP FIJACION PROYECTOR			

CODE **23672**

DESCRIPTION: **PROJECTEUR**

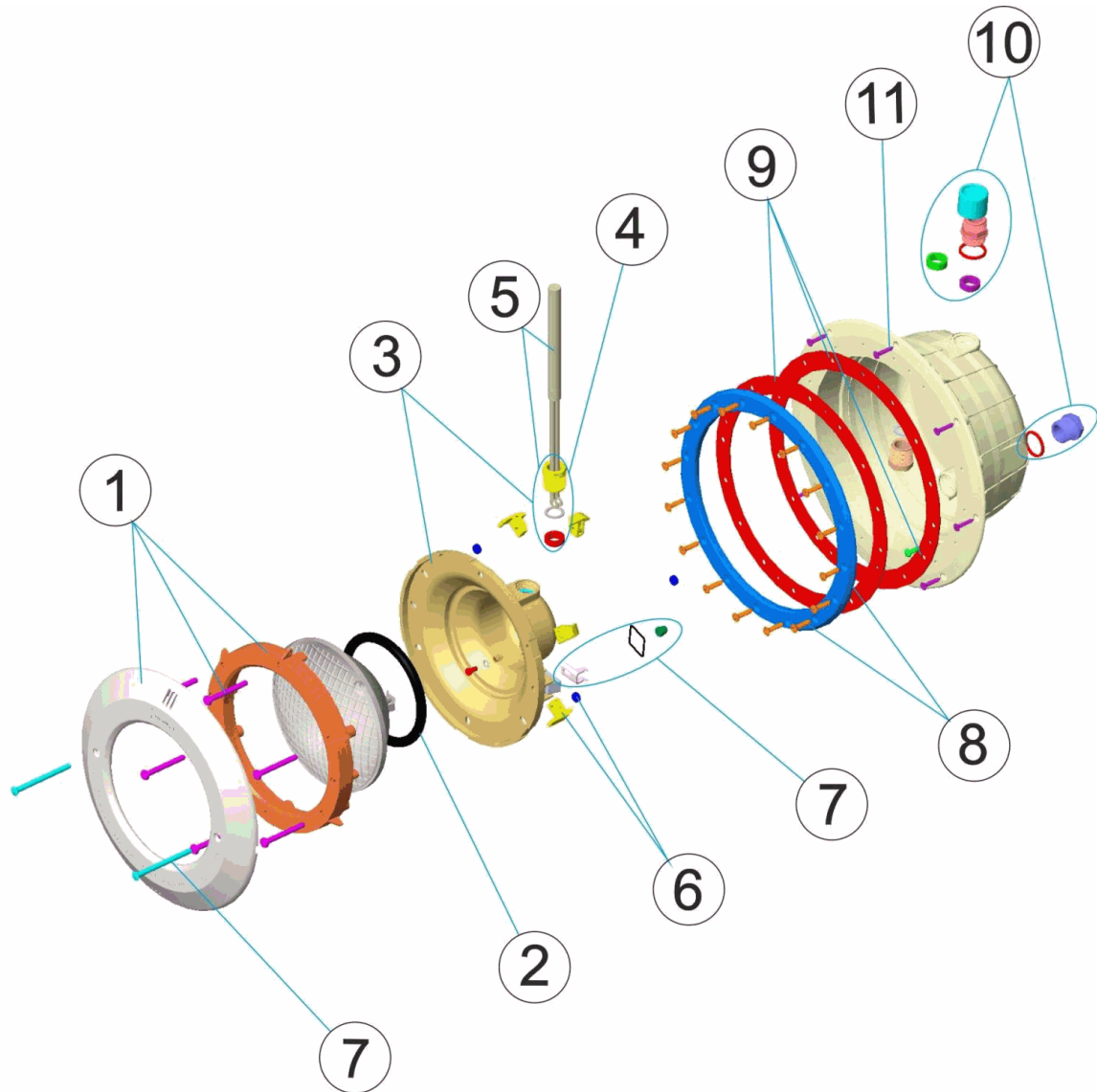


FRANCAIS

POS	CODE	DESCRIPTION	POS	CODE	DESCRIPTION
1	4403010302	ENJOLIVEUR BLANC DE PROJECTEUR	7	4403015002	ENSEMBLE FIXATION PROJECTEUR JELLY STD. A
2	4403010304	JOINT TORIQUE PROJECTEUR	8	4403013506	BRIDE FIXATION PROJECTEUR (PARKER)
3	4403010305	NICHE D'AMPOULE DE PROJECTEUR	9	4403013501	JOINT ADHESIF PROJECTEUR
4	4403010110	PRESSE-ETOUPE M 25	10	4403010313	CORPS PRESSE ETOUPE M-25
5	4403010314	CABLE PROJECTEUR M-25	11	4403010022	VIS FIXATION PROJECTEUR
6	4403010306	CLIP FIXATION PROJECTEUR			

CODE **23672**

DESCRIPTION: **LIGHT**

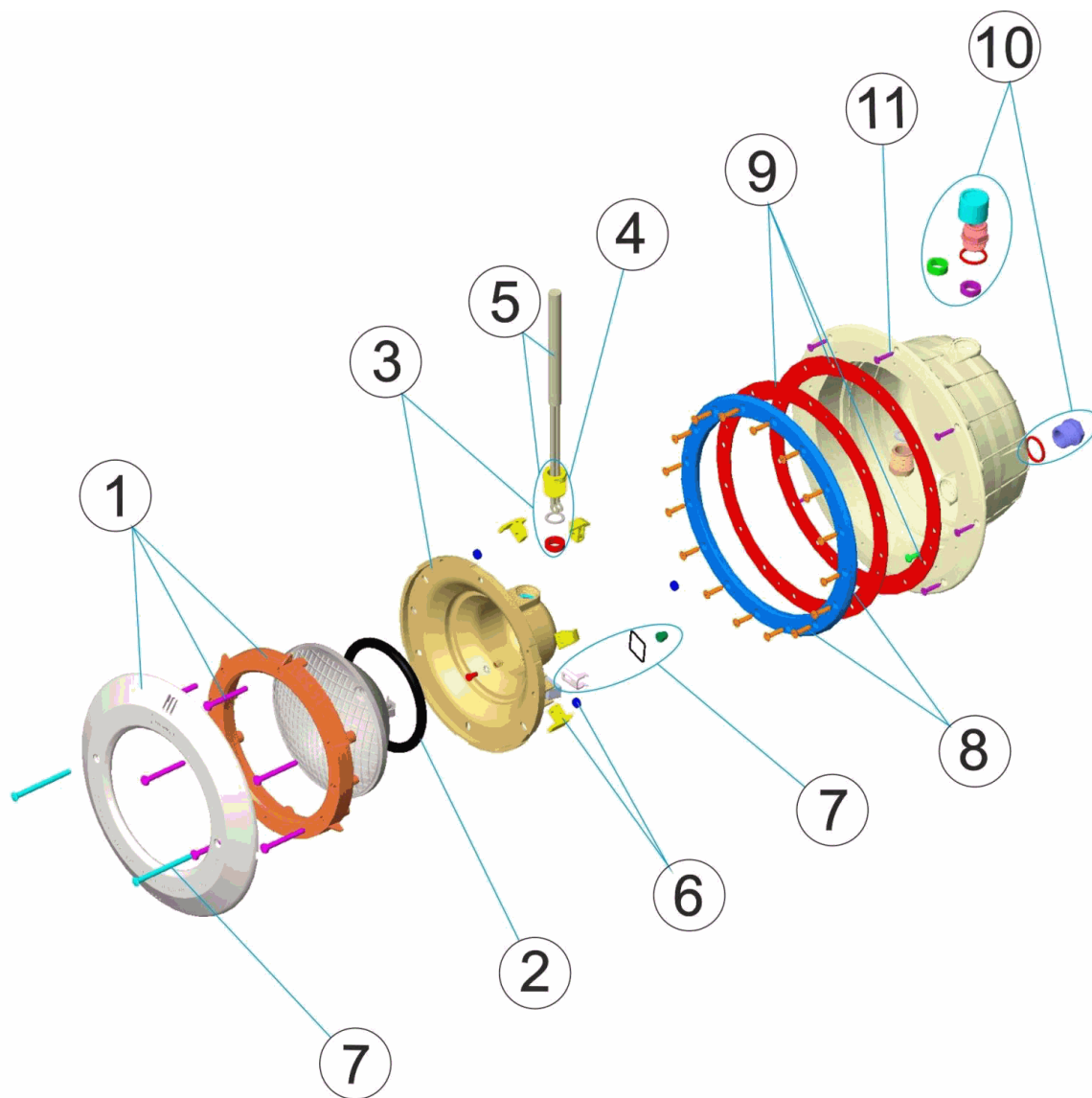


ENGLISH

POS	CODE	DESCRIPTION	POS	CODE	DESCRIPTION
1	4403010302	WHITE FACEPLATE	7	4403015002	FIXING SET UNDERWATER LIGHT JELLY STD. A2
2	4403010304	LIGHT O RING	8	4403013506	LIGHT FIXING FLANGE (PARKER)
3	4403010305	BACK COVER	9	4403013501	LIGHT ADHESIVE GASKET
4	4403010110	PACKING GLAND M 25	10	4403010313	BODY PACKING GLAND M-25
5	4403010314	LIGHT CABLE M-25	11	4403010022	LIGHT FIXING SCREW
6	4403010306	LIGHT FIXING CLIP			

CODICE **23672**

DESCRIZIONE: **PROIETTORE**

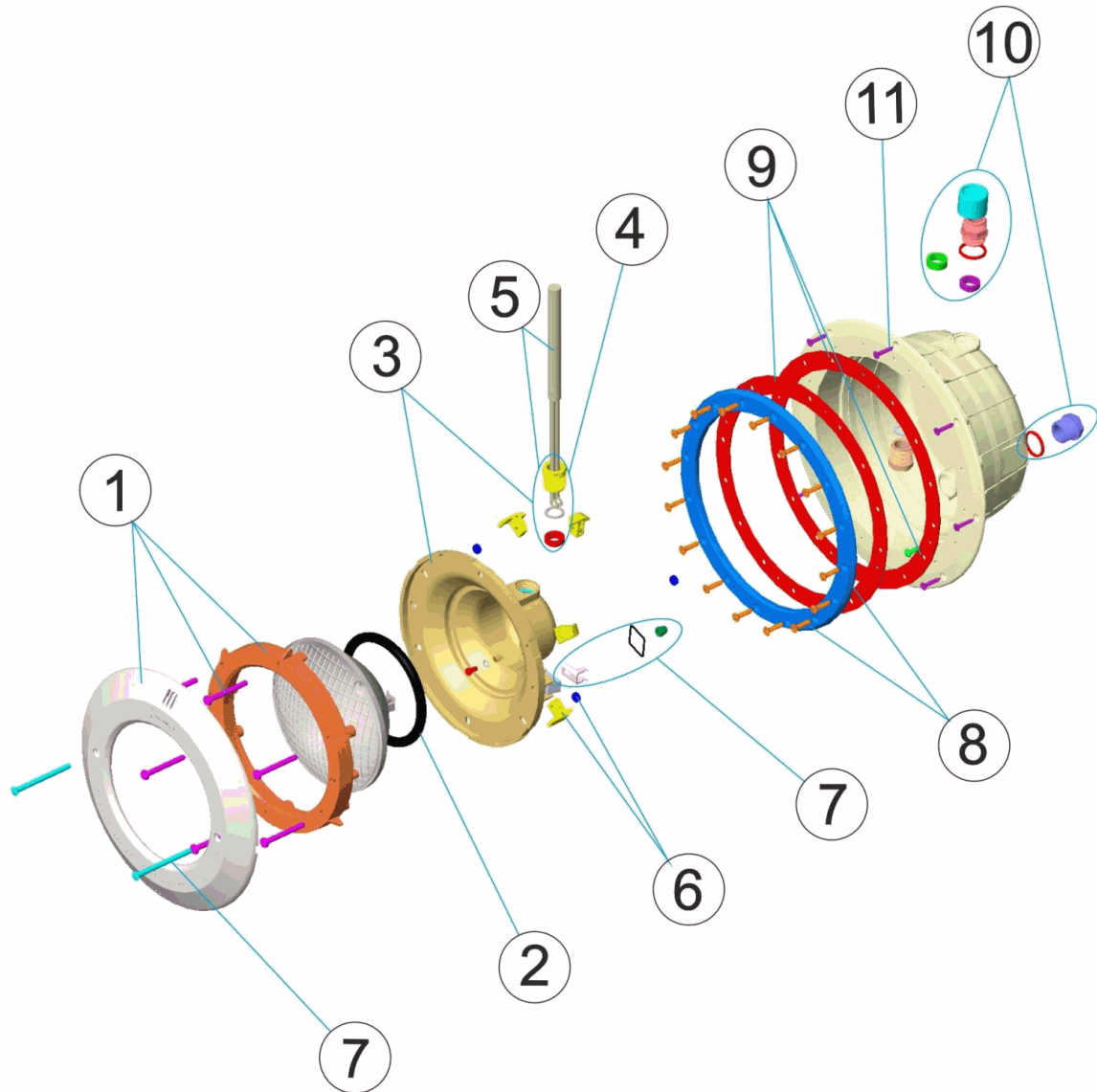


ITALIANO

POS	CODICE	DESCRIZIONE	POS	CODICE	DESCRIZIONE
1	4403010302	FLANGIA BIANCA FARO	7	4403015002	KIT FISSAGGIO PROIETTORE JELLY STD. A2
2	4403010304	O-RING FARO	8	4403013506	FLANGIA FISSAGGIO FARO (PARKER)
3	4403010305	COPPA FARO	9	4403013501	GUARNIZIONE ADESIVA FARO
4	4403010110	PRESSACAVI M 25	10	4403010313	PRESSACAVI CORPO M-25
5	4403010314	CABLE PROJECTEUR M-25	11	4403010022	VITE FISSAGGIO FARO
6	4403010306	CLIP FISSAGGIO FARO			

CODE **23672**

BESCHREIBUNG: **UWS STD / PP / S. LAMPE**

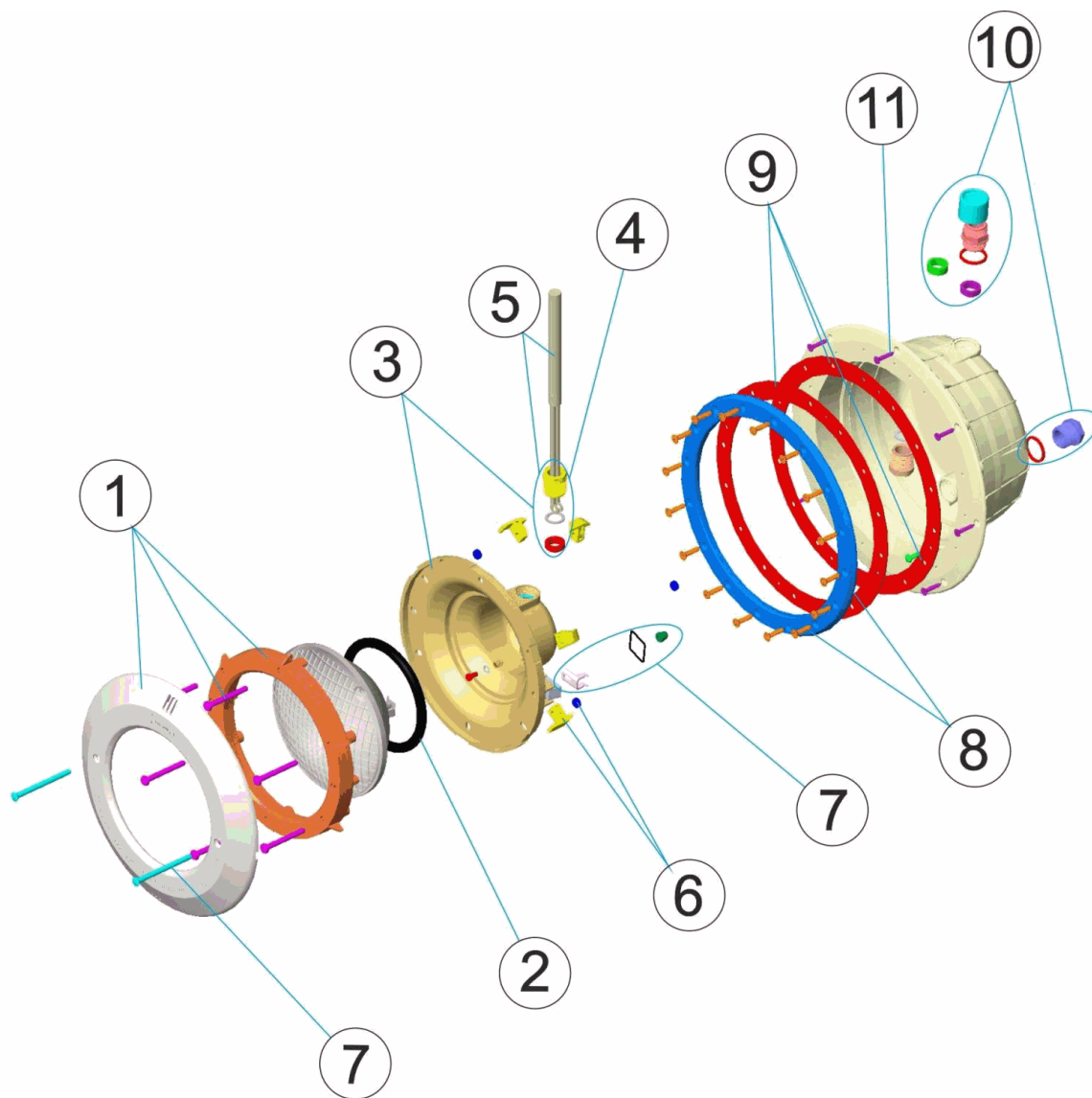


DEUTSCH

POS	CODE	BESCHREIBUNG	POS	CODE	BESCHREIBUNG
1	4403010302	RING WEISS UWS	7	4403015002	FIXIERSET UWS JELLY STD. A2
2	4403010304	O-RING UWS	8	4403013506	BEFESTIGUNGSFLANSCH UWS (PARKER)
3	4403010305	BASIS UWS HALOGEN	9	4403013501	DICHTUNG SELBSTKLEBEND UWS BREIT STD
4	4403010110	QUETSCHVERSCHRAUBUNG M25 HALOGEN	10	4403010313	QUETSCHVERSCHRAUBUNG GEHÄUSE UWS M-25
5	4403010314	UWS-KABEL M-25 HALOGEN	11	4403010022	FIXIERSCHRAUBE EINBAUTOPF
6	4403010306	FIXIERCLIP UWS			

CODIGO **23672**

DESCRIÇÃO: **PROJECTOR**



PORTUGUES

POS	CODIGO	DESCRIÇÃO	POS	CODIGO	DESCRIÇÃO
1	4403010302	ARO BRANCO PROJECTOR	7	4403015002	CONJUNTO FIXAÇÃO PROJECTOR JELLY STD. A2
2	4403010304	JUNTA TÓRICA PROJECTOR	8	4403013506	FLANGE FIXAÇÃO PROJECTOR (PARKER)
3	4403010305	FUNDO FOCO PROJECTOR	9	4403013501	JUNTA ADESIVA PROJECTOR
4	4403010110	BUCIN M-25	10	4403010313	BUCIN CORPO M-25
5	4403010314	CABO PROJECTOR M-25	11	4403010022	PARAFUSO DE FIXAÇÃO PROJECTOR
6	4403010306	CLIP FIXAÇÃO PROJECTOR			