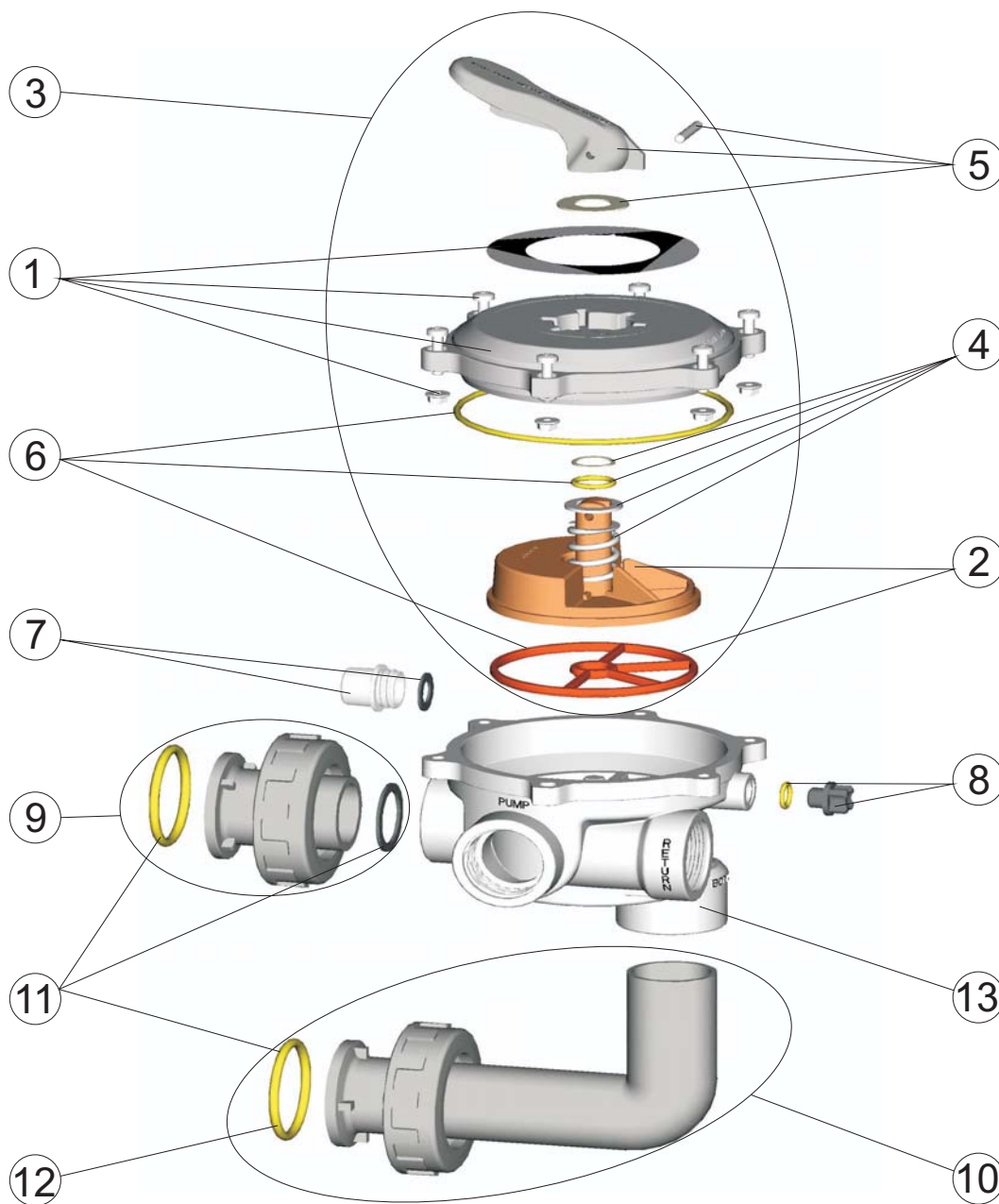


CODIGO : 34543

DESCRIPCION : VALVULA SELECTORA 1½" ENLACE FILTRO-FLAT



POS.	CODIGO	DENOMINACION	POS.	CODIGO	DENOMINACION
1	4404122401	CJTO. TAPA 1 1/2" - FLAT	8	4404121107	TAPON 1/4" VALVULA
2	4404122402	DISTRIBUIDOR CON JUNTA 1 1/2" - FLAT	9	4404120202	ENLACE RECTO NEGRO 1 1/2" NUEVO
3	4404122403	CJTO. SUPERIOR 1 1/2" - FLAT	10	4404120204	ENLACE ACODADO NEGRO 1 1/2" NUEVO
4	4404122404	RESORTE VALVULA 1 1/2" - FLAT	11	4404120205	JUNTAS ENLACE 1 1/2"
5	4404122101	MANETA 1 1/2"	12	4404301901	JUNTAS ENLACE 1 1/2"
6	4404122104	JUNTAS VALVULA 1 1/2"	13	34543R0100	CJTO CUERPO 1 1/2" FLAT LATERAL
7	4404120108	VISOR CON JUNTA			

ENGLISH

POS.	CODE	DESCRIPTION	POS.	CODE	DESCRIPTION
1	4404122401	LID SET 1 1/2" FLAT	8	4404121107	PLUG 1/4"
2	4404122402	DISTRIBUTOR WITH GASKETS 1 1/2" FLAT	9	4404120202	UNION BLACK 1 1/2" NEW
3	4404122403	SUPERIOR SET 1 1/2" FLAT	10	4404120204	ELBOW BLACK 1 1/2" NEW
4	4404122404	SPRING 1 1/2" FLAT	11	4404120205	UNION SEALS 1 1/2"
5	4404122101	HANDLE 11/2" ECO	12	4404301901	O RING D.56,3X5.3 EPDM65
6	4404122104	GASKETS 1 1/2" ECO	13	34543R0100	LOWER PART SELECTOR VALVE 1 1/2" FLAT
7	4404120108	VISOR WITH SEAL			

FRANÇAIS

POS.	CODE	DESCRIPTION	POS.	CODE	DESCRIPTION
1	4404122401	ANSEMBLE TAPPO 1 1/2" FLAT	8	4404121107	BOUCHON 1/4" DE VANNE
2	4404122402	DISTRIBUTEUR AVEC JOINT 1 1/2" FLAT	9	4404120202	SORTIE DROITE NOIRE 1 1/2" NOUVEAU MODELE
3	4404122403	ENSEMBLE SUPÉRIEUR 1 1/2" FLAT	10	4404120204	SORTIE COUDEE NOIRE 1 1/2"
4	4404122404	RESSORT DE VANNE 1 1/2" FLAT	11	4404120205	JOINTS DE SORTIES 1 1/2"
5	4404122101	POIGNEE 1 1/2" ECO	12	4404301901	JOINT TORIQUE RACCORD SORTIE D.56,3X5.3 EPDM 65
6	4404122104	JOINTS DE VANNE 1 1/2" ECO	13	34543R0100	CORPS 1 1/2" VANNE FLAT
7	4404120108	VOYANT ET JOINT			

ITALIANO

POS.	CODE	DESCRIPTION	POS.	CODE	DESCRIPTION
1	4404122401	KIT COPERCHIO 1 1/2" FLAT	8	4404121107	COPERCHIO 1/4" VALVOLA
2	4404122402	CAMPANA CON GUARNICIONE SELETRICE 1 1/2" FLAT	9	4404120202	RACCORDO DIRITTO NERO 1 1/2 NUOVO
3	4404122403	IL SUPERIORE HA REGOLATO 1 1/2" FLAT	10	4404120204	RACCORDO A GOMITO NERO 1 1/2 NUOVO
4	4404122404	MOLLA VALVOLA 1 1/2" FLAT	11	4404120205	GUARNIZIONE PER RACCORDO 1 1/2"
5	4404122101	MANIGLIA 1 1/2" ECO	12	4404301901	O-RING RACCORDO USCITA D.56,3X5.3 EPDM 65
6	4404122104	GUARNIZIONI VALVOLA 1 1/2" ECO	13	34543R0100	CORPO VALVOLA 1 1/2" FLAT
7	4404120108	VISORE CON GUARNIZIONE			

DEUTSCH

POS.	CODE	DESCRIPTION	POS.	CODE	DESCRIPTION
1	4404122401	DECKELSET 1 1/2" FLAT	8	4404121107	ENTLEERUNGSSTOPFENSATZ 1/4" RSV 6+1
2	4404122402	DREHTELLERSATZ RSV 1 1/2" FLAT	9	4404120202	ROHWASSERANSCHLUSSSATZ RSV 1 1/2" SCHWARZ NEU
3	4404122403	OBERES SET 1 1/2" FLAT	10	4404120204	REINWASSERARM RSV 1 1/2" SCHWARZ KOMPLETT NEU
4	4404122404	FEDER MIT SCHEIBEN 1 1/2" FLAT	11	4404120205	DICHTUNGSSATZ RSV-SATZ 1 1/2"
5	4404122101	HEBEL KOMPLETT 1 1/2" ECO	12	4404301901	O-RING D.56.3X5.3 EPDM 65
6	4404122104	DICHTUNGSSATZ RSV 1 1/2" ECO	13	34543R0100	UNTERTEIL MEHRWEG-VENTIL 1 1/2" FLAT
7	4404120108	SICHTGLAS MIT DICHTUNG			

PORTUGUÊS

POS.	CODE	DESCRIPTION	POS.	CODE	DESCRIPTION
1	4404122401	CONJUNTO TAMPA 1 1/2" FLAT	8	4404121107	TAMPÃO 1/4" VÁLVULA
2	4404122402	DISTRIBUIDOR CON JUNTA 1 1/2" FLAT	9	4404120202	LIGAÇÃO RECTA PRETA 1 1/2" NOVA
3	4404122403	CONJUNTO SUPERIOR 1 1/2" FLAT	10	4404120204	LIGAÇÃO CURVA PRETA 1 1/2" NOVA
4	4404122404	TAMPA PARAFUSOS 1 1/2" FLAT	11	4404120205	JUNTAS LIGAÇÃO 1 1/2"
5	4404122101	MANIPULO 1 1/2" ECO	12	4404301901	JUNTA TÓRICA D.56.3X5.3 EPDM 65
6	4404122104	JUNTAS VÁLVULA 1 1/2" ECO	13	34543R0100	CORPO 1 1/2" FLAT
7	4404120108	VISOR COM JUNTA			