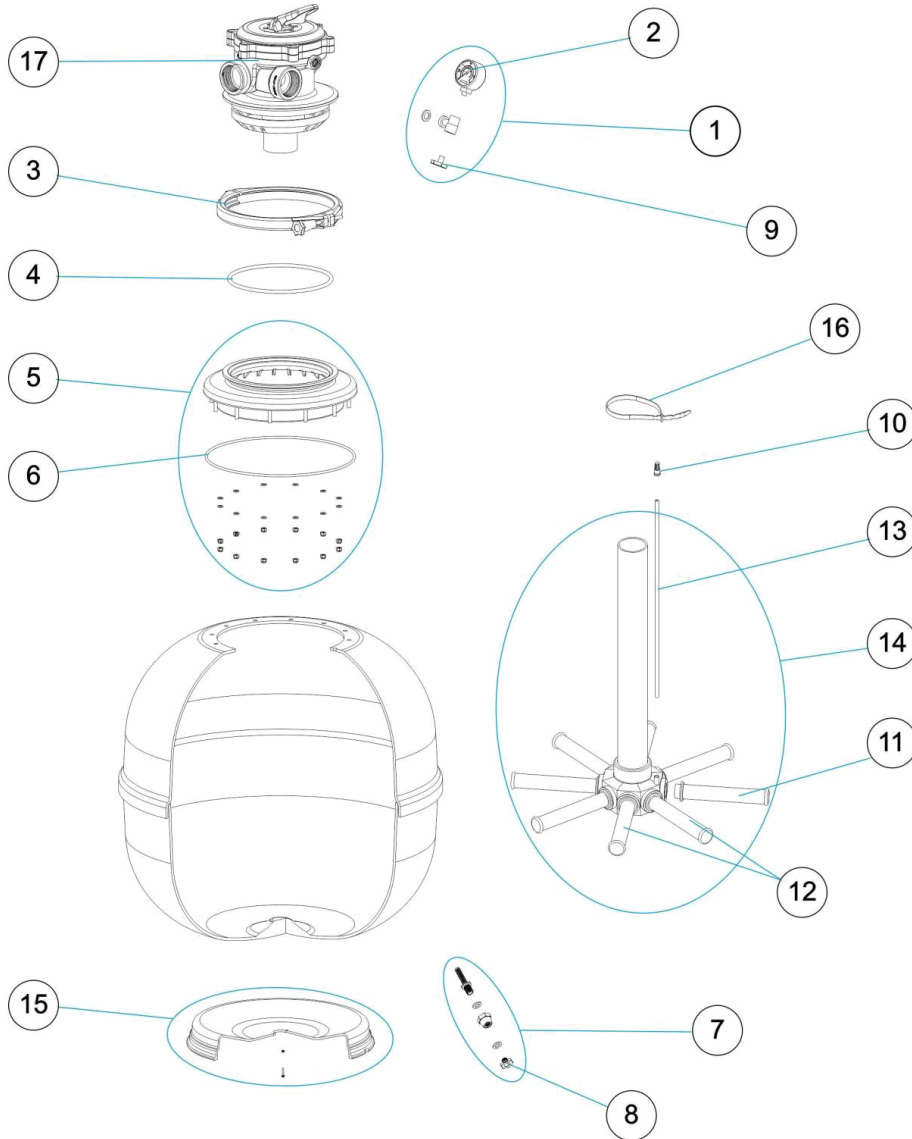


CODIGO **36606**

DESCRIPCION: **FILTRO ASTER 550 TOP PARA CASETA**



ESPAÑOL

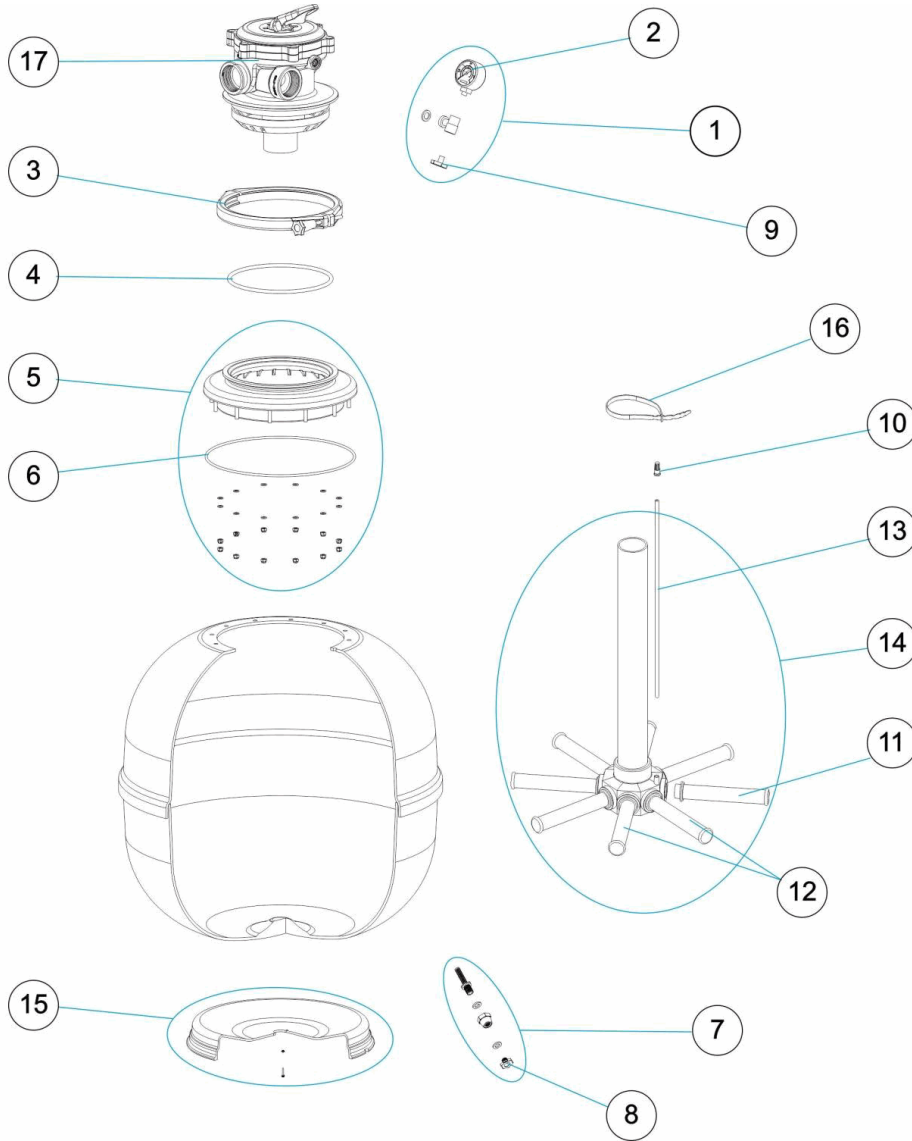
POS	CODIGO	DESCRIPCION	POS	CODIGO	DESCRIPCION
1	4404220101	MANOMETRO COMPLETO	10	4404040108	PURGA AIRE
2	4404220102	MANOMETRO 1/8" 3 KG/C "	11	* 4404300917	BRAZO COLECTOR 1" 110 M "
3	4404040000	CJTO. ZUNCHO	12	4404010025	CJTO. BRAZOS COLECTOR D. 400
4	4404080101	JUNTA TORICA TAPA	13	4404300607	TUBO PVC RIGIDO L-525
5	4405040405	CJTO. ARO CUELLO	14	4404270019	CJTO. COLECTOR D.450 TOP 1"
6	4404020116	JUNTA TORICA 255X4	15	4404010269	PIE FILTRO D. 550
7	4404010108	PURGA AGUA 3/8"	16	00471R0416	BRIDA " UNEX" REF.2244"
8	4404040113	TAPON PURGA Y JUNTA	17	40794	VALVULA 1 1/2" TOP FLA "
9	4404130107	TAPON PURGA 1/4" ANONIMO CON JUNT "			

CODIGO **36606**DESCRIPCION: **FILTRO ASTER 550 TOP PARA CASETA****OBSERVACIONES**

POS	CODIGO	OBSERVACIONES
11	4404300917	PARA: 36606 [4UT]

CODE **36606**

DESCRIPTION: **FILTRE ASTER 550 TOP**



FRANCAIS

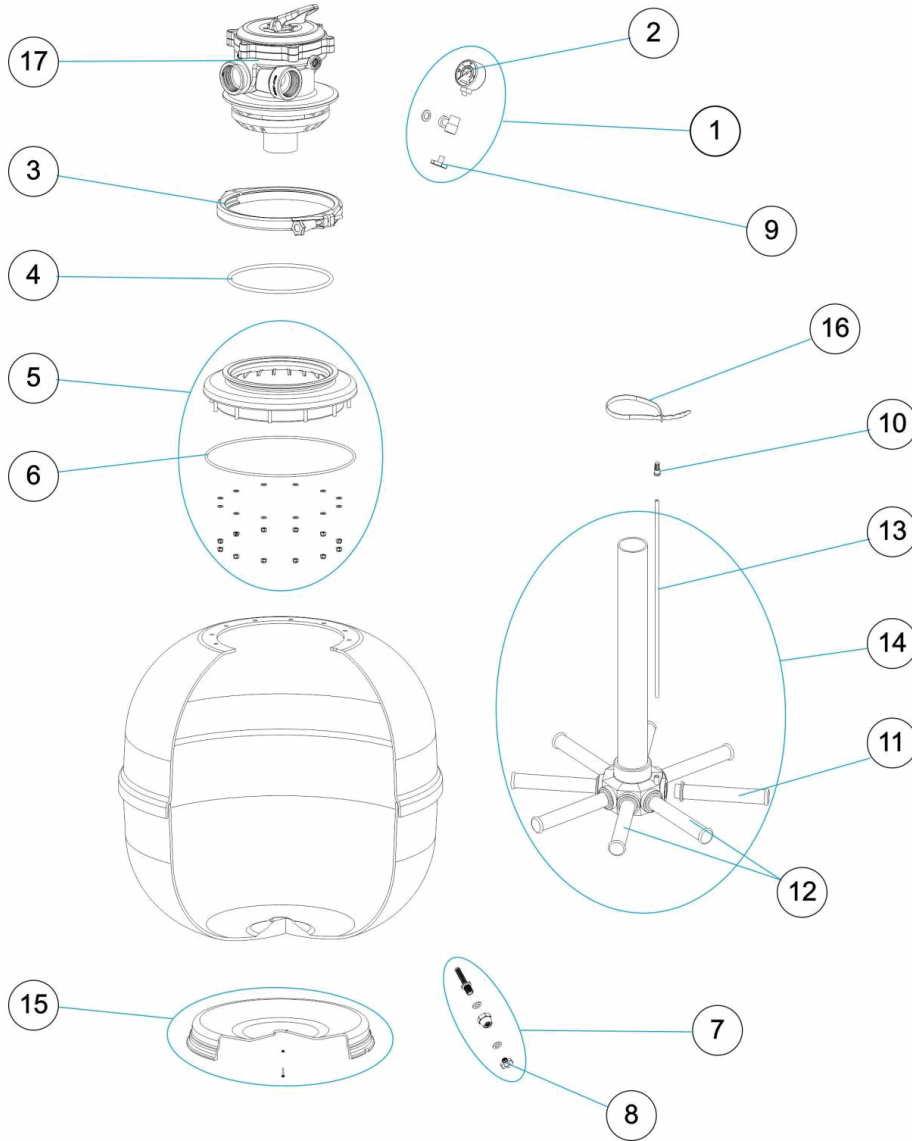
POS	CODE	DESCRIPTION	POS	CODE	DESCRIPTION
1	4404220101	MANOMETRE COMPLET	10	4404040108	PURGE D'AIR
2	4404220102	MANOMETRE 1/8" 3 KG./C "	11	* 4404300917	BRAS DE REPARTITEUR 1" 110 M "
3	4404040000	ENS. COLLIER	12	4404010025	ENSEMBLE BRAS DE REPARTITEUR D. 400
4	4404080101	JOINT TORIQUE COUVERCLE	13	4404300607	TUBE PVC RIGIDE L-525
5	4405040405	ENSEMBLE " BAGUE JOIN "	14	4404270019	ENSEMBLE COLLECTEUR D. 450 TOP 1"
6	4404020116	JOINT TORIQUE 255X4	15	4404010269	SOCLE FILTRE D. 550
7	4404010108	PURGE D'EAU 3/8"	16	00471R0416	BRIDE UNEX 2244
8	4404040113	BOUCHON PURGE ET JOINT	17	40794	VANNE MULTIVOIES AUTOMATIQUE 1 1/2" FLA "
9	4404130107	BOUCHON PURGE 1/4" ANONYME AVEC JOIN "			

CODE **36606**DESCRIPTION: **FILTRE ASTER 550 TOP****OBSERVATIONS**

POS	CODE	OBSERVATIONS
11	4404300917	POUR: 36606 [4UT]

CODE **36606**

DESCRIPTION: **ASTER FILTER TOP 550**



ENGLISH

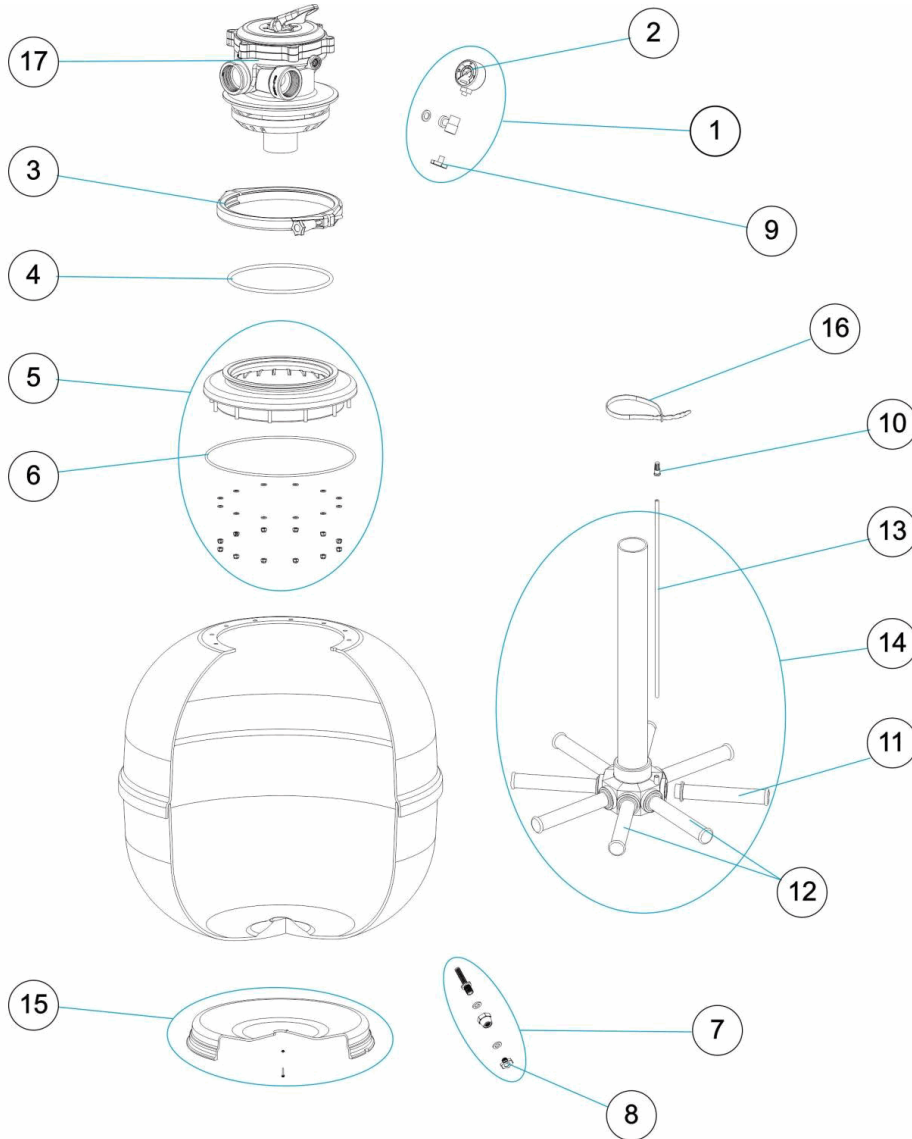
POS	CODE	DESCRIPTION	POS	CODE	DESCRIPTION
1	4404220101	COMPLETE PRESSURE GAUGE UNIT	10	4404040108	AIR PURGE
2	4404220102	PRESSURE GAUGE 1/8" 3 KG./C "	11	* 4404300917	MANIFOLD ARM 1" 110 M "
3	4404040000	SET BAND	12	4404010025	MANIFOLD ARM ASSEMBLY D. 400
4	4404080101	LID 'O' RING	13	4404300607	RIGID PVC PIPE L-525
5	4405040405	SET FILTER RING	14	4404270019	MANIFOLD ASSEMBLY D. 450 TOP 1"
6	4404020116	O' RING 255X4	15	4404010269	FILTER BASE D. 550
7	4404010108	WATER PURGE 3/8"	16	00471R0416	FLANGE UNEX 2244
8	4404040113	DRAIN PLUG AND GASKET	17	40794	1 1/2" FLAT BAYONETTE MULTIPOINT VALV "
9	4404130107	ANONYMOUS CAP			

CODE **36606**DESCRIPTION: **ASTER FILTER TOP 550****OBSERVATIONS**

POS	CODE	OBSERVATIONS
11	4404300917	FOR: 36606 [4UT]

CODICE 36606

DESCRIZIONE: FILTRO ASTER 550 TOP



ITALIANO

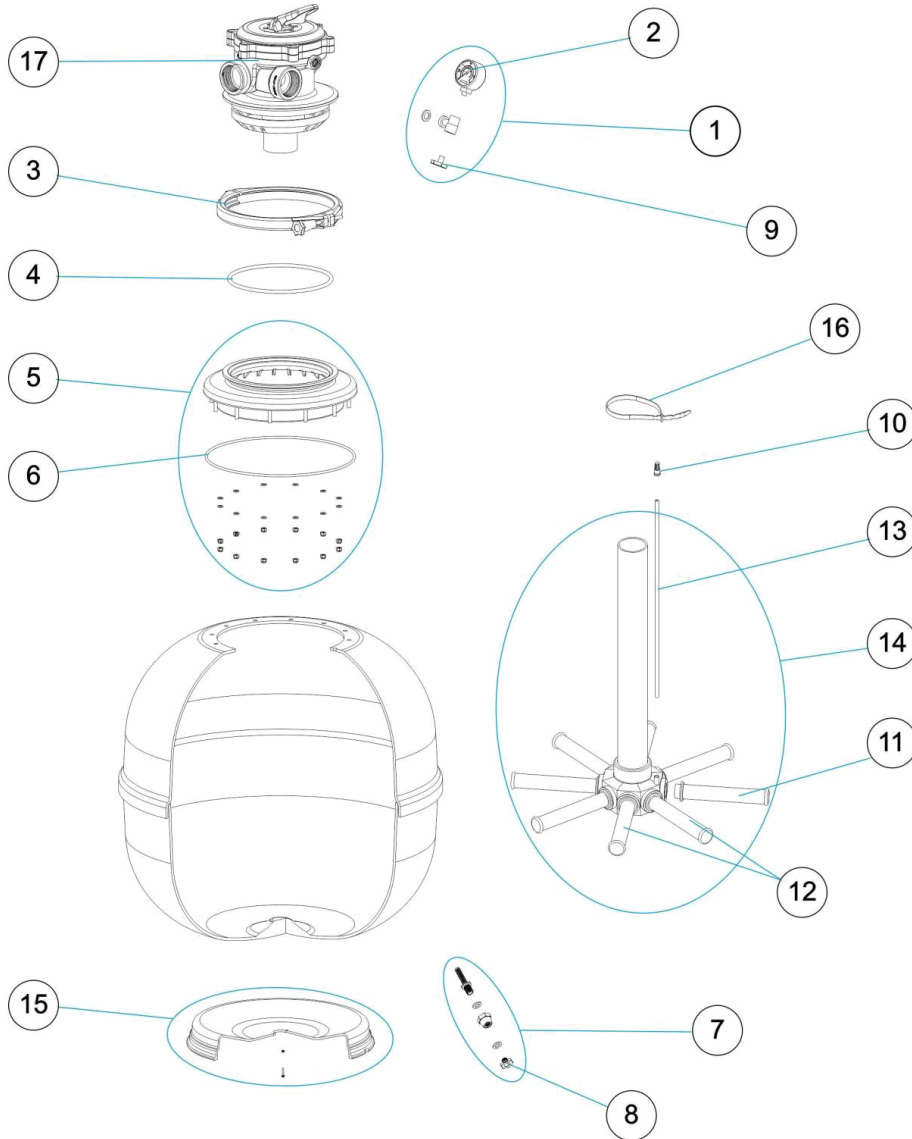
POS	CODICE	DESCRIZIONE	POS	CODICE	DESCRIZIONE
1	4404220101	MANOMETRO COMPLETO	10	4404040108	SFIATO ARIA
2	4404220102	MANOMETRO 1/8" 3 KG./C "	11	* 4404300917	CANDELOTTO COLLECTORE 1" 110 M "
3	4404040000	GRUPPO FASCETTA	12	4404010025	GRUPPO CANDELOTTO COLLECTORE D. 400
4	4404080101	O-RING COPERCHIO	13	4404300607	TUBO PVC RIGIDO L-525
5	4405040405	KIT FLANGIA COPERCHIO	14	4404270019	KIT COLLETTORE D. 450 TOP 1"
6	4404020116	O-RING 255X4	15	4404010269	BASE FILTRO D. 550
7	4404010108	SCARICO ACQUA 3/8"	16	00471R0416	FLANGIA UNEX 2244
8	4404040113	TAPPO SPURGO E GUARNIZIONE	17	40794	VALVOLA TOP 1 1/2" FLA "
9	4404130107	APPO 1/4" SCARICO ANONIMO CON GUARNIZION "			

CODICE **36606**DESCRIZIONE: **FILTRO ASTER 550 TOP****OSSERVAZIONI**

POS	CODICE	OSSERVAZIONI
11	4404300917	PER: 36606 [4UT]

CODE **36606**

BESCHREIBUNG: **FILTER ASTER 550 TOP FÜR GEHÄUSE**



DEUTSCH

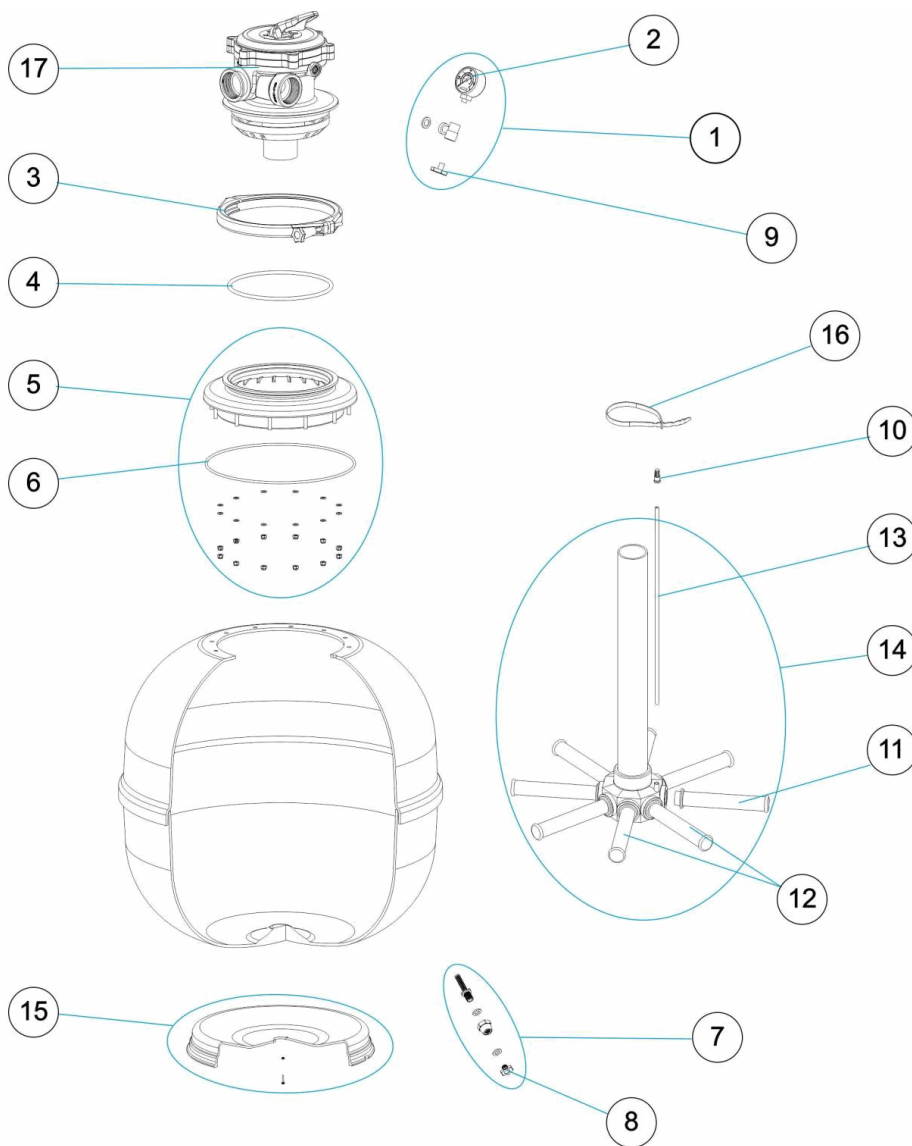
POS	CODE	BESCHREIBUNG	POS	CODE	BESCHREIBUNG
1	4404220101	MANOMETER KOMPLETT	10	4404040108	ENTLÜFTUNG
2	4404220102	MANOMETER 1/8" 3 KG/C "	11	* 4404300917	FILTERSTERN-SCHLITZROHR 1" 110 M "
3	4404040000	SET EINSATZ	12	4404010025	SET FILTERSTERN-SCHLITZROHR D. 400
4	4404080101	O-RING ABDECKUNG	13	4404300607	ROHR PVC HART L - 525
5	4405040405	SET FILTERRING	14	4404270019	SAMMELROHRSET D. 450 TOP 1"
6	4404020116	O-RING 255 X 4	15	4404010269	FILTERFUSS D. 550
7	4404010108	WASSERABLAß 3/8"	16	00471R0416	FLANSCH " UNEX" REF.2244"
8	4404040113	ABLAßSTOPFEN UND DICHTUNG	17	40794	VENTIL 1 1/2" TOP FLA "
9	4404130107	ABLAßSTOPFEN 1/4" ANONYM UND DICHTUN "			

CODE **36606**BESCHREIBUNG: **FILTER ASTER 550 TOP FÜR GEHÄUSE****HINWEISE**

POS	CODE	HINWEISE
11	4404300917	FÜR: 36606 [4UT]

CODIGO **36606**

DESCRIÇÃO: **FILTRO ASTER 550 TOP**



PORTUGUES

POS	CODIGO	DESCRIÇÃO	POS	CODIGO	DESCRIÇÃO
1	4404220101	MANÓMETRO COMPLETO	10	4404040108	PURGA AREIA
2	4404220102	MANOMETRO 1/8" 3 KG./C "	11	* 4404300917	BRAÇO COLECTOR 1" 110 M "
3	4404040000	CONJ.ANEL	12	4404010025	CJTO. BRAÇO COLECTOR D. 400
4	4404080101	JUNTA TÓRICA TAMPA	13	4404300607	TUBO PVC RÍGIDO L-525
5	4405040405	CONJUNTO ARO PROLONGADOR	14	4404270019	CJTO. COLECTOR D. 450 TOP 1"
6	4404020116	JUNTA TÓRICA 255X4	15	4404010269	PÉ FILTRO D. 550
7	4404010108	PURGA AGUA 3/8"	16	00471R0416	FLANGE UNEX 2244
8	4404040113	TAMPÃO PURGA E JUNTA	17	40794	VALVULA SELECTORA TOP 1 1/2" FLA "
9	4404130107	TAMPAO PURGA 1/4" ANONIMO COM JUNT "			

CODIGO **36606**DESCRIÇÃO: **FILTRO ASTER 550 TOP****OBSERVAÇÕES**

POS	CODIGO	OBSERVAÇÕES
11	4404300917	PARA: 36606 [4UT]