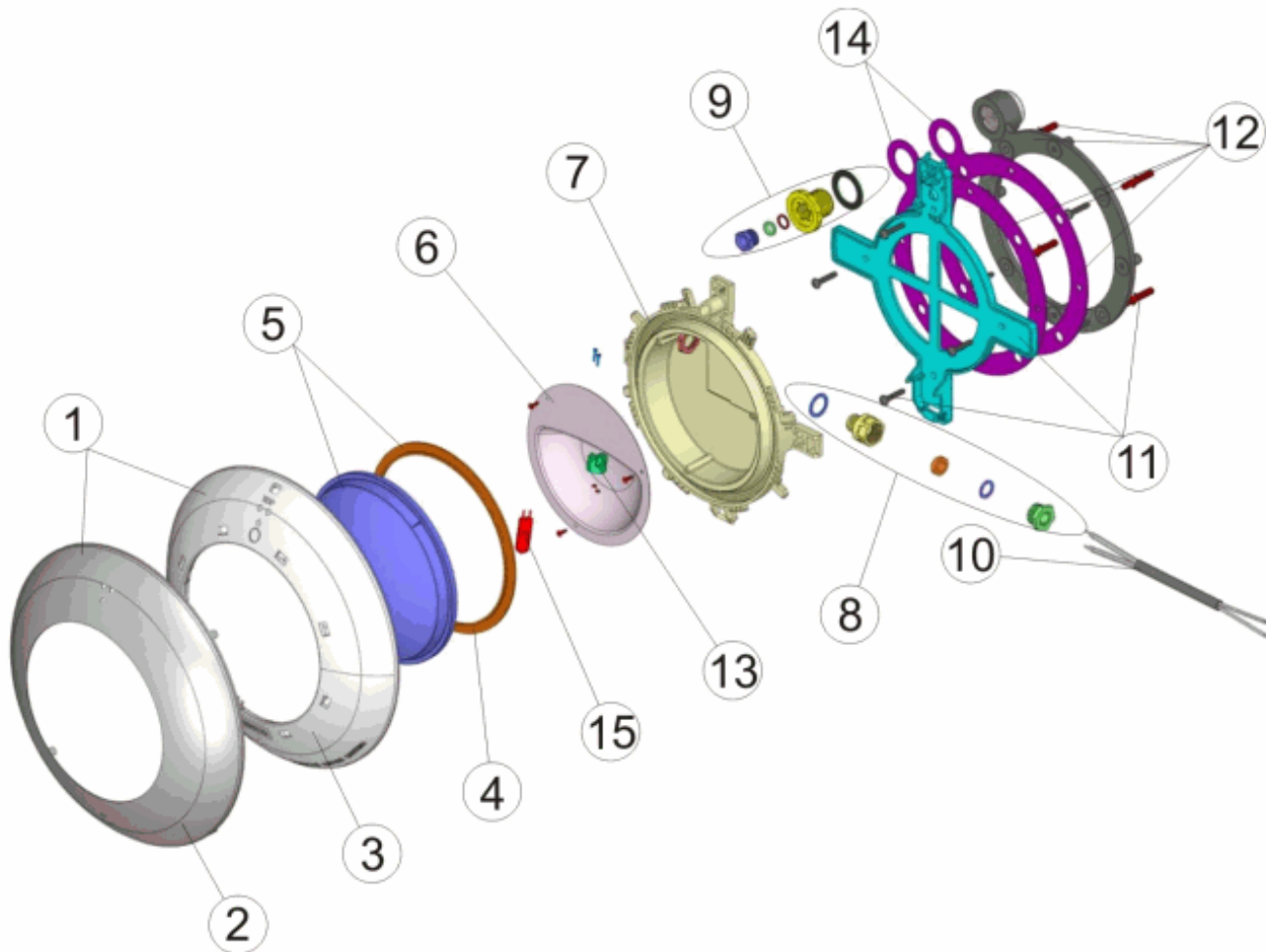


CODE **43452, 43454**

BESCHREIBUNG: **SCHEINWERFER EXTRA FLACH SCHWIMMBECKEN LINER
 BETON ZIERKAPPE WEISS/ROSTFREI**



DEUTSCHE

POS	CODE	BESCHREIBUNG	POS	CODE	BESCHREIBUNG
1	* 4403012301	SET VERZIERUNGSRING ROSTFREI	9	4403015702	SET QUETSCHVERSCHRAUBUNG
2	* 4403012304	VERZIERUNGSRING ROSTFREI	10	4403011905	KABEL UWS
3	* 4403011901	"BLENDE UWS ""EXTRA FLACH""	11	4403011906	"BEFESTIGUNGSSET UWS ""EXTRA FLACH"" BETON"
4	4403010102	DICHTUNG SILIKON UWS FLACH	12	4403015703	FIXIERSET EXTRA FLACHER SCHEINWERFER
5	4403012303	SILIKONDICHTUNG + O-RING	13	4403011407	LAMPENFASSUNG
6	4403011903	"LAMPENHALTERUNG + REFLEKTOR UWS ""EXTRA FLACH""	14	4403015704	KLEBEDICHTUNG FLACHSCHEINWERFER
7	4403011908	"LAMPENGEHÄUSE UWS ""EXTRA FLACH""	15	4403010069	LAMPE 12 V. 100 W.
8	4403011904	"PG 16 VERSCHRAUBUNG UWS ""EXTRA FLACH""			

CODE **43452, 43454**

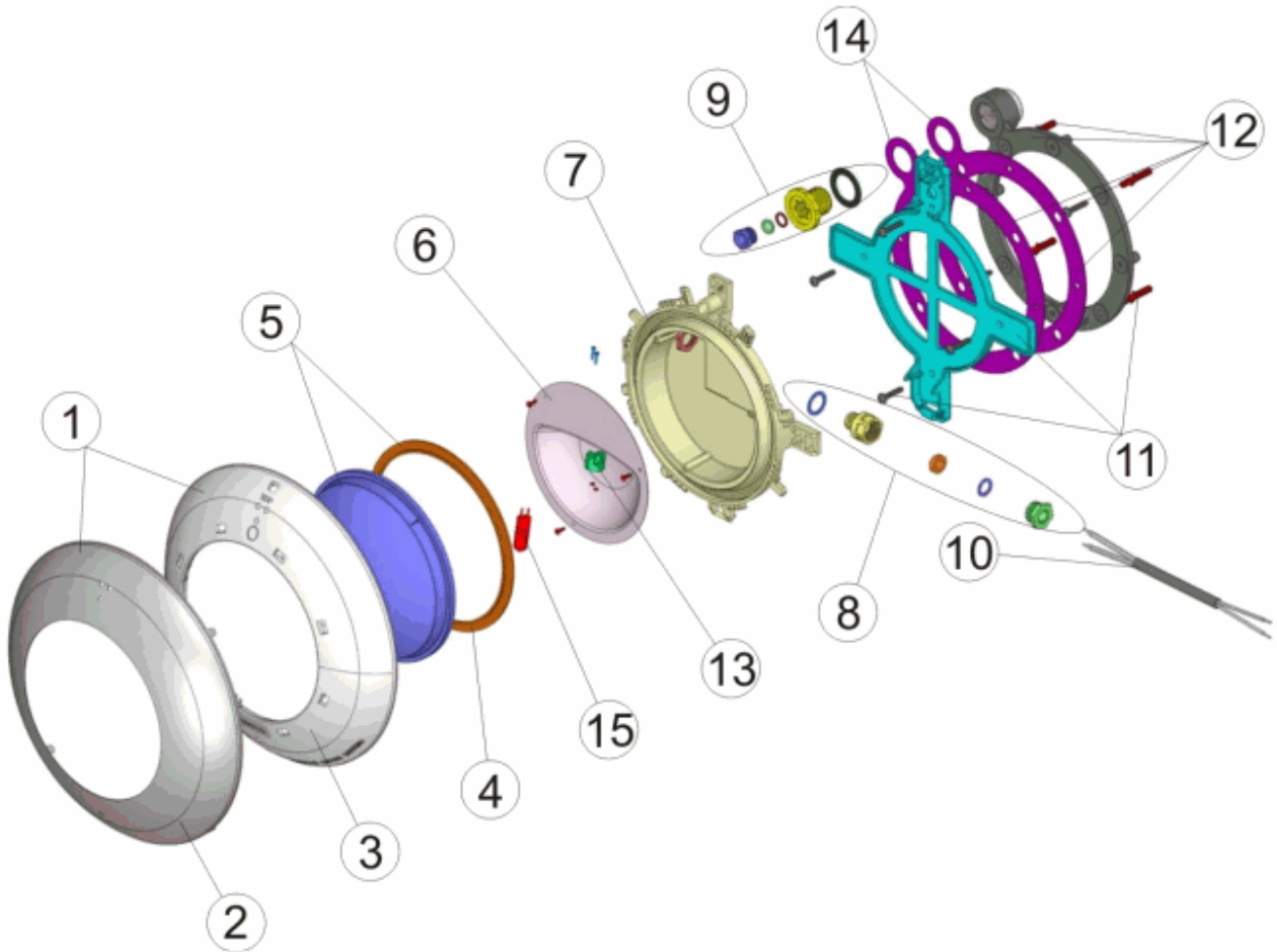
BESCHREIBUNG: **SCHEINWERFER EXTRA FLACH SCHWIMMBECKEN LINER
 BETON ZIERKAPPE WEISS/ROSTFREI**

HINWEISE

POSICIÓN	PIEZA	OBSERVACIÓN
1	4403012301	PARA 43454
2	4403012304	PARA 43454
3	4403011901	PARA 43452

CODE **43452, 43454**

DESCRIPTION: **EXTRA-FLAT LIGHT PREFAB LINER CONCRETE POOL
DECORATIVE CASE WHITE / STAINLESS STEEL**



ENGLISH

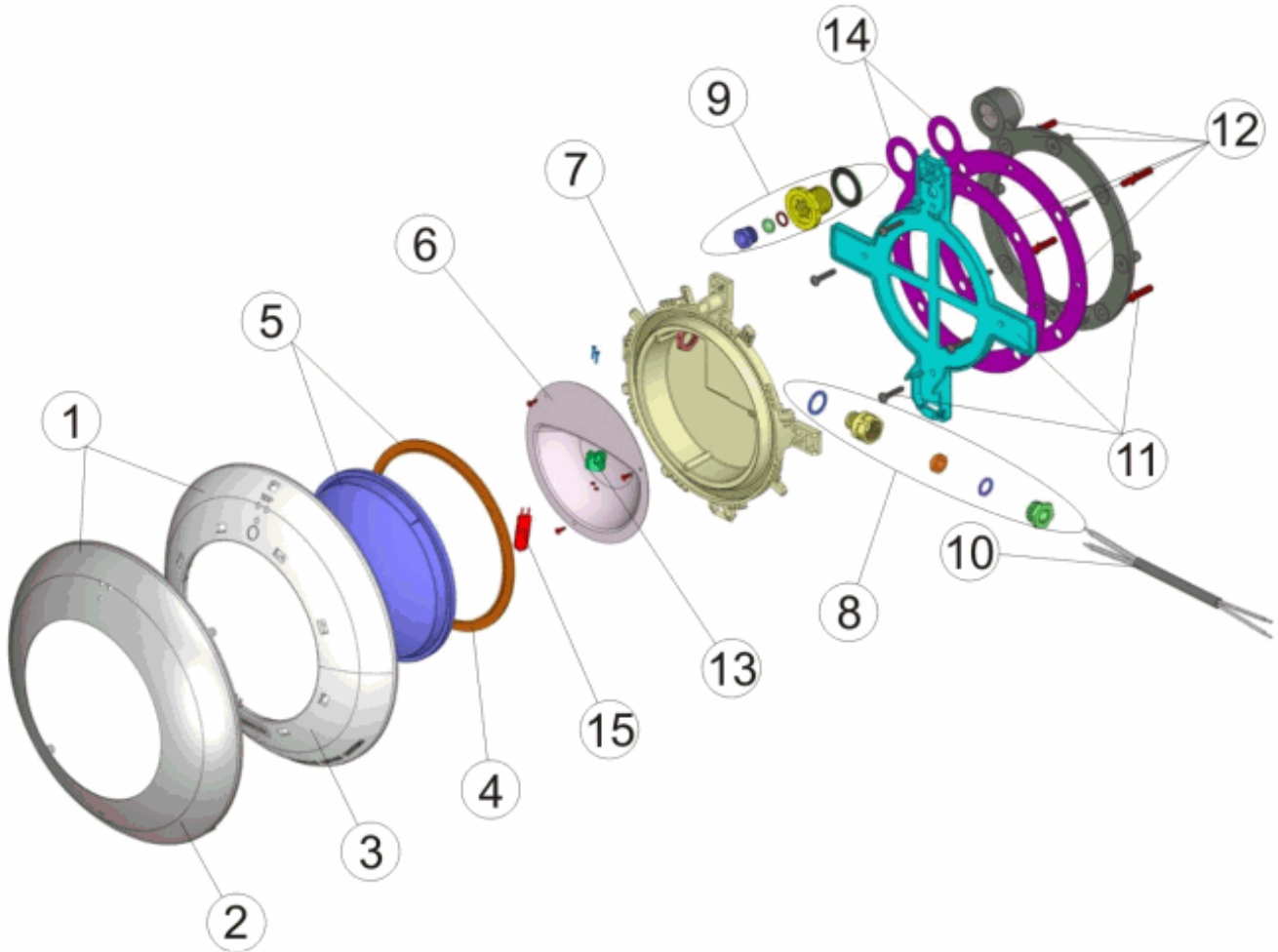
POS	CODE	DESCRIPTION	POS	CODE	DESCRIPTION
1	* 4403012301	SET RUSTPROOF DECORATIVE RING	9	4403015702	GLAND SEAL ASSY.
2	* 4403012304	RUSTPROOF DECORATIVE RING	10	4403011905	LIGHT CABLE
3	* 4403011901	FLAT LIGHT FACEPLATE	11	4403011906	LIGHT SUPPORT
4	4403010102	LIGHT SILICON GASKET	12	4403015703	FIXING UNIT EXTRA FLAT PROJECTOR
5	4403012303	CLEAR LENS + GASKET	13	4403011407	LAMP HOLDER
6	4403011903	LAMPHOLDER REFLECTOR PLATE	14	4403015704	ADHESIVE GASKET FLAT PROJECTOR
7	4403011908	LIGHT BODY	15	4403010069	LIGHTBULB 12 V. 100 W.
8	4403011904	NUT M-16			

CODE **43452, 43454**DESCRIPTION: **EXTRA-FLAT LIGHT PREFAB LINER CONCRETE POOL
DECORATIVE CASE WHITE / STAINLESS STEEL****OBSERVATIONS**

POSICIÓN	PIEZA	OBSERVACIÓN
1	4403012301	PARA 43454
2	4403012304	PARA 43454
3	4403011901	PARA 43452

CODIGO **43452, 43454**

DESCRIPCION: **PROY. EXTRA PLANOP. LINER HORM. EMB. BLANCO/INOX**



ESPAÑOL

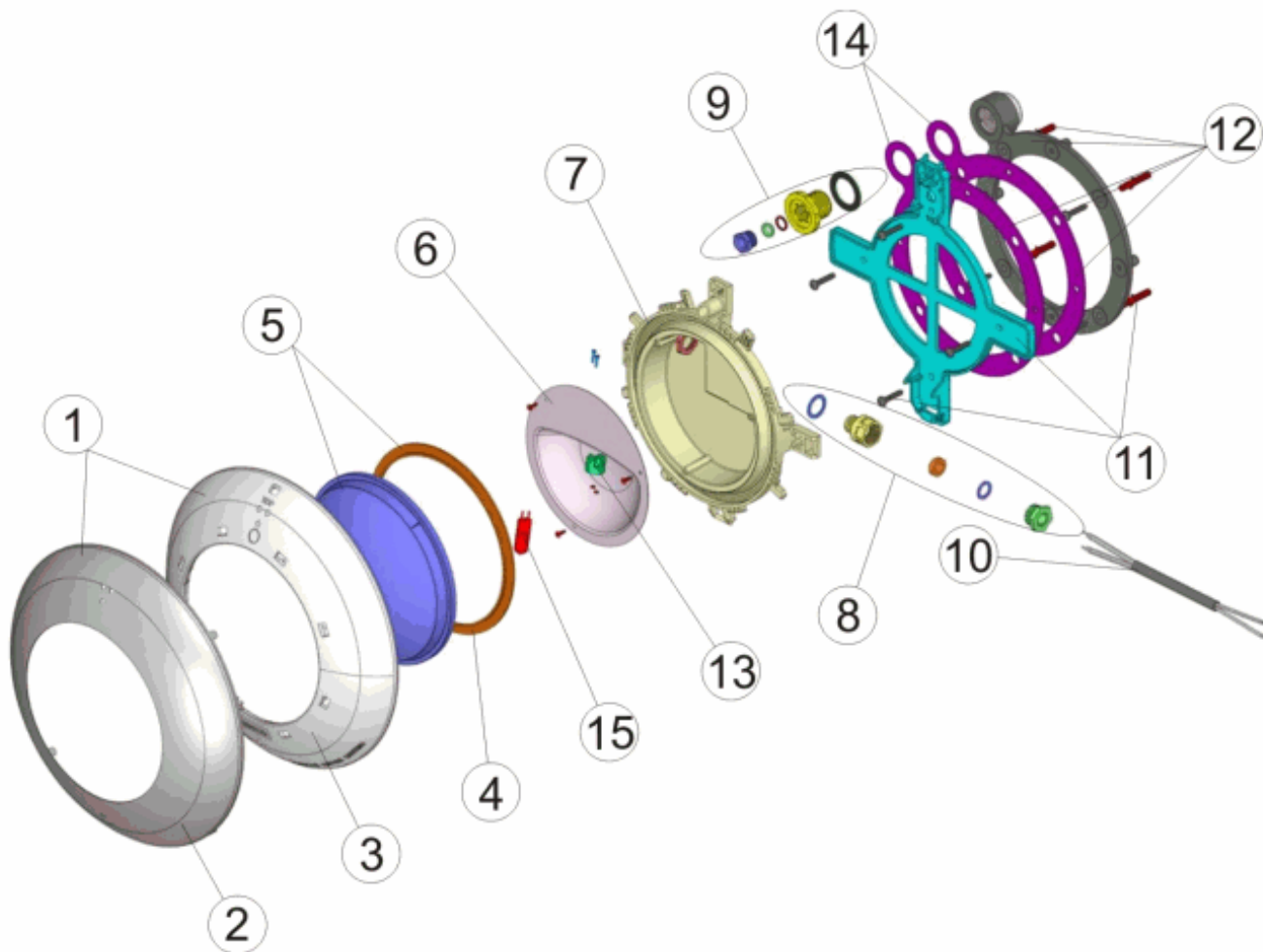
POS	CODIGO	DESCRIPCION	POS	CODIGO	DESCRIPCION
1	* 4403012301	CJTO. EMBELLECED. INOX PROJEC. EXTRA PLANO	9	4403015702	CJTO. PRENSAESTOPAS
2	* 4403012304	EMBELLECEDOR INOX PROYECTOR EXTRA PLANO	10	4403011905	CABLE PROYECTOR
3	* 4403011901	EMBELLECEDOR PROYECTOR PLANO	11	4403011906	SOPORTE PROYECTOR
4	4403010102	JUNTA SILICONA PROYECTOR	12	4403015703	CJTO. FIJACION PROYECTOR EXTRA PLANO
5	4403012303	LENTE TRANSPARENTE + JUNTA	13	4403011407	PORTALAMPARAS
6	4403011903	REFLECTOR PORTALAMPARAS	14	4403015704	JUNTA ADHESIVA PROYECTOR PLANO
7	4403011908	CUERPO PROYECTOR	15	4403010069	LAMPARA HALOGENA 12 V. 100 W.
8	4403011904	PRENSAESTOPAS M-16			

CODIGO **43452, 43454**DESCRIPCION: **PROY. EXTRA PLANOP. LINER HORM. EMB. BLANCO/INOX****OBSERVACIONES**

POSICIÓN	PIEZA	OBSERVACIÓN
1	4403012301	PARA 43454
2	4403012304	PARA 43454
3	4403011901	PARA 43452

CODE **43452, 43454**

DESCRIPTION: **PROJ. EXTRA PLAT P. LINER BÉTON ENJ. BLANC/INOX**



FRANCAIS

POS	CODE	DESCRIPTION	POS	CODE	DESCRIPTION
1	* 4403012301	ENSEMBLE ANNEAU ENJOLIVER INOX	9	4403015702	ENS. PRESSE ETOUPE
2	* 4403012304	ANNEAU ENJOLIVER INOX	10	4403011905	CABLE DE PROJECTEUR
3	* 4403011901	ENJOLIVEUR PROJECTEUR PLAT	11	4403011906	SUPPORT PROJECTEUR
4	4403010102	JOINT SILICONE PROJECTEUR	12	4403015703	ENS. FIXATION PROJECTEUR EXTRA PLAT
5	4403012303	LENTE PROJECTEUR + JOINT	13	4403011407	PORTE-LAMPE
6	4403011903	REFLECTEUR PORTE LAMPE	14	4403015704	JOINT ADHESIF PROJECTEUR PLAT
7	4403011908	CORPS DU PROJECTEUR	15	4403010069	LAMPE 12 V. 100 W.
8	4403011904	PRESSE ETOUPE M16			

CODE **43452, 43454**

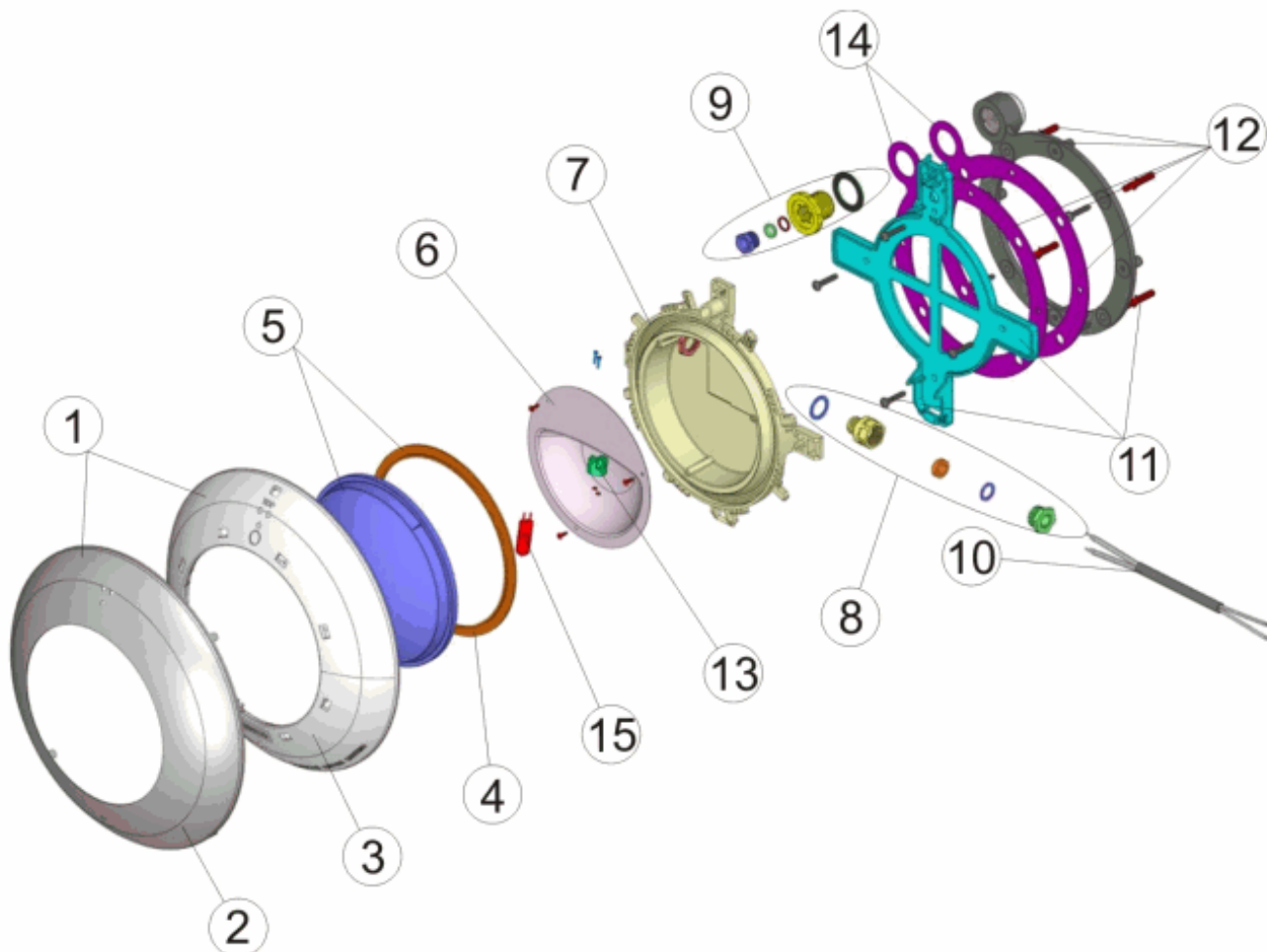
DESCRIPTION: **PROJ. EXTRA PLAT P. LINER BÉTON ENJ. BLANC/INOX**

OBSERVATIONS

POSICIÓN	PIEZA	OBSERVACIÓN
1	4403012301	PARA 43454
2	4403012304	PARA 43454
3	4403011901	PARA 43452

CODICE **43452, 43454**

DESCRIZIONE: **PROIETTORE EXTRA PIANO LINER CEMENTO PLACCA
BIANCO/INOX**



ITALIANO

POS	CODICE	DESCRIZIONE	POS	CODICE	DESCRIZIONE
1	* 4403012301	KIT ANELLO ORNAMENTALE INOSSID.	9	4403015702	KIT PRESSACAVI
2	* 4403012304	ANELLO ORNAMENTALE INOSSID.	10	4403011905	CAVO FARO
3	* 4403011901	ANELLO FRONTALE FARO PIATTO	11	4403011906	SUPPORTO FARO
4	4403010102	GUARNIZIONE SILICONE FARO	12	4403015703	KIT FISSAGGIO FARO EXTRA PIATTO
5	4403012303	LENTE PROIETTORE + GUERNIZIONE	13	4403011407	PORTALAMPADE
6	4403011903	RIFLETTORE PORTALAMPADE	14	4403015704	GUARNIZIONE ADESIVA FARO PIATTO
7	4403011908	CORPO FARO	15	4403010069	LAMPADINA 12 V. 100 W.
8	4403011904	PRESSACAVI M16			

CODICE **43452, 43454**

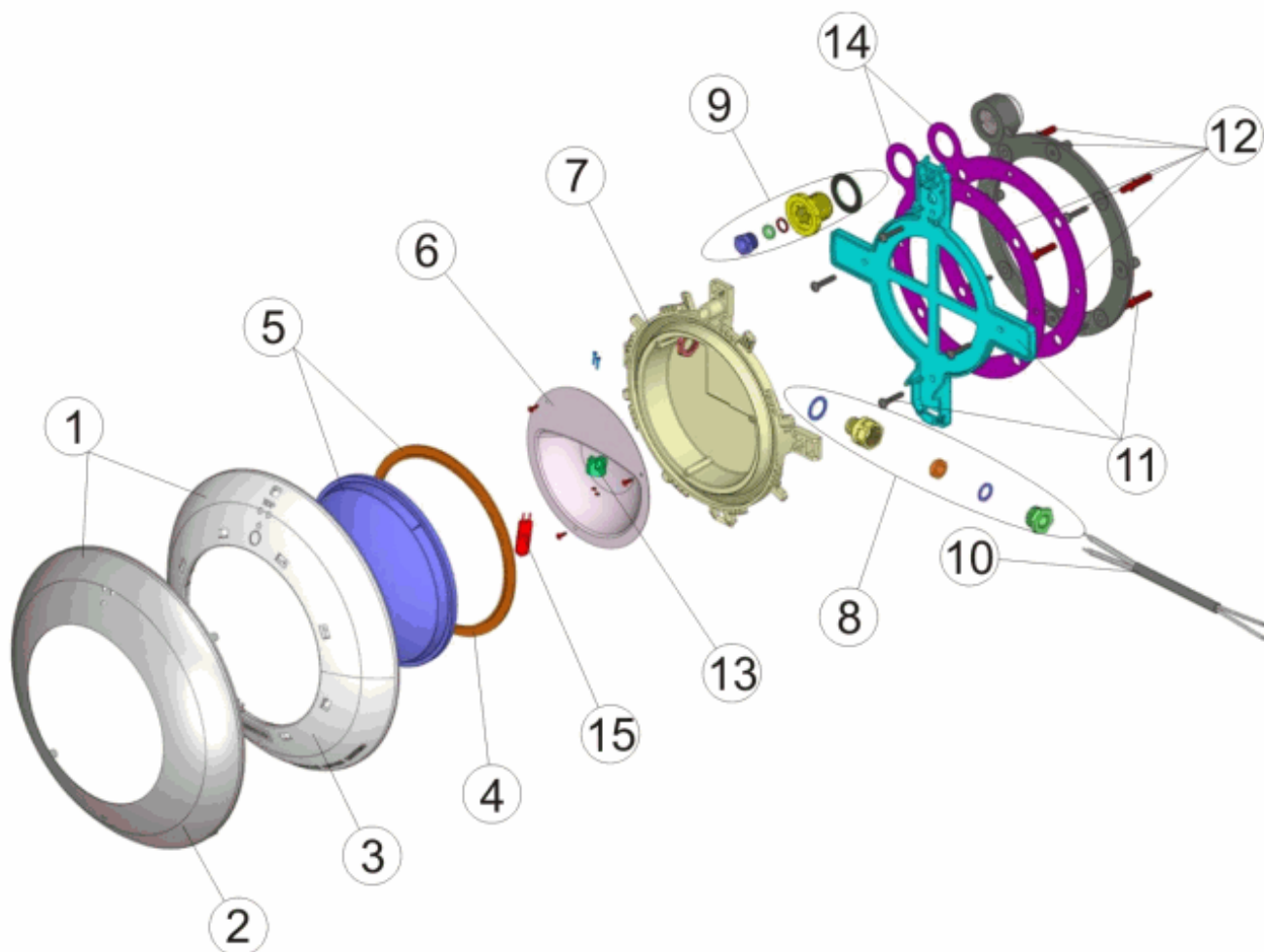
DESCRIZIONE: **PROIETTORE EXTRA PIANO LINER CEMENTO PLACCA
 BIANCO/INOX**

OSSERVAZIONI

POSICIÓN	PIEZA	OBSERVACIÓN
1	4403012301	PARA 43454
2	4403012304	PARA 43454
3	4403011901	PARA 43452

CODIGO **43452, 43454**

DESCRIÇÃO: **PROJ. EXTRA PLANO P. LINER BETÃO P. DEC. BRANCO/INOX**



PORTUGUES

POS	CODIGO	DESCRIÇÃO	POS	CODIGO	DESCRIÇÃO
1	* 4403012301	CJTO. ANEL DECORATIVO INOXIDABLE	9	4403015702	CONJ.CAIXA DE VEDAÇÃO
2	* 4403012304	ANEL DECORATIVO INOXIDABLE	10	4403011905	CABO PROJECTOR
3	* 4403011901	EMBELEZADOR PROJECTOR PLANO	11	4403011906	SUPORTE PROJECTOR
4	4403010102	JUNTA SILICONE PROTECTOR	12	4403015703	CONJ.FIXAÇÃO PROJECTOR EXTRA PLANO
5	4403012303	LENTE TRANSPARENTE + JUNTA	13	4403011407	PORTA-LÂMPADA
6	4403011903	REFLECTOR PORTA-LÂMPADAS	14	4403015704	JUNTA ADESIVA PROJECTOR EXTRA PLANO
7	4403011908	CORPO PROJECTOR	15	4403010069	BOMBILHA 12 V. 100 W.
8	4403011904	BUCIN M-16			

CODIGO **43452, 43454**DESCRIÇÃO: **PROJ. EXTRA PLANO P. LINER BETÃO P. DEC. BRANCO/INOX****OBSERVAÇÕES**

POSICIÓN	PIEZA	OBSERVACIÓN
1	4403012301	PARA 43454
2	4403012304	PARA 43454
3	4403011901	PARA 43452