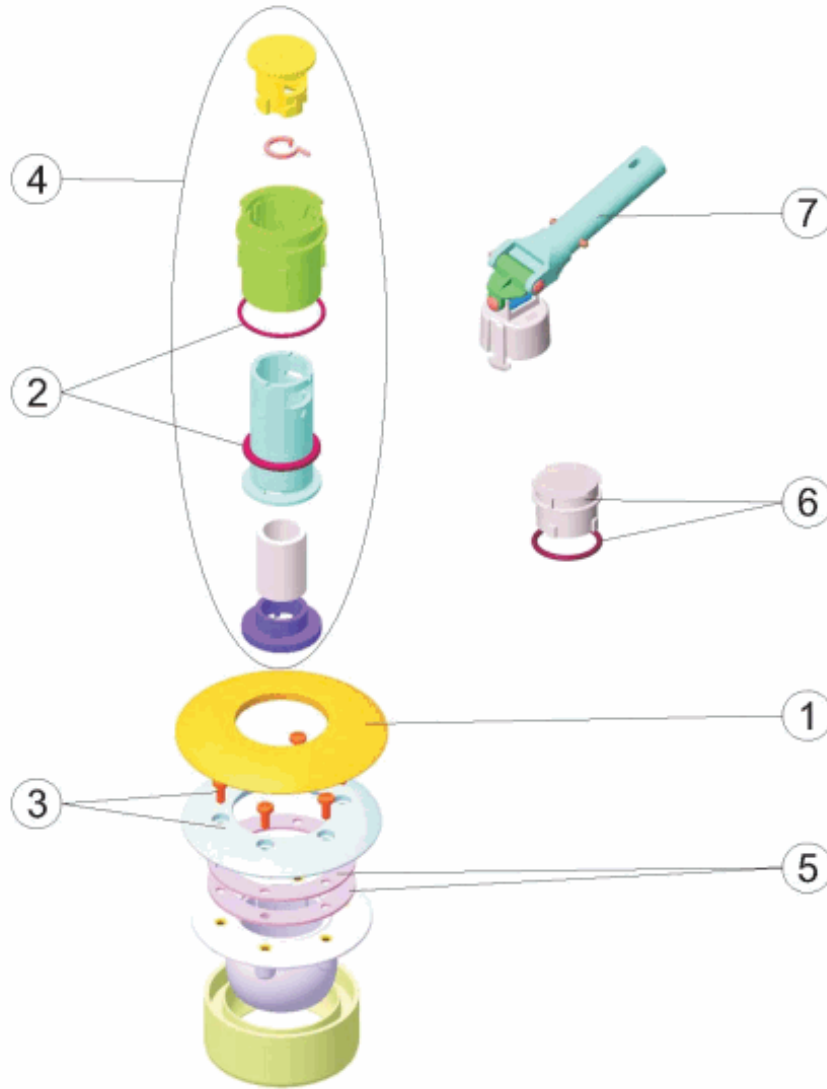


CODE **43584, 43585**

BESCHREIBUNG: **DÜSE 'N' AUSRICHTBARER LINER GEWINDE - SELBSTPRÄGEND**



DEUTSCHE

POS	CODE	BESCHREIBUNG	POS	CODE	BESCHREIBUNG
1	4402047401	ABDECKBLENDE	4	4402044505	SET HAUPTKÖRPER
2	4402047402	DICHTUNGEN	5	4402044602	DICHTUNGSSATZ
3	* 4402046605	FLSNSCH MIT SCHRAUBEN METRISCH	6	4402044507	SET DECKEL ÜBERWINTERUNG
3	* 4402047403	FLANSCHSATZ ABS BODEN-ED	7	4402044504	SET SCHLÜSSEL NET'N'CLEAN

CODE **43584, 43585**

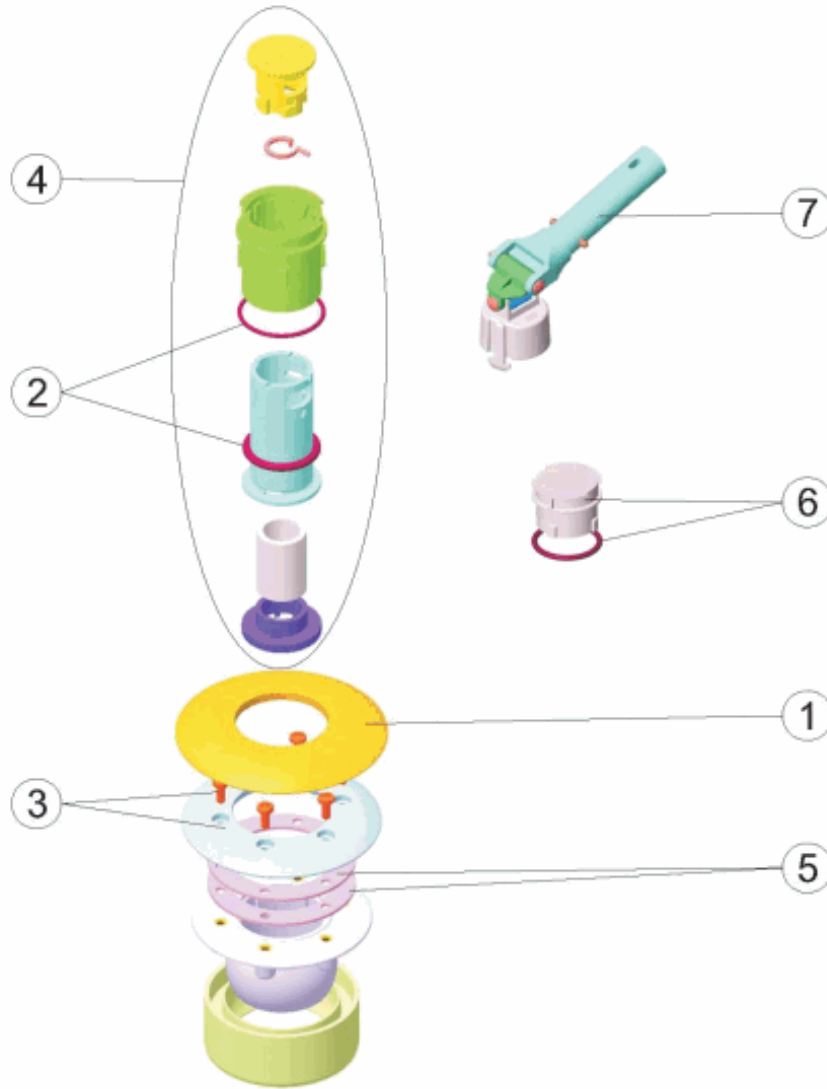
BESCHREIBUNG: **DÜSE 'N' AUSRICHTBARER LINER GEWINDE - SELBSTPRÄGEND**

HINWEISE

POSICIÓN	PIEZA	OBSERVACIÓN
3	4402046605	PARA 43584
3	4402047403	PARA 43585

CODE **43584, 43585**

DESCRIPTION: **ADJUSTABLE 'N' NOZZLE THREAD-FORMING SCREW**



ENGLISH

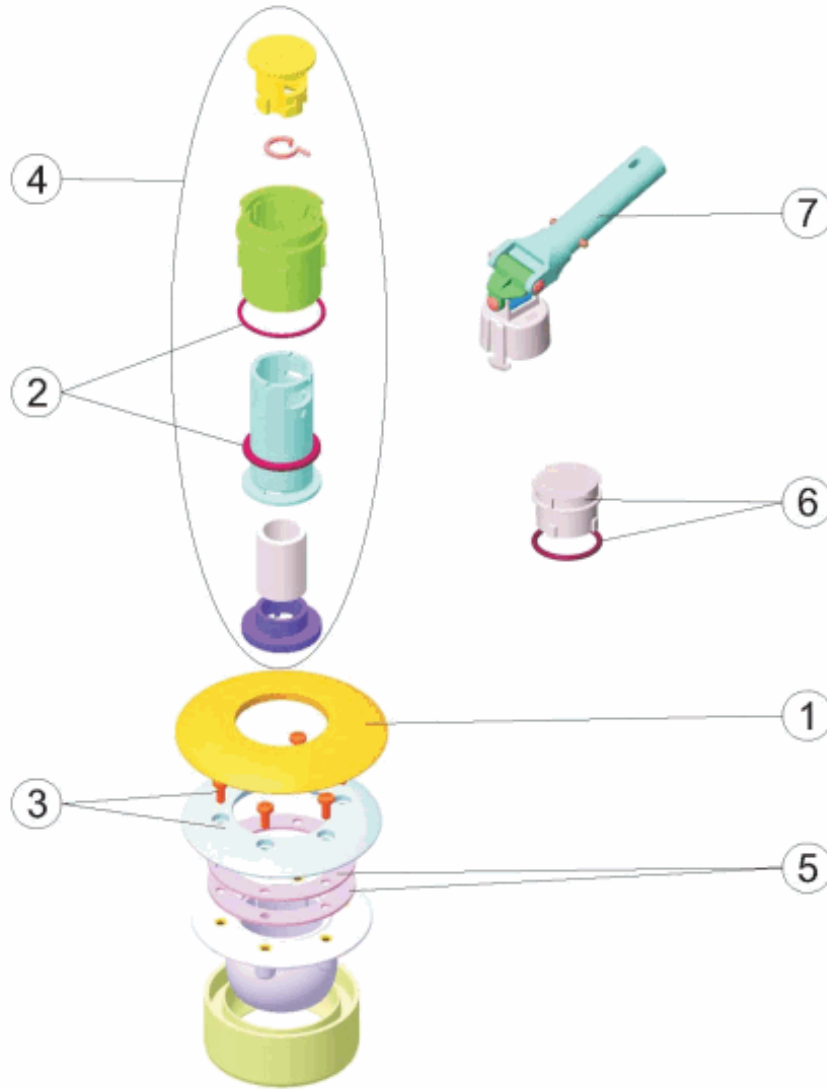
POS	CODE	DESCRIPTION	POS	CODE	DESCRIPTION
1	4402047401	FACEPLATE INLET	4	4402044505	MAIN BODY ASSY
2	4402047402	GASKETS	5	4402044602	GASKET ASSEMBLY
3	* 4402046605	FLANGE WITH METRIC BOLTS	6	4402044507	WINTERIZING COVER ASSY
3	* 4402047403	INLET FLANGE	7	4402044504	NET'N'CLEAN SPANNER ASSY

CODE **43584, 43585**DESCRIPTION: **ADJUSTABLE 'N' NOZZLE THREAD-FORMING SCREW****OBSERVATIONS**

POSICIÓN	PIEZA	OBSERVACIÓN
3	4402046605	PARA 43584
3	4402047403	PARA 43585

CODIGO **43584, 43585**

DESCRIPCION: **BOQUILLA ' N' LINER ORIENTABLE ROSCA - AUTORROSCANTE**



ESPAÑOL

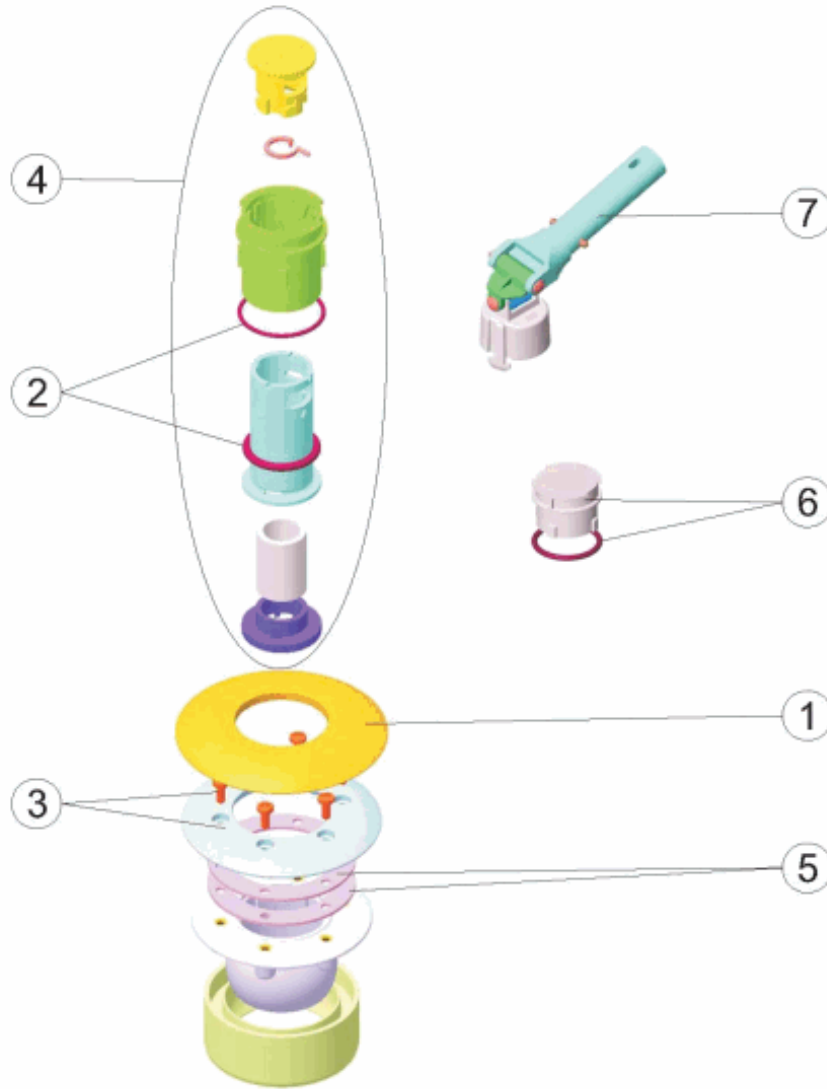
POS	CODIGO	DESCRIPCION	POS	CODIGO	DESCRIPCION
1	4402047401	EMBELLECEDOR BOQUILLA	4	4402044505	CJTO. CUERPO PRINCIPAL
2	4402047402	JUNTAS CUERPO PRINCIPAL	5	4402044602	CJTO. JUNTAS
3	* 4402046605	BRIDA CON TORNILLOS METRICO	6	4402044507	CJTO. TAPA INVERNAJE
3	* 4402047403	BRIDA BOQUILLA 'N' C P.P.	7	4402044504	CJTO. LLAVE NET'N'CEAN

CODIGO **43584, 43585**DESCRIPCION: **BOQUILLA ' N' LINER ORIENTABLE ROSCA - AUTORROSCANTE****OBSERVACIONES**

POSICIÓN	PIEZA	OBSERVACIÓN
3	4402046605	PARA 43584
3	4402047403	PARA 43585

CODE **43584, 43585**

DESCRIPTION: **BUSE N' N' LINER ORIENTABLE VIS - AUTOTARAUDEUSE**



FRANCAIS

POS	CODE	DESCRIPTION	POS	CODE	DESCRIPTION
1	4402047401	ENJOLIVEUR	4	4402044505	ENS. CORPS PRINCIPAL
2	4402047402	JOINT	5	4402044602	ENSEMBLE JOINTS
3	* 4402046605	BRIDE AVEC VIS MÉTRIQUE	6	4402044507	ENS. COUVERCLE HIVERNAGE
3	* 4402047403	BRIDE DE BOUCHE	7	4402044504	ENS. CLE NET'N'CEAN

CODE **43584, 43585**

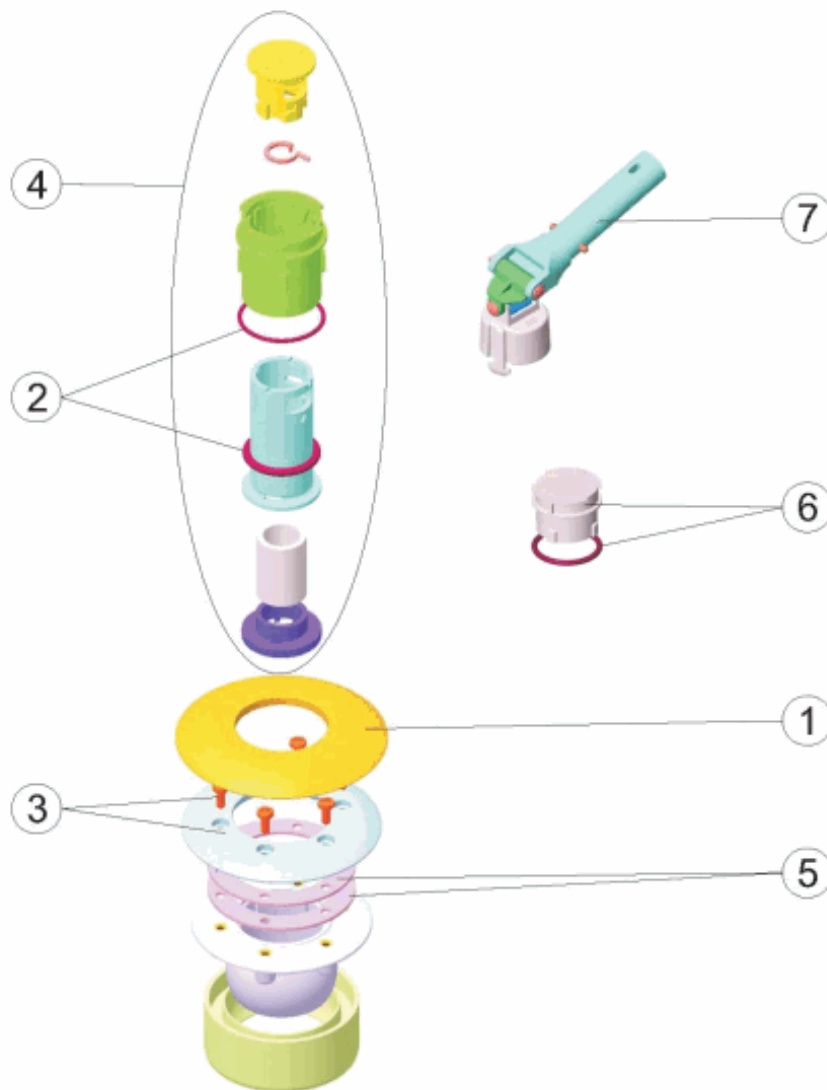
DESCRIPTION: **BUSE N' N' LINER ORIENTABLE VIS - AUTOTARAUDEUSE**

OBSERVATIONS

POSICIÓN	PIEZA	OBSERVACIÓN
3	4402046605	PARA 43584
3	4402047403	PARA 43585

CODICE **43584, 43585**

DESCRIZIONE: **BOCCHETTA N' LINER ORIENTABILE CON FILETTO AUTOFILETTANTE**



ITALIANO

POS	CODICE	DESCRIZIONE	POS	CODICE	DESCRIZIONE
1	4402047401	FLANGIA	4	4402044505	GRUPPO CORPO PRINCIPALE
2	4402047402	GUARNIZIONI	5	4402044602	GRUPPO GUARNIZIONI
3	* 4402046605	FLANGIA CON VITI METRICHE	6	4402044507	GRUPPO COPERCHIO INVERNAMENTO
3	* 4402047403	FLANGIA BOCCHETTA	7	4402044504	GRUPPO CHIAVE NET'N'CEAN

CODICE **43584, 43585**

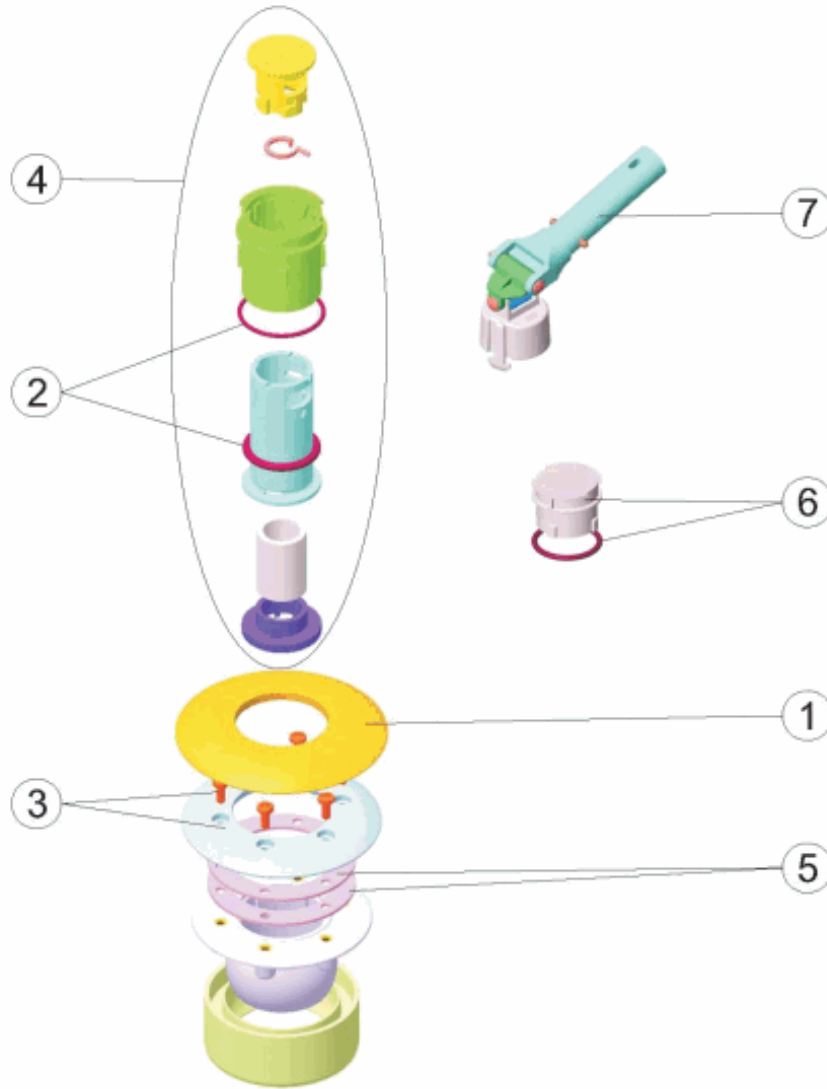
DESCRIZIONE: **BOCCHETTA N' LINER ORIENTABILE CON FILETTO
 AUTOFILETTANTE**

OSSERVAZIONI

POSICIÓN	PIEZA	OBSERVACIÓN
3	4402046605	PARA 43584
3	4402047403	PARA 43585

CODIGO **43584, 43585**

DESCRIÇÃO: **BOQUILHA N' LINER ORIENTÁVEL ROSCA - AUTO-ROSCANTE**



PORTUGUES

POS	CODIGO	DESCRIÇÃO	POS	CODIGO	DESCRIÇÃO
1	4402047401	EMBELEZADOR	4	4402044505	CONJ.CORPO PRINCIPAL
2	4402047402	JUNTAS	5	4402044602	CONJUNTO JUNTAS
3	* 4402046605	BRIDA CON PARAFUSOS METRICO	6	4402044507	CONJ.TAMPA INVERNAJEM
3	* 4402047403	FLANGE BOCA	7	4402044504	CONJ. CHAVE NET'N'CLEAN

CODIGO **43584, 43585**DESCRIÇÃO: **BOQUILHA N' LINER ORIENTÁVEL ROSCA - AUTO-ROSCANTE****OBSERVAÇÕES**

POSICIÓN	PIEZA	OBSERVACIÓN
3	4402046605	PARA 43584
3	4402047403	PARA 43585