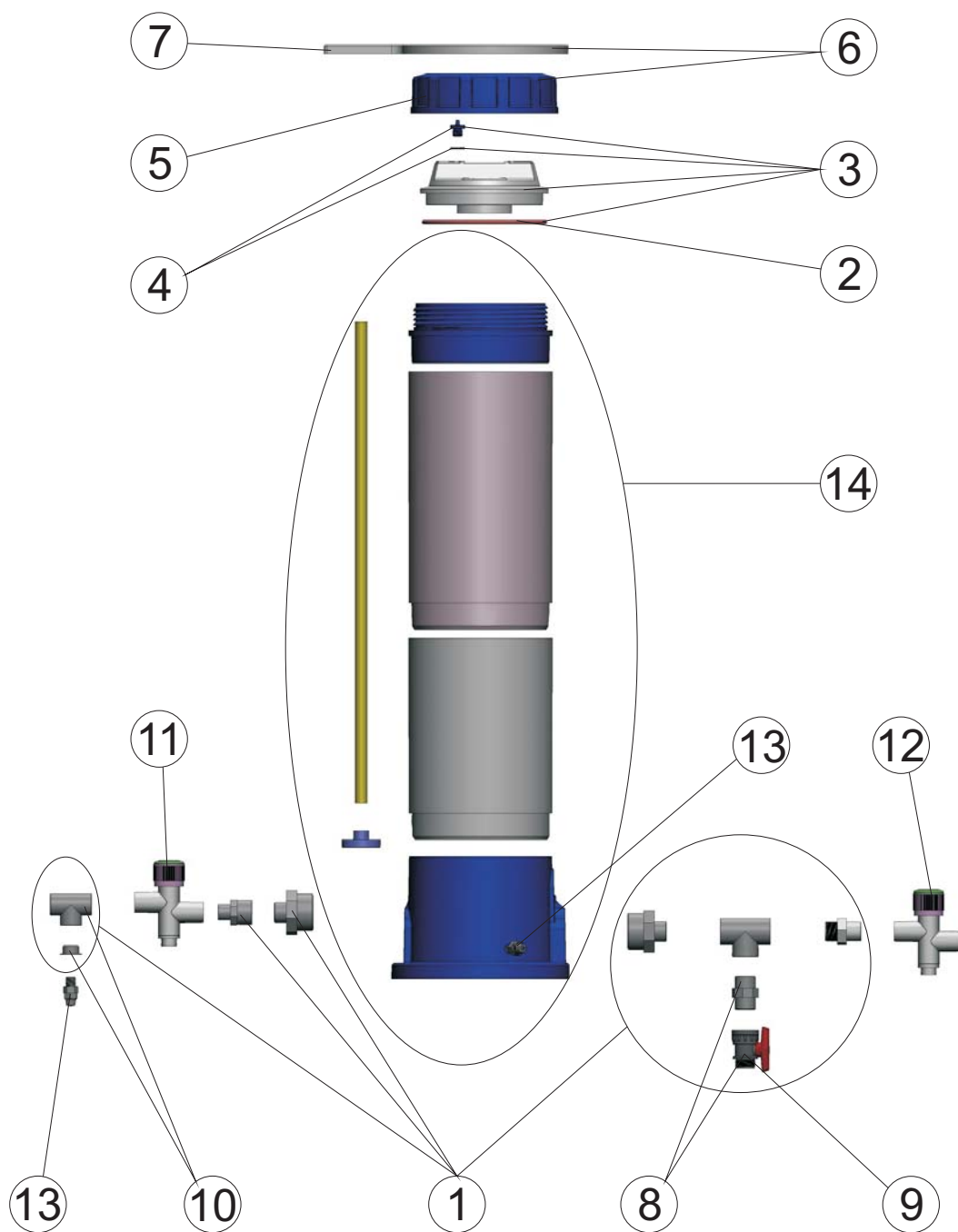


CODIGO : 43998
DESCRIPCION : DOSIFICADOR DE CLORO 10 KG.



POS.	CODIGO	DENOMINACION	POS.	CODIGO	DENOMINACION
1	4408033001	BOLSA ACCESORIOS DOSIFICADOR	8	4408010107	VALVULA DE BOLA Y MACHON
2	4408010103	JUNTA TORICA DOSIFICADOR	9	4404160807	VALVULA BOLA 3/4"
3	4408031605	TAPA CON JUNTA Y TAPON	10	4408010109	"TE" MIXTA CON RACORD
4	4408031604	TAPON CON JUNTA	11	4408010112	VALVULA REGULADORA SALIDA
5	4408010101	TUERCA FIJACION TAPA	12	4408010106	VALVULA REGULADORA ENTRADA
6	4408031606	TUERCA Y LLAVE	13	4408010104	ACCORD SUJECCION TUBO
7	4404130103	LLAVE TUERCA FILTRO	14	43998R0200	CUERPO DOSIFICADOR

ENGLISH

POS.	CODE	DESCRIPTION	POS.	CODE	DESCRIPTION
1	4408033001	ACCESORIES BAG DOSIFYER	8	4408010107	BALL VALVE AND PLUG
2	4408010103	LID O RING	9	4404160807	BALL VALVE 3/4"
3	4408031605	COVER WITH GASKET AND PLUG	10	4408010109	MIXED "TEE" WITH FITTING
4	4408031604	BLANKING PLUG AND 'O' RING	11	4408010112	ON-OFF REGULATOR VALVE
5	4408010101	LID LOCKING NUT	12	4408010106	REGULATOR VALVE
6	4408031606	NUT AND SPANNER	13	4408010104	TUBE NUT
7	4404130103	LID SPANNER	14	43998R0200	FEEDER 10 KG.

FRANÇAIS

POS.	CODE	DESCRIPTION	POS.	CODE	DESCRIPTION
1	4408033001	SAC ACCESSOIRES DOSEUR	8	4408010107	VANNE A BOISSEAU ET MACHON
2	4408010103	JOINT TORIQUE DOSEUR	9	4404160807	VANNE A BOISSEAU SPHERIQUE 3/4"
3	4408031605	COUVERCLE AVEC JOINT ET BOUCHON	10	4408010109	"TE" MIXTE AVEC RACCORD
4	4408031604	BOUCHON SKIMMER AVEC JOINT	11	4408010112	VANNE REGULATRICE ON-OFF
5	4408010101	ECROU FIXATION COUVERCLE	12	4408010106	VANNE DE CONTRÔLE
6	4408031606	ECROU ET CLE	13	4408010104	RACCORD DE FIXATION DU TUBE
7	4404130103	CLE ECROU DE FILTRE	14	43998R0200	CORPS DU DOSEUR 10 KG.

ITALIANO

POS.	CODE	DESCRIPTION	POS.	CODE	DESCRIPTION
1	4408033001	SACHETO ACCESSORI DOSIFICATORE	8	4408010107	VALVOLA A SFERA E RACCORDO
2	4408010103	O-RING PER DOSATORE	9	4404160807	VALVOLA A SFERA 3/4"
3	4408031605	COPERCHIO CON GUARNIZIONE E TAPPO	10	4408010109	"T" MISTA CON RACCORDO
4	4408031604	TAPPO CON GUARNIZIONE	11	4408010112	VALVOLA DI REGOLAZIONE ON-OFF
5	4408010101	GHIERA DI FISSAGGIO COPERCHIO	12	4408010106	VALVOLA DI REGOLAZIONE
6	4408031606	DADO E CHIAVE	13	4408010104	RACCORDO
7	4404130103	CHIAVE GHIERA PER FILTRO	14	43998R0200	CORPO DOSIFICATORE 10 KG.

DEUTSCH

POS.	CODE	DESCRIPTION	POS.	CODE	DESCRIPTION
1	4408033001	ZUBBEHÖR TASCHEN DOSIERER	8	4408010107	ENTLEERUNGSHAHN SCHLEUSE
2	4408010103	O-RING DECKEL SCHLEUSE	9	4404160807	KUGELVENTIL 3/4"
3	4408031605	DECKEL MIT DICHTUNG UND	10	4408010109	"T"-STÜCK ANSCHLUSS
4	4408031604	VERSCHLUSSKAPPE	11	4408010112	REGULIER-VENTIL ON-OFF
5	4408010101	ÜBERWURFMUTTER SCHLEUSE	12	4408010106	REGLER DOSIERMENGE SCHLEUSE
6	4408031606	ÜBERWURFMUTTER UND SCHLÜSSEL	13	4408010104	VERSCHRAUBUNG P/N-SCHLAUCH SCHLEUSE
7	4404130103	SCHLÜSSEL ÜBERWURFMUTTER SCHLEUSE	14	43998R0200	DOSIERKÖRPER

PORTUGUÊS

POS.	CODE	DESCRIPTION	POS.	CODE	DESCRIPTION
1	4408033001	ACESSÓRIOS SACO DOSIFICADOR	8	4408010107	VÁLVULA BOLA E CASQUILHO
2	4408010103	JUNTA TORICA DOSEADOR	9	4404160807	VALVULA BOLA 3/4"
3	4408031605	TAMPA COM JUNTA E TAMPÃO	10	4408010109	"TÉ" MISTO COM RACORD
4	4408031604	TAMPA COM JUNTA	11	4408010112	VÁLVULA REGULADORA ON-OFF
5	4408010101	PORCA FIXAÇÃO TAMPA	12	4408010106	VÁLVULA REGULADORA
6	4408031606	PORCA E CHAVE	13	4408010104	RACORD SUJEIÇÃO TUBO
7	4404130103	CHAVE PORCA FILTRO	14	43998R0200	CORPO DOSEADOR 10 KG.