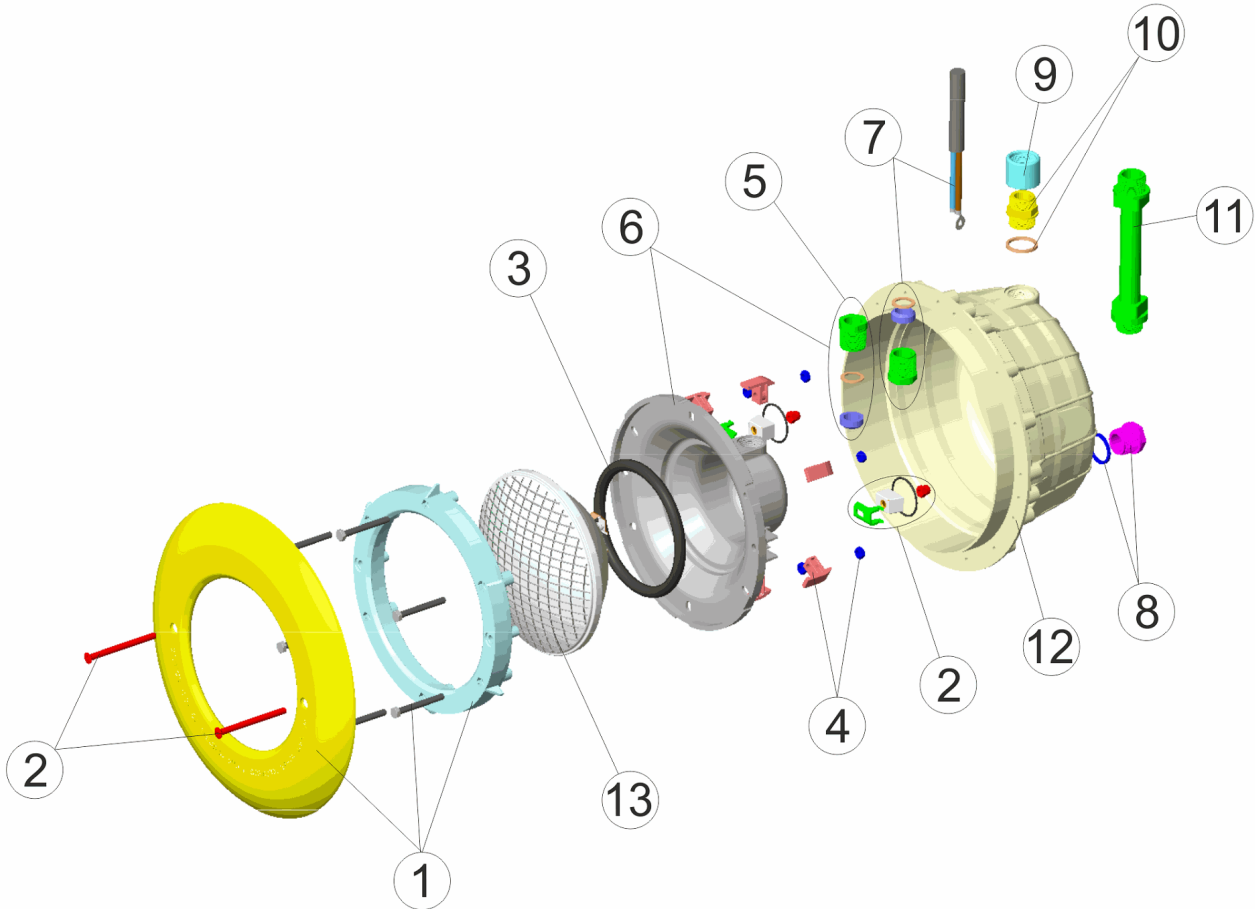


CODIGO **07666**

DESCRIPCION: **PROYECTOR STANDARD BLANCO CON CABLE**



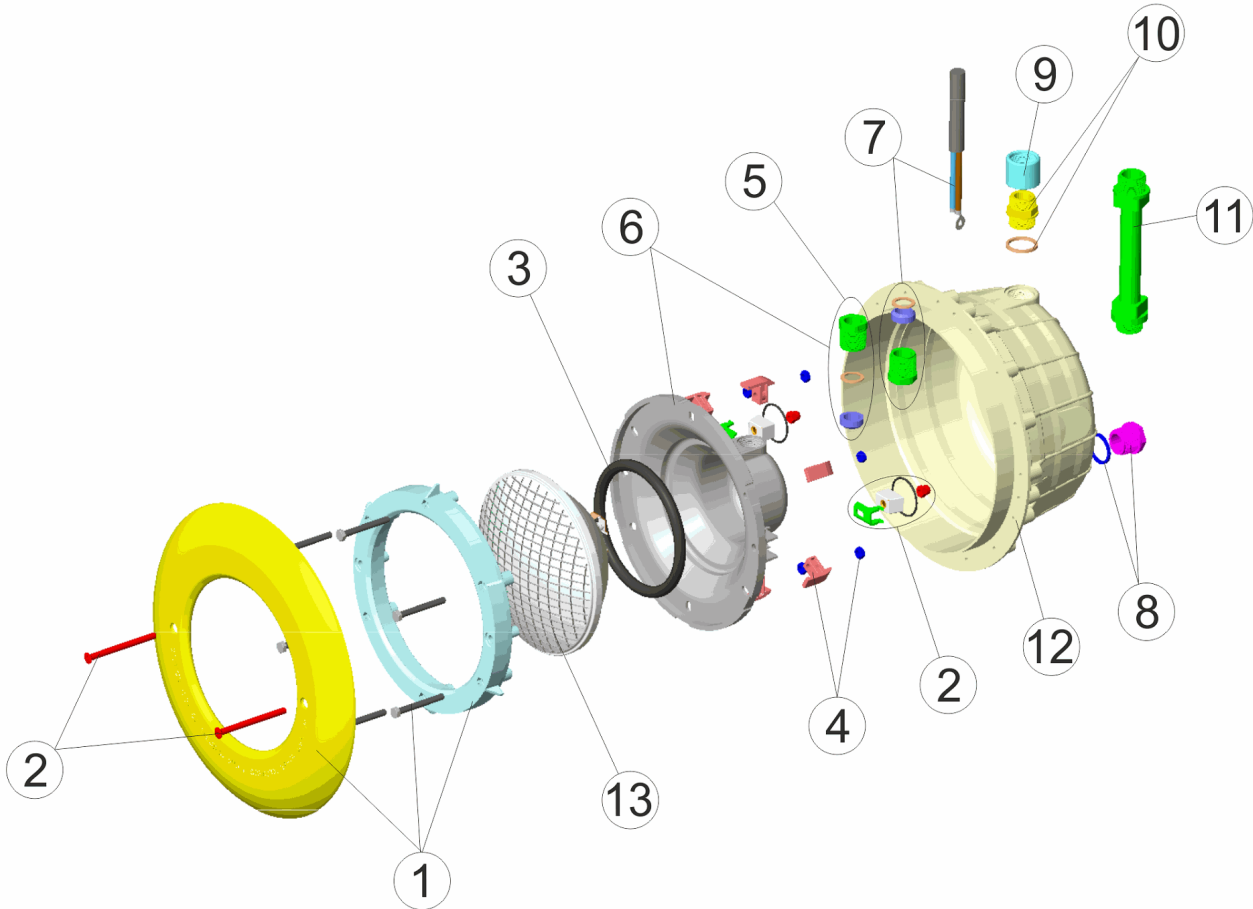
ESPAÑOL

POS	CODIGO	DESCRIPCION	POS	CODIGO	DESCRIPCION
1	4403010302	ARO BLANCO PROYECTOR	8	4403010080	TAPON NICHOS PROYECTOR
2	4403015002	CJTO. FIJACION PROYECTOR JELLY STD. A2	9	4403010802	MANGUITO M-25
3	4403010304	JUNTA TORICA PROYECTOR	10	4403010081	CUERPO PRENSAESTOPAS PROYECTOR M-25
4	4403010306	CLIP FIJACION PROYECTOR	11	4403010059	MANGUERA PASACABLES M-25 3/4"
5	4403010110	PRENSAESTOPAS M25 HALOGENO	12	07838R0006	NICHO PROYECTOR
6	4403016001	FONDO FOCO PROYECTOR M-25	13	00370	LAMPARA PAR 56 12.V. 300W
7	4403010314	CABLE PROYECTOR M-25 HALOGENO			

CODIGO **07666**DESCRIPCION: **PROYECTOR STANDARD BLANCO CON CABLE****OBSERVACIONES**

CODE **07666**

DESCRIPTION: **PROJECTEUR STANDARD BLANC AVEC CÂBLE**



FRANCAIS

POS	CODE	DESCRIPTION	POS	CODE	DESCRIPTION
1	4403010302	ENJOLIVEUR BLANC DE PROJECTEUR	8	4403010080	BOUCHON
2	4403015002	ENSEMBLE FIXATION PROJECTEUR JELLY STD. A2	9	4403010802	MANCHON M-25
3	4403010304	JOINT TORIQUE PROJECTEUR	10	4403010081	CORPS PRESSE ETOUPE M-25
4	4403010306	CLIP FIXATION PROJECTEUR	11	4403010059	TUYAU ANNEAU M-25
5	4403010110	PRESSE-ETOUPE M 25	12	07838R0006	NICHE PROJECTEUR
6	4403016001	FOND PROJECTEUR M-25	13	00370	LAMPE 12.V. 300W
7	4403010314	CABLE PROJECTEUR M-25			

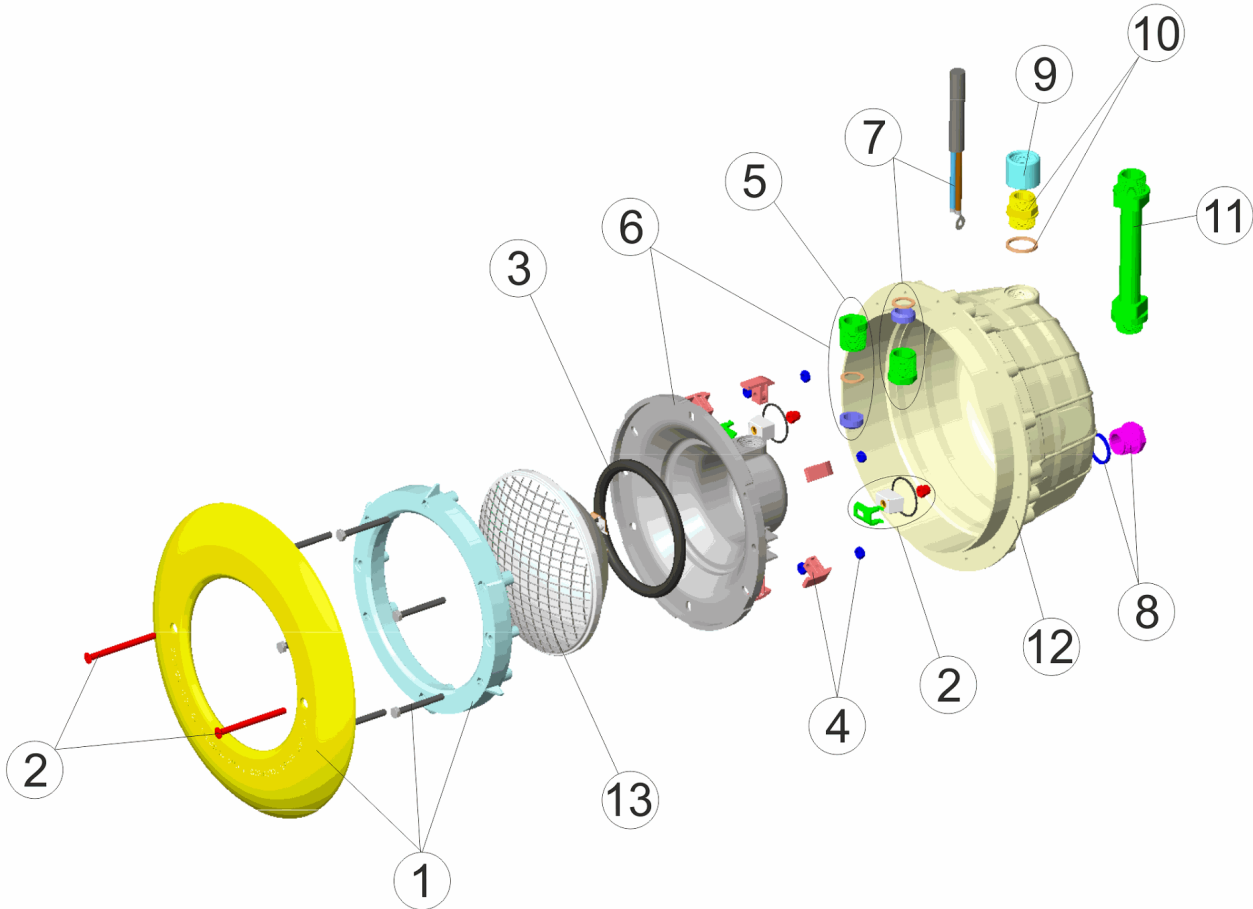
CODE **07666**

DESCRIPTION: **PROJECTEUR STANDARD BLANC AVEC CÂBLE**

OBSERVATIONS

CODE **07666**

DESCRIPTION: **WHITE STANDARD LIGHT WITH CABLE**



ENGLISH

POS	CODE	DESCRIPTION	POS	CODE	DESCRIPTION
1	4403010302	WHITE FACEPLATE	8	4403010080	HANDRAIL PLUNG
2	4403015002	FIXING SET UNDERWATER LIGHT JELLY STD. A2	9	4403010802	MUFF M-25
3	4403010304	LIGHT O RING	10	4403010081	PACKING GLAND M-25
4	4403010306	LIGHT FIXING CLIP	11	4403010059	HOSE CONDUIT M-25
5	4403010110	PACKING GLAND M 25	12	07838R0006	FLOODLAMP HOUSING
6	4403016001	BACK COVER M-25	13	00370	LIGHTBULB 12.V. 300W
7	4403010314	LIGHT CABLE M-25			

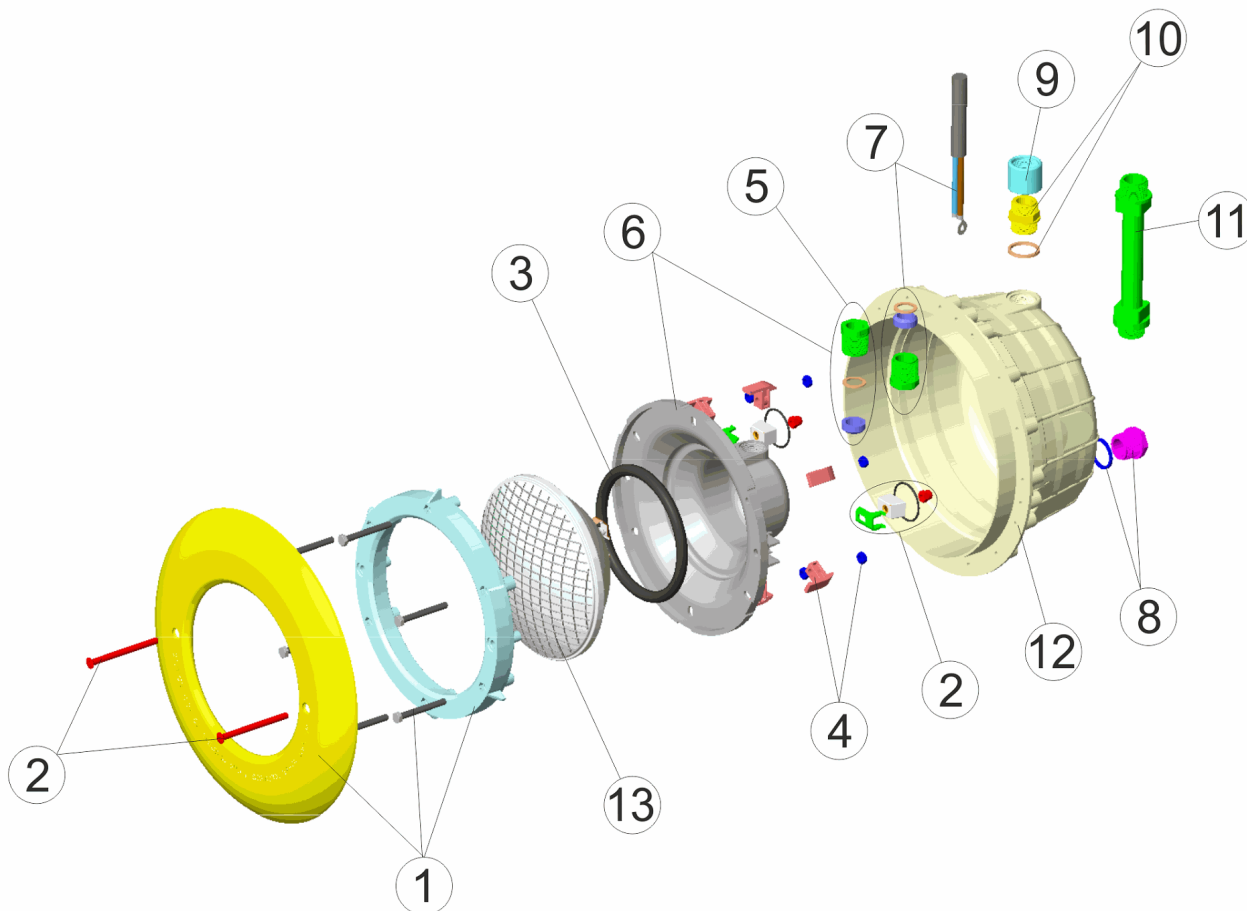
CODE **07666**

DESCRIPTION: **WHITE STANDARD LIGHT WITH CABLE**

OBSERVATIONS

CODICE **07666**

DESCRIZIONE: **FARO STANDARD BIANCO CON CAVO**



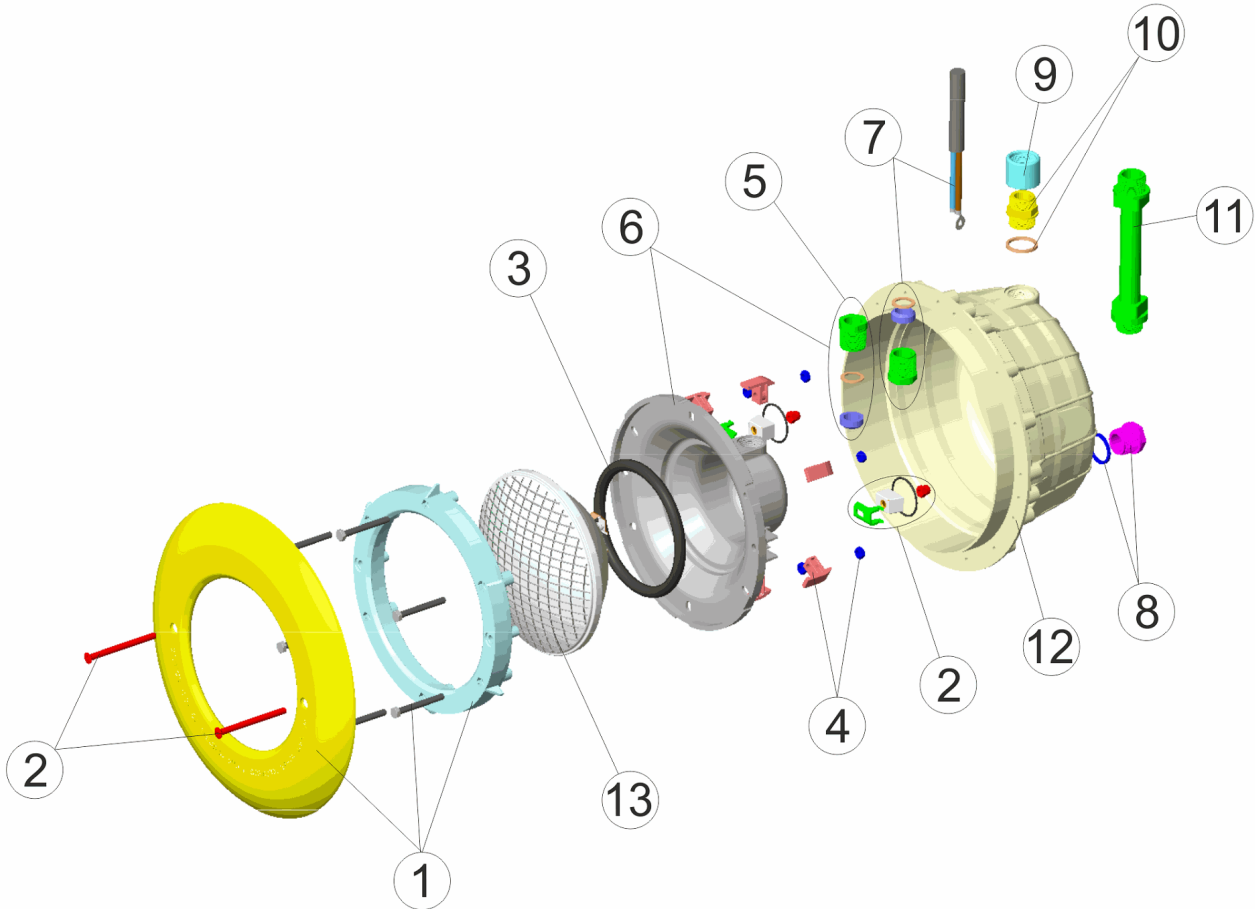
ITALIANO

POS	CODICE	DESCRIZIONE	POS	CODICE	DESCRIZIONE
1	4403010302	FLANGIA BIANCA FARO	8	4403010080	TAPPO
2	4403015002	KIT FISSAGGIO PROIETTORE JELLY STD. A2	9	4403010802	MANICOTTO M-25
3	4403010304	O-RING FARO	10	4403010081	CORPO PRESSACAVO M-25
4	4403010306	CLIP FISSAGGIO FARO	11	4403010059	TUBO PASSACAVO M-25
5	4403010110	PRESSACAVI M 25	12	07838R0006	NICCHIA PROIETTORE
6	4403016001	CALOTTA FARO M-25	13	00370	LAMPADINA 12.V. 300W
7	4403010314	CABLE PROJECTEUR M-25			

CODICE **07666**DESCRIZIONE: **FARO STANDARD BIANCO CON CAVO****OSSERVAZIONI**

CODE **07666**

BESCHREIBUNG: **SCHEINWERFER STANDARD WEISS MIT KABEL**



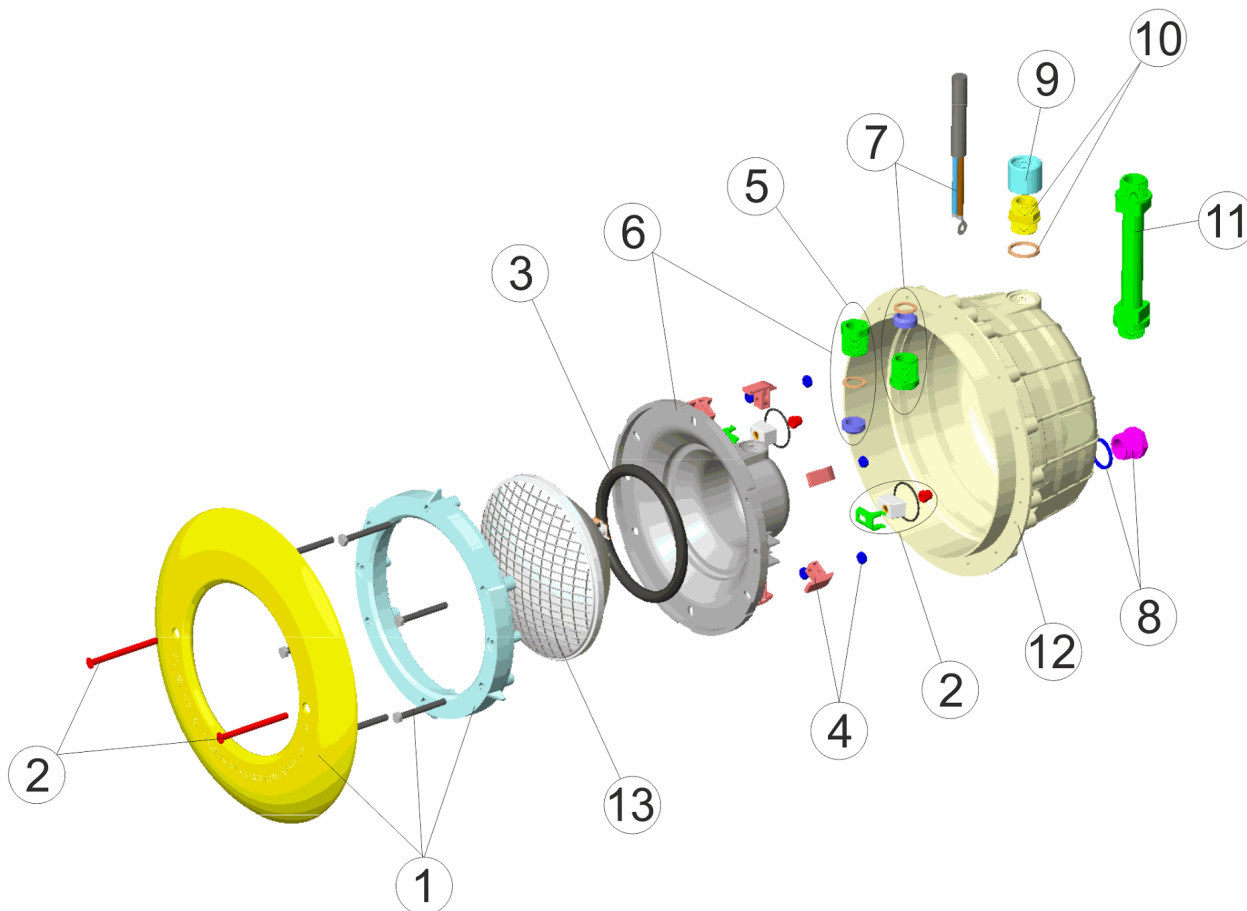
DEUTSCH

POS	CODE	BESCHREIBUNG	POS	CODE	BESCHREIBUNG
1	4403010302	BLENDE WEISS UWS	8	4403010080	KAPPE
2	4403015002	BEFESTIGUNGSSET SCHEINWERFER JELLY STD. A2	9	4403010802	MUFFE M-25
3	4403010304	O-RING UWS	10	4403010081	"QUETSCHVERSCHRAUBUNG TOPF UWS ""PS"" M-25
4	4403010306	BEFESTIGUNGSLIPSATZ UWS	11	4403010059	SCHLAUCH FÜR WANDDURCHFÜHRUNG
5	4403010110	QUETSCHVERSCHRAUBUNG M 25	12	07838R0006	EINBAUTOPF
6	4403016001	LAMPENGEHÄUSE M-25	13	00370	LAMPE 12.V. 300W
7	4403010314	KABEL UWS M-25			

CODE **07666**BESCHREIBUNG: **SCHEINWERFER STANDARD WEISS MIT KABEL****HINWEISE**

CODIGO **07666**

DESCRIÇÃO: **PROJECTOR STANDARD BRANCO COM CABO**



PORTUGUES

POS	CODIGO	DESCRIÇÃO	POS	CODIGO	DESCRIÇÃO
1	4403010302	ARO BRANCO PROJECTOR	8	4403010080	TAMPAO
2	4403015002	CONJUNTO FIXAÇÃO PROJECTOR JELLY STD. A2	9	4403010802	MANGUITO M-25
3	4403010304	JUNTA TÓRICA PROJECTOR	10	4403010081	CORPO BUCIN PROJECTOR M-25
4	4403010306	CLIP FIXAÇÃO PROJECTOR	11	4403010059	MANGUEIRA ANILHA M-25
5	4403010110	BUCIN M-25	12	07838R0006	NICHO PROJECTOR
6	4403016001	FUNDO FOCO PROJECTOR M-25	13	00370	BOMBILHA PAR 56 12.V. 300W
7	4403010314	CABO PROJECTOR M-25			

CODIGO **07666**DESCRIÇÃO: **PROJECTOR STANDARD BRANCO COM CABO****OBSERVAÇÕES**
