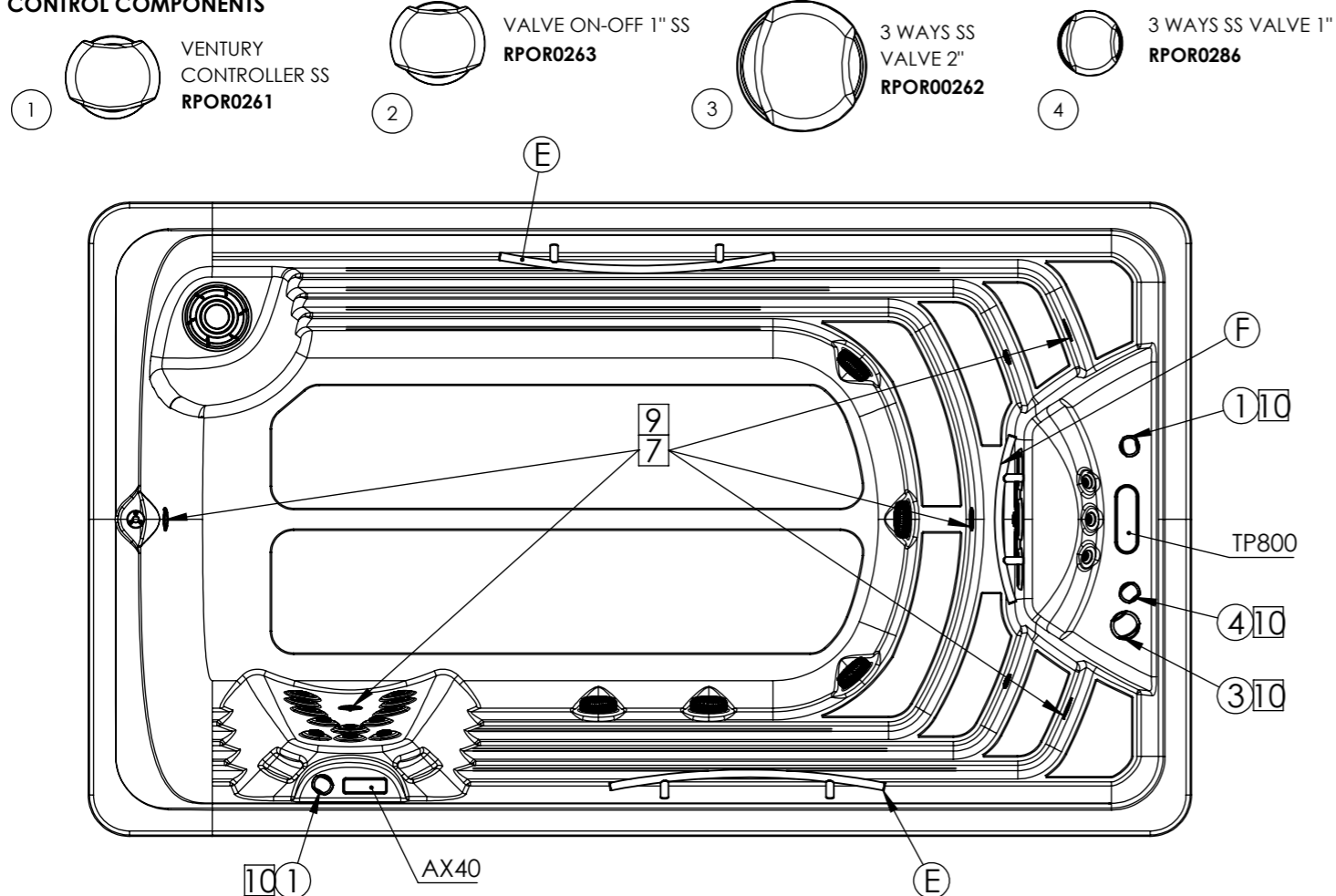


According to our policy of continuous improvement, dimensions, features or components of this product can be partially or completely changed without prior notice. It's Customer responsibility to verify that this is the last version of the drawing

Property of IBERSPA S.L. Avda. Pla d'Urgell 2-8 25200 Cervera, Spain. Don't use without permission. Keep this information confidential and use it solely for the permitted purpose.

CONTROL COMPONENTS



LIGHT COMPONENTS

- 7 SPOTLIGHT LED SET RD RPOR0239
- 8 MASTER LED LIGHT RPOR0240
- 9 LED SLAVE LIGHT RPOR0252
- 10 4 LEDS LIGHTS POINTS RPOR0267
- 11 1 LEDS LIGHTS POINTS RPOR0268
- LEDS TRANSFORMER 5V DC RPOR0280
- LEDS CONTROLLER RPOR0281

CONTROL PANELS

- CONTROL PANEL TP 800 RPOR00356
- COVER DIGITAL STANDARD PANEL TP800 RPOR00356-G
- CONTROL PANEL AX40 RPOR00357
- COVER DIGITAL STANDARD AUXILIAR PANEL AX40 RPOR00357-D
- SPATOUCH CONTROL PANEL RPOR0354 (OPTIONAL)
- COVER STANDARD PANE L SPATOUCH RPOR0354-B (OPTIONAL)

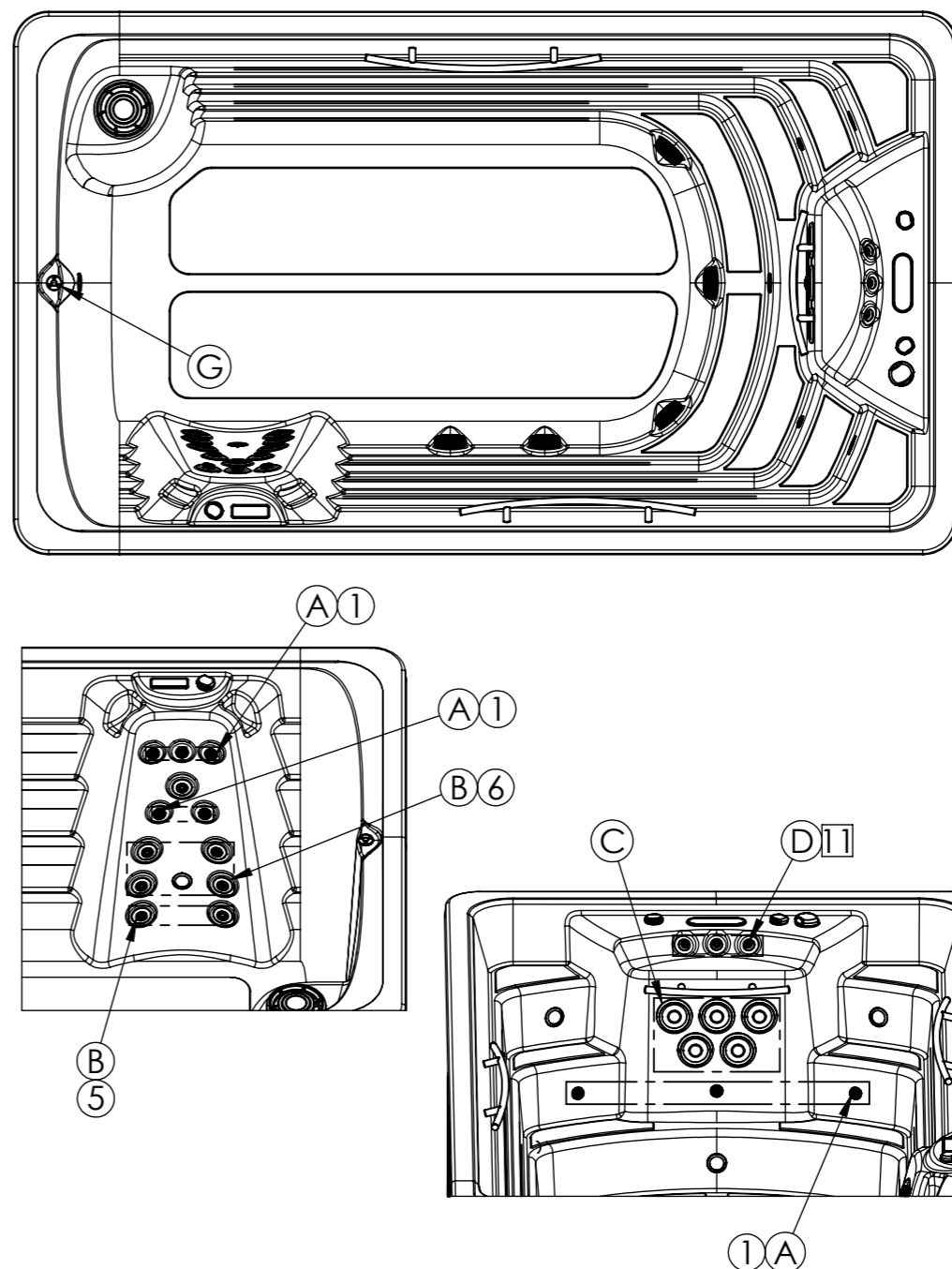
HEATER

- RPOR0358 BOX BP21G1WL
- 07816R1013 HEATER RACORDS (2 UNITS)
- RPOR0101 - TEMPERATURE PROBES GS I GL (x2)
- RPOR0105 - HEATER 3KW GS I GL
- RPOR0358-A - DIGITAL PANEL BP21G1WL
- RPOR0330 - EXPANDER BOARD KIT FOR SYSTEM BP21G1WL
- RPOR0358-B - LEVEL SENSOR

PUMPS

- (x3) MASSAGE PUMP (300) RPOR0279
- UNION NUT+TAIL PIECE PUMP RPOR0256
- FILTRATION PUMP RPOR0244
- UNION NUT+TAILPIECE PUMP RPOR0257

MASSAGE COMPONENTS



- JET BODY SET 2" RPOR0375
- FRONTAL JET 2" SS DIRECTIONAL RPOR0375-A
- FRONTAL JET 2" LF SS DIRECTION RPOR00375-B
- FRONTAL JET 2" SS ROTO RPOR0375-C
- FRONTAL JET 2" LF SS ROTO RPOR0375-D
- JET BODY SET 3" RPOR0376
- FRONTAL JET 3" SS DIRECTIONAL RPOR0376-A
- FRONTAL JET 3" SS TWIN ROTO RPOR0376-B
- SWIM JET STAINLESS STEEL RPOR0282
- FOUNTAIN RPOR0301

FILTRATION

- SKIMMER SWIMSPA RPOR0174
- SWIMSPA FILTER CARTRIDGE RPOR0175

DESINFECTION

- UV DESINFECTION SYSTEM RPOR0266

AUDIO

- Option 4.1
- RECEPTOR AUDIO BLUETOOTH BBA2 RPOR0380
- EXTENSION CABLE RPOR0370
- POWER SUPPLY 220/12V RPOR0295
- SUBWOOFER RPOR0208
- SPEAKER RPOR0320

OTHER COMPONENTS

- SPECIAL HANDGRIP SPA 1000 RPOR0198
- SPECIAL HANDGRIP SPA 600 RPOR0250
- FASTENING SWIMM SET RPOR042
- SUPER HI-FLO SUCTION 2" SS RPOR0381