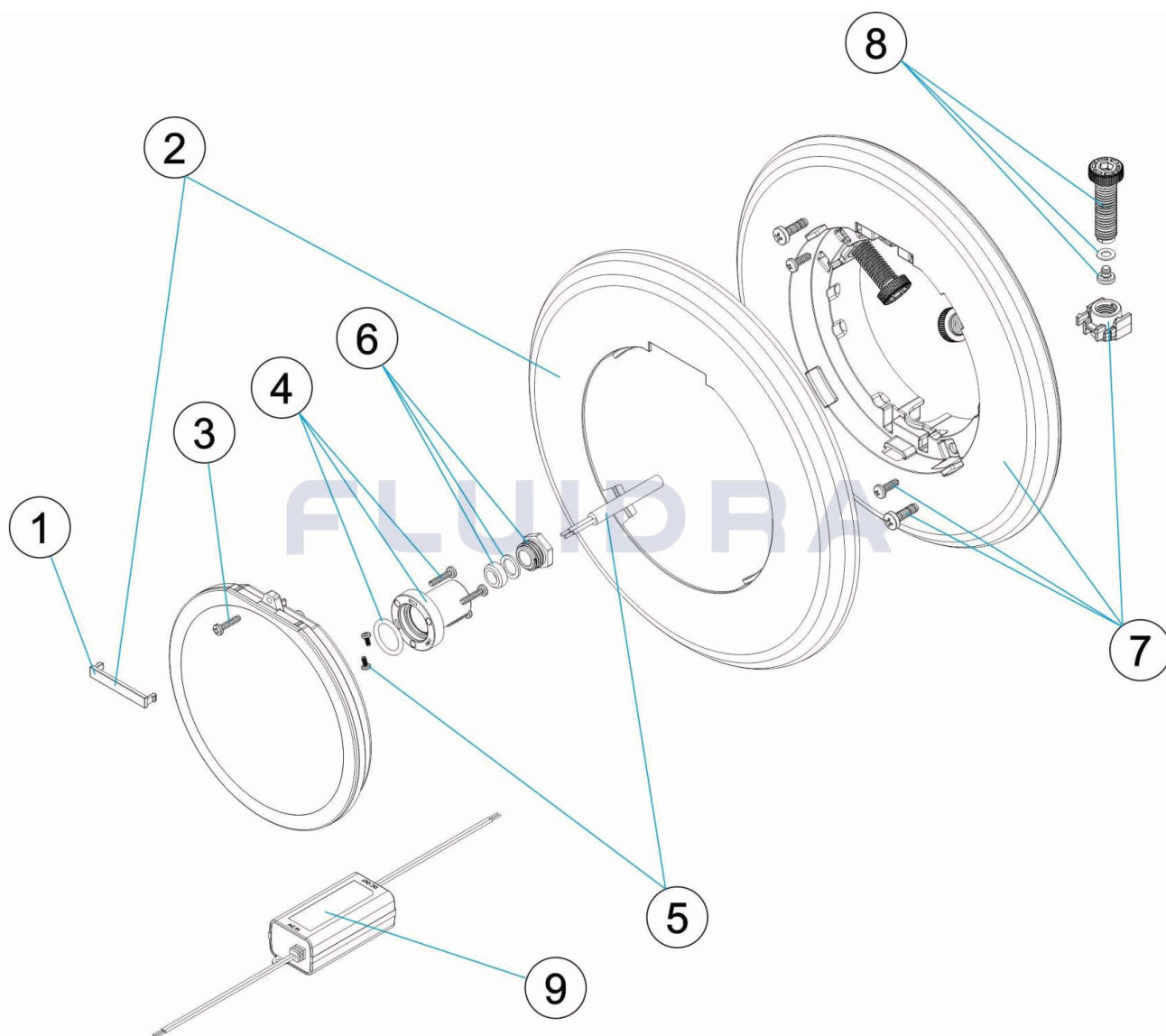


CODIGO **71212, 71213**

 DESCRIPCION: **PUNTO DE LUZ FLEXINICHE**

ESPAÑOL

POS	CODIGO	DESCRIPCION	CANTIDAD	POS	CODIGO	DESCRIPCION	CANTIDAD
1	* 4403010087	TAPETA EMBELLECEDORA PURE WHITE		3	4403010114	TORNILLERIA PROYECTOR	
1	* 4403010119	TAPETA EMBELLECEDORA		4	4403010117	PRENSAESTOPAS VERTICAL	
1	* 4403010120	TAPETA EMBELLECEDORA		5	4403010116	CABLE PROYECTOR	
1	* 4403010121	TAPETA EMBELLECEDORA		6	4403010076	CJTO. TAPON PRENSAESTOPAS	
2	* 4403010122	EMBELLECEDOR FLEXINICHE		7	4403010126	FIJACIÓN FLEXINICHE	
2	* 4403010123	EMBELLECEDOR FLEXINICHE		8	4403010127	TORNILLERIA FIJACION FLEXINICHE	
2	* 4403010124	EMBELLECEDOR FLEXINICHE		9	67511	FUENTE ALIMENTACION APV 16W 24VDC	
2	* 4403010125	EMBELLECEDOR FLEXINICHE					

CODIGO **71212, 71213**

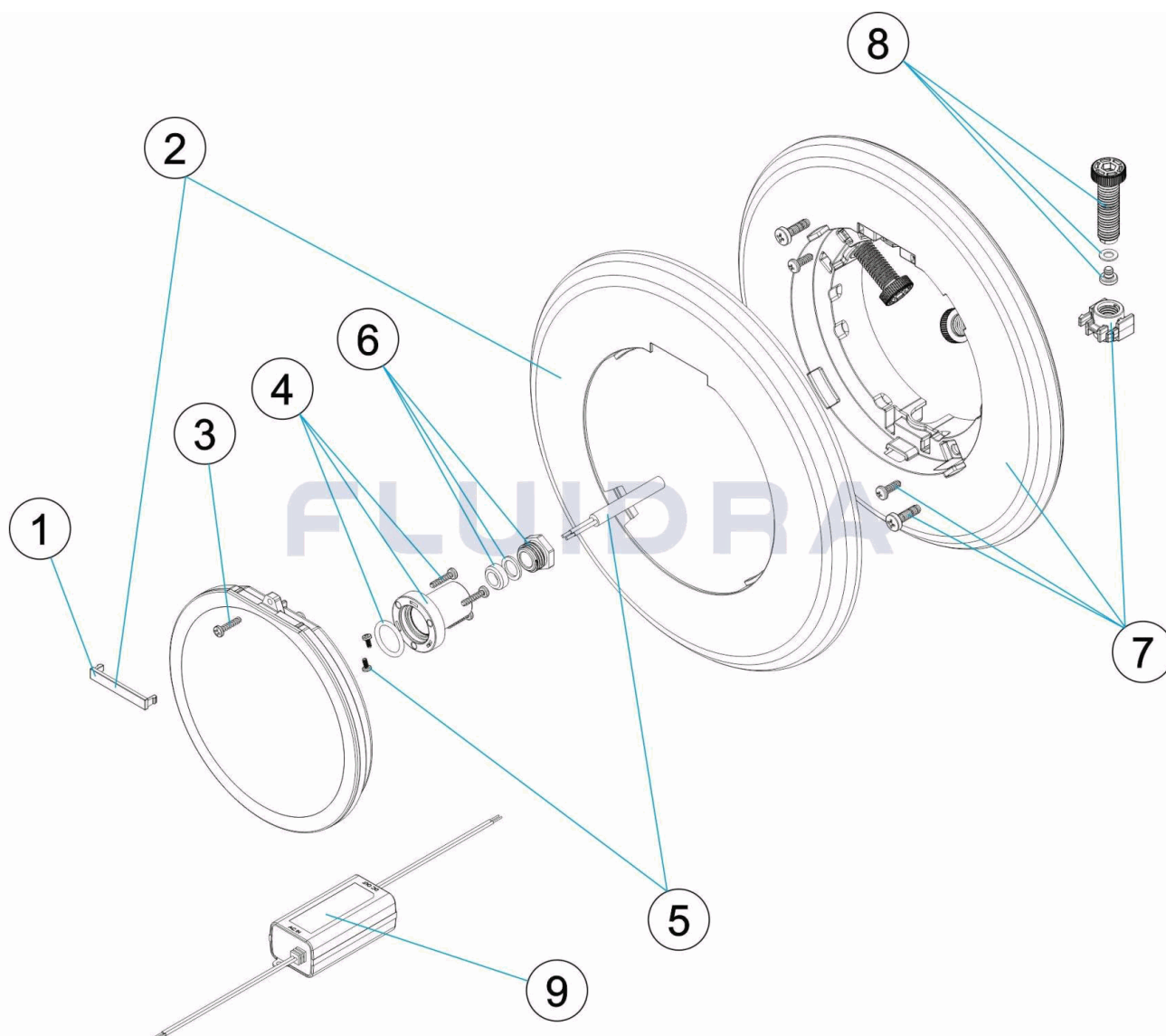
 DESCRIPCION: **PUNTO DE LUZ FLEXINICHE**

OBSERVACIONES

POS	CODIGO	OBSERVACIONES
1	4403010087	PARA: BLANCO / WHITE
1	4403010119	PARA: BEIGE
1	4403010120	PARA: GRIS / GREY
1	4403010121	PARA: ANTRACITA / ANTHRACITE
2	4403010122	PARA: BLANCO / WHITE
2	4403010123	PARA: BEIGE
2	4403010124	PARA: GRIS / GREY
2	4403010125	PARA: ANTRACITA / ANTHRACITE

CODE 71212, 71213

DESCRIPTION: OPTIQUE FLEXINICHE


FRANCAIS

POS	CODE	DESCRIPTION	QUANTITE	POS	CODE	DESCRIPTION	QUANTITE
1	* 4403010087	ENJOLIVEUR PURE WHITE		3	4403010114	VISSERIE PROJECTEUR	
1	* 4403010119	ENJOLIVEUR		4	4403010117	PASSE-CABLES VERTICAL	
1	* 4403010120	ENJOLIVEUR		5	4403010116	CABLE PROJECTEUR	
1	* 4403010121	ENJOLIVEUR		6	4403010076	ENSEMBLE BOUCHON PRESSE-ETOUPE	
2	* 4403010122	ENJOLIVEUR FLEXINICHE		7	4403010126	FIXATION FLEXINICHE	
2	* 4403010123	ENJOLIVEUR FLEXINICHE		8	4403010127	VISSERIE FIXATION FLEXINICHE	
2	* 4403010124	ENJOLIVEUR FLEXINICHE		9	67511	SOURCE D'ALIMENTATION APV 16W 24VD	
2	* 4403010125	ENJOLIVEUR FLEXINICHE					

CODE **71212, 71213**

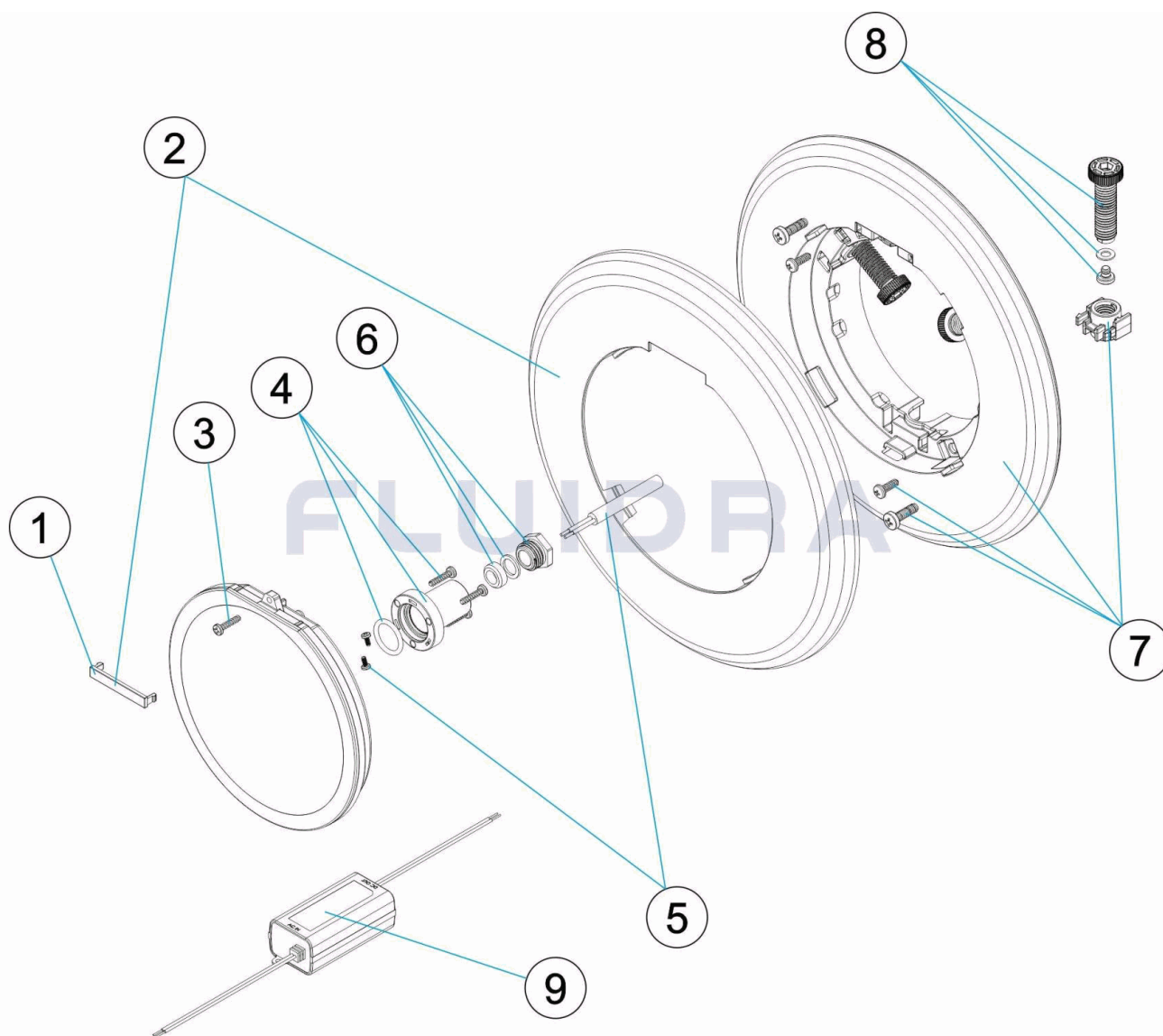
 DESCRIPTION: **OPTIQUE FLEXINICHE**

OBSERVATIONS

POS	CODE	OBSERVATIONS
1	4403010087	POUR: BLANCO / WHITE
1	4403010119	POUR: BEIGE
1	4403010120	POUR: GRIS / GREY
1	4403010121	POUR: ANTRACITA / ANTHRACITE
2	4403010122	POUR: BLANCO / WHITE
2	4403010123	POUR: BEIGE
2	4403010124	POUR: GRIS / GREY
2	4403010125	POUR: ANTRACITA / ANTHRACITE

CODE 71212, 71213

DESCRIPTION: FLEXINICHE SPOTLIGHT


ENGLISH

POS	CODE	DESCRIPTION	QUANTITY	POS	CODE	DESCRIPTION	QUANTITY
1	* 4403010087	ESCUTCHEON PURE WHITE		3	4403010114	LIGHT SCREWS	
1	* 4403010119	ESCUTCHEON		4	4403010117	VERTICAL CABLE GUIDES	
1	* 4403010120	ESCUTCHEON		5	4403010116	LIGHT CABLE	
1	* 4403010121	ESCUTCHEON		6	4403010076	PACKING GLAND ASSEMBLY	
2	* 4403010122	FLEXINICHE FACEPLATE		7	4403010126	FLEXINICHE FIXING	
2	* 4403010123	FLEXINICHE FACEPLATE		8	4403010127	SCREWS FOR FIXING FLEXINICHE	
2	* 4403010124	FLEXINICHE FACEPLATE		9	67511	POWER APV 16W 24VDC	
2	* 4403010125	FLEXINICHE FACEPLATE					

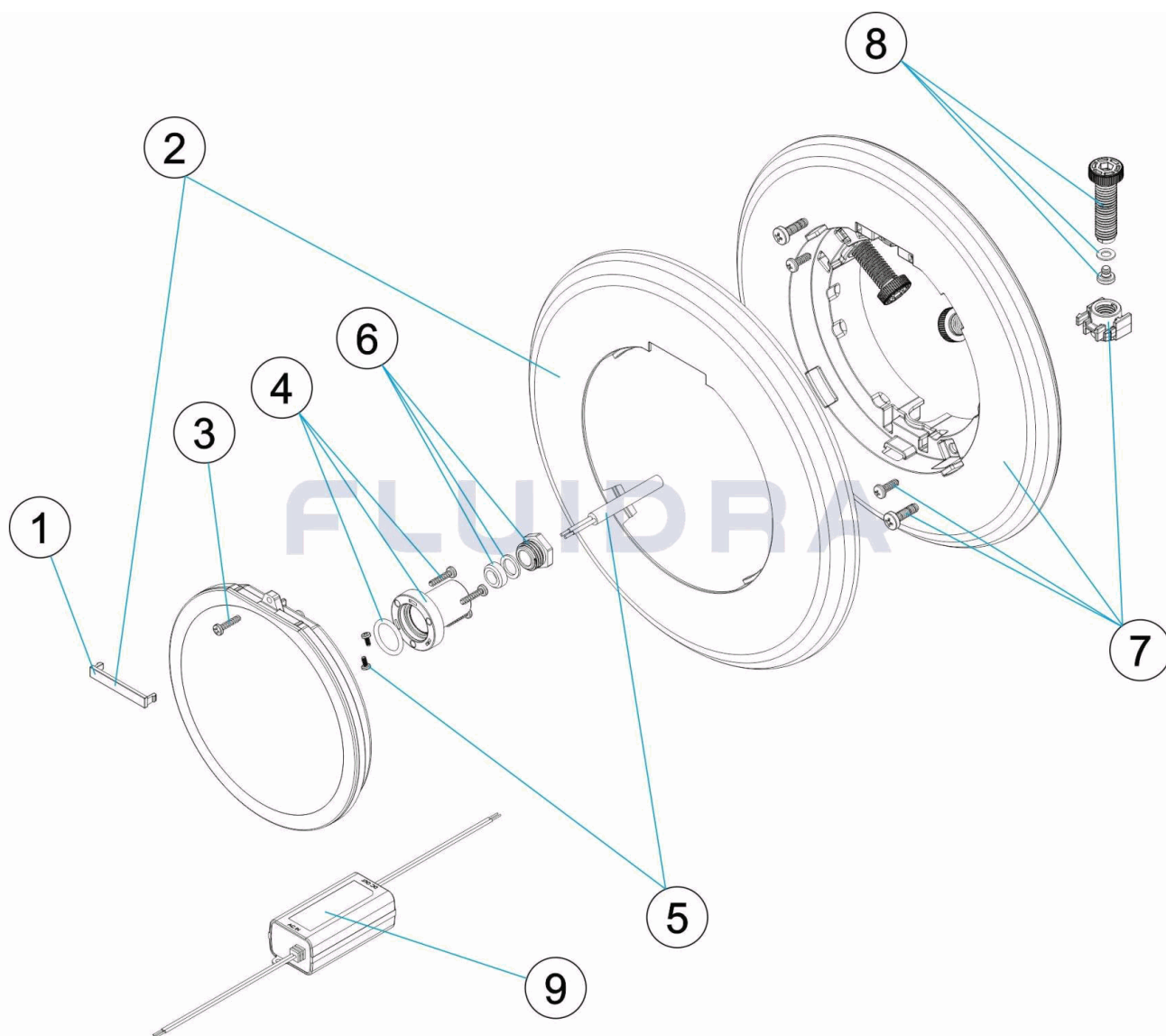
CODE **71212, 71213**

DESCRIPTION: **FLEXINICHE SPOTLIGHT**

OBSERVATIONS

POS	CODE	OBSERVATIONS
1	4403010087	FOR: BLANCO / WHITE
1	4403010119	FOR: BEIGE
1	4403010120	FOR: GRIS / GREY
1	4403010121	FOR: ANTRACITA / ANTHRACITE
2	4403010122	FOR: BLANCO / WHITE
2	4403010123	FOR: BEIGE
2	4403010124	FOR: GRIS / GREY
2	4403010125	FOR: ANTRACITA / ANTHRACITE

CODICE **71212, 71213**

 DESCRIZIONE: **PUNTO DI LUCE FLEXINICHE**

ITALIANO

POS	CODICE	DESCRIZIONE	QUANTITA'	POS	CODICE	DESCRIZIONE	QUANTITA'
1	* 4403010087	COPRIFLANGIA PURE WHITE		3	4403010114	KIT BULLONERIA FARO	
1	* 4403010119	COPRIFLANGIA		4	4403010117	PASSACAVI VERTICALE	
1	* 4403010120	COPRIFLANGIA		5	4403010116	CAVO FARO	
1	* 4403010121	COPRIFLANGIA		6	4403010076	INSIEME TAPPO PREMISTOPPA	
2	* 4403010122	ANELLO FRONTALE FLEXINICHE		7	4403010126	FISSAGGIO FLEXINICHE	
2	* 4403010123	ANELLO FRONTALE FLEXINICHE		8	4403010127	ELEMENTI DI FISSAGGIO FLEXINICHE	
2	* 4403010124	ANELLO FRONTALE FLEXINICHE		9	67511	FORNITORE ALIMENTAZIONE APV 16W 24VDC	
2	* 4403010125	ANELLO FRONTALE FLEXINICHE					

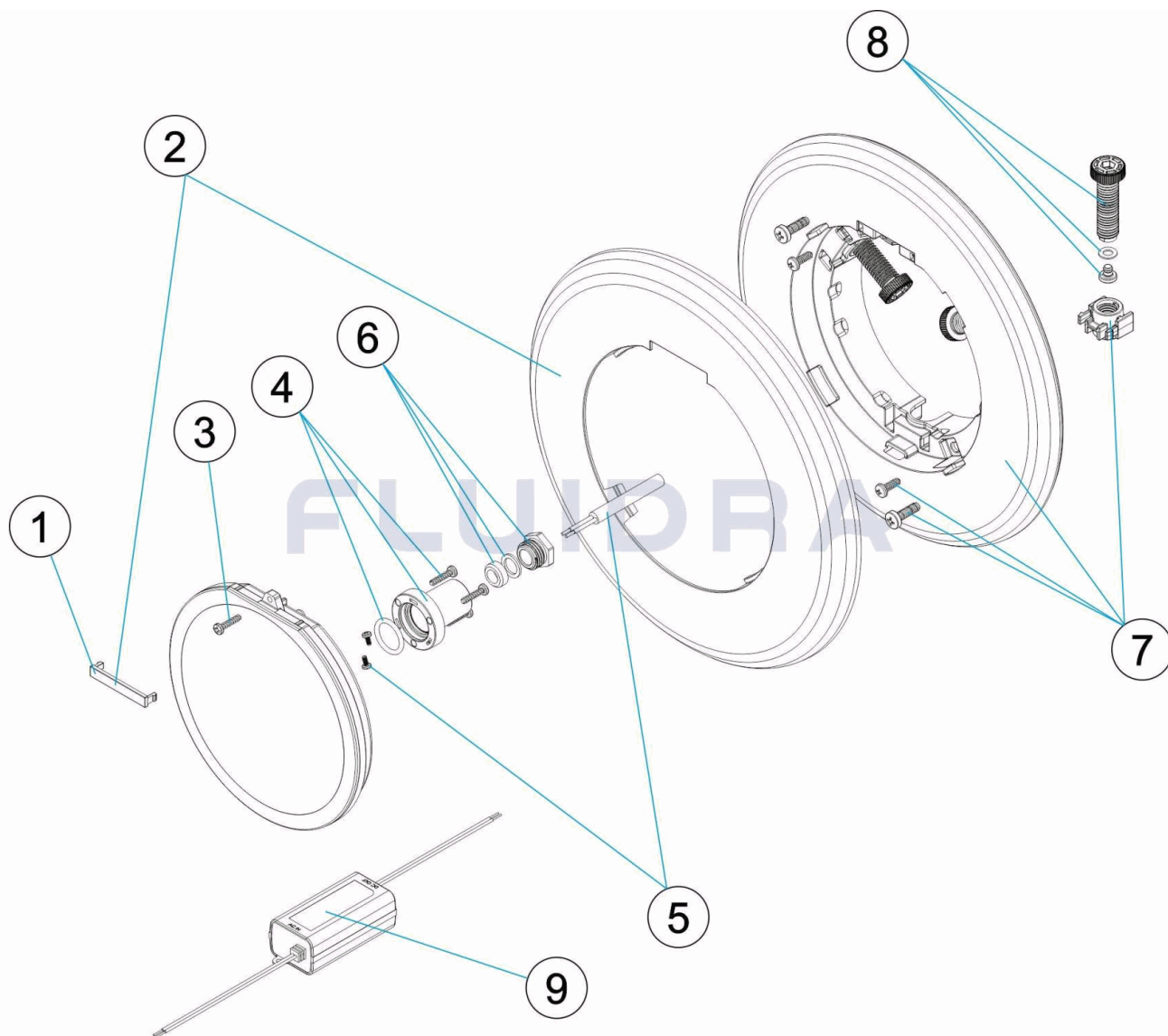
CODICE **71212, 71213**

 DESCRIZIONE: **PUNTO DI LUCE FLEXINICHE**

OSSERVAZIONI

POS	CODICE	OSSERVAZIONI
1	4403010087	PER: BLANCO / WHITE
1	4403010119	PER: BEIGE
1	4403010120	PER: GRIS / GREY
1	4403010121	PER: ANTRACITA / ANTHRACITE
2	4403010122	PER: BLANCO / WHITE
2	4403010123	PER: BEIGE
2	4403010124	PER: GRIS / GREY
2	4403010125	PER: ANTRACITA / ANTHRACITE

CODE **71212, 71213**

 BESCHREIBUNG: **SPOT FLEXINICHE**

DEUTSCH

POS	CODE	BESCHREIBUNG	MENGE	POS	CODE	BESCHREIBUNG	MENGE
1	* 4403010087	DEKO-ABSCHLUSS PURE WHITE		3	4403010114	UWS SCHRAUBENSATZ	
1	* 4403010119	DEKO-ABSCHLUSS		4	4403010117	VERTIKAL QUETSCHVERSCHRAUBUNG	
1	* 4403010120	DEKO-ABSCHLUSS		5	4403010116	UWS-KABEL	
1	* 4403010121	DEKO-ABSCHLUSS		6	4403010076	STOPFENSET QUETSCHVERSCHRAUBUN	
2	* 4403010122	BLLENDE FLEXINICHE		7	4403010126	FIXIE FLEXINICHE	
2	* 4403010123	BLLENDE FLEXINICHE		8	4403010127	FIXIERSCHRAUBEN FLEXINICHE	
2	* 4403010124	BLLENDE FLEXINICHE		9	67511	STROMVERSORGUNG APV 16W 24VDC	
2	* 4403010125	BLLENDE FLEXINICHE					

CODE **71212, 71213**

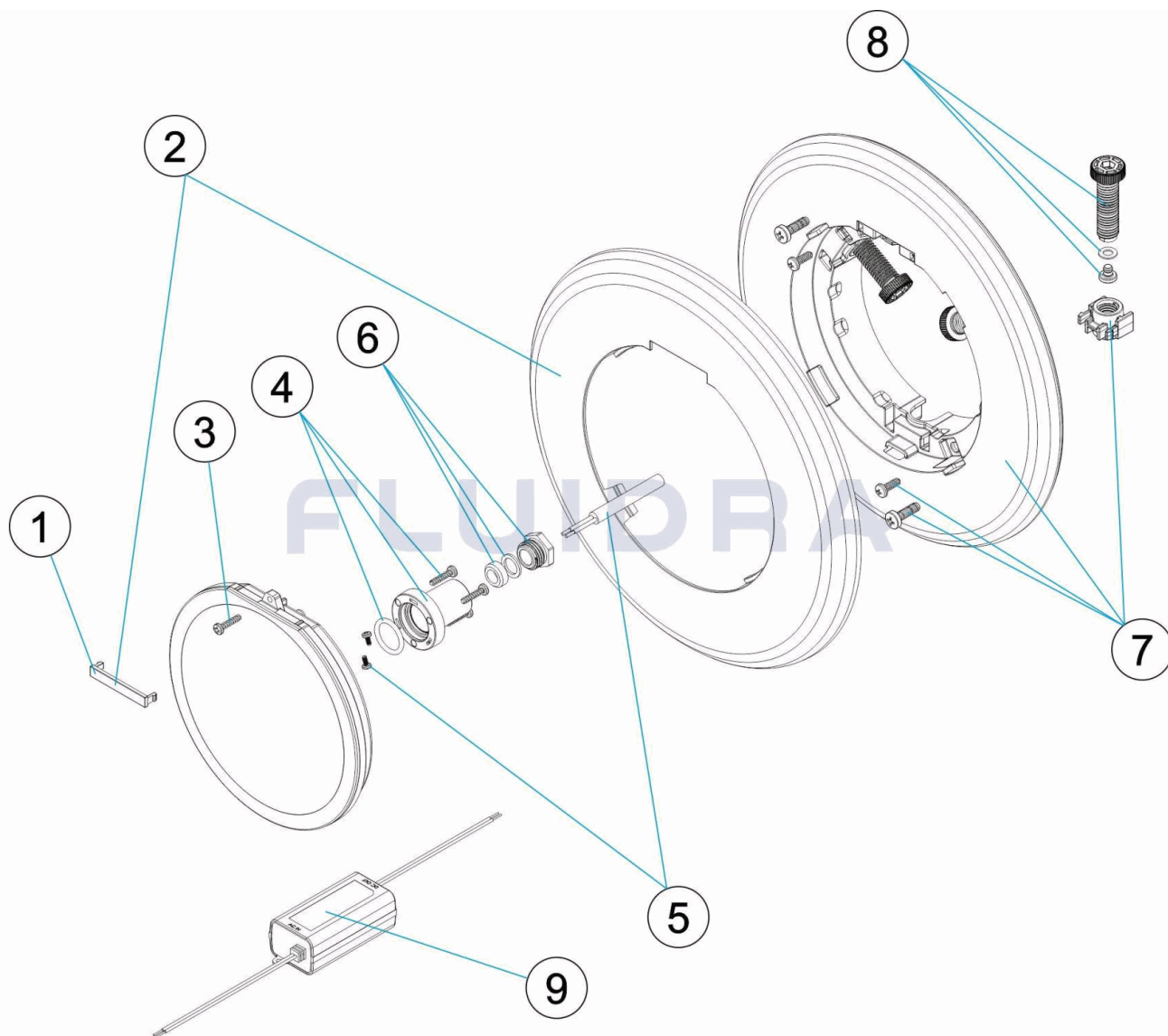
 BESCHREIBUNG: **SPOT FLEXINICHE**

HINWEISE

POS	CODE	HINWEISE
1	4403010087	FÜR: BLANCO / WHITE
1	4403010119	FÜR: BEIGE
1	4403010120	FÜR: GRIS / GREY
1	4403010121	FÜR: ANTRACITA / ANTHRACITE
2	4403010122	FÜR: BLANCO / WHITE
2	4403010123	FÜR: BEIGE
2	4403010124	FÜR: GRIS / GREY
2	4403010125	FÜR: ANTRACITA / ANTHRACITE

CODIGO 71212, 71213

DESCRIÇÃO: PONTO DE LUZ FLEXINICHE


PORTUGUES

POS	CODIGO	DESCRIÇÃO	QUANTIDADE	POS	CODIGO	DESCRIÇÃO	QUANTIDADE
1	* 4403010087	TAMPA EMBELEZADORA PURE WHITE		3	4403010114	CONJ. PARAFUSOS PROJECTOR	
1	* 4403010119	TAMPA EMBELEZADORA		4	4403010117	PASSA-CABOS VERTICAL	
1	* 4403010120	TAMPA EMBELEZADORA		5	4403010116	CABO PROJECTOR	
1	* 4403010121	TAMPA EMBELEZADORA		6	4403010076	CONJUNTO TAMPABUCIM	
2	* 4403010122	EMBELEZADOR FLEXINICHE		7	4403010126	FIXAÇÃO FLEXINICHE	
2	* 4403010123	EMBELEZADOR FLEXINICHE		8	4403010127	PORCAS E PARAFUSOS FIXAÇÃO FLEXINI	
2	* 4403010124	EMBELEZADOR FLEXINICHE		9	67511	FONTE ALIMENTAÇÃO APV 16W 24VDC	
2	* 4403010125	EMBELEZADOR FLEXINICHE					

CODIGO **71212, 71213**

DESCRIÇÃO: **PONTO DE LUZ FLEXINICHE**

OBSERVAÇÕES

POS	CODIGO	OBSERVAÇÕES
1	4403010087	PARA: BLANCO / WHITE
1	4403010119	PARA: BEIGE
1	4403010120	PARA: GRIS / GREY
1	4403010121	PARA: ANTRACITA / ANTHRACITE
2	4403010122	PARA: BLANCO / WHITE
2	4403010123	PARA: BEIGE
2	4403010124	PARA: GRIS / GREY
2	4403010125	PARA: ANTRACITA / ANTHRACITE