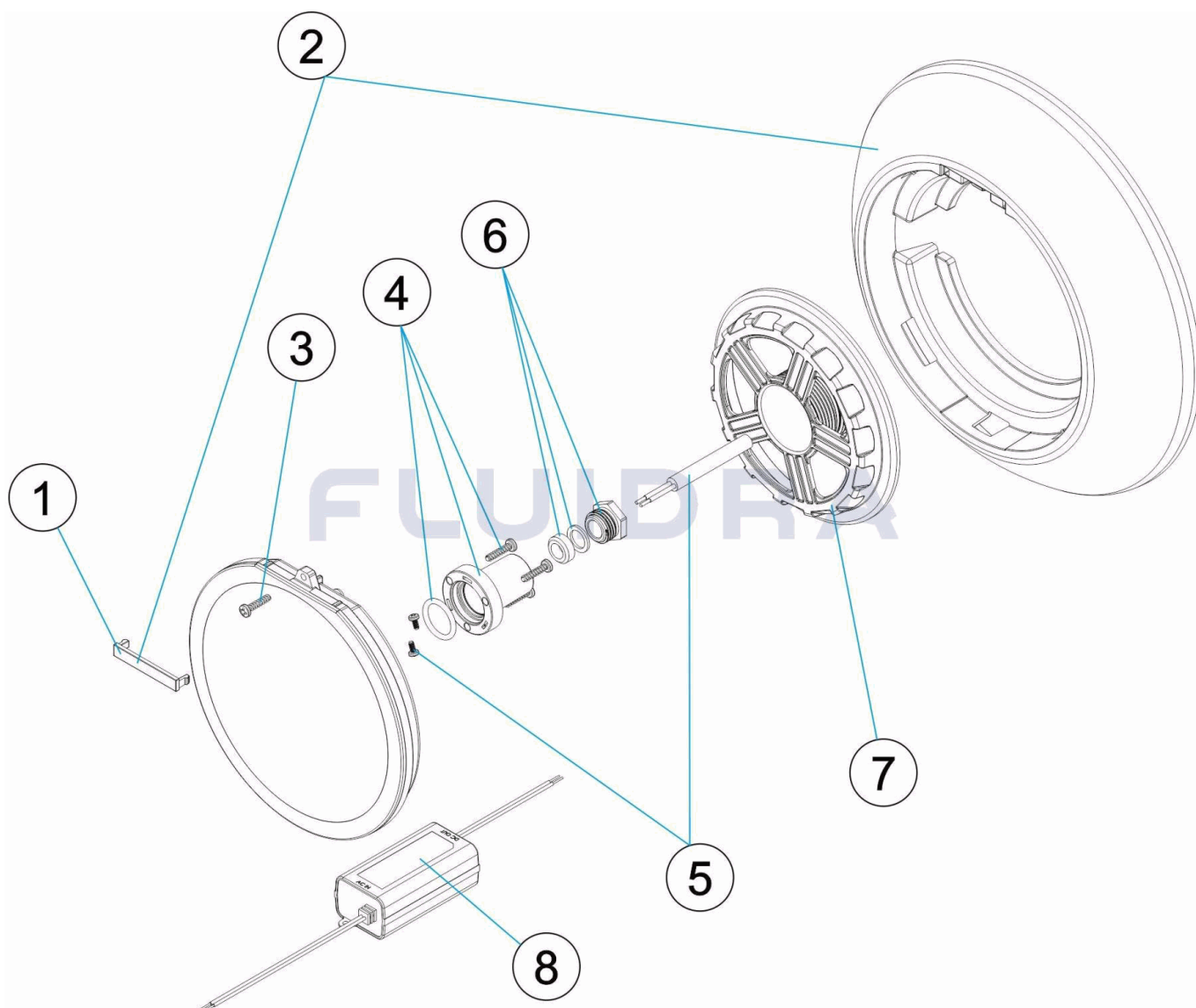


CODIGO 71216, 71217

DESCRIPCION: PUNTO DE LUZ FLEXIRAPID


ESPAÑOL

POS	CODIGO	DESCRIPCION	CANTIDAD	POS	CODIGO	DESCRIPCION	CANTIDAD
1	* 4403010087	TAPETA EMBELLECEDORA PURE WHITE		2	* 4403010132	EMBELLECEDOR FLEXIRAPID	
1	* 4403010119	TAPETA EMBELLECEDORA		3	4403010114	TORNILLERIA PROYECTOR	
1	* 4403010120	TAPETA EMBELLECEDORA		4	4403010117	PRENSAESTOPAS VERTICAL	
1	* 4403010121	TAPETA EMBELLECEDORA		5	4403010116	CABLE PROYECTOR	
2	* 4403010129	EMBELLECEDOR FLEXIRAPID		6	4403010076	CJTO. TAPON PRENSAESTOPAS	
2	* 4403010130	EMBELLECEDOR FLEXIRAPID		7	4403010128	ADAPTADOR FIJACION BOQUILLA	
2	* 4403010131	EMBELLECEDOR FLEXIRAPID		8	* 67511	FUENTE ALIMENTACION APV 16W 24VDC	

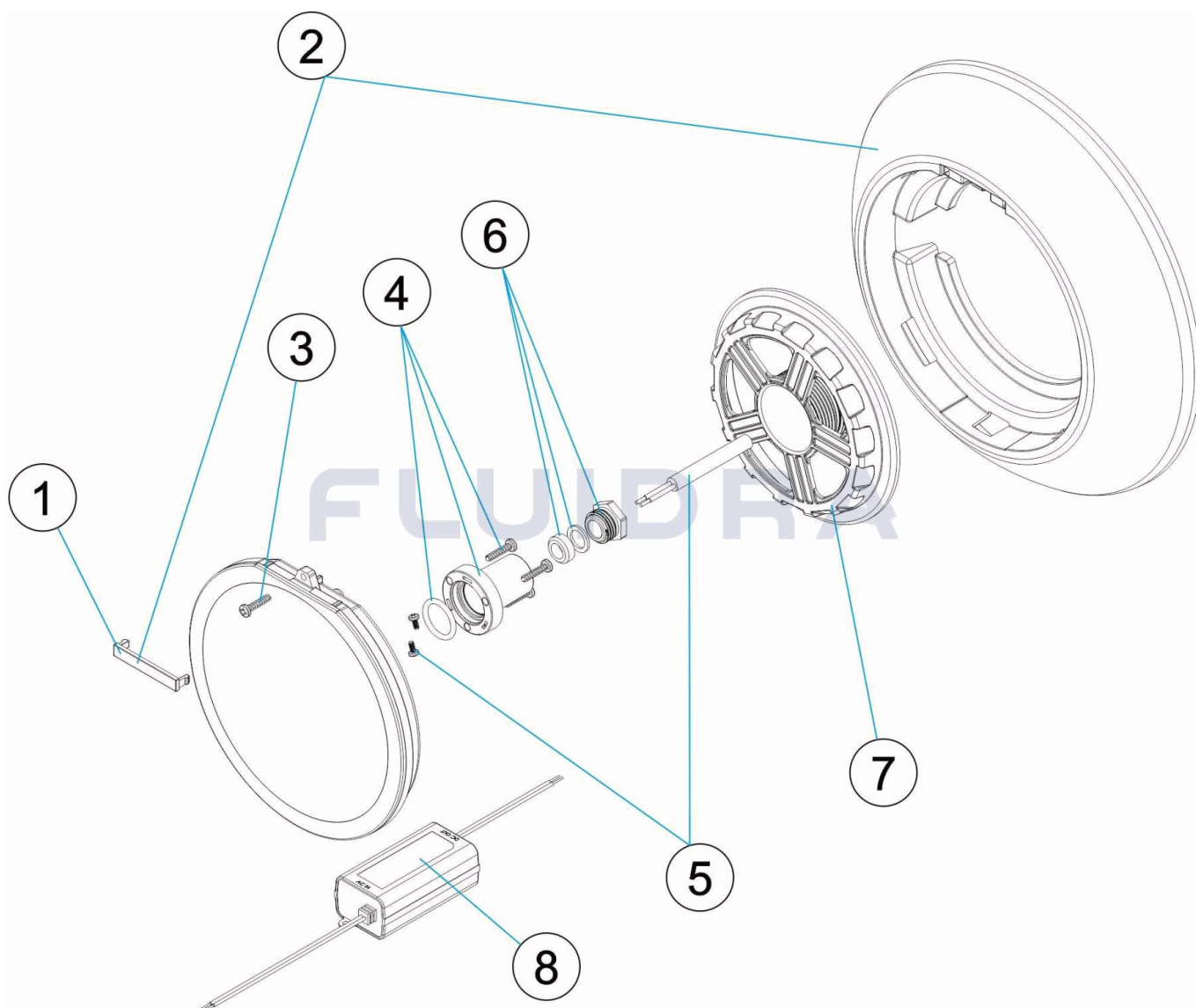
CODIGO **71216, 71217**

DESCRIPCION: **PUNTO DE LUZ FLEXIRAPID**

OBSERVACIONES

POS	CODIGO	OBSERVACIONES
1	4403010087	PARA: BLANCO / WHITE
1	4403010119	PARA: BEIGE
1	4403010120	PARA: GRIS / GREY
1	4403010121	PARA: ANTRACITA / ANTHRACITE
2	4403010129	PARA: BLANCO / WHITE
2	4403010130	PARA: BEIGE
2	4403010131	PARA: GRIS / GREY
2	4403010132	PARA: ANTRACITA / ANTHRACITE
8	67511	PARA: 71217

CODE **71216, 71217**

 DESCRIPTION: **OPTIQUE FLEXIRAPID**

FRANCAIS

POS	CODE	DESCRIPTION	QUANTITE	POS	CODE	DESCRIPTION	QUANTITE
1	* 4403010087	ENJOLIVEUR PURE WHITE		2	* 4403010132	ENJOLIVEUR FLEXIRAPID	
1	* 4403010119	ENJOLIVEUR		3	4403010114	VISSERIE PROJECTEUR	
1	* 4403010120	ENJOLIVEUR		4	4403010117	PASSE-CABLES VERTICAL	
1	* 4403010121	ENJOLIVEUR		5	4403010116	CABLE PROJECTEUR	
2	* 4403010129	ENJOLIVEUR FLEXIRAPID		6	4403010076	ENSEMBLE BOUCHON PRESSE-ETOUPE	
2	* 4403010130	ENJOLIVEUR FLEXIRAPID		7	4403010128	ADAPTATEUR FIXATION BOUCHE	
2	* 4403010131	ENJOLIVEUR FLEXIRAPID		8	* 67511	SOURCE D'ALIMENTATION APV 16W 24VD	

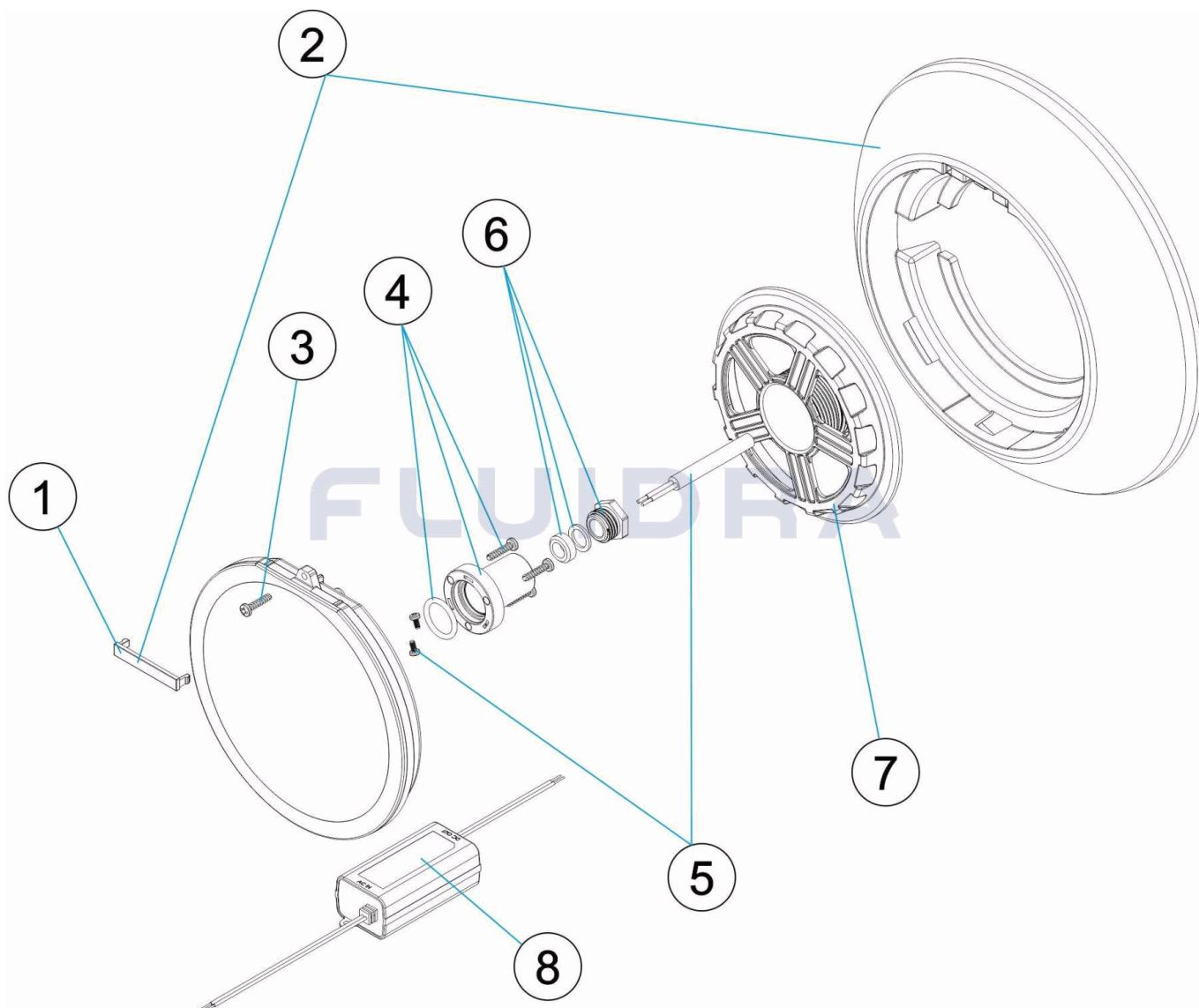
CODE **71216, 71217**

 DESCRIPTION: **OPTIQUE FLEXIRAPID**

OBSERVATIONS

POS	CODE	OBSERVATIONS
1	4403010087	POUR: BLANCO / WHITE
1	4403010119	POUR: BEIGE
1	4403010120	POUR: GRIS / GREY
1	4403010121	POUR: ANTRACITA / ANTHRACITE
2	4403010129	POUR: BLANCO / WHITE
2	4403010130	POUR: BEIGE
2	4403010131	POUR: GRIS / GREY
2	4403010132	POUR: ANTRACITA / ANTHRACITE
8	67511	POUR: 71217

CODE **71216, 71217**

 DESCRIPTION: **FLEXIRAPID SPOTLIGHT**

ENGLISH

POS	CODE	DESCRIPTION	QUANTITY	POS	CODE	DESCRIPTION	QUANTITY
1	* 4403010087	ESCUTCHEON PURE WHITE		2	* 4403010132	FLEXIRAPID FACEPLATE	
1	* 4403010119	ESCUTCHEON		3	4403010114	LIGHT SCREWS	
1	* 4403010120	ESCUTCHEON		4	4403010117	VERTICAL CABLE GUIDES	
1	* 4403010121	ESCUTCHEON		5	4403010116	LIGHT CABLE	
2	* 4403010129	FLEXIRAPID FACEPLATE		6	4403010076	PACKING GLAND ASSEMBLY	
2	* 4403010130	FLEXIRAPID FACEPLATE		7	4403010128	INLET FIXING ADAPTOR	
2	* 4403010131	FLEXIRAPID FACEPLATE		8	* 67511	POWER APV 16W 24VDC	

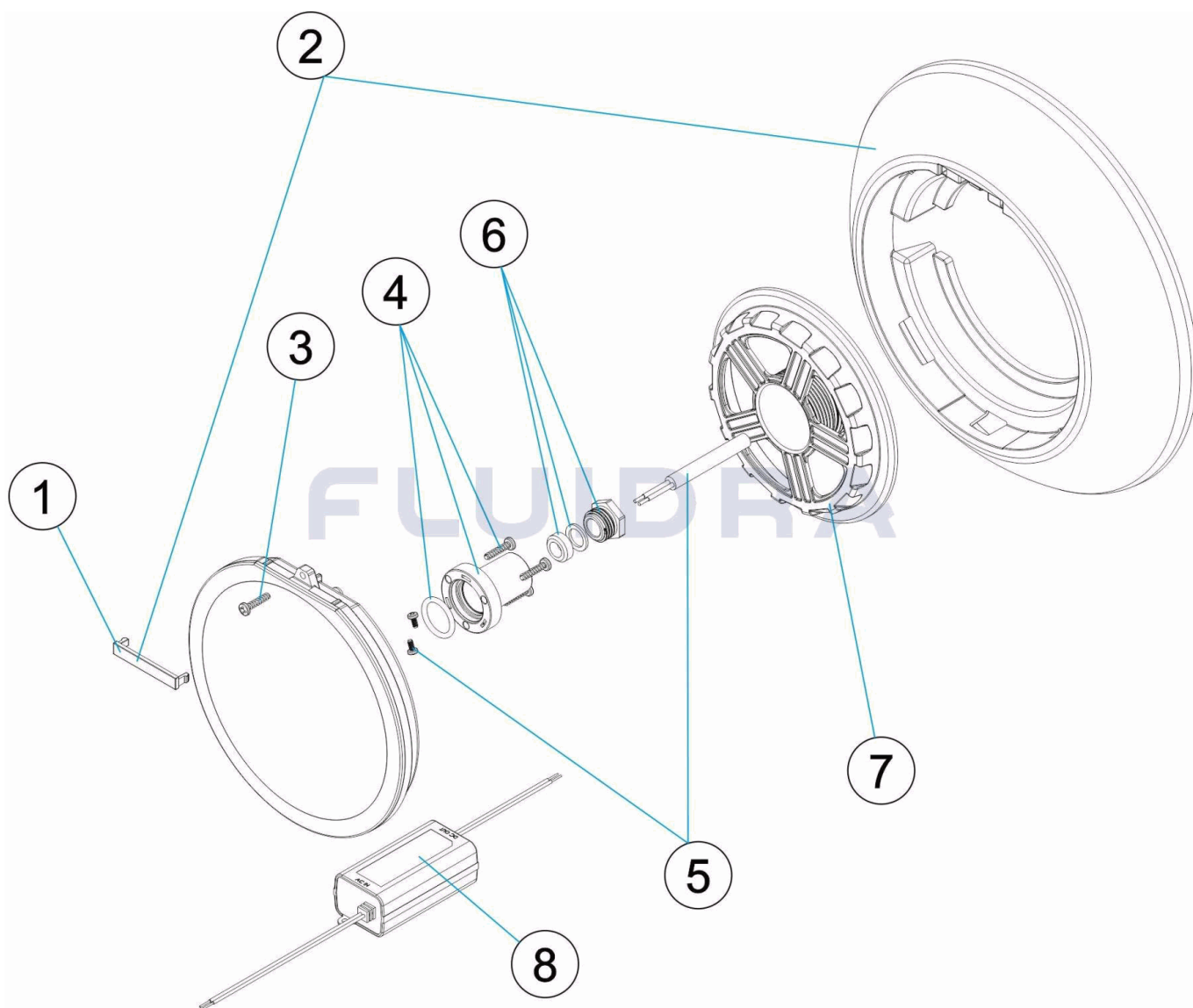
CODE **71216, 71217**

DESCRIPTION: **FLEXIRAPID SPOTLIGHT**

OBSERVATIONS

POS	CODE	OBSERVATIONS
1	4403010087	FOR: BLANCO / WHITE
1	4403010119	FOR: BEIGE
1	4403010120	FOR: GRIS / GREY
1	4403010121	FOR: ANTRACITA / ANTHRACITE
2	4403010129	FOR: BLANCO / WHITE
2	4403010130	FOR: BEIGE
2	4403010131	FOR: GRIS / GREY
2	4403010132	FOR: ANTRACITA / ANTHRACITE
8	67511	FOR: 71217

CODICE **71216, 71217**

 DESCRIZIONE: **PUNTO DI LUCE FLEXIRAPID**

ITALIANO

POS	CODICE	DESCRIZIONE	QUANTITA'	POS	CODICE	DESCRIZIONE	QUANTITA'
1	* 4403010087	COPRIFLANGIA PURE WHITE		2	* 4403010132	ANELLO FRONTALE FLEXIRAPID	
1	* 4403010119	COPRIFLANGIA		3	4403010114	KIT BULLONERIA FARO	
1	* 4403010120	COPRIFLANGIA		4	4403010117	PASSACAVI VERTICALE	
1	* 4403010121	COPRIFLANGIA		5	4403010116	CAVO FARO	
2	* 4403010129	ANELLO FRONTALE FLEXIRAPID		6	4403010076	INSIEME TAPPO PREMISTOPPA	
2	* 4403010130	ANELLO FRONTALE FLEXIRAPID		7	4403010128	ADATTATORE FISSAGGIO BOCCHETTA	
2	* 4403010131	ANELLO FRONTALE FLEXIRAPID		8	* 67511	FONTE ALIMENTAZIONE APV 16W 24VDC	

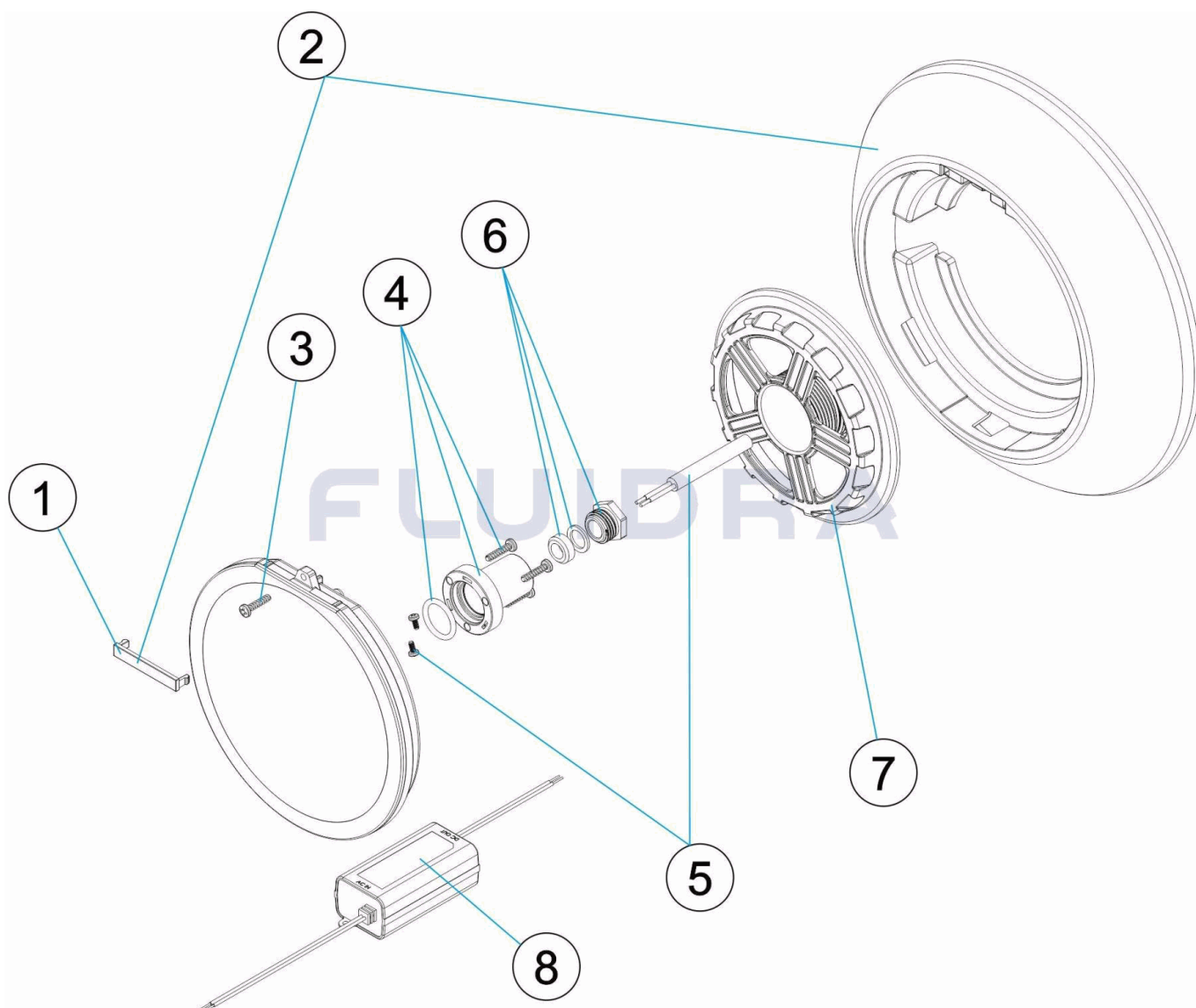
CODICE **71216, 71217**

 DESCRIZIONE: **PUNTO DI LUCE FLEXIRAPID**

OSSERVAZIONI

POS	CODICE	OSSERVAZIONI
1	4403010087	PER: BLANCO / WHITE
1	4403010119	PER: BEIGE
1	4403010120	PER: GRIS / GREY
1	4403010121	PER: ANTRACITA / ANTHRACITE
2	4403010129	PER: BLANCO / WHITE
2	4403010130	PER: BEIGE
2	4403010131	PER: GRIS / GREY
2	4403010132	PER: ANTRACITA / ANTHRACITE
8	67511	PER: 71217

CODE **71216, 71217**

 BESCHREIBUNG: **SPOT FLEXIRAPID**

DEUTSCH

POS	CODE	BESCHREIBUNG	MENGE	POS	CODE	BESCHREIBUNG	MENGE
1	* 4403010087	DEKO-ABSCHLUSS PURE WHITE		2	* 4403010132	LENDE FLEXIRAPID	
1	* 4403010119	DEKO-ABSCHLUSS		3	4403010114	UWS SCHRAUBENSATZ	
1	* 4403010120	DEKO-ABSCHLUSS		4	4403010117	VERTIKAL QUETSCHVERSCHRAUBUNG	
1	* 4403010121	DEKO-ABSCHLUSS		5	4403010116	UWS-KABEL	
2	* 4403010129	LENDE FLEXIRAPID		6	4403010076	STOPFENSET QUETSCHVERSCHRAUBUNG	
2	* 4403010130	LENDE FLEXIRAPID		7	4403010128	DÜSE FIXIE ADAPTER	
2	* 4403010131	LENDE FLEXIRAPID		8	* 67511	STROMVERSORGUNG APV 16W 24VDC	

CODE **71216, 71217**

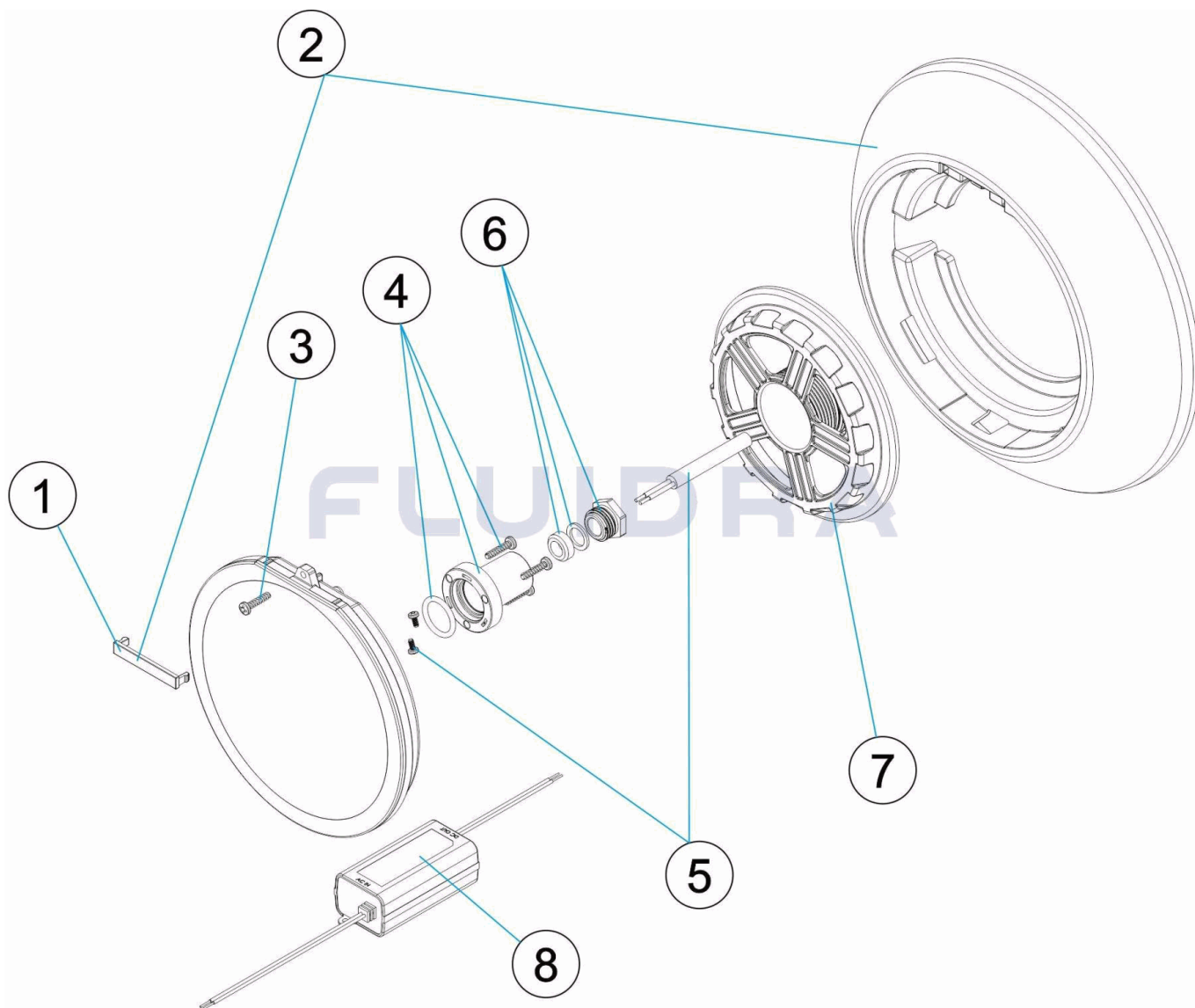
BESCHREIBUNG: **SPOT FLEXIRAPID**

HINWEISE

POS	CODE	HINWEISE
1	4403010087	FÜR: BLANCO / WHITE
1	4403010119	FÜR: BEIGE
1	4403010120	FÜR: GRIS / GREY
1	4403010121	FÜR: ANTRACITA / ANTHRACITE
2	4403010129	FÜR: BLANCO / WHITE
2	4403010130	FÜR: BEIGE
2	4403010131	FÜR: GRIS / GREY
2	4403010132	FÜR: ANTRACITA / ANTHRACITE
8	67511	FÜR: 71217

CODIGO 71216, 71217

DESCRIÇÃO: PONTO DE LUZ FLEXIRAPID


PORTUGUES

POS	CODIGO	DESCRIÇÃO	QUANTIDADE	POS	CODIGO	DESCRIÇÃO	QUANTIDADE
1	* 4403010087	TAMPA EMBELEZADORA PURE WHITE		2	* 4403010132	EMBELEZADOR FLEXIRAPID	
1	* 4403010119	TAMPA EMBELEZADORA		3	4403010114	CONJ. PARAFUSOS PROJECTOR	
1	* 4403010120	TAMPA EMBELEZADORA		4	4403010117	PASSA-CABOS VERTICAL	
1	* 4403010121	TAMPA EMBELEZADORA		5	4403010116	CABO PROJECTOR	
2	* 4403010129	EMBELEZADOR FLEXIRAPID		6	4403010076	CONJUNTO TAMPABUCIM	
2	* 4403010130	EMBELEZADOR FLEXIRAPID		7	4403010128	ADAPTADOR FIXAÇÃO BOCA	
2	* 4403010131	EMBELEZADOR FLEXIRAPID		8	* 67511	FONTE ALIMENTAÇÃO APV 16W 24VDC	

CODIGO **71216, 71217**

DESCRIÇÃO: **PONTO DE LUZ FLEXIRAPID**

OBSERVACÕES

POS	CODIGO	OBSERVACÕES
1	4403010087	PARA: BLANCO / WHITE
1	4403010119	PARA: BEIGE
1	4403010120	PARA: GRIS / GREY
1	4403010121	PARA: ANTRACITA / ANTHRACITE
2	4403010129	PARA: BLANCO / WHITE
2	4403010130	PARA: BEIGE
2	4403010131	PARA: GRIS / GREY
2	4403010132	PARA: ANTRACITA / ANTHRACITE
8	67511	PARA: 71217