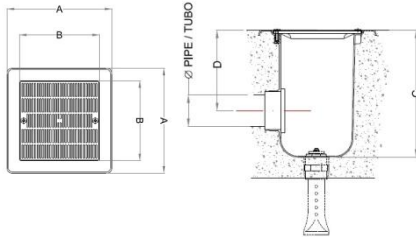
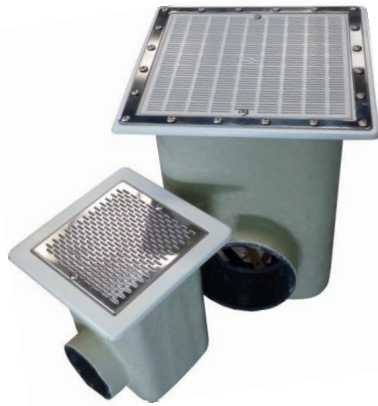


MAIN DRAIN TO EN-13451-1/3:2011 FOR A LINE AND CONCRETED SWIMMING POOL



FEATURES

- ✓ Manufactured from polyester resin and fiber glass.
- ✓ Finished in excellent quality GEL-COAT ISO NPG.
- ✓ 316 Stainless Steel grill suitable for sea water (for a line pool frame is included) or Plastic grill (minimum depth=1,5m) are available.
- ✓ Designed according to the European standard **EN-13451-1/3:2011**.
- ✓ It will be supplied of outlets to glue tube of 75, 90, 110, 125, 140, 160 and 200mm.

OPTIONAL

- ✓ Hydrostatic valve to prevent overpressure due to phreatic water in the bottom of the pool.
- ✓ Antivortex Cover for systems with a single drain (we recommended using main drains with plastic grill).

CARACTERÍSTICAS

- ✓ Fabricados con resina de poliéster y fibra de vidrio.
- ✓ Acabado de excelente calidad en GEL-COAT ISO NPG.
- ✓ Disponibilidad de rejilla de acero inoxidable 316 adecuada para agua marina (para piscina con liner se incluye marco) o rejilla de plástico (mínima profundidad de instalación=1,5m).
- ✓ Diseñado siguiendo la norma europea **EN-13451-1/3:2011**.
- ✓ Será suministrado con salidas para encolar tubo de 75, 90, 110, 125, 140, 160 y 200mm.

OPCIONAL

- ✓ Válvula hidrostática para prevenir de la sobrepresión debida a las aguas freáticas en el fondo de la piscina.
- ✓ Cubierta anti vórtice para sistemas con drenaje sencillo (recomendamos el uso de drenajes principales con rejilla de plástico).

TECHNICAL DATA OF MAIN DRAIN 355X355

Code for a concrete pool	Code for a liner pool	Grill	Connections (mm)	Flow (m ³ /h)	Net weight (kg)	A concrete pool (mm)	A liner pool (mm)	B (mm)	C (mm)	D (mm)
20282N	20074N	Stainless steel	75	15	8	330	355	252	400	280
20283N	20075N	Stainless steel	90	23	9					
20284N	20290N	Stainless steel	110	27	10					
22359N	22416N	Plastic	75	15	8					
22360N	22417N	Plastic	90	23	9					
22361N	22418N	Plastic	110	28	10					
22362N	22419N	Plastic	125	37	11					

*MAX. FLOW RECOMENDED IN PLASTIC GRILL 37 m³/h (0.5 m/s)

*MAX. FLOW RECOMENDED IN STAINLESS STEEL GRILL 27 m³/h (0.5 m/s)

TECHNICAL DATA OF MAIN DRAIN 515X515

Code for a concrete pool	Code for a liner pool	Grill	Connections (mm)	Flow (m ³ /h)	Net weight (kg)	A concrete pool (mm)	A liner pool (mm)	B (mm)	C (mm)	D (mm)
20285N	20076N	Stainless steel	110	35	16	512	515	412	585	390
20286N	20077N	Stainless steel	125	47	17					
20287N	20078N	Stainless steel	140	55	18					
20288N	20079N	Stainless steel	160	79.5	19					
20289N	20291N	Stainless steel	200	85	20					
28709N	28722N	Plastic	110	35	16					
28710N	28723N	Plastic	125	47	17					
28711N	28724N	Plastic	140	55	18					
28712N	28725N	Plastic	160	79.5	19					
28713N	28726N	Plastic	200	114	20					

*MAX. F58LOW RECOMENDED IN PLASTIC GRILL 114 m³/h (0.5 m/s)

*MAX. FLOW RECOMENDED IN STAINLESS STEEL GRILL 86 m³/h (0.5 m/s)