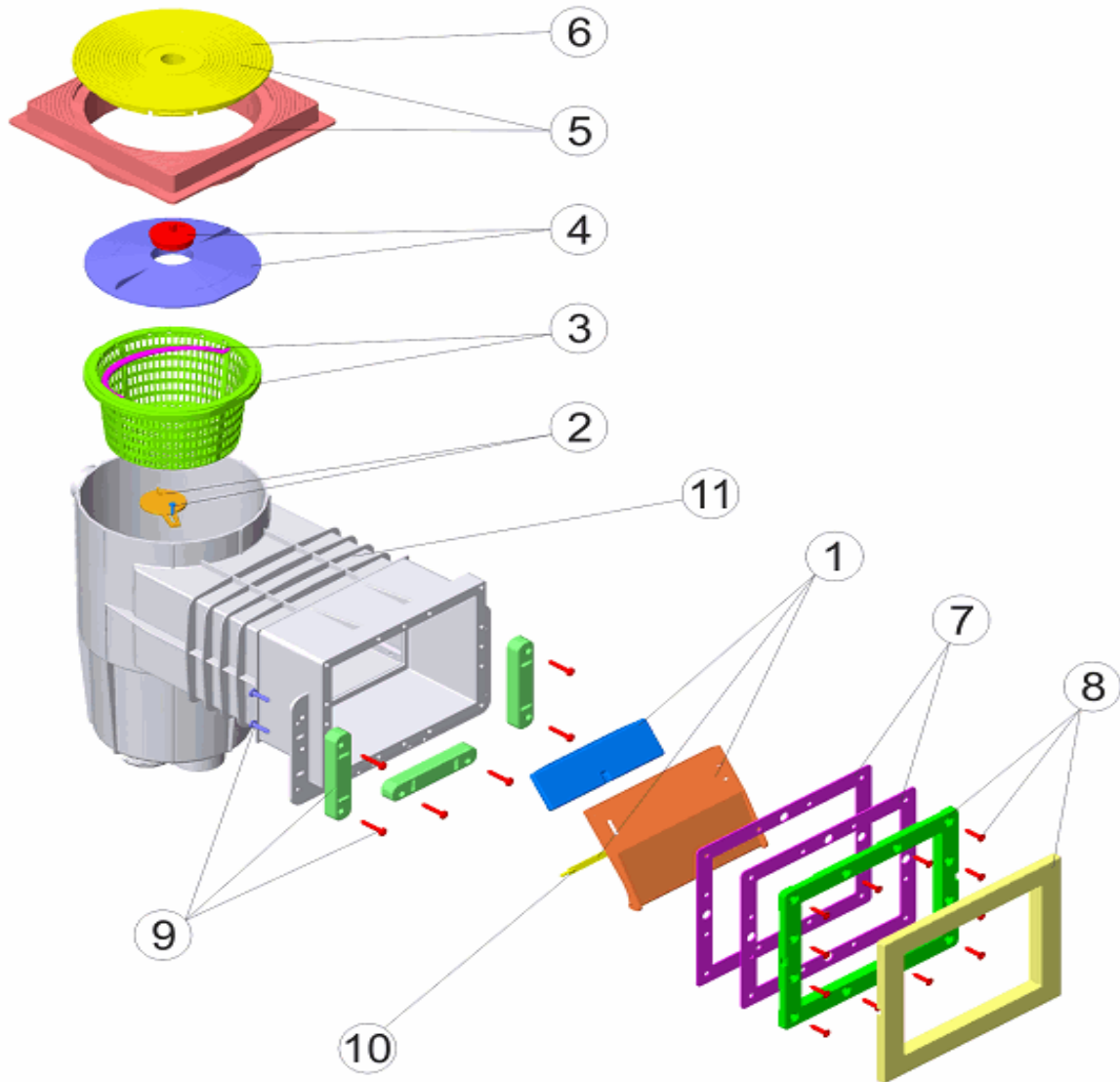


CODE **32379**

BESCHREIBUNG: **SKIMMER 15L PANEL-SCHWIMMBECKEN MÜNDUNG BREIT  
 DECKEL QUADRATISCH**

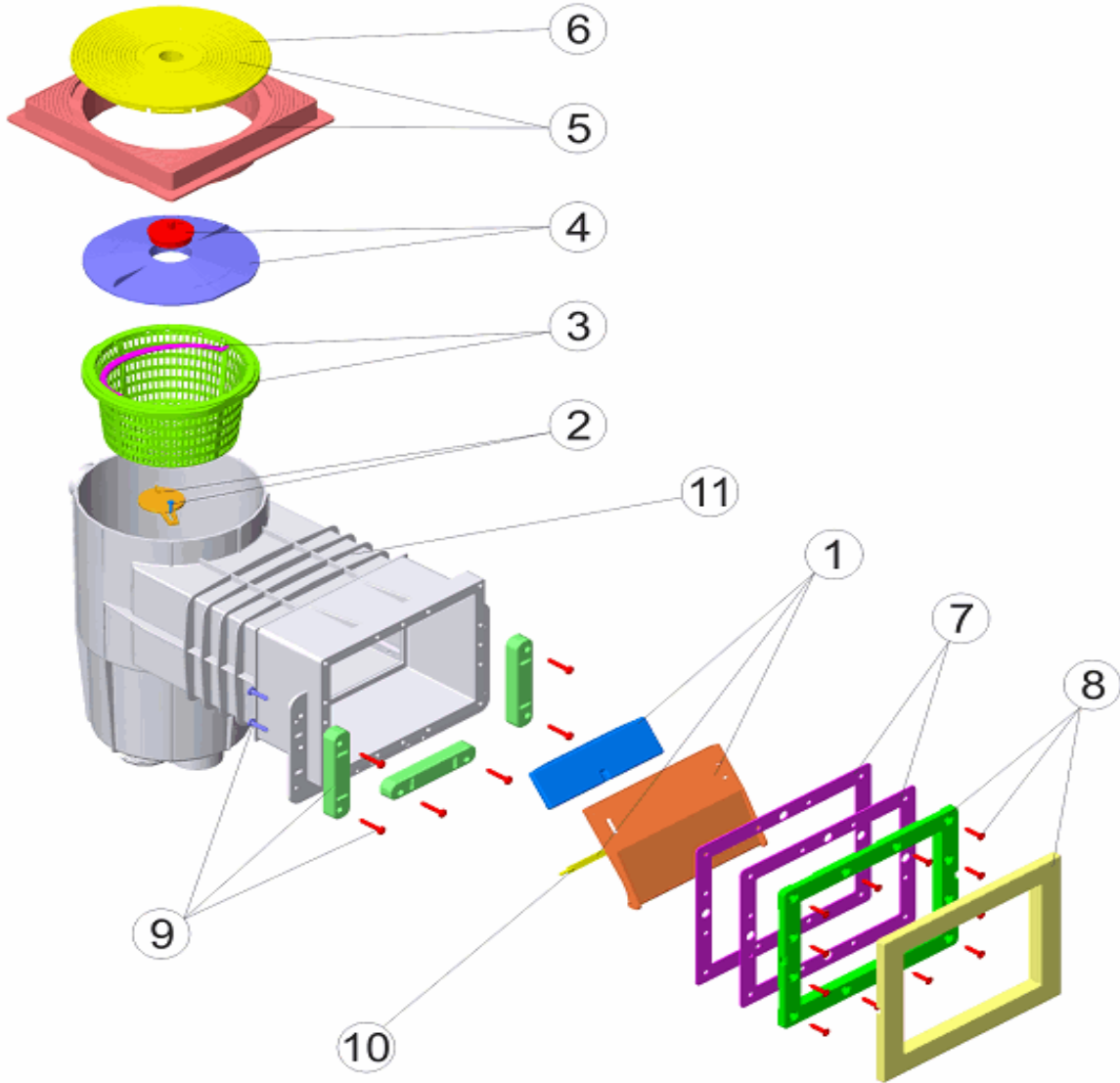


**DEUTSCHE**

| POS | CODE       | BESCHREIBUNG                  | POS | CODE       | BESCHREIBUNG                           |
|-----|------------|-------------------------------|-----|------------|--|
| 1   | 4402010101 | SKIMMERKLAPPE                 | 7   | 4402011711 | DICHTUNG FÜR SKIMMER P.P.              |
| 2   | 4402010102 | ABDECKKAPPE                   | 8   | 4402011712 | FLANSCHSATZ                            |
| 3   | 4402010103 | SKIMMERKORB                   | 9   | 4402011613 | DICKE ZWISCHENTEILE FÜR SKIMMERÖFFNUNG |
| 4   | 4402010104 | SAUGANSCHLUSSPLATTE + STOPFEN | 10  | 4402010110 | ACHSE SKIMMERKLAPPE                    |
| 5   | 4402010106 | SKIMMERDECKELSATZ QUADRATISCH | 11  | 00249R0011 | SKIMMERKÖRPER                          |
| 6   | 4402010108 | SKIMMERDECKEL RUND            | 12  | 28884R0001 | BREITE ÖFFNUNG FÜR PANELE              |

CODE **32379**

DESCRIPTION: **SKIMMER 15L PANEL POOL WIDE MOUTH SQUARE COVER**

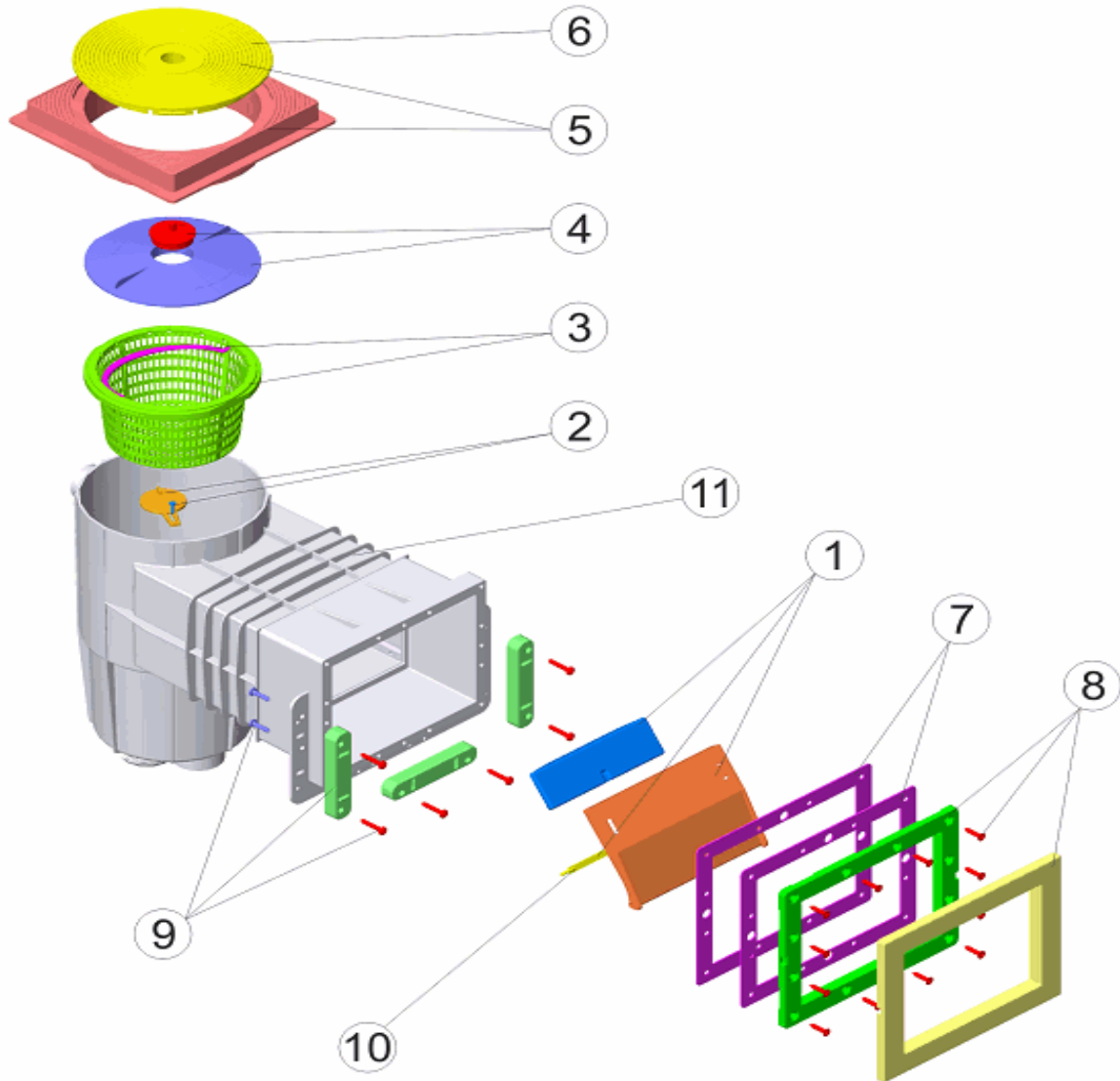


**ENGLISH**

| POS | CODE       | DESCRIPTION              | POS | CODE       | DESCRIPTION              |
|-----|------------|--------------------------|-----|------------|--------------------------|
| 1   | 4402010101 | FLAP RETAINING CLIP      | 7   | 4402011711 | LARGE SKIMMER GASKETS    |
| 2   | 4402010102 | KEYHOLE FLAP             | 8   | 4402011712 | LARGE SKIMMER FRAME P.P. |
| 3   | 4402010103 | SKIMMER BASKET           | 9   | 4402011613 | SPACERS                  |
| 4   | 4402010104 | VACUUM PLATE WITH PLUG   | 10  | 4402010110 | HINGE FLAP               |
| 5   | 4402010106 | SQUARE LID AND LID FRAME | 11  | 00249R0011 | SKIMMER BODY             |
| 6   | 4402010108 | CIRCULAR SKIMMER LID     | 12  | 28884R0001 | WIDE THROAT FOR PANELS   |

CODIGO **32379**

DESCRIPCION: **SKIMMER 15L P. PANELES B. ANCHA T. CUADRADA**

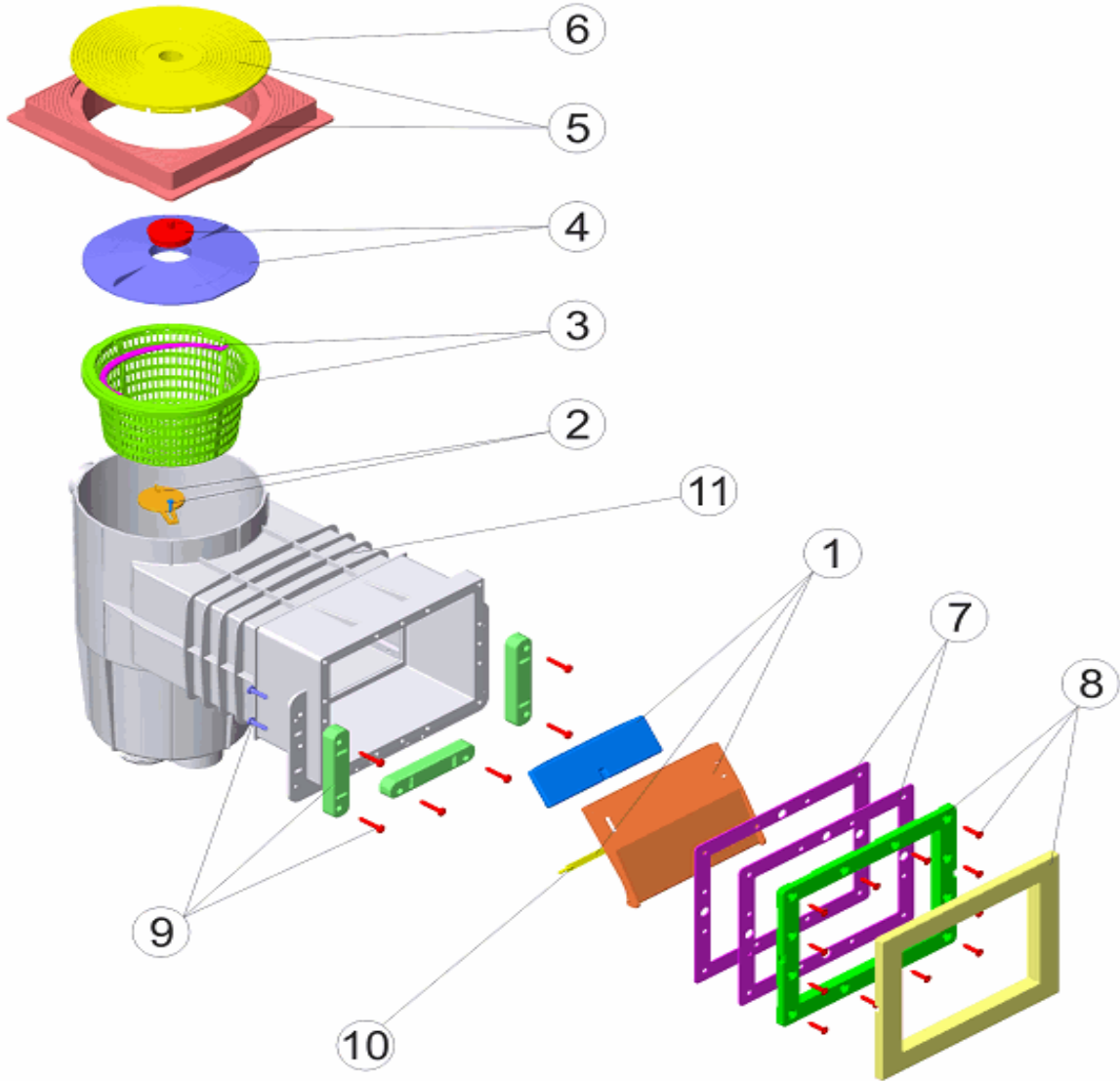


**ESPAÑOL**

| POS | CODIGO     | DESCRIPCION                  | POS | CODIGO     | DESCRIPCION               |
|-----|------------|------------------------------|-----|------------|---------------------------|
| 1   | 4402010101 | COMPUERTA SKIMMER BISAGRA    | 7   | 4402011711 | JUNTA SKIMMER GRANDE P.P. |
| 2   | 4402010102 | CLAPETA SKIMMER              | 8   | 4402011712 | MARCO GRANDE SKIMMER P.P. |
| 3   | 4402010103 | CESTO SKIMMER                | 9   | 4402011613 | GROSORES BOCA SKIMMER     |
| 4   | 4402010104 | TAPA CESTO SKIMMER CON TAPON | 10  | 4402010110 | BISAGRA COMPUERTA         |
| 5   | 4402010106 | TAPA Y ARO CUADRADO SKIMMER  | 11  | 00249R0011 | CUERPO SKIMMER 15L 2004   |
| 6   | 4402010108 | TAPA CIRCULAR SKIMMER        | 12  | 28884R0001 | BOCA ANCHA PARA PANELES   |

CODE **32379**

DESCRIPTION: **SKIMMER 15L P. PANNEAUX O. LARGE. C. CARRÉ**

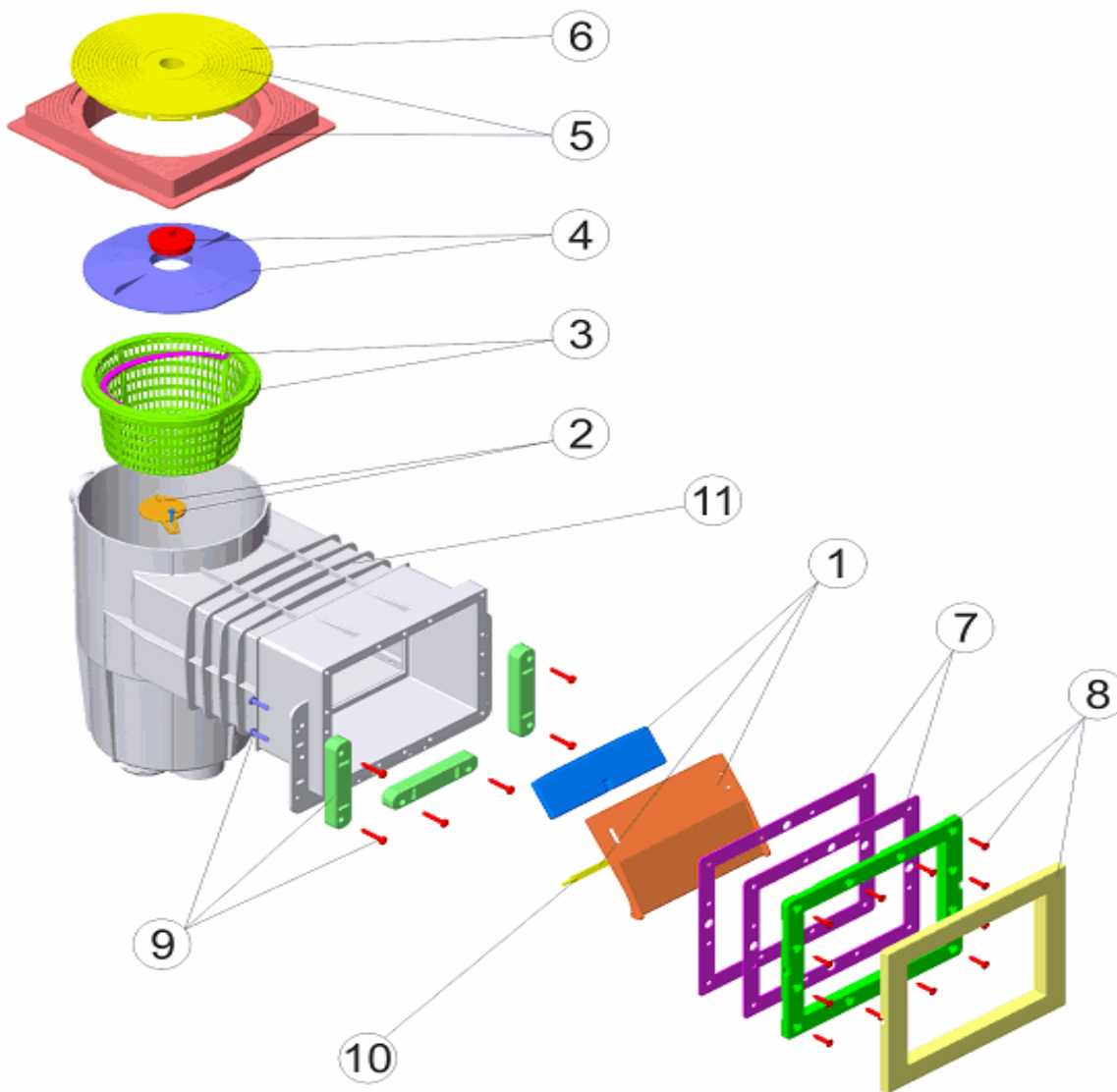


**FRANCAIS**

| POS | CODE       | DESCRIPTION                           | POS | CODE       | DESCRIPTION                    |
|-----|------------|---------------------------------------|-----|------------|--------------------------------|
| 1   | 4402010101 | VOLET ET CHARNIERE SKIMMER            | 7   | 4402011711 | JOINT SKIM GRAND P.P.          |
| 2   | 4402010102 | CLAPET SKIMMER                        | 8   | 4402011712 | GRAND CADRE SKIMMER P.P.       |
| 3   | 4402010103 | PANIER SKIMMER                        | 9   | 4402011613 | PLAQUE FIXATION BOUCHE SKIMMER |
| 4   | 4402010104 | COUVERCLE PANIER SKIMMER AVEC BOUCHON | 10  | 4402010110 | CHARNIERE VOLET                |
| 5   | 4402010106 | COUVERCLE ET CADRE CARRE SKIMMER      | 11  | 00249R0011 | CORPS DU SKIMMER 15L           |
| 6   | 4402010108 | COUVERCLE ROND SKIMMER                | 12  | 28884R0001 | BOUCHE LARGE POUR PANNEAUX     |

CODICE **32379**

DESCRIZIONE: **SKIMMER 15L P. PANNELLI B. LARGA TAPPO QUADRATO**

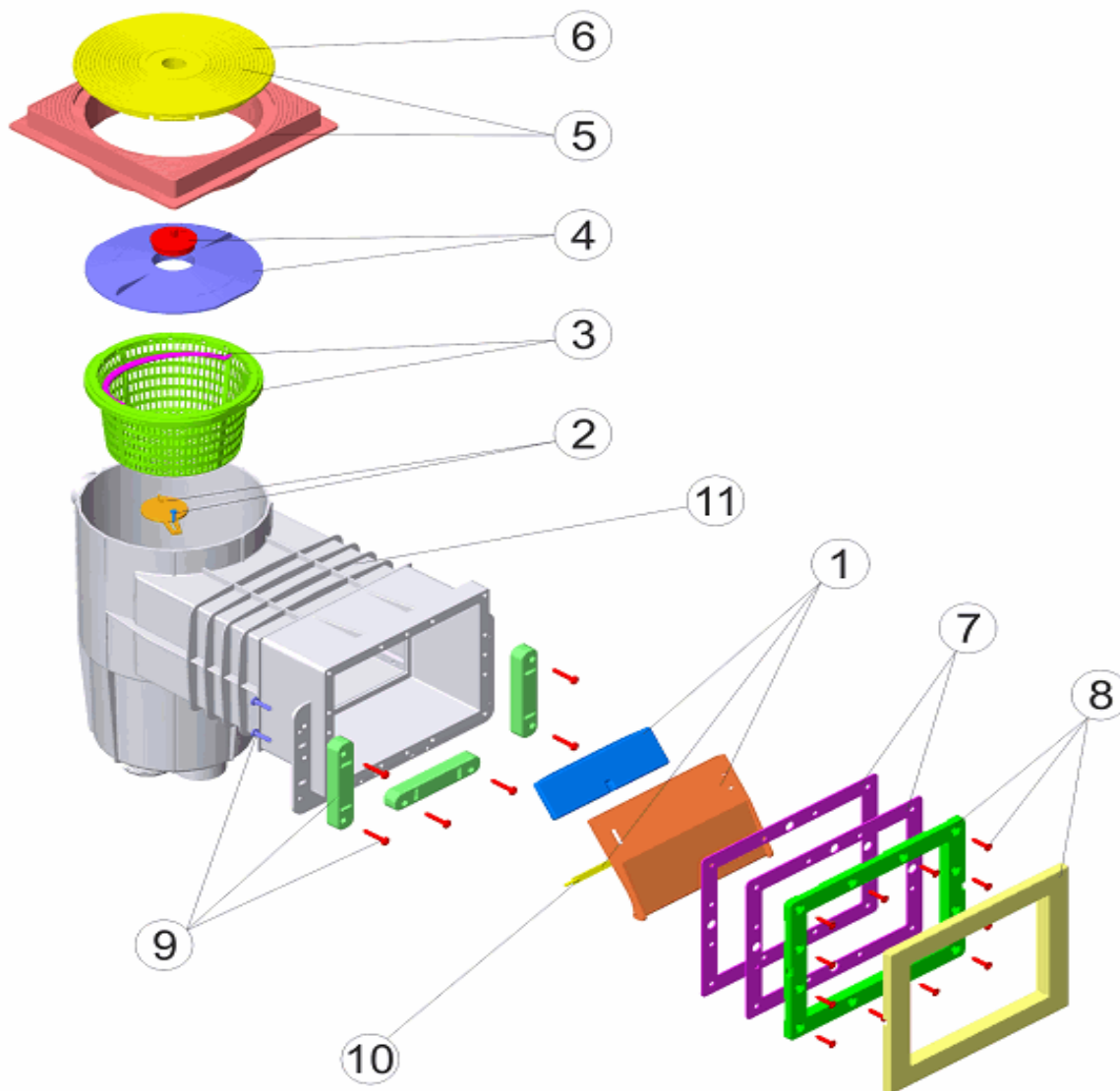


**ITALIANO**

| POS | CODICE     | DESCRIZIONE                          | POS | CODICE     | DESCRIZIONE                  |
|-----|------------|--------------------------------------|-----|------------|------------------------------|
| 1   | 4402010101 | BATTENTE SKIMMER CON PERNO           | 7   | 4402011711 | GUARNIZIONE PER SKIMMER P.P. |
| 2   | 4402010102 | ALETTA PARZIALIZZATRICE SKIMMER      | 8   | 4402011712 | FLANGIA SKIMMER P.P.         |
| 3   | 4402010103 | CESTELLO SKIMMER                     | 9   | 4402011613 | SPESSORE BOCCA SKIMMER IML   |
| 4   | 4402010104 | COPERCHIO CESTELLO SKIMMER CON TAPPO | 10  | 4402010110 | CERNIERE BATTENTE            |
| 5   | 4402010106 | COPERCHIO E CORNICE QUADRA SKIMMER   | 11  | 00249R0011 | CORPO SKIMMER 15 L           |
| 6   | 4402010108 | COPERCHIO TONDO SKIMMER              | 12  | 28884R0001 | BOCCA AMPIA PANNELLI         |

CODIGO **32379**

DESCRIÇÃO: **SKIMMER 15 L P. PAINÉIS B. LARGA T. QUADRADA**



**PORTUGUES**

| POS | CODIGO     | DESCRIÇÃO                    | POS | CODIGO     | DESCRIÇÃO                            |
|-----|------------|------------------------------|-----|------------|--------------------------------------|
| 1   | 4402010101 | COMPORTA SKIMMER BISAGRA     | 7   | 4402011711 | JUNTA GRANDE SKIMMER P.P.            |
| 2   | 4402010102 | CLAPETA SKIMMER              | 8   | 4402011712 | CAIXILHO BOCA SKIMMER P.P.           |
| 3   | 4402010103 | CESTO SKIMMER                | 9   | 4402011613 | TACO DE ENCHIMENTO PARA BOCA SKIMMER |
| 4   | 4402010104 | TAMPA CESTO SKIMMER          | 10  | 4402010110 | DOBRADIÇA COMPORTA                   |
| 5   | 4402010106 | TAMPA E ARO QUADRADO SKIMMER | 11  | 00249R0011 | SKIMMER 15L 2004                     |
| 6   | 4402010108 | TAMPA CIRCULAR SKIMMER       | 12  | 28884R0001 | BOCA ANCHO PARA PAINÉIS              |