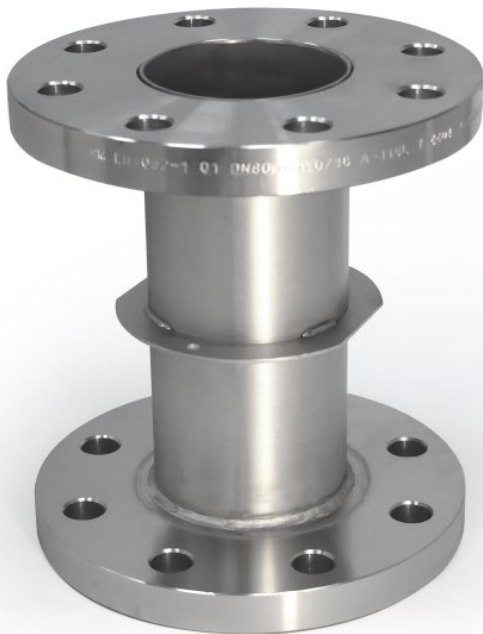


## CARACTERÍSTICAS TÉCNICAS TECHNICAL CHARACTERISTICS



▼ Los "Pipe Fittings" son la mejor manera de realizar conexiones entre tubos a través de la pared o el suelo de la fuente.

Hay disponibilidad de interconexión estándar de 3" y 4", y perfectamente combinables entre ellos.

Todos los modelos son muy robustos y resistentes a la oxidación al estar fabricados íntegramente en acero inoxidable AISI 316.

Pipe fittings are the best way of connecting pipes through the wall or the floor of a fountain.

Available in 3" and 4" standard sizes.

All models are extremely robust and resistant to rusting because they are made entirely of AISI 316 stainless steel.

### PIPE FITTING

#### Código / Code:

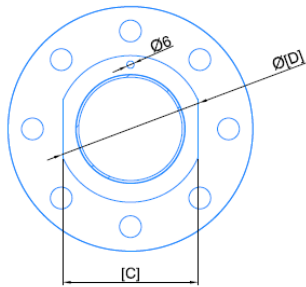
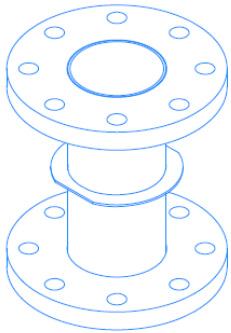
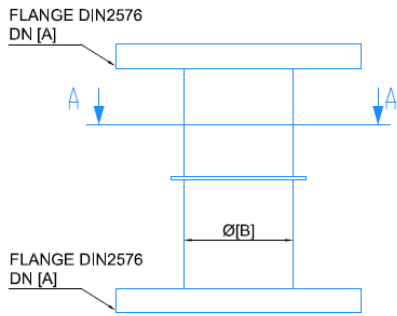
|              |                       | L [mm] | A   | B [mm] | C   | D   | E   |
|--------------|-----------------------|--------|-----|--------|-----|-----|-----|
| <b>66630</b> | PIPE FITTING FL-FL 3" | 220    | 80  | 88,9   | 110 | 120 | -   |
| <b>66631</b> | PIPE FITTING FL-FL 4" | 220    | 100 | 114,3  | 135 | 145 | -   |
| <b>66632</b> | PIPE FITTING FL-M 3"  | 220    | 3"  | 88,9   | 110 | 120 | 80  |
| <b>66633</b> | PIPE FITTING FL-M 4"  | 220    | 4"  | 114,3  | 135 | 145 | 100 |
| <b>66634</b> | PIPE FITTING FL-F 3"  | 220    | 3"  | 88,9   | 110 | 120 | 80  |
| <b>66635</b> | PIPE FITTING FL-F 4"  | 220    | 4"  | 114,3  | 135 | 145 | 100 |

66630 FT-06.18\_ES+EN

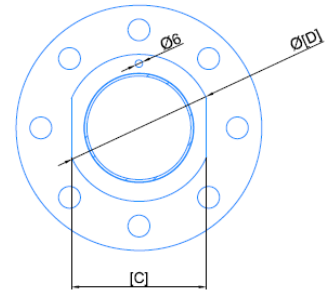
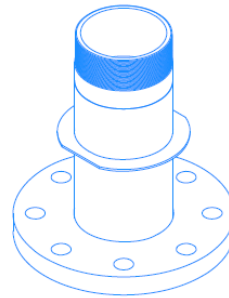
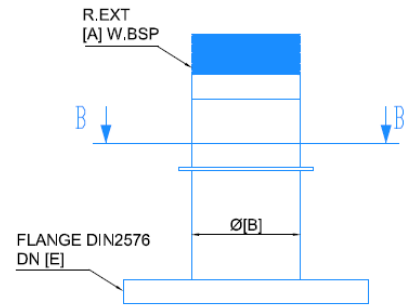
**DIMENSIONES**  
**DIMENSIONS**

**Código / Code:**

**66630, 66631**



**66632, 66633**



**66634, 66635**

