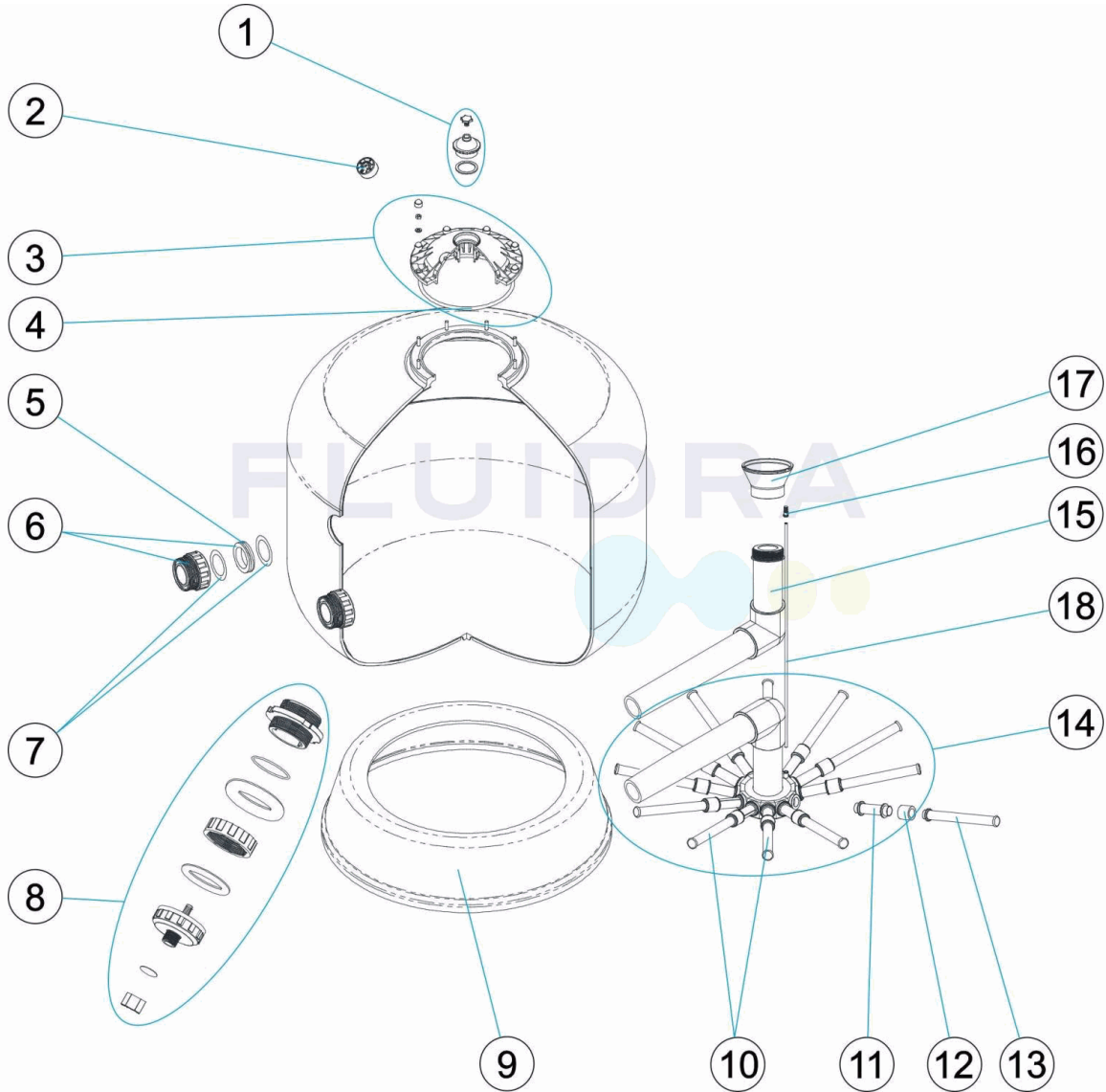


CODIGO **15397**

DESCRIPCION: **FILTRO BERLIN SALIDA LATERAL D.900**

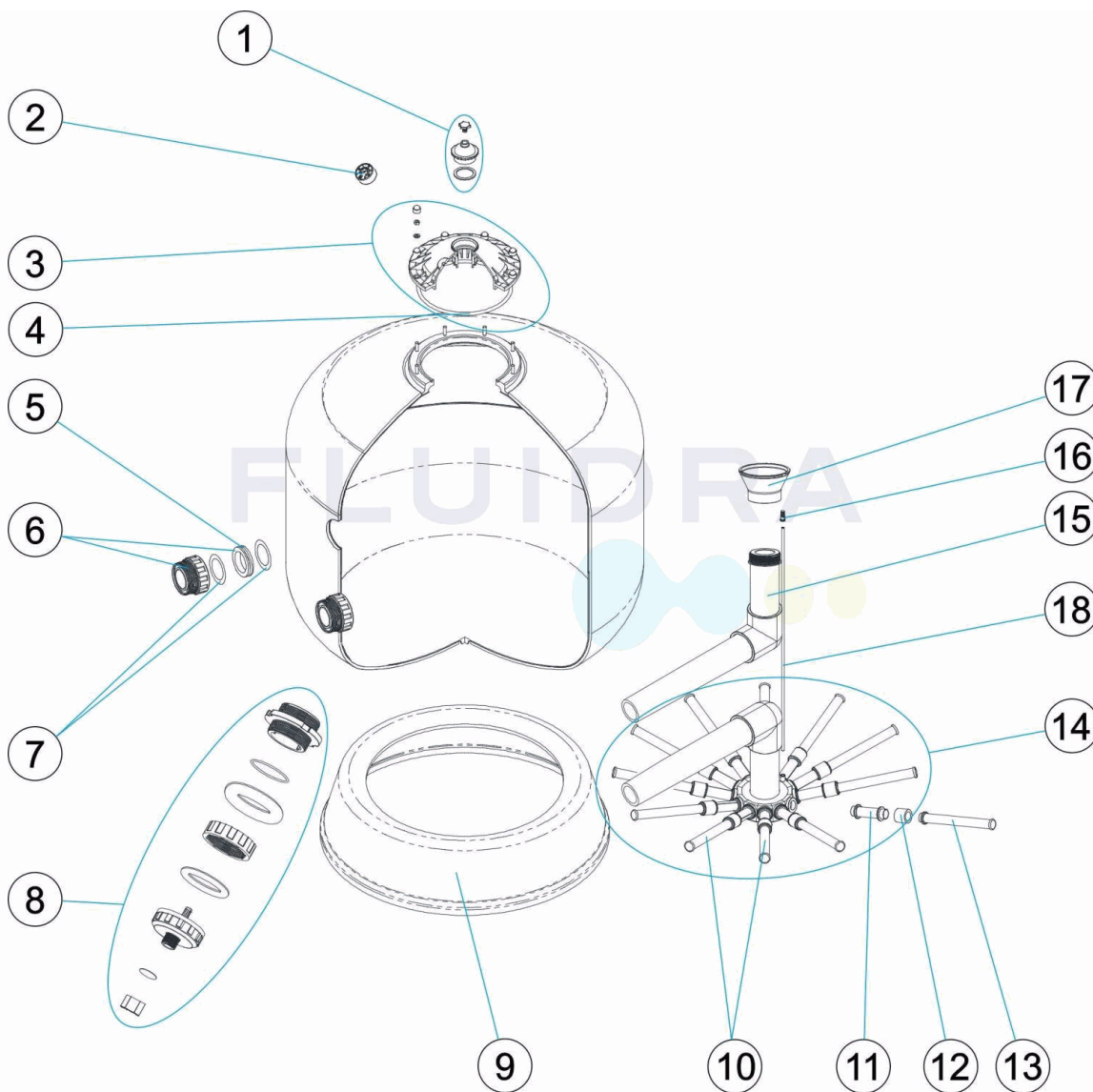


ESPAÑOL

POS	CODIGO	DESCRIPCION	POS	CODIGO	DESCRIPCION
1	4404070103	PURGA VISOR	10	4404260401	CJTO. BRAZOS COLECTOR D. 950 - 1050
2	4404010103	MANOMETRO 1/8" 3 KG./C "	11	4404260419	BRAZO COLECTOR 1" 100 M "
3	4404070102	TAPA FILTRO	12	4404260418	MANGUITO ENLACE UNION 1"
4	4404070101	JUNTA TAPA	13	4404300916	BRAZO COLECTOR 1" 225 M "
5	4404020211	JUNTA CONCAVA 2"	14	4404040040	CJTO. COLECTOR 900 2"
6	4404020203	RACORD 2" + JUNTA	15	4404040041	CJTO. DIFUSOR D. 900
7	4404070113	CORRECTORA + JUNTA SALIDA 2"	16	4404040108	PURGA AIRE
8	4404070204	CJTO. PURGA ARENA FILTRO 2 1/2"	17	4404300910	CONO DIFUSOR D. 63
9	4404260000	PIE FILTRO 900 (ENCOLADO)	18	00544R0405	TUBO PVC 6M/M.

CODE **15397**

DESCRIPTION: **FILTRE BERLIN SORTIE LATÉRALE D.900**

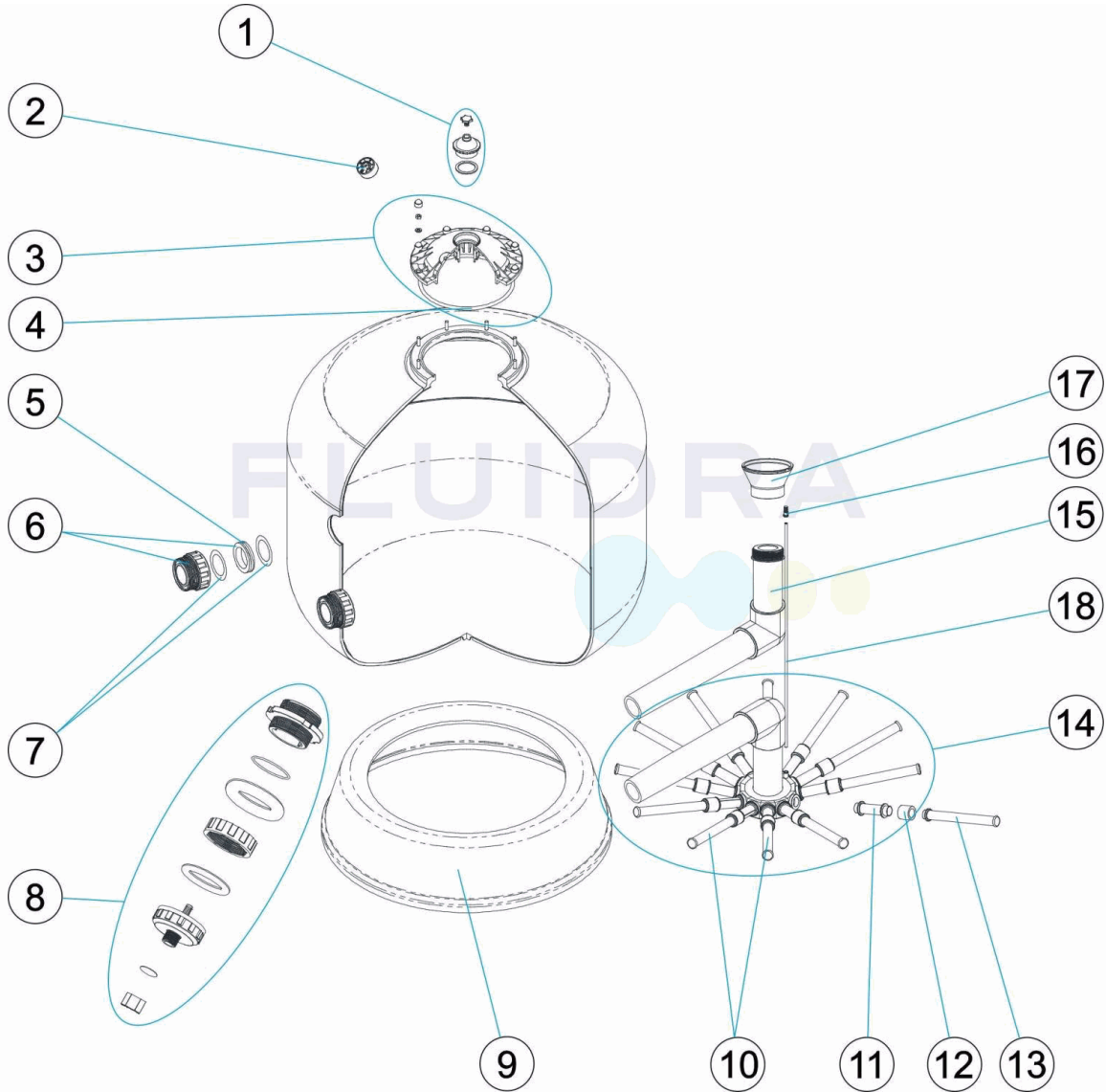


FRANCAIS

POS	CODE	DESCRIPTION	POS	CODE	DESCRIPTION
1	4404070103	PURGE	10	4404260401	ENSEMBLE BRAS DE REPARTITEUR D. 950-1050
2	4404010103	MANOMETRE 1/8" 3 KG./C "	11	4404260419	BRAS DE REPARTITEUR 1" 100M "
3	4404070102	COUVERCLE DE FILTRE	12	4404260418	MANCHON UNION 1"
4	4404070101	JOINT DE COUVERCLE	13	4404300916	BRAS DE REPARTITEUR 1" 225 M "
5	4404020211	JOINT CONCAVE 2"	14	4404040040	ENSEMBLE COLLECTEUR 900 2"
6	4404020203	RACCORD 2' + JOINT	15	4404040041	ENSEMBLE DIFFUSEUR D. 900
7	4404070113	CORRECTOUR + JOINT SORTIE 2"	16	4404040108	PURGE D'AIR
8	4404070204	ENSEMBLE PURGE SABLE FILTRE 2 1/2"	17	4404300910	DIFUSOR CONIQUE SUPÉRIOR D. 63
9	4404260000	SOCLE FILTRE D 900	18	00544R0405	TUBE PVC 6MM

CODE **15397**

DESCRIPTION: **BERLIN FILTER SIDE OUTLET D. 900**

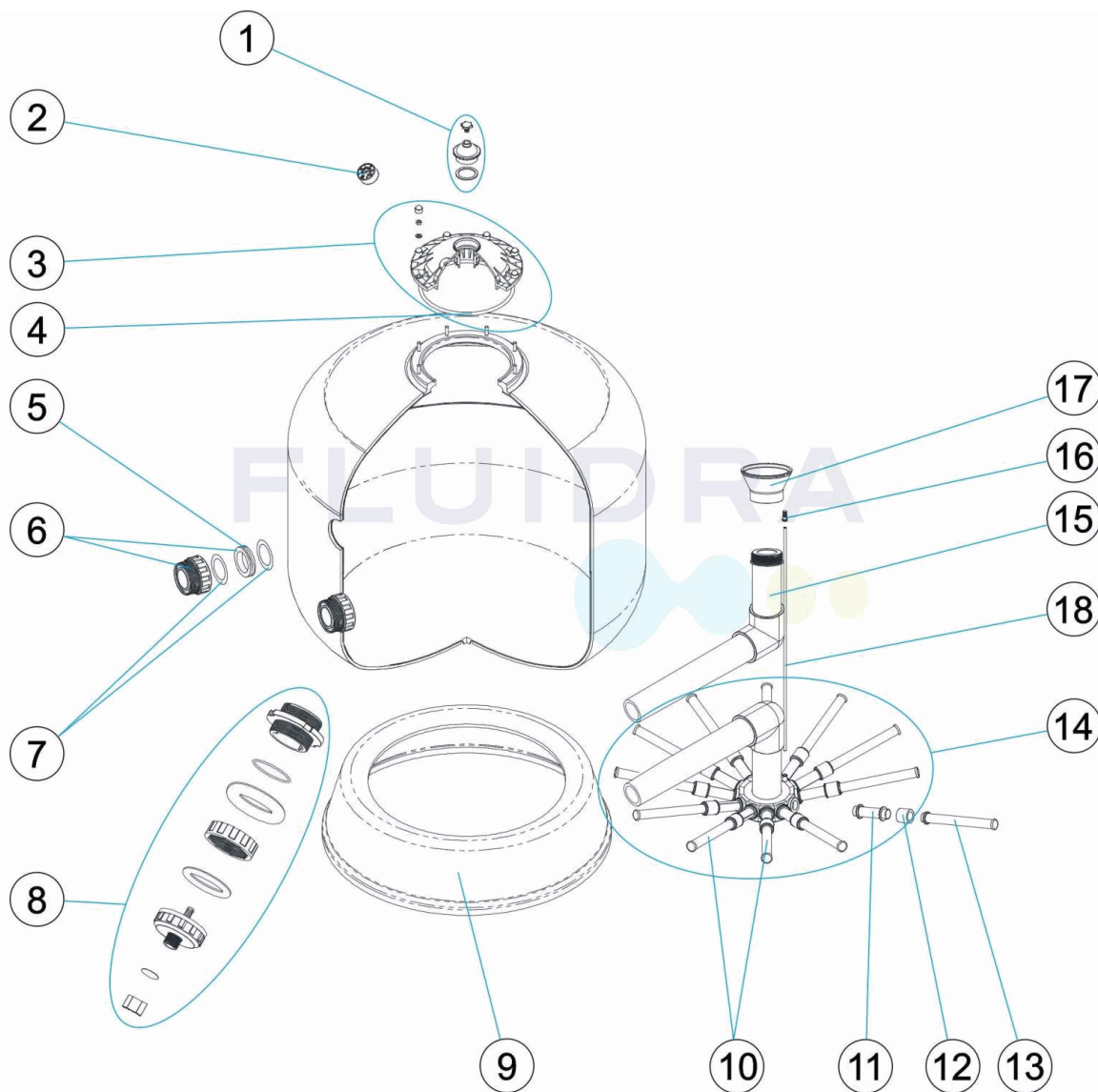


ENGLISH

POS	CODE	DESCRIPTION	POS	CODE	DESCRIPTION
1	4404070103	AIR RELIEF SIGHT GLASS	10	4404260401	MANIFOLD ARM ASSEMBLY D. 950-1050
2	4404010103	PRESSURE GAUGE 1/8" 3 KG./C "	11	4404260419	MANIFOLD ARM 1" 100 M "
3	4404070102	FILTER LID	12	4404260418	UNION 1"
4	4404070101	LID GASKET	13	4404300916	MANIFOLD ARM 1" 225 M "
5	4404020211	CONCAVE GASKET 2"	14	4404040040	COLLECTOR ASSEMBLY 900 2"
6	4404020203	2" FITTING + GASKET	15	4404040041	DIFFUSER ASSEMBLY D. 900
7	4404070113	CODIRECTOR + OUTLET GASKET 2"	16	4404040108	AIR PURGE
8	4404070204	2 1/2" SET DRAIN FILTRATION SAN "	17	4404300910	DIFFUSER CONE D. 63
9	4404260000	FILTER BASE D. 900	18	00544R0405	TUBE 6MM

CODICE 15397

DESCRIZIONE: FILTRO BERLIN USCITA LATERALE D. 900

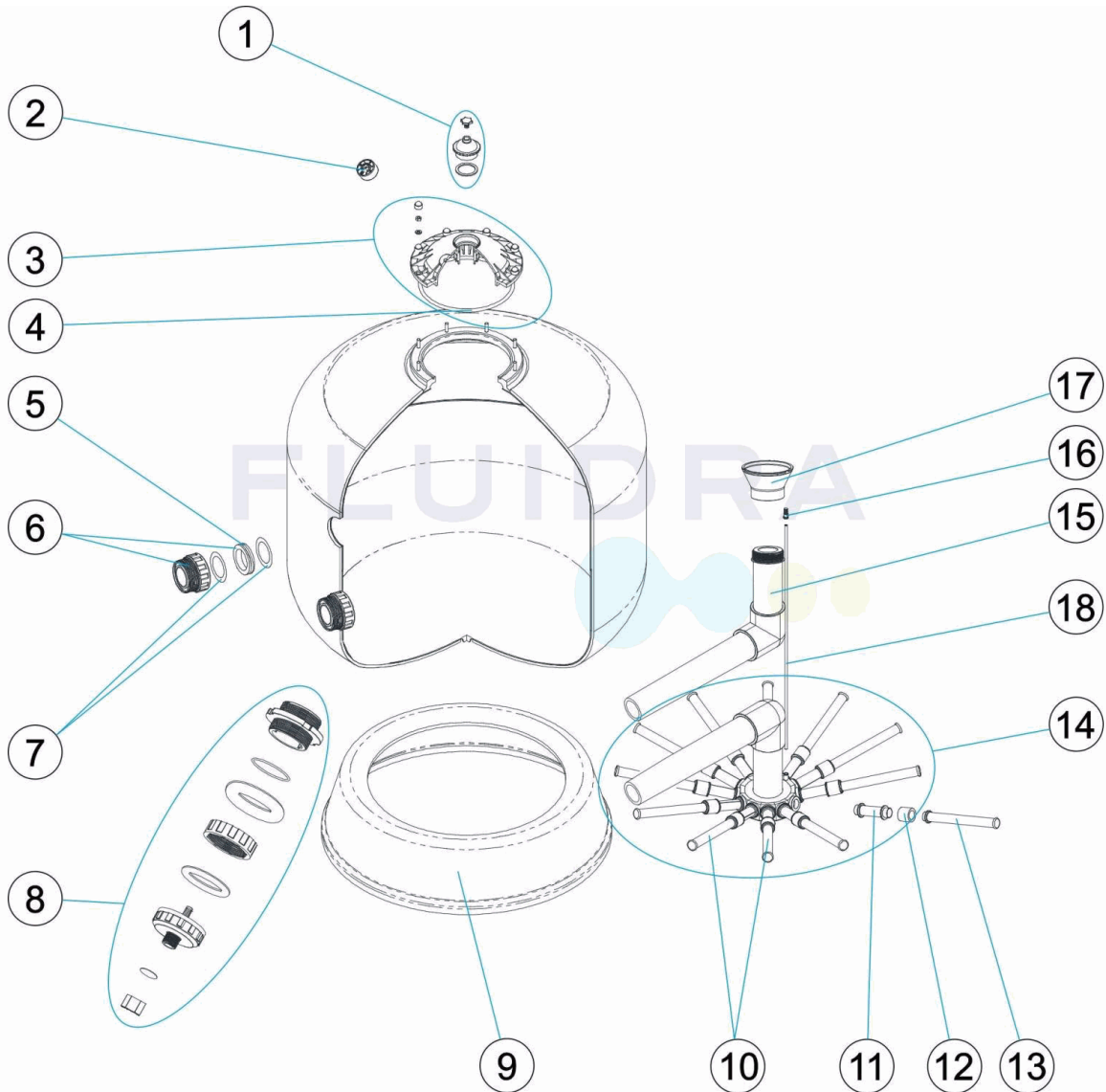


ITALIANO

POS	CODICE	DESCRIZIONE	POS	CODICE	DESCRIZIONE
1	4404070103	SCARICO VISORE	10	4404260401	GRUPPO CANDELOTTO COLLECTORE D. 950-1050
2	4404010103	MANOMETRO 1/8" 3 KG./C "	11	4404260419	CANDELOTTO COLLECTORE 1" 100M "
3	4404070102	COPERCHIO FILTRO	12	4404260418	MANICOTTO DA 1" PER CANDELOTT "
4	4404070101	GUARNIZIONE COPERCHIO	13	4404300916	CANDELOTTO COLLECTORE 1" 225 M "
5	4404020211	GUARNIZIONI CONCAVA 2"	14	4404040040	KIT COLLETTORE 900 2"
6	4404020203	RACCORDO 2' + GUARNIZIONE	15	4404040041	RACCORDO DIFFUSORE D. 900
7	4404070113	CAVO FARO, PRESSACAVO	16	4404040108	SFIATO ARIA
8	4404070204	KIT SCARIO SABBIA 2 1/2"	17	4404300910	CONO DIFFUSORE D. 63
9	4404260000	BASE FILTRO D 900	18	00544R0405	TUBO PVC 6 MM

CODE 15397

BESCHREIBUNG: FILTER BERLIN AUSGANG SEITLICH D.900

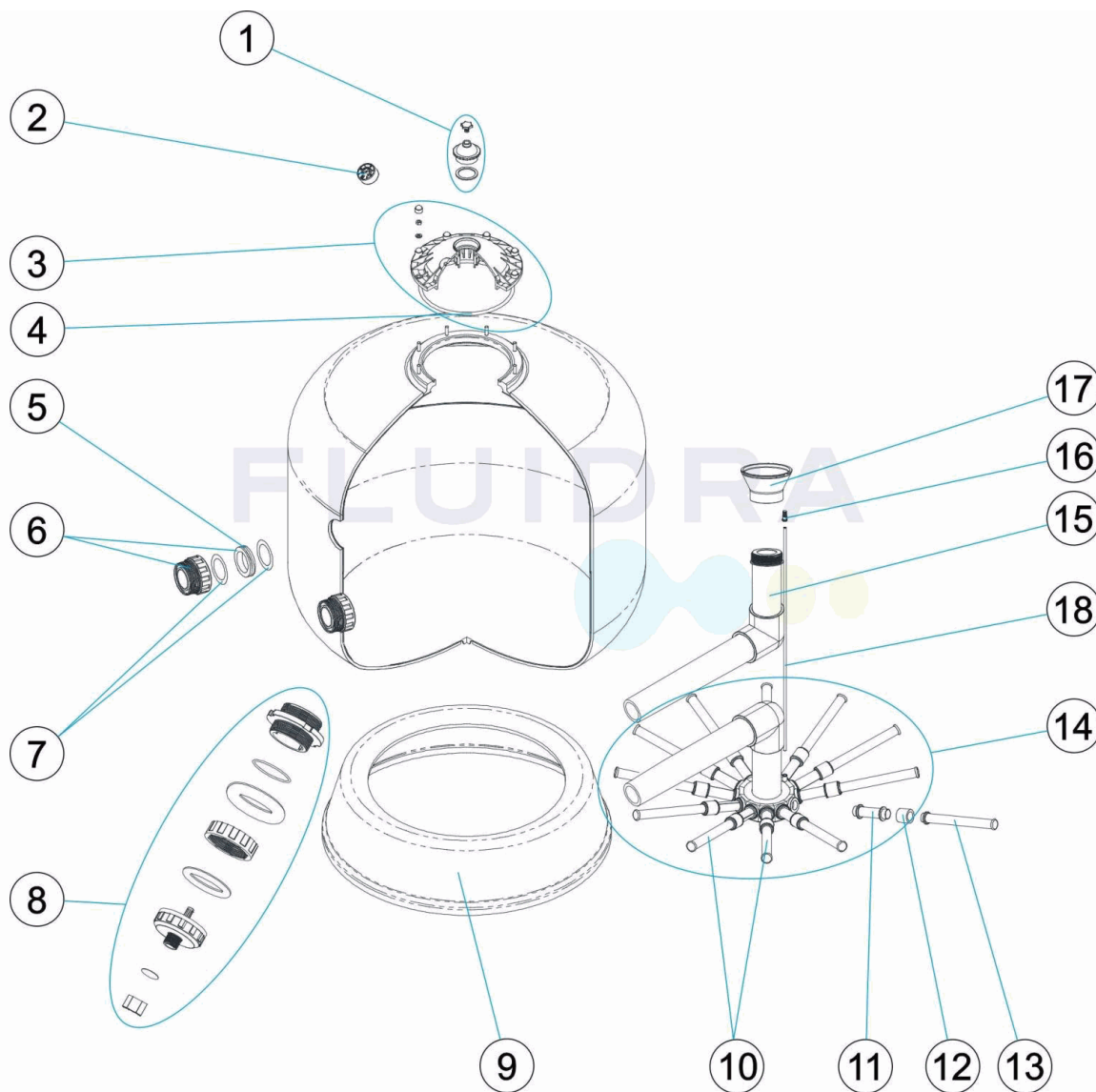


DEUTSCH

POS	CODE	BESCHREIBUNG	POS	CODE	BESCHREIBUNG
1	4404070103	ABLASS SCHAUGLAS	10	4404260401	SET FILTERSTERN-SCHLITZROHR D. 950 - 1050
2	4404010103	MANOMETER 1/8" 3 KG/C "	11	4404260419	FILTERSTERN-SCHLITZROHR 1" 100 M "
3	4404070102	FILTERDECKEL	12	4404260418	NIPPEL ANSCHLUSSVERBINDUNG 1"
4	4404070101	DICHTUNG ABDECKUNG	13	4404300916	FILTERSTERN-SCHLITZROHR 1" 225 M "
5	4404020211	DICHTUNG KONKAV 2"	14	4404040040	SAMMELROHRSET 900 2"
6	4404020203	GEWINDESTÜCK 2" UND DICHTUNG	15	4404040041	SET WASSERVERTEILER D. 900
7	4404070113	KORREKTURSTÜCK UND DICHTUNG AUSGANG 2"	16	4404040108	ENTLÜFTUNG
8	4404070204	SET SANDENTLEERUNG FILTER 2 1/2"	17	4404300910	KEGEL WASSERVERTEILER D. 63
9	4404260000	FILTERFUSS 900 (GEKLEBT)	18	00544R0405	ROHR PVC 6 MM

CODIGO **15397**

DESCRIÇÃO: **FILTRO BERLIN SAÍDA LATERAL D.900**



PORTUGUES

POS	CODIGO	DESCRIÇÃO	POS	CODIGO	DESCRIÇÃO
1	4404070103	FECHO COMPLETO	10	4404260401	CJTO. BRAÇO COLECTOR D.950-1050
2	4404010103	MANOMETRO 1/8" 3 KG./C "	11	4404260419	BRAÇO COLECTOR 1" 100M "
3	4404070102	TAMPA FILTRO	12	4404260418	RACCORD UNIÃO 1"
4	4404070101	JUNTA TAMPA	13	4404300916	BRAÇO COLECTOR 1" 225 M "
5	4404020211	JUNTA CÔNCAVA 2"	14	4404040040	CONJ. COLECTOR 900 2"
6	4404020203	RACORD 2" + JUNTA	15	4404040041	CJTO. DIFUSOR D. 900
7	4404070113	CABO P' ROJECTOR BUCIM PROJECTOR LEDS	16	4404040108	PURGA AREIA
8	4404070204	CONJUNTO PURDA AREIA DE FILTRO 2 1/2"	17	4404300910	CONO DIFUSOR D. 63
9	4404260000	PÉ FILTRO D 900	18	00544R0405	TUBO PVC 6 MM