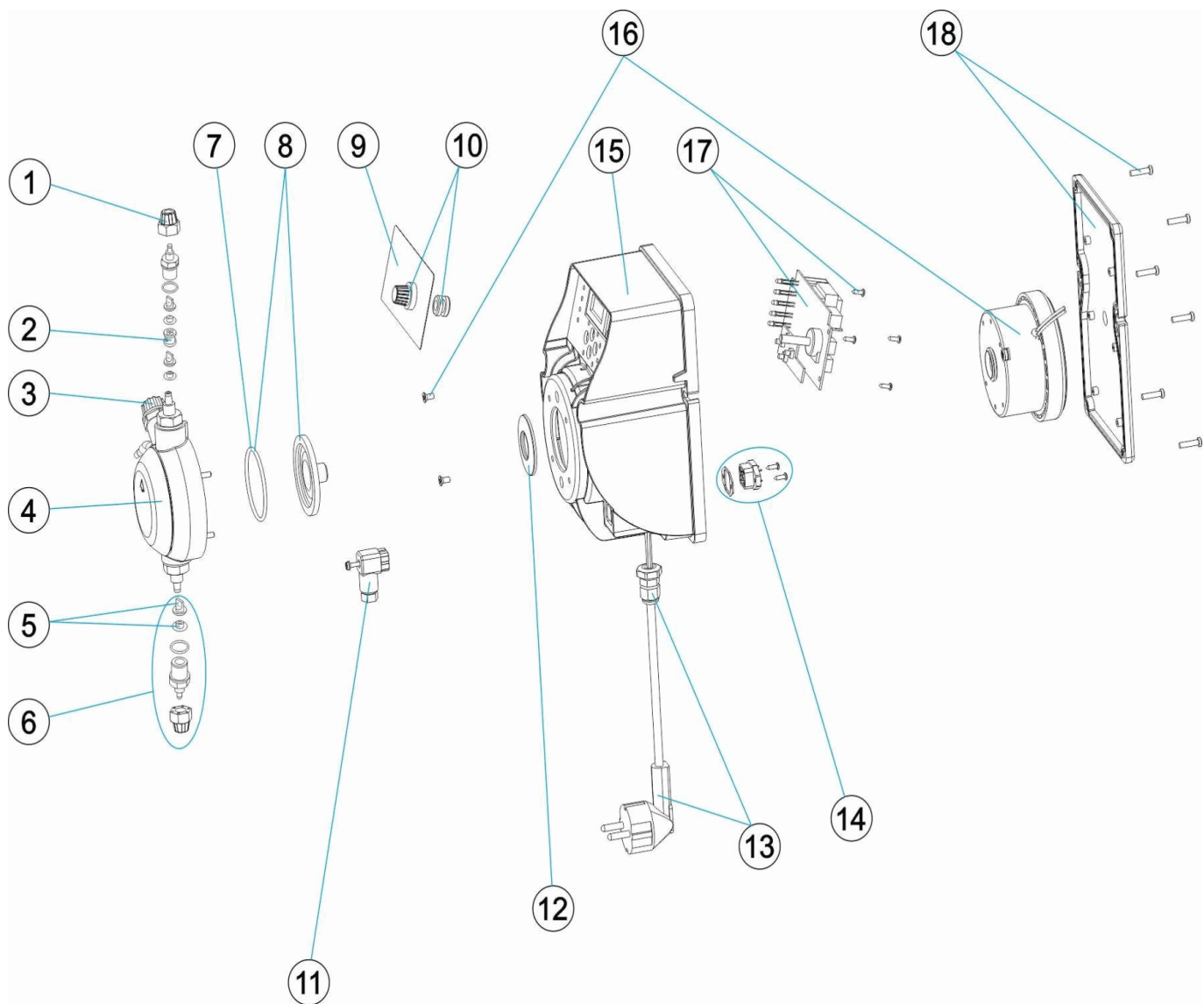


CODIGO **65983, 65984, 65985, 65986**

DESCRIPCION: **BOMBA DOSIFICADORA CLASS ON-OFF**



ESPAÑOL

POS	CODIGO	DESCRIPCION	POS	CODIGO	DESCRIPCION
1	CE08030126	TUERCA SUJECCION TUBO	9	CE08030059	CARATULA COMANDO
2	CE08033111	DISTANCIADOR PURGA AIRE	10	CE08031806	ARANDELA Y MANDO POTENCIOMETRO
3	CE08032308	TAPON PURGA CABEZAL CP STD	11	CE08031729	CONECTOR DE NIVEL
4	CE08033102	CABEZAL COMPLETO 5-10 L.	12	* CE08030531	ARANDELA PISTON 5L 7KG
5	CE08030116	VALVULA VITON + SOPORTE	12	* CE08030037	ARANDELA PISTON 10 L. 5 KG.
5	CE08030117	VALVULA SILICONA + SOPORTE	12	* CE08031122	ARANDELA PISTON 20L 5KG
5	CE08030115	VALVULA DUTRAL + SOPORTE	13	CE08033110	CABLE ALIMENTACION
6	CE08030113	CUERPO RACORD + VITON	14	CE08031405	CONECTOR MACHO
6	CE08030114	CUERPO RACORD + SILICONA	15	CE08030064	CAJA BOMBA CLASS
6	CE08030112	CUERPO RACORD + DUTRAL	16	* CE08030921	ELECTROIMAN 2 L. 5KG
7	* CE08030111	JUNTA TORICA CABEZAL	16	* CE08030118	ELECTROIMAN COMPLETO 5L 7KG
7	* CE08030413	JUNTA TORICA CABEZAL 20L 5KG	16	* CE08030517	ELECTROIMAN 10L 5KG
8	* CE08030119	MEMBRANA COMPLETA	16	* CE08030065	ELECTROIMAN 20L 3KG

* -> VER HOJA DE OBSERVACIONES

CODIGO **65983, 65984, 65985, 65986**DESCRIPCION: **BOMBA DOSIFICADORA CLASS ON-OFF**

8	* CE08030429	MEMBRANA COMPLETA 20L 5KG	17	* CE08030035	CIRCUITO ELECTRONICO MA/ADL + NIVEL 230V
17	* CE08030036	CIRCUITO ELECTRONICO MA/ADL + NIVEL 20L-5KG	18	CE08030067	TAPA TRASERA BOMBA

CODIGO **65983, 65984, 65985, 65986**

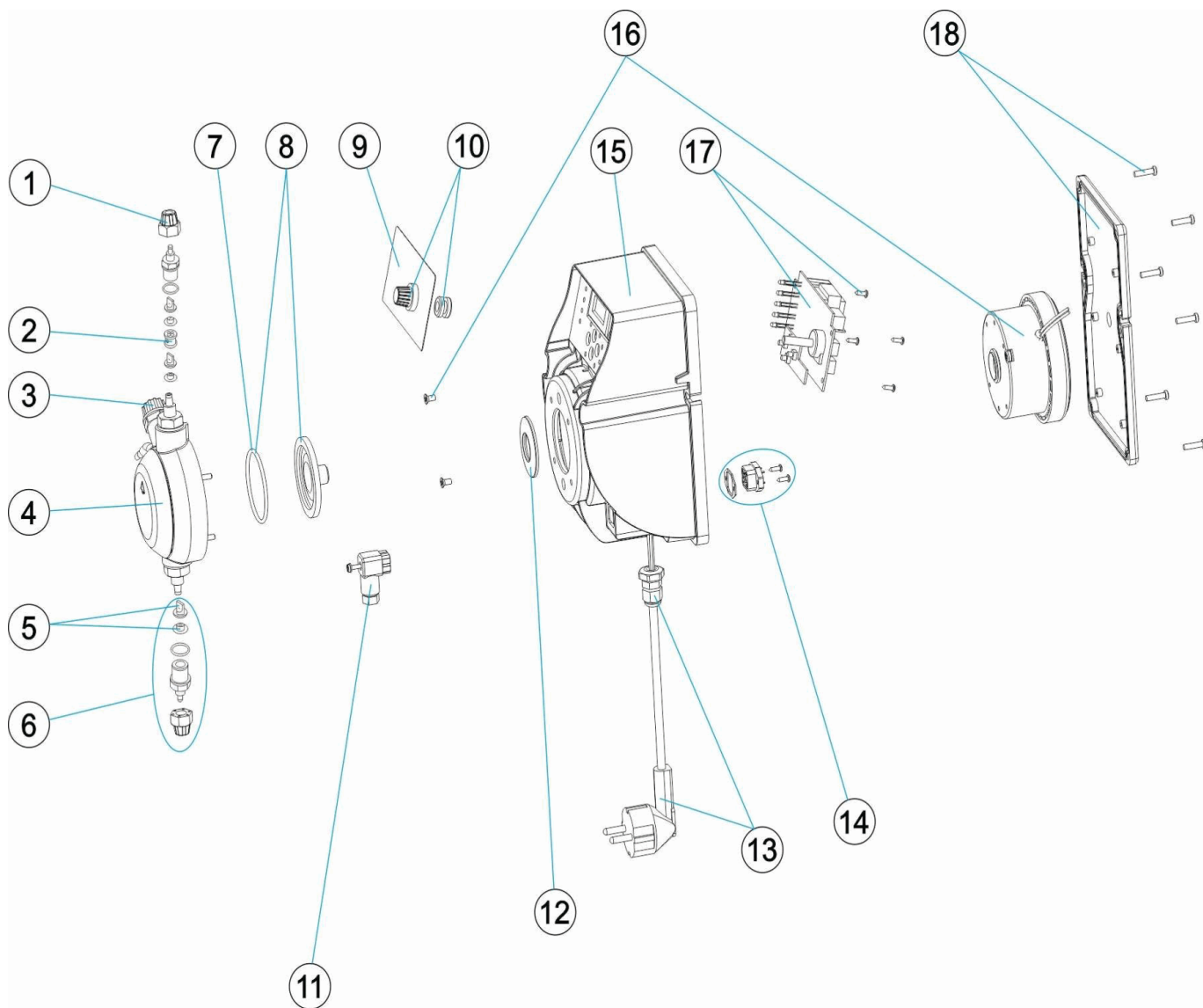
DESCRIPCION: **BOMBA DOSIFICADORA CLASS ON-OFF**

OBSERVACIONES

POS	CODIGO	OBSERVACIONES
7	CE08030111	PARA: 65983, 65984, 65985
7	CE08030413	PARA: 65986
8	CE08030119	PARA: 65983, 65984, 65985
8	CE08030429	PARA: 65986
12	CE08030531	PARA: 65983, 65984
12	CE08030037	PARA: 65985
12	CE08031122	PARA: 65986
16	CE08030921	PARA: 65983
16	CE08030118	PARA: 65984
16	CE08030517	PARA: 65985
16	CE08030065	PARA: 65986
17	CE08030035	PARA: 65983, 65984, 65985
17	CE08030036	PARA: 65986

CODE **65983, 65984, 65985, 65986**

DESCRIPTION: **POMPE DOSEUSE CLASS ON-OFF**



FRANCAIS

POS	CODE	DESCRIPTION	POS	CODE	DESCRIPTION
1	CE08030126	ECROU DE TUBE D'ASPIRATION	9	CE08030059	BOÎTIER COMMANDES
2	CE08033111	DISTANCIALE DE PURGE	10	CE08031806	RONDELLE ET TÉLÉCOMMANDE POTENTIOMÈTRE
3	CE08032308	BOUCHON PURGE	11	CE08031729	CONECTEUR DE NIVEAU
4	CE08033102	TETE COMPLET 5-10 L.	12	* CE08030531	RONDELLE PISTON 5L 7KG
5	CE08030116	CLAPET VITON + SUPPORT	12	* CE08030037	RONDELLE PISTON 10L 5KG
5	CE08030117	CLAPET SILICONA + SUPPORT	12	* CE08031122	RONDELLE PISTON 20L 5KG
5	CE08030115	CLAPET DUTRAL + SUPPORT	13	CE08033110	CABLE ALIMENTATION
6	CE08030113	CORPS RACCORD + CLAPET VITON	14	CE08031405	CONNECTEUR MÂLE
6	CE08030114	CORPS RACCORD + CLAPET SILICONE	15	CE08030064	CARCASSE POMPE CLASS
6	CE08030112	CORPS RACCORD + CLAPET DUTRAL	16	* CE08030921	ELECTROAIMANT 2 L. 5KG
7	* CE08030111	JOINT TORIQUE TETE	16	* CE08030118	ELECTROAIMANT COMPLETO 5L 7KG
7	* CE08030413	JOINT TORIQUE TETE 20L 5KG	16	* CE08030517	ELECTROAIMANT 10L 5KG
8	* CE08030119	MEMBRANE COMPLETE	16	* CE08030065	ELECTROAIMANT 20L 3KG

* -> VOIR FICHE D'OBSERVATIONS

CODE **65983, 65984, 65985, 65986**

DESCRIPTION: **POMPE DOSEUSE CLASS ON-OFF**

8	* CE08030429	MEMBRANE COMPLETE 20L 5KG	17	* CE08030035	CIRCUIT ELECTRONIQUE MA/ADL
17	* CE08030036	CIRCUIT ELECTRONIQUE MA/ADL 20L-5KG	18	CE08030067	COUVERCLE POMPE

CODE **65983, 65984, 65985, 65986**

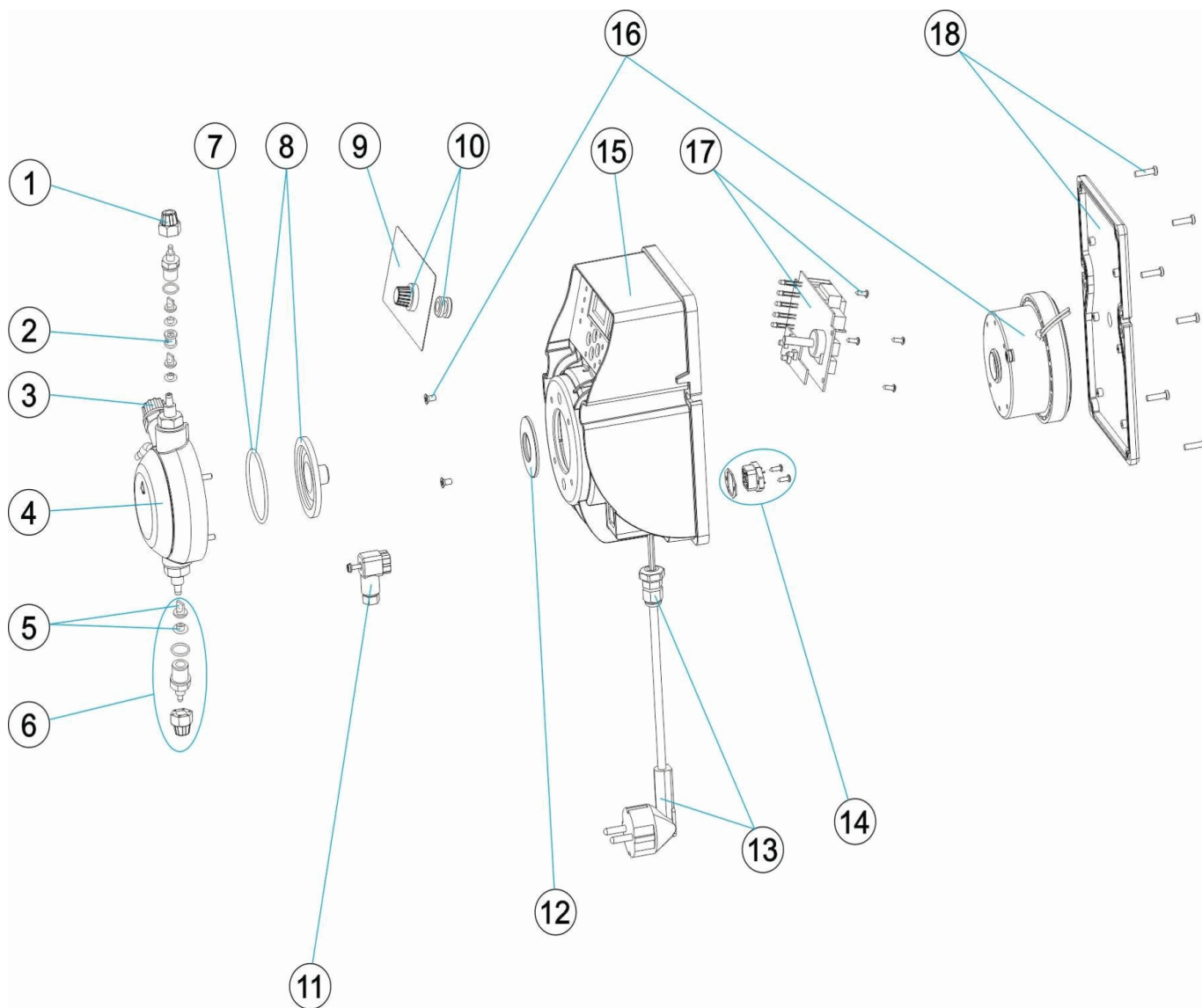
DESCRIPTION: **POMPE DOSEUSE CLASS ON-OFF**

OBSERVATIONS

POS	CODE	OBSERVATIONS
7	CE08030111	POUR: 65983, 65984, 65985
7	CE08030413	POUR: 65986
8	CE08030119	POUR: 65983, 65984, 65985
8	CE08030429	POUR: 65986
12	CE08030531	POUR: 65983, 65984
12	CE08030037	POUR: 65985
12	CE08031122	POUR: 65986
16	CE08030921	POUR: 65983
16	CE08030118	POUR: 65984
16	CE08030517	POUR: 65985
16	CE08030065	POUR: 65986
17	CE08030035	POUR: 65983, 65984, 65985
17	CE08030036	POUR: 65986

CODE **65983, 65984, 65985, 65986**

DESCRIPTION: **DOSING PUMP CLASS ON-OFF**



ENGLISH

POS	CODE	DESCRIPTION	POS	CODE	DESCRIPTION
1	CE08030126	SUCTION TUBE NUT	9	CE08030059	CONTROL FACEPLATE
2	CE08033111	DISTANCIALE FOR BLEEDING	10	CE08031806	WASHER AND POTENTIOMETER KNOB
3	CE08032308	DRAIN PLUG	11	CE08031729	FEMALE CONNECTOR BCN
4	CE08033102	COMPLETE HEAD ASSEMBLY 5-10 L.	12	* CE08030531	PISTON WASHER 5L 7KG
5	CE08030116	VITON VALVE + SUPPORT	12	* CE08030037	PISTON WASHER 10L 5KG
5	CE08030117	SILICON VALVE + SUPPORT	12	* CE08031122	PISTON WASHER 20L 5KG
5	CE08030115	DUTRAL VALVE + SUPPORT	13	CE08033110	SUPPLY CABLE
6	CE08030113	HEAD CONNECTOR BODY + VITON	14	CE08031405	MALE CONNECTOR
6	CE08030114	HEAD CONNECTOR BODY + SILICON	15	CE08030064	PUMP BOX CLASS
6	CE08030112	HEAD CONNECTOR BODY + DUTRAL	16	* CE08030921	ELECTROMAGNET 2 L. 5KG
7	* CE08030111	HEAD O RING	16	* CE08030118	ELECTROMAGNET ASSEMBLY COMPLETEO 5L 7K
7	* CE08030413	HEAD O RING 20L 5KG	16	* CE08030517	ELECTROMAGNET 10L 5KG
8	* CE08030119	DIAPHRAM COMPLETE	16	* CE08030065	ELECTROMAGNET 20L 3KG

* -> SEE OBSERVATIONS SHEET



PARTS BREAKDOWN

REV.: 0
DATE: 26/04/2017
SHEET: 2 / 3

1136

CODE **65983, 65984, 65985, 65986**

DESCRIPTION: **DOSING PUMP CLASS ON-OFF**

8	* CE08030429	DIAPHRAM COMPLETE 20L 5KG	17	* CE08030035	ELECTRONIC CIRCUIT MA/ADL
17	* CE08030036	ELECTRONIC CIRCUIT MA/ADL 20L-5KG	18	CE08030067	PUMP REAR COVER

CODE **65983, 65984, 65985, 65986**

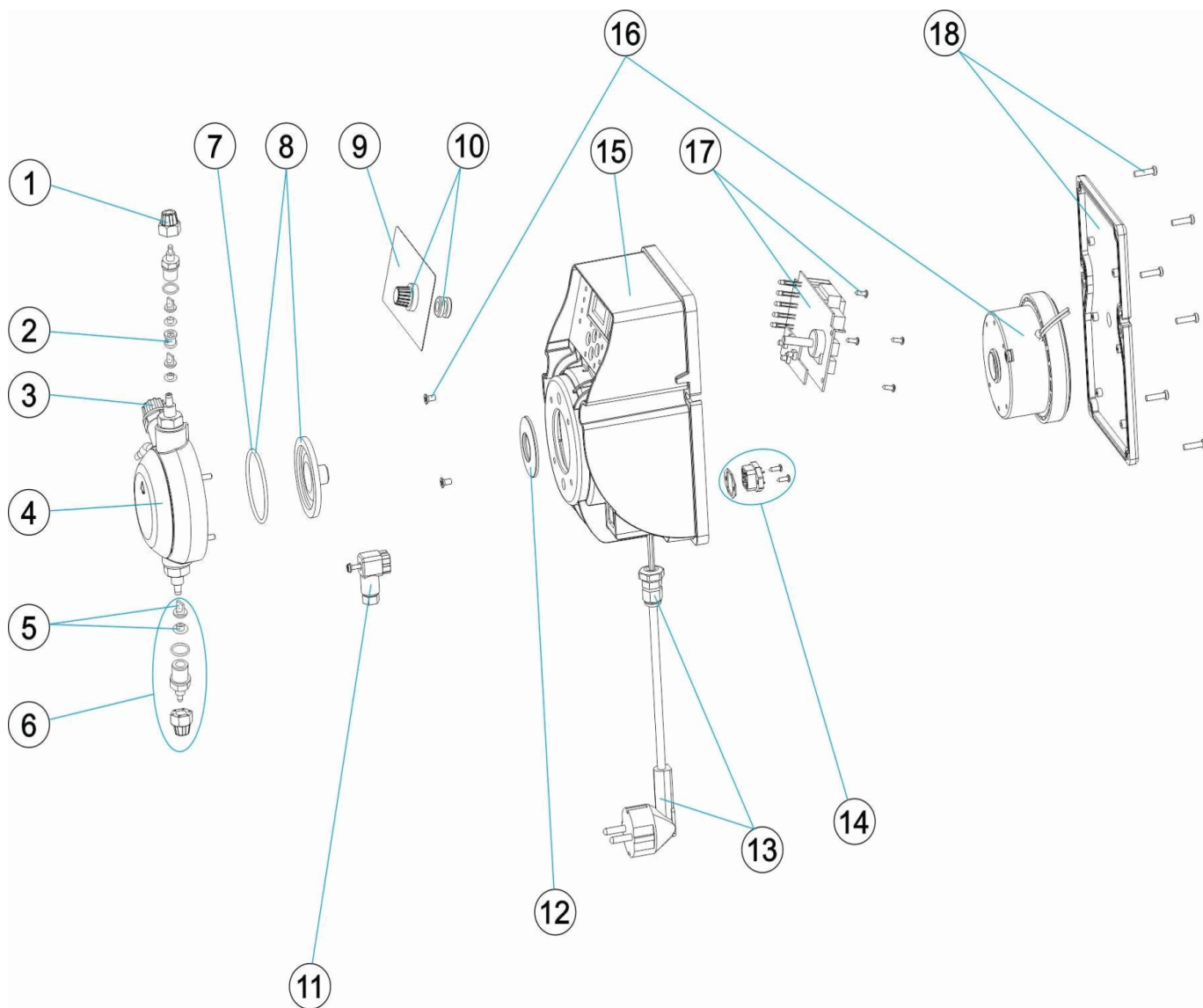
DESCRIPTION: **DOSING PUMP CLASS ON-OFF**

OBSERVATIONS

POS	CODE	OBSERVATIONS
7	CE08030111	FOR: 65983, 65984, 65985
7	CE08030413	FOR: 65986
8	CE08030119	FOR: 65983, 65984, 65985
8	CE08030429	FOR: 65986
12	CE08030531	FOR: 65983, 65984
12	CE08030037	FOR: 65985
12	CE08031122	FOR: 65986
16	CE08030921	FOR: 65983
16	CE08030118	FOR: 65984
16	CE08030517	FOR: 65985
16	CE08030065	FOR: 65986
17	CE08030035	FOR: 65983, 65984, 65985
17	CE08030036	FOR: 65986

CODICE **65983, 65984, 65985, 65986**

DESCRIZIONE: **POMPA DOSIFICATRICE CLASS ON-OFF**



ITALIANO

POS	CODICE	DESCRIZIONE	POS	CODICE	DESCRIZIONE
1	CE08030126	GHIERA FISSAGGIO TUBO	9	CE08030059	PANNELLO COMANDO
2	CE08033111	DISTANCIANTE PER SPURGO	10	CE08031806	RONDELLA E COMANDO POTENZIOMETRO
3	CE08032308	TAPPO SPURGO	11	CE08031729	CONNETTORE DI LIVELLO
4	CE08033102	TESTA COMPLETA 5-10 L.	12	* CE08030531	RONDELLA PISTONE 5L 7KG
5	CE08030116	VALVOLA + SUPPORTO	12	* CE08030037	RONDELLA PISTONE 10L 5KG
5	CE08030117	VALVOLA SILICONE + SUPPORTO	12	* CE08031122	RONDELLA PISTONE 20L 5KG
5	CE08030115	VALVOLA DUTRAL + SUPPORTO	13	CE08033110	CAVO DI ALIMENTAZIONE
6	CE08030113	CORPO RACCORDO + VALVOLA IN VITON	14	CE08031405	CONNETTORE MASCHIO
6	CE08030114	CORPO RACCORDO + VALVOLA IN SILICONE	15	CE08030064	CASSA POMPA CLASS
6	CE08030112	CORPO RACCORDO + VALVOLA IN DUTRAL	16	* CE08030921	ELETTROCALAMITA 2 L. 5KG
7	* CE08030111	O-RING PER TESTA	16	* CE08030118	ELETTROCALAMITA COMPLETA 5L 7KG
7	* CE08030413	O-RING TESTA 20L 5KG	16	* CE08030517	ELETTROCALAMITA 10L 5KG
8	* CE08030119	MEMBRANA COMPLETA	16	* CE08030065	ELETTROCALAMITA 20L 3KG

*** -> SI FACCI A RIFERIMENTO AL FOGLIO DELLE OSSERVAZIONI**

CODICE **65983, 65984, 65985, 65986**

DESCRIZIONE: **POMPA DOSIFICATRICE CLASS ON-OFF**

8	* CE08030429	MEMBRANA COMPLETA 20L 5KG	17	* CE08030035	CIRCUITO ELETTRONICO MA/ADL
17	* CE08030036	CIRCUITO ELETTRONICO MA/ADL 20L-5KG	18	CE08030067	COPRIVENTOLA POMPA

CODICE **65983, 65984, 65985, 65986**

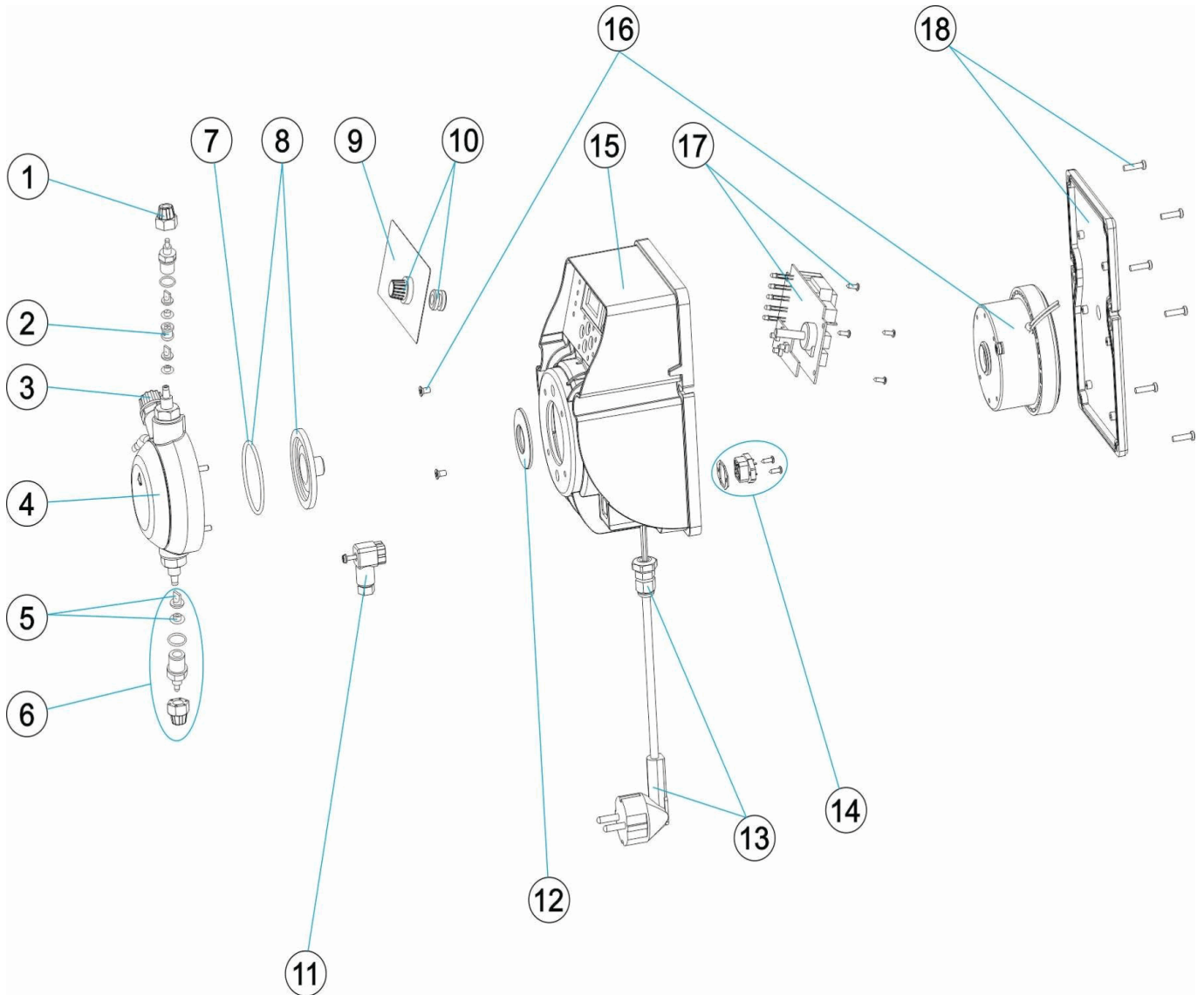
DESCRIZIONE: **POMPA DOSIFICATRICE CLASS ON-OFF**

OSSERVAZIONI

POS	CODICE	OSSERVAZIONI
7	CE08030111	PER: 65983, 65984, 65985
7	CE08030413	PER: 65986
8	CE08030119	PER: 65983, 65984, 65985
8	CE08030429	PER: 65986
12	CE08030531	PER: 65983, 65984
12	CE08030037	PER: 65985
12	CE08031122	PER: 65986
16	CE08030921	PER: 65983
16	CE08030118	PER: 65984
16	CE08030517	PER: 65985
16	CE08030065	PER: 65986
17	CE08030035	PER: 65983, 65984, 65985
17	CE08030036	PER: 65986

CODE **65983, 65984, 65985, 65986**

BESCHREIBUNG: **DOSIERPUMPE CLASS ON-OFF**



DEUTSCH

POS	CODE	BESCHREIBUNG	POS	CODE	BESCHREIBUNG
1	CE08030126	MUTTER BEFESTIGUNG ROHR	9	CE08030059	BEDIENFELD STEUERUNG
2	CE08033111	DISTANZSTÜCK ENTLÜFTUNG	10	CE08031806	UNTERLEGSCHIBE UND STEUERUNG POTENTIO
3	CE08032308	ABLASSTOPFEN KOPFSTÜCK CP STD	11	CE08031729	VERBINDUNGSTÜCK FÜLLSTAND
4	CE08033102	KOPFSTÜCK KOMPLETT 5 - 10 L	12	* CE08030531	KOLBENSCHIBE 5 L 7 KG
5	CE08030116	VENTIL VITON MIT HALTERUNG	12	* CE08030037	KOLBENSCHIBE 10 L 5 KG
5	CE08030117	VENTIL SILIKON MIT HALTERUNG	12	* CE08031122	KOLBENSCHIBE 20 L 5 KG
5	CE08030115	VENTIL DUTRAL MIT HALTERUNG	13	CE08033110	VERSORGUNGSKABEL
6	CE08030113	VENTILSATZ MIT VITON	14	CE08031405	STECKER
6	CE08030114	VENTILSATZ MIT SILIKON	15	CE08030064	PUMPENGEHÄUSE CLASS
6	CE08030112	VENTILSATZ MIT DUTRAL	16	* CE08030921	ELEKTROMAGNET 2 L 5 KG
7	* CE08030111	O-RING KOPFSTÜCK	16	* CE08030118	ELEKTROMAGNET KOMPLETT 5 L 7 KG
7	* CE08030413	O-RING KOPFSTÜCK 20 L 5 KG	16	* CE08030517	ELEKTROMAGNET 10 L 5 KG
8	* CE08030119	KOMPLETTMEMBERAN	16	* CE08030065	ELEKTROMAGNET 20L 3KG

* -> SIEHE ANMERKUNGSBLATT

CODE **65983, 65984, 65985, 65986**

BESCHREIBUNG: **DOSIERPUMPE CLASS ON-OFF**

8	* CE08030429	KOMPLETTMEMBERAN 20 L 5 KG	17	* CE08030035	PLATINE SCHALTKREIS MA/ADL MIT FÜLLSTAND 2
17	* CE08030036	PLATINE SCHALTKREIS MA/ADL MIT FÜLLSTAND 2C	18	CE08030067	ABDECKUNG HINTEN PUMPE

CODE **65983, 65984, 65985, 65986**

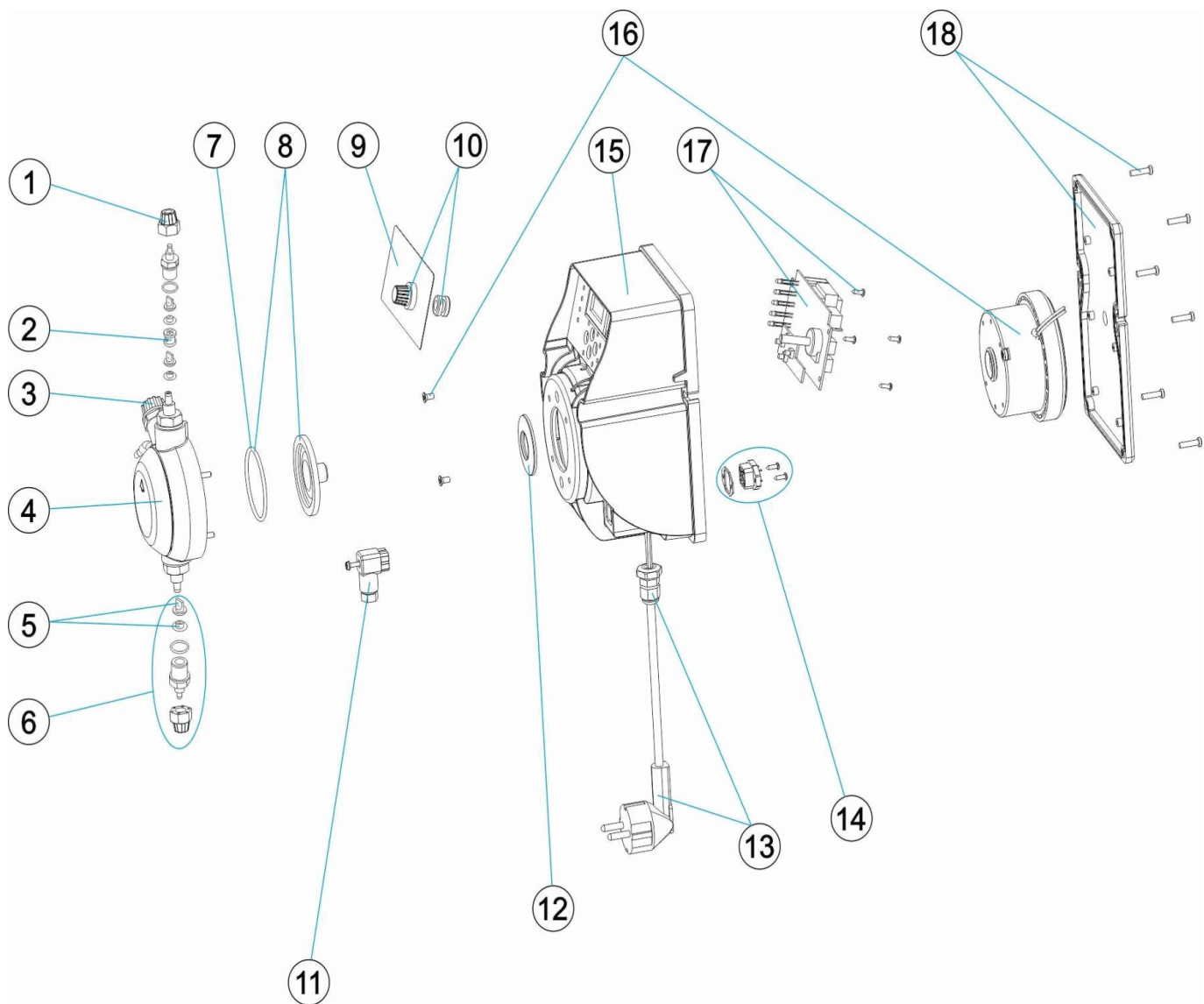
BESCHREIBUNG: **DOSIERPUMPE CLASS ON-OFF**

HINWEISE

POS	CODE	HINWEISE
7	CE08030111	FÜR: 65983, 65984, 65985
7	CE08030413	FÜR: 65986
8	CE08030119	FÜR: 65983, 65984, 65985
8	CE08030429	FÜR: 65986
12	CE08030531	FÜR: 65983, 65984
12	CE08030037	FÜR: 65985
12	CE08031122	FÜR: 65986
16	CE08030921	FÜR: 65983
16	CE08030118	FÜR: 65984
16	CE08030517	FÜR: 65985
16	CE08030065	FÜR: 65986
17	CE08030035	FÜR: 65983, 65984, 65985
17	CE08030036	FÜR: 65986

CODIGO **65983, 65984, 65985, 65986**

DESCRIÇÃO: **BOMBA DOSEADORA CLASS ON-OFF**



PORTUGUES

POS	CODIGO	DESCRIÇÃO	POS	CODIGO	DESCRIÇÃO
1	CE08030126	PORCA SUJEIÇÃO TUBO	9	CE08030059	PAINEL COMANDO
2	CE08033111	DISTANCIADOR DO PURGE	10	CE08031806	ANILHA E COMANDO POTENCIOMETRO
3	CE08032308	TAMPÃO PURGA	11	CE08031729	LIGAÇÃO NIVEL
4	CE08033102	CABEÇAL COMPLETO 5-10 L.	12	* CE08030531	ANILHA PISTON 5L 7KG
5	CE08030116	VÁLVULA VITON + SUPORTE	12	* CE08030037	ANILHA PISTON 10L 5KG
5	CE08030117	VÁLVULA SILICONE + SUPORTE	12	* CE08031122	ANILHA PISTON 20L 5KG
5	CE08030115	VÁLVULA DUTRAL + SUPORTE	13	CE08033110	CABO ALIMENTAÇÃO
6	CE08030113	CORPO RACORD + VITON	14	CE08031405	LIGAÇÃO MACHO
6	CE08030114	CORPO RACORD + SILICONE	15	CE08030064	CAIXA BOMBA CLASS
6	CE08030112	CORPO RACORD + DUTRAL	16	* CE08030921	ELECTROIMAN 2 L. 5KG
7	* CE08030111	JUNTA TORICA CABEÇAL	16	* CE08030118	ELECTROIMAN COMPLETO 5L 7KG
7	* CE08030413	JUNTA TORICA CABEÇAL 20L 5KG	16	* CE08030517	ELECTROIMAN 10L 5KG
8	* CE08030119	MEMBRANA COMPLETA	16	* CE08030065	ELECTROIMAN 20L 3KG

* -> VEJA A FICHA DE OBSERVAÇÕES

CODIGO **65983, 65984, 65985, 65986**

DESCRIÇÃO: **BOMBA DOSEADORA CLASS ON-OFF**

8	* CE08030429	MEMBRANA COMPLETA 20L 5KG	17	* CE08030035	CIRCUITO ELECTRONICO MA/ADL
17	* CE08030036	CIRCUITO ELECTRONICO MA/ADL 20L-5KG	18	CE08030067	TAMPA TRASEIRA BOMBA

CODIGO **65983, 65984, 65985, 65986**DESCRIÇÃO: **BOMBA DOSEADORA CLASS ON-OFF****OBSERVAÇÕES**

POS	CODIGO	OBSERVAÇÕES
7	CE08030111	PARA: 65983, 65984, 65985
7	CE08030413	PARA: 65986
8	CE08030119	PARA: 65983, 65984, 65985
8	CE08030429	PARA: 65986
12	CE08030531	PARA: 65983, 65984
12	CE08030037	PARA: 65985
12	CE08031122	PARA: 65986
16	CE08030921	PARA: 65983
16	CE08030118	PARA: 65984
16	CE08030517	PARA: 65985
16	CE08030065	PARA: 65986
17	CE08030035	PARA: 65983, 65984, 65985
17	CE08030036	PARA: 65986