

CONNECTION OPTIONS VICTORIA PLUS SILENT VS MANUAL
MANUAL OPCIONES DE CONEXIONADO VICTORIA PLUS SILENT VS



CE

ASTRALPOOL 

VICTORIA PLUS SILENT VS

English - CONNECTION OPTIONS VICTORIA PLUS SILENT VS MANUAL
INSTALLATION AND GENERAL MAINTENANCE MANUAL

A	HMI WALL MOUNTED	3 - 6
B	HMI BATTERY CHANGE	7
C	POWER CORD REPLACEMENT	7 - 8
D	AUXILIARY INPUT OUTPUT CONNECTIONS	9 -10

Español - MANUAL OPCIONES DE CONEXIONADO VICTORIA PLUS SILENT VS
MANUAL DE INSTALACIÓN Y MANTENIMIENTO GENERAL

A	HMI MONTADO EN PARED	3 - 6
B	CAMBIAR PILA DEL HMI	7
C	SUSTITUCIÓN CABLE ALIMENTACIÓN	7 - 8
D	CONEXIONES ENTRADAS SALIDAS AUXILIARES	9 -10

A HMI WALL MOUNTED / HMI MONTADO EN PARED

1



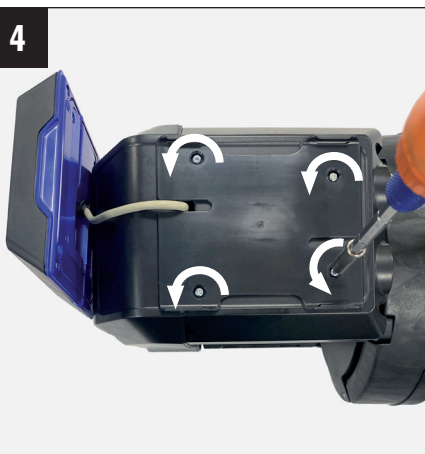
2



3

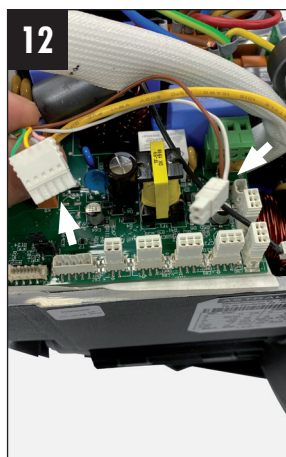
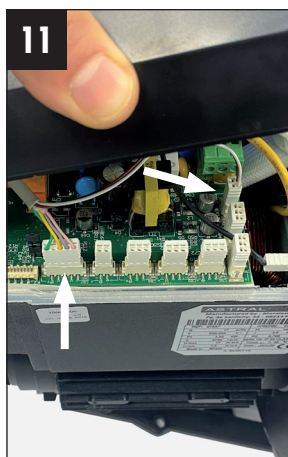
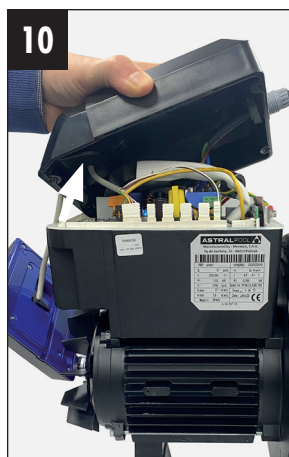
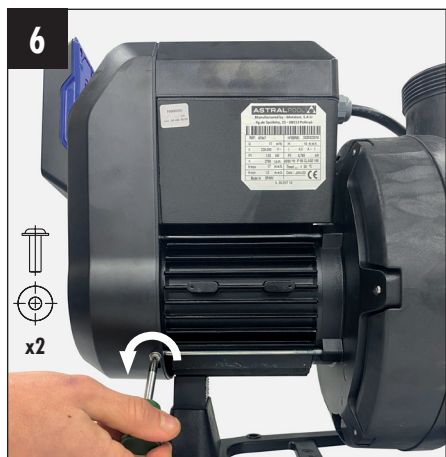


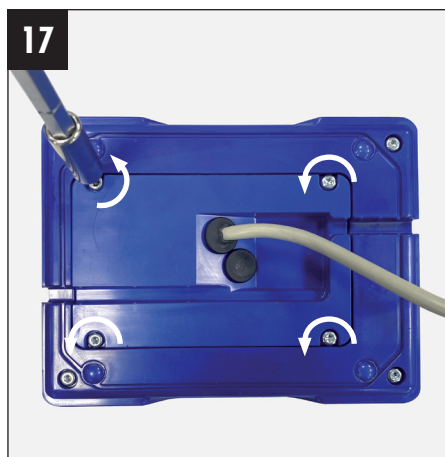
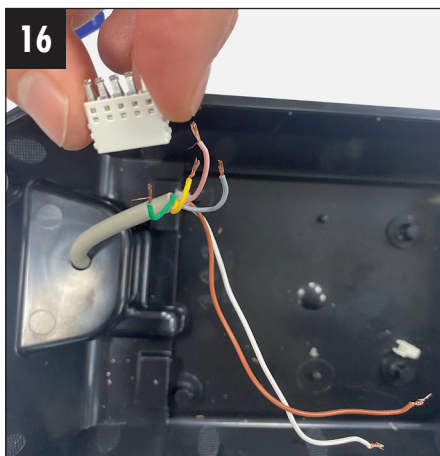
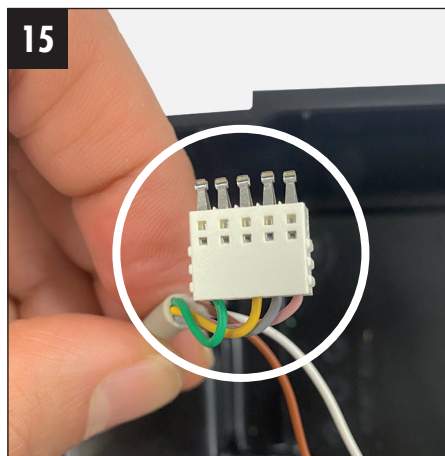
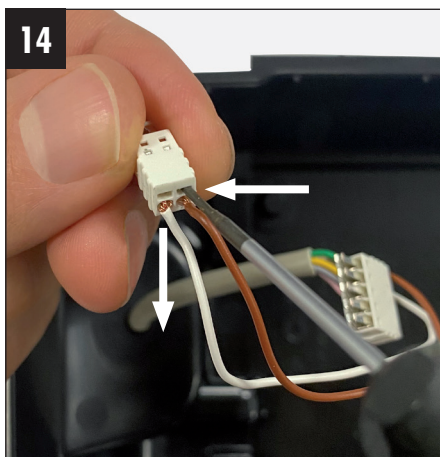
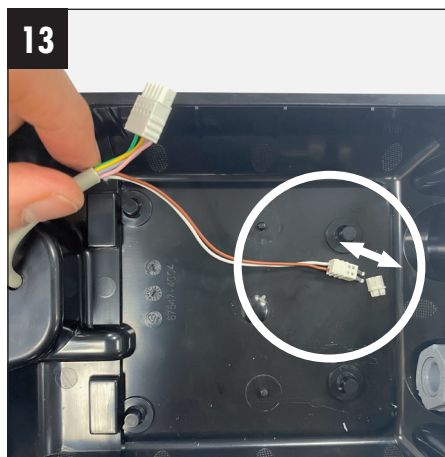
4

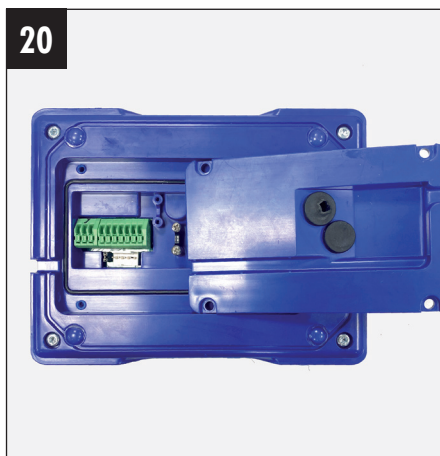
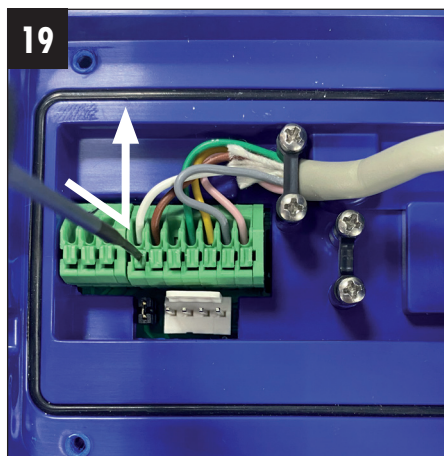


5





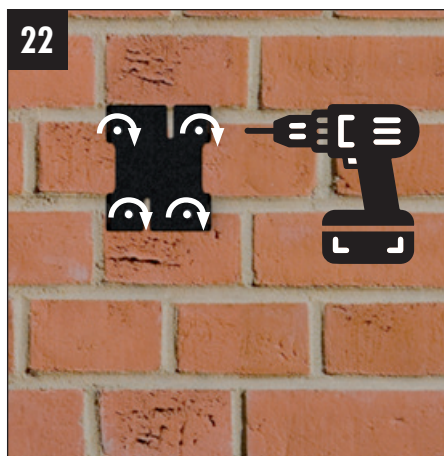




21

**Put on the new cable
(max 10 m. long) following the
reverse order from 20 to 6**

**Montar nuevo cable
(máx 10 m. long.) siguiendo el
orden inverso del 20 al 6**



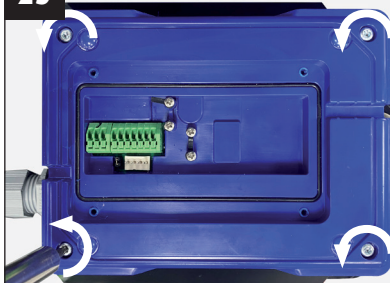
B HMI BATTERY CHANGE / CAMBIAR PILA DEL HMI

24

Follow steps:
3 + 17 + 18 + 19 + 20

Seguir pasos:
3 + 17 + 18 + 19 + 20

25



26



27

Follow reverse order
26 to 24

Seguir orden inverso
del 26 al 24

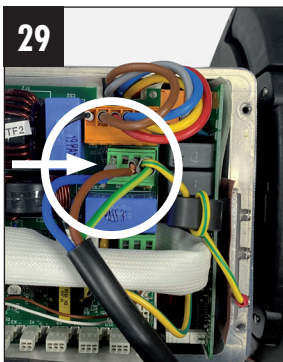
C POWER CORD REPLACEMENT / SUSTITUCIÓN CABLE ALIMENTACIÓN

28

Follow steps
from 3 to 12

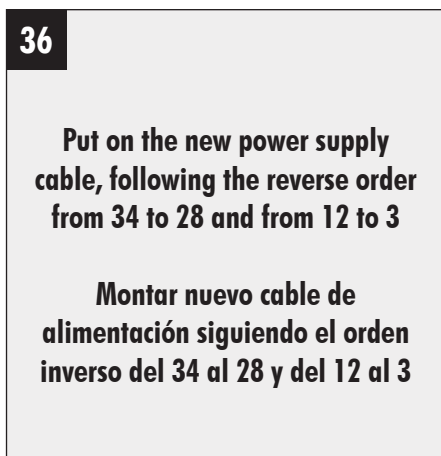
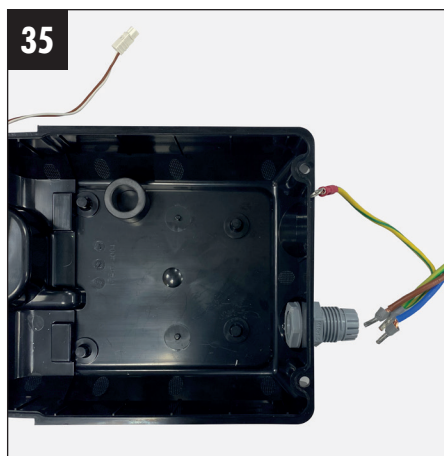
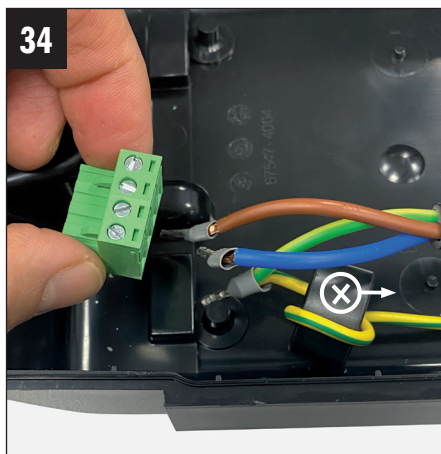
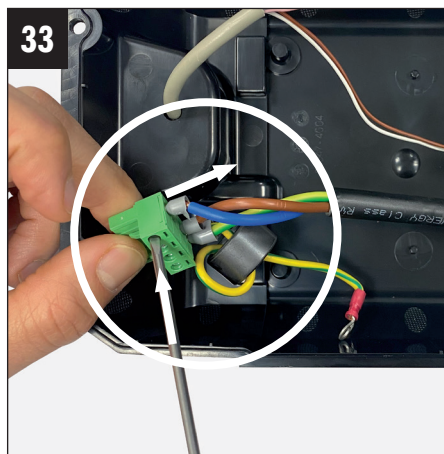
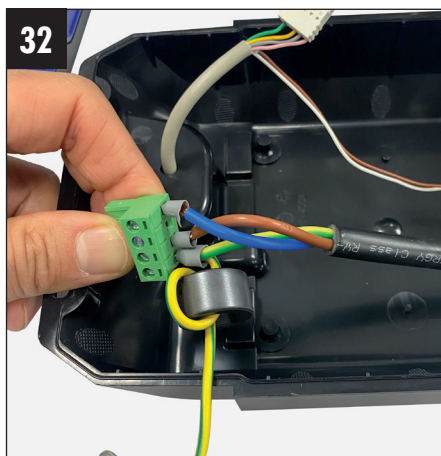
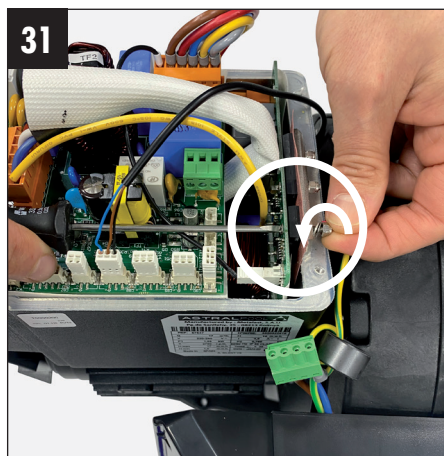
Seguir pasos
del 3 al 12

29



30





Put on the new power supply cable, following the reverse order from 34 to 28 and from 12 to 3

Montar nuevo cable de alimentación siguiendo el orden inverso del 34 al 28 y del 12 al 3

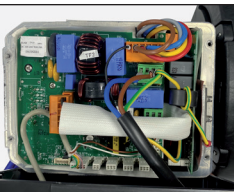
D

AUXILIARY INPUT OUTPUT CONNECTIONS CONEXIONES ENTRADAS SALIDAS AUXILIARES

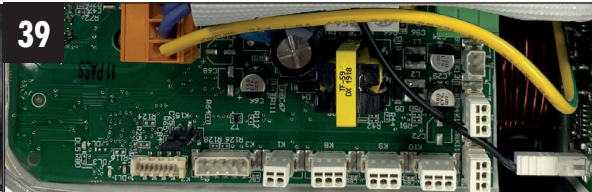
37

Follow steps from 3 to 12 / Seguir pasos del 3 al 12

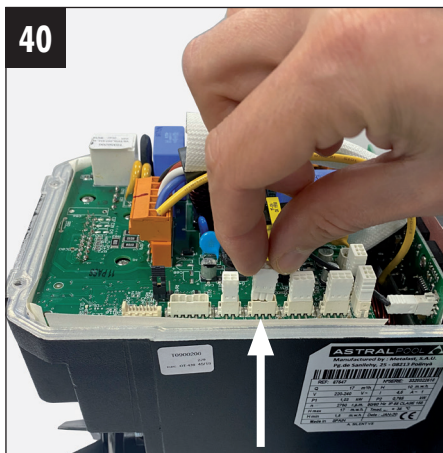
38



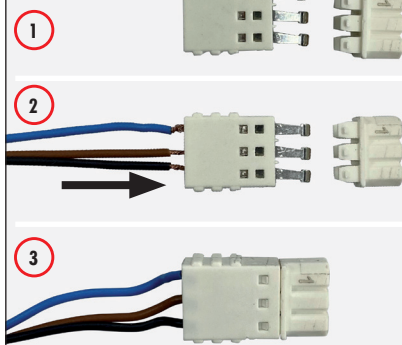
39



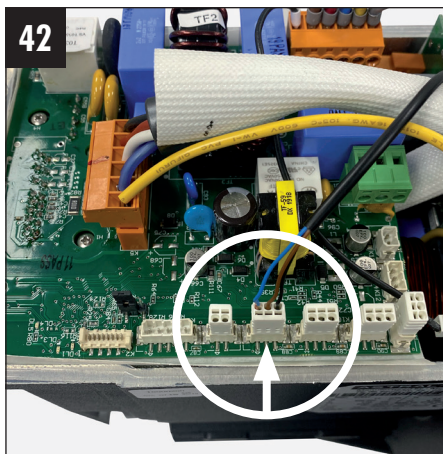
40



41



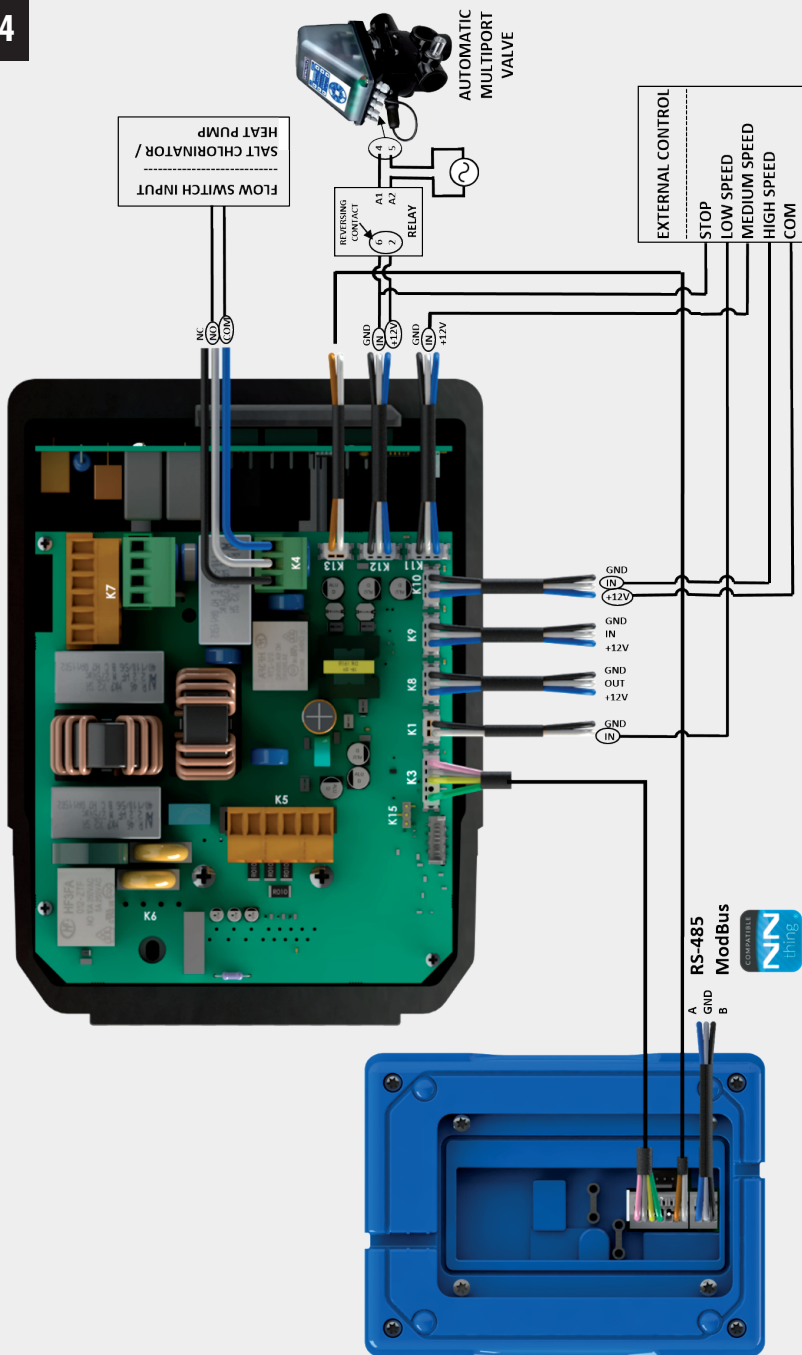
42



43

Follow reverse order
from 12 to 3

Seguir orden inverso
del 12 al 3



INVERTER CARD CONNECTORS:

CODE	TYPE	FUNCTION	PINS DESCRIPTION
K1	DIGITAL INPUT* PRIORITY: 1ST — STOP 2ND — HIGH SPEED 3RD — MEDIUM SPEED 4TH — LOW SPEED *SEE DIGITAL INPUTS TABLE IN CHAPTER 7 CONTROL PANEL MANUAL	CHANGE TO LOW SPEED	GND IN (INPUT SIGNAL "IS": IF IS = 1 THEN LOW SPEED)
K11		CHANGE TO MEDIUM SPEED	GND IN (INPUT SIGNAL "IS": IF IS = 1 THEN MEDIUM SPEED) +12V (COM)
K10		CHANGE TO HIGH SPEED	GND IN (INPUT SIGNAL "IS": IF IS = 1 THEN HIGH SPEED) +12V (COM)
K12		PUMP STOP	GND IN (INPUT SIGNAL "IS": IF IS = 1 THEN PUMP STOP) +12V (COM)
K4	ANALOGIC OUTPUT	PUMP STATUS ON/OFF	NC (OUTPUT SIGNAL "OS": OS = 1 IF PUMP IS ON → RPM ≥ 1000 OS = 0 IF PUMP IS OFF) NO (OUTPUT SIGNAL "OS": OS = 1 IF PUMP IS OFF OS = 0 IF PUMP IS ON → RPM ≥ 1000) COM
K6	POWER SUPPLY	230 V II SUPPLY	GROUND PHASE PIN NOT USED NEUTRAL
K8	DIGITAL OUTPUT	NOT AVAILABLE	GND OUT +12V (COM)
K9	ANALOGIC INPUT	NOT AVAILABLE	GND IN +12V (COM)
K15	ANALOGIC INPUT	NOT AVAILABLE	
K3 / K13	CONNECTION TO HMI		
K5	CONNECTION TO THREE PHASE MOTOR		
K7	CONNECTION TO PFC		

Cod. 67547-0010 / Rev. 00

- We reserve the right to change all or part of the features of the articles or contents of this document, without prior notice.
- Nous nous réservons le droit de modifier totalement ou en partiellement les caractéristiques de nos articles ou le contenu de ce document sans préavis.
- Nos reservamos el derecho de cambiar total o parcialmente las características de nuestros artículos o contenido de este documento sin previo aviso.
- Ci riserviamo il diritto di cambiare totalmente o parzialmente le caratteristiche tecniche dei nostri prodotti ed il contenuto di questo documento senza nessun preavviso.
- Wir behalten uns das Recht vor, die Merkmale unserer Produkte und den Inhalt dieser Beschreibung ohne vorherige Ankündigung ganz oder teilweise zu ändern.
- Reservamo-nos o direito de alterar, na totalidade ou parcialmente as características dos nossos artigos ou o conteúdo deste documento sem aviso prévio.