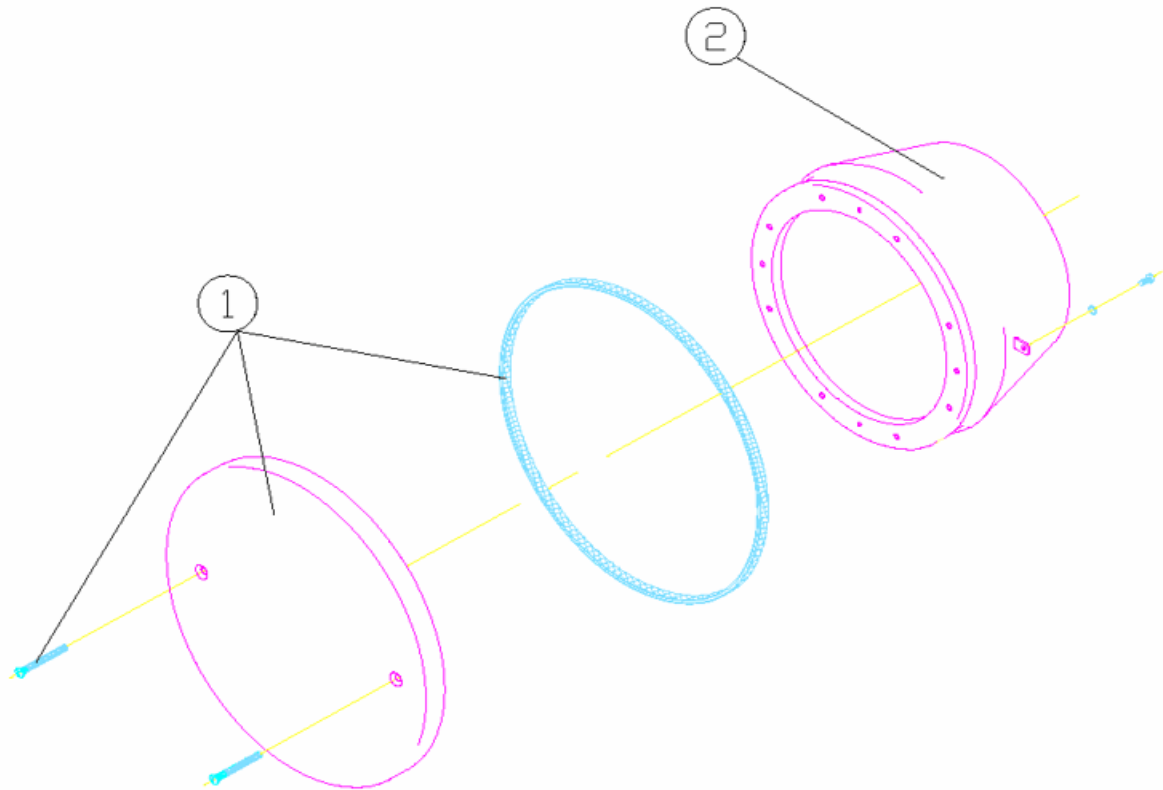


CODE **19987**

BESCHREIBUNG: **ANSAUGDÜSE VORGEFERTIGTES FÜR WASSER-SPIELE**

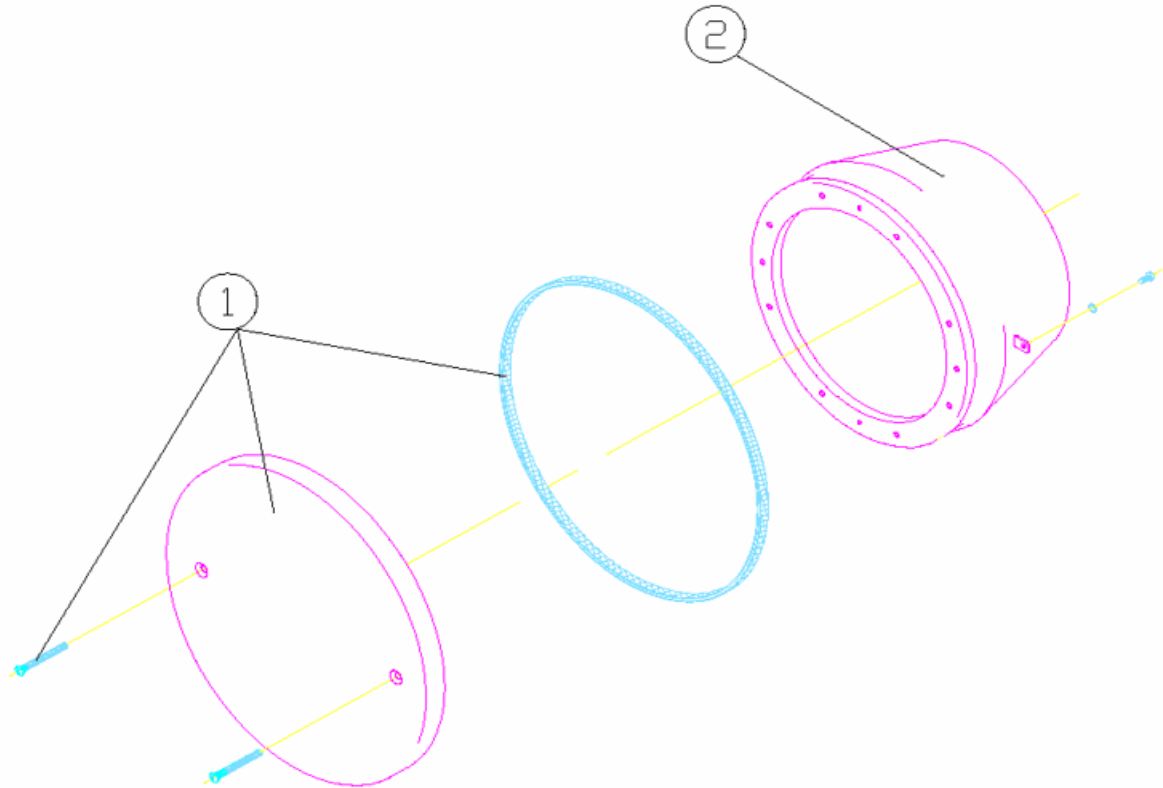


**DEUTCHE**

POS	CODE	BESCHREIBUNG	POS	CODE	BESCHREIBUNG
1	4402022101	DECKEL SAUGANSCHLUSS	2	05568R0310	GEHÄUSE ANSAUGDÜSE

CODE **19987**

DESCRIPTION: **SUCTION INLET FOR WATER GAMES**

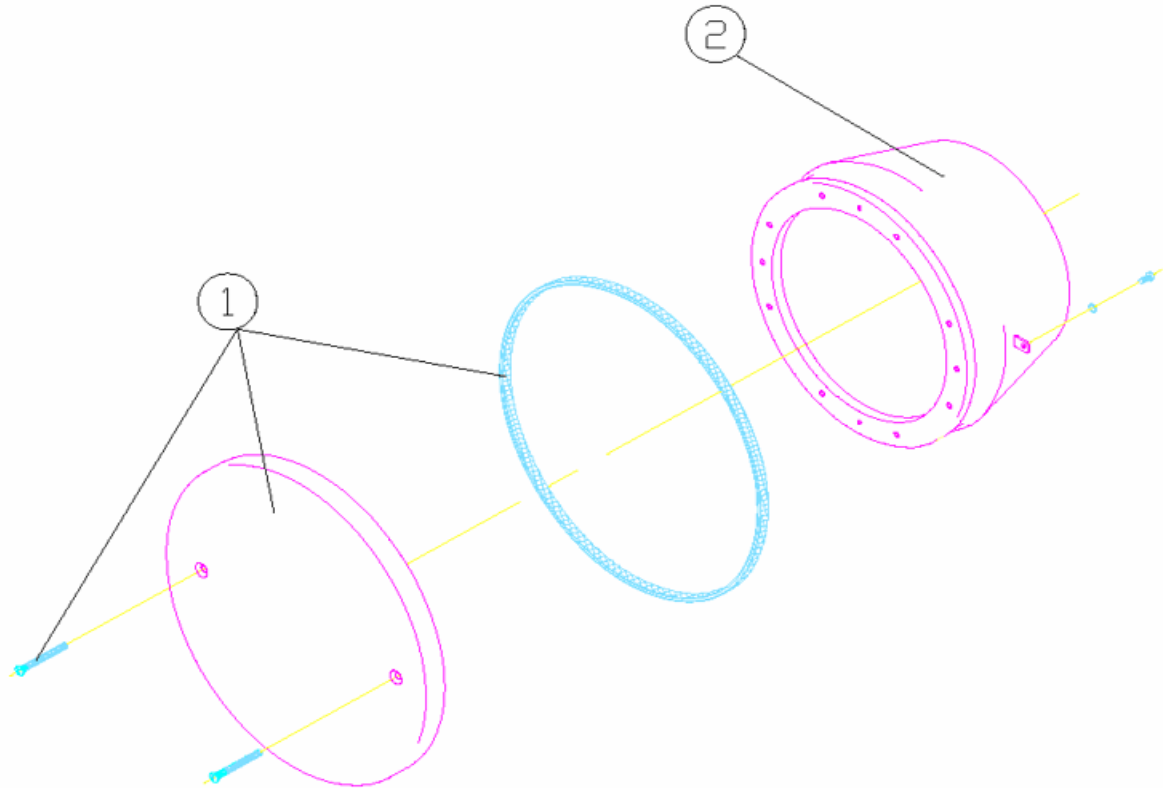


**ENGLISH**

POS	CODE	DESCRIPTION	POS	CODE	DESCRIPTION
1	4402022101	SUCTION INLET COVER	2	05568R0310	BODY SUCTION NOZZLE

CODIGO **19987**

DESCRIPCION: **BOQUILLA ASPIRACION PARA JUEGOS**

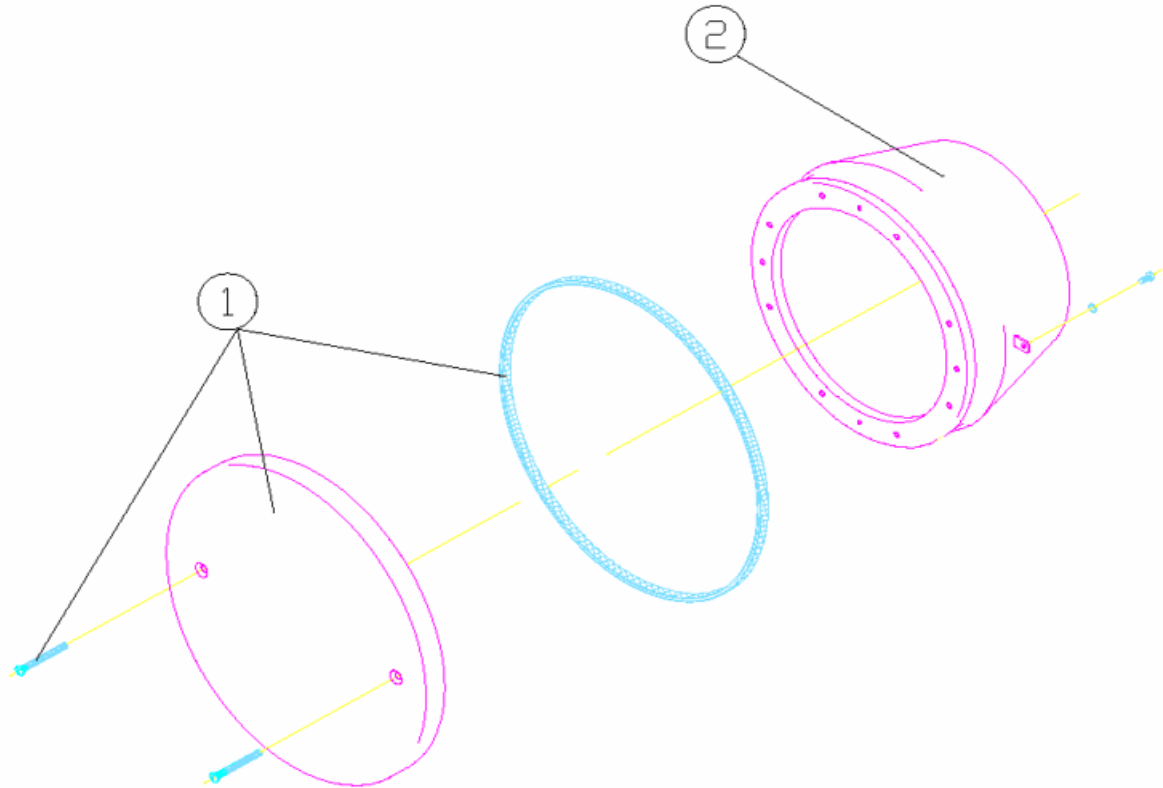


**ESPAÑOL**

POS	CODIGO	DESCRIPCION	POS	CODIGO	DESCRIPCION
1	4402022101	TAPA BOQUILLA ASPIRACION	2	05568R0310	CUERPO BOQUILLA ASPIRACION

CODE **19987**

DESCRIPTION: **BOUCHE D'ASPIRATION POUR LES JEUX D'EAU**

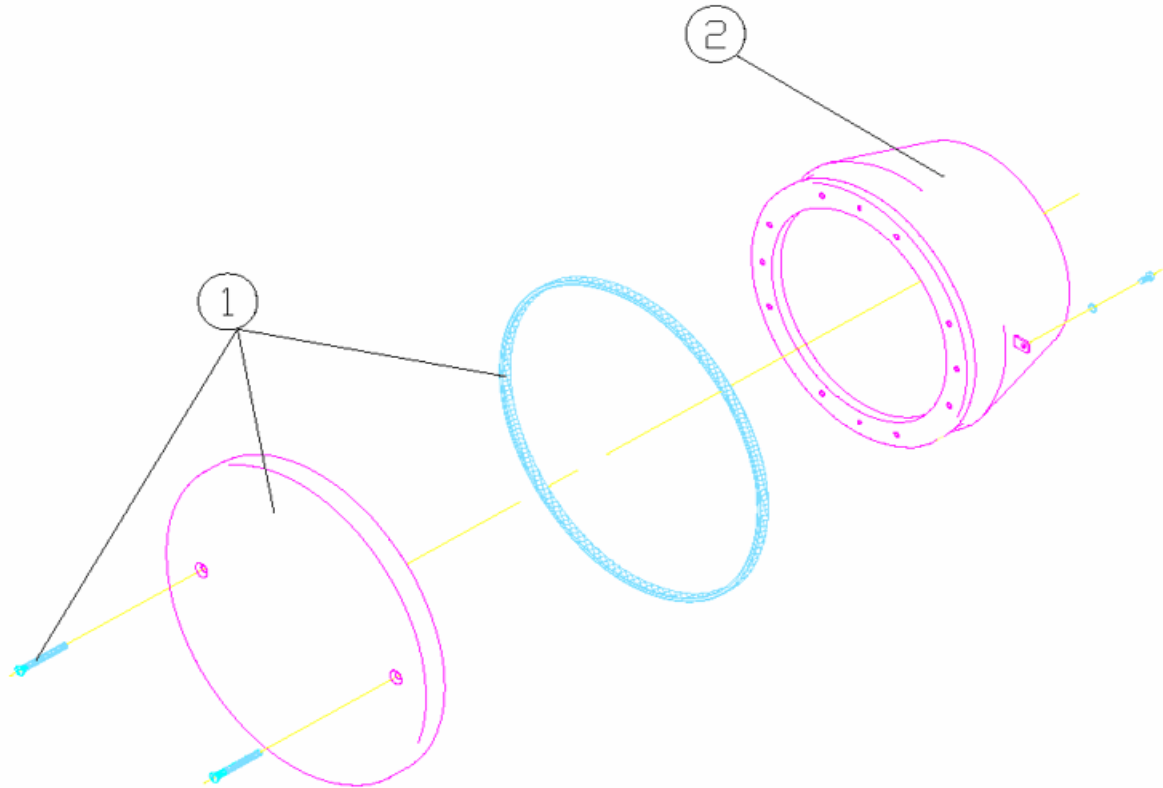


**FRANCAIS**

POS	CODE	DESCRIPTION	POS	CODE	DESCRIPTION
1	4402022101	COUVERCLE BOUCHE ASPIRATION	2	05568R0310	CORPS BOUCHE ASPIRATION

CODICE **19987**

DESCRIZIONE: **BOCCHETTA ASPIRAZIONE PER I GIOCHI D'ACQUA**

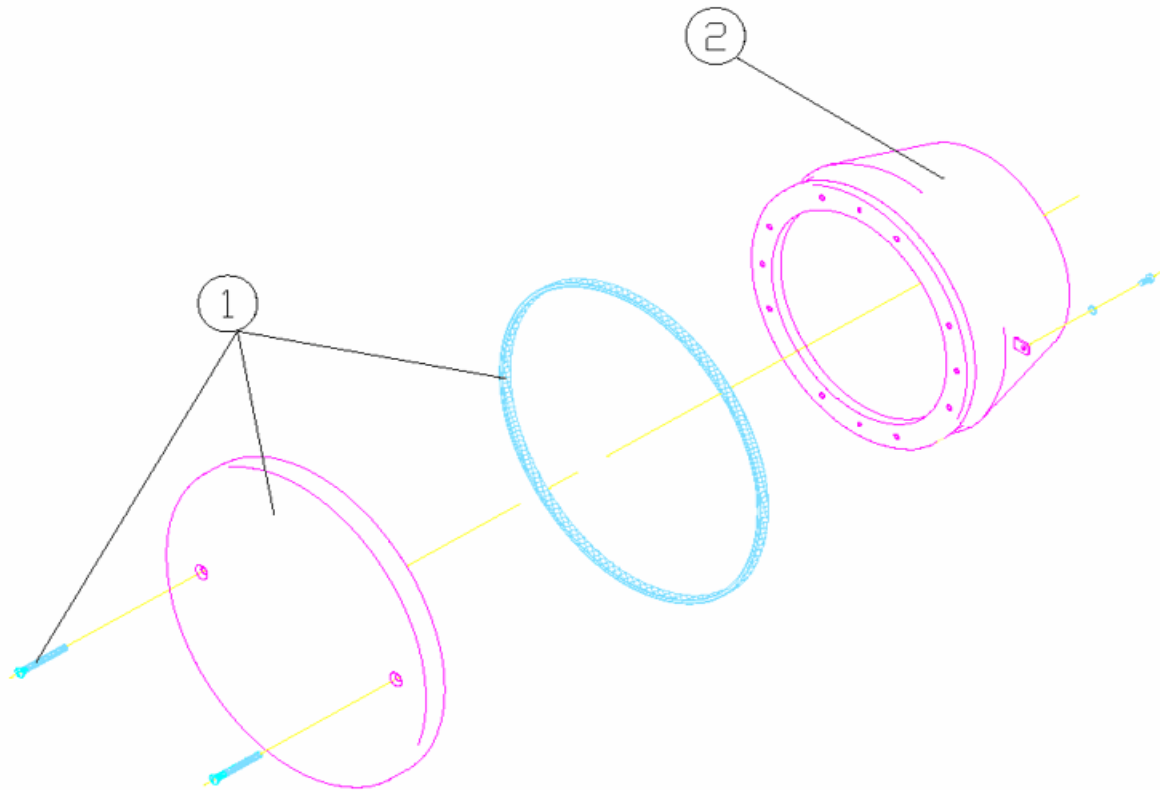


**ITALIANO**

POS	CODICE	DESCRIZIONE	POS	CODICE	DESCRIZIONE
1	4402022101	COPERCHIO BOCCHETTA ASPIRAZIONE	2	05568R0310	CORPO BOCCHETTA D'ASPIRAZIONE

CODIGO **19987**

DESCRIÇÃO: **BOQUILHA ASPIRAÇÃO PARA JOGOS DE ÁGUA**



**PORTUGUES**

POS	CODIGO	DESCRIÇÃO	POS	CODIGO	DESCRIÇÃO
1	4402022101	TAMPA BOQUILHA ASPIRAÇÃO	2	05568R0310	CORPO BOQUILHA ASPIRAÇÃO