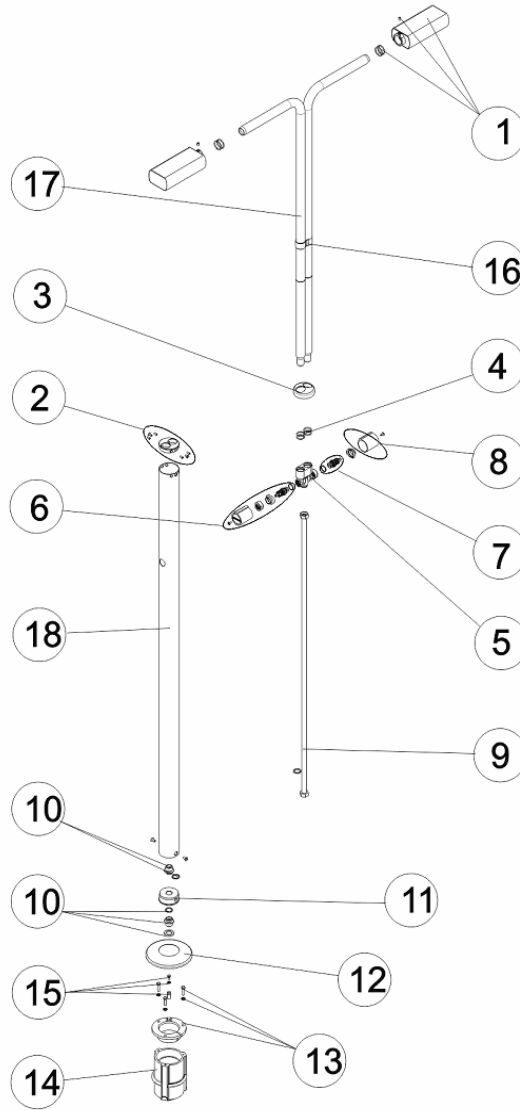


CODE **59775**

BESCHREIBUNG: **DUSCHE ANGEL 2 DUSCHKÖPFE 2 VENTILE**



DEUTSCH

POS	CODE	BESCHREIBUNG	POS	CODE	BESCHREIBUNG
1	4401040226	SPRENGER RECHTECKIG	10	4401040234	"ANSCHLUSS AUSGANG 1/2" M. - 1/2 M."
2	4401040227	TOP 2 FÜHRUNGSRARME	11	4401040233	UNTEN VIELFÄLTIGE DUSCHE
3	4401040707	BLENDE OBEN DOPPELDUSCHE	12	4401040507	BLENDE UNTEN DUSCHE
4	4401040228	O-RING	13	4401042810	BEFESTIGUNGSRING VERANKERUNG DUSCHE D 63
5	4401040229	2-WEGE-VERTEILER 2-BRAZOS	14	4401042811	VERANKERUNG DUSCHE
6	4401040230	SET GRIFF + VENTILACHSE	15	4401040903	ERDUNG
7	4401040019	ACHSE VENTIL	16	4401040710	DUSCHARM HALTER DOPPELDUSCHE
8	4401040231	GRIFF ZYLINDERFÖRMIG	17	59775R0002	DUSCHARM
9	4401040232	"FLEXIBLER SCHLAUCH 1/2" H. - 1/2" H. DN11 L=1100"	18	59775R0001	DUSCHSHEINHEIT

CODE **59775**

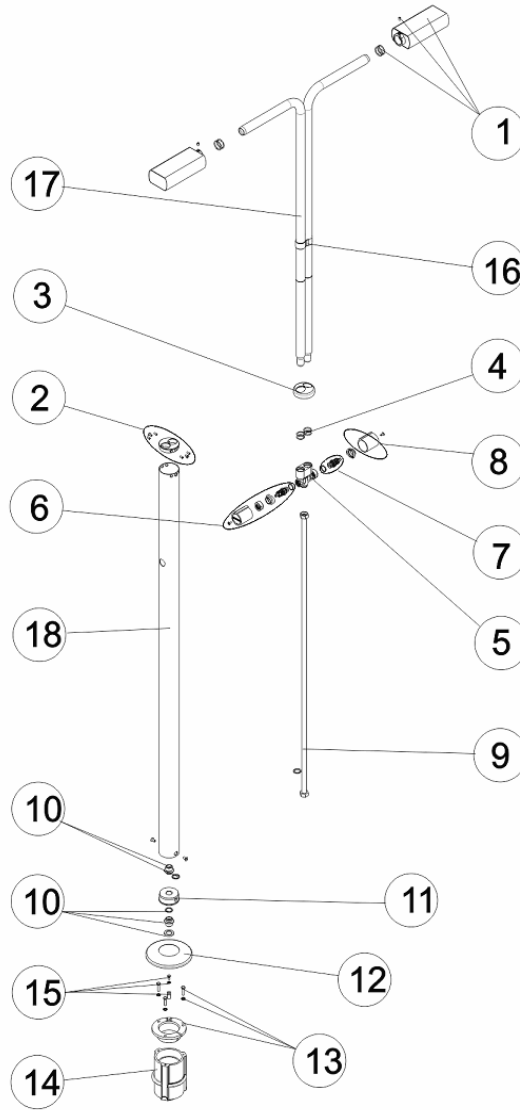
BESCHREIBUNG: **DUSCHE ANGEL 2 DUSCHKÖPFE 2 VENTILE**

HINWEISE

POSICIÓN	PIEZA	OBSERVACIÓN

CODE **59775**

DESCRIPTION: **SHOWER ANGEL 2 SPRINKLERS 2 VALVES**



ENGLISH

POS	CODE	DESCRIPTION	POS	CODE	DESCRIPTION
1	4401040226	RECTANGULAR NOZZLE	10	4401040234	"1/2" M. - 1/2 M. OUTLET CONNECTION"
2	4401040227	GUIDE TOP 2 ARMS	11	4401040233	BOTTOM MANIFOLD SHOWER
3	4401040707	2 ARM SUPPORT ESCUTCHEON PLATE	12	4401040507	BOTTOM ESCUTCHEON PLATE
4	4401040228	'O' RING	13	4401042810	SHOWER ANCHOR D 63
5	4401040229	2-WAY MANIFOLD 2 BRAZOS	14	4401042811	SHOWER ANCHORING FIXTURE
6	4401040230	KNOB + VALVE SHAFT UNIT	15	4401040903	EARTH CONNECTION
7	4401040019	VALVE SHAFT	16	4401040710	SHOWER ARMS HOLDER
8	4401040231	CYLINDRICAL KNOB	17	59775R0002	SHOWER ARM
9	4401040232	"1/2" H. - 1/2" H. DN11 L=1100 CABLE"	18	59775R0001	SHOWER UNIT

CODE **59775**

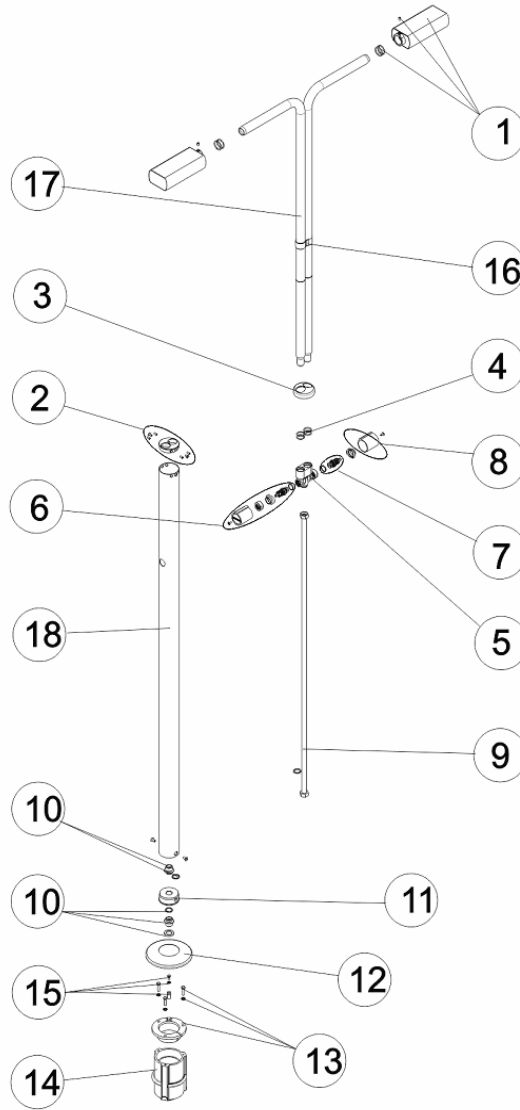
DESCRIPTION: **SHOWER ANGEL 2 SPRINKLERS 2 VALVES**

OBSERVATIONS

POSICIÓN	PIEZA	OBSERVACIÓN

CODIGO **59775**

DESCRIPCION: **DUCHA ANGEL 2 ROCIADORES 2 VALVULA**



ESPAÑOL

POS	CODIGO	DESCRIPCION	POS	CODIGO	DESCRIPCION
1	4401040226	ROCIADOR RECTANGULAR	10	4401040234	CONEXION SALIDA 1/2" M. - 1/2 M.
2	4401040227	GUIA SUPERIOR 2 BRAZOS	11	4401040233	COLECTOR INFERIOR DUCHA
3	4401040707	TAPETA EMBELL. SUP. 2 BRAZOS	12	4401040507	TAPETA EMBELLECEDORA INFERIOR
4	4401040228	JUNTA TORICA	13	4401042810	FLJACION ANCLAJE DUCHA D 63
5	4401040229	COLECTOR 2 VALVULAS 2 BRAZOS	14	4401042811	CUERPO ANCLAJE DUCHA
6	4401040230	CJTO. POMO + EJE VALVULA	15	4401040903	TOMA DE TIERRA
7	4401040019	EJE VALVULA	16	4401040710	TIRANTE BRAZOS DUCHA
8	4401040231	POMO CILINDRICO	17	59775R0002	BRAZO DUCHA
9	4401040232	LATIGUILLO 1/2" H. - 1/2" H. DN11 L=1100	18	59775R0001	CUERPO DUCHA 2 VALVULAS

CODIGO **59775**

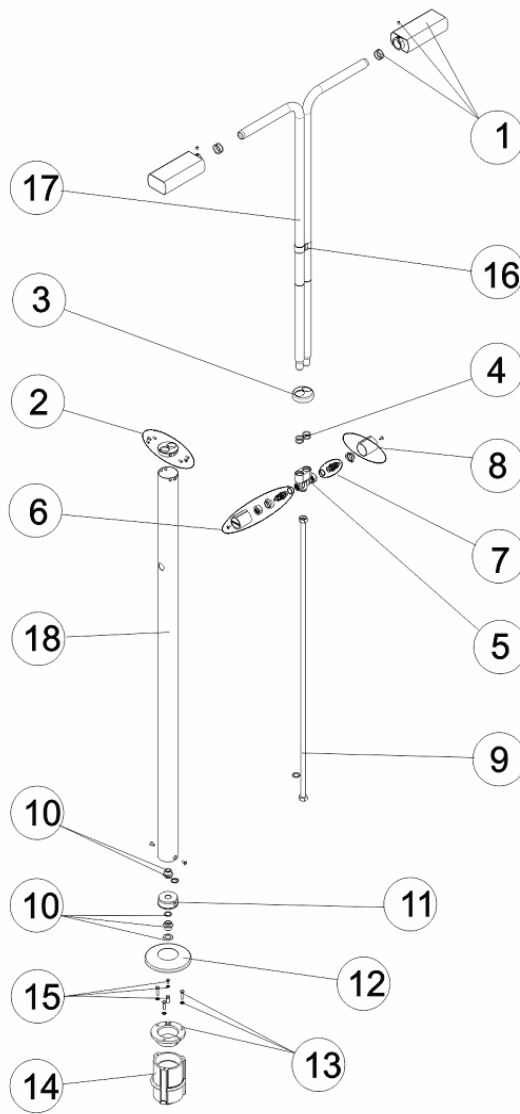
DESCRIPCION: **DUCHA ANGEL 2 ROCIADORES 2 VALVULA**

OBSERVACIONES

POSICIÓN	PIEZA	OBSERVACIÓN

CODE **59775**

DESCRIPTION: **DOUCHE ANGEL 2 POMMEAUX 2 ROBINETS**



FRANCAIS

POS	CODE	DESCRIPTION	POS	CODE	DESCRIPTION
1	4401040226	JET RECTANGULAIRE	10	4401040234	"RACCORD SORTIE 1/2" M. - 1/2 M."
2	4401040227	GUIDE SUPERIEUR 2 BRAS	11	4401040233	COLLECTEUR FOND DOUCHE
3	4401040707	ENJOLIVEUR SUPERIEUR 2 BRAS.	12	4401040507	ENJOLIVEUR INFERIEUR
4	4401040228	JOINT TORIQUE	13	4401042810	FIXATION ANCRAGE DOUCHE D 63
5	4401040229	MANIFOLD 2 VOIES 2 BRAZOS	14	4401042811	CORPS D'ANCRAGE DE DOUCHE
6	4401040230	ENSEMBLE POMMEAU + AXE VANNE	15	4401040903	PRISE DE TERRE
7	4401040019	AXE VANNE	16	4401040710	COLLIER DE MAINTIEN EXTERIEUR DE TUBE
8	4401040231	POMMEAU CYLINDRIQUE	17	59775R0002	BRAS DOUCHE
9	4401040232	"FLEXIBLE 1/2" H. - 1/2" H. DN11 L=1100"	18	59775R0001	CORPS DOUCHE

CODE **59775**

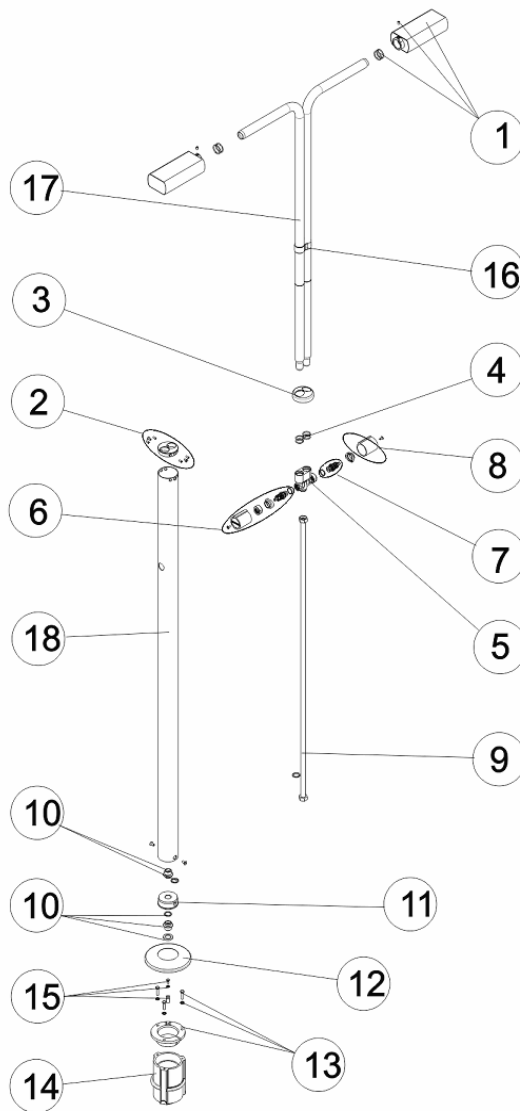
DESCRIPTION: **DOUCHE ANGEL 2 POMMEAUX 2 ROBINETS**

OBSERVATIONS

POSICIÓN	PIEZA	OBSERVACIÓN

CODICE **59775**

DESCRIZIONE: **DOCCIA ANGEL 2 SOFFIONI 2 VALVOLE**



ITALIANO

POS	CODICE	DESCRIZIONE	POS	CODICE	DESCRIZIONE
1	4401040226	SPRUZZATORE RETTANGOLARE	10	4401040234	"CONNESSIONE D'USCITA 1/2" M. - 1/2 M."
2	4401040227	GUIDA SUPERIORE A 2 BRACCI	11	4401040233	COLLETTORE INFERIORE COCCIA
3	4401040707	COPRIFLANGIA SUPERIORE 2 BRACCI	12	4401040507	COPRIFLANGIA INFERIORE
4	4401040228	O-RING	13	4401042810	FISSAGGIO ANCORAGGIO DOCCIA D 63
5	4401040229	COLLETTORE 2 VIE 2 BRAZOS	14	4401042811	CORPO ANCORAGGIO DOCCIA
6	4401040230	SET MANOPOLA + ASSE VALVOLA	15	4401040903	PRESA A TERRA
7	4401040019	ASSE VALVOLA	16	4401040710	TIRANTE BRACCIO DOCCIA
8	4401040231	POMELLO CICLINDRICO	17	59775R0002	BRACCIO DOCCIA
9	4401040232	"CAVETTO 1/2" H. - 1/2" H. DN11 L=1100"	18	59775R0001	CORPO DOCCIA

CODICE **59775**

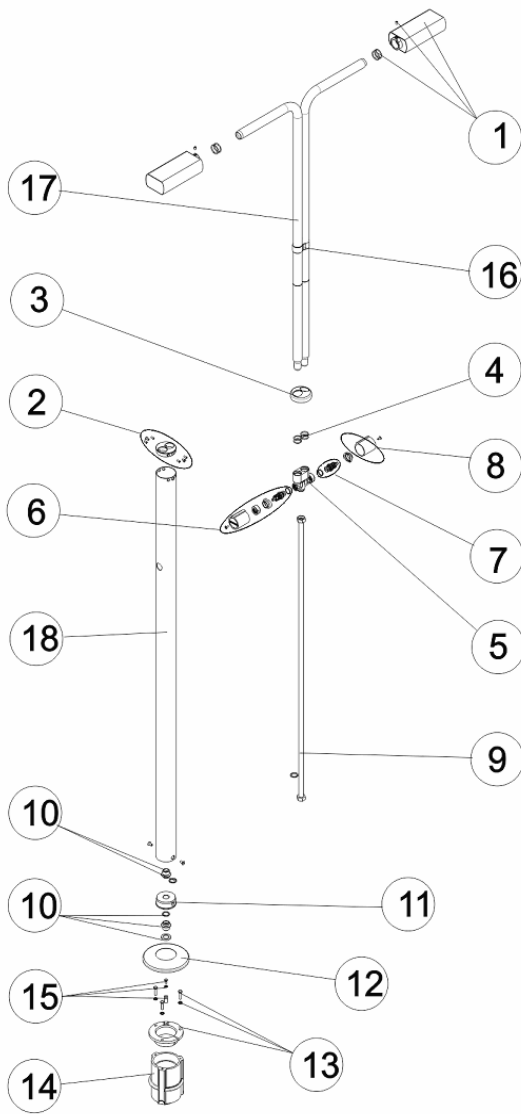
DESCRIZIONE: **DOCCIA ANGEL 2 SOFFIONI 2 VALVOLE**

OSSERVAZIONI

POSICIÓN	PIEZA	OBSERVACIÓN

CODIGO **59775**

DESCRIÇÃO: **DUCHE ANGEL 2 DIFUSORES 2 VÁLVULA**



PORTUGUES

POS	CODIGO	DESCRIÇÃO	POS	CODIGO	DESCRIÇÃO
1	4401040226	DIFUSOR RECTANGULAR	10	4401040234	"CONEXÃO SAÍDA 1/2" M. - 1/2 M."
2	4401040227	GUIA TOP 2 BRAÇOS	11	4401040233	COLECTOR INFERIOR CHUVEIRO
3	4401040707	TAMPA EMBELEZADORA SUP. 2 BRAÇOS	12	4401040507	TAMPA EMBELEZADORA INFERIOR
4	4401040228	JUNTA TÓRICA	13	4401042810	FIXAÇÃO ÂNCORA CHUVEIRO D 63
5	4401040229	COLECTOR 2 VIAS 2 BRAZOS	14	4401042811	CORPO ÂNCORA CHUVEIRO
6	4401040230	CJTO. PUXADOR + EIXO VÁLVULA	15	4401040903	LIGAÇÃO A TERRA
7	4401040019	EIXO VÁLVULA	16	4401040710	TIRANTE BRAÇOS CHUVEIRO
8	4401040231	MAÇANETA CILÍNDRICA	17	59775R0002	BRAÇO DUCHE
9	4401040232	"MANGA 1/2" H. - 1/2" H. DN11 L=1100"	18	59775R0001	CORPO DE CHUVEIRO

CODIGO **59775**DESCRIÇÃO: **DUCHE ANGEL 2 DIFUSORES 2 VÁLVULA****OBSERVAÇÕES**

POSICIÓN PIEZA

OBSERVACIÓN