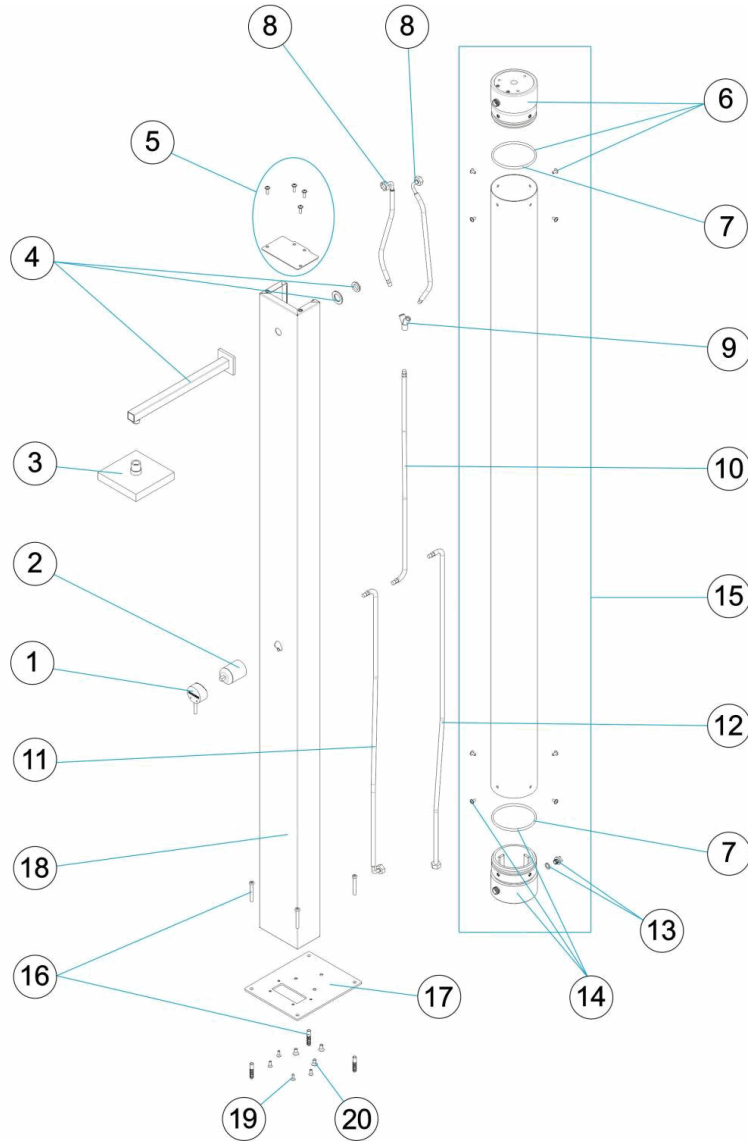


CODIGO **53873**

DESCRIPCION: **DUCHA SOLAR NIAGARA**

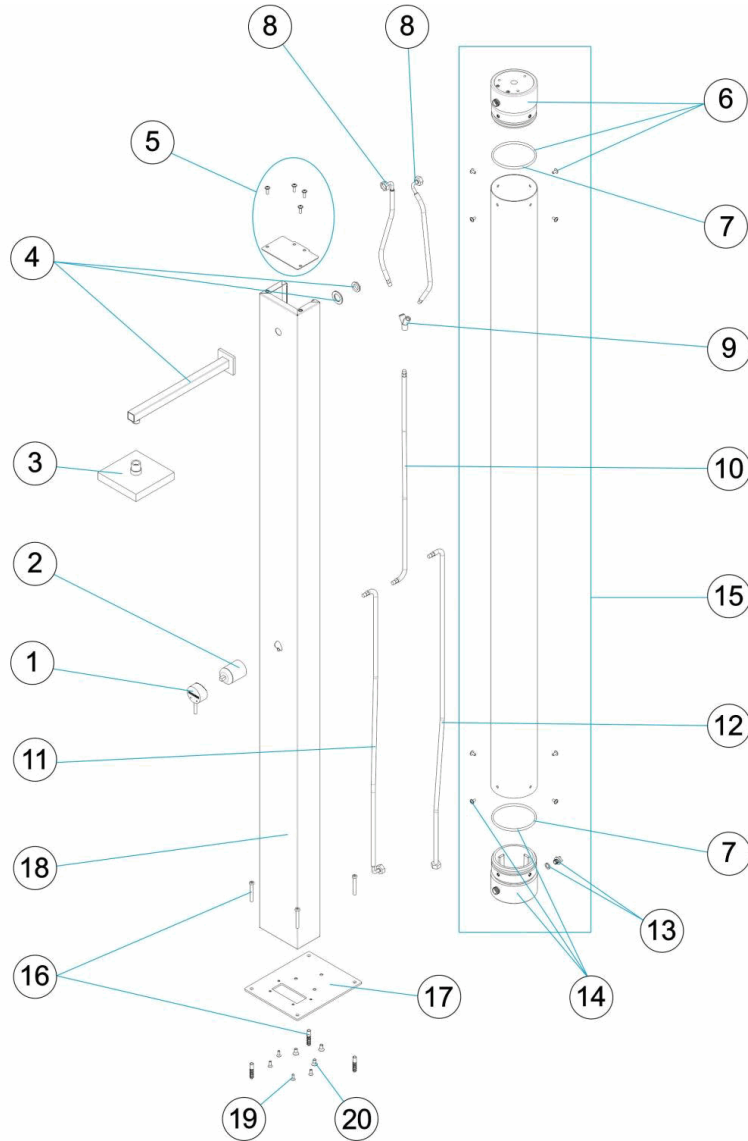


**ESPAÑOL**

POS	CODIGO	DESCRIPCION	POS	CODIGO	DESCRIPCION
1	4401040070	POMO MONOMANDO	11	4401043617	LATIGUILLO 1/2" HEMBRA CODO + M-10 MACHO L=
2	4401043605	CUERPO MONOMANDO	12	4401043618	LATIGUILLO 1/2" HEMBRA + M-10 MACHO L=1300 N
3	4401040052	ROCIADOR	13	4401043621	CJTO. TAPON PURGA
4	4401040053	BRAZO DUCHA	14	4401040073	TAPON CON PURGA
5	4401040071	TAPA SUPERIOR	15	4401040074	CJTO. DEPOSITO
6	4401040072	TAPON SIN PURGA	16	4401040056	CJTO. TACO FIJACION
7	4401043609	JUNTA TORICA D. 100X6,99	17	53873R0110	UNIT ANCHORING PLATE
8	4401043614	LATIGUILLO 1/2" HEMBRA + M-10 MACHO L=400"	18	53873R0120	CUERPO DUCHA
9	4401043615	CONEXIÓN "Y" M-10 HEMBR "	19	4401040276	TORNILLERIA FIJACION DUCHA
10	4401043616	LATIGUILLO 1/2" HEMBRA + M-10 MACHO L=800"	20	4401040277	TORNILLERIA FIJACION DEPOSITO

CODE **53873**

DESCRIPTION: **DOUCHE SOLAIRE NIAGARA**

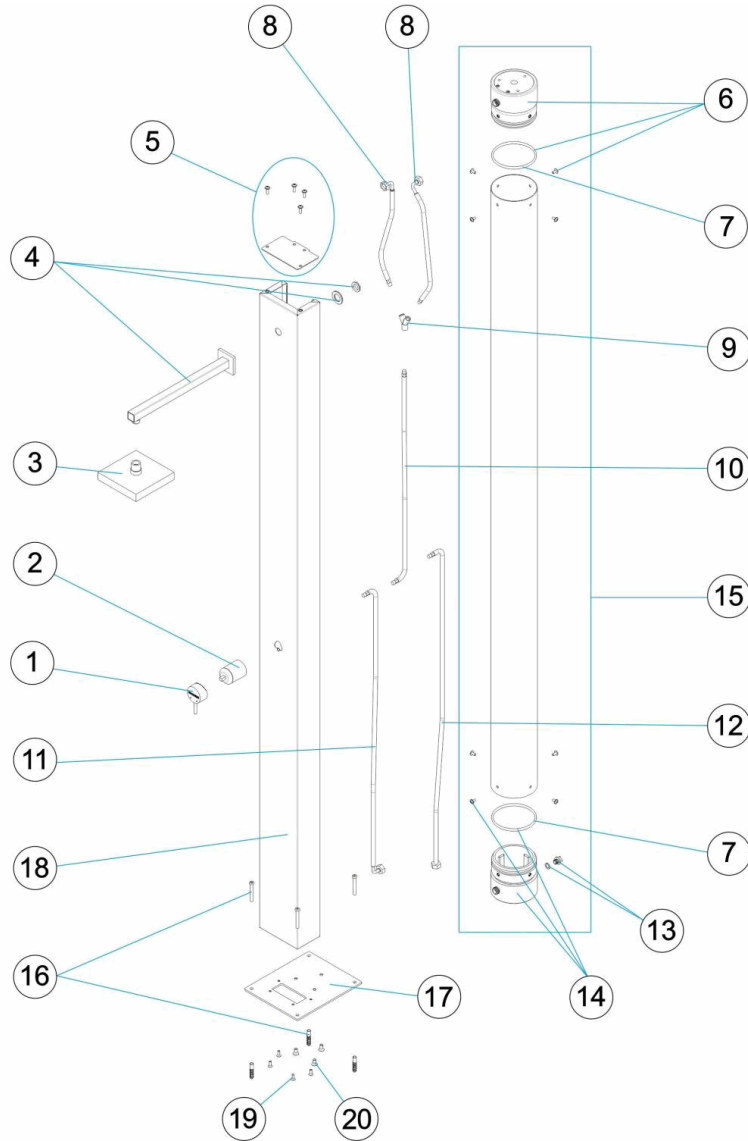


**FRANCAIS**

POS	CODE	DESCRIPTION	POS	CODE	DESCRIPTION
1	4401040070	ROBINET MITIGEUR	11	4401043617	TUYAU 1/2" FEMELLE COUDE + M-10 MÂLE L=1100"
2	4401043605	CORPS MITIGEUR	12	4401043618	TUYAU 1/2" FEMELLE + M-10 MÂLE L=1300"
3	4401040052	POMME DE DOUCHE	13	4401043621	ENSEMBLE BOUCHON PURGE
4	4401040053	BRAS DE DOUCHE	14	4401040073	BOUCHON AVEC PURGE
5	4401040071	COUVERCLE SUPÉRIEUR	15	4401040074	ENSEMBLE RÉSERVOIR
6	4401040072	BOUCHON SANS PURGE	16	4401040056	ENSEMBLE FIXATION
7	4401043609	JOINT TORIQUE D. 100X6,99	17	53873R0110	PLAQUE FIXATION CORPS
8	4401043614	TUYAU 1/2" FEMELLE + M-10 MÂLE L=400"	18	53873R0120	CORPS DE DOUCHE
9	4401043615	RACCORD "Y" M-10 FEMELLE "	19	4401040276	VISSERIE DE FIXATION DE DOUCHE
10	4401043616	TUYAU 1/2" FEMELLE + M-10 MÂLE L=800"	20	4401040277	VISSERIE DE FIXATION RÉSERVOIR

CODE **53873**

DESCRIPTION: **NIAGARA SOLAR SHOWER**

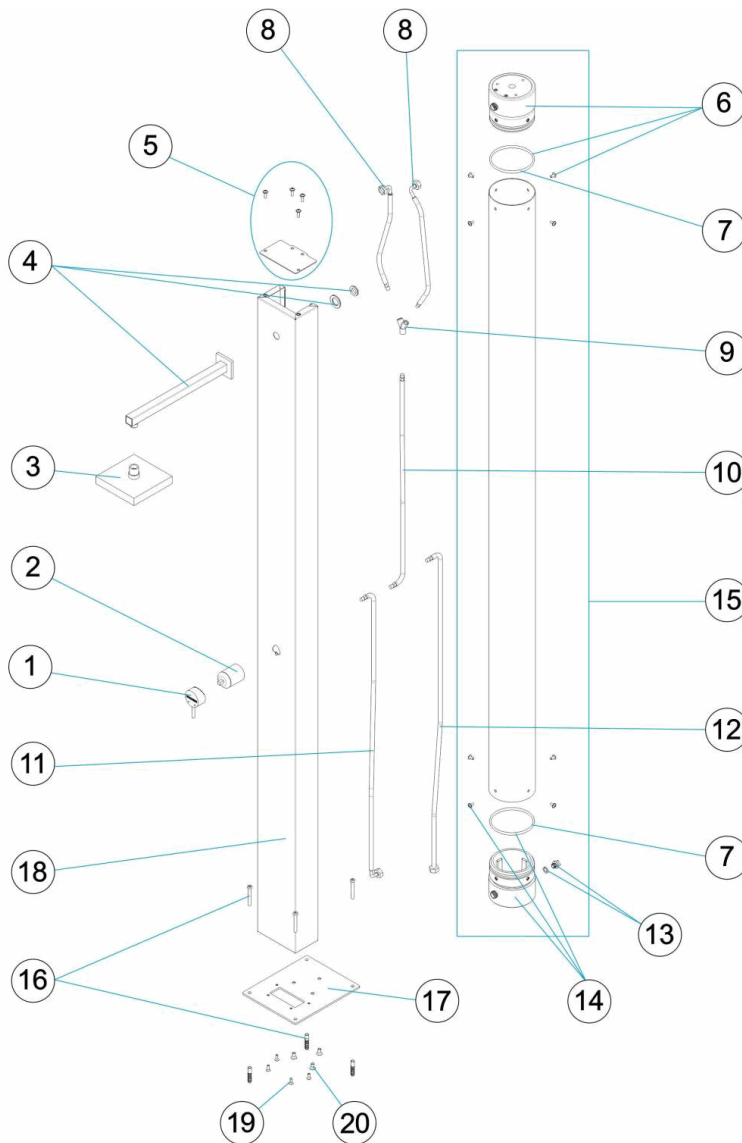


**ENGLISH**

POS	CODE	DESCRIPTION	POS	CODE	DESCRIPTION
1	4401040070	SINGLE-LEVER KNOB	11	4401043617	FLEXIBLE HOSE 1/2" FEMALE ELBOW + M-10 MALE
2	4401043605	SINGLE-LEVER HANDLE CASING	12	4401043618	FLEXIBLE HOSE 1/2" FEMALE + M-10 MALE L = 130
3	4401040052	SPRINKLER	13	4401043621	DRAIN CAP SET
4	4401040053	SHOWER ARM	14	4401040073	CAP WITH PURGE
5	4401040071	TOP COVER	15	4401040074	TANK UNIT
6	4401040072	CAP WITHOUT PURGE	16	4401040056	BRAIDED HOSE
7	4401043609	O-RING D. 100X6.99	17	53873R0110	VERANKERUNGSPLAKETTE GEHÄUSE
8	4401043614	FLEXIBLE HOSE 1/2" FEMALE + M-10 MALE L = 400"	18	53873R0120	SHOWER BODY
9	4401043615	Y" CONNECTOR M-10 FEMAL "	19	4401040276	SHOWER FIXING SCREWS
10	4401043616	FLEXIBLE HOSE 1/2" FEMALE + M-10 MALE L = 800"	20	4401040277	TANK FIXING SCREWS

CODICE **53873**

DESCRIZIONE: **DOCCIA SOLARE NIAGARA**

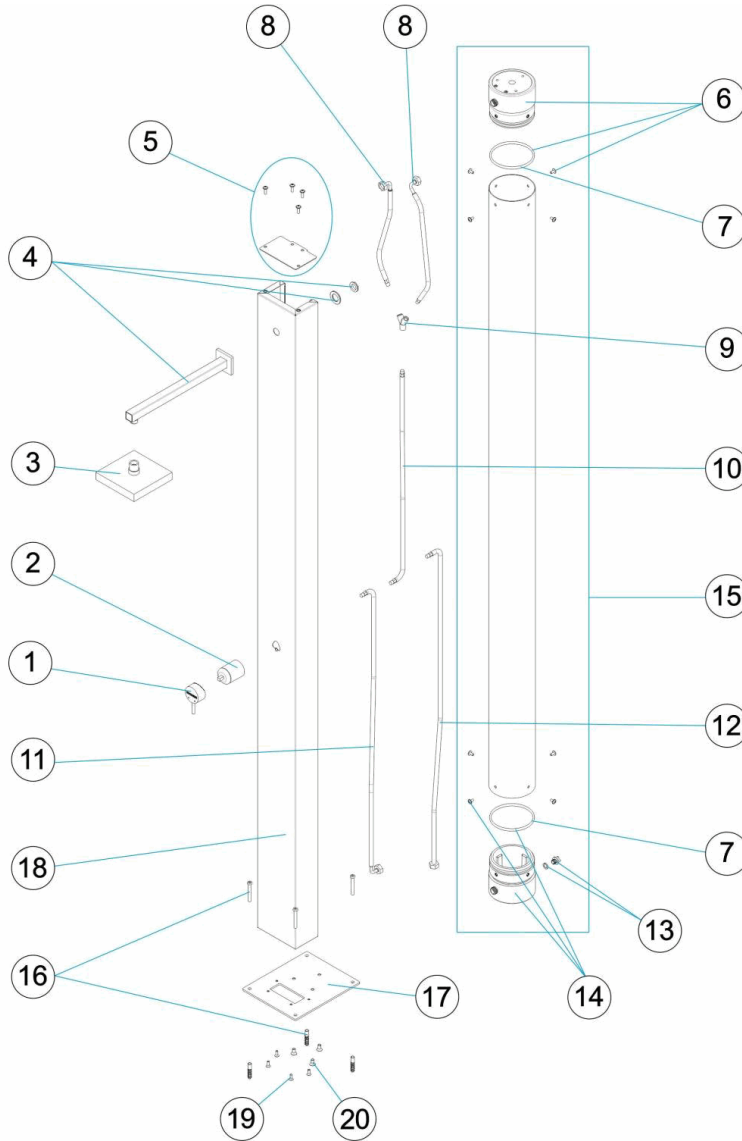


**ITALIANO**

POS	CODICE	DESCRIZIONE	POS	CODICE	DESCRIZIONE
1	4401040070	POMELLO MONOCOMANDO	11	4401043617	SPINOTTO 1/2" FEMMINA A GOMITO + M-10 MASC
2	4401043605	CORPO MONOCOMANDO	12	4401043618	SPINOTTO 1/2" FEMMINA + M-10 MASCHIO L=1300
3	4401040052	SPRUZZATORE	13	4401043621	CONGIUNTO COPERCHIO SPURGO
4	4401040053	BRACCIO DOCCIA	14	4401040073	TAPPO CON PURGA
5	4401040071	COPERCHIO SUPERIORE	15	4401040074	COMPLESSO DEPOSITO
6	4401040072	TAPPO SENZA PURGA	16	4401040056	CONGIUNTO FISSAGGIO
7	4401043609	GIUNTURA TORICA D. 100X6,99	17	53873R0110	PLACCA ANCORAGGIO CORPO
8	4401043614	SPINOTTO 1/2" FEMMINA + M-10 MASCHIO L=400"	18	53873R0120	CORPO DOCCIA
9	4401043615	CONNESSIONE "Y" M-10 FEMMIN "	19	4401040276	KIT BULLONERIA FISSAGGIO DOCCIA
10	4401043616	SPINOTTO 1/2" FEMMINA + M-10 MASCHIO L=800"	20	4401040277	KIT BULLONERIA FISSAGGIO SERBATOIO

CODE **53873**

BESCHREIBUNG: **DUSCHE SOLAR NIAGARA**

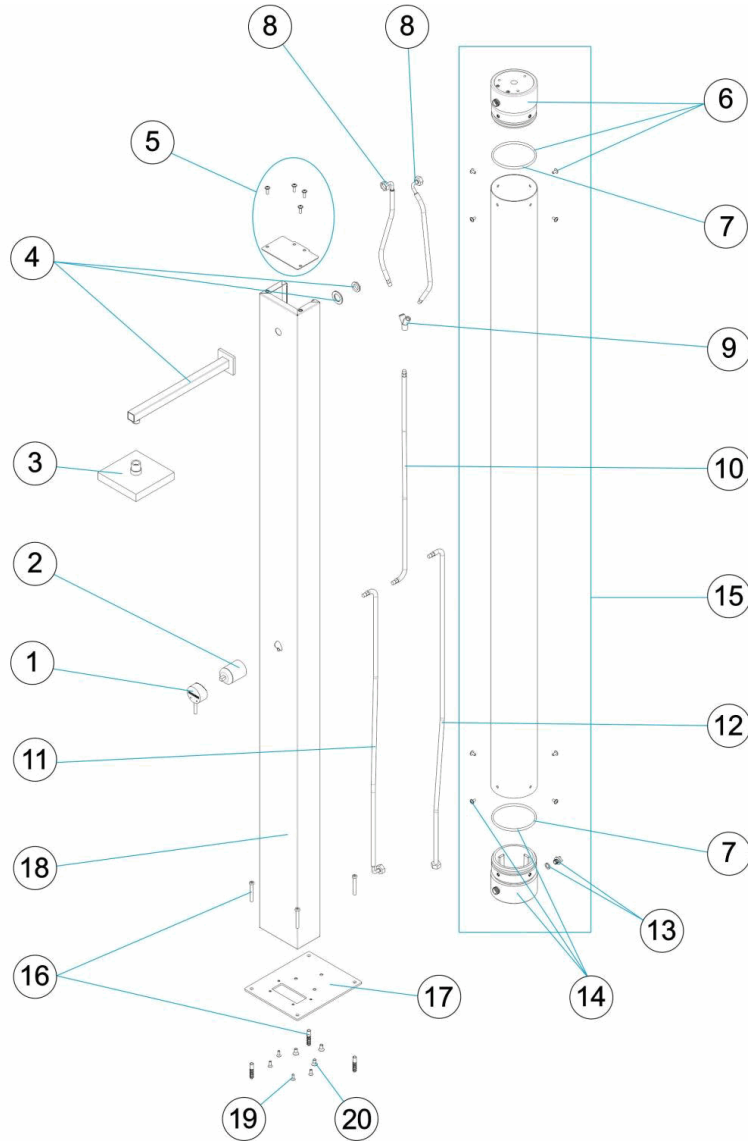


**DEUTSCH**

POS	CODE	BESCHREIBUNG	POS	CODE	BESCHREIBUNG
1	4401040070	EINHANDHEBEL	11	4401043617	SCHLAUCHLEITUNG 1/2" MUFFE WINKEL UND M-1
2	4401043605	GEHÄUSE EINHANDHEBEL	12	4401043618	SCHLAUCHLEITUNG 1/2" MUFFE UND M-10 NIPPEL
3	4401040052	DUSCHKOPF	13	4401043621	SET ABLASSSTOPFEN
4	4401040053	DUSCHARM	14	4401040073	STOPFEN MIT ABLASS
5	4401040071	ABDECKUNG OBEN	15	4401040074	BEHÄLTERSET
6	4401040072	STOPFEN OHNE ABLASS	16	4401040056	SET KLEMMKEIL
7	4401043609	O-RING D. 100 X 6,99	17	53873R0110	EINHEIT VERANKERUNGSPLATTE
8	4401043614	SCHLAUCHLEITUNG 1/2" MUFFE UND M-10 NIPPEL	18	53873R0120	DUSCHEINHEIT
9	4401043615	ANSCHLUSSMUFFE "Y" M-10"	19	4401040276	FIXIERSCHRAUBEN DUSCHE
10	4401043616	SCHLAUCHLEITUNG 1/2" MUFFE UND M-10 NIPPEL	20	4401040277	FIXIERSCHRAUBEN BEHÄLTER

CODIGO **53873**

DESCRIÇÃO: **DUCHE SOLAR NIAGARA**



**PORTUGUES**

POS	CODIGO	DESCRIÇÃO	POS	CODIGO	DESCRIÇÃO
1	4401040070	MAÇANETA MONOCOMANDO	11	4401043617	MANGA 1/2" FÊMEA COTOVELO + M-10 MACHO L :
2	4401043605	CORPO MONOCOMANDO	12	4401043618	MANGA 1/2" FÊMEA + M-10 MACHO L = 1300"
3	4401040052	DIFUSOR	13	4401043621	CJTO. TAMPÃO PURGA
4	4401040053	BRAÇO CHUVEIRO	14	4401040073	TAMPÃO COM PURGA
5	4401040071	TAMPA SUPERIOR	15	4401040074	CJTO. DEPÓSITO
6	4401040072	TAMPÃO SEM PURGA	16	4401040056	CJTO. FIXAÇÃO
7	4401043609	JUNTA TÓRICA D. 100 X 6,99	17	53873R0110	PLACA ANCORAGEM CORPO
8	4401043614	MANGA 1/2" FÊMEA + M-10 MACHO L = 400"	18	53873R0120	CORPO DE CHUVEIRO
9	4401043615	LIGAÇÃO "Y" M-10 FÊME "	19	4401040276	PARAFUSOS FIXAÇÃO CHUVEIRO
10	4401043616	MANGA 1/2" FÊMEA + M-10 MACHO L = 800"	20	4401040277	PARAFUSOS FIXAÇÃO DEPÓSITO